



Development Services

Geographic Information Systems (GIS)

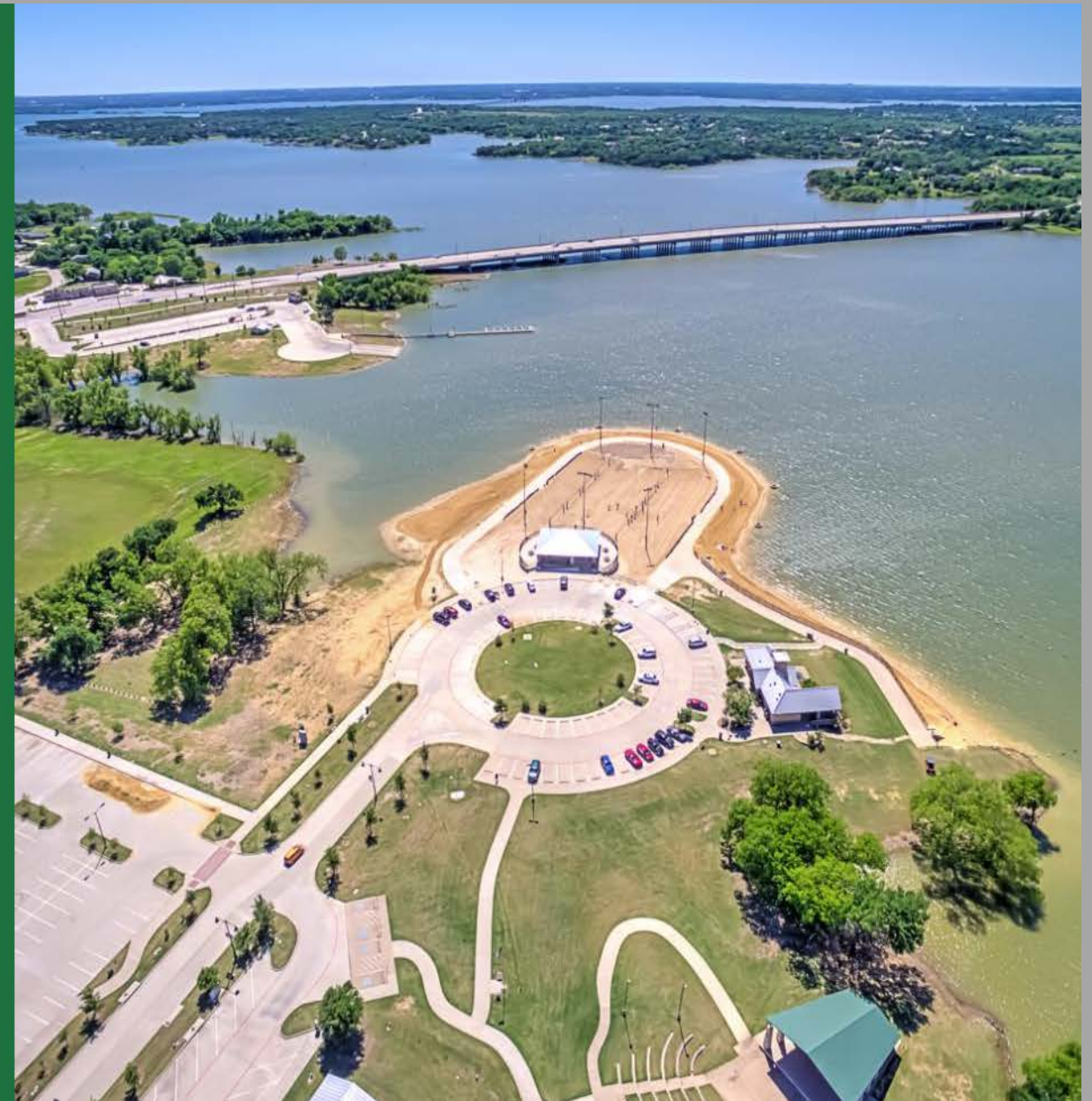


gis@littleelm.org

Town of Little Elm GIS Dashboards

Dashboards And What They Can Offer Your Organization...

November 21, 2023





Engineering Survey Dashboard

What is it?

This dashboard allows for the Town Engineering Department to view where inspectors have annotated issues during field inspections

What Feeds it?

The data that feeds this application is coming from a hosted feature layer from which results are generated through Survey 123.

Engineering Survey

ArcGIS Survey123 is a complete, form-centric solution for creating, sharing and analyzing...

<https://survey123.arcgis.com>



Engineering Survey Contractor Template

<https://littlelmgis.newedgeservices.com/portal/sharing/rest/c/>

<https://littlelmgis.newedgeservices.com>

Select Engineering Inspector

Charles Atina-Construction Inspector

Jason Solis-Engineering Coordinator

Mitch Haug-Civil Engineer

Reset

Select Inspection Input

Search...

None

Charles Atina-Construction Inspector October 17, 2023

Charles Atina-Construction Inspector October 17, 2023

Charles Atina-Construction Inspector October 17, 2023

Charles Atina-Construction Inspector October 17, 2023

Charles Atina-Construction Inspector October 17, 2023

Charles Atina-Construction Inspector October 17, 2023



See web site for license constraints.

Powered by Esri

Water Distribution Dashboard The Town of Little Elm



Water Distribution Dashboard

What is it?

This dashboard allows for Public Works Management to view where existing water infrastructure is located.

What Feeds it?

Data for this map is fed from a service that is referencing our enterprise geodatabase, which allows for instantaneous updates. Data is also collected from the field using GPS equipment.

- Water Distribution**
- Water
- Abandoned Wa Points
- Water Service Connections
- Water Hydrants
- Water System V
 - Fire Line
 - Hydrant Valv
 - Isolation
 - Other Valve I
- Water Curb Sto
- Water Control V
- Water Mains
 - Potabl
 - Non-P
 - Reuse
 - Raw
- Abandoned Wa
- Water Lateral Li



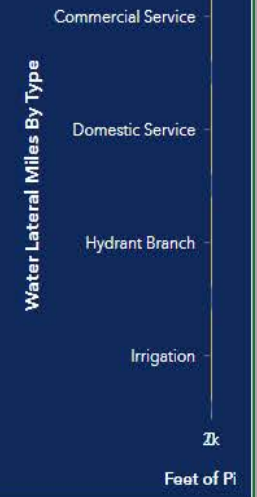
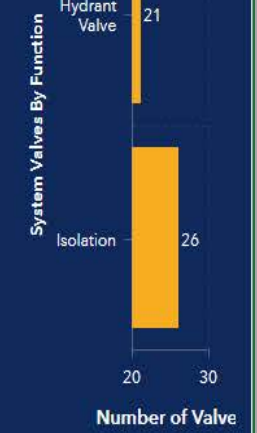
See web site for license constraints.

Powered by Esri

1.7 Miles
Water Mains

0 Miles
Casings

22
Fire Hydrants





Parks & Trails Dashboard

What is it?

This Dashboard allows for both internal staff and external residents the ability to view our parks and trails system, and all the existing amenities.

- We currently have 2 dashboards stood up across Portal and AGO.
- The public-facing AGO dashboard utilizes the newest update from ESRI, allowing for a single dashboard with a desktop and mobile view.

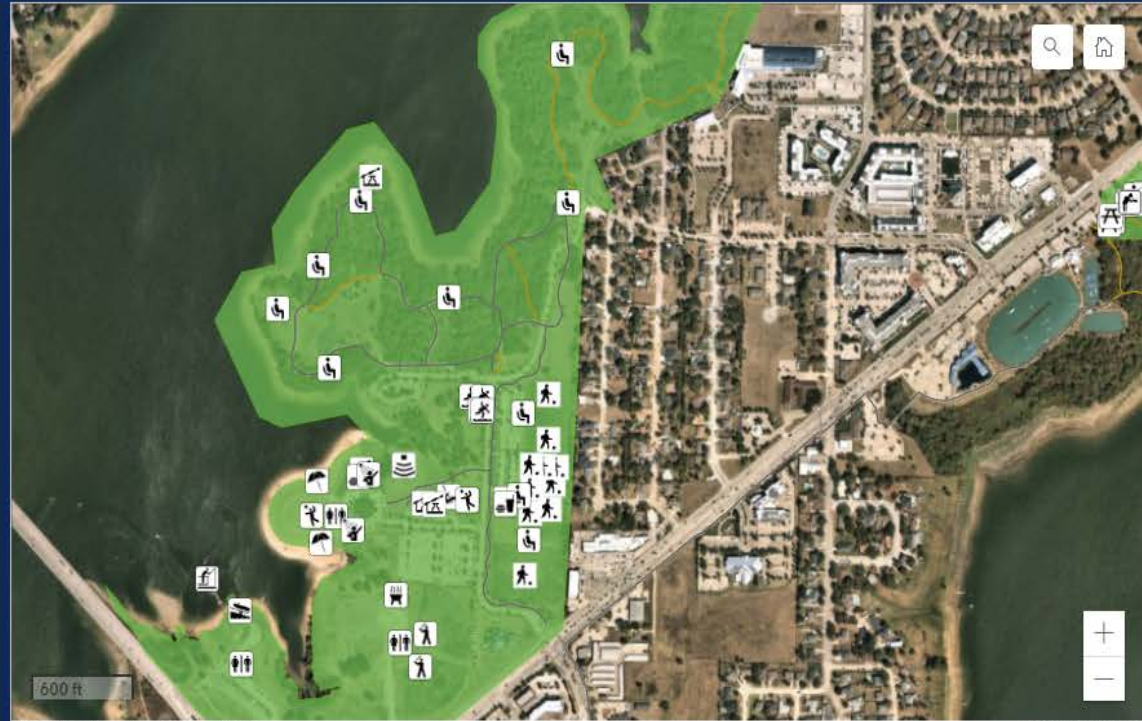
Trails & Paths

- None
- Johnny Broyle's Trail
- Little Elm Park Trail
- King's Crossing Trail
- 423 East Trail
- CottonWood Park Nature Trail
- Frisco Ranch Trail
- Valencia Trail
- LakeSide Estates Trail
- Spiritas Trail

Reset

Park Amenities

- None
- Amphitheatre Area
- Benches
- Boat Ramp
- Drinking Fountain



See web site for license constraints.

Powered by Esri

Little Elm Parks

- Little Elm Park
- Doe Branch Park
- Cottonwood Park
- Beard Park
- McCord Park
- Union Park
- Union Park Dog Park

Little Elm Parks Amenities

Park Amenity

- Amphithe Area
- Basketbal Courts
- Boat Ramp
- Baseball F
- Benches
- Camping
- Drinking Fountain
- Disc Golf Course
- Fishing D
- Football F
- Grills
- Horsesho
- Lacrosse f

Map Help Guide

Navigating to a Park

-The park navigator located at the bottom of the map will allow the user to pan over to a specific park, by simply clicking anywhere in the box where the park name is, you will be transported to the park of choice.

Selecting Amenities

-The Amenities Search is located in the upper left corner. If you would like to see what amenities are within a specific park, click directly on the amenity name and a symbol will appear on the map with the location of the amenity. The search Filter is also available for quick searching of amenities. The quickest way to show all amenities is by clicking on the select all feature, and then navigating to a specific map.



Agreements Dashboard

What is it?

This dashboard allows planning and engineering to view past and present Agreements between other cities, counties, builders, developers, individual citizens, etc.

Select An Agreement

- No Agreement Selected
- 100 W Eldorado Pkwy - Agreement
- 111 Lakeside Ln - Home Improvement Tax Incentive Program Agreement
- 113 W Park Dr - Development Agreement
- 117 W Park Home Improvement - Home Improvement Tax Incentive Program Agreement
- 121 W. Park Drive - Development Agreement
- 1301 Xeraco Dr - Home Improvement Tax Incentive Program Agreement
- 15222 King Road - Development Agreement
- 1901 FM423, 423 Alliance LLC - Development Agreement
- 204 Judy Ln -
- 205 East Park Drive - Development Agreement



See web site for license constraints.

Powered by Esri

Please select an agreement on the lower left window under the Agreement Selection tool.

Please select an agreement from the lower left to see the expiration widget contents.

All Agreements

- Agreement Type
- Agreement
 - Development Agreement
 - Exchange Agreement
 - Home Improvement
 - Tax Incentive Program





Commercial Properties Dashboard

What is it?

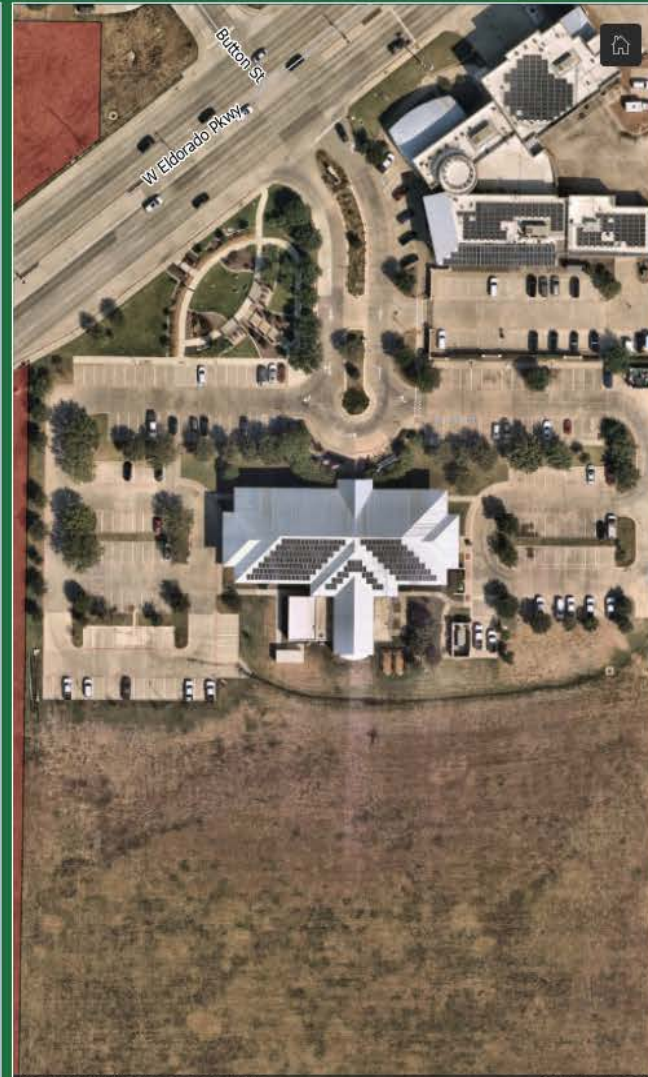
This dashboard allows for Planning and Development staff to view current businesses occupying certain suits as well as the location of vacant suites across the town.

Filter By Business Type

Select a category

- None
- Automotive
- Bank
- Commercial or Retail Facility
- Day Care Facility
- Dentist
- Education Facility
- Gas Station
- Grocery Store
- Gym
- Health or Medical Facility
- Hotel / Motel
- Outpatient Clinic
- Personal Grooming
- Private School
- Restaurant / Eating Establishment

Please select a business type category on the left.



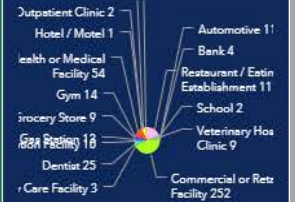
See web site for license constraints.

Powered by Esri

Commercial Spaces

- Bank
- Commercial or Retail Facility
- Day Care Facility
- Dentist
- Education Facility
- Gas Station
- Grocery Store
- Gym
- Health or Medical Facility
- Hotel / Motel
- Outpatient Clinic
- Personal Grooming
- Private School
- Restaurant / Eating Establishment
- School
- Vacant
- Automotive
- Veterinary Hospital / Clinic

Active Business Count By Specific Type



Active Business Percentage By Specific Type



175 Vacant Spaces
Out of 733 in the town.
or 24% commercial space is vacant



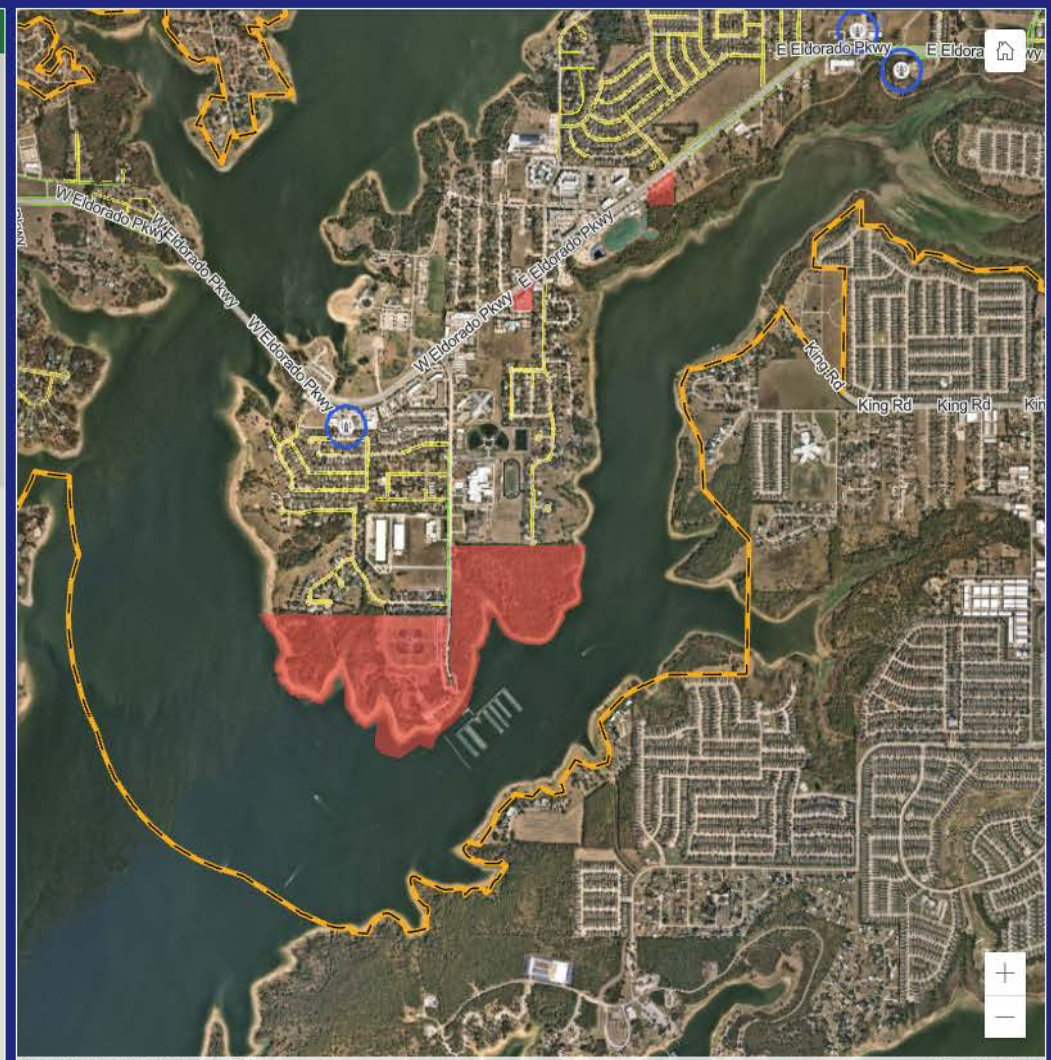
Little Elm Telecommunication Dashboard



Telecom Sites

Select a category

- Clear Selection
- 2545 Oak Grove Pkwy
- 1824 Barton Springs Dr
- 3096 Big Leaf Dr.
- 26531 E University Dr
- 1005 E Eldorado Pkwy
- 1152 E Eldorado Pkwy
- 1489-C E. Eldorado Pkwy
- 2774 E Eldorado Pkwy
- 2700 E Eldorado Pkwy
- 2700 E Eldorado Pkwy
- 2769 Eldorado Pkwy
- 2500 Eppright Dr
- 11535 FM 423
- 103 FM 423



See web site for license constraints.

Powered by Esri

Possible Telecommunication Areas

- Type
- Available
 - Limited Availability

Telecommunication 300 Foot buffer



Telecommunication Sites



Town Limits

Town Limits



Eldorado Corridor (Not Available for Telecom Devices)



Telecommunications Dashboard

What is it?

This dashboard allows for Engineering and Planning staff to view the location of existing Telecommunication devices within the town.



LE Park Cameras

Working
14
Cameras

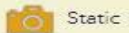
Little Elm Park Cameras

Camera locations are approximate and are symbolized by a camera icon.

Each icon has two lines radiating away from it to indicate the camera's field of vision.

LE Park Cameras

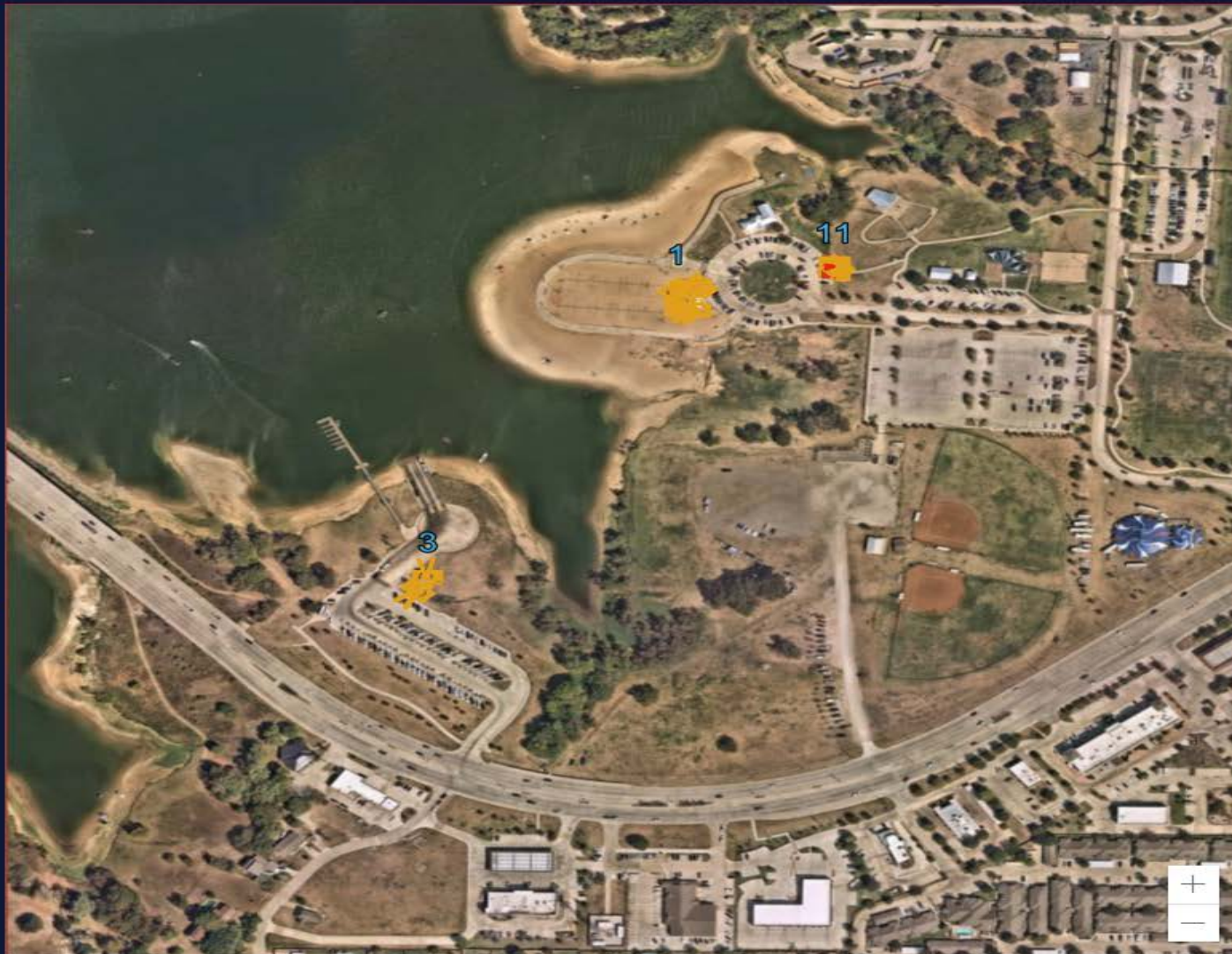
Camera Type



Static



PTZ



Key	Camera Name	Dir...
1	LEPark Beach Volleyball 1	NW
2	LEPark Beach Volleyball 2	SW
3	LEPark Boat Launch	N
4	LEPark Boat Launch Parking	SW
11	LEPark Circle Left	S
12	LEPark Circle PTZ	W
13	LEPark Circle Right	N
14	LEPark Concert Hall	NE
17	LEPark Parking Lot	NE
18	LEPark Parking Lot 2	NE
19	LEPark Pavilion Rear	DO...
20	LEPark Pavilion Rear Left	DO...
21	LEPark Pavilion Rear Right	DO...
22	LEPark Picnic Awning	E

Esri, NASA, NGA, USGS, FEMA | Esri Community Maps Contributors, Town of Little Elm, Texas Parks & Wildlife, © OpenSt... Powered by Esri

Outdoor Warning Siren Dashboard

What is it?

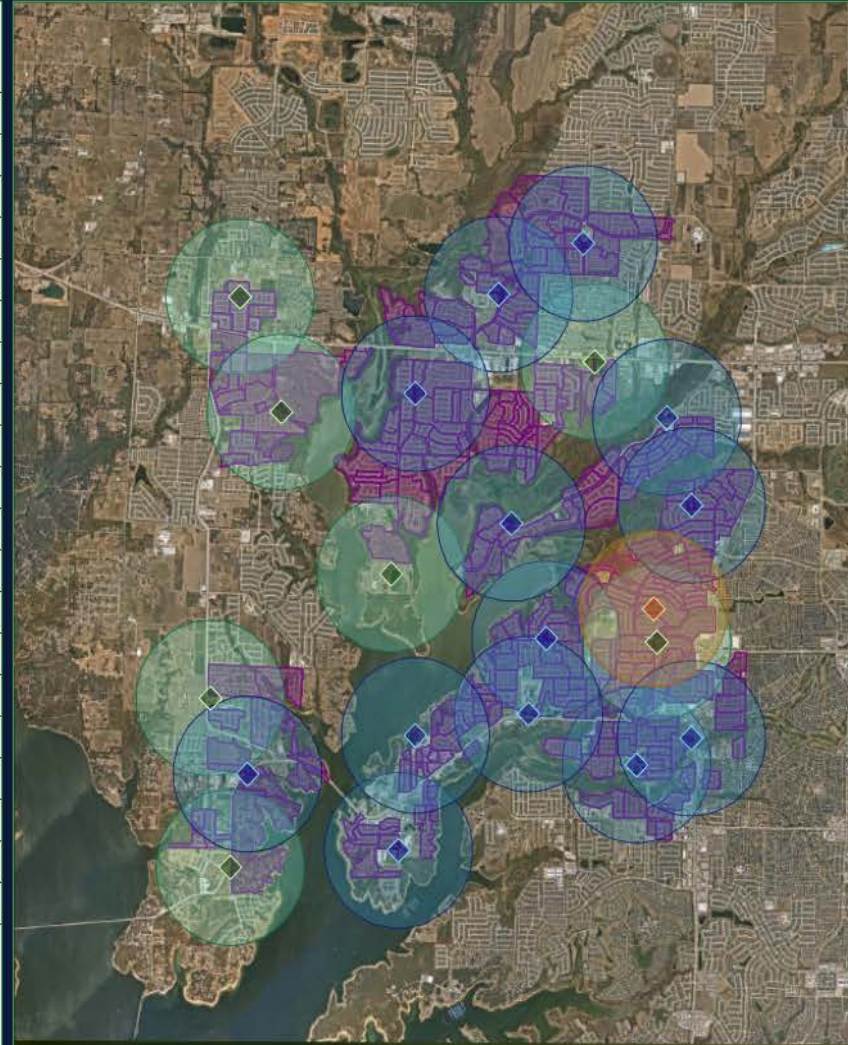
This dashboard allows Emergency Management to view existing warning sirens and determine whether more will be needed.

Outdoor Warning Siren Sites

Select Status: Current Future Prospective Clear 🔗

Siren Names

- ◆ Walker Lane Elevated Tower Siren
- ◆ Brent Intermediate Siren
- ◆ Harts Branch Siren
- ◆ LEISD Stadium Siren
- ◆ RTI Siren
- ◆ Northlake Communities Siren
- ◆ Fire Station #3
- ◆ North Lincoln Park Siren
- ◆ Polo Fields Siren
- ◆ Hilltown Siren
- ◆ Sunrise Bay Siren
- ◆ South Lincoln Park Siren
- ◆ Little Elm Pkwy
- ◆ Frisco Hills
- ◆ Frisco Ranch
- ◆ Garza Well Site
- ◆ Valencia
- ◆ The Cove
- ◆ Lakeside Estates
- ◆ Union Park Siren
- ◆ Dawn Mist Park



See web site for license constraints.

Powered by Esri

OWS Layers

Outdoor Warning Siren Sites

Status

- ◆ Current
- ◆ Future
- ◆ Prospective

Outdoor Warning Sirens (Buffered)

Status

- Current
- Future
- Prospective

SubdivisionUp

Siren Status	Count
Current	13
Future	7
Prospective	1

	<p>BUG-000150777</p> <p>-The Flash, Pan, and Zoom options are not available in the (grouped values) Category selector actions when a feature service from ArcGIS Enterprise is used as the data source.</p>	<p>ENH-000134450</p> <p>-Provide the ability in ArcGIS Dashboards to reset dashboards, including selectors and map.</p>	

ESRI, Nearmap, NewEdge.

