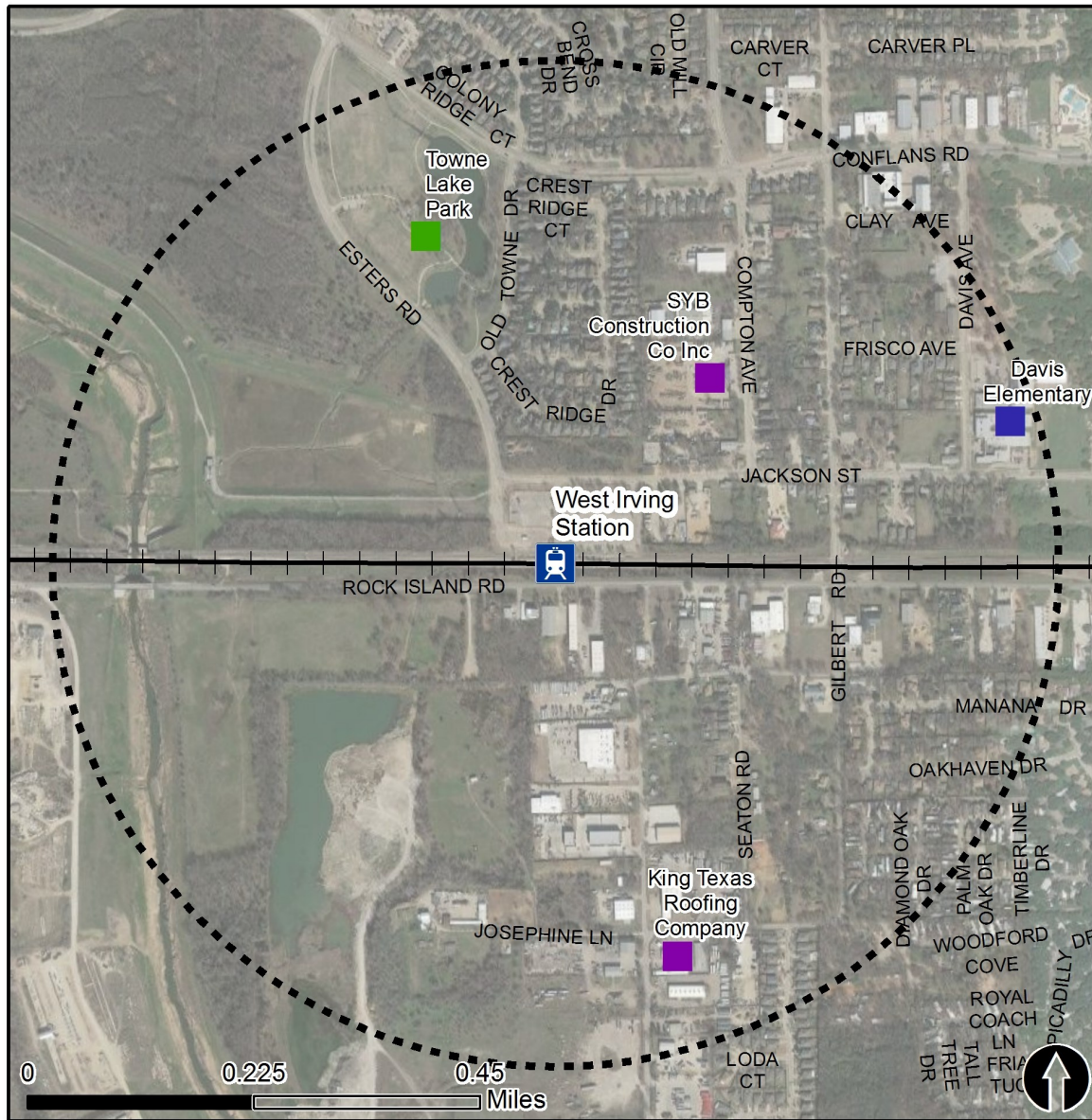


# Rail Station Fact Sheet – West Irving Station



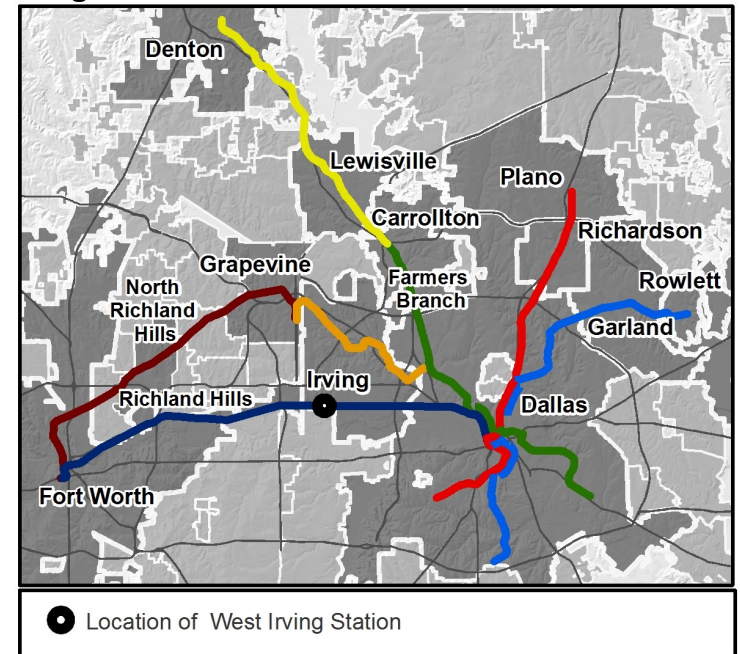
North Central Texas  
Council of Governments



## Station Overview

West Irving Station is located on the southeast corner of Esters Road and Jackson Street in Irving. The station opened in 2000 and is served by the Trinity Railway Express (TRE) commuter rail.

## Regional Rail Transit Lines



0.5 Mile  
Station Buffer



Rail Stations



Rail Lines

## Key Developments



Education



Industrial



Recreation

# Rail Station Fact Sheet – West Irving Station



## Station Characteristics<sup>1</sup>

Address	4200 Jackson Street
City	Irving
Agency	Trinity Railway Express
Rail Line(s)	TRE
Corridor	Trinity Railway Express
Year Opened	2000
Park & Ride Spaces	537

## Ridership<sup>1</sup>

2015 Avg. Weekday	300
2015 Avg. Saturday	100
2015 Avg. Sunday	N/A

## 2014 On-Board Transit Survey: Access Mode to Station<sup>2</sup>

Bike	3.7%
Drive Alone	15.8%
Carpool	2.0%
Walk	33.3%
Drop Off	27.1%
Other	0.0%
Transit Transfer	18.1%

## Station Area Plans and Studies

Title	
Publisher	
Year	
Web Location	

## Station Area Characteristics (1/2 mile radius)

### Demographics<sup>3</sup>

Total Population	10,817
Population Density (pop/sq. mile)	2,315
Average Median Age	33
Average Median Income	\$49,670.57

### Housing<sup>3</sup>

Total Housing Units	4,146
Housing Density (units/sq. mile)	887
Percent Occupied	93%
Percent Owner-Occupied	56%
Percent Renter-Occupied	44%

### Commute To Work<sup>3</sup>

Percent Automobile	94.4%
Percent Drive Alone	86.0%
Percent Carpool	8.4%
Percent Transit	1.1%
Percent Bike	0.7%
Percent Walk	0.5%
Percent Other	0.8%
Percent Work from Home	2.5%
Percent Zero-Vehicle Households	4.8%

### Traffic Survey Zone 2017 Employment Forecast<sup>2</sup>

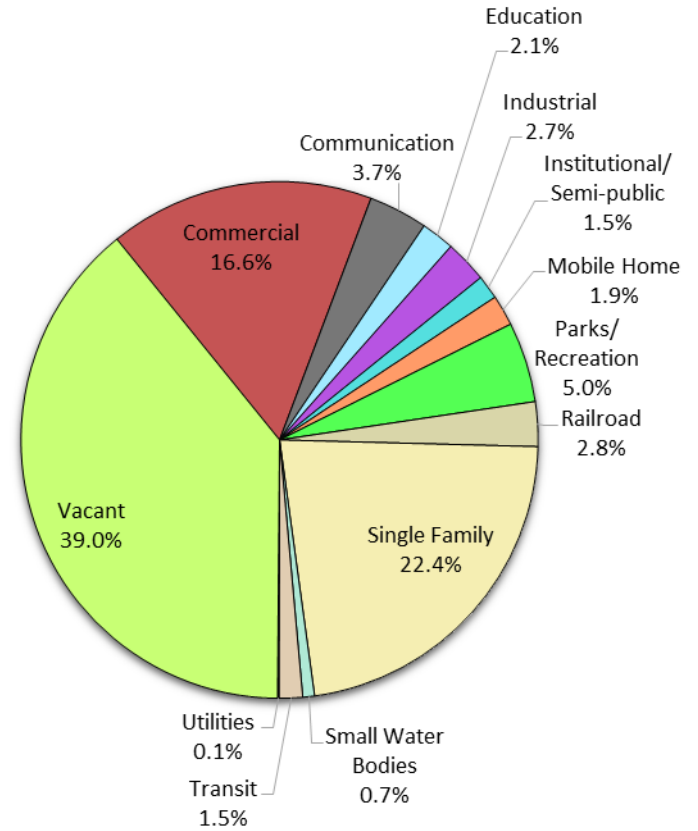
Total Jobs	4,640
Job Density (jobs/sq. mile)	1,135



# Land Use (2016) – West Irving Station



### Land Use Percentages

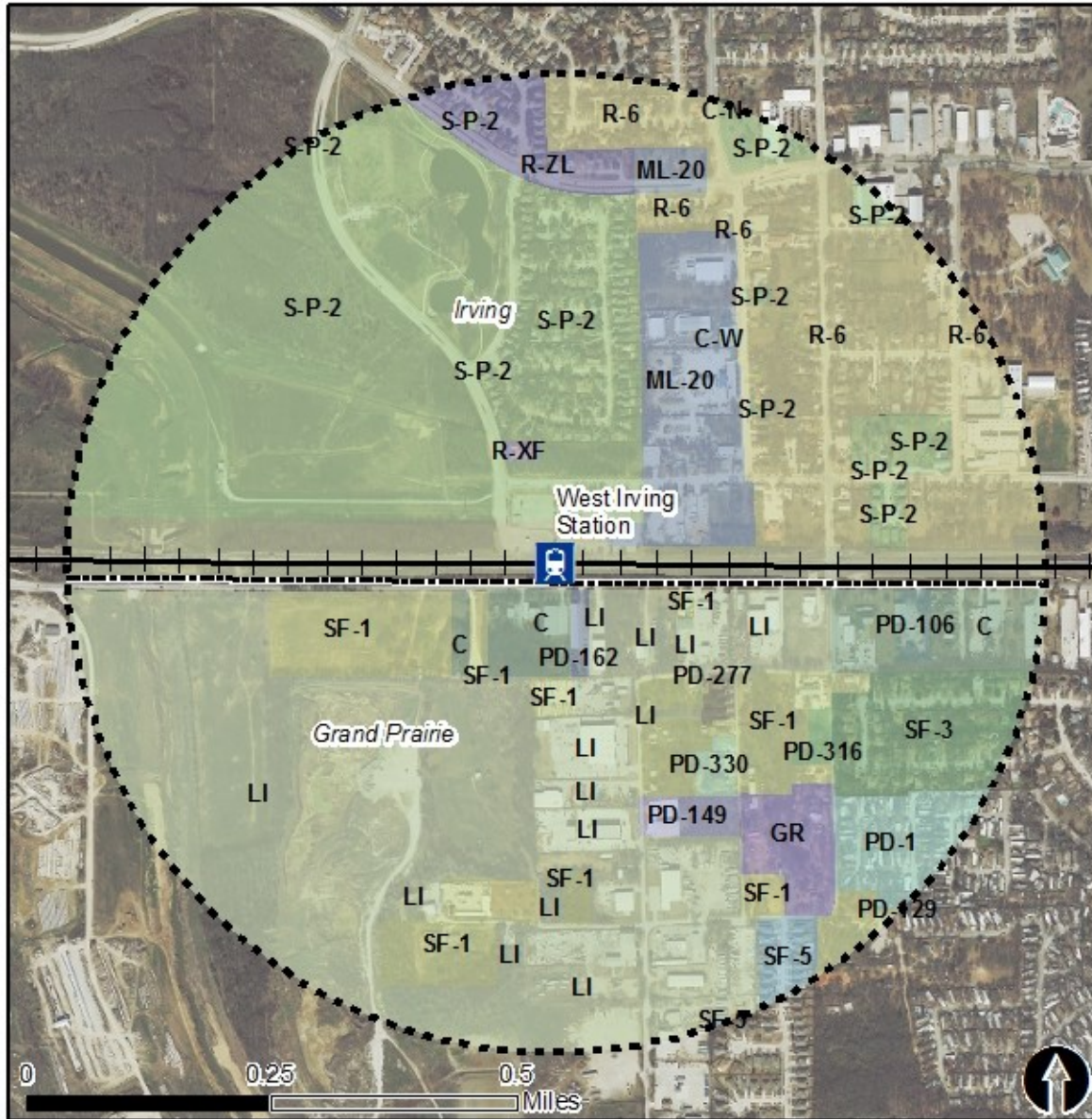


0.5 Mile  
Station Buffer

Rail Stations Rail Lines



# Zoning (2016) – West Irving Station



## Zoning Districts

- C-N – Neighborhood Commercial
  - C-W – Commercial Warehouse
  - ML-20 – Light Industrial
  - R-6 – Single Family
  - R-XF – Extra Family
  - S-P-2 – Site Plan (Generalized)
- Grand Prairie (2011)
- C – Commercial
  - GR – General Retail
  - LI – Light Industrial
  - PD-# – Planned Development
  - SF-# – Single Family

For more information on zoning, please visit the City of Irving Zoning website at:

<http://cityofirving.org/733/Codes-and-Ordinances>

City of Grand Prairie zoning website:

<http://www.gptx.org/index.aspx?page=1030>



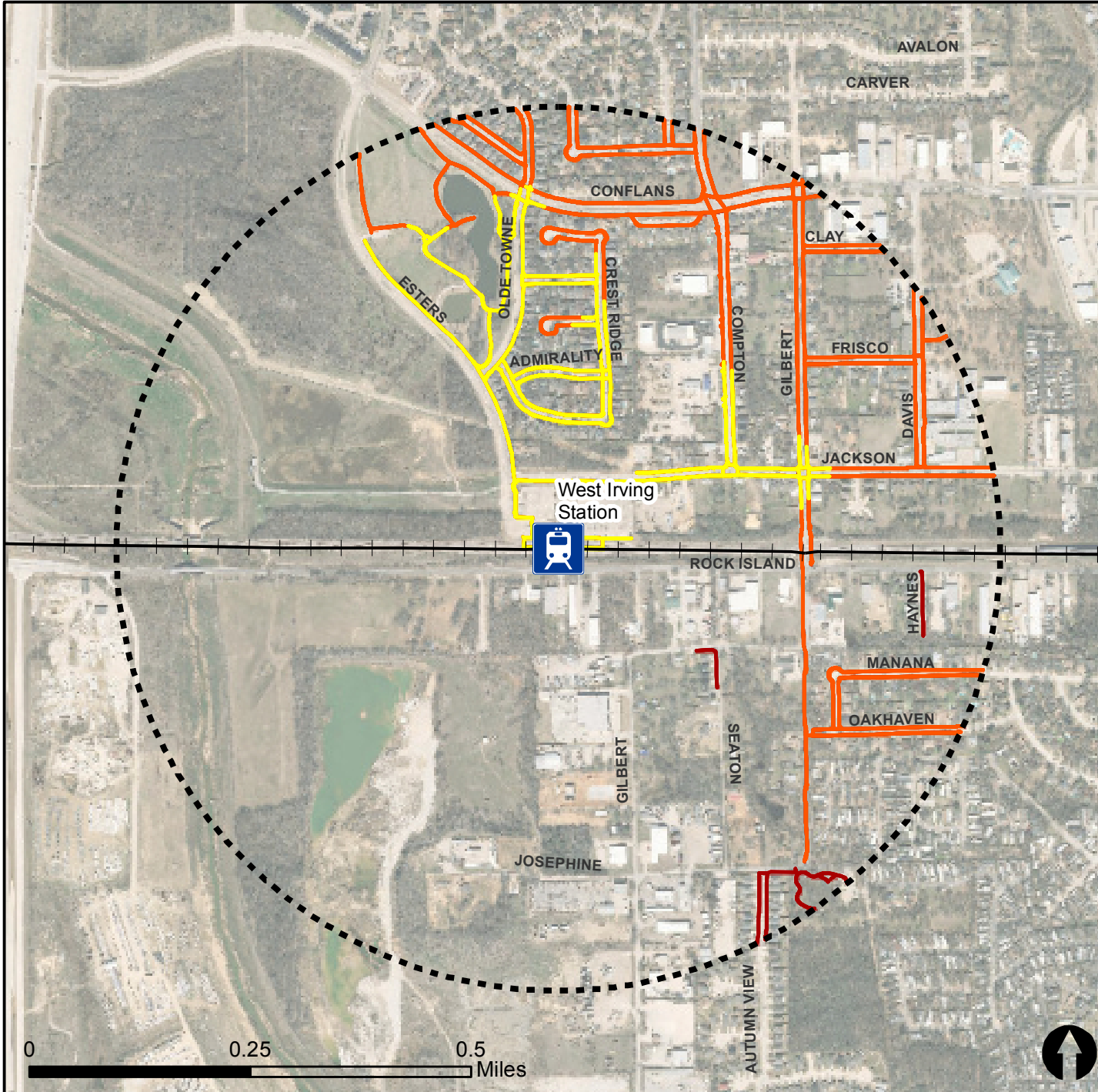
Rail Stations + + Rail Lines

# Pedestrian Routes to Rail - West Irving Station



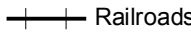



Last Updated: February 2015



North Central Texas  
Council of Governments

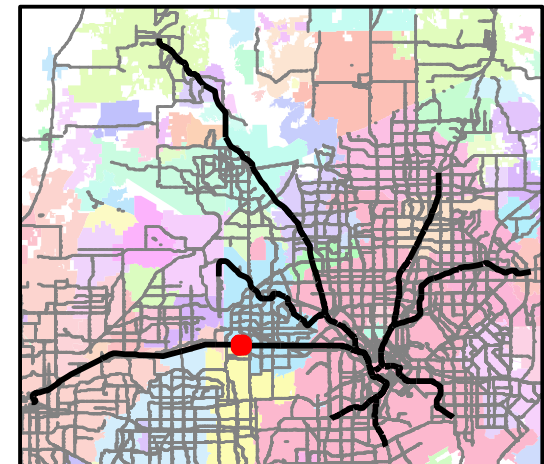


### Legend

-  Rail Stations
-  0.5 Mile Station Buffer
-  Railroads
-  Existing sidewalk facilities within a 0.5 mile walk distance
-  Existing sidewalk facilities greater than a 0.5 mile walk distance
-  Existing sidewalk facilities that are disconnected due to a gap in the network

### Project Overview

The Pedestrian Routes to Rail study identifies all existing pedestrian facilities within a half-mile radius of existing light rail and commuter rail stations in the Dallas-Fort Worth region based on 2014 data. ArcGIS Network Analyst tool was used to identify continuous facilities that are less than or greater than a half-mile actual walking distance to a station. The maps also reflect existing facilities that are disconnected due to gaps or other barriers not allowing a continuous pedestrian route to a station. The maps do not reflect the condition or ADA compliance of the existing infrastructure. More information on the Routes to Rail study and methodology is available at: [nctcog.org/RoutesToRail](http://nctcog.org/RoutesToRail)



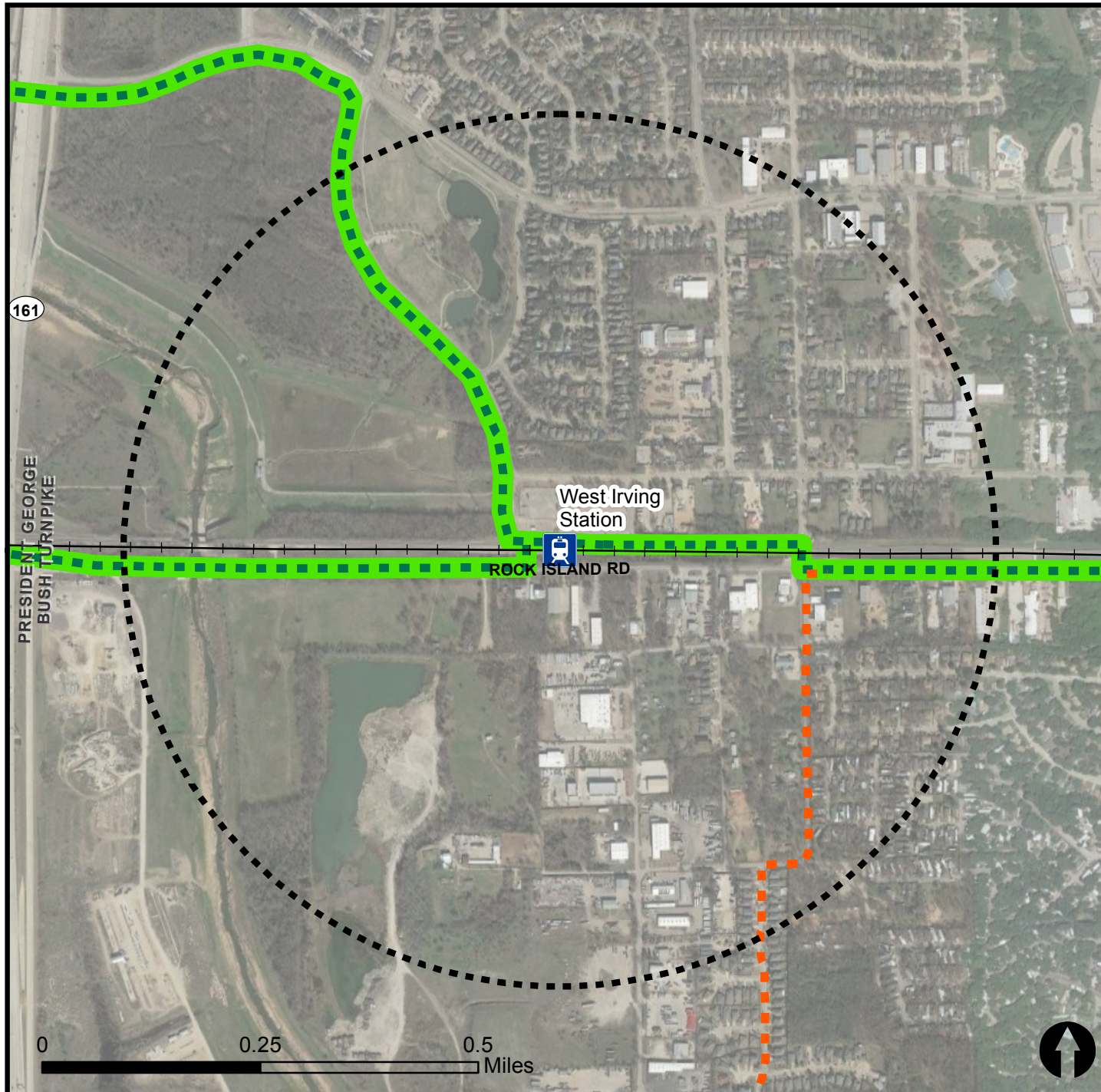


# Bicycle Routes to Rail - West Irving Station

Last Updated: October 2016



North Central Texas  
Council of Governments



## Legend

- Rail Stations
- 0.5 Mile Station Buffer
- Rail Lines
- On-Street Bikeway, Existing
- On-Street Bikeway, Planned
- 2040 Veloweb
- Off-Street Path, Existing
- Off-Street Path, Planned

## Project Overview

The Bicycle Routes to Rail study identifies all existing and planned bikeways in proximity to existing or under-construction light rail and commuter rail stations in the Dallas / Fort Worth region based on 2016 data. The maps reflect off-street paths (trails) and streets designated by local adopted master plans for dedicated bikeways (e.g. bike lanes, cycle tracks) located on the street. In accordance with the Texas Transportation Code, bicyclists have a right to the road. As such, the map does not reflect other roadways around the station that may have signed bike routes or by state law may be used by bicyclists. More information about the Routes to Rail study and methodology is available at:

[nctcog.org/RoutesToRail](http://nctcog.org/RoutesToRail)

