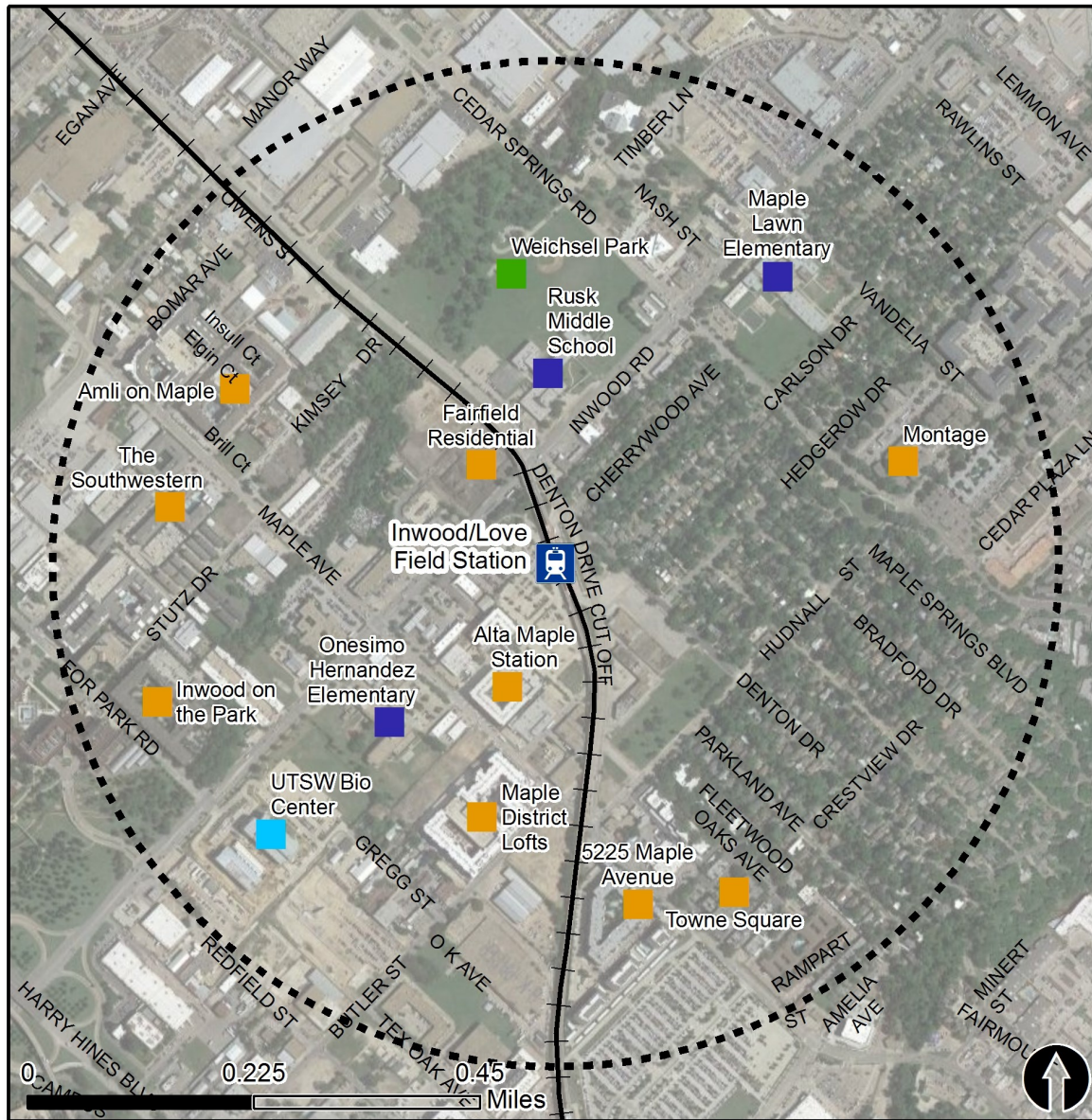


# Rail Station Fact Sheet – Inwood/Love Field Station



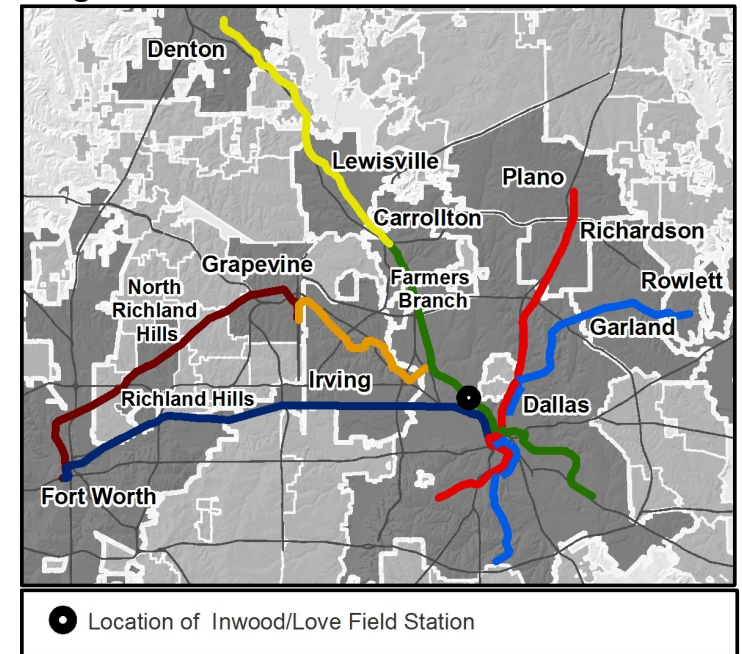
North Central Texas  
Council of Governments



## Station Overview

Inwood/Love Field Station is near the Inwood Road and Denton Drive intersection. The station connects to Dallas Love Field Airport via shuttle bus service. The station opened in 2010 and is served by the DART Rail Green and Orange Lines.

## Regional Rail Transit Lines



0.5 Mile  
Station Buffer



Rail Stations



Rail Lines

## Key Developments



Education



Institutional



Multi-Family



Recreation

# Rail Station Fact Sheet – Inwood/Love Field Station



## Station Characteristics<sup>1</sup>

Address	2720 Inwood Road
City	Dallas
Agency	Dallas Area Rapid Transit
Rail Line(s)	Green Line, Orange Line
Corridor	Northwest (NW)
Year Opened	2010
Park & Ride Spaces	385

## Ridership<sup>1</sup>

2015 Avg. Weekday	1,599
2015 Avg. Saturday	792
2015 Avg. Sunday	521

## 2014 On-Board Transit Survey: Access Mode to Station<sup>2</sup>

Bike	3.2%
Drive Alone	6.5%
Carpool	0.3%
Walk	41.8%
Drop Off	16.4%
Other	0.0%
Transit Transfer	31.8%

## Station Area Plans and Studies

Title	
Publisher	
Year	
Web Location	

## Station Area Characteristics (1/2 mile radius)

### Demographics<sup>3</sup>

Total Population	13,067
Population Density (pop/sq. mile)	5,649
Average Median Age	33
Average Median Income	\$46,734.89

### Housing<sup>3</sup>

Total Housing Units	6,489
Housing Density (units/sq. mile)	2,805
Percent Occupied	89%
Percent Owner-Occupied	19%
Percent Renter-Occupied	81%

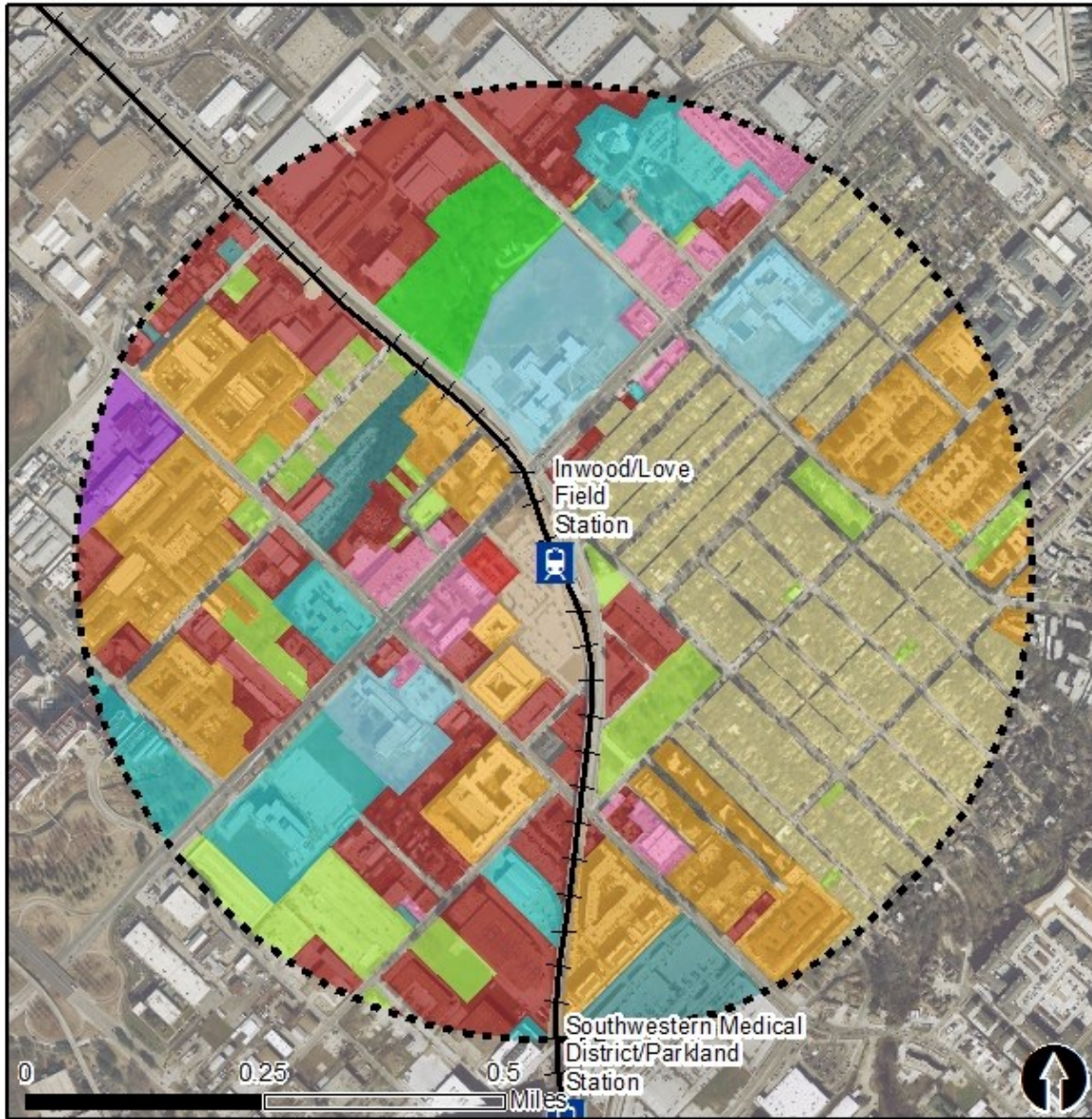
### Commute To Work<sup>3</sup>

Percent Automobile	81.8%
Percent Drive Alone	66.9%
Percent Carpool	14.9%
Percent Transit	5.6%
Percent Bike	0.3%
Percent Walk	9.4%
Percent Other	0.7%
Percent Work from Home	2.3%
Percent Zero-Vehicle Households	7.2%

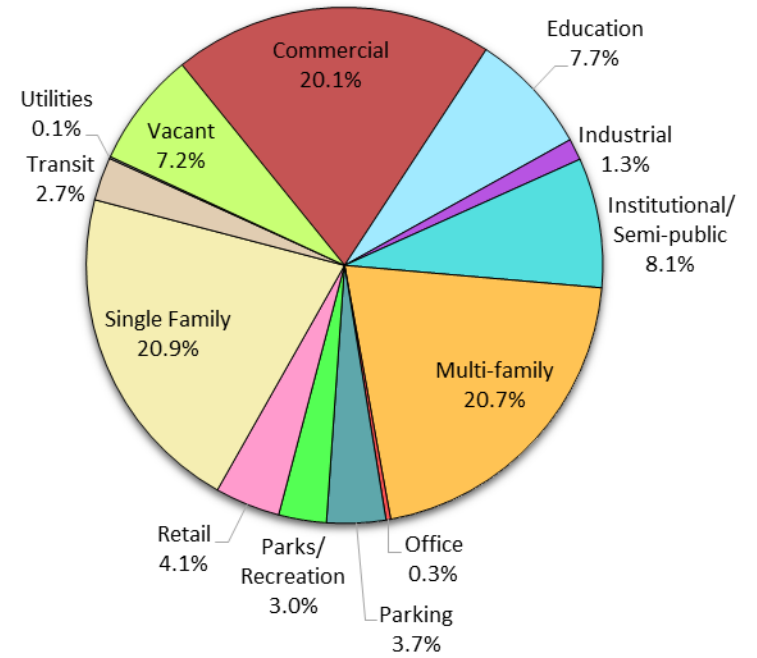
### Traffic Survey Zone 2017 Employment Forecast<sup>2</sup>

Total Jobs	21,467
Job Density (jobs/sq. mile)	11,931

# Land Use (2016) – Inwood/Love Field Station

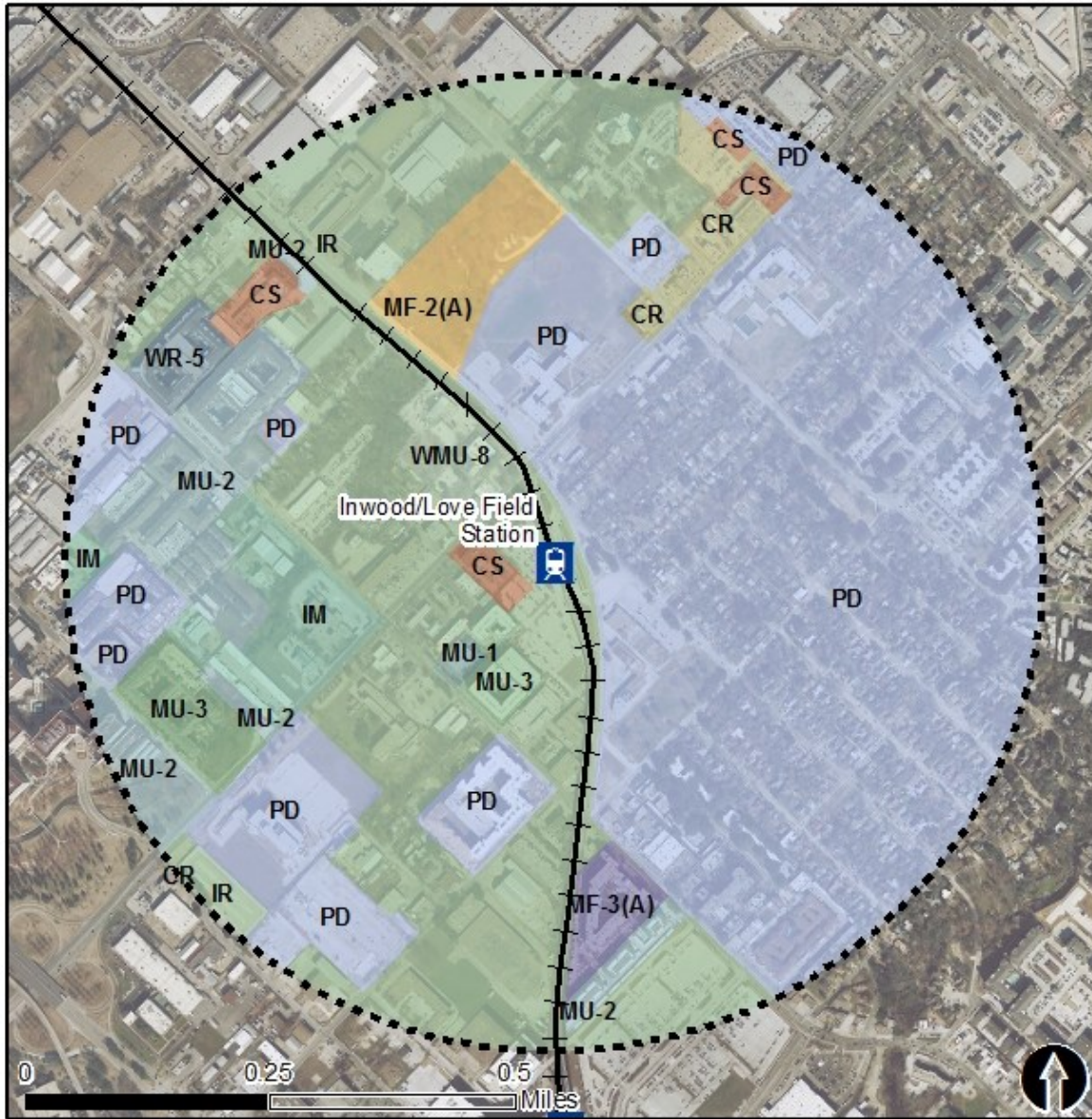


Land Use Percentages



Rail Stations + + Rail Lines

# Zoning (2016) – Inwood/Love Field Station



## Zoning Districts

- CS – Commercial Service
- CR – Community Retail
- IM – Industrial Manufacturing
- IR – Industrial Research
- MU-1, MU-2, MU-3 – Mixed Use
- MF-2 (A), MF-3(A) – Multifamily
- PD – Planned Development
- WMU-8 – Walkable Mixed-Use
- WR-5 – Walkable Residential

For more information on zoning, please visit the City of Dallas Zoning website at:

<http://gis.dallascityhall.com/zoningweb/>



0.5 Mile  
Station Buffer



Rail Stations



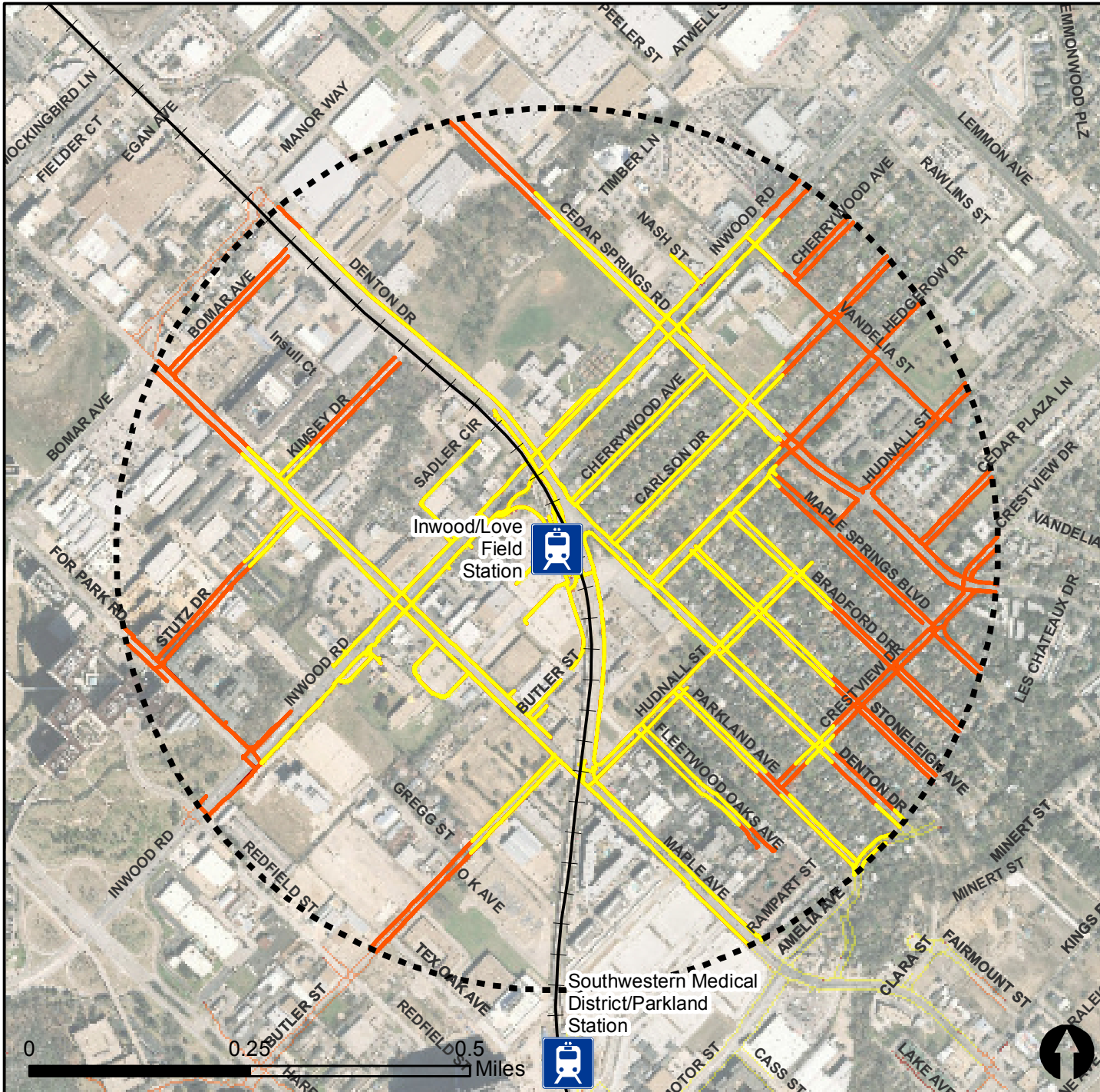
Rail Lines

# Pedestrian Routes to Rail - Inwood/Love Field Station

Last Updated: February 2015



North Central Texas  
Council of Governments

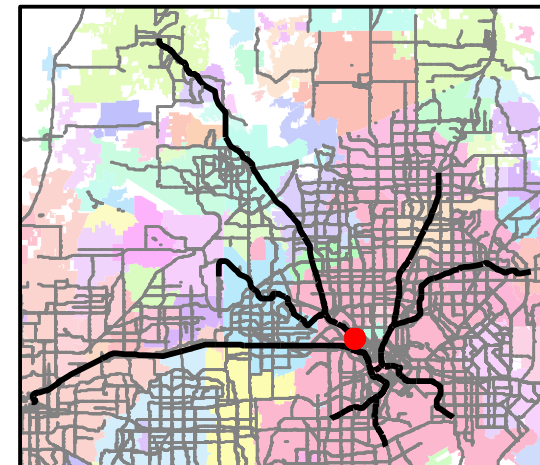


### Legend

- Rail Stations
- 0.5 Mile Station Buffer
- Railroads
- Existing sidewalk facilities within a 0.5 mile walk distance
- Existing sidewalk facilities greater than a 0.5 mile walk distance
- Existing sidewalk facilities that are disconnected due to a gap in the network

### Project Overview

The Pedestrian Routes to Rail study identifies all existing pedestrian facilities within a half-mile radius of existing light rail and commuter rail stations in the Dallas-Fort Worth region based on 2014 data. ArcGIS Network Analyst tool was used to identify continuous facilities that are less than or greater than a half-mile actual walking distance to a station. The maps also reflect existing facilities that are disconnected due to gaps or other barriers not allowing a continuous pedestrian route to a station. The maps do not reflect the condition or ADA compliance of the existing infrastructure. More information on the Routes to Rail study and methodology is available at: [nctcog.org/RoutesToRail](http://nctcog.org/RoutesToRail)

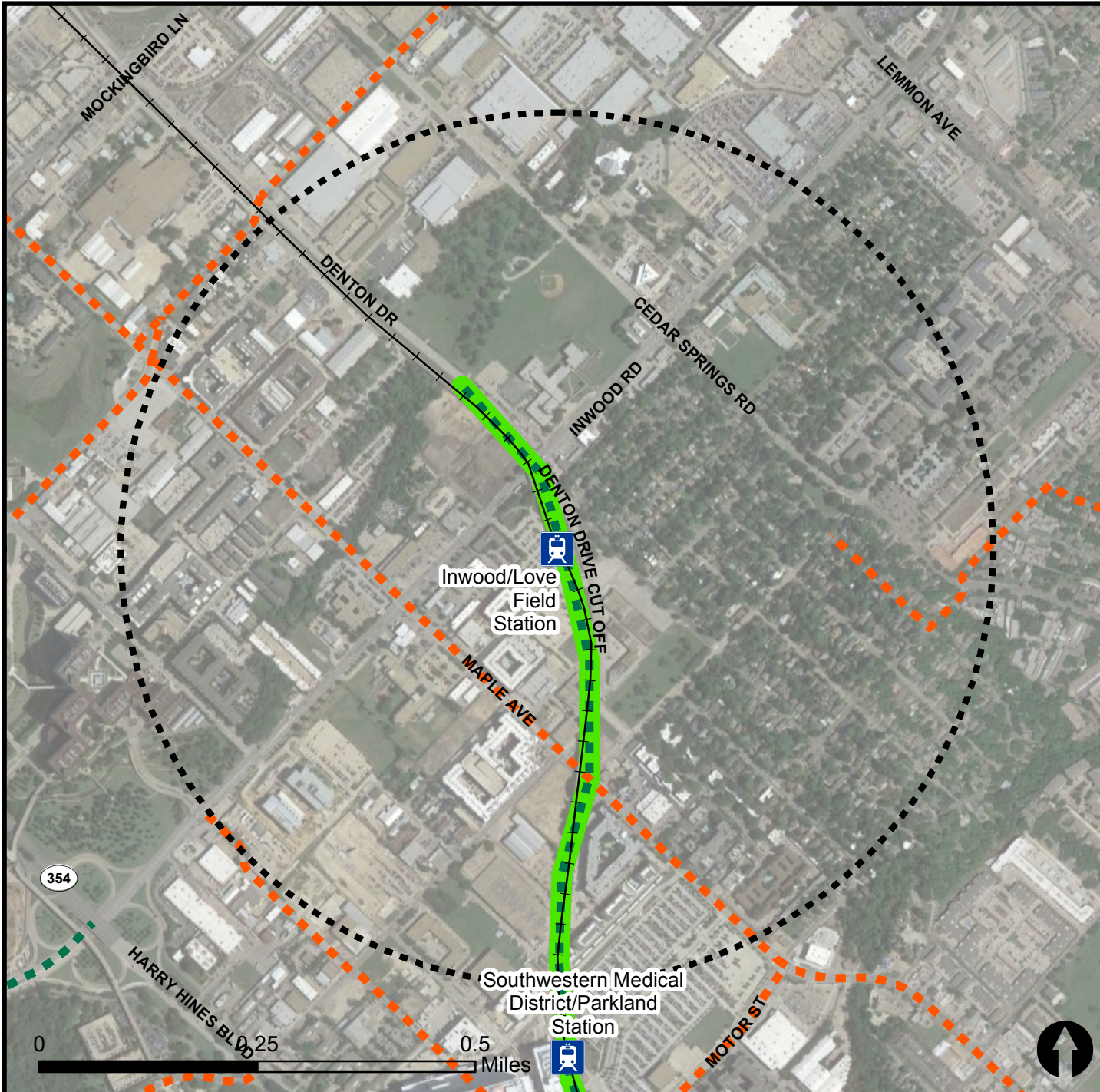


# Bicycle Routes to Rail - Inwood/Love Field Station

Last Updated: October 2016



North Central Texas  
Council of Governments



### Legend

- Rail Stations
- 0.5 Mile Station Buffer
- Rail Lines
- On-Street Bikeway, Existing
- On-Street Bikeway, Planned
- 2040 Veloweb
- Off-Street Path, Existing
- Off-Street Path, Planned

### Project Overview

The Bicycle Routes to Rail study identifies all existing and planned bikeways in proximity to existing or under-construction light rail and commuter rail stations in the Dallas / Fort Worth region based on 2016 data. The maps reflect off-street paths (trails) and streets designated by local adopted master plans for dedicated bikeways (e.g. bike lanes, cycle tracks) located on the street. In accordance with the Texas Transportation Code, bicyclists have a right to the road. As such, the map does not reflect other roadways around the station that may have signed bike routes or by state law may be used by bicyclists. More information about the Routes to Rail study and methodology is available at: [nctcog.org/RoutesToRail](http://nctcog.org/RoutesToRail)

