

Resource Conservation Council – Facility Conformance Subcommittee

January 13, 2026

Caralyn Dawson
Environment and Development Planner II
cdawson@nctcog.org



**Please keep your microphone muted
when not speaking.**

**Please state your name and entity when
you ask a question or provide a
comment.**

Welcome and Introductions

Patricia Redfearn, Ph.D., City of Grand Prairie
Chair, Facility Conformance Subcommittee

Words from the Chair

Patricia Redfearn, Ph.D., City of Grand Prairie
Chair, Facility Conformance Subcommittee

Welcome and Introductions of Applicants and Applicant Representatives

Patricia Redfearn, Ph.D., City of Grand Prairie
Chair, Facility Conformance Subcommittee

Presentation

Nevzat Turan, Principal Engineer, Weaver Consultants Group, will brief the Subcommittee on the Type V Permit Application for the Gateway Drive Transfer Station, located in Collin County.



Regional. Reliable. Everyday.

Regional Service Through Unity:
Meeting Our Region's Needs Today
And Tomorrow

NORTH CENTRAL TEXAS COUNCIL OF GOVERNMENTS

RCC FACILITY CONFORMANCE SUBCOMMITTEE REVIEW

**TYPE V TRANSFER STATION PERMIT APPLICATION
GATEWAY DRIVE TRANSFER STATION
FRISCO, COLLIN COUNTY, TEXAS
JANUARY 13, 2026**

Applicant Overview

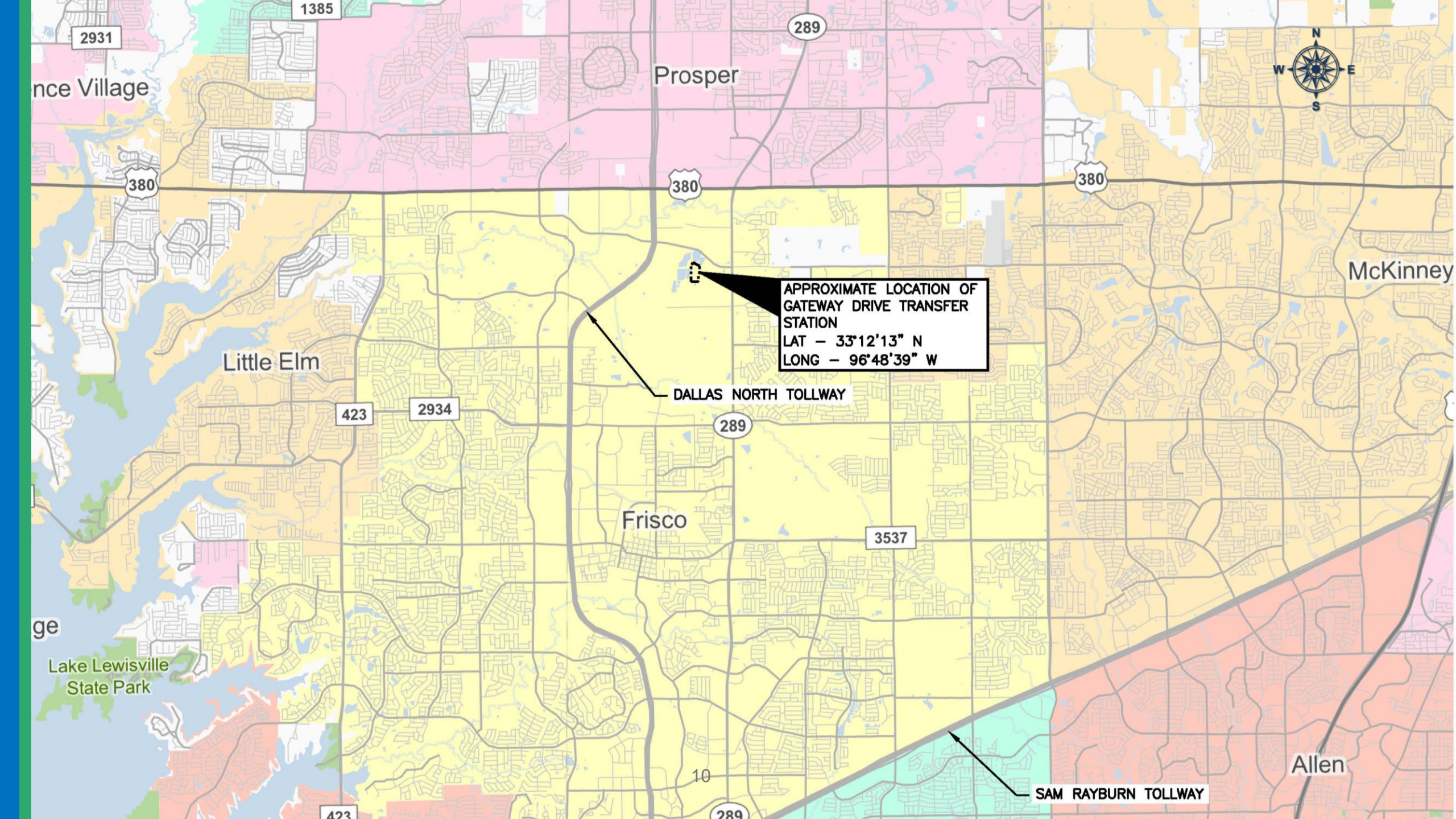
- The applicant is the North Texas Municipal Water District (NTMWD).
- The NTMWD provides vital wholesale water, wastewater, and solid waste management services to more than two million people who call North Texas their home.
- NTMWD currently provides solid waste disposal services to more than 980,000 people from the five Regional Solid Waste System Member Cities (Allen, Frisco, McKinney, Plano, and Richardson), Collin County, Denton County, and the surrounding area.



Transfer Station Overview

- The proposed transfer station (TS) will be located on property owned by the NTMWD on the north side of the City of Frisco in Collin County. It will be approximately 0.2 miles south of the intersection of PGA Parkway and Gateway Drive and 0.65 miles east of Dallas North Tollway.
- The use of the property for a TS is compatible with surrounding land uses.
- The adjacent land consists of a planned industrial park including offices, warehouses, distribution centers, and City of Frisco environmental services.
- A TS Permit Application was submitted to the TCEQ in November 2025.
- The TS will serve the NTMWD's Regional Solid Waste System Member Cities (Currently Allen, Frisco, McKinney, Plano, and Richardson), Collin County, Denton County, and the surrounding areas.

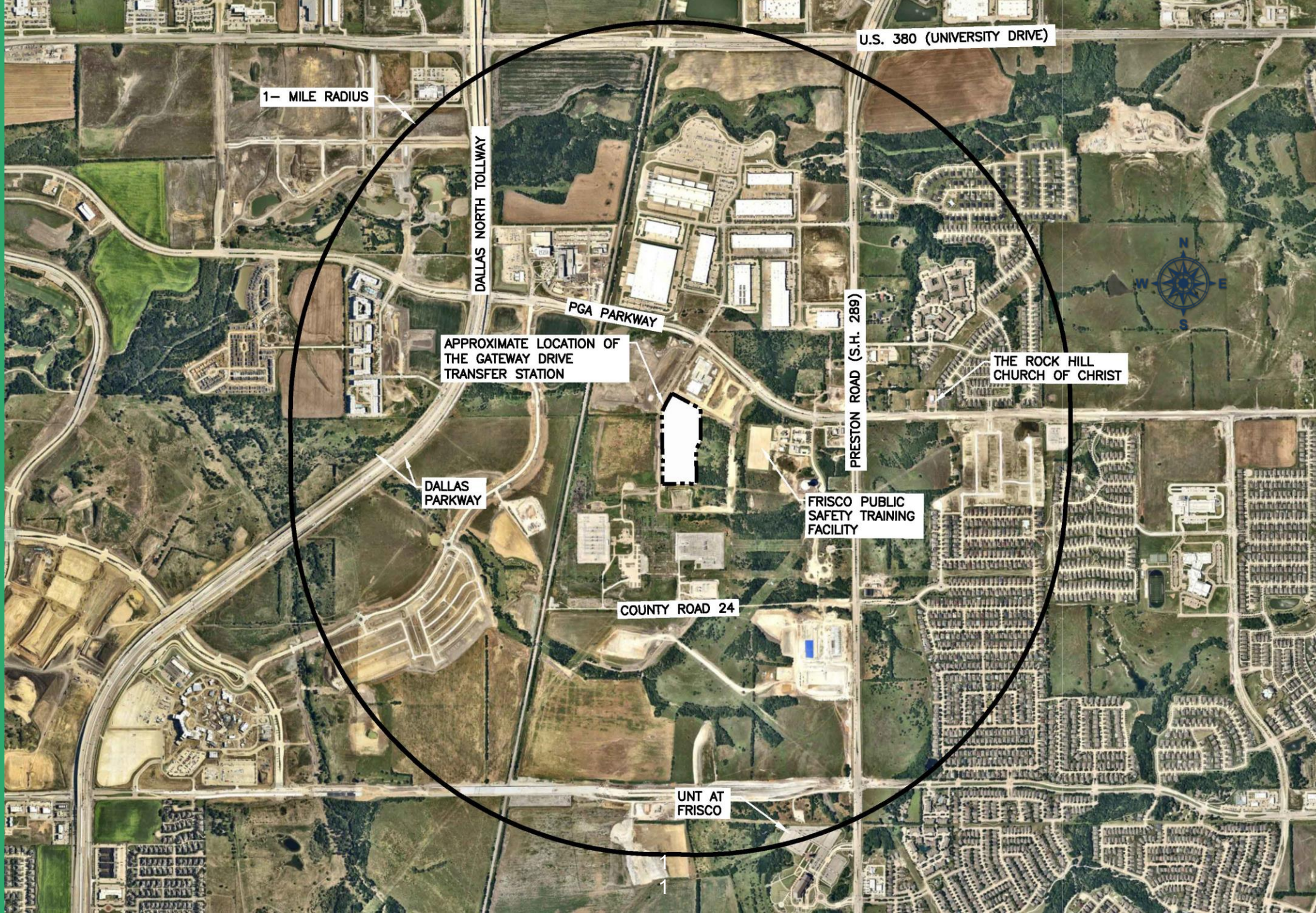




APPROXIMATE LOCATION OF
GATEWAY DRIVE TRANSFER
STATION
LAT - 33°12'13" N
LONG - 96°48'39" W

DALLAS NORTH TOLLWAY

SAM RAYBURN TOLLWAY

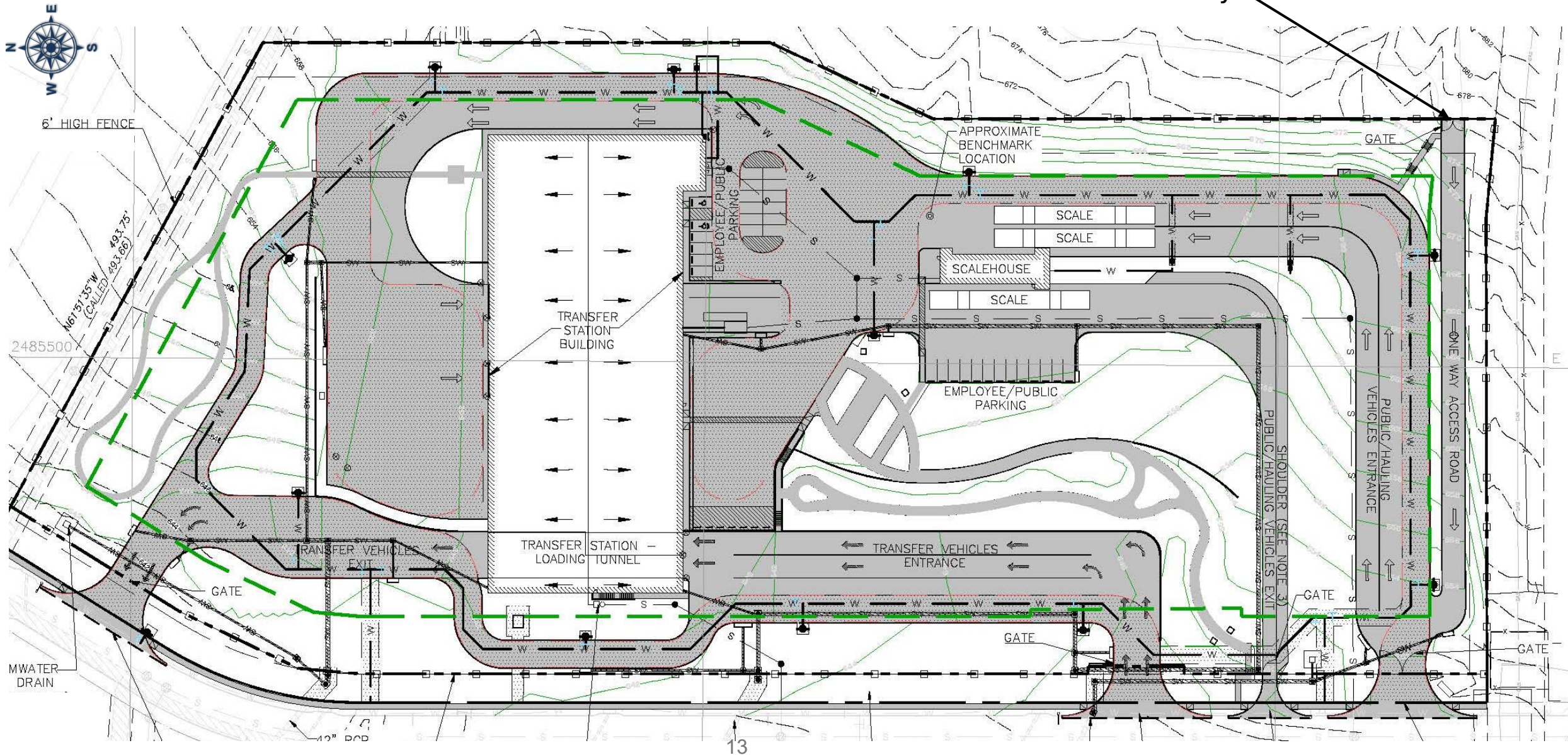


Design Features

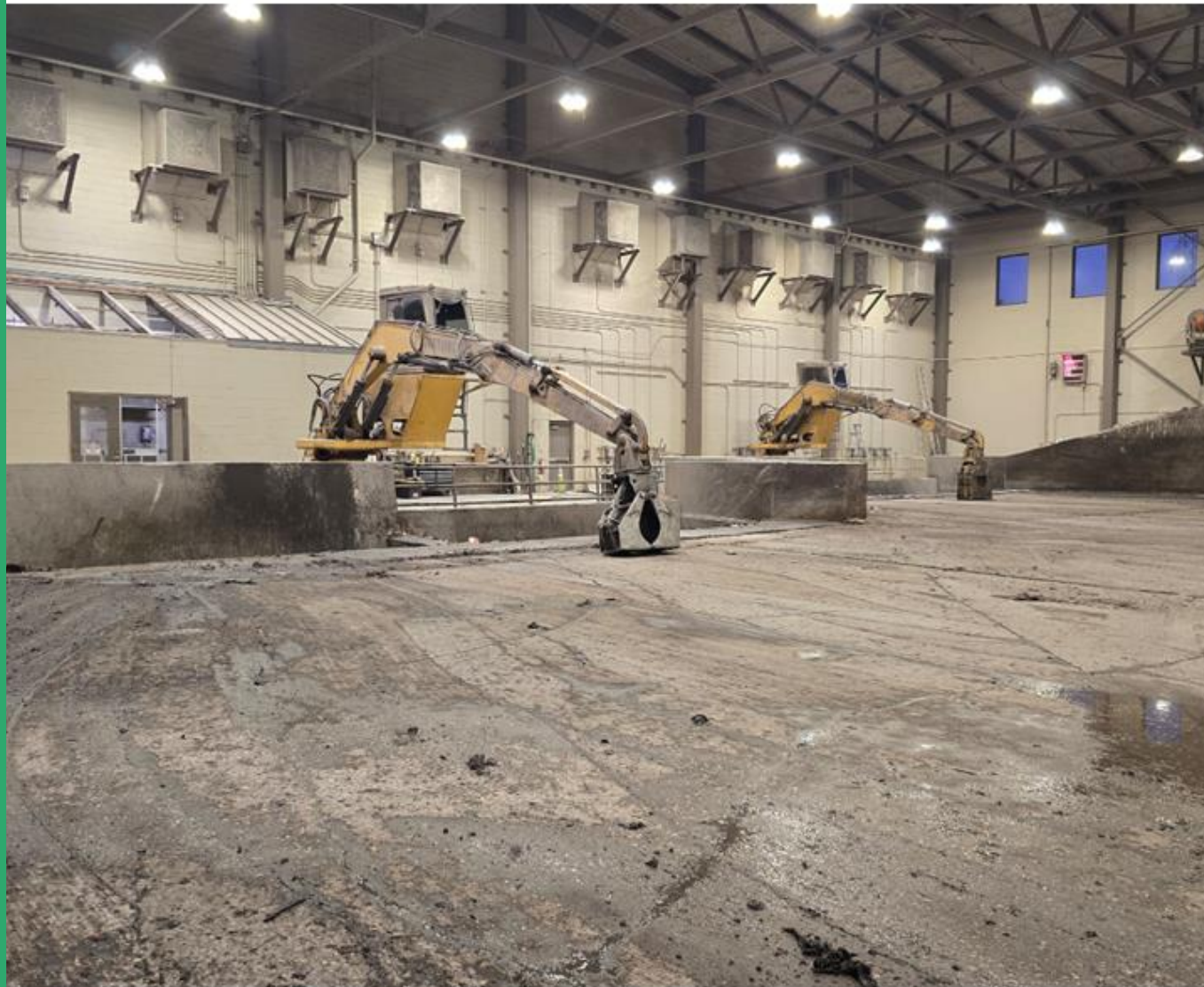
- The TS Facility will be a pre-cast, concrete tilt-wall structure approximately 69,000 square feet with a metal roof and walls covering an open concrete floor and loading tunnel. Ventilation openings will be located on the north and south walls.
- The facility is unique in design and operation:
 - Waste haul vehicles and customers will enter and exit the unloading area from the north and south sides, respectively, of the TS building.
 - Waste will be deposited by collection vehicles onto the west side of the tipping floor.
 - The east side of the TS floor is designated as the citizens' collection station and the recyclables collection area. Recyclables to be collected include white goods, metals, used oil, used oil filters, and tires.
 - Waste will be pushed west to the loading tunnels, where it will be loaded into the transfer trailers using wheel loader(s) with assistance from a grapppler.
 - Trench drains will be located at the sides of the transfer trailer loading tunnel to collect contaminated water.
 - Access roads and parking will be paved.

Transfer Station Site Plan

Dedicated access road from future City of Frisco
Environmental Services Facility



Existing Transfer Station Examples



Lookout Drive Transfer Station

Facility Rendering View Looking Northeast



Facility Rendering View (Scalehouse) Looking Northwest



Facility Rendering View Looking East



Facility Rendering View (TS Entrance) Looking South



Facility Rendering View (Tunnel Exit) Looking Southeast



Types of Waste Accepted

- Household waste, brush, yard waste, commercial solid waste.
- Construction and demolition waste.
- Class 2 and Class 3 Industrial solid waste (non-hazardous).
- Special waste.
- Used oil, used oil filters, whole used or scrap tires or tire pieces, and white goods and metals (source separated for recycling) – No recyclables removed from waste.
- Municipal hazardous waste from a Very Small Quantity Generator (VSQG).

Operations

- Maximum waste processing rate of 3,000 tons/day.
- Proposed hours of operation:
 - 7 AM to 7 PM Monday through Saturday
- Hours for public disposal will be posted on a sign at the entrances.

Support Materials Management Education and Training

- NTMWD provides education to the community through site tours and presentations with local civic leaders, students, and city government officials.
- NTMWD partners with communities to support the “Know what to throw” recycling and composting campaign to educate residents on what can and can’t be recycled and how to compost.

Promote Creation and Expansion of Waste Management Programs

- The TS facility will have a citizens' collection station that will serve waste collection and recycling for the residents of the member cities.
- In partnership with the cities of Allen, Frisco, McKinney, Plano, and Richardson, NTMWD contracts with the City of Plano to operate the compost program.
 - Consists of a wood grind facility at NTMWD's Custer Road Transfer Station in Plano and a compost facility at NTMWD's 121 Regional Disposal Facility in Melissa.

Measure Regional Waste Reduction Efforts

- The TS facility will receive waste from third-party haulers, residents of the Regional Solid Waste System Member Cities, and surrounding areas.
- The TS facility will also have the capacity to accept waste from areas other than those identified to meet the future waste disposal needs of the region.
- The TS facility will provide recycling activities, including white goods, used oil, used oil filters, and tires.

Support and Encourage Innovative Technologies for Other Waste

- NTMWD processes brush and yard waste at the Custer Road Transfer Station in Plano and composts the material at the 121 Regional Disposal Facility.
- The TS facility will provide recycling activities, including white goods, used oil, used oil filters, and tires.

Promote Public and Private Sector Partnerships

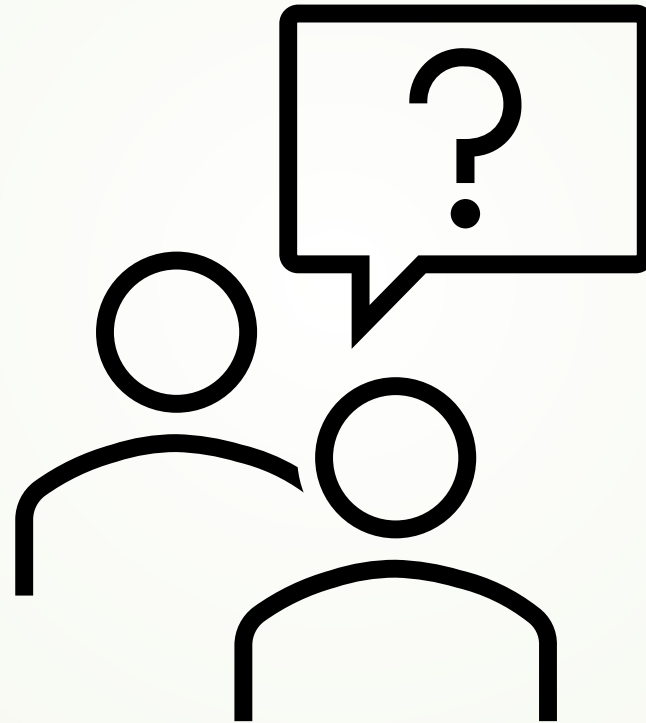
- The TS facility will have a citizens' collection station that will serve waste collection and recycling activities for the residents of the NTMWD Solid Waste System Member Cities.
- The TS facility will also include a dedicated access road from the future City of Frisco Environmental Services Facility to allow Frisco residents dropping off household hazardous waste and recyclables at the Frisco facility to access the transfer station for waste drop-off without having to travel on a public road.

Consistency with NCTCOG Regional Plan

- The permitting and operation of the Gateway Drive Transfer Station is consistent with the NCTCOG Regional Plan, supporting the safe, efficient, and cost-effective transport of waste to a properly permitted MSW landfill.
- The Gateway Drive Transfer Station will serve the needs of the NTMWD Regional Solid Waste System Member Cities (currently Allen, Frisco, McKinney, Plano, and Richardson) and surrounding communities for many years into the future in a manner that is protective of the environment.
- The Transfer Station will accommodate and support ongoing and future development.

Questions?

Q&A For Applicant



Action Item

The Subcommittee will discuss the Permit Application for the Gateway Drive Transfer Station, located in Collin County, and vote whether to recommend to the Resource Conservation Council (RCC) that the application conforms to the North Central Texas Regional Solid Waste Management Plan.

Presentation

Chuck Marsh, Senior Project Director, Weaver Consultants Group, will brief the Subcommittee on the Type V Registration Application for the Dick Price Road Transfer Station, located in Tarrant County.



WASTE CONNECTIONS
Connect with the Future®

NORTH CENTRAL TEXAS COUNCIL OF GOVERNMENTS
RCC FACILITY CONFORMANCE
SUBCOMMITTEE REVIEW
DICK PRICE ROAD TRANSFER STATION
TEXAS REGIONAL LANDFILL COMPANY, LP

Type V Transfer Station Registration Application
Tarrant County, Texas

January 13, 2026



WASTE CONNECTIONS
Connect with the Future®

Applicant Overview

- The applicant is Texas Regional Landfill Company, LP, an affiliate of Waste Connections (WC).
- Texas is WC's home state and represents one of its largest service areas in North America.
- WC provides collection, hauling, transfer, diversion/recycling, and disposal services in North Central Texas and throughout the state of Texas.
- Waste Connections owns and/or operates thirteen transfer stations in Texas, including facilities in Houston, Austin, Johnson City, Fort Worth, East Texas, and North Texas.

Facility Overview



- The transfer station (TS) is located within the Type IV permit boundary of the Fort Worth C&D Landfill in Tarrant County.
- The TS will provide WC the ability to collect, process, load, and transport solid waste more efficiently by allowing small solid waste collection vehicles to transfer the solid waste into larger transfer trailers before transport to a permitted MSW landfill.
- The registration boundary is designated as OCL (Outside City Limits) in Fort Worth's and Kennedale's Zoning Maps. Tarrant County does not have zoning designations.
- Land use within a 1-mile radius of the property is predominantly undeveloped, floodplain, open/agricultural lands, and single-family residential with scattered commercial and light industrial facilities located in the near vicinity of the landfill property.

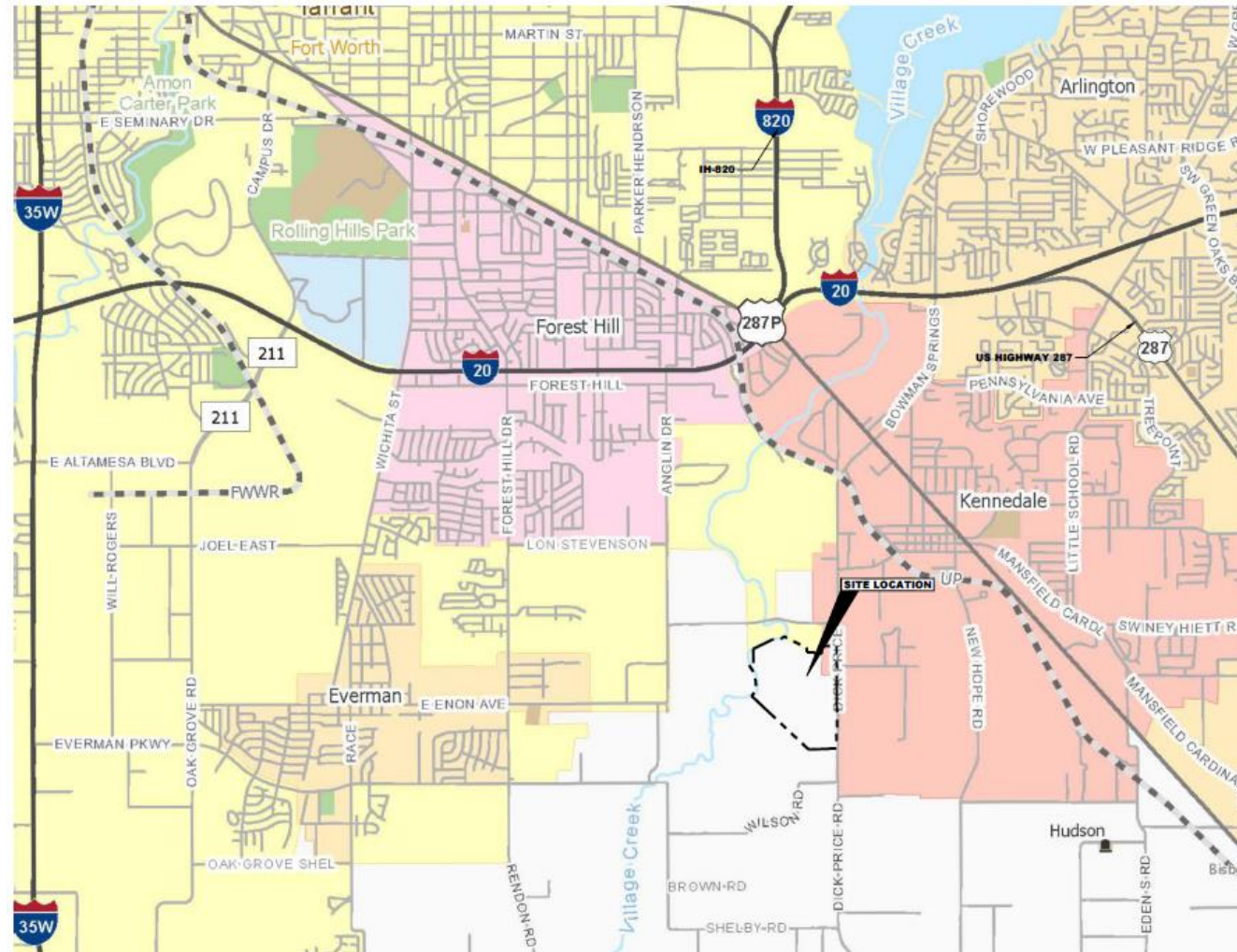
Facility Overview

- The TS is being permitted as a registration by TCEQ because it is located within a permit boundary of a permitted landfill per 30 TAC §330.9(b)(4).
- This rule allows a TS located within the permitted boundaries of an MSW Type I or Type IV facility to be permitted as a registration.
- The TS will serve the residences and businesses of Fort Worth, Kennedale, and other communities in and around Tarrant County.
- The registration boundary coincides with the landfill's permit boundary, which is approximately 184.3 acres.
- The entrance facilities will serve both the landfill and the TS.
- The facility's physical address is 4144 Dick Price Road, Fort Worth.



WASTE CONNECTIONS
Connect with the Future®

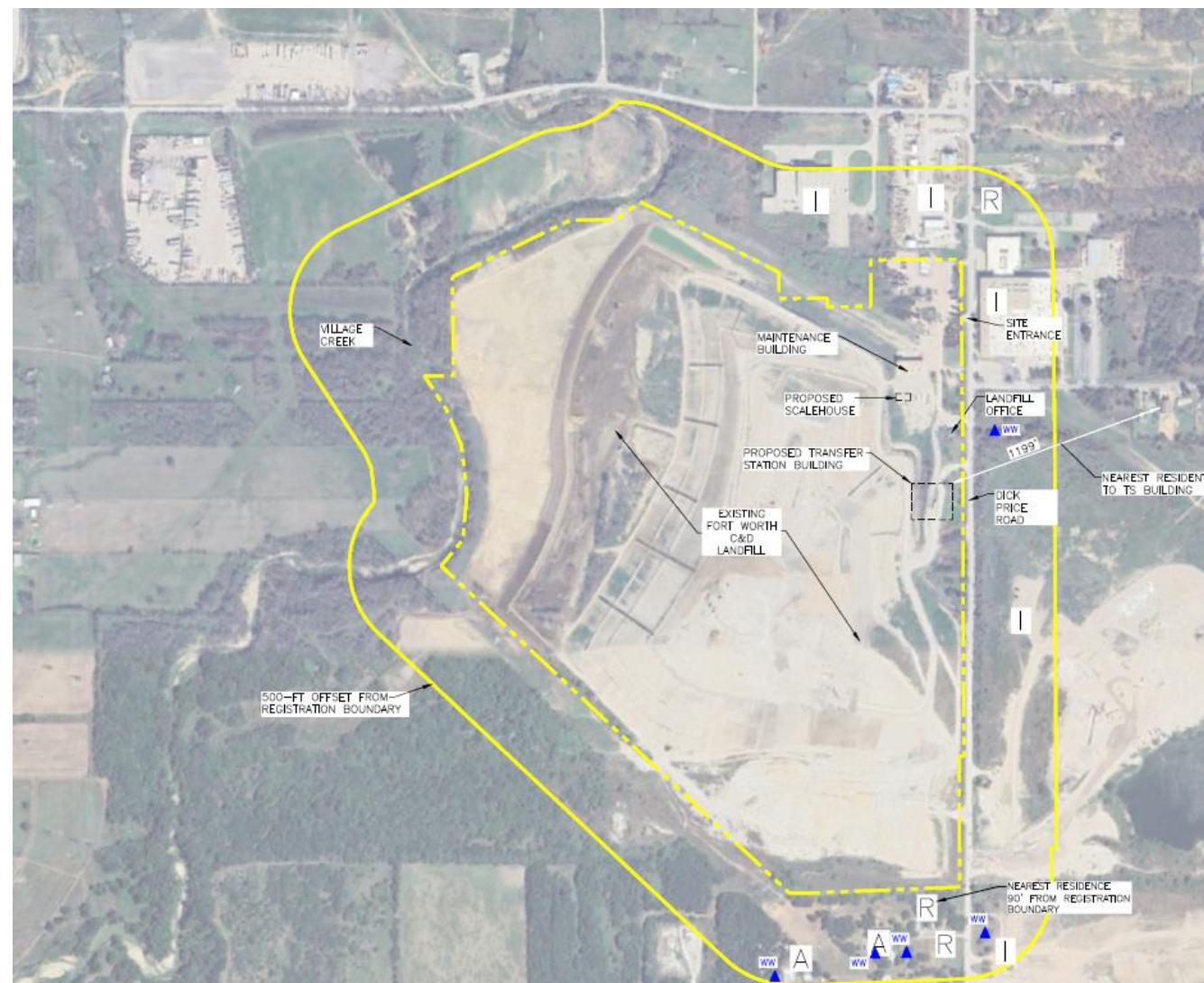
Transfer Station Location



Transfer Station Property – Aerial View



WASTE CONNECTIONS
Connect with the Future®





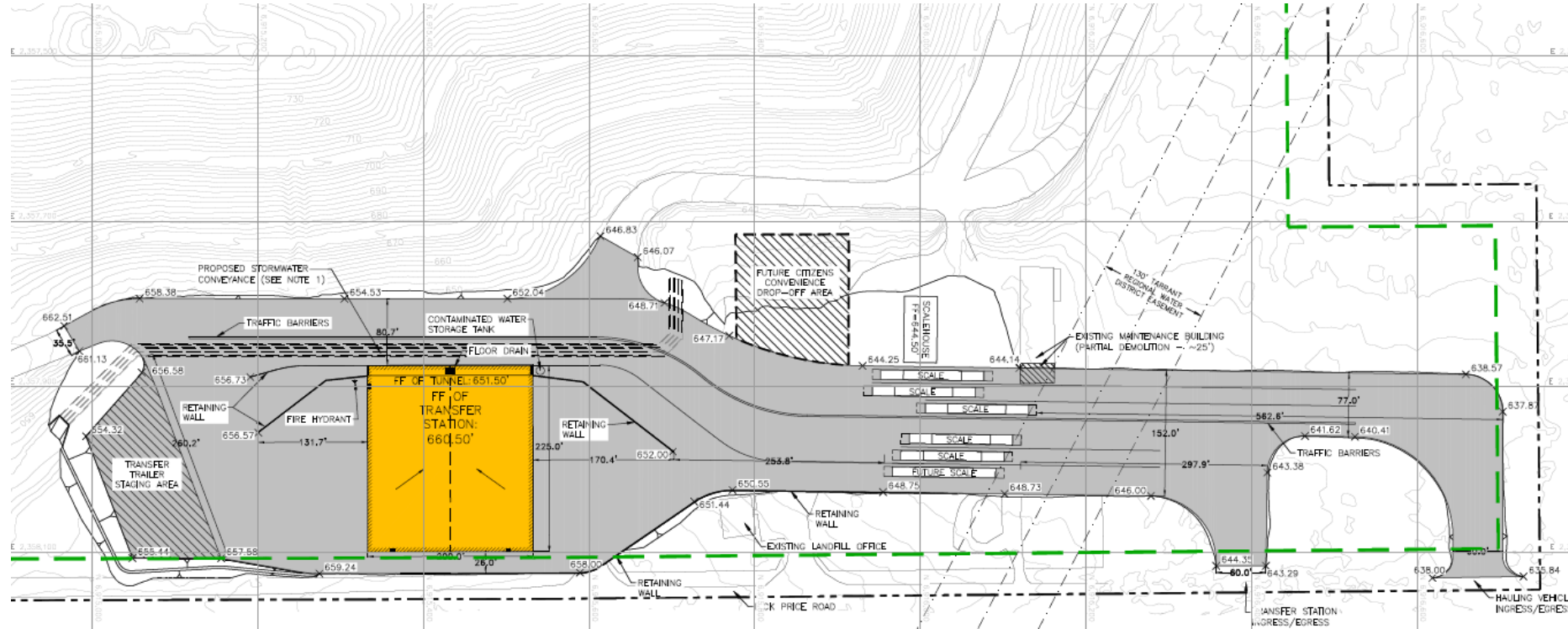
Transfer Station Design Features

- The facility will include a 200-ft by 225-ft covered transfer station structure with a reinforced concrete pad (tipping floor) and single tunnel. Citizens may dispose of waste at the citizens' convenience drop-off area.
- The design and operation:
 - Waste will be deposited by collection vehicles onto the tipping floor.
 - Waste is loaded directly from the tipping floor into transport trailers using front-end loaders.
 - Transfer trailers load-out tunnel (half tunnel) is located on the west end of the building.
 - Access roads and parking are paved.
 - Visual screening provided by a screening fence along Dick Price Road and the TS building walls.
 - Material recovery and diversion operations, which will continue, are independent of the transfer station operations.
 - An easy-access citizens' drop-off area is planned for the residents.

Transfer Station Site Plan



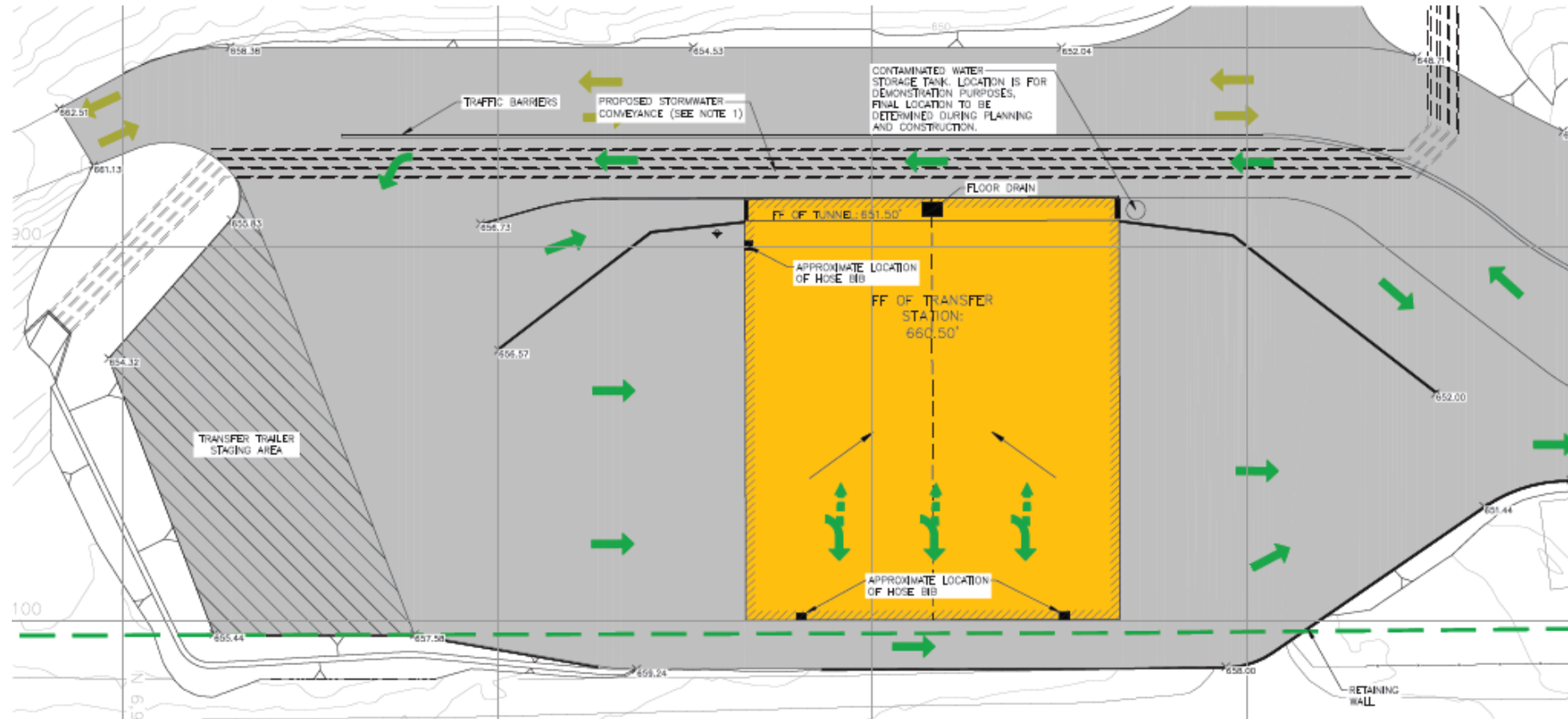
WASTE CONNECTIONS
Connect with the Future®



Transfer Station Building Plan And Traffic Patterns



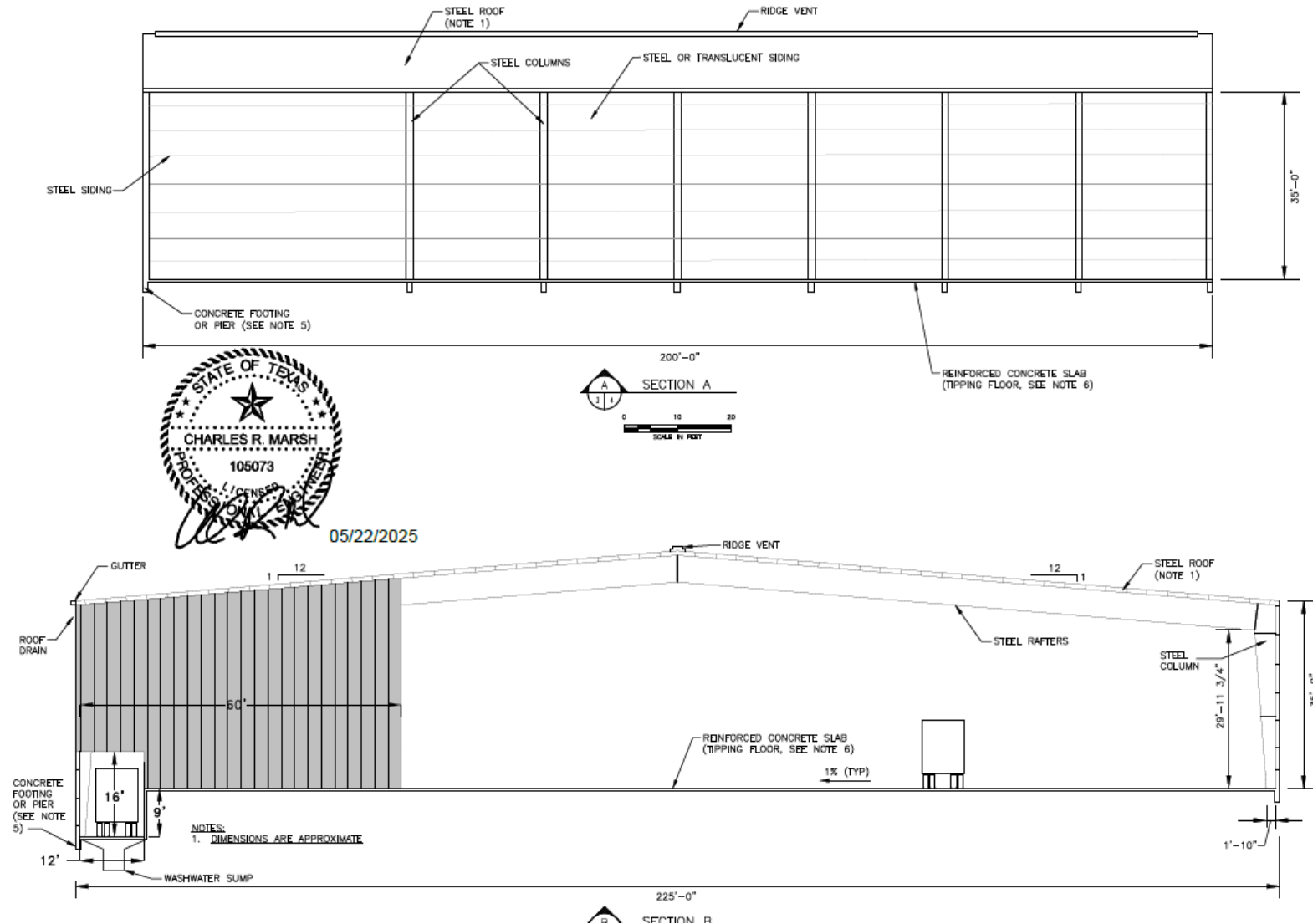
WASTE CONNECTIONS
Connect with the Future®



Transfer Station Sections



WASTE CONNECTIONS
Connect with the Future®





Types Of Waste Accepted

- Municipal Solid Waste from residential, commercial, community, institutional, and recreational activities
- Construction and Demolition Waste will be diverted to the landfill.
- Yard waste for composting may be diverted to the currently permitted compost operation.
- Class 2 and Class 3 Industrial Solid Waste (ISW)
- Special Waste
- Household waste at the citizens' drop-off station
- Prohibited waste: Hazardous Waste, Class 1 ISW, and Liquid Wastes



Transfer Station Operation

- Maximum Waste Processing Rate of 3,000 Tons/Day
- Proposed Hours of Operation
 - 4 AM to 8 PM seven days per week
 - Administrative activities and maintenance may occur 24/7.
- Hours for public disposal will be posted on a sign at the entrance

Transfer Station Is Consistent With NCTCOG Regional Plan

- The permitting and operation of the Dick Price Road TS is consistent with the NCTCOG Regional Plan in that it will provide for the continued safe and effective transporting of waste a long distance to a licensed MSW landfill in a cost-effective manner.
- This facility will also aid in addressing long-term disposal needs for the service area.
- The Dick Price Road TS will serve the needs of the Cities of Fort Worth and Kennedale, and surrounding communities for many years into the future in a manner that is protective of the environment.



Transfer Station Is Consistent With NCTCOG Regional Plan

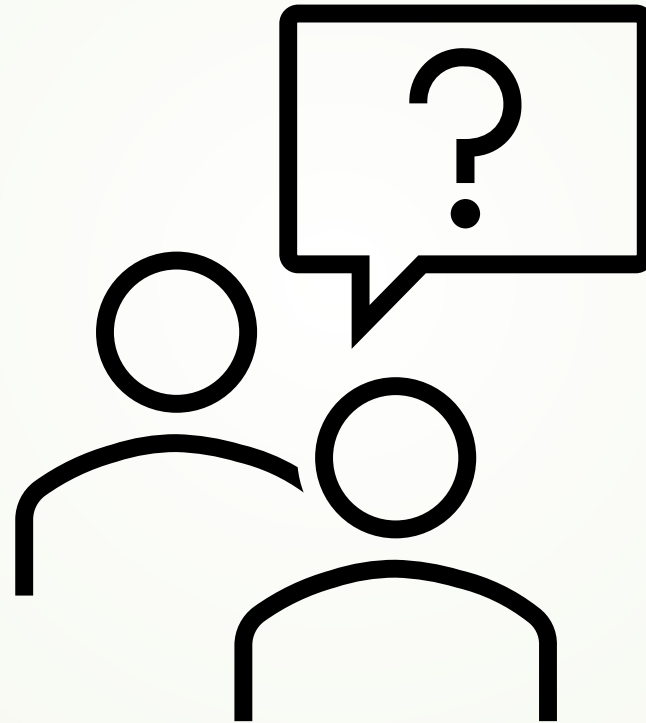
- Waste Connections participates in waste/recycling education and cleanup events hosted at the WC facilities in the region. The TS will support any educational activity along with the Type IV landfill.
- Availability of extended areas within the registration (landfill permit) boundary will provide additional opportunities for waste diversion as the market conditions change.
- Waste Connections will continue to provide material recovery and/or diversion by this service location and other WC facilities in the region.
- As part of the company's core business plan, Waste Connections will continue to encourage the development of a regional recycling program, even if the current recycling collection market is very small.
- Waste Connections will continue to seek material recovery opportunities with the communities, private, and public partners in the NCTCOG region.



WASTE CONNECTIONS
Connect with the Future®

Thank You for This Opportunity to
Present the Dick Price Road
Transfer Station

Q&A For Applicant



Action Item

The Subcommittee will discuss the Permit Application for the Dick Price Road Transfer Station, located in Tarrant County, and vote whether to recommend to the Resource Conservation Council (RCC) that the application conforms to the North Central Texas Regional Solid Waste Management Plan.

Presentation

Chuck Marsh, Senior Project Director, Weaver Consultants Group, will brief the Subcommittee on the Transfer Station Permit Application for the WC Weatherford Transfer Station, located in Parker County.



WASTE CONNECTIONS
Connect with the Future®

NORTH CENTRAL TEXAS COUNCIL OF GOVERNMENTS
RCC FACILITY CONFORMANCE
SUBCOMMITTEE REVIEW
WC WEATHERFORD TRANSFER STATION
WASTE CONNECTIONS LONE STAR, INC.

Type V Transfer Station Registration Application
Parker County, Texas

Revised January 13, 2026

Applicant Overview

- The applicant is Waste Connections Lone Star, Inc., an affiliate of Waste Connections (WC).
- Texas is WC's home state and represents one of their largest service areas in North America.
- WC provides collection, hauling, transfer, diversion/recycling, and disposal services in North Central Texas and throughout the state of Texas.
- Waste Connections owns and/or operates thirteen transfer stations in Texas, including facilities in Houston, Austin, Johnson City, Fort Worth, East Texas, and North Texas.

Facility Overview

- The transfer station (TS) is located on property owned by WC in the City limits of Weatherford, directly across the street from the TCEQ-permitted Weatherford Landfill, which is at final capacity.
- The TS was permitted and constructed to replace the Weatherford Landfill as the primary waste disposal facility to serve the needs of the City of Weatherford, Parker County and surrounding communities while creating a collaborative means to promote recycling through diversion.
- The City of Weatherford rezoned the property Industrial (I) and issued a Conditional Use Permit in December 2018 to facilitate development of the TS. The use of the property for a TS is compatible with surrounding land uses.

Facility Overview

- The TS was initially permitted as a registration by TCEQ on September 18, 2019, in accordance with §330.9(e)(1) and (2), which requires 10% material recovery or diversion as well as requiring a disposal facility to be located within 50 miles.
- The TS serves as the primary waste disposal facility for residences and businesses of Weatherford, Fort Worth, and other communities in and around Parker County. The TS is the only TS in Parker County, with the next closest TS located 22 miles east of the Weatherford TS.
- The permit property is approximately 14.6 acres, and is located approximately 1.7 miles (by roadway) south of Interstate Highway 20, on Old Brock Road
- Surrounding land use is primarily agricultural, open space, and low-density rural residential. The Weatherford Landfill is located adjacent to and across Old Brock Road from the TS.

Overview Of Proposed Changes

- Change the TCEQ authorization from a Registration to a Permit
- The TS provides the only means of solid waste management to the City of Weatherford, as the landfill is mothballed. WC is contracted to provide disposal capacity to the City, and constructing/operating this transfer station is a contractual requirement.
- No change to waste acceptance days & hours
- No change to waste types received
- No change in capacity to accept and transfer recyclable materials
- No change in design waste transfer capacity
- No physical changes to the facility

Purpose For Proposed Changes

- Type V Registration requires 10% of material recovery/diversion in the area. For example, accepting 950 tpd, requires 95 tons of material recovery or diversion in the area.
- Waste Connections complies with the 10% waste stream reduction requirement through collaborative source-separation, curbside recycling, and C&D material recovery efforts with sister hauling companies, the City of Weatherford, as well as the customers they service.
- The growing need for waste disposal in the area serviced by the TS is outpacing the demand for material recovery within the same area. This limits the waste transfer capacity of the TS to the extent that it would be impractical to provide the solid waste services needed for the area, solely under a TCEQ registration.
- This region relies on this facility for a large portion of solid waste transfer capacity, as there are no other nearby, reasonable disposal options nearby.

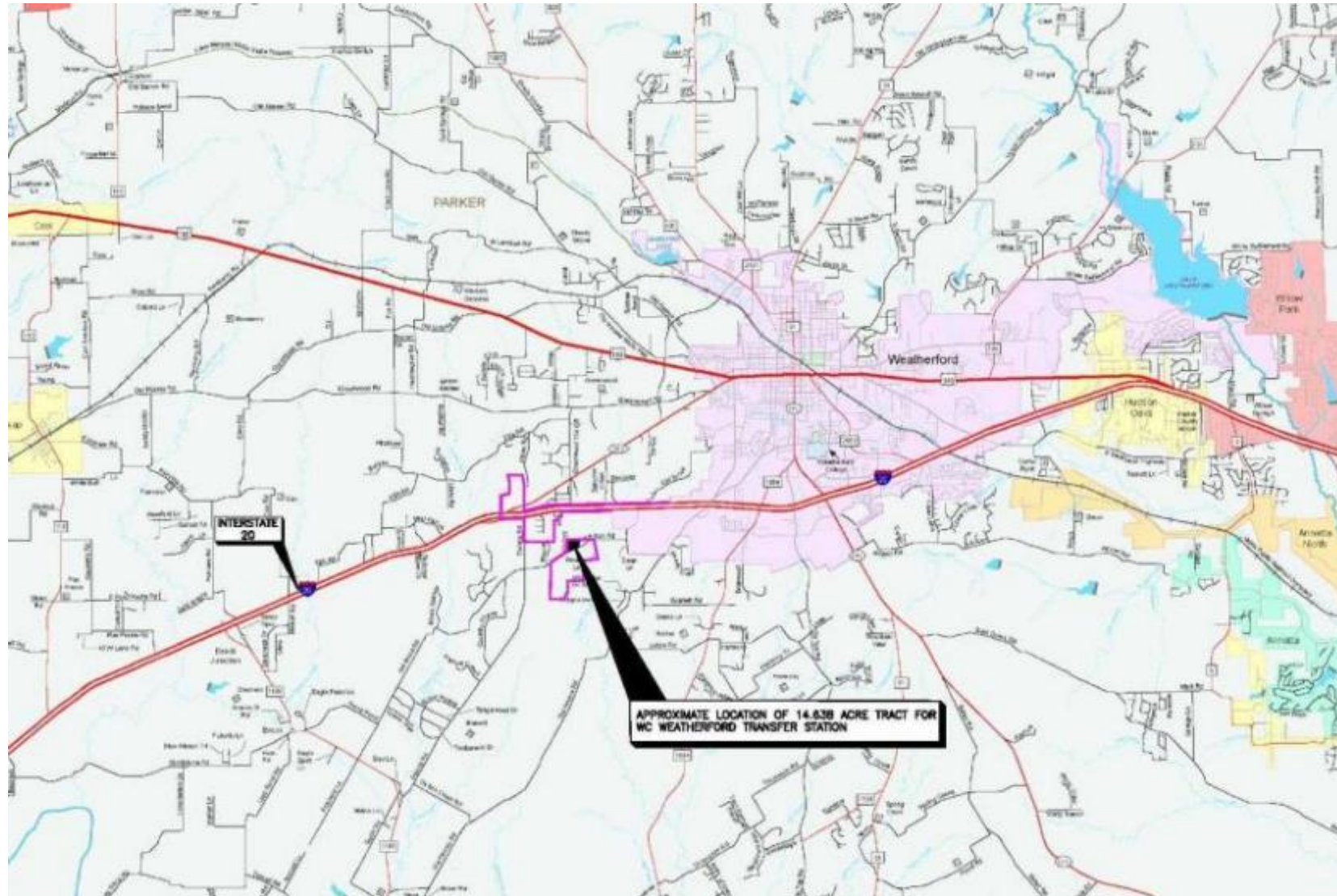
Purpose For Proposed Changes

- Converting to a permit will remove the material recovery percentage requirement, as a limiting factor of service, and allow uninterrupted growth of waste disposal services for the area, as needed.
- Waste Connections will continue its effort to encourage material recovery as before, without the limitations imposed by the Registration.
- As part of the Waste Connections core business plan, the company continuously seeks to develop reliable recycling solutions across the country, and it welcomes any opportunity in the NCTCOG region for collaboration to further the recycling market.



WASTE CONNECTIONS
Connect with the Future®

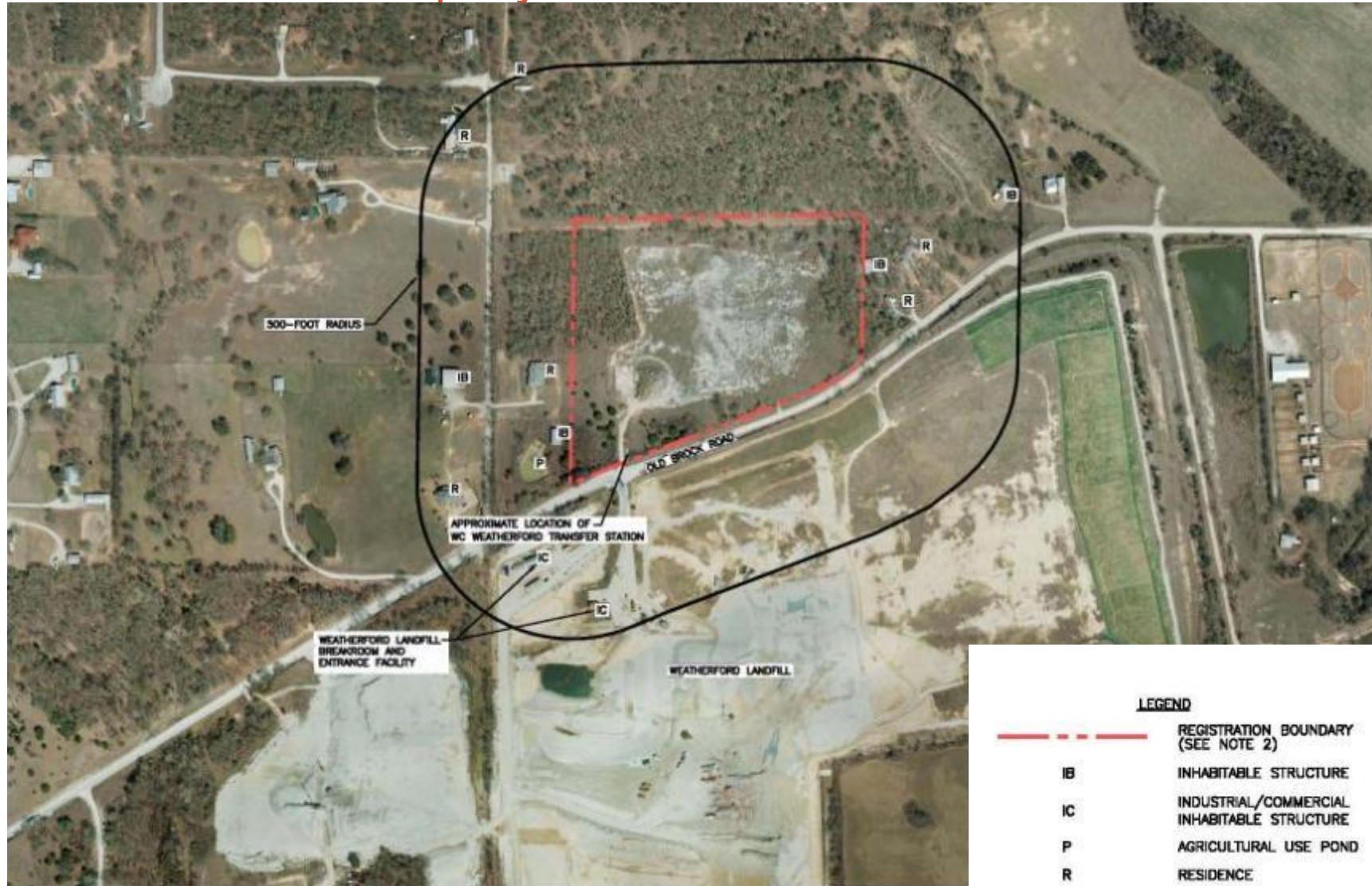
Transfer Station Location





WASTE CONNECTIONS
Connect with the Future®

Transfer Station Property – Aerial View





Transfer Station Design Features

- The facility will include a 120-ft by 170-ft covered transfer station structure with a reinforced concrete pad (tipping floor). Citizens will be allowed to dispose of waste at the facility.
- The facility is unique in design and operation:
 - Waste will be deposited by collection vehicles onto the tipping floor.
 - Waste is loaded directly from the tipping floor into transport trailers using grapples or front-end loaders.
 - Improved safety during operations (compared to tipping floor with tunnel and hoppers) and flow through the transfer station.
 - No load-out tunnel required. Access roads and parking are paved.
 - Visual screening provided by distance, site contours, and vegetation (trees and shrubs).
 - Material recovery and diversion operations, which will continue, are independent of the transfer station operations.
 - An easy-access citizens' drop-off area is provided for the residents.

Transfer Station Site Plan



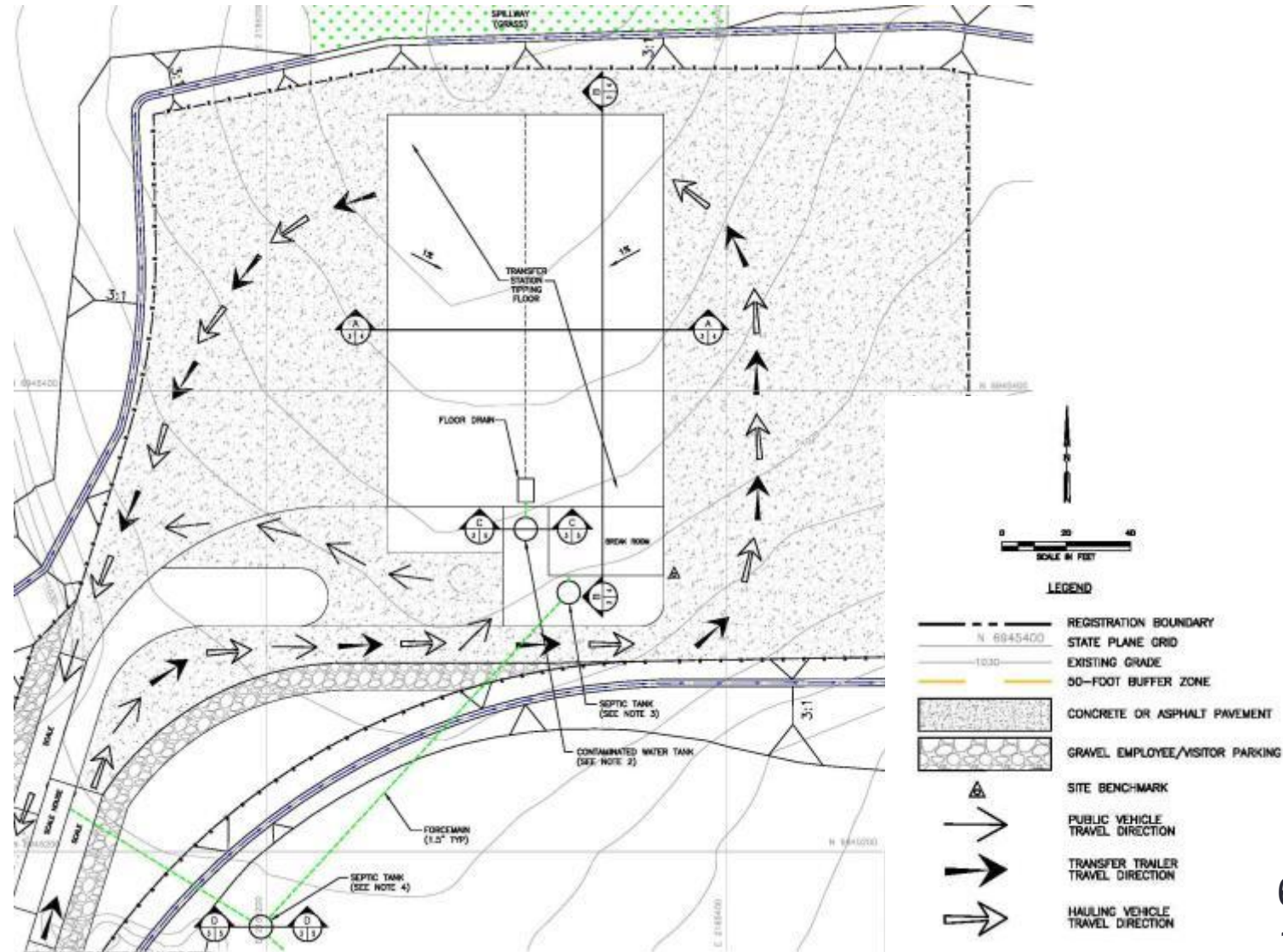
WASTE CONNECTIONS
Connect with the Future®





WASTE CONNECTIONS
Connect with the Future®

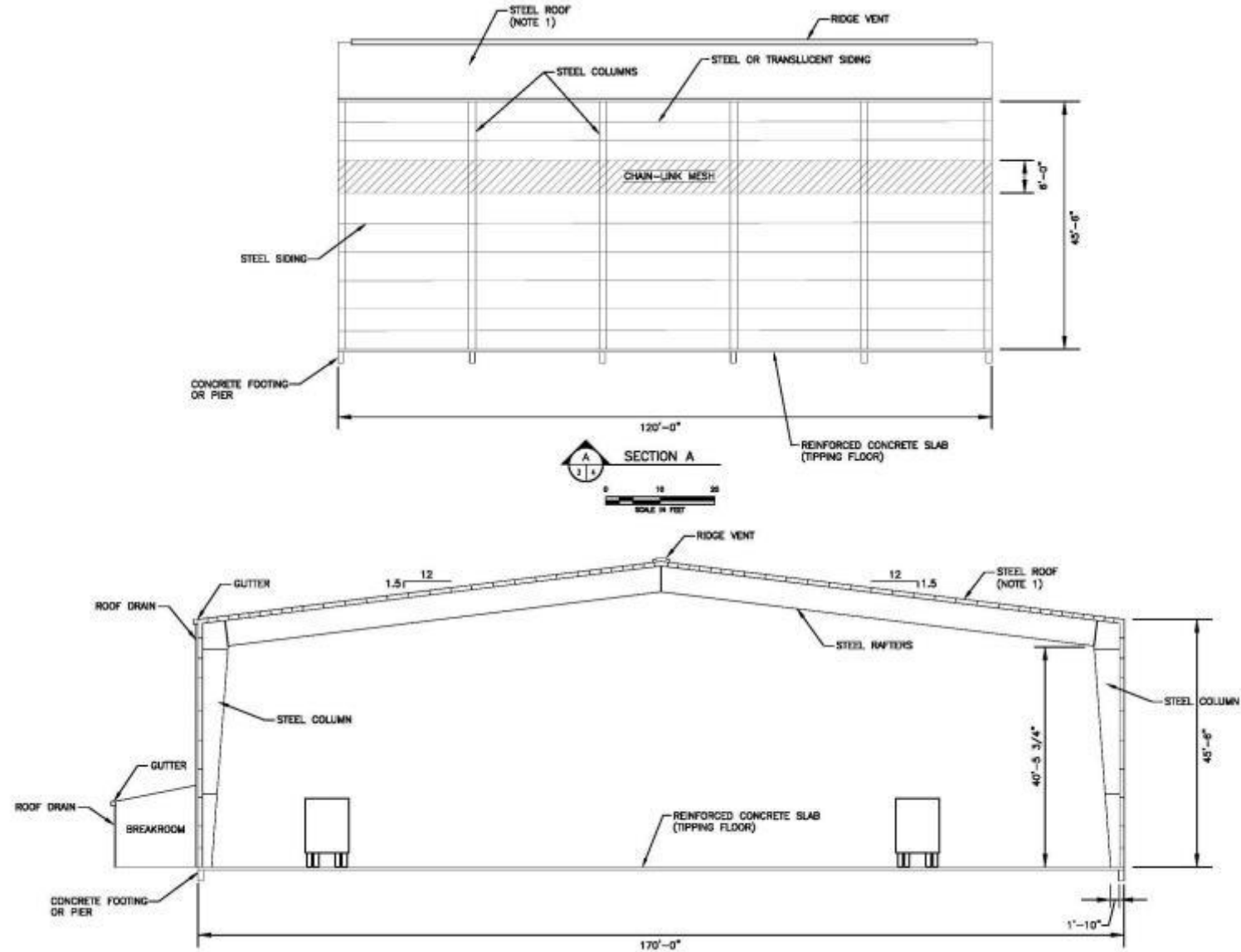
Transfer Station Building Plan And Traffic Patterns





WASTE CONNECTIONS
Connect with the Future®

Transfer Station Sections





WASTE CONNECTIONS
Connect with the Future®

Facility Example

Representative Design and Operations





WASTE CONNECTIONS
Connect with the Future®

Facility Specifics

Waste Discharged onto Tipping Floor





WASTE CONNECTIONS
Connect with the Future®

Facility Specifics

Grappler Staging Waste





WASTE CONNECTIONS
Connect with the Future®

Facility Specifics

Grappler Loading Waste Into Trailer





Types Of Waste Accepted

- Municipal Solid Waste from residential, commercial, community, institutional, and recreational activities
- Construction and Demolition Waste
- Class 2 and Class 3 Industrial Solid Waste (ISW)
- Special Waste
- Household waste at the citizens' drop-off station
- Source separated recyclables
- Prohibited waste: Hazardous Waste, Class 1 ISW, and Liquid Wastes



Transfer Station Operation

- Projected Initial Waste Processing Rate of approximately 950 Tons/Day
- Maximum Waste Processing Rate of 2,000 Tons/Day
- Proposed Hours of Operation
 - 5AM to 7PM Monday thru Saturday
 - 7AM to 12PM Sunday
- Hours for public disposal will be posted on sign at entrance

Transfer Station Is Consistent With NCTCOG Regional Plan

- The permitting and operation of the WC Weatherford Transfer Station is consistent with the NCTCOG Regional Plan in that it provides for the continued safe and effective transporting of waste a long distance to a licensed MSW landfill in a cost-effective manner.
- The WC Weatherford Transfer Station will serve the needs of the City of Weatherford and surrounding communities for many years into the future in a manner that is protective of the environment.
- The WC Weatherford Transfer station is the only one in Parker County.



Transfer Station Is Consistent With NCTCOG Regional Plan

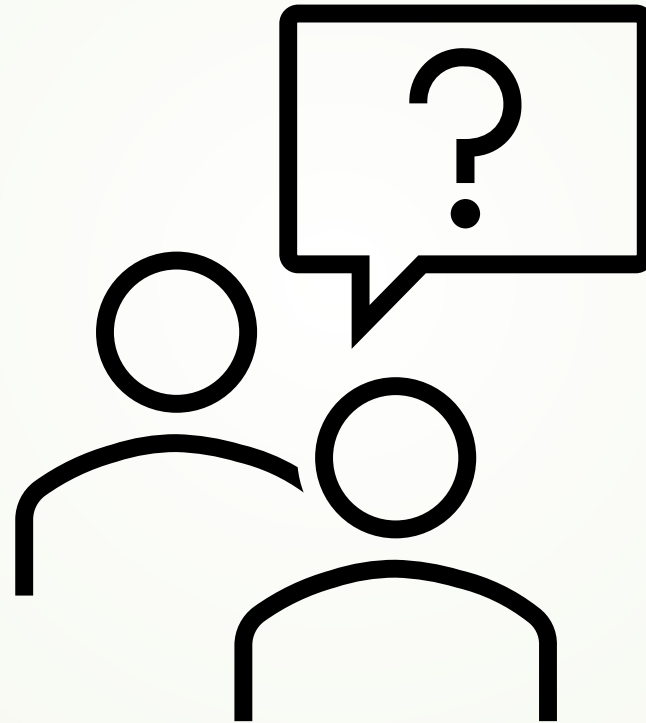
- Waste Connections participates in waste/recycling education and cleanup events, hosted at this TS and other WC facilities in the region.
- Waste Connections will continue to provide material recovery and/or diversion by this TS and other WC facilities in the region.
- As part of the company's core business plan, Waste Connections will continue to encourage the development of a regional recycling program, even if the current recycling collection market is very small.
- Waste Connections will continue to seek material recovery opportunities with the communities, private, and public partners in the NCTCOG region.



WASTE CONNECTIONS
Connect with the Future®

Thank You for This Opportunity to
Present the WC Weatherford
Transfer Station

Q&A For Applicant



Action Item

The Subcommittee will discuss the Permit Application for the WC Weatherford Transfer Station, located in Parker County, and vote whether to recommend to the Resource Conservation Council (RCC) that the application conforms to the North Central Texas Regional Solid Waste Management Plan.

Presentation

Todd Stiggins, Civil Engineer, Parkhill, will brief the Subcommittee on the Type V Permit Application for the SouthWaste Disposal Dallas facility, located in Tarrant County.



A **WRM** *Company*

Dallas Amendment Presentation

SOUTHWASTE

- ▶ From the drain to the main, Southwaste is a full-service liquid waste management company that specializes in the collection and processing of brown grease, grit, septage, and more.
- ▶ We are a one-stop-shop that serves restaurants, car washes, schools, commercial commissaries, and food & beverage processing facilities.
- ▶ Founded in 1948, we provide practical management solutions to all major Texas markets and Central Florida. We are based in Houston, TX.
- ▶ We are a part of the WRM family of companies



Southwaste Services

Grease Trap
Service

Pump Truck
Services

Hydro-
Jetting
Services

Lint & Grit
Services

Septic
Plumbing &
Maintenance

Grease Trap Cleaning & Pumping

Highly-trained technicians use 3,000 psi of water to clean the interior of the trap after evacuation.

Grease traps are maintained on a routine cycle within specified service windows.

We maintain paperwork and relationships with local enforcement personnel concerning trap ordinances.

24/7 response time for customers on a service cycle.

LEADERS IN LIQUID WASTE MANAGEMENT

- ▶ Waste Resources Management (WRM) is a vertically-integrated environmental services company that owns and operates a portfolio of companies focused on the processing, recycling, and/ or transport of liquid waste. Grease trap waste serves as the nexus waste stream managed by WRM companies with other premium liquid waste streams managed on a market-by-market basis in order to maximize operational efficiency and profitability in each market.
- ▶ Through its operating companies, WRM serves over 10,000 clients including restaurants, grocery stores, hotels/casinos, prisons, stadiums, hospitals, school districts, and commercial car washes.
- ▶ Our portfolio companies share three things in common: Exceptional Customer Service, Around the Clock Response, and a Commitment to Sustainability.



SERVICE AREA

MSW Permit 2256C Amendment

Waste Acceptance Rates

- Maximum Rate Under 2256A
 - 32,000,000 gallons-per-year
 - 87,600 gallons-per-day
- Maximum Rate Under 2256B
 - 50,000,000 gallons-per-year
 - 137,000 gallons-per-day
- Maximum Rate Under 2256C
 - 90,000,000 gallons-per-year
 - 246,575 gallons-per-day
- Daily Waste Maximum:
 - 360,000 gallons-per-day

MSW Permit 2256C Amendment

Permitted Waste Streams

- **Grease trap waste from commercial and industrial sources;**
- Industrial wastes, including non-hazardous Class 1, Class 2, and Class 3 waste;
- Grit trap waste from commercial and industrial sources;
- Lint trap waste;
- Sludges from municipal and industrial wastewater treatment;
- Septage from residential and commercial sources;
- Chemical toilet waste;
- Waste from commercial and industrial oil-water separators; and
- Tank wash water generated at the onsite tank washing facility.

MSW Permit 2256C Amendment

Process Information

- Facility processes include filtration, separation by heat, flocculation, chemical adjustment, and dissolved air flotation.
- Liquids are treated to industrial pretreatment standards and discharged to sanitary sewer regulated by an Industrial Wastewater Discharge Permit No. C-25-015 from City of Mansfield.
- Liquids in the sewer system are treated at Trinity River Authority (TRA) Central Regional Wastewater System Wastewater Plant.
- Sludge and solids are disposed at a landfill permitted to accept waste.
- Oil is recovered from the grease cap and sold as a biofuel.

MSW Permit 2256C Amendment

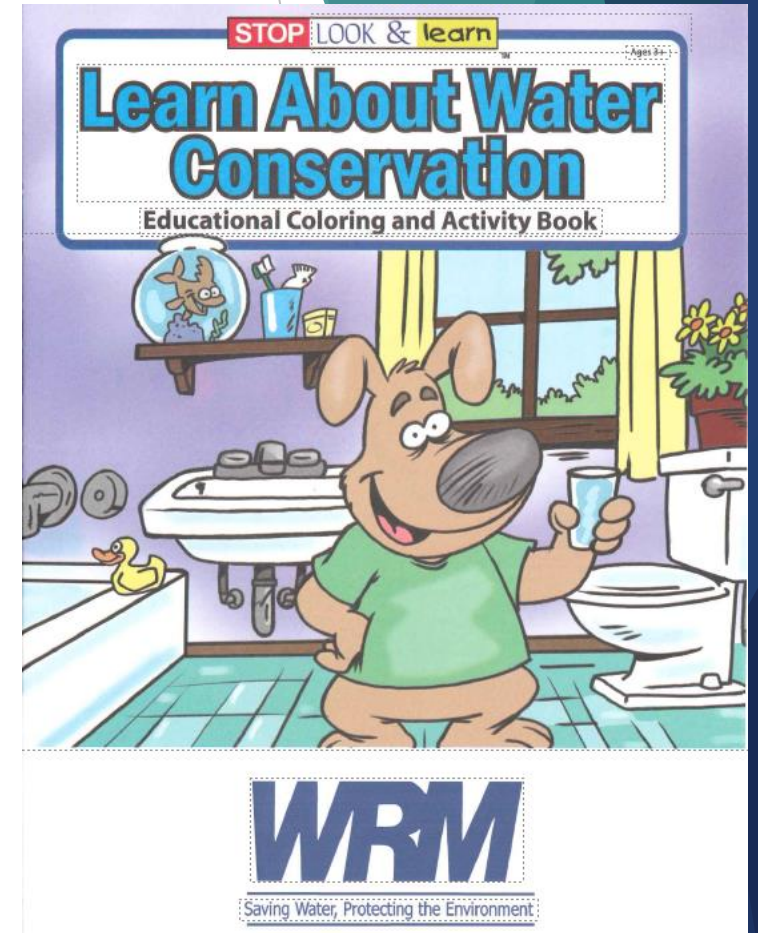
Facility Information

- The Facility only accepts non-hazardous waste for processing and treatment at the Type V Facility.
- All wastes are properly manifested or have a trip ticket.
- All waste materials are stored within enclosed vented tanks or appropriate containers. All tanks are vented and housed within an enclosed building and do not constitute a fire, safety, or health hazard nor do they provide food or harborage for animals and vectors.
- All processing occurs completely within the enclosed Type V building. The building is equipped with an air scrubber to minimize odor.
- The facility has not had a spill or odor complaint in the past 9 years.

NCTCG Regional Conformance

Goal No. 1: Support Materials Management Education and Training

- ▶ A key aspect of WRM's business is the recycling of materials extracted from wastes processed at our plants. These processes lead to products for renewable energy, composted material used for landscaping, and ingredients for animal feed and animal health compounds. In 2025, we recycled over 260,000,000 gallons of wastewater and aim to exceed this performance year over year. This is in line with our Mission Statement of "Saving Water and Protecting the Environment."
- ▶ Public outreach and awareness is branded using digital marketing tools including company website (e.g. articles, flyers, white papers, blogs, updates to online directories for SEO) and google search engine marketing. We also created a Children's coloring book for public outreach that targets youth organizations.



NCTCG Regional Conformance

Goal No. 2: Promote Creation and Expansion of Waste Management Programs

- ▶ We are actively working with smaller haulers in rural areas to set up permitted temporary storage permits throughout Texas, which gives these haulers the ability to store liquid waste on their facilities. In turn we are contracted to haul and dispose of liquid waste from those rural locations at our processing plants. This program incentive allows the smaller haulers to pump more waste in their markets while reducing truck emissions during frequent turns. This also provides an incentive to prevent illegal dumping throughout these rural areas.

Goal No 3. Measure Regional Waste Reduction Efforts

- ▶ This permit amendment will help reduce liquid disposal at landfills as liquid waste processing will be handled at the Type V Facility. The liquids captured from the dewatering activities will be recycled and in turn, source separated solids sent to the landfills will be much dryer and easier to manage. Based on the Solid Waste Management Plan, there are currently 6 Type V facilities in the region. With the increase in regional population growth, our Type V facility is expanding its operational treatment capabilities to handled more waste volume while maintaining our recycling goals and initiatives.

NCTCG Regional Conformance

Goal No. 4. Support and Encourage Innovative Technologies for Other Waste

- ▶ We have deployed the use of screw presses at all our facilities to create a dryer cake from the separated and dewatered waste. We are installing a new Dissolved Air Flotation system at the facility to remove solids from the water and clarify the wastewater prior to end of pipe recycling. Approximately 1.5% to 2% of all the grease trap waste processed and disposed is reclaimed rendered and sold as bio-fuel (also known as brown oil). Approximately 80% of all liquid waste is processed onsite and recycled to a regulated POTW.

Goal No. 5. Promote Public and Private Sector Partnerships

- ▶ We attend, participate and contribute in programs that support public outreach and awareness. Examples include Water Environment Federation Technical Exhibition and Conference, Restaurant Facility Management Association, Texas Restaurant Association, TCEQ Trade Fair, Colorado Rural Association, and US Composting Council.
- ▶ Private sector relationships range from allowing local haulers to dispose at our facilities, discharging recycling/treated water to POTWs, and disposing dewatered solids to the landfills.

Questions

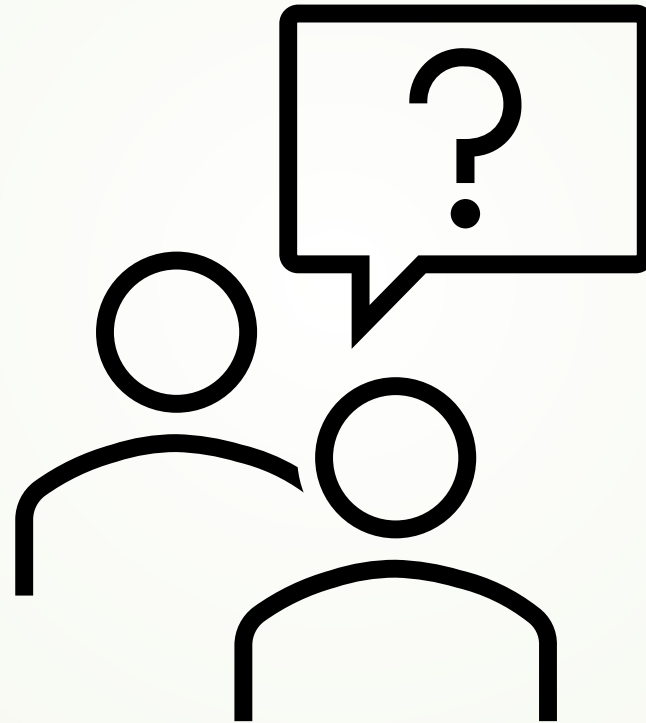
Southwaste Disposal, LLC

Contact Name: Ben Camacho, Director of Compliance

Contact Number: 713-303-9435

Contact Email: bcamacho@wrmco.com

Q&A For Applicant



Action Item

The Subcommittee will discuss the Permit Application for the SouthWaste Dallas Disposal facility, located in Tarrant County, and vote whether to recommend to the Resource Conservation Council (RCC) that the application conforms to the North Central Texas Regional Solid Waste Management Plan.

Next Steps

The Resource Conservation Council will vote to approve the Subcommittee's conformance recommendation for these applicants at their next meeting, scheduled for February 10, 2026 via Microsoft Teams.

A letter stating the RCC's final conformance determination will be submitted to the TCEQ, and a copy will be sent to the applicant.

Next Meeting Date:

To be determined.

Adjournment.

Contact

Caralyn Dawson

Environment and Development Planner II

cdawson@nctcog.org

817-608-2377

Hannah Ordonez

Senior Environment and Development Planner

hordonez@nctcog.org

817-695-9215

Cassidy Campbell

Department of Environment and Development,
Program Manager

ccampbell@nctcog.org

817-608-2368

Connect



Facebook.com/nctcogenv



@nctcogenv



@nctcogenv



youtube.com/user/nctcoged



EandD@nctcog.org



nctcog.org/envir