

# DALLAS DISTRICT PROGRESS

COLLIN CO. | DALLAS CO. | DENTON CO. | ELLIS CO. | KAUFMAN CO. | NAVARRO CO. | ROCKWALL CO.

## WHEN WINTER HITS, TxDOT RESPONDS



**When forecasts predict winter weather,** TxDOT and the Dallas District always answer the call. On January 21, emergency operations got underway in preparation for impacts from a massive winter storm forecast to stretch across several states, including Texas.

Days before the first drops of precipitation fell, more than 500 employees across the Dallas District began working 12-hour shifts around the clock to prepare and treat thousands of lane miles for freezing conditions. As steady rain persisted and temperatures hovered just above freezing, crews strategically applied brine to major routes, bridges, and elevated surfaces.

**As the storm moved in,** conditions quickly became challenging. Rain transitioned to freezing rain and sleet, creating slick and hazardous travel conditions across the district. Throughout this winter weather event, the Dallas District's Emergency Operations Center remained fully activated, district leadership closely monitored weather conditions, traffic flow, and road-



SOURCE: TxDOT

TxDOT photos

**TxDOT crews throughout the Dallas District** weathered many days and hours – around the clock – in order to keep as many main highways and interchanges ice-free, or substantially so, during the recent major winter weather event. The Dallas District, and all districts in Texas, keep us moving all year long!

way impacts and coordinated resources in real time.

**Behind the scenes,** support teams played an equally vital role in the response. Crews worked long hours to ensure materials were mixed, loaded, and replenished so operations could continue without interruption. Maintenance and mechanic teams kept equipment running by performing repairs at all hours to minimize downtime. Their work ensured frontline crews could remain focused on keeping roadways as safe as possible. These efforts highlight just some of the behind-

the-scenes support from personnel districtwide contributing day and night.

**This response was a true team effort** that required coordination, flexibility, and dedication from every corner of the district. From those monitoring conditions in the Emergency Operations Center to crews braving the elements on roadways, TxDOT employees once again demonstrated their commitment to public safety.

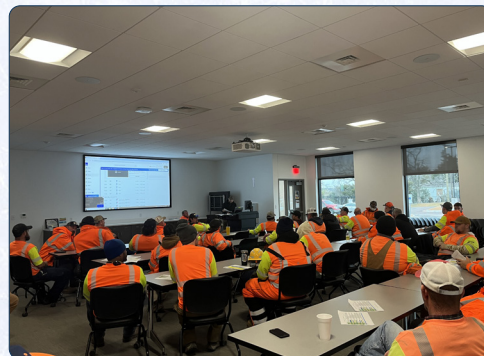
**MORE ON BACK PAGE »**

### CONTINUED FROM COVER STORY



"The Dallas District rose to the occasion during one of the most challenging storms in recent memory," said Director of Maintenance Lane Selman. "Everyone stepped up and did a remarkable job, I'm proud of the work we did, and how we kept traffic moving even during difficult conditions."

**Most Texans sheltered indoors** and much of the district's efforts went unseen. But the crucial work never stopped. TxDOT is deeply grateful to every employee who stepped up, worked long hours, and answered the call to serve. ■



SOURCE: TxDOT  
TxDOT photos

## WINTER TRAVEL TIPS

**Even though the start of 2026 has brought**

some above-average temperatures to North Texas, TxDOT crews remain ready to respond to winter weather events. Here are some travel tips to keep in mind when snow and ice come into the forecast:



**Ultimate safety** is in hands of driver during weather events



**Drive slow,** give full attention to road and surrounding traffic and allow extra travel time



**Bridges and overpasses** will freeze first; use caution on these structures



**Conditions can quickly change** and slick spots can reform even on cleared areas



**Any spot has the potential** to be hazardous due to conditions or the driver behind the wheel



**Our crews and support staff** work 24/7 during weather events



**Not all lanes may be drivable** especially during the storm



**With refreezing,** clearance operations may extend several days following the storm



**Melting ice takes time:** The temperature and the amount of ice or snow on the road determine de-icing material amounts and melting rates. As temperatures drop, the amount of de-icer needed to melt a given quantity of ice increases significantly



**Each storm is different;** we make our plans based on forecasts and information from crews in other areas of the state



**For your safety,** travel is discouraged during snow or ice events. Check local forecasts and be prepared to delay travel plans



**If deciding to risk travel,** be prepared for hazardous driving conditions caused by the weather

SOURCE: TxDOT

TxDOT Public Information Office

**FOR MORE INFORMATION:**

214-320-4480  
dalinfo@txdot.gov  
[www.txdot.gov](http://www.txdot.gov)



Visit <https://www.txdot.gov/about/contact-us/report-an-issue/roadneedsrepair.html> or call 800.452.9292.

Progress report can be downloaded at <https://www.txdot.gov/about/districts/dallas-district/progress-report.html>





JANUARY 2026 LET PROJECTS						
#	CSJ No.	HWY	PROJECT LIMITS	TYPE OF WORK	CONTRACTOR	BID
1	CSJ: 0092-08-021	BI 45G	SS 469 to SH 34	INSTALL RAISED MEDIAN	GARRET SHIELDS INFRASTRUCTURE	\$1.13 M
2	CSJ: 0817-01-035	FM 428	WEST OF FM 2931 TO EAST OF FM 2931	INSTALL TRAFFIC SIGNAL AND LEFT TURN LANES	QUALITY EXCAVATION, LLC	\$1.54 M
ESTIMATED TOTAL						\$2.67 M

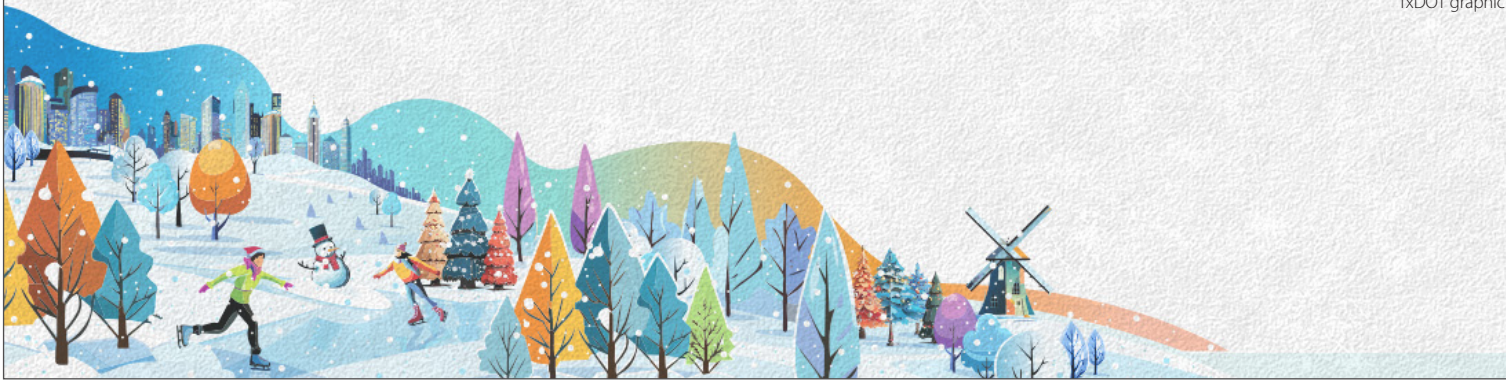
SOURCE: TxDOT

FEBRUARY 2026 SCHEDULED LET PROJECTS • (SUBJECT TO CHANGE)					
#	CSJ No.	HWY	PROJECT LIMITS	TYPE OF WORK	EST. COST (M)
1	CSJ: 0009-03-051	SH 66	NONA STREET TO EAST CITY LIMITS	LANDSCAPE DEVELOPMENT	\$0.83 M
2	CSJ: 0048-03-099	US 77	US 287 TO I-35E	REHABILITATE EXISTING ROADWAY	\$6.14 M
3	CSJ: 0918-18-142	NW CR 4340	NW CR 4340 AT FROST BRANCH	BRIDGE REPLACEMENT	\$1.54 M
4	CSJ: 1015-01-024	FM 549	SH 205 TO SH 276	WIDEN FROM 2 LANE RURAL TO 4 LANE URBAN SECTION	\$34.64 M
5	CSJ: 2374-03-100	I-20	BONNIE VIEW ROAD TO I-635	BRIDGE MAINTENANCE	\$9.33 M
6	CSJ: 2921-01-010	SS 394	I-35E TO FM 877	CONSTRUCT NEW ROAD	\$25.33 M
*	CSJ: 0918-47-445	EDGEFIELD	NE ZANG TO SW ZANG	TRAFFIC SIGNAL IMPROVEMENTS	\$2.85 M
*	CSJ: 0918-00-433	VARIOUS	VARIOUS LOCATIONS TO PAVEMENT MARKINGS IN FY 2026	PREVENTIVE MAINTENANCE	\$1.68 M
ESTIMATED TOTAL					\$82.34 M

\* Unmapped. SOURCE: TxDOT

COMPLETED CONSTRUCTION PROJECTS • (FROM JANUARY 1-31, 2026)						
#	CSJ No.	HWY	PROJECT LIMITS	TYPE OF WORK	EST. COST (M)	COMPLETED DATE
1	CSJ: 0092-07-062	SH 356	SH 183 TO ELM FORK TRINITY RIVER	REHABILITATE EXISTING ROAD	\$7.6 M	1/20/2026
2	CSJ: 0918-24-278	JUPITER RD.	AT RENNER RD.	TRAFFIC SIGNAL IMPROVEMENT	\$1.8 M	1/14/2026
3	CSJ: 0918-47-360	W SPINE RD.	ON EAGLE FORD & SHADY RIDGE CAMP LOOPS	RECONSTRUCT EXISTING ROADWAY	\$3.7 M	1/20/2026
4	CSJ: 1016-02-023	FM 1138	FM 1138 AT CR 541	INTERSECTION IMPROVEMENT	\$1.4 M	1/22/2026
5	CSJ: 3000-01-028	SS 408	SL 12 TO I-20	REHABILITATE EXISTING ROAD	\$16.2 M	1/21/2026
*	CSJ: 0918-11-110	VARIOUS	DALLAS DISTRICT- WIDE ADA PROJECT FY 24	BYCYCLE AND PEDESTRIAN IMPROVEMENTS	\$3.0 M	1/15/2026
ESTIMATED TOTAL					\$33.7 M	

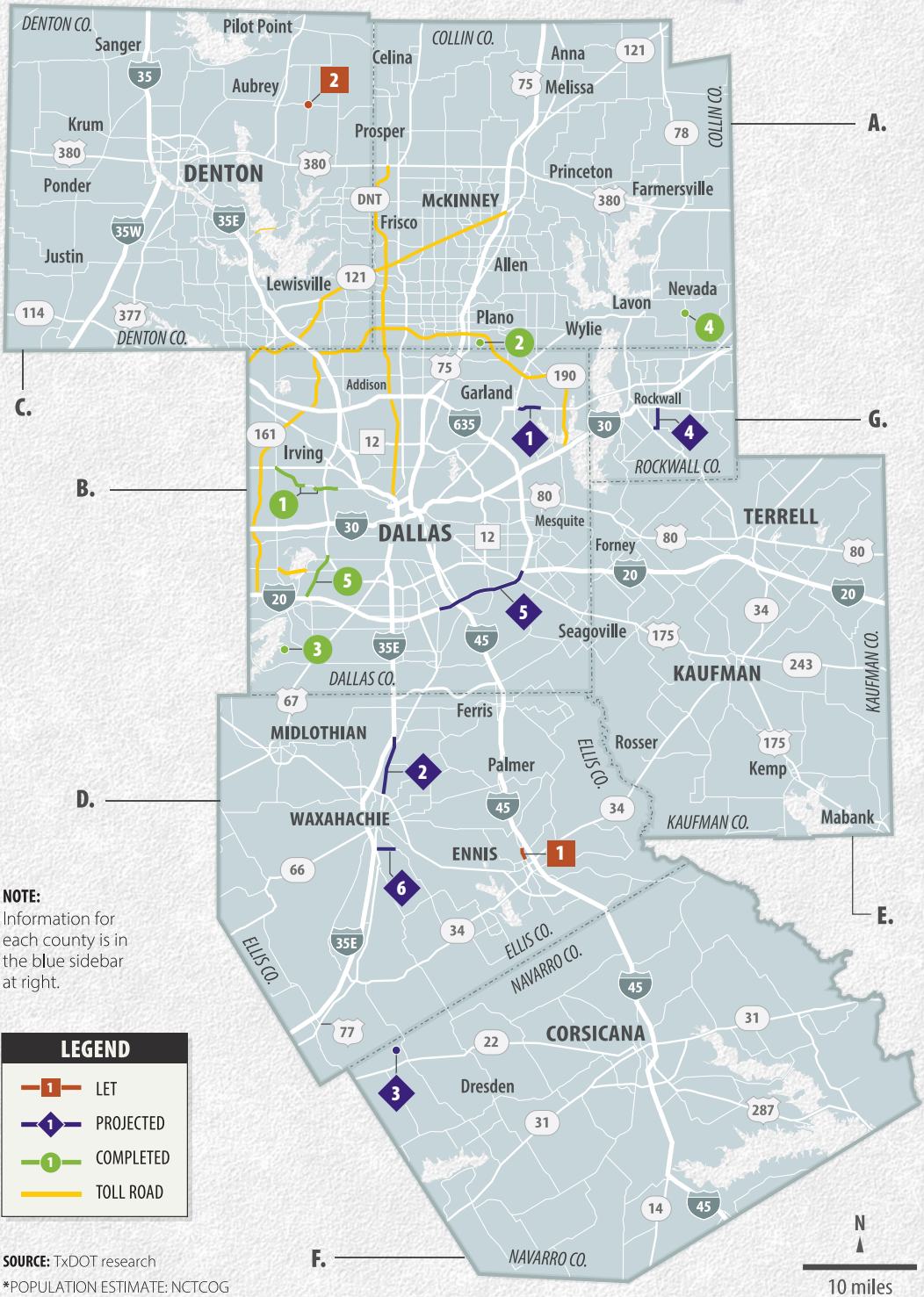
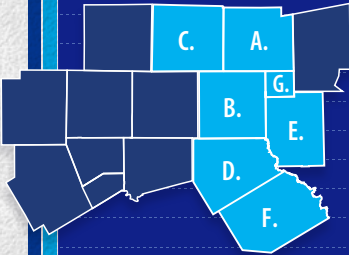
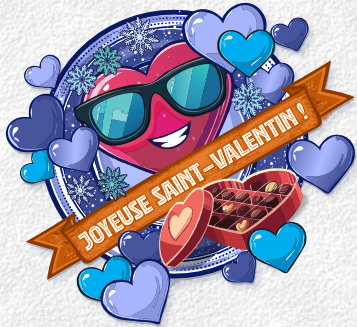
\* Unmapped. SOURCE: TxDOT



TxDOT graphic

## DALLAS DISTRICT PROJECTS MAP

COLORS AND NUMBERED BOXES CORRESPOND WITH THE CHARTS ON PAGE 2 AND SHOW PROJECTS THAT HAVE LET IN **JANUARY 2026**, ARE PROJECTED TO LET IN **FEBRUARY 2026**, OR HAVE RECENTLY BEEN **COMPLETED**.



### 2025 DALLAS DISTRICT ESTIMATE TOTALS

VEHICLE REGISTRATION | 4,272,434  
\*POPULATION ESTIMATE | 5,739,222  
LANE MILES | 11,456

#### A. | COLLIN COUNTY

VEHICLE REGISTRATION: 892,924  
\*POPULATION ESTIMATE: 1,305,366  
LANE MILES: 1,578

#### B. | DALLAS COUNTY

VEHICLE REGISTRATION: 2,101,685  
\*POPULATION ESTIMATE: 2,762,279  
LANE MILES: 3,563

#### C. | DENTON COUNTY

VEHICLE REGISTRATION: 763,677  
\*POPULATION ESTIMATE: 1,068,355  
LANE MILES: 1,822

#### D. | ELLIS COUNTY

VEHICLE REGISTRATION: 201,810  
\*POPULATION ESTIMATE: 239,923  
LANE MILES: 1,627

#### E. | KAUFMAN COUNTY

VEHICLE REGISTRATION: 151,162  
\*POPULATION ESTIMATE: 171,808  
LANE MILES: 1,225

#### F. | NAVARRO COUNTY

VEHICLE REGISTRATION: 54,161  
\*POPULATION ESTIMATE: 55,991  
LANE MILES: 1,276

#### G. | ROCKWALL COUNTY

VEHICLE REGISTRATION: 107,015  
\*POPULATION ESTIMATE: 135,500  
LANE MILES: 365