

Texas Local Technical Assistance Program (TxLTAP)



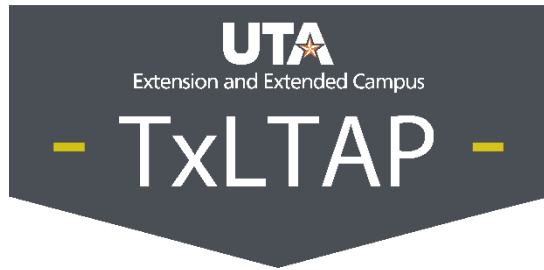
History of Texas Local Technical Assistance Program

In 1982 the [Federal Highway Administration](#) (FHWA) launched an initiative with the goal of improving local roadways, known as the Local Technical Assistance Program (LTAP). The nationwide program is modeled after the successful agriculture extension service and is supported through funds provided by [FHWA](#) and the [Texas Department of Transportation](#) (TxDOT). The Texas Local Technical Assistance Program (TxLTAP) is managed by The University of Texas at Arlington Extension and Extended Campus' [Public Works Institute](#).

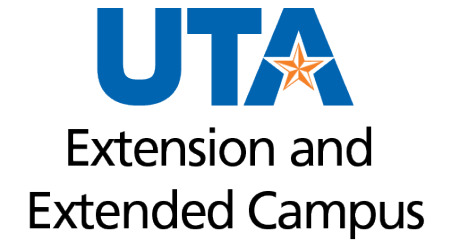
Through training geared to local government circumstances, customized technical assistance, advice provided at events, and a library of resources, TxLTAP provides relevant and impactful information focused on road and bridge/culvert maintenance, the use of traffic control devices and other techniques to promote traffic safety.

TxLTAP Goals

- Make available and provide educational and technical assistance to all 254 Texas counties and 1,225 Texas municipalities
- Deliver training courses at your site
- Provide on-site technical assistance consultations for unique and challenging infrastructure and workforce development issues
- Provide resources via the TxLTAP website



Our Team



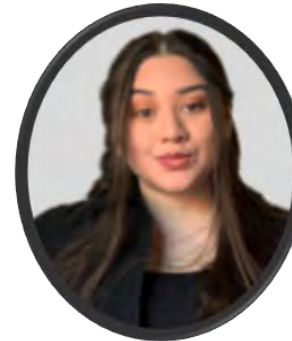
Dawn Hinton
PWI Director



Anna Hollis
PWI Assistant
Director



Genevieve Toups
TxLTAP Program
Manager



Anaili Duarte
TxLTAP Program
Coordinator



Matthew Rico
TxLTAP Administrative
Assistant

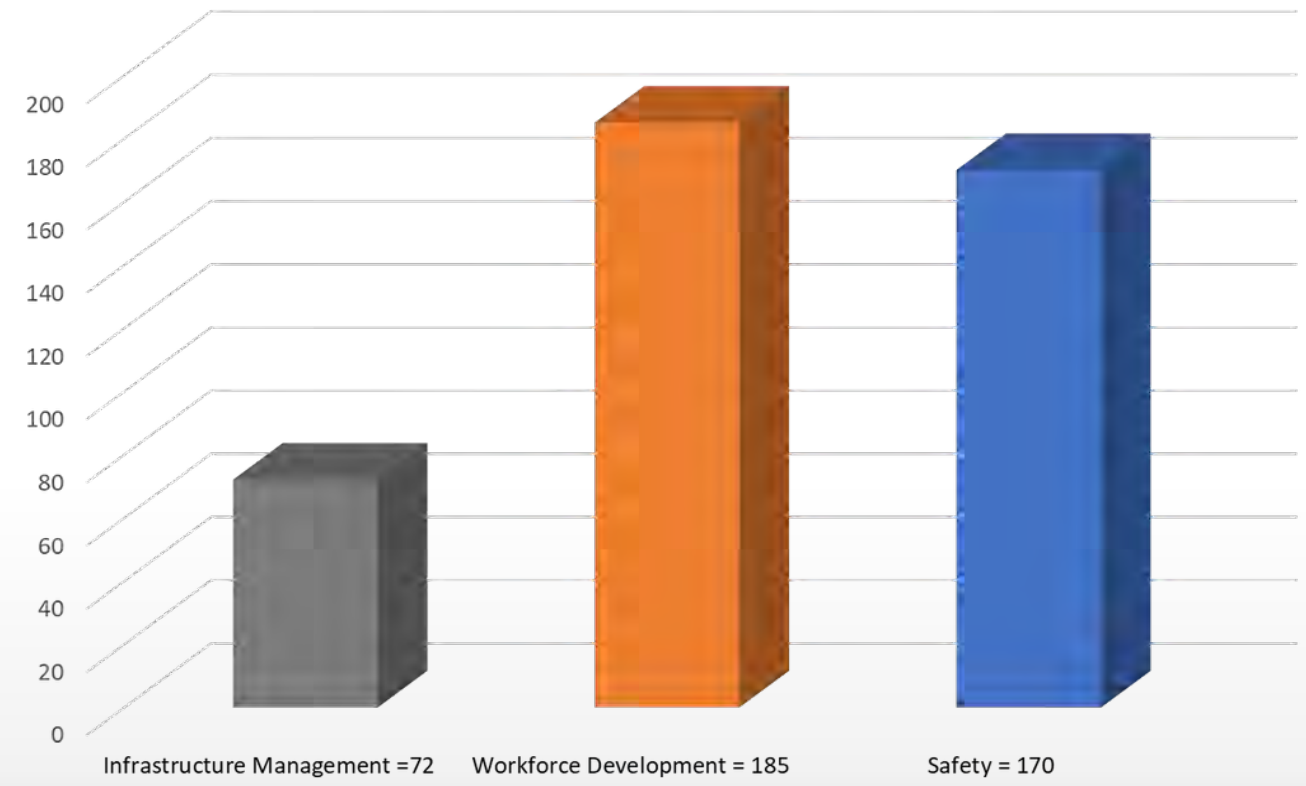
Our Team



FY25

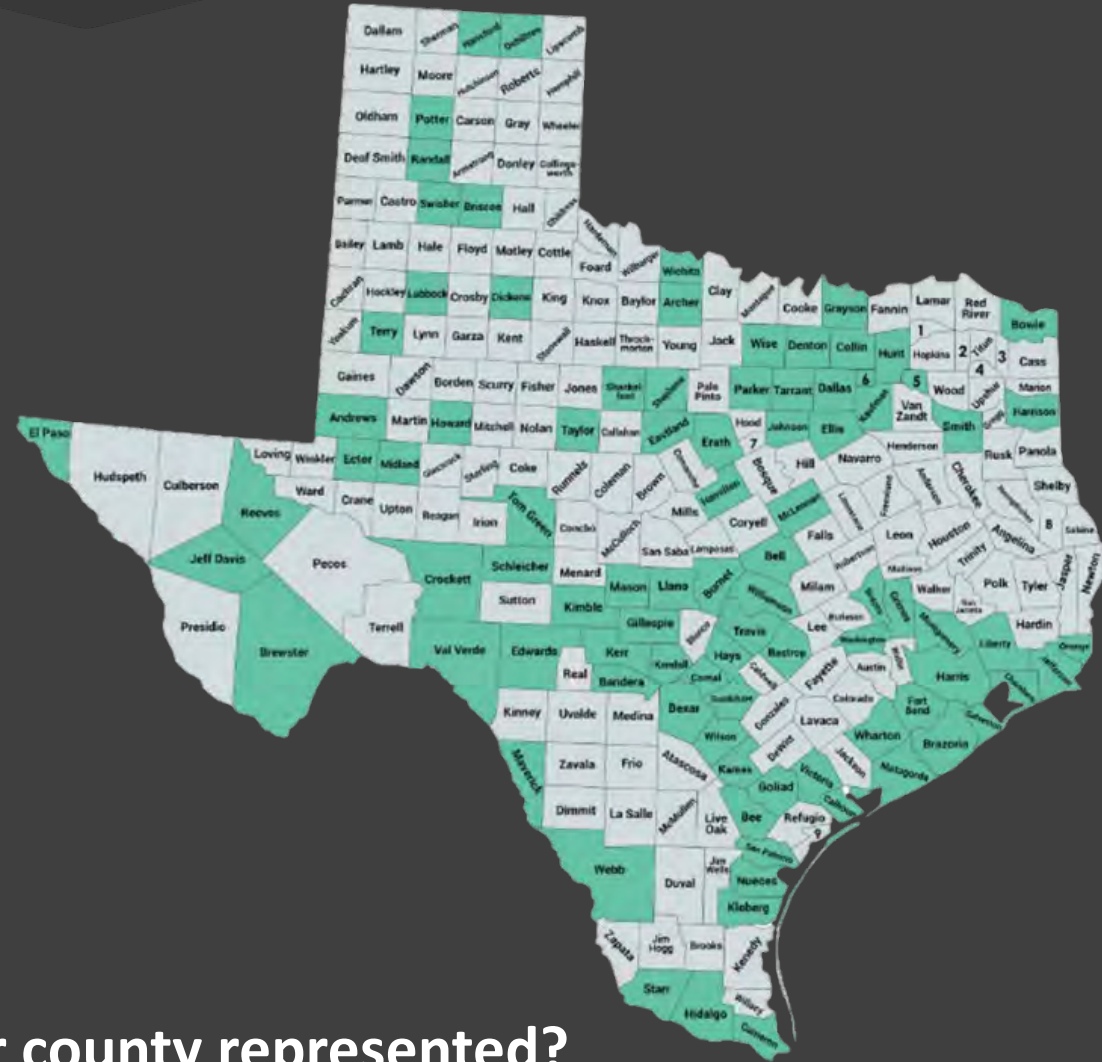
- **455** Courses Delivered (a **24%** increase from FY24)
- **6,347** Participants Trained (a **14%** increase from FY24)
- Technical Assistance
- Training
- Conferences

FY25 TxLTAP Training Courses Delivered



Regional Training has expanded our outreach

- TxLTAP partners with generous cities and counties across the state to offer regional trainings.
- This allows smaller municipalities the opportunity to take advantage of TxLTAP's grant-funded program.

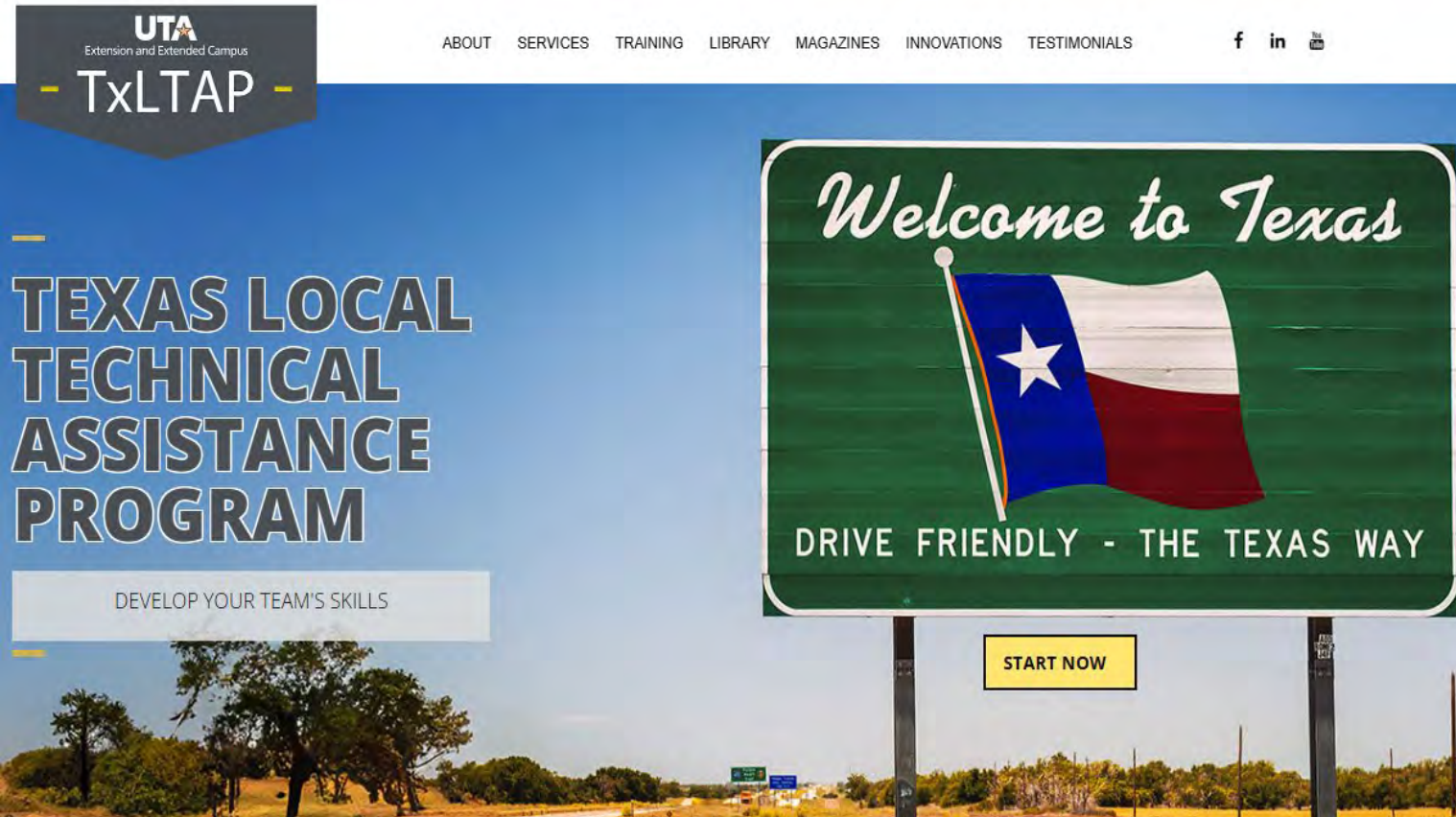


1. Delta
2. Franklin
3. Morris
4. Camp
5. Rains
6. Rockwall
7. Somervell
8. San Augustine
9. Aransas

Is your county represented?

TxLTAP Website

Rebuilt and ready to explore!



- View new resources!
- Browse our interactive catalog
- Discover testimonials from cities and counties TxLTAP has teamed up with

TxLTAP.org

TxLTAP Website – Sign Up

Services

Sign Up to Receive Our Newsletters and the Better Roads Safer Roads Quarterly Magazine

Stay up to date with the latest news from TxLTAP!

To receive our monthly newsletter by email or regular mail, please complete the following. You can also log in and update your preferences at any time.



IF YOU ALREADY HAVE AN ACCOUNT, LOG IN BELOW:

Email Address

Password

Submit

TxLTAP Website - Library

Does your City or County need resources? Our Library has them!

- Equipment available for checkout from our Lending Library
- Workforce Development guides and Job Descriptions
- Heavy Equipment Inspection Checklists
- TxLTAP Quarterly Magazines
- TxLTAP Newsletters
- Technical Briefing papers
- Texas and National Resources and News

TxLTAP Forklift Equipment Inspection Checklist

Date		Section/Location	
Equipment ID Number		Mileage/Hours	
Inspection Category	Inspection Items	✓	X (X)
EXTERIOR CHECKS			
Tires / Wheels	Condition and pressure (if applicable)		
Hoses	Leaks		
Mast, Chain and Stops	Visual check for serviceability and lube		
Forks	Top Retention Clip Pin and Heel cond.		
Leaks	Hydraulic, Oil and Battery		
Load Backrest Extension	Attached and Serviceable		
Overhead Guard	Attached and Serviceable		
Finger Guards	Attached and Serviceable		
Safety Labels	Refer to operators manual for location		
INTERIOR CHECKS			
Battery	Water / Electrolyte Level and Charge		
Battery Restraint	Latched		
Hydraulic Tank	Fluid levels		
Accelerator Linkage	Operates smoothly		
Brake Fluid	Check level		
OPERATORS COMPARTMENT			
Operators Manual	In case		
Capacity Plate	Attached and information correct		
Fire Extinguisher	Attached and inspection date		
First Aid Kit	Attached and items present		
Seat Belt	Good condition and operates properly		
CONTROLS (Turn on) NOISES MUST BE INVESTIGATED IMMEDIATELY			
Parking Brake	Operates correctly		
Service Brake	Operates smoothly and correctly		
Steering System	Operates smoothly and correctly		
Drive Control	Forward & reverse operates correctly		
Lift and Lowering Controls	Operates smoothly and correctly		
Tilt Controls	Operates smoothly and correctly		
Attachment Controls	Operates smoothly and correctly		
Horn	Operational		
Light	Operational		
Strobe Light	Operational		
Backup Alarm	Operational		
GAUGES			
Hour Meter	Operational		
Battery Chare Indicator	Operational		
Instrument Monitors	Operational		
ENGINE COMPARTMENT (if applicable)			
Oil	Level and check for contaminants		
Fluids	Levels		
General	No issues		
MISCELLANEOUS			
Propane Tank Mounting	Secure and in place		
Comments			
<small>✓ = Condition safe to operate X = Discrepancy found (X) = Discrepancy required</small>			
Operator's Printed Name and Signature		Supervisor's Signature of Release	

YouTube Resources

Go to [TxLTAP – YouTube](#) and type in TxLTAP in Search to see the following TxLTAP Videos!

- **Work Zone Safety** (8:51) 4,600 views
- **Asphalt Profiler** (19:05) 7,800+ views
- **Asphalt Distributor** (14:58) 11,000+ views
- **Street Sweeper** (22:22) 26,000+ views
- **Inspection – Motor Grader** (12:55) 4,300+ views
- **Flat Bottom Ditch – Motor Grader** (18:37) 135,000+ views
- **Dump Truck – Pre-Operation Inspection** (6:47) 49,000+ views
- **Loading a Dump Truck from a Stockpile** (15:25) 77,000+ views
- **Loading a Dump Truck with a Gradall** (14:37) 18,000+ views
- **Cutting a V Ditch – Motor Grader** (11:04) 150,000+ views
- **Safety Tips When Loading Heavy Equipment** (10:06) 5,700+ views
- **Official Crane Hand Signals** (19:35) 3,000+ views
- **County Road Maintenance and Inspection** (11:52) 1,300+ views

of views as of April 2026

Technical Briefing Papers and Other Resources

There are numerous links to technical briefing papers, manuals, Texas resources and national resources within the TxLTAP Library.


Technical Briefing Papers (categories)

- Bicycles and Pedestrians
- Bridges
- Drainage
- Maintenance and Construction
- Pavement Preservation Checklists
- Roadway Design
- Roadway Safety
- Signs & Pavement Markings
- Texas Manual on Uniform Traffic Control Devices
- Transportation Planning
- Work Zone
- Worker Safety

TxLTAP Lending Library

Library

Equipment Checkout

 [Equipment Check-Out Form.pdf](#)

The TxLTAP equipment lending library has over 15 items available to Texas cities and counties for checkout. Please see the detail information below and use the checkout form to request equipment.

Your Name:

Phone Number:

Email Address:

- Digital Ball Bank Indicator
- Handheld Retroreflector
- TC-400 Portable Radar Speed Sign
- MetroCount RoadPod® VT MetroCount
- AMS Dual Mass Dynamic Cone Penetrometer
- 3M Sayflite 50 Fall Protection Kit - 2 USER
- Carson Microflip Pocket Microscope
- BW Technologies Gas Alert Max XT II Detector
- Black Cat II Plus Radar Kit
- Jamar Tech TDC Ultra Traffic Data Collector
- Delta MTG Marking Thickness Gauge
- RAC GEO II GPS DMI
- ICOM IC-A120 - VHF Air Band Transceiver - Vehicle Mount
- Kenwood KSC-35S Rapid Charger
- Traffic Worker Alert System
- Radiodetection RD8200 Locator
- Radiodetection TX-5 Signal Transmitter
- Radiodetection TX-10 Signal Transmitter
- Schonstedt Maggie Magnetic Locator
- Infrared Digital Thermometer
- QuestTemp® QT-44 Heat Stress Monitor Kit

You can find these items on our website

There are over 20 pieces of equipment. You can also email or call TxLTAP for assistance.

Utility Line Locator Kit



The Radiodetection RD8200 Locator

is a high-performance precision utility locator engineered for accuracy in demanding environments. Equipped with onboard GPS, data logging, five antenna arrays, and TruDepth™ technology, the RD8200G delivers accurate depth readings, target confirmation, and real-time mapping. Designed for utilities, construction, telecom, and SUE professionals, it supports advanced signal identification across congested utility corridors and challenging electromagnetic environments.



The Radiodetection TX-5 Signal Transmitter

is a versatile, mid-power signal transmitter designed for everyday cable and pipe locating. It is well suited for routine tracing tasks across utility, construction, municipal, and industrial environments.



The Radiodetection TX-10 Signal Transmitter

is a professional-grade signal transmitter designed for advanced utility locating across complex underground networks. With high output power, multi-frequency capability, and built-in diagnostic tools like Fault Find and Current Direction (CD), the TX-10 enhances tracing accuracy and helps field crews quickly verify the correct target line—even in congested utility corridors.

Utility Line Locator Kit



The **Schonstedt Maggie Magnetic Locator**

delivers the best of both worlds: the precision of digital technology and the intuitive performance of analog magnetic locators. Designed for utility professionals, surveyors, and infrastructure maintenance crews, the Maggie offers highly sensitive detection of deeply buried iron and steel with both audio and bar graph output for confident target verification in the field.

Heat Kit



The QT-44 Heat Stress Monitor Kit

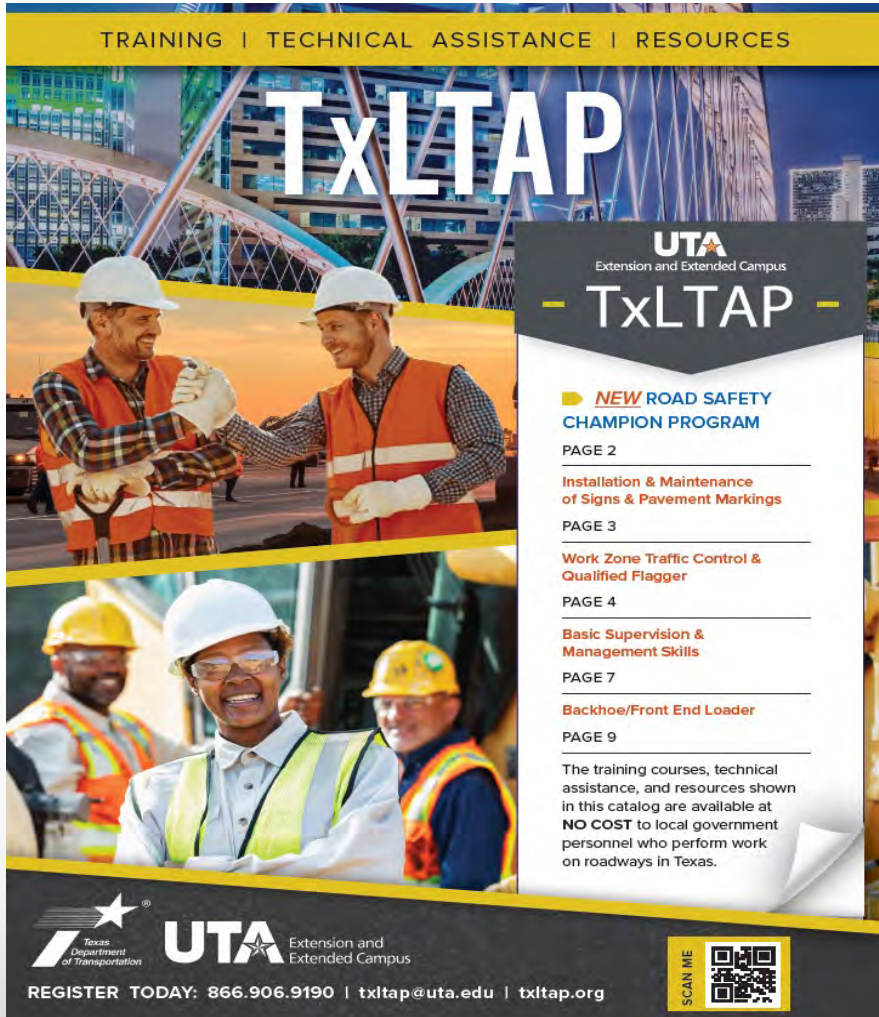
offers high quality heat stress monitoring without the hassle of wet-bulb maintenance. This model measures/calculates the dry bulb, wet bulb, and globe temperatures along with WBGT indoors, WBGT outdoors, relative humidity and Heat Index/Humidex. A real time clock provides accurate reporting with time stamping. Kit includes Standard Accessories, (1) Sensor Bar Assembly w/ Calculated Wet Bulb using Humidity Sensor, and 2-inch Style Globe Sensor



Infrared Digital Thermometer

Get accurate, non-contact temperature readings in seconds with the Infrared Digital Thermometer. Engineered for precision and ease of use, this tool is ideal for a wide range of applications, including construction, HVAC, automotive, and electrical inspections. Measures temperatures from -76° F to 932° F (-60° C to 500° C)

TxLTAP Course Offerings



TRAINING | TECHNICAL ASSISTANCE | RESOURCES

TxLTAP

UTA
Extension and Extended Campus


- TxLTAP -

- ▶ **NEW ROAD SAFETY CHAMPION PROGRAM**
PAGE 2
- Installation & Maintenance of Signs & Pavement Markings**
PAGE 3
- Work Zone Traffic Control & Qualified Flagger**
PAGE 4
- Basic Supervision & Management Skills**
PAGE 7
- Backhoe/Front End Loader**
PAGE 9

The training courses, technical assistance, and resources shown in this catalog are available at **NO COST** to local government personnel who perform work on roadways in Texas.

REGISTER TODAY: 866.906.9190 | txltap@uta.edu | txltap.org

SCAN ME



- Infrastructure
- Work Zone
- Safety
- Workforce development
- Heavy Equipment
- Road Safety Champion Program

New courses for FY26

- LTP406: Advanced Management Skills
- LTP407: DISC Styles in Leadership
- LTP 701 Traffic Incident Management for Secondary Responders

Infrastructure

- **LTP 515 Installation and Maintenance of Signs and Pavement Markings - 16 hours**
- **LTP 611 Storm Drainage Pipe & Precast Box Culvert Installation Best Practices - 8 hours**
- **UTL 101 Subsurface Utility Locating & Marking Workshop - 8 Hours**
- **UTL 102 Advanced Utility Locator Training - 16 Hours**



Work Zone

- **LTP 100 Work Zone Safety: Temporary Traffic Control - 4 hours**
- **LTP 100 Work Zone Safety: Temporary Traffic Control - 4 hours**
- **LTP 520 Work Zone Traffic Control/Qualified Flagger - 16 hours (Available in Spanish)**
- **LTP 421 Traffic Control Supervisor - 16 hours**
- **LTP 401 Work Zone Construction Site Safety - 12 hours**

Safety

- **LTPLN 201 Tree Trimming Safety Awareness - 8 hours**
- **LTP7405 Fall Hazard Awareness for the Construction Industry - 8 hours**
- **LTP7300 Understanding OSHA's Permit-Required Confined Space Standard - 8 hours**
- **LTP7410 Managing Excavation and Trenching Operations - 8 hours**



Workforce Development

- **LTP 400 Managing Conflict in the Workplace - 8 hours**
- **LTP 404 Basic Supervision and Management Skills - 16 hours**
- **LTP 405 Developing Employee Performance Plans & Conducting Employee Performance Evaluations - 8 hours**
- **LTP 406 Advanced Management Skills - 24 hours**
- **LTP 801 Entry Level Driver's Training, Behind-the-Wheel, Train-the-Trainer - 8 hours**
- **LTP 802 Entry Level Driver's Training, Theory Assessment, Knowledge - 8 hours**

Heavy Equipment

- **LTP 110 Equipment Preventative Maintenance - 8 hours**
- **LTP 155 Backhoe/Front End Loader - 32 hours**
- **LTP 179 Bucket Truck - 8 hours**
- **LTP 192 Skid Steer - 8 hours**



Road Safety Champion Program



Core Module + One Pathway = RSCP Certificate

CORE MODULES

- ✓ Introduction to Road Safety
- ✓ Understanding Human Factors
- ✓ Introduction to Traffic Safety Culture
- ✓ Overview of the MUTCD
- ✓ Intersection of Transportation with Public Health and Law Enforcement
- ✓ Reading the Roadway
- ✓ Safety Analysis Process

MAINTENANCE & CONSTRUCTION PATHWAY

- Maintaining a Safer Roadway
- Work Zones
- Worker Safety
- Traffic Incident Management
- Take Action Now - Maintaining Safety
- Work Zone Construction Site Safety (OSHA 10)
- Flagger Certification

PLANNING & ENGINEERING PATHWAY

- Countermeasures for Road Safety
- Work Zones
- Overview of Local Road Safety
- Overview of Data and Tools for Safety
- Crash Reporting
- Systemic Safety Project Selection Tool

Offering 3 classes through TxLTAP

- LTP100: Basic Work Zone Safety (In-person)
- LTP300: Flagger Certification (In-person)
- LTP401: Work Zone Construction Site Safety (OSHA 10) (Webcast)
- TIM: NHI (Online)

Can't make it to every session?

Classes are open to Texas City and County employees, even if you're not pursuing full certification

Road Safety Champion Program



We had over 400 program participants that now have safety-focused skills for managing, maintaining, and designing local roads.

We received strong support and buy-in for the RSCP from leaders, who not only were a part of the program, but also opened their doors to us for in-person trainings.



Town of Addison
Director of Public Works & Engineering



Kendall County
Road and Bridge Safety Coordinator



Do you have a unique problem you don't know the solution for? TxLTAP's roadway and engineering experts are available to help! They can customize trainings, advise on engineering problems, and more. All at no cost to your city or county!

Technical Assistance Consultation Services

The TxLTAP Technical Assistance Program is designed to:

- Provide economically feasible recommendations to unique or challenging roadway issues via:
 - **Telephone assistance** - Call, text, send photos and videos
 - **Teams meetings** – when multiple stakeholders are involved
 - **On-site visitation** – Can visit your location and ride the roads with you for a day, then meet with you on a second day to discuss solutions
 - Research of prior similar issues

Technical Assistance Consultation Services Cont'd

- Examples of challenges that TxLTAP has assisted include (but not limited to):
 - Drainage issues
 - Pavement failures
 - Signage and marking issues
 - Right of Way issues
 - Subdivision issues

Technical Assistance

Technical Assistance On-Site Visits Provide

- Phone visit to discuss history and magnitude of the issue
- On-site inspection of the problem
- TxLTAP Subject Matter Expert (SME) will document the problem and take photographs of the problem for reference
- Discuss ideas and options that local representatives have considered
- Attempt to reach a consensus to a viable economically feasible solution
- SME will prepare a comprehensive report of the visit and will send to the TxLTAP manager who will forward to the parties requesting the assistance

Technical Assistance



Do you have roads that look like this? If so, we can help! We have several consultants on call with numerous years of real-world experience who can help you overcome challenges.

Our consultants have experience in:

- Road maintenance (asphalt, cement, chip seal and all-weather)
- Drainage issues
- Equipment maintenance
- Signage and roadway markings
- Safety (roadway, equipment operation, office, all aspects)
- Utility locating
- Work Zone Planning
- Contract administration
- Construction and maintenance inspection
- Project Management planning and implementation

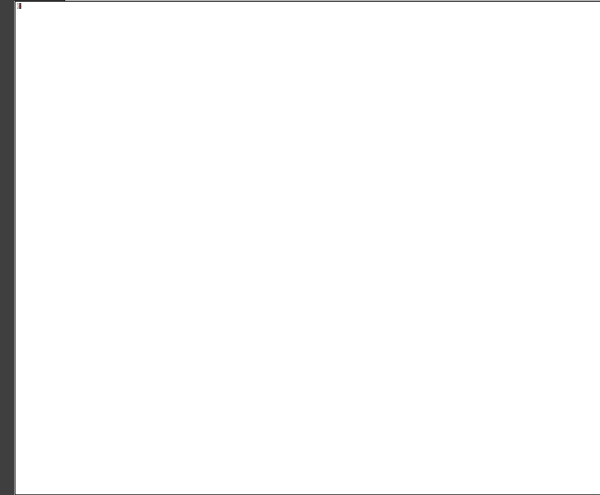
Where you can find us



TxLTAP attended, exhibited, and presented at over 25 conferences in FY25

We also teach short courses at conferences for certifications

At your City or County!



Thank you!

Genevieve Toups

TxLTAP Program Manager

[Email: genevieve.toups@uta.edu](mailto:genevieve.toups@uta.edu)

Phone: 817-272-9617

txltap@uta.edu

