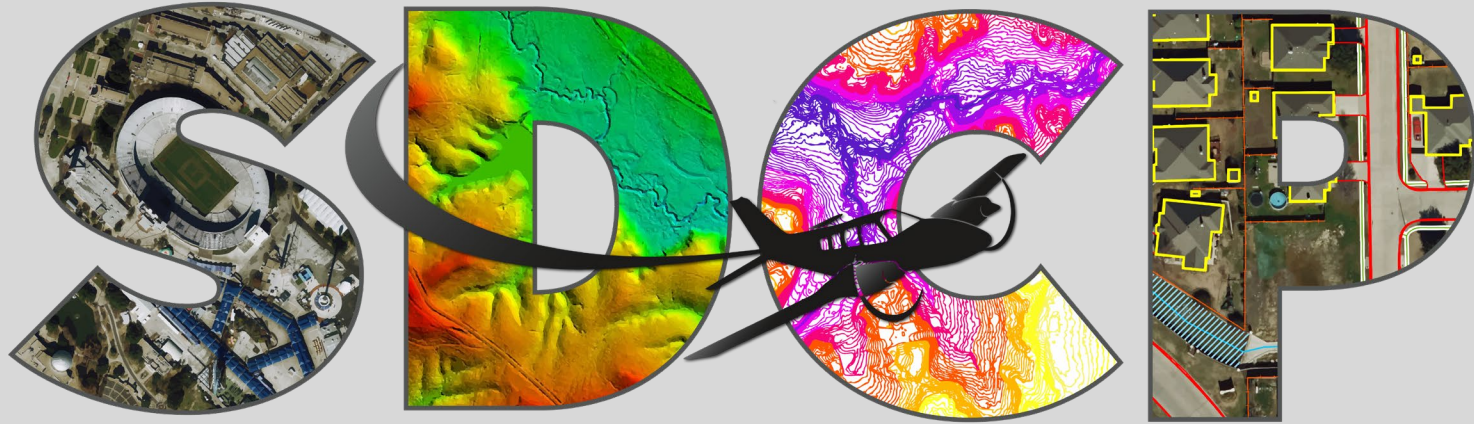




STATE OF THE REGION

Welcome

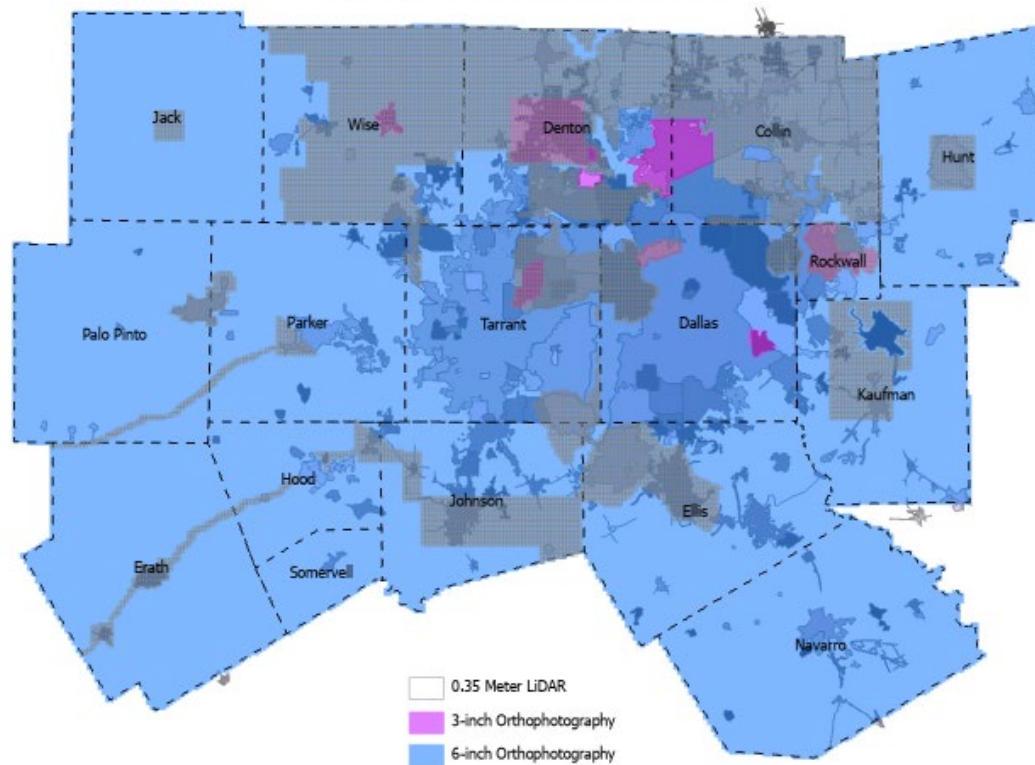
- Nice to have everyone here at NCTCOG!
- Thank you to the Transportation Department for letting use the Council Room
- Bathrooms & Snack Room
- Trying a hybrid meeting through Teams for the first time.
- Agenda Change
- Wifi: NCTCOG Guest Secured, Password: rangers!



SPATIAL DATA COOPERATIVE PROGRAM

<https://www.nctcog.org/regional-data/spatial-data-cooperative-program-sdcp>

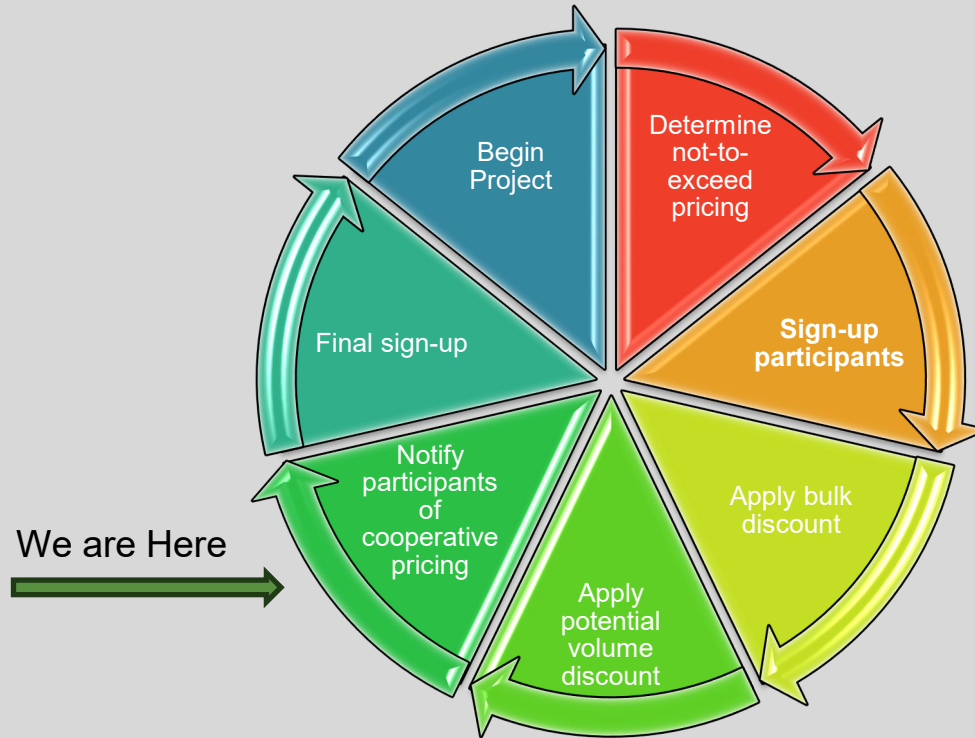
2025 Orthophotography and LiDAR Projects



A green rectangular graphic element with a thin white border, positioned at the top center of the slide.

2026 SDCP Projects

The Annual Cooperative Process



JOIN THE COOPERATIVE!

https://resources.nctcog.org/ris/gis/cost_estimates.asp

Data Use Cases

Pedestrian Studies

(uses orthophotography & planimetrics)



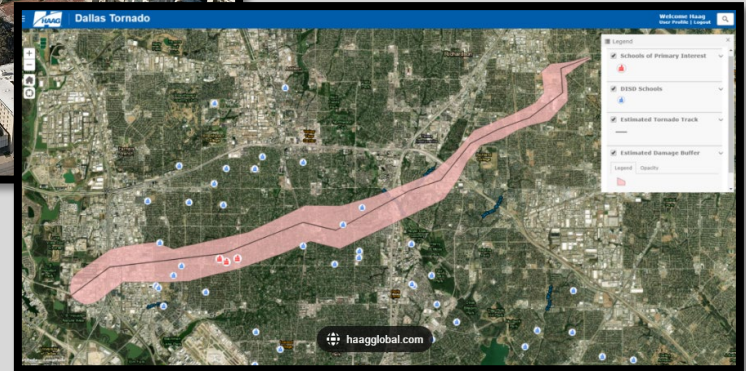
Digital Twin

(uses true orthophotography & LiDAR)



Disaster Modeling

(uses orthophotography & planimetrics)





Transportation Update

- Bond-funded transportation project tracking
- Network analyses using MTP networks
- New TIP project viewer launching soon
(raps.dfwmaps.com)
- Mobility 2050 adoption anticipated next month
- Linear referencing experimentation

Questions?

Shelley Broyles

RIS Department – RIS Program Manager

sbroyles@nctcog.org