

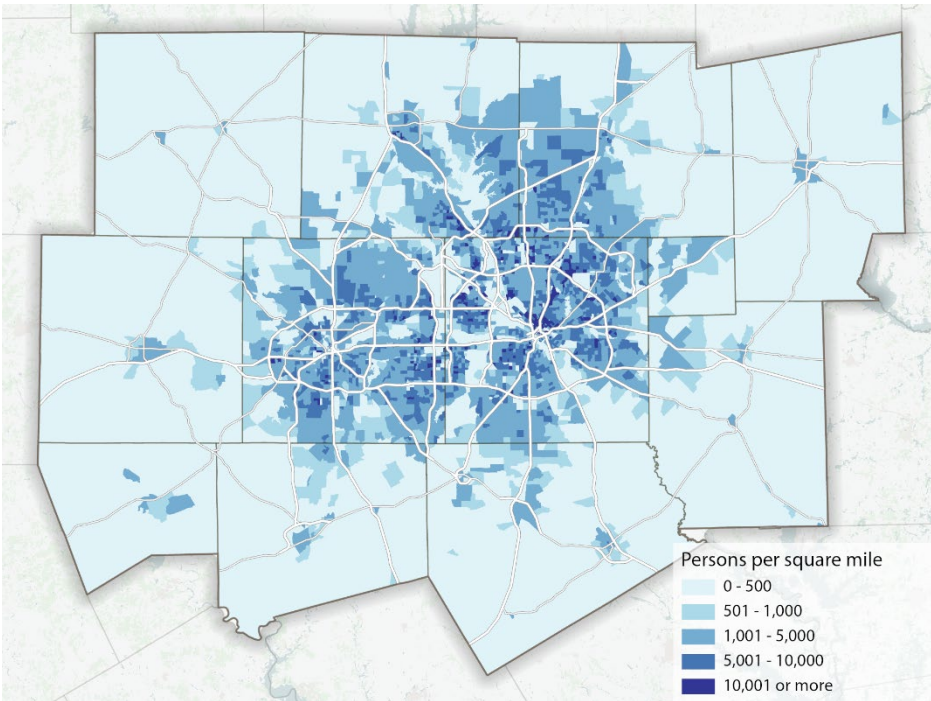


# TEXPRESS LANES:

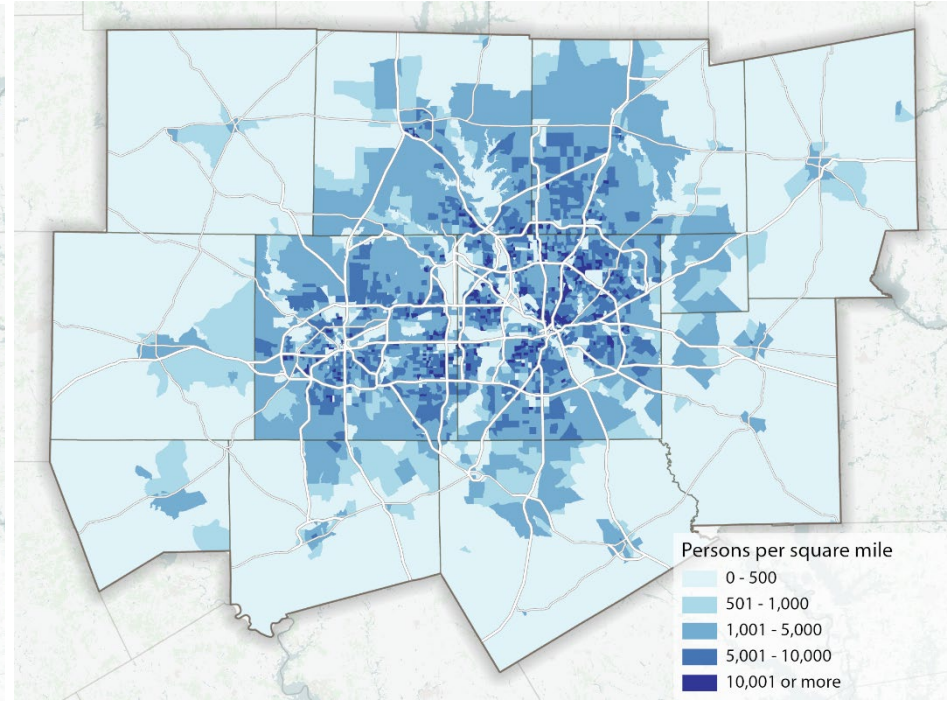
A REGIONAL OVERVIEW

April 2023

# REGIONAL GROWTH



2023



2045

Source: NCTCOG 2045 Demographic Forecast

The Dallas-Fort Worth area has more than 8 million people living in the 16-county region and continues to add approximately 1 million new residents per decade.

## ESTIMATED REGIONAL GROWTH

2023

2045

POPULATION

8,153,519

11,411,548

EMPLOYMENT

5,724,039

8,111,082

VEHICLE MILES OF TRAVEL

226,506,567

325,516,238

HOURLY CAPACITY (MILES)

44,583,406

54,157,935

VEHICLE HOURS SPENT IN DELAY

1,812,065

4,101,174

INCREASE IN TRAVEL TIME DUE TO CONGESTION

37.28%

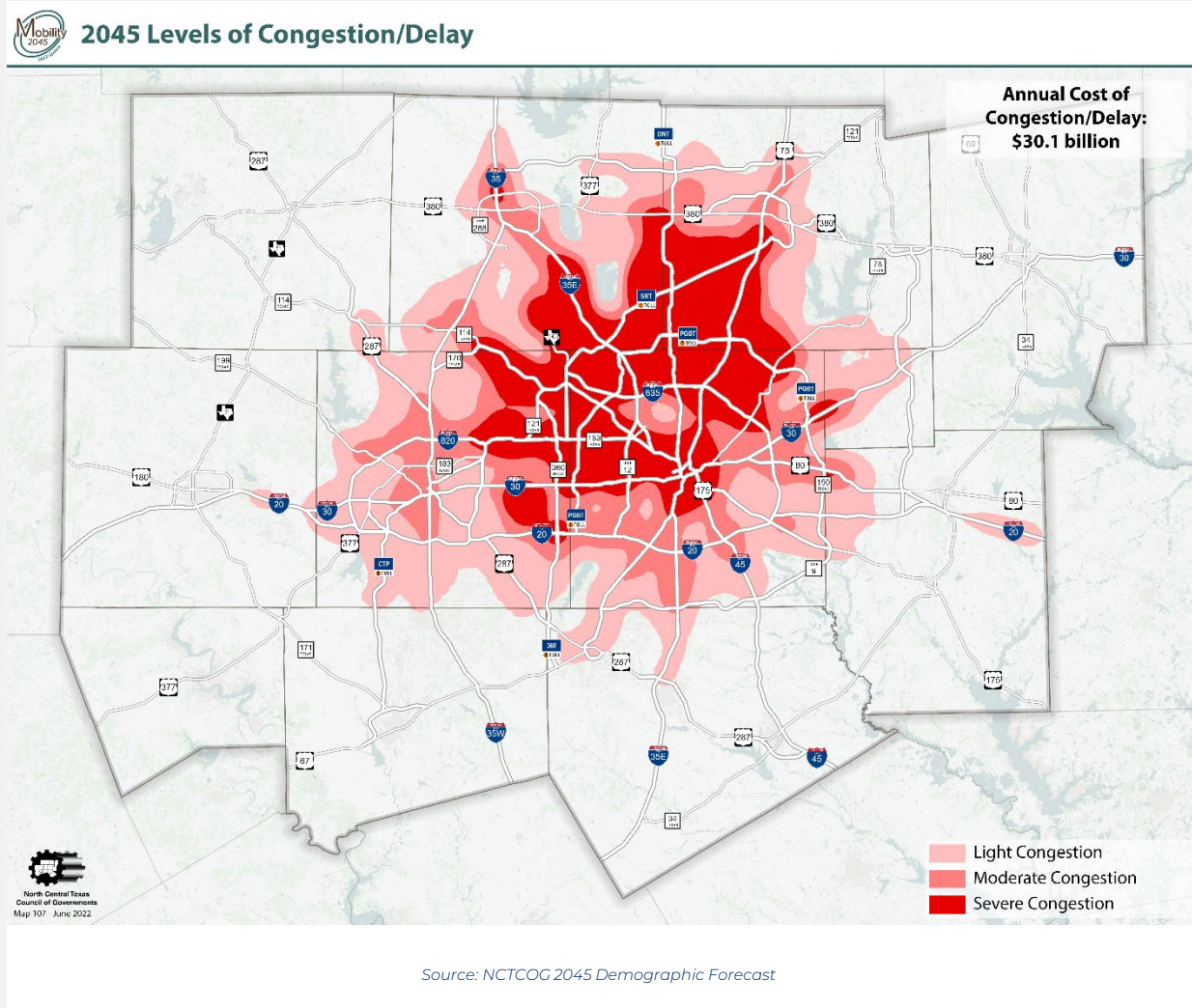
59.42%%

ANNUAL COST OF CONGESTION (BILLIONS)

\$13.3

\$30.1

# CONGESTION LEVELS



Current transportation funding is not keeping pace with the need to maintain and provide capacity improvements for the growing population, increasing congestion throughout the region.

# FUNDING CHALLENGES

**State fuel  
taxes have  
not  
increased  
since 1991.**

**The gas tax has lost  
much of its  
purchasing power  
and cannot  
sufficiently fund our  
roadways.**

**Federal fuel  
taxes have  
not increased  
since 1993.**

**Increased  
construction  
costs**

**More  
fuel-efficient  
vehicles**



# EXPLORING ALTERNATIVES



**TEXpress  
Lanes  
expedite  
projects**

**Create  
extra  
capacity**

**Provide  
reliable  
travel times**

**Pay for their  
maintenance  
over time**

**Provide an  
option to  
drive on  
rebuilt, non-  
tolled lanes**

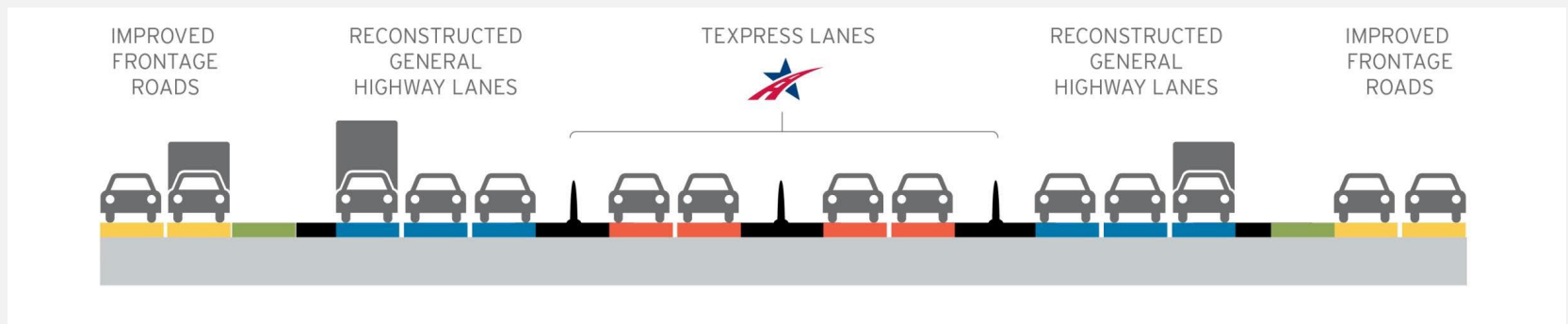
# WHAT ARE TEXPRESS LANES?

TEXpress Lanes are unique toll lanes that are built within an existing highway. They add additional capacity to the highway to accommodate more traffic to relieve congestion.



# HOW DO TEXPRESS LANES WORK?

Pricing on TEXpress Lanes is adjusted based upon the average speed and number of drivers on the TEXpress Lanes. Drivers are notified of the price they will pay on the toll pricing signs prior to entering any segment of the TEXpress Lanes.





# NTE TEXPRESS USAGE FACTS

**3 million**

**TOLL TAGS**

About 3 million toll tags seen on Managed Lanes in the past year out of 5.3 million active tags in North Texas.

**1 in 5**

**TRIPS ON TEXPRESS**

The average TollTag user chooses the TEXpress Lanes for 1 in every 5 trips.

**\$5-15**

**BILL/MONTH**

Most drivers who choose the TEXpress Lanes have a bill between \$5-\$15 per month.



# TEXPRESS LANES

COMPARED TO



# TOLL ROADS

**TEXpress Lanes add capacity alongside non-tolled lanes and use a pricing model with rates that fluctuate depending on traffic.**

**NTTA toll roads charge standard, non-fluctuating toll fees.**

TEXPRESSLANES

# NORTH TEXAS TEXPRESS LANES SYSTEM



# OPERATING PROJECTS

	MILES	INVESTMENT	PUBLIC FUNDING	OPEN SINCE
NTE TEXPRESS	13.3	\$2.1 BILLION	28%	OCTOBER 2014
LBJ TEXPRESS	13.3	\$2.6 BILLION	18%	SEPTEMBER 2015
NTE 35W TEXPRESS	10.2	\$1.4 BILLION	5%	JULY 2018





TEXPRESSLANES

# CHOOSING TEXPRESS

**Drivers can always choose to drive the existing non-tolled lanes or choose TEXpress Lanes.**

# CHOOSING TEXPRESS

TEXpress Lanes are designed for drivers who want a reliable and time-saving trip to reach many destinations.

**WORK**



**HOME**



**SPORTS**



**AIRPORT**



Drivers can make the best choice for them based on their own needs each time they drive on a roadway with TEXpress Lanes.



**25+ million** different  
vehicles have used the  
**LBJ, NTE & NTE 35W**  
TEXpress Lanes to date



**Over 8 million**  
people live in  
**Dallas-Fort Worth**

# TEXpress Lanes

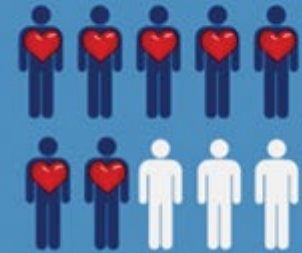
are for everyone

**Each managed lane trip is  
8 miles on average**

**85% of drivers** who use managed  
lanes take less than 2 trips each  
week, only when they need it



**Over 90% of  
managed lane trips  
are under \$10**



**73% view TEXpress  
Lanes favorably**

Source: LBJ TEXpress and NTE TEXpress Lanes

# BENEFITS



**REDUCES  
CONGESTION**

---



**ECONOMIC  
DEVELOPMENT**

---



**AIR  
QUALITY**

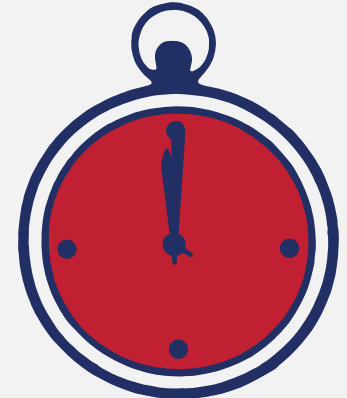
---



# REDUCES CONGESTION

TEXpress or Tolled Managed Lanes are designed to keep traffic moving above 50 mph. They allow for expanded capacity without reducing efficiency.

- With traffic demand built up in the past 10 years, traffic conditions and reliability in the General Purpose Lanes (GPL) have inevitably deteriorated
- 35% Peak Hour Travel Time Saved on Managed Lanes (ML)



GPL Travel Time:  
60 min



ML Travel Time:  
39 min

# ECONOMIC DEVELOPMENT

Improved transportation  
corridors bring:

- ▶ Economic development
- ▶ Increased property values
- ▶ Additional tax revenues

# AIR QUALITY

Less stop-and-go traffic conditions  
help reduce emissions, helping  
improve air quality.





It's all about drivers who want  
a more reliable commute.

TEXpress Lanes are a needed  
choice for North Texas  
residents.

**TEXPRESSLANES.COM**

