

MOBILITY2050

*The Metropolitan Transportation Plan
for North Central Texas*

NCTCOG Public Meeting
July 14, 2025



Long-Range Metropolitan Transportation Plan

NCTCOG is federally required to maintain a performance-based, multimodal transportation plan that guides the spending of federal investments and serves as a blueprint for the region's transportation network. The plan includes policies, programs, and projects that aim to

#ConnectNorthTexas



Must adopt plan within 4 years



20-year horizon at time of plan adoption



Must be financially constrained



Consistency with Transportation Improvement Program and other documents

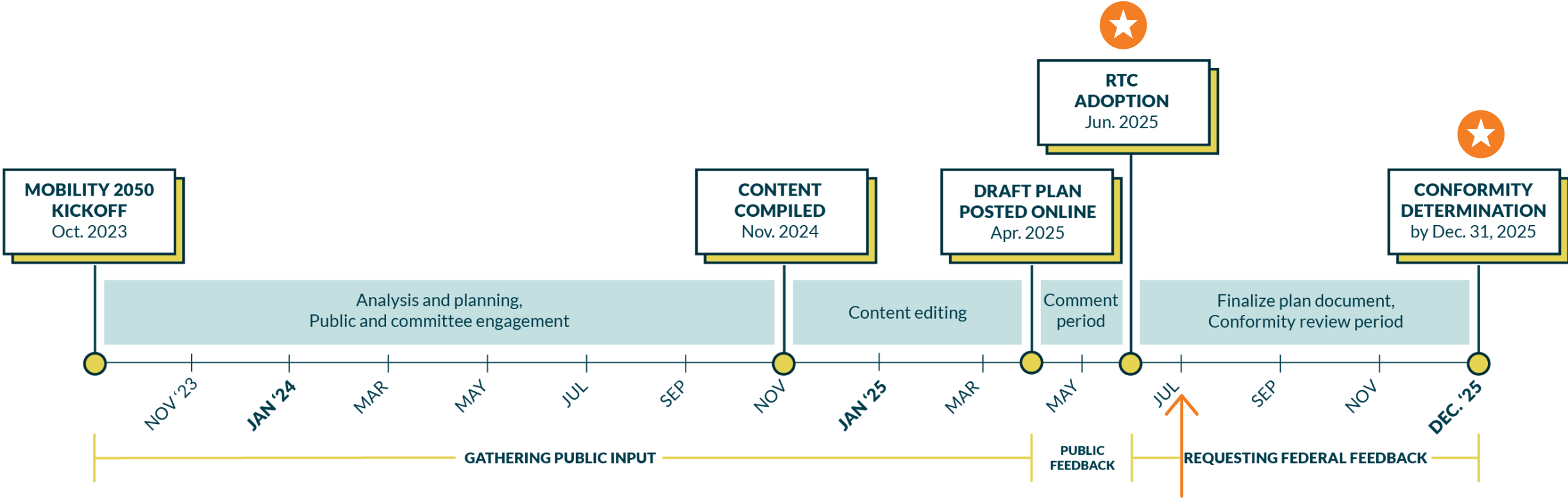


Public Involvement



Must conform with air quality standards

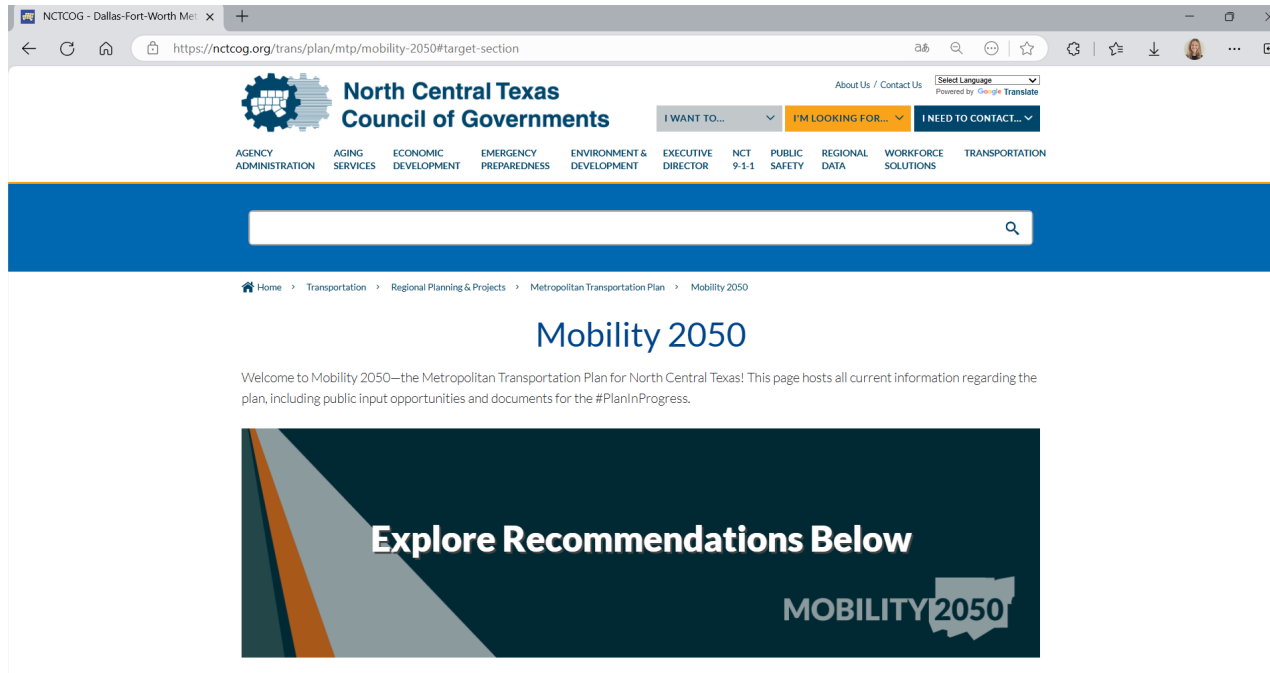
Plan Development Timeline



- RTC adopted the plan on June 12, 2025
- Final plan posted online
- Awaiting conformity determination

Plan Available Online

www.nctcog.org/PlanInProgress



- Plan chapters and appendices
- Project listings
- Maps
- Programs and policies
- RTC Resolution

Major Mobility Plan Components



Financial Plan

	Category	Amount
Maintain Existing System	Infrastructure Maintenance ¹	\$29.8
	Management & Operations	25.7
	Strategic Policy Initiatives ²	6.4
Strategic Infrastructure Investment	Rail & Bus	57.9
	Freeways/Tollways, Managed Lanes, and Arterials	97.5
	Total, Actual \$, Billions	\$217.3 B

Values may not sum due to independent rounding

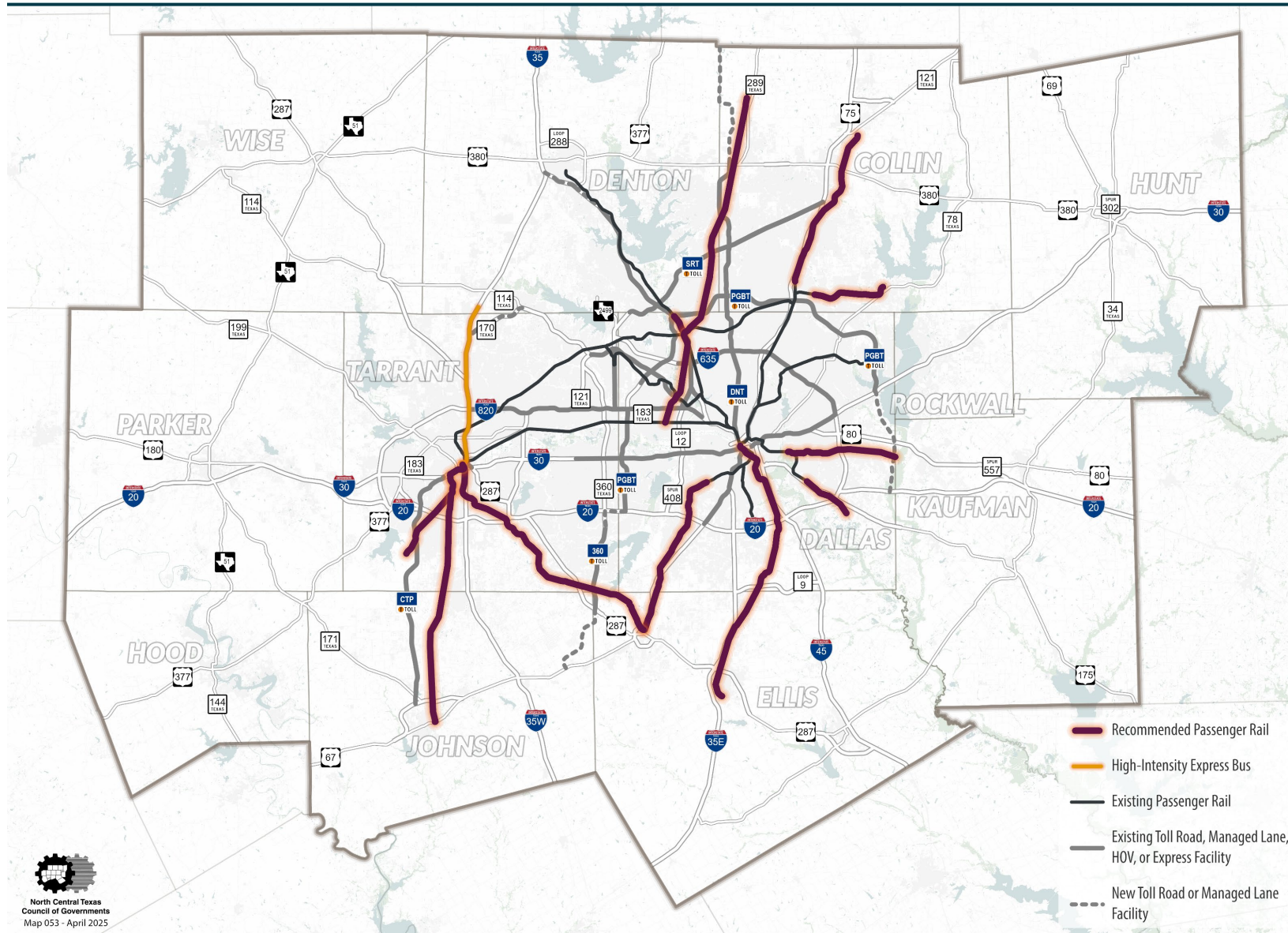
Innovative Funding Solutions

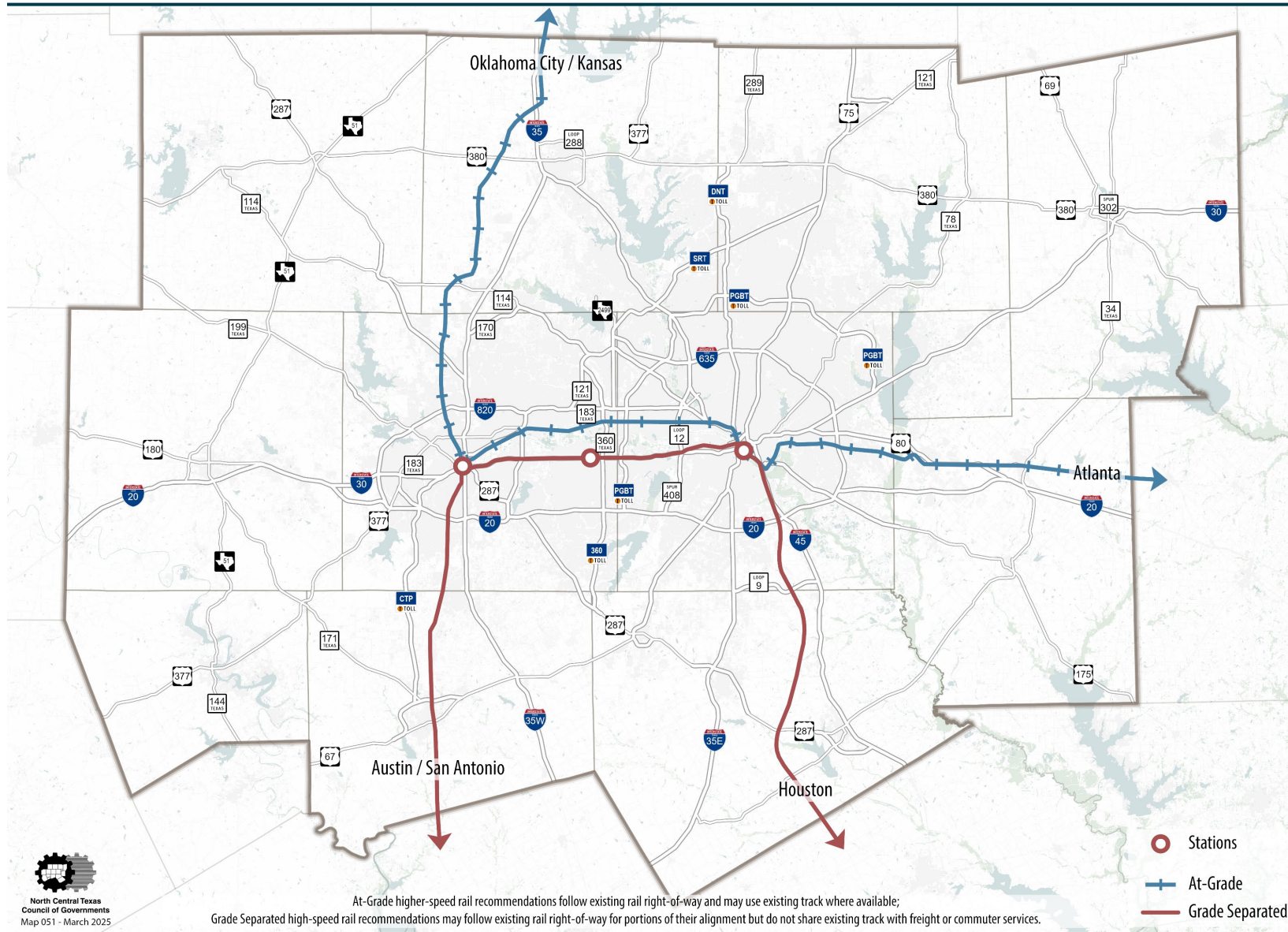
\$217.3 Billion Planned, But Still a Gap

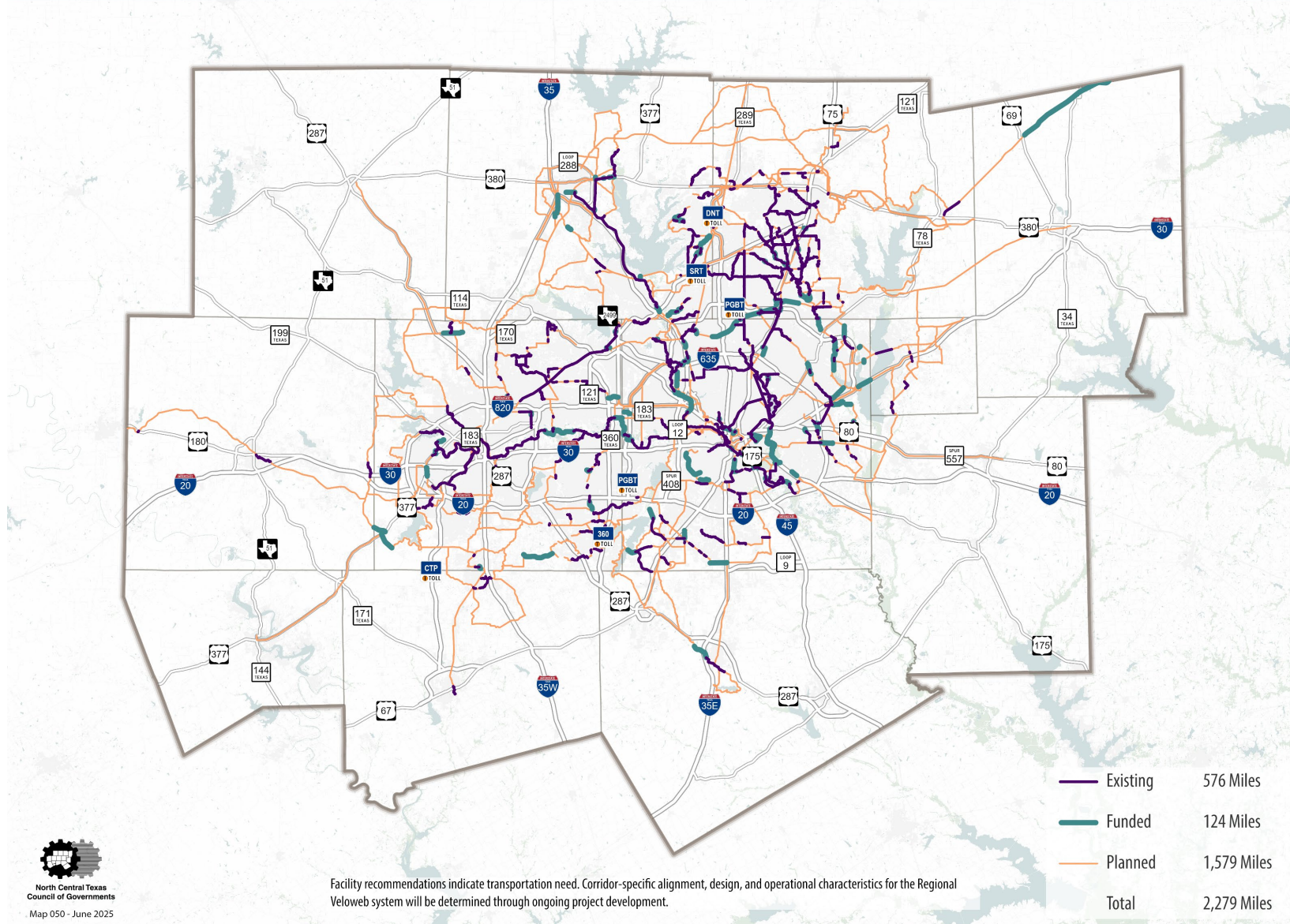
Even with new revenue, funding shortfalls considering transportation need remain through 2050 due to outdated funding sources and limited support for non-roadway investments.

Strategies

- **Pursue New Revenue Sources:** Leverage state funds, public-private partnerships, and value capture tools.
- **Support Transit Expansion:** Explore regional funding options and promote investment across all modes.
- **Adapt to Fuel Tax Decline:** Monitor policy changes and alternatives like mileage-based or electric vehicle fees.
- **Use Flexible Financial Planning:** Regularly update revenue assumptions and apply innovative financing tools.









Public Input Received

January 2024 through June 2025

Source	Count
Limited Time Survey Participants	4,897
Map Your Experience	678
Official Public Comment Form Participants	7
Emails and Letters	42

Integrating Public Input

5 Main Concerns Identified:

- Rail and transit planning
- Sustainable development and land use
- Traffic and roadway congestion
- Planning and funding
- Safety

Impact on Planning Process:

- Early public involvement guided staff focus during recommendation development
- Ensured MTP goals aligned with public needs and priorities
- Reports shared with the Regional Transportation Council and staff

Transit 2.0 & Mobility 2050



Plan for Growth

Prioritize strategic, cost-effective transit expansion to support 12 million people by 2050, especially outside current transit authority boundaries.



Align Policy & Governance

Coordinate governance and policies to support unified regional transit service while addressing safety, competitiveness, and long-term funding stability.



Collaborate & Innovate

Mobility 2050 supports mobility as a service, emerging technologies, and collaboration between public and private sectors.

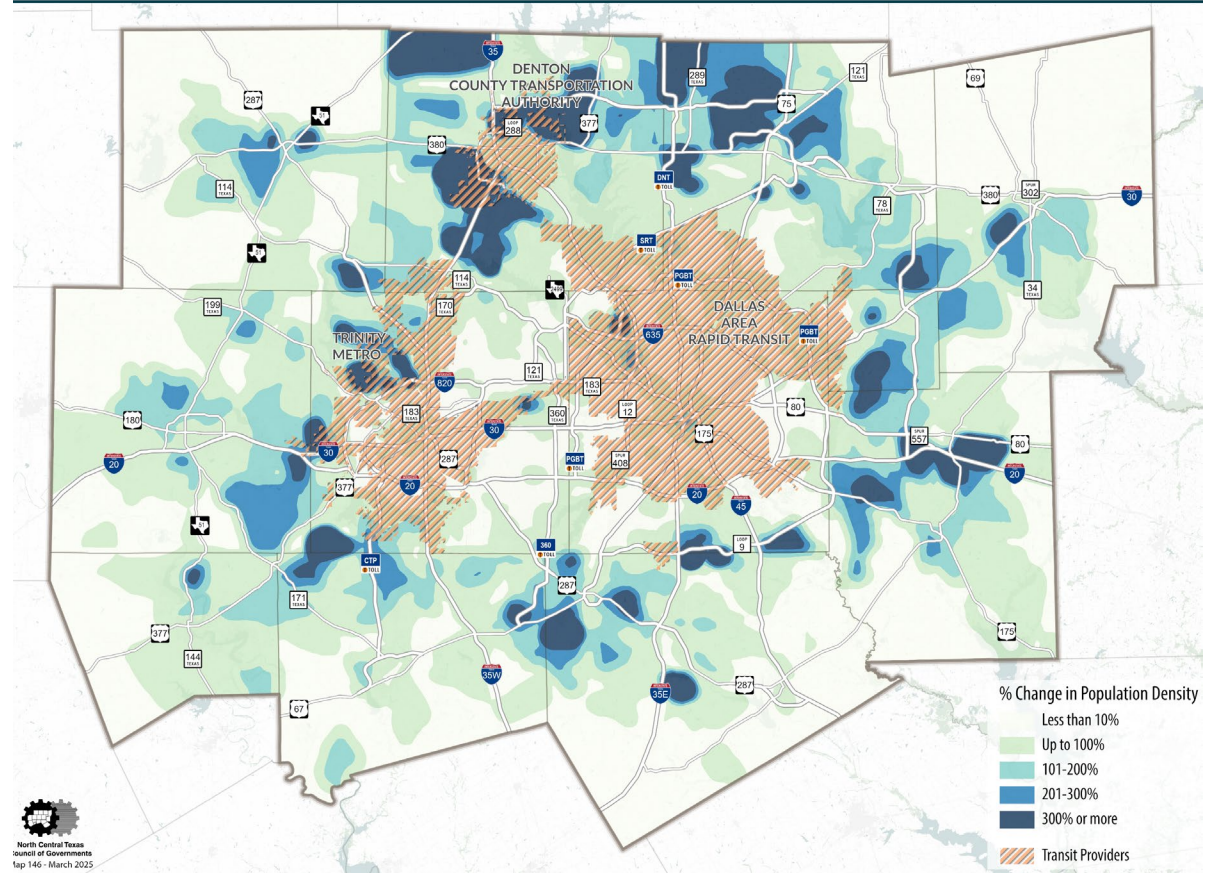


Expand & Connect

Improve coverage regionwide and link modes and on-demand services.

Population Density Change and Transit Authority Areas

MOBILITY2050



COMING UP NEXT

2025 Dates	Milestone
July-December	Federal Transportation Conformity review period; Conformity determination received
Ongoing	Needs assessments and scenarios Continuous planning

Stay Connected



Website

nctcog.org/planinprogress



Social media

@nctcogtrans

#PlanInProgress



Public Meetings

nctcog.publicinput.com/#events



Public Input Platform

publicinput.com/mobility2050



Email Us

mobility2050@publicinput.com



Map Your Experience

nctcog.org/mye

Contact Us



Amy Johnson

Principal Transportation Planner

ajohnson@nctcog.org | 817-704-5608



Brendon Wheeler, P.E., CFM

Senior Program Manager

bwheeler@nctcog.org | 682-433-0478