



Implementing Eco-Logical in North Central Texas

North Central Texas Council of Governments
Water Resources Council Meeting
January 21, 2016

NCTCOG Transportation Department

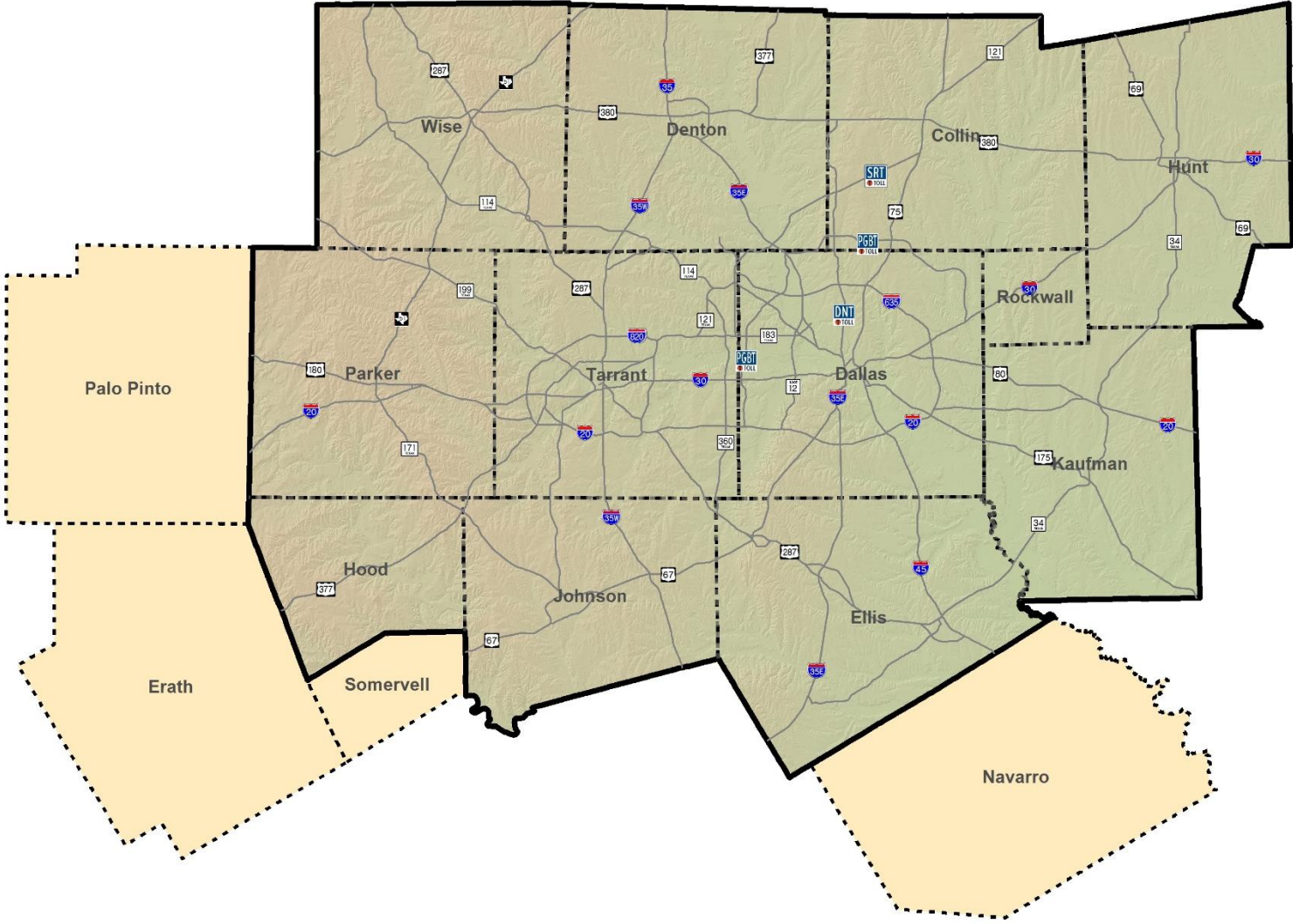
- NCTCOG Transportation Department and the Regional Transportation Council (RTC) form the Metropolitan Planning Organization (MPO) for the Dallas-Fort Worth area.
- Federally designated as MPO in 1974.
- Conduct long-range transportation planning.



**North Central Texas
Council of Governments**



Metropolitan Planning Area



NCTCOG PEL Efforts

Transportation Resource Agency Consultation and Environmental Streamlining (TRACES) Stakeholder Group

Regional Ecosystem Framework (REF) Developed

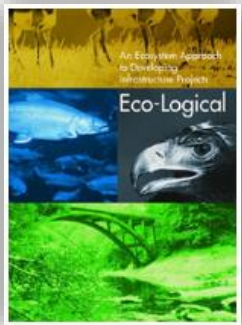
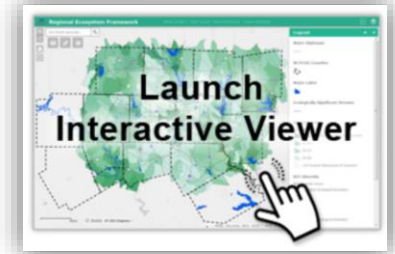
REF Documented in Mobility 2035

REF Project-Level Application

REF Used for Scoring Mobility 2040

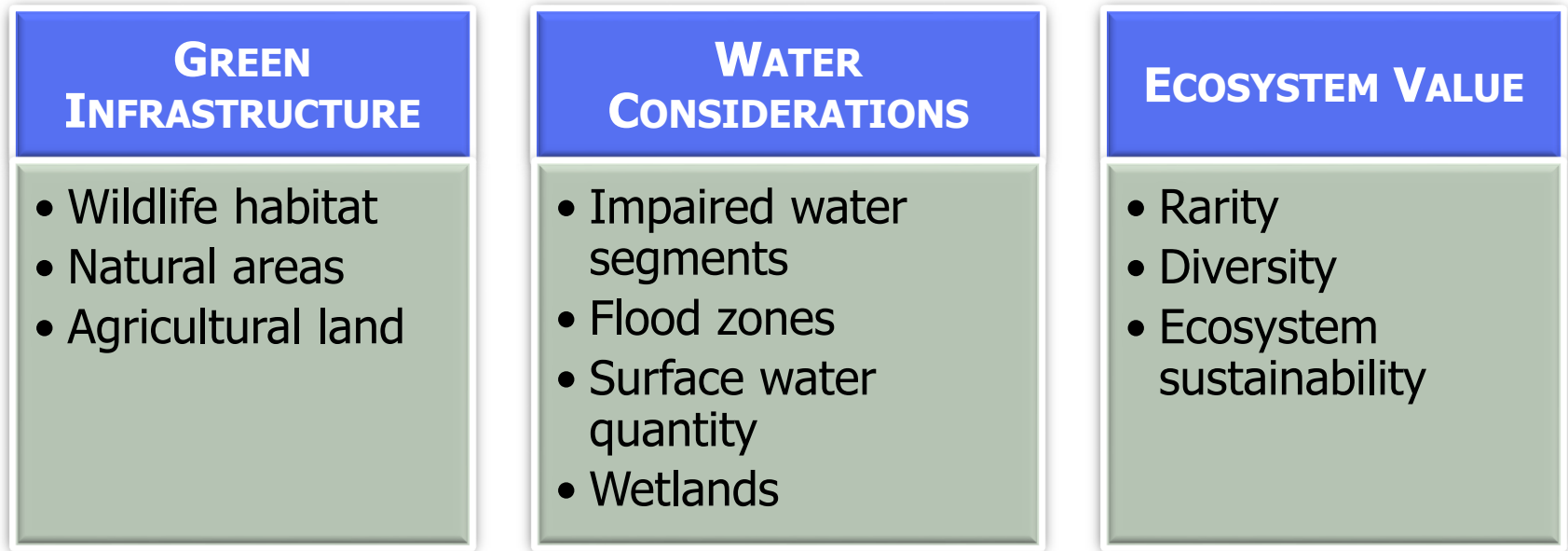
REF Interactive Viewer Launched

Assessing feasibility of wetland mitigation projects



REF Development

NCTCOG REF Comprises 10 Ecological Layers



Water Considerations Data Sources

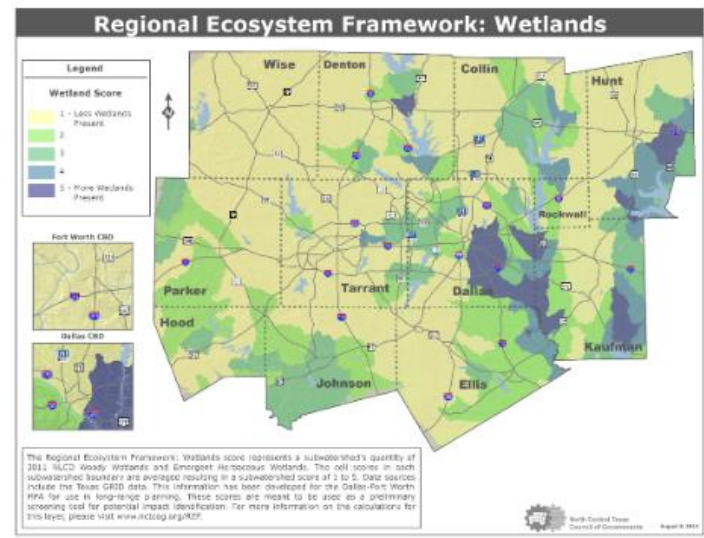
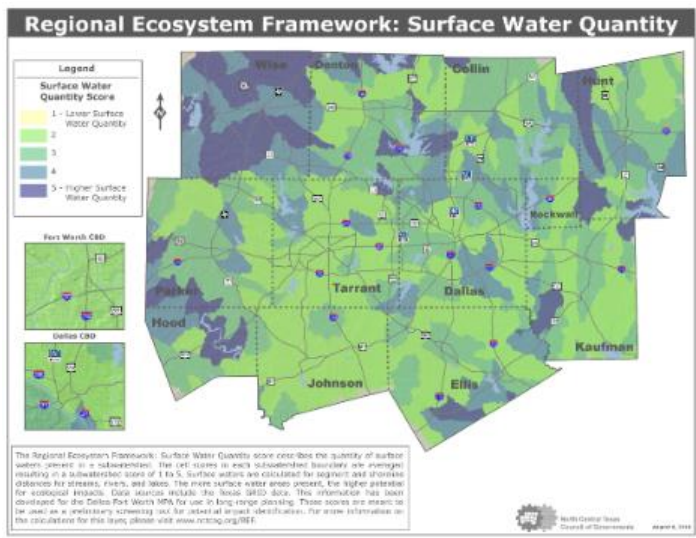
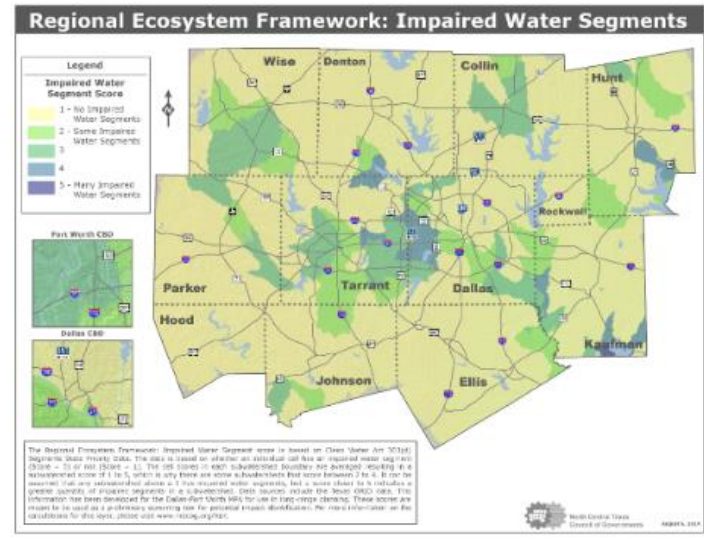
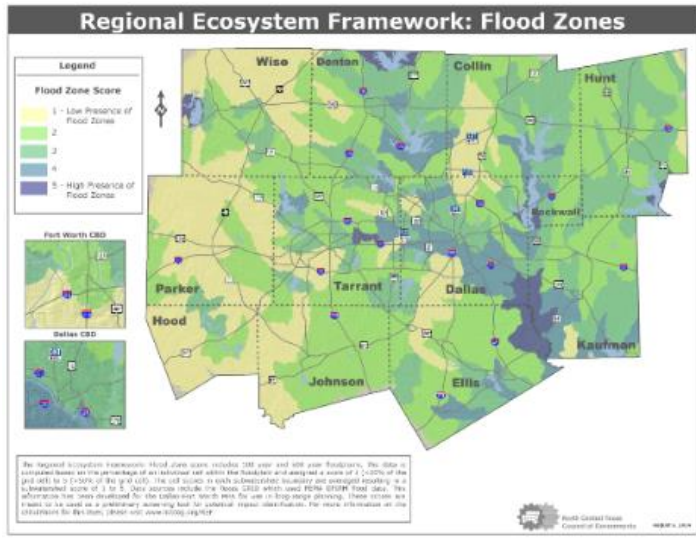
2012 Integrated Report (Texas Commission on Environmental Quality)

Flood Zones (FEMA)

National Hydrography Dataset (USGS)

National Land Cover Database (USGS/DOI)

REF Water Considerations Layers



REF Interactive Viewer

The screenshot displays the 'Regional Ecosystem Framework' interactive viewer. The interface includes a top navigation bar with links for 'What is REF?', 'User Guide', 'Data Dictionary', and 'Leave Feedback'. A search bar labeled 'Esri World Geocoder' is positioned at the top left. The main map area shows a geographical view of Lake Arlington, with various colored overlays representing different ecosystem components. A pop-up window titled '(3 of 4) WPPs_COG: Lake Arlington' is overlaid on the map, providing the following details:

| WPPs_COG: Lake Arlington | |
|--------------------------|----------------|
| Watershed | Lake Arlington |
| Sponsor | 3rd Party |
| Acres | 91,077.41 |

Below the table is a 'Zoom to' button. On the right side of the interface, a 'Layer List' panel is visible, containing a list of map layers with checkboxes and expand/collapse icons:

- 303(d) Streams
- Impaired Streams
- 303(d) Lakes
- Impaired Lakes
- Watershed Protection Plans
- TMDL IPlan Area
- HUC12 Subwatersheds
- HUC10 Watersheds
- National Ecosystem Framework
- REF Composite
- REF Agriculture
- REF Diversity
- REF Flood Zones
- REF Impaired Water Segments
- REF Natural Areas
- REF Rarity
- REF Surface Water Density
- REF Sustainability
- REF Wetlands
- REF Wildlife Habitat

REF Interactive Viewer

Regional Ecosystem Framework What is REF? User Guide Data Dictionary Leave Feedback

Esri World Geocoder

Impaired Stream (1 of 4)

Segment ID: 0841R
Segment Name: Rush Creek
Stream Miles: 1.02
Description: A 5 mile stretch of Rush Creek running upstream from confluence with Village Creek to confluence with Kee Branch in Arlington, Tarrant Co.
Year: 2012
[Zoom to](#)

Layer List

- Small Water Bodies
- Ecologically Significant Streams
- Named Streams
- National Wetlands Inventory
- 303(d) Streams
- Impaired Streams
- 303(d) Lakes
- Impaired Lakes
- Watershed Protection Plans
- TMDL IPlan Area

Options Filter by Map Extent Zoom to Clear Selection Refresh

| Segment ID | Segment Name | Stream Miles | Description | Year |
|------------|---------------|--------------|--|------|
| 0841R | Rush Creek | 1.02 | A 5 mile stretch of Rush Creek running upstream from confluence with Village Creek to confluence with Kee Branch in Arlington, Tarrant Co. | 2012 |
| 0841T | Village Creek | 5.91 | A 7 mile stretch of Village Creek running upstream from confluence with West Fork Trinity River to SH 303 approx. 0.75 mi. downstream of Lake Arlington. | 2012 |

- Users can access information by clicking on the map and by opening the attribute table.
- Users can print PDFs of maps, draw on maps, and open website layers in their own ArcGIS account.

Wetlands Mitigation

NCTCOG is assessing the need for the agency to become involved in wetland mitigation:

- Supply and demand of mitigation credits
- Definition of existing wetlands
- Impact of projects from long-range transportation plan
- Potential wetlands mitigation sites
- Critical conservation areas
- Common goals between transportation planners, resource and regulatory agencies, and conservation groups.



Technical and conservation stakeholders welcome!

Contact Information

Project Information and Interactive Viewer:
www.nctcog.org/ref

Kate Zielke, Transportation Planner
817-608-2395, kzielke@nctcog.org

Kendall Wendling, AICP, Senior Transportation Planner
817-704-2544, kwendling@nctcog.org