



What's New in ArcGIS Pro 3.5 and ArcGIS Enterprise 11.5

Christopher Walters and Riley Nolan



ArcGIS Pro 3.5 | Overview

Quality, Performance, Productivity & Usability

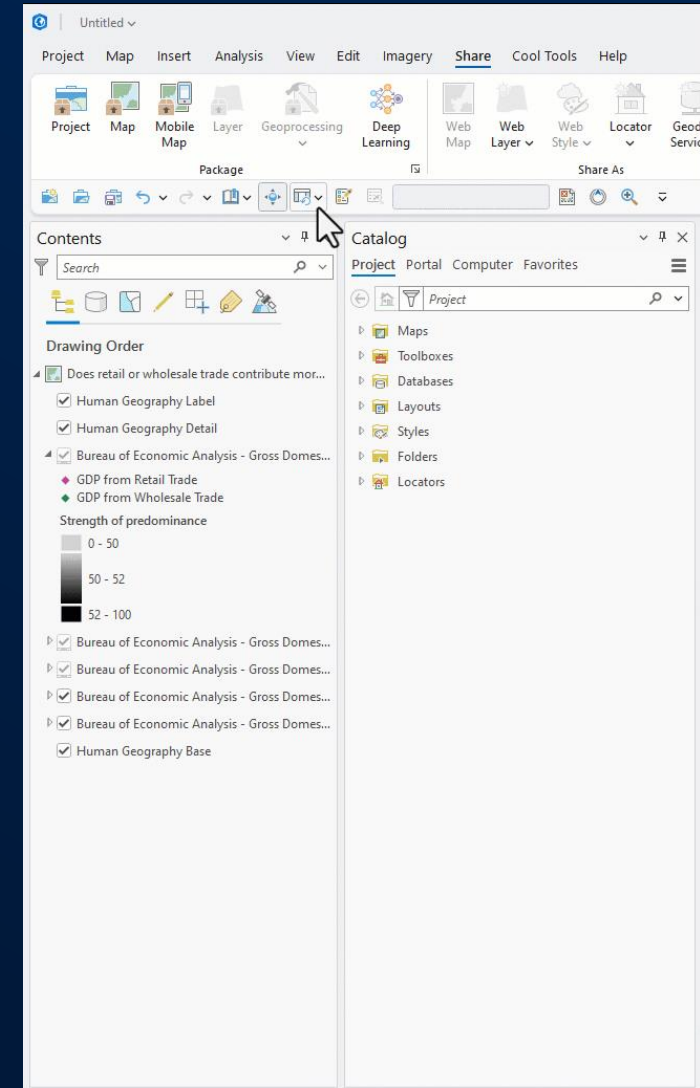
Listening to our users, ArcGIS Pro 3.5 puts a greater focus on quality, performance, productivity and usability.



Custom Pane Sets

Productivity & Usability

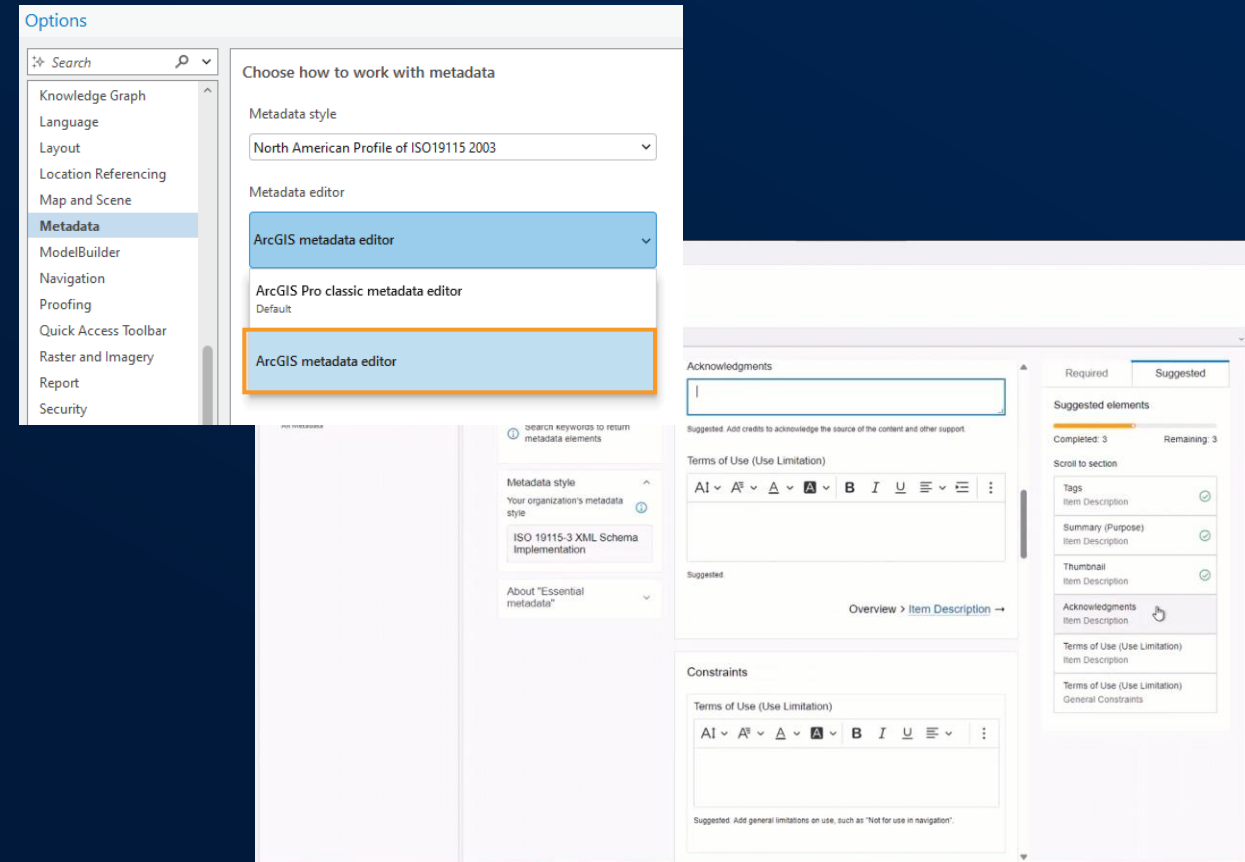
- “Reset Panes” is not new
- Save named pane sets for your common workflows
- Edit experience to rename, remove, update
- Add predefined sets to QAT
- Create shortcuts



Metadata Editor

Productivity & Usability

- Editing metadata is not new
- Unified experience across ArcGIS Online, ArcGIS Enterprise, and ArcGIS Pro
- Simplified interface for essential metadata
- Completeness score for required elements

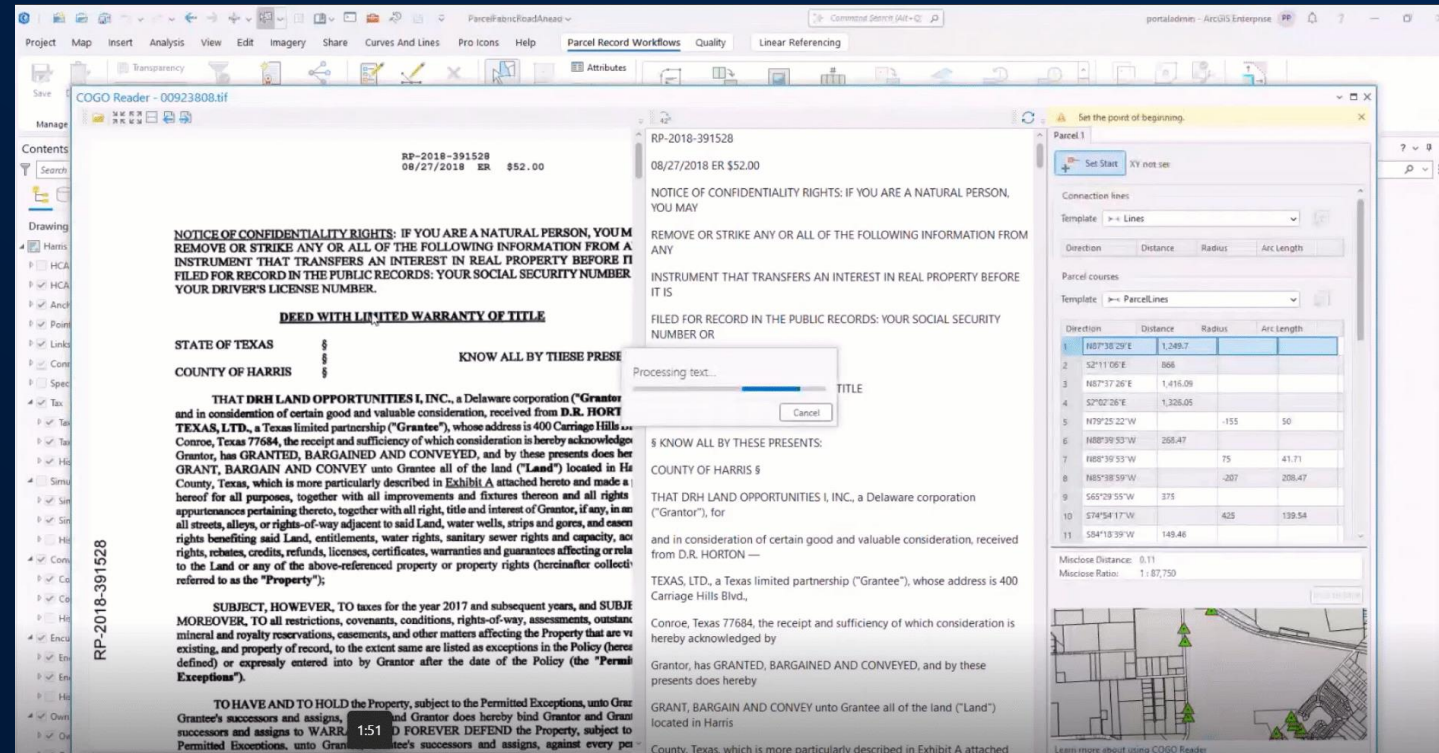


Simplified and consistent metadata experience across ArcGIS...

COGO Reader

Productivity

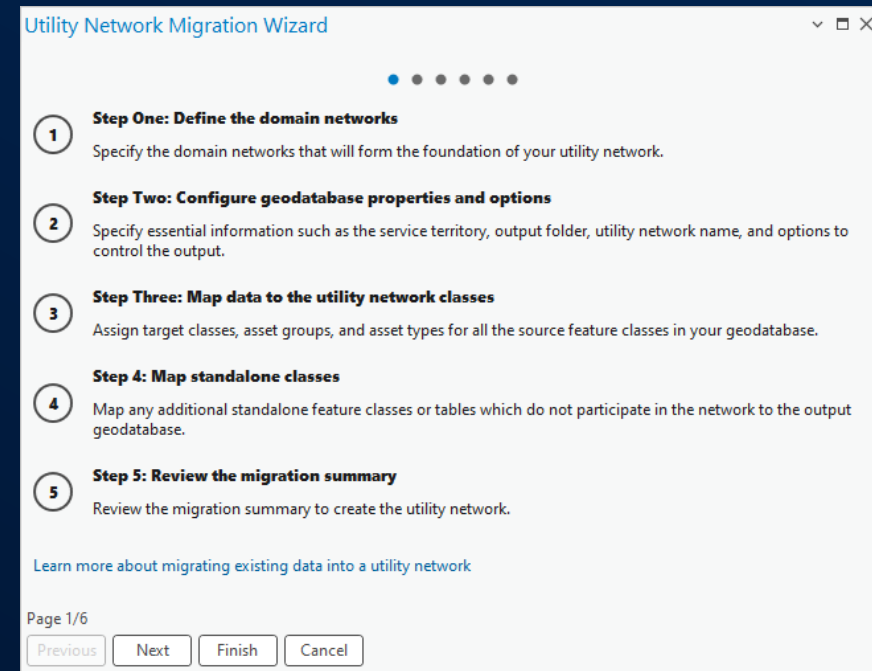
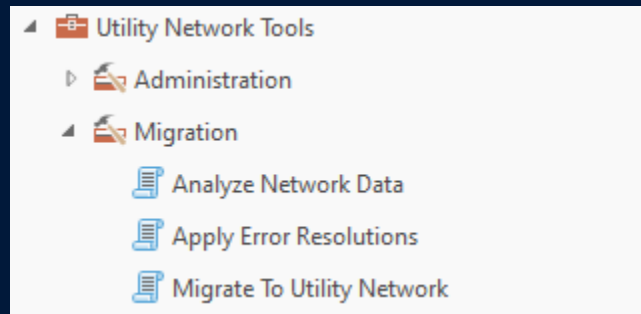
- For Parcel Fabric
- Uses Optical Character Recognition (OCR) to add courses to traverse
- Accepts PDF, TIFF, PNG, JPG
- Saves time and can reduce data entry errors



Utility Network Migration tools

Productivity

- Easy and simple - migrate your data into a base Utility Network model
- Minimize the amount of change required



Calculate Field Enhancements

Productivity & Performance

- New Python helper function – Convert Spatial Units
- Recent button – re-use your latest valid expression
- Performance improvement for fixed number, string value, expressions with only one field
- SQL Support for File and Mobile GDBs

File Geodatabase – Calculate field using SQL

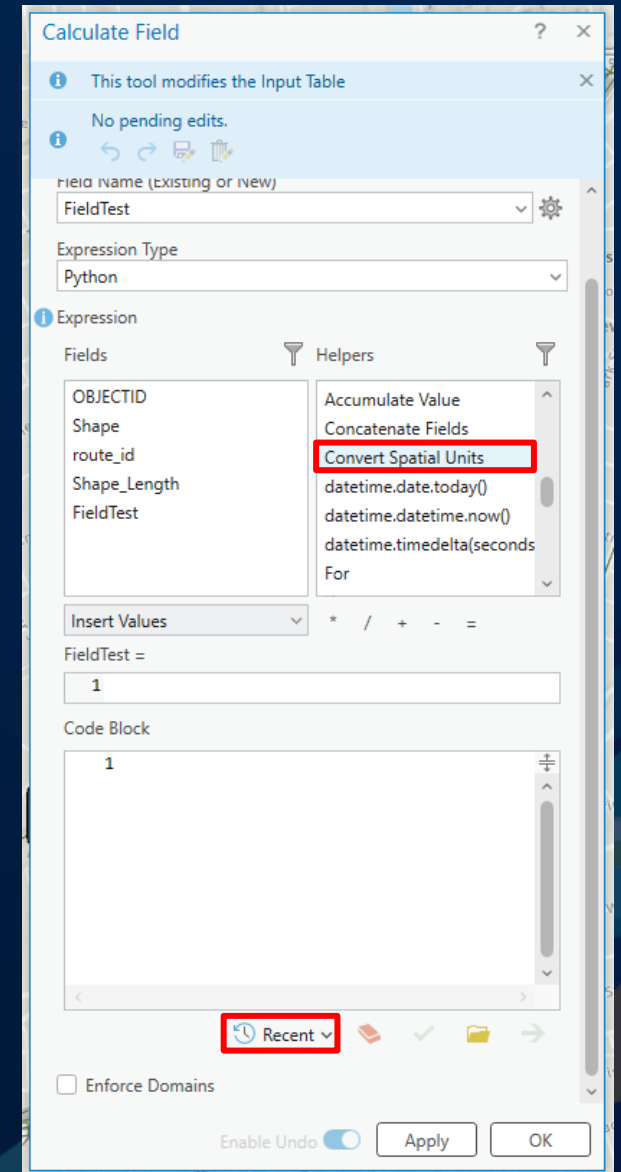
509 8 04-17-2023 06:22 PM

Status: In Product Plan Labels Geodatabase

Mobile Geodatabase – Calculate field using SQL

376 1 03-27-2023 03:17 PM

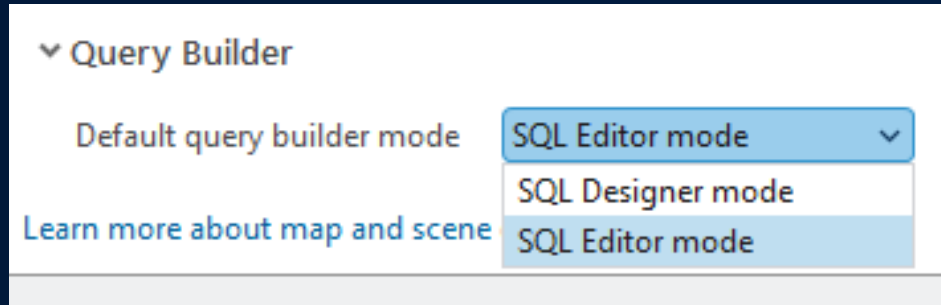
Status: In Product Plan Labels Geodatabase



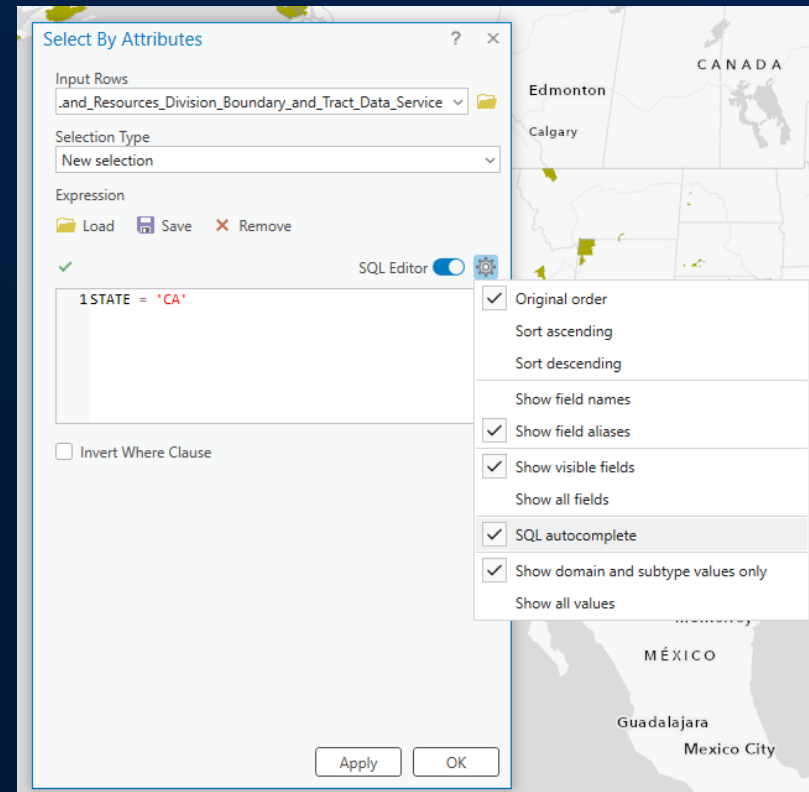
SQL Query Writing Enhancements

Productivity & Performance

- Option: Default query builder mode



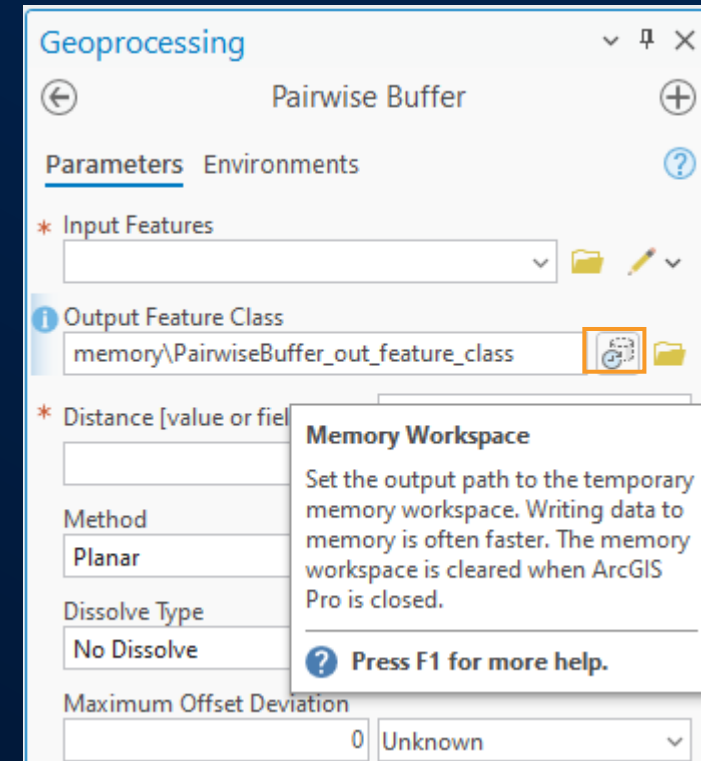
- Disable autocomplete



Memory workspace

Usability & Performance

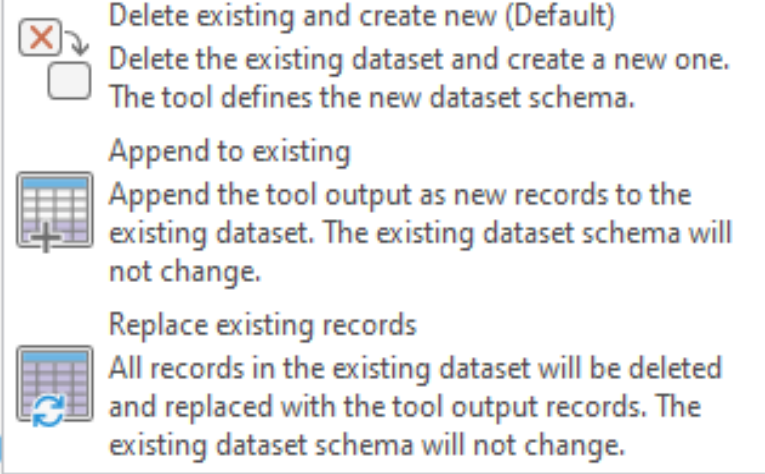
- New button increases discoverability of memory workspace
- Faster processing for intermediate data





Geoprocessing overwrite enhancements


Productivity & Usability

- Choose from three overwrite options
 - Delete existing and create new (default)
 - Append to existing
 - Replace existing records





 Delete existing and create new (Default)
Delete the existing dataset and create a new one. The tool defines the new dataset schema.

 Append to existing
Append the tool output as new records to the existing dataset. The existing dataset schema will not change.

 Replace existing records
All records in the existing dataset will be deleted and replaced with the tool output records. The existing dataset schema will not change.

Overwrite Options

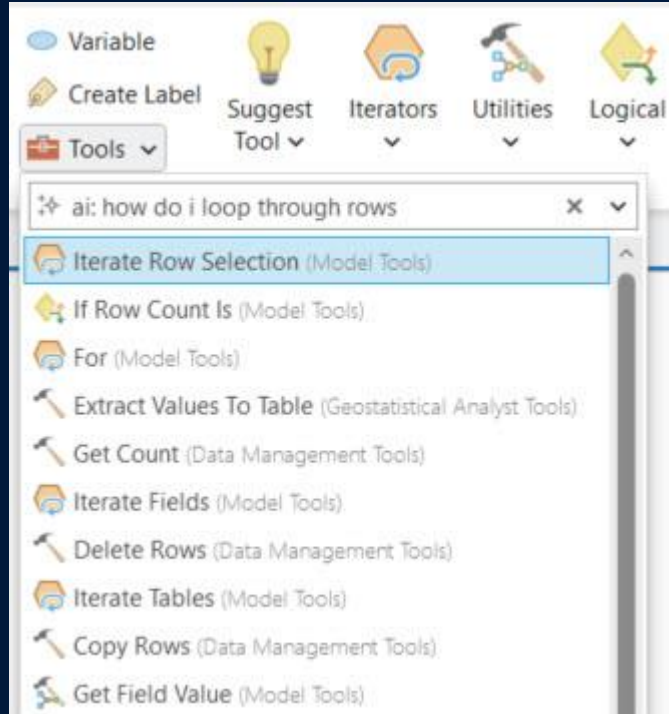
 Delete existing and create new (Default) ▼

 Run ▼

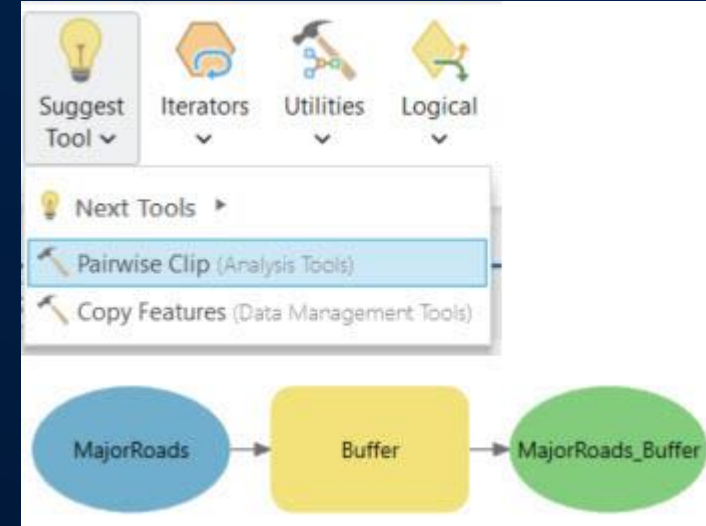
ModelBuilder enhancements

Productivity & Usability

- Semantic search



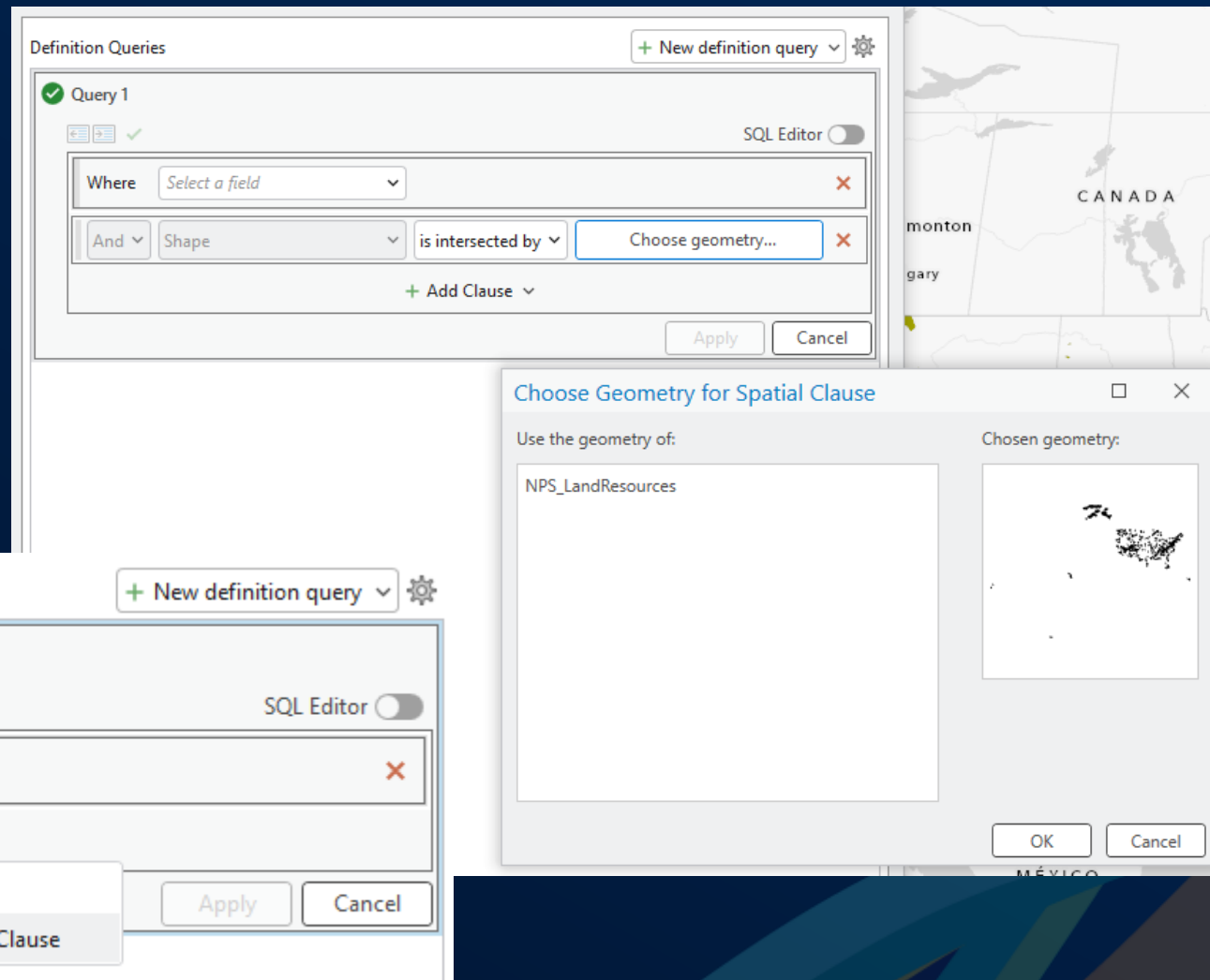
- Tool suggestions



Spatial Definition Query

Productivity

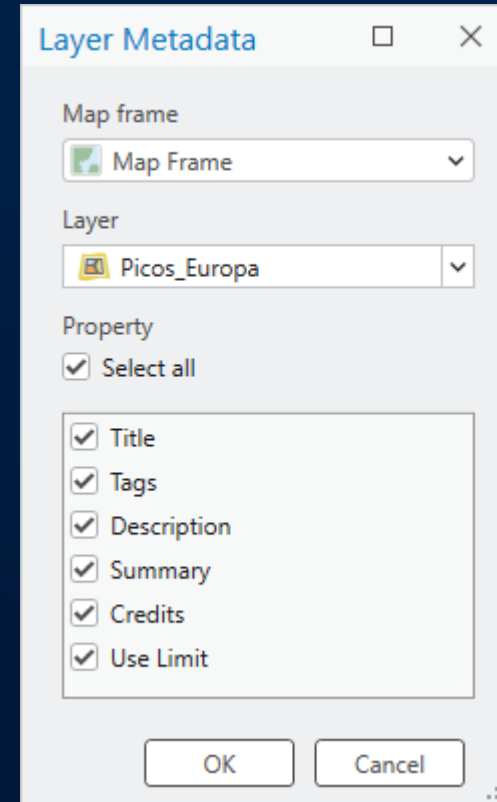
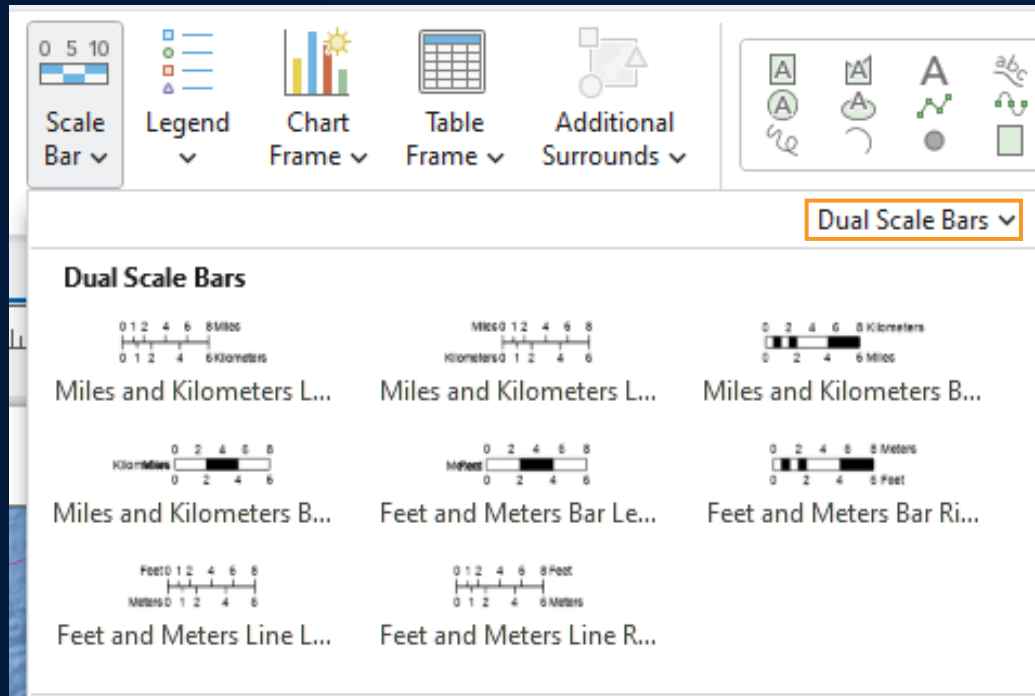
- New type of Definition Query clause
- Can use geometry of layer or of other layers



Layout

Productivity

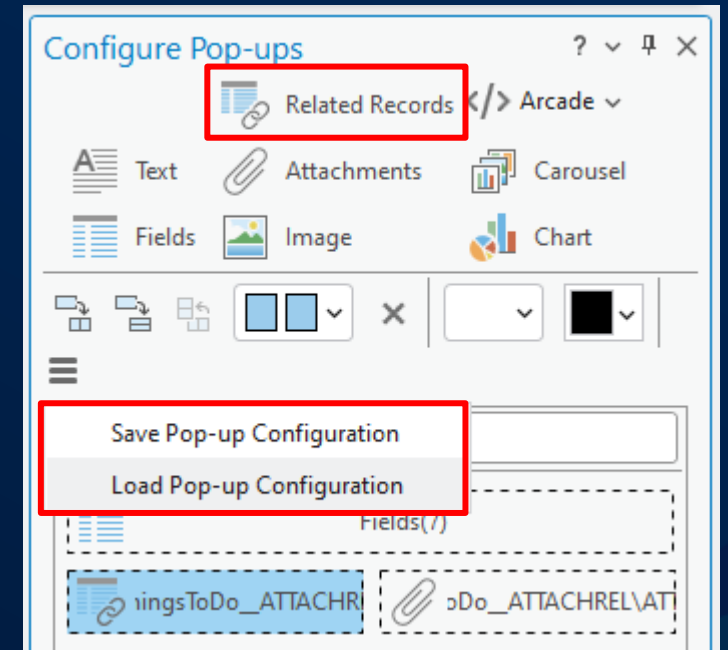
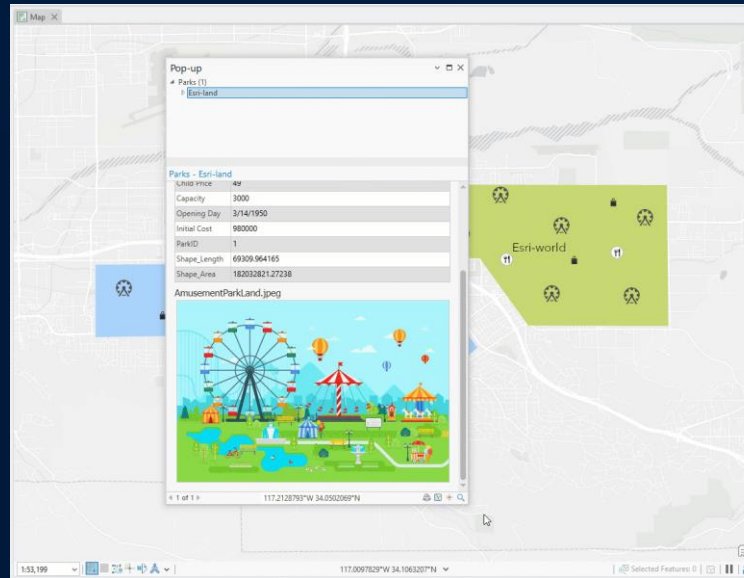
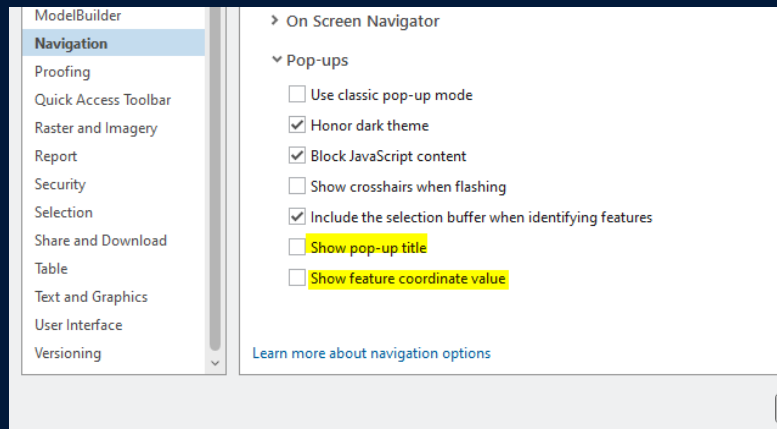
- Create and manage scale bars with two units
- Layer metadata – Dynamic text



Pop-up Enhancements

Productivity

- Related Records element
- Pop-up configuration file (.pop)
- Show/Hide pop-up title
- Show/Hide coordinate value
- Images auto-fill pop-up space



Sharing CAD data

Productivity & Quality

- Sharing CAD layers directly was added last release
- Improvements to quality and consistency in ArcGIS Pro 3.5
 - More consistency in symbology when sharing CAD layers
 - Multipatch CAD layers now available when creating 3D Object scene layers



But wait... there's more!

Quality, Performance, Productivity, and Usability

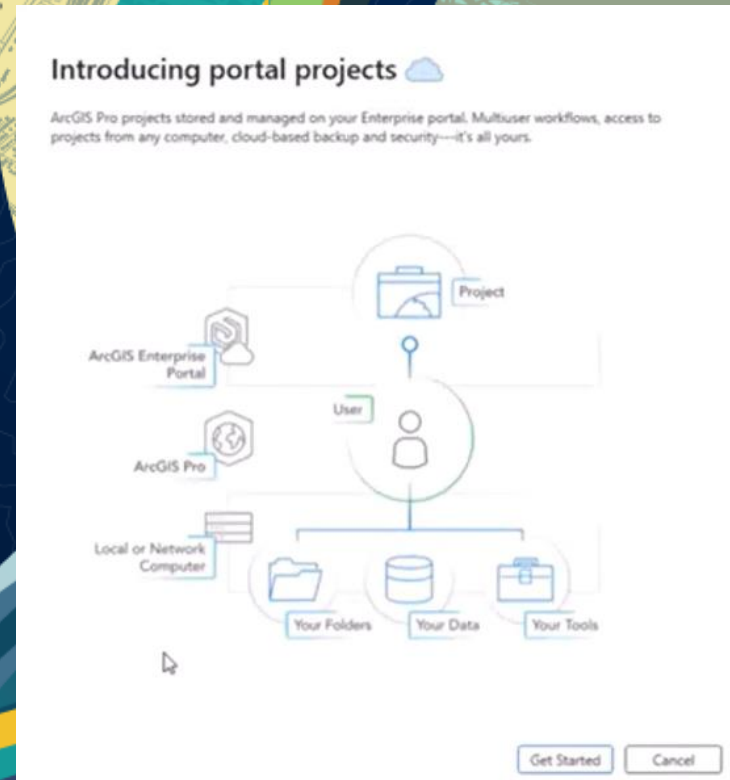
- Raster to Polygon (Spatial Analyst) performance improved
- Distance tools (Spatial Analyst) performance improved
- Disable animated flashing effects for interactive tools
- Copy/paste layers in Contents pane is faster
- Copy/paste bulleted text into layouts & presentations
- Paste Special added to core Selection tool context menu
- Prune Archive History support for branch versioning
- Max field name length increased in fields view and create feature class wizard
- Flood simulation – multiple improvements



Fewer new features. High focus on improving existing features and functionality...

New Features/Functionality

Portal Projects is the big new feature for
ArcGIS Pro 3.5



Portal Projects - Created, stored, managed in [ArcGIS Enterprise 11.4 or later](#)

Use Cases

- One person can use a project on a single computer. This safeguards the project from damage or failure that may occur on a local or network drive.
- One person can use a project on multiple computers. This makes it possible to work on the project from a work computer and a home computer, for example.
- One person can create a project for others. For example, an administrator can deliver ready-to use projects to individuals or to groups in the Enterprise organization.
- Many people can use the same project. This allows people with different skills and responsibilities to work collaboratively on the project.

Portal Projects

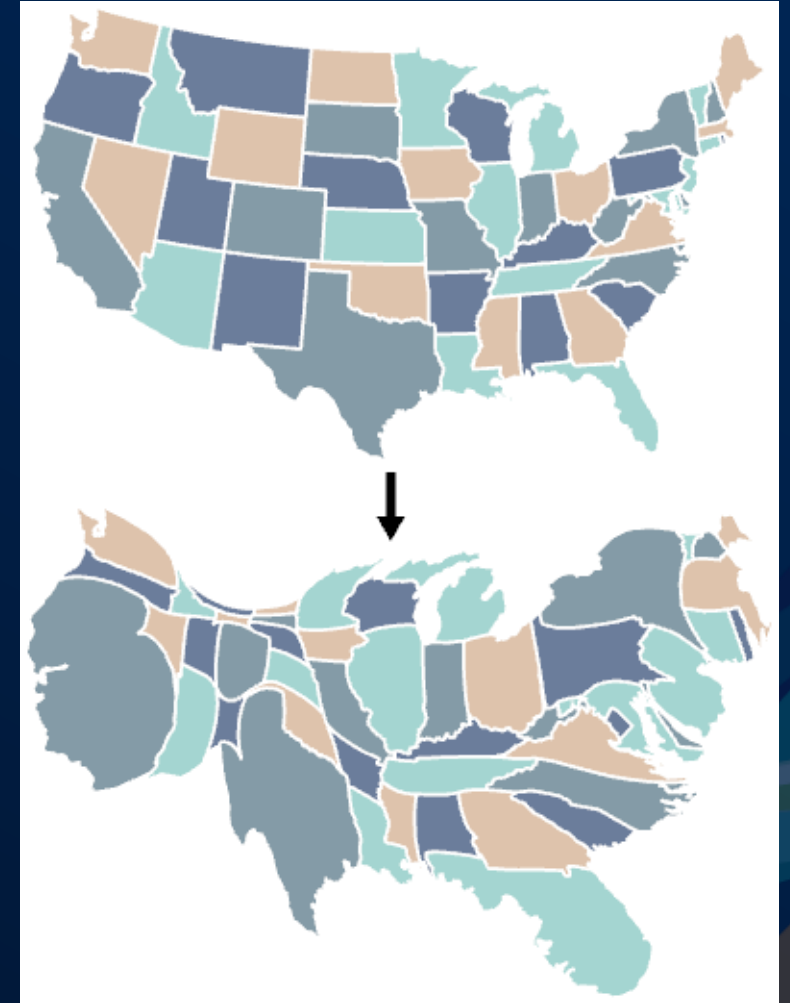
Benefits

- Simultaneous multiuser access to the portal project.
- Cloud-based storage and security.
 - ArcGIS Pro does not support OneDrive or other cloud-based products as non-virtual working environments for ArcGIS Pro.
- Access to a project from multiple computers without using a virtual private network (VPN).
- Permissions and privileges managed on an ArcGIS Enterprise portal rather than on the operating system.

Create contiguous cartograms

Mapping & Visualization

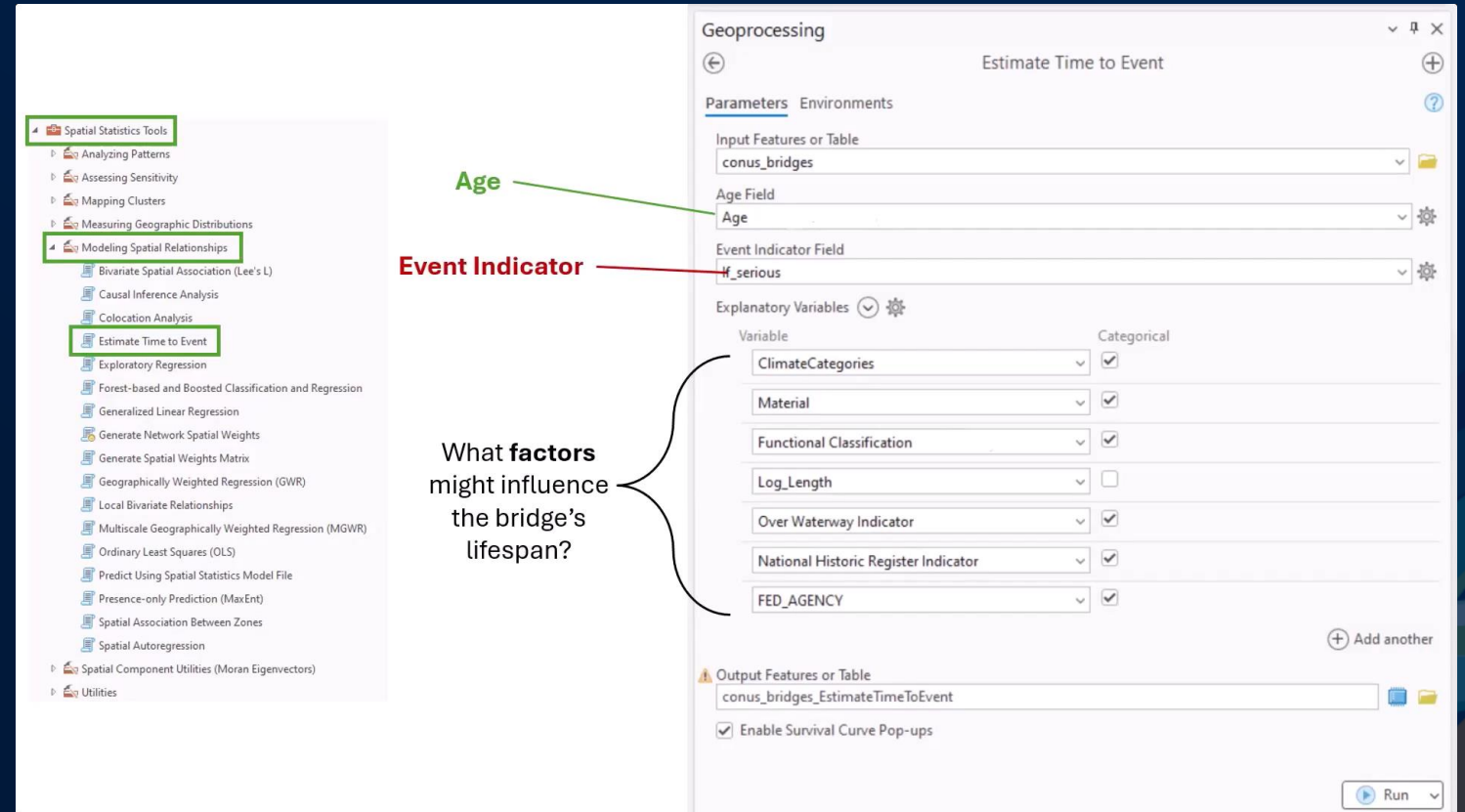
- Alters the area of polygon features to be visually proportional to the values in a field while keeping shared edges
 - Example: total population of each state



Estimate Time to Event

Analysis & Geoprocessing

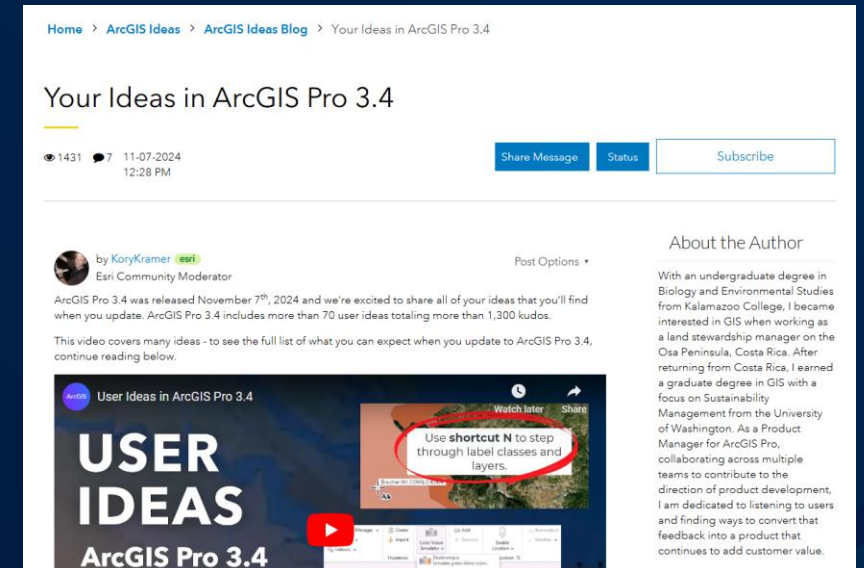
- Predict the time until an event occurs based on the prior times to the event



ArcGIS Pro User Community

User contributions make ArcGIS Pro better!

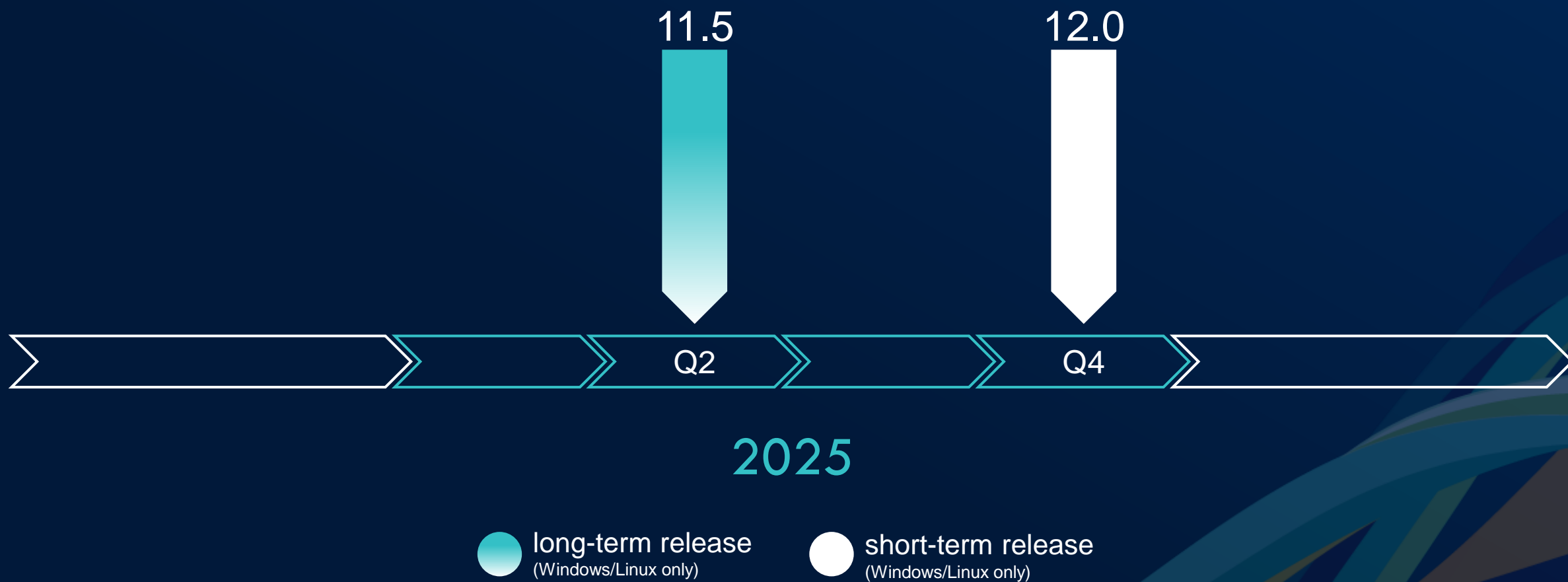
- 1000+ new Ideas in the past year
- 70+ Ideas in ArcGIS Pro 3.4
 - Symbology - changing the Value should NOT update the Label (175 kudos)
 - Minimize floating attribute tables in ArcGIS Pro (149 kudos)
 - Selection to Definition Query (111 kudos)
- On track for 40+ Ideas in ArcGIS Pro 3.5
 - Dual scale bars showing different units (569 kudos)
 - Custom Pane Settings in "Reset Panes" Menu (83 kudos)
 - Turn off animated effects in ArcGIS Pro (80 kudos)



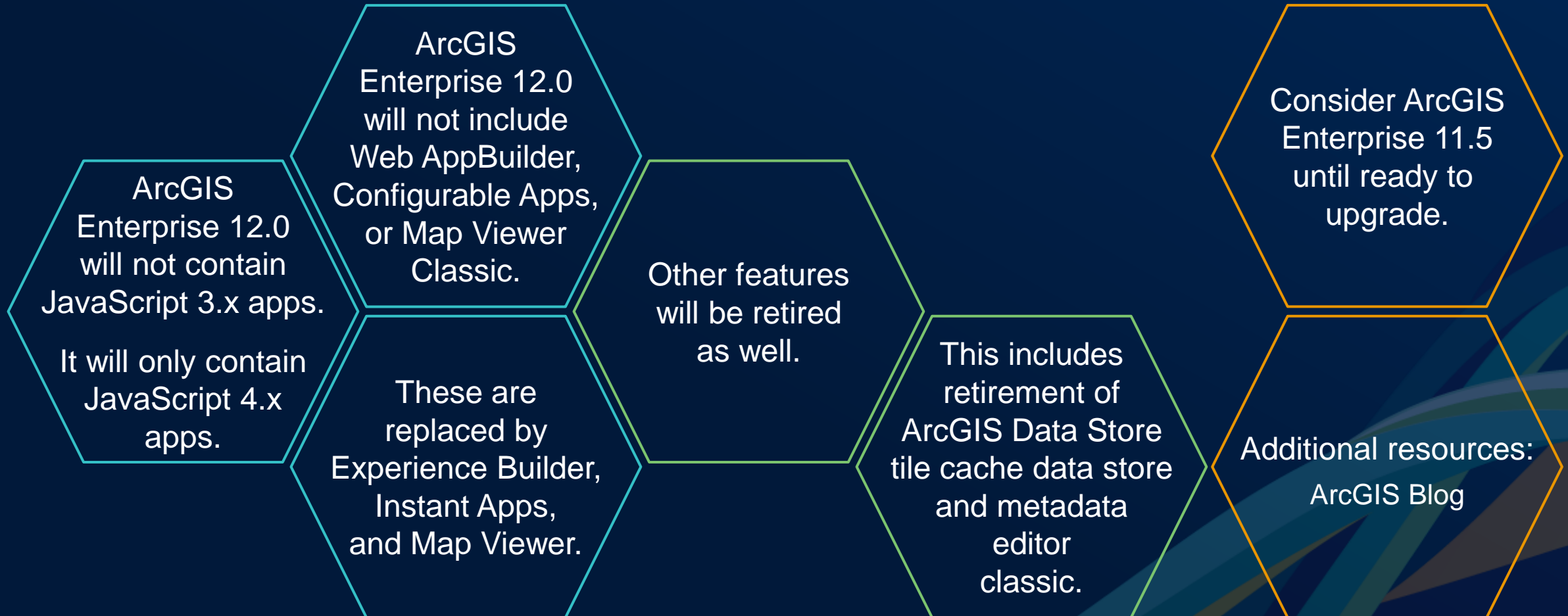


ArcGIS Enterprise 11.5 | Overview

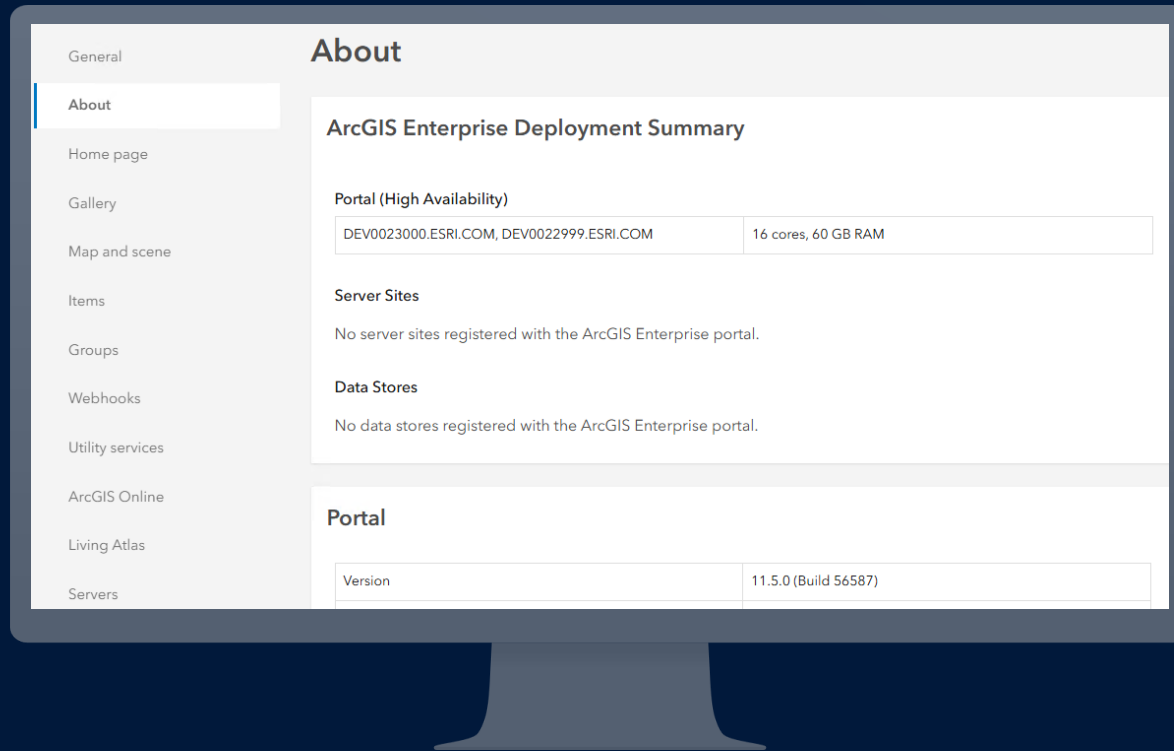
Release timeline



ArcGIS Enterprise 11.5 prepares for 12.0



About



*Consolidates information about
ArcGIS Enterprise into a
single, easily accessible location.*

Hardware

- CPU
- RAM
- Operating system

Licenses

- License types
- Number of cores

Deployment insights

- Version(s)
- Federated servers
- Data stores

Service usage by user report

- Captured in ArcGIS Server.
 - Accessed via ArcGIS Server Admin API.
- Reports the number of times a service has been accessed.
- Service usage is broken down by each unique user.
- Provides insight into how content is being accessed.

ArcGIS Server Administrator Directory	
Home > usagereports > Service usage by users for the last month > data	
Usage Report	
Service usage by users for the last month	
Timestamp	ServiceUsageByUsers of services/
1731025200000	NODATA
1731111600000	NODATA
1731198000000	NODATA
1731284400000	NODATA
1731370800000	NODATA
1731457200000	NODATA
1731543600000	NODATA
1731630000000	Hosted/Redlands_Streets.FeatureServer,pubuser,25 Hosted/Date.FeatureServer,admin,1
1731716400000	NODATA
1731802800000	NODATA
1731889200000	NODATA
1731975600000	Hosted/Redlands_Streets.FeatureServer,pubuser,13 Hosted/countries.FeatureServer,admin,16
1732062000000	NODATA
1732148400000	Hosted/countries.FeatureServer,admin,13 Hosted/Date.FeatureServer,admin,4 Hosted/Hurricanes2.FeatureServer,,2 Hosted/Hurricanes2.FeatureServer,pubuser,2 Hosted/Redlands_Streets.FeatureServer,pubuser,55
1732234800000	Hosted/countries.FeatureServer,admin,13 Hosted/Hurricanes2.FeatureServer,,4 Hosted/Hurricanes2.FeatureServer,pubuser,2 Hosted/Redlands_Streets.FeatureServer,pubuser,13 Hosted/Date.FeatureServer,admin,5

Audit logging

- Now available for ArcGIS Server component.
- Records user activity and some changes made to the system.
- Tool for monitoring and troubleshooting any potential critical or breaking changes.
- Identify:
 - Users or processes that made those changes
 - Effects on the system
 - Times those events occurred
- Logs recorded in JSON syntax.

```
{
  "version": "Audit record version number",
  "loggedby": "ArcGIS for Server [version number]",
  "timeStamp": "Epoch time value",
  "eventId": "Unique audit record identifier",
  "event": "Event Name",
  "eventLevel": "Event level",
  "status": "Success/Failure indicator",
  "statusCode": "Status code value",
  "actor": "username",
  "actorId": "user id",
  "actorRole": "User's role",
  "sourceIp": "Source IP address",
  "destinationIp": "Destination IP address",
  "destinationHost": "Destination host name",
  "resource": "Resource URI",
  "data": {
    "data_attribute1": "attribute value",
    "data_attribute2": "attribute value"
  },
  "userAgent": "user agent information",
  "message": "Any corresponding message if applicable"
}
```


Sub-layer search

- Item searches within ArcGIS Enterprise will now return individual sublayers of hosted feature services that wouldn't have been returned in earlier versions.
- Benefits of this feature includes:
 - Simplifying and accelerating the process of discovering content
 - Minimizing content bloat by eliminating the need to maintain sub-layers as individual layers or create duplicative layers.

The screenshot displays the ArcGIS Enterprise search interface. At the top, a blue header bar contains the word "Search". Below this, a search bar shows the query "hospitalSmall". The main content area is divided into two columns. The left column displays the details for the selected item, "hospitalSmall", which is a Feature Layer. It includes an "Overview" section with a summary (No summary provided), the owner "KD kdoshier_energy0", and sharing settings (Everyone (public)). The "Layers (1)" section is highlighted with a blue border and shows "Matched (1)". The right column displays a list of search results, including "hospitalSmall", "TestPlanRoutes", and "PlanRoutes020618155844_en". Each result shows the item name, type (Feature Layer), and last edited date.

Search

Q hospitalSmall

1-3 of 3

hospitalSmall
Feature Layer | Last edited: Aug 28, 2023

TestPlanRoutes
Feature layer generated from Plan Routes
Feature Layer | Last edited: Feb 28, 2018

PlanRoutes020618155844_en
Feature layer generated from Plan Routes
Feature Layer | Last edited: Feb 7, 2018

hospitalSmall
Feature Layer

Overview

Summary
No summary provided

Owner
KD kdoshier_energy0

Sharing
Everyone (public)

Item updated
Aug 28, 2023

Description

Details

Layers (1)
Matched (1)

ArcGIS Enterprise 11.5 web app highlights

Map Viewer enhancements include editing, styling and symbology updates.



ArcGIS Dashboards now have dual-axis charts and element headers.



ArcGIS Experience Builder includes Express Mode.



ArcGIS Instant Apps has three new templates.
Compare | Observer | Streamflow Viewer



ArcGIS StoryMaps stories, briefings, and collections reflect their item classification.



ArcGIS Web Editor includes batch editing and utility network editing enhancements.





esri®

THE
SCIENCE
OF
WHERE®