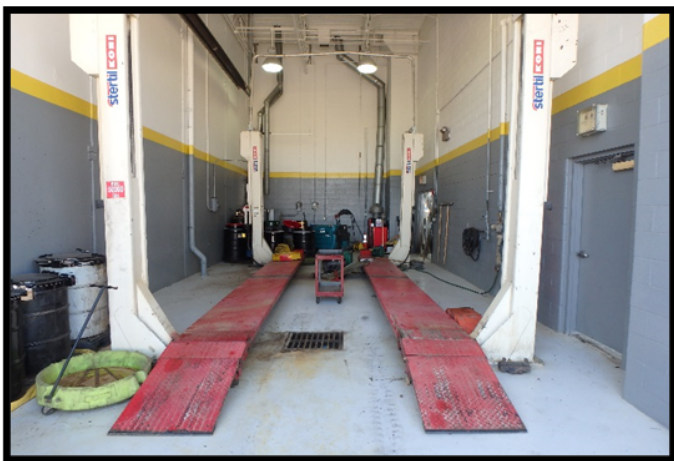


DO YOUR PART

KEEP POLLUTION OUT OF STORM DRAINS & WATERWAYS

FLEET MAINTENANCE



Vehicle & Equipment Maintenance/Cleaning

- Perform maintenance and cleaning in designated areas.



Parts Cleaning

- Wash parts in designated cleaning stations.
- Make sure parts fully drain before removing them.



Leaking Vehicles

- Park leaking vehicles under cover.
- Use a drip pan or absorbents for collection.



Fueling

- Inspect fueling areas often, and clean as needed.
- Don't top off the fuel tank!
- Know the locations of the emergency shut-off button and spill kit.

Report Pollution & Illegal Dumping!

Be our eyes—look for and report signs of water pollution. Signs include odor, an oily sheen on the water's surface, colored or cloudy water, dead or dying fish, and excess trash. Dispose of hazardous materials properly. Report spills and issues to



[City Logo]

DO YOUR PART

KEEP POLLUTION OUT OF STORM DRAINS & WATERWAYS

FLEET MAINTENANCE



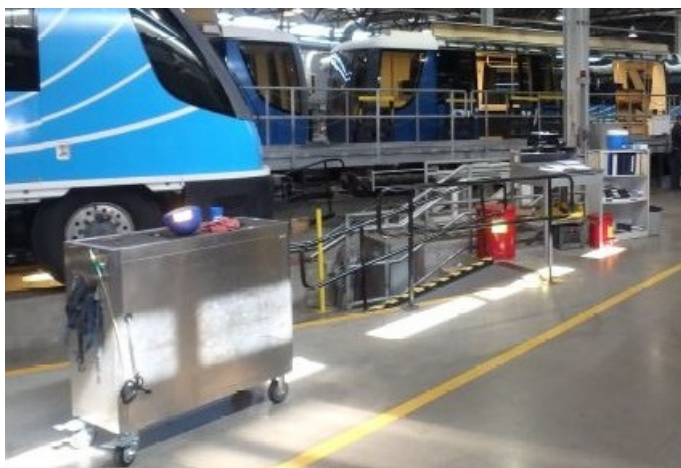
Spills

- Clean up spills immediately.
- Use a drip pan or absorbents for collection.
- Place spent absorbents into appropriately labeled disposal containers.



Cleaning Outside Work Areas

- Clean regularly. Take extra precaution if rain is forecast.
- Use dry methods such as sweeping -- don't hose down the work area.
- Make sure that trash receptacles are emptied needed.



Cleaning Shop

- Use dry methods for cleaning when possible.
- Dispose of mop water properly. It should go into the sanitary sewer system. Promptly dispose of waste.



Used Fluid, Filter, & Battery Disposal

- Store items under cover or in secondary containment.
- Store used fluids in labeled containers.
- Recycle or properly dispose of used fluids, hydraulic filters, and batteries.

Report Pollution & Illegal Dumping!

Be our eyes—look for and report signs of water pollution. Signs include odor, an oily sheen on the water's surface, colored or cloudy water, dead or dying fish, and excess trash. Dispose of hazardous materials properly. Report spills and issues to



[City Logo]

DO YOUR PART

KEEP POLLUTION OUT OF STORM DRAINS & WATERWAYS

DRAINAGE MAINTENANCE: INLETS, CATCH BASINS



Inlets & Structural Controls

- Maintain and inspect inlets and structural controls as required.



Compost & Mulch

- Use compost as a soil amendment, or shred leaves and add to flower beds as mulch.



Soil Management

- Limit soil erosion.
- For bare areas, plant vegetation.
- For landscaped areas, use mulch or matting.

Report Pollution & Illegal Dumping!

Be our eyes—look for and report signs of water pollution. Signs include odor, an oily sheen on the water's surface, colored or cloudy water, dead or dying fish, and excess trash. Dispose of hazardous materials properly. Report spills and issues to



[City Logo]

DO YOUR PART

KEEP POLLUTION OUT OF STORM DRAINS & WATERWAYS

STREET MAINTENANCE: CLEANUP



Trucks, Equipment, & Tools

- Clean trucks, equipment, and tools in designated wash facilities.



Cleaning Equipment Outdoors

- When wash facilities are not available, clean equipment over catch trays or absorbents spread on an impervious surface.



Absorbent Cleanup

- Promptly sweep up spent absorbents and dispose of them according to established procedures.

Report Pollution & Illegal Dumping!

Be our eyes—look for and report signs of water pollution. Signs include odor, an oily sheen on the water's surface, colored or cloudy water, dead or dying fish, and excess trash. Dispose of hazardous materials properly. Report spills and issues to



[City Logo]

DO YOUR PART

KEEP POLLUTION OUT OF STORM DRAINS & WATERWAYS

SOLID WASTE OPERATIONS: TRASH COLLECTION



Liquid & Hazardous Waste

- Do not pick up liquid waste, such as automotive fluids, paint, cooling liquids, and cooking oil.
- Do not pick up household hazardous waste, flammables, toxic waste, or explosives, such as fireworks and ammunition.
- Notify residents about household hazardous waste collection opportunities.



Litter Awareness

- Notify residents of persistent problems with scattered trash.
- Watch the area around the hopper and avoid leaving litter behind. Pick up any trash that falls from the truck during compaction.
- Cover open-topped trucks or roll-off containers with tarps.
- Cover dumpsters and make sure drain plugs are not leaking.



Spills

- Carry spill kits on collection trucks and service vehicles. Kits should include brooms, shovels, absorbents, pop-up pools, gloves, etc.
- Clean up spills immediately.
- Do not wash down a stormdrain.

Report Pollution & Illegal Dumping!

Be our eyes—look for and report signs of water pollution. Signs include odor, an oily sheen on the water's surface, colored or cloudy water, dead or dying fish, and excess trash. Dispose of hazardous materials properly. Report spills and issues to



[City Logo]

DO YOUR PART

KEEP POLLUTION OUT OF STORM DRAINS & WATERWAYS

MATERIALS STORAGE

POWERWASH.COM 2300 Cold Springs Rd Fort Worth, TX 76106

SAFETY DATA SHEET Blue Boost


1. GENERAL INFORMATION

TRADE NAME (COMMON NAME OR SYNONYM)	CAS NO.
Blue Boost	N/A
CHEMICAL NAME/DESCRIPTION	
Concentrated Premium Dish Detergent	
Emergency telephone number:	Contract Number
ChemTel: 1-800-255-3924	MIS0006628
ADDRESS (No., STREET, CITY, STATE, AND ZIP CODE)	
PowerWash.com	
2300 Cold Springs Rd.	
Fort Worth, TX 76106	
CONTACT	PHONE NUMBER
Delia Galindo	817-625-4213
ISSUED DATE	REVISED DATE
3/23/2015	3/23/2015

2. GHS Classification

Signal Word: Warning

H315 Irritant Skin: Category 2B Eyes: Category 2



HAZARD IDENTIFICATION

HAZARD DATA RATING: 1 – Health, 3 – Fire, 0 – Reactivity

0 = Minimal, 1 = Slight, 2 = Moderate, 3 = Serious, 4 = Severe

Instructions & Procedures

- Follow label or safety data sheet (SDS) instructions and established procedures.
- Contact supervisor with questions.



Safe Materials Storage

- Store materials away from high-traffic areas (ideally, indoor in sealed containers).
- Use original or clearly labeled replacement containers.



Containers

- Keep containers closed or sealed when not in use.
- Inspect containers regularly.
- Replace any damaged containers.



Spill-Trapping Devices

- Store materials on a spill containment base.
- Border storage areas with a curb, berm, or similar method.

Report Pollution & Illegal Dumping!

Be our eyes—look for and report signs of water pollution. Signs include odor, an oily sheen on the water's surface, colored or cloudy water, dead or dying fish, and excess trash. Dispose of hazardous materials properly. Report spills and issues to



[City Logo]

DO YOUR PART

KEEP POLLUTION OUT OF STORM DRAINS & WATERWAYS

PARKS & GROUND MAINTENANCE: CHEMICALS

AGMAX INDUSTRIES LTD Glyphosate 360 SAFETY DATA SHEET

Date: September 09

Product and Company Information

Product Name: Agmax Glyphosate 360
Trade Name: Glyphosate 360
Synonyms:
Recommended Use: Control of most annual and perennial grasses and broadleaf weeds
Manufacturer: Agmax Industries Limited
Address: 47 Allens Road, East Tamaki, Manukau City 2141, Auckland
Phone Number: 09 271 5290
Fax Number: 09 271 5293
Emergency Number: 0508 524 824 Monday – Friday 8:00 am – 5:00 pm
0800 243 622 (24 hours)

Instructions & Procedures

- Follow label or safety data sheet (SDS) instructions and established procedures related to chemical use, safety, storage, and disposal.
- Contact supervisors with questions.



Mixing & Applying Chemicals

- Mix chemicals at a proper location (such as on pavement away from storm drains).
- Mix only the amount required.
- Only apply if weather permits (no rain forecast, not windy).
- Avoid sensitive areas such as waterbodies or inlets.
- Apply only where needed.
- Avoid overspray.



Choosing the Right Product

- Use nontoxic products when possible.
- Use chemicals only as needed.
- Select the appropriate product for the problem.



Leaks & Spills

- Regularly inspect vehicles and application equipment for leaks. Make sure to check hoses and seals.
- Clean up spills immediately.
- Use a drip pan or absorbents for collection.
- Sweep up dry material.

Report Pollution & Illegal Dumping!

Be our eyes—look for and report signs of water pollution. Signs include odor, an oily sheen on the water's surface, colored or cloudy water, dead or dying fish, and excess trash. Dispose of hazardous materials properly. Report spills and issues to



[City Logo]

DO YOUR PART

KEEP POLLUTION OUT OF STORM DRAINS & WATERWAYS

PARKS & GROUND MAINTENANCE: SOIL & DEBRIS MANAGEMENT



Clippings & Trimmings

- Mow grass as high as possible. Leave clippings on the lawn, out of roadways.
- Sweep or blow clippings and trimmings onto the grass or compost them.



Compost & Mulch

- Use compost as a soil amendment, or shred leaves and add to flower beds as mulch.



Storm Drain Inlets

- Remove litter and debris from inlets.
- Gather clippings and other debris, and dispose of them properly, not down the storm drain.



Soil Management

- Limit soil erosion.
- For bare areas, plant vegetation.
- For landscaped areas, use mulch or matting.

Report Pollution & Illegal Dumping!

Be our eyes—look for and report signs of water pollution. Signs include odor, an oily sheen on the water's surface, colored or cloudy water, dead or dying fish, and excess trash. Dispose of hazardous materials properly. Report spills and issues to



[City Logo]

DO YOUR PART

KEEP POLLUTION OUT OF STORM DRAINS & WATERWAYS

SOIL & EROSION CONTROL



Recovered Soil

- Soil may be used on site as fill or stockpiled for another land application.



Stockpiles

- Locate stockpiles out of the street and away from flowing water or runoff.
- Capture sediment using appropriate methods.
- Cover soil and sand stockpiles to prevent erosion.



Exposed Soil

- Apply perennial grass seed to prevent erosion.
- Protect channels by using turf reinforcement mats until vegetation is established.



Erosion & Sediment Control

- Use erosion control methods such as erosion control blankets, vegetation, or mulching.
- Use sediment control methods such as mulch berms or silt fence.

Report Pollution & Illegal Dumping!

Be our eyes—look for and report signs of water pollution. Signs include odor, an oily sheen on the water's surface, colored or cloudy water, dead or dying fish, and excess trash. Dispose of hazardous materials properly. Report spills and issues to



[City Logo]

DO YOUR PART

KEEP POLLUTION OUT OF STORM DRAINS & WATERWAYS

SOLID WASTE VEHICLE OPERATION



Leaks & Spills

- Check vehicle frequently for leaking fluids. Notify supervisor of leaks.
- If a leak occurs, take steps to stop the leak if possible. Contain the leak using absorbents.
- Immediately clean up spills.



Malfunctioning Equipment

- Report any malfunctioning equipment to supervisors.



Washing Vehicles

- Wash vehicles in bays where wash water either drains to the sanitary sewer system or is collected and recycled.



Hopper Drain

- Make sure that hopper drain plugs are always sealed during collection.

Report Pollution & Illegal Dumping!

Be our eyes—look for and report signs of water pollution. Signs include odor, an oily sheen on the water's surface, colored or cloudy water, dead or dying fish, and excess trash. Dispose of hazardous materials properly. Report spills and issues to



[City Logo]

DO YOUR PART

KEEP POLLUTION OUT OF STORM DRAINS & WATERWAYS

SPILLS

SDS

Safety Data Sheet



Revision : Apr-27

CETAMINE F 365

1 IDENTIFICATION OF THE SUBSTANCE OR MIXTURE AND OF THE SUPPLIER

Product Name:	CETAMINE F 365
Product Use:	Corrosion inhibitor for water system
Manufacturer:	Kurita America, Inc. 16850 Diana Lane, Suite B 104, Houston, Texas 77058
Contact:	Chemical Group
Phone:	281-998-3900
FAX:	281-998-3903
Emergency Telephone:	CHEMTREC (Health/ Transport/ Regulatory) 1-800-424-9300 1-800-424-8802

2 HAZARDS IDENTIFICATION

Classification:	Corrosive liquid, Hazardous mixture
-----------------	-------------------------------------



Instructions & Procedures

- Follow cleanup instructions specified on the label or safety data sheet (SDS) and established procedures.
- Contact supervisors with questions.

Containment

- Isolate and stop the leak if possible.
- Collect liquid spills with a drip pan or absorbents.
- Protect inlets if spills may enter a storm drain.
- Cover a powder spill with plastic sheeting to keep it from spreading.



Cleanup

- For liquid spills: Use absorbents.
- For all spills: Don't hose down the spill.
- Notify proper personnel to clean up hazardous spills.



Disposal

- If spilled dry material is usable, put it in the original or properly marked container.
- Otherwise, follow proper disposal procedures.

Report Pollution & Illegal Dumping!

Be our eyes—look for and report signs of water pollution. Signs include odor, an oily sheen on the water's surface, colored or cloudy water, dead or dying fish, and excess trash. Dispose of hazardous materials properly. Report spills and issues to



[City Logo]

DO YOUR PART

KEEP POLLUTION OUT OF STORM DRAINS & WATERWAYS

STREET MAINTENANCE: PAVEMENT REPAIR



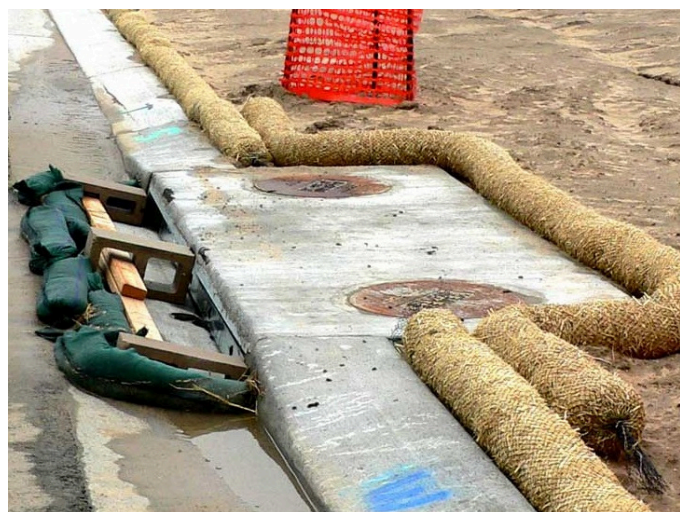
Saw-Cutting Operations

- Vacuum slurry and cuttings while working.
- Dispose of slurry according to established procedures.
- Avoid dry cutting when possible and monitor wind conditions. Dust must be contained when dry cutting.



Asphalt Stockpiles

- Locate stockpiles on a paved surface.
- Cover the stockpiles to prevent contact with rain.



Stormwater Protection

- Protect inlets while working.
- Use appropriate erosion and sediment control methods.
- Inspect control methods as needed.



Asphalt Patching

- Mix only the necessary amount.
- Use biodegradable products rather than diesel.
- Sweep up and properly dispose of all spent material.

Report Pollution & Illegal Dumping!

Be our eyes—look for and report signs of water pollution. Signs include odor, an oily sheen on the water's surface, colored or cloudy water, dead or dying fish, and excess trash. Dispose of hazardous materials properly. Report spills and issues to



[City Logo]

DO YOUR PART

KEEP POLLUTION OUT OF STORM DRAINS & WATERWAYS

WATER MAIN REPAIR / DEWATERING



Stormwater Protection

- Use appropriate erosion and sediment control methods.
- Protect inlets while dewatering for sediment removal.



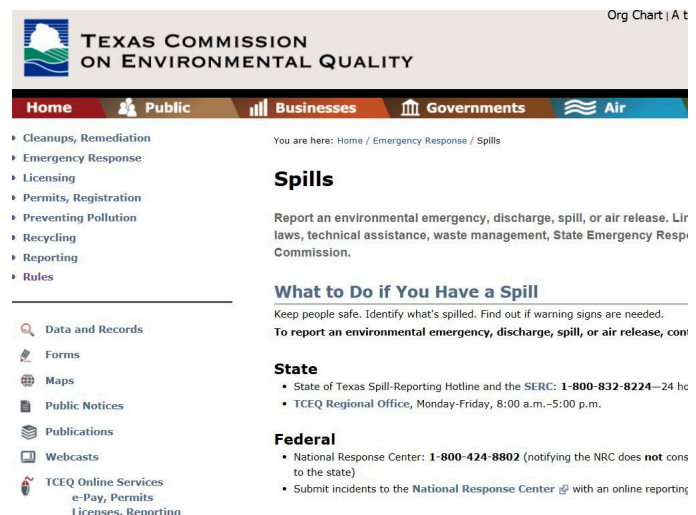
Dechlorination

- Potable water releases must be dechlorinated.



Cleanup

- At the end of the discharge event, dechlorination agents must be removed.
- Clean up sediment from the street and inlet protection.
- Use a street sweeper if needed.
- Do not wash sediments down the storm drain.



Reporting

- Report spills, accidental discharges, and fish kills to supervisors immediately.
- Supervisors will report appropriate spills to TCEQ within 24 hours and will report fish kills to TCEQ and TPWD immediately.

Report Pollution & Illegal Dumping!

Be our eyes—look for and report signs of water pollution. Signs include odor, an oily sheen on the water's surface, colored or cloudy water, dead or dying fish, and excess trash. Dispose of hazardous materials properly. Report spills and issues to



[City Logo]