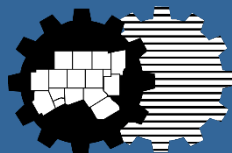
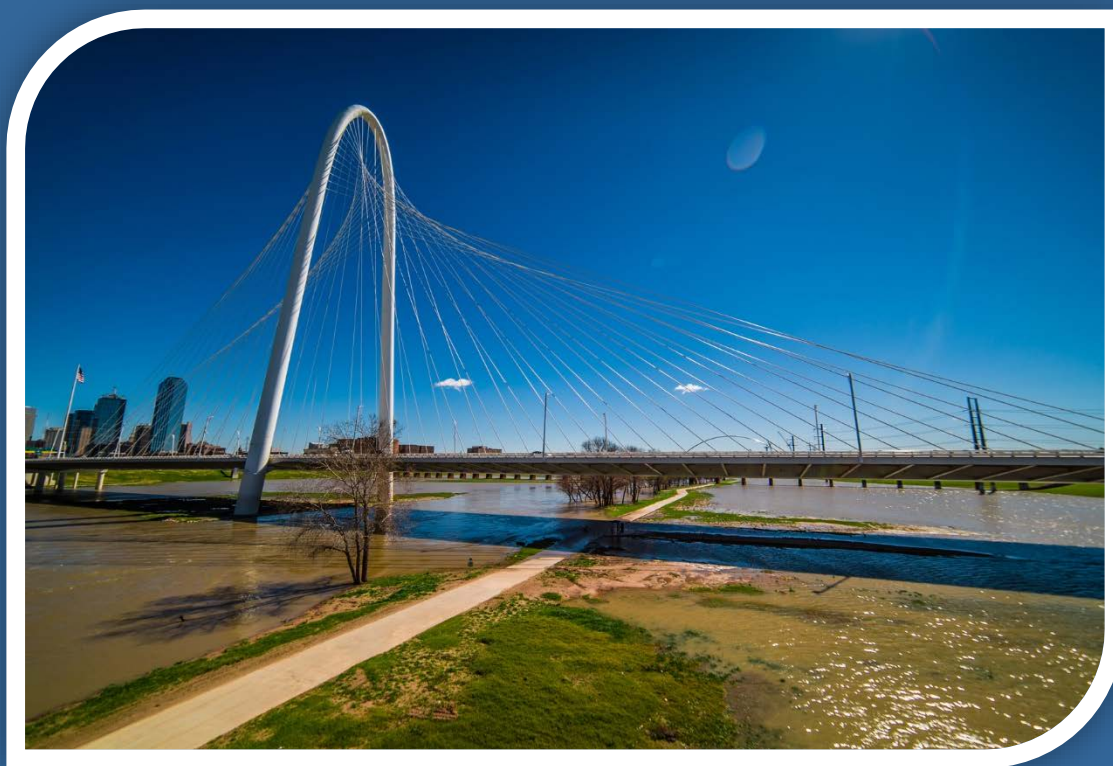


2017 Update to the  
**Water Quality Management Plan**  
for the NCTCOG Region



Produced by the North Central Texas Council of Governments  
June 2017

[www.nctcog.org/WaterResources](http://www.nctcog.org/WaterResources)

*This document has been prepared by the North Central Texas Council of Governments Environment and Development Department on behalf of the Texas Commission on Environmental Quality, Contract 582-17-70169. The work that provided the basis for this publication was supported by funding under an award with the Texas Commission on Environmental Quality and U.S. Environmental Protection Agency. The substance and findings of the work are dedicated to the public. The author and publisher are solely responsible for the accuracy of the statement and interpretations contained in this publication. Such interpretations do not necessarily reflect the view of the State.*

## Table of Contents

Acknowledgements.....	3
Acronyms.....	5
Figures and Tables.....	7
Water Quality Management Plan Background .....	8
Population Estimates and Projections .....	10
Recreational Use-Attainability Analysis Studies.....	12
TPDES Permitted Dischargers in the NCTCOG Region .....	14
NCTCOG Region Water Quality Overview.....	15
Watershed Protection Plans .....	17
Total Maximum Daily Load Implementation Plan.....	19
NCTCOG Region Wastewater System Overview .....	21
NCTCOG Region Wastewater Treatment Plants .....	22
Sanitary Sewer Overflows in the NCTCOG Region .....	23
Clean Water State Revolving Fund Items in the NCTCOG Region.....	24
NCTCOG Region Water Services Areas.....	25
North Central Texas Water Resources Report.....	26
Appendices.....	31

## Acknowledgements

### North Central Texas Council of Governments (NCTCOG) Executive Board, 2016 – 2017

Lissa Smith  
President  
Mayor Pro-Tem  
City of Plano

Tom Lombard  
Vice President  
Councilmember  
North Richland Hills

Kevin Strength  
Secretary-Treasurer  
Mayor  
Waxahachie

John Horn  
Past President  
County Judge  
Hunt County

Bruce Archer  
Councilmember  
City of Mesquite

J.D. Clark  
County Judge  
Wise County

Kelly Allen Gray  
Councilmember  
City of Fort Worth

Clay Jenkins  
County Judge  
Dallas County

Lee Kleinman  
Council Member  
City of Dallas

Dan McClendon  
Mayor Pro Tem  
City of Burleson

Bobbie Mitchell  
Commissioner  
Denton County

Keith Self  
County Judge  
Collin County

Ray Smith  
Mayor  
Town of Prosper

Chris Watts  
Mayor  
City of Denton

Kathryn Wilemon  
Councilmember  
City of Arlington

B. Glen Whitley  
County Judge  
Tarrant County

Bruce Wood  
County Judge  
Kaufman County

Representative Ron Simmons  
Member of the Texas Legislature  
Ex. Officio, Nonvoting Member

## **NCTCOG Water Resources Council, 2016 – 2017**

Ron McCuller  
Chair  
Public Works Director  
City of Grand Prairie

Sebastian “Buster” Fichera  
Assistant Director, Water  
Department  
City of Fort Worth

Larry Patterson  
Deputy Executive Director  
Upper Trinity Regional Water  
District

Wayne Owen  
Vice Chair  
Planning Director  
Tarrant Regional Water District

Tim Fisher  
Water Utilities Division Manager  
City of Denton

Zachary Peoples  
Assistant Director – Wastewater  
Operations  
City of Dallas

Fiona Allen  
Northern Regional Manager  
Trinity River Authority

Gabe Johnson  
Director of Engineering and Public  
Works  
City of Celina

Jody Puckett  
Director, Water Utilities  
City of Dallas

Susan Alvarez  
Assistant Director – Floodplain &  
Drainage Management  
City of Dallas

Terry Kelley  
General Manager  
Johnson County Special Utility  
District

Todd Reck  
Water Utilities Director  
City of Irving

Glenn Clingenpeel  
Manager, Planning and  
Environmental Services  
Trinity River Authority

Wes Kucera  
Managing Director of Water and  
Wastewater  
City of Garland

Craig Schkade  
Senior Development Manager  
Hillwood

Craig M. Cummings  
Assistant Director of Water  
Utilities  
City of Arlington

Donald Magner  
Assistant City Manager, Director of  
Community Services  
City of Richardson

Jason Shroyer  
Assistant Director, Infrastructure  
and Operation Systems  
Town of Addison

Mike Curtis  
Managing Director of  
Development Services  
City of North Richland Hills

Larry McDaniel  
General Manager  
Dallas County Park Cities Municipal  
Utility District

Elizabeth Turner  
Environmental Services Officer  
North Texas Municipal Water  
District

Grace Darling  
Member  
Tarrant Coalition of  
Environmental Awareness

Kevin Mercer  
General Manager  
Denton County Fresh Water Supply

Stacy Walters  
Regulatory Environmental  
Coordinator  
City of Fort Worth

David Fain  
Director of Public Works  
City of Aledo

Michael Nieswiadomy  
Professor of Economics  
University of North Texas

James Whitt  
Assistant Director of Public Works  
City of Euless

## Acronyms

AU	Assessment Unit
AMI	Advanced Metering Infrastructure
BRA	Brazos River Authority
CDC	Corridor Development Certificate
CWA	Clean Water Act
CWSRF	Clean Water State Revolving Fund
DMR	Discharge Monitoring Report
DWU	Dallas Water Utilities
ECHO	Enforcement and Compliance History Online
EPA	Environmental Protection Agency
FOG	Fats, Oils, and Grease
FWSD	Fresh Water Supply District
GPCD	Gallons per Capita Daily
iSWM	<i>integrated</i> Stormwater Management
I-Plan	Implementation Plan
LID	Levee Improvement District
MGD	Million Gallons per Day
MMD	Municipal Management District
MPA	Metropolitan Planning Area
MUD	Municipal Utility District
MS4	Municipal Separate Storm Sewer System
NCTCOG	North Central Texas Council of Governments
NPDES	National Pollutant Discharge Elimination System
NRCS	Natural Resources Conservation Service
NTMWD	North Texas Municipal Water District
OSSF	Onsite Sewage Facility
OTH	Other
POTW	Publicly Owned Treatment Works
RA	River Authority
REF	Regional Ecosystem Framework
RIS	Research and Information Services Department
RUAA	Recreational Use Attainability Analysis
SSO	Sanitary Sewer Overflow
SSOI	Sanitary Sewer Overflow Initiative
SUD	Special Utility District
TCEQ	Texas Commission on Environmental Quality
TMDL	Total Maximum Daily Load
TPDES	Texas Pollution Discharge Elimination System
TRA	Trinity River Authority
TRWD	Tarrant Regional Water District
TSSWCB	Texas State Soil Water Conservation Board
TWDB	Texas Water Development Board
TWRI	Texas Water Resources Institute
UAA	Use Attainability Analysis
USGS	U.S. Geologic Survey
UTRWD	Upper Trinity Regional Water District
WATER	Wastewater and Treatment Education Roundtable

WCID	Water Control and Improvement District
WID	Water Improvement District
WQMP	Water Quality Management Plan
WPG	Water Planning Group
WPP	Watershed Protection Plan
WRC	Water Resources Council
WWTP/F	Wastewater Treatment Plant/Facility

## Figures and Tables

Figure 1. NCTCOG Region.....	8
Figure 2. NCTCOG Region River Basins, Watersheds, and Subwatersheds .....	9
Figure 3. Population Estimates for the 16-County NCTCOG Region, 2010 - 2017 .....	10
Figure 4. 2017 Population Estimates for the NCTCOG Region.....	11
Figure 5. TPDES Permitted Dischargers in the NCTCOG Region.....	14
Figure 6. 2014 Texas Integrated Report - Impaired Water Bodies within the NCTCOG Region .....	15
Figure 7. Watershed Protection Plans in the NCTCOG Region .....	17
Figure 8. TMDL I-Plan Area and Impaired Water Bodies .....	19
Figure 9. Wastewater Service Areas in the NCTCOG Region .....	21
Figure 10. Wastewater Treatment Plants in the NCTCOG Region .....	22
Figure 11. Sanitary Sewer Overflows in the NCTCOG Region by Zip Code, 2011 - 2016 .....	23
Figure 12. Water Service Areas in the NCTCOG Region .....	25
Table 1. Existing Population Estimates and Projections by Planning Area in the North Central Texas Region ....	10
Table 2. Core Counties Population Estimates and Projections .....	10
Table 3. Top 12 Cities Experiencing the Largest Percent Population Change in the NCTCOG Region, 2016-2017 .....	11
Table 4. Top 12 Cities Experiencing the Highest Absolute Growth in the NCTCOG Region, 2016-2017 .....	12
Table 5. NCTCOG Region Recreational Use Attainability Analysis Final Outcomes .....	13
Table 6. North Central Texas Watershed Protection Plans Status Update.....	18
Table 7. Clean Water State Revolving Fund Items Conformance Review.....	24



## Water Quality Management Plan Background

The North Central Texas Council of Governments (NCTCOG), as the designated Water Quality Planning agency for the North Central Texas area, is responsible for developing the regional Water Quality Management Plan (WQMP). NCTCOG serves Collin, Dallas, Denton, Ellis, Erath, Hood, Hunt, Johnson, Kaufman, Navarro, Palo Pinto, Parker, Rockwall, Somervell, Tarrant, and Wise Counties (Figure 1). The purpose of this WQMP update is to support current and future planning decisions concerning water quality efforts, wastewater infrastructure development, watershed management, and related issues on both a regional and state level. The WQMP update provides a framework and strategies for water quality, wastewater management, and water supply challenges that contribute to protecting or improving water quality in North Central Texas. The water quality management program also facilitates the review of infrastructure projects to ensure that they are consistent with the regional WQMP.

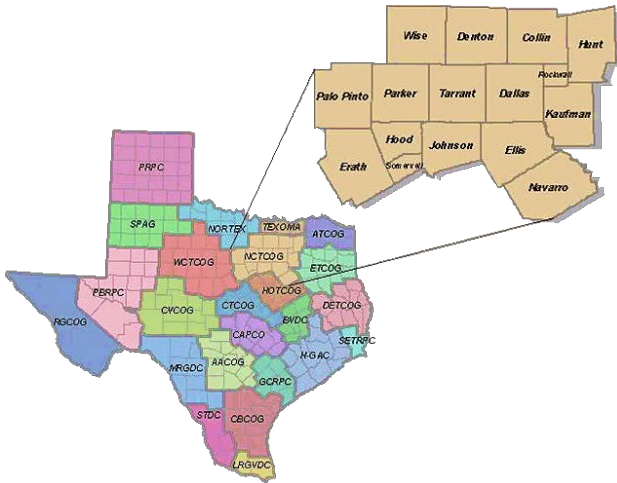


Figure 1. NCTCOG Region

In 1975, NCTCOG was designated by the Governor of Texas as the water quality management planning agency for the North Central Texas region. Protection of water resources and the provision of wastewater services are overseen on a statewide basis by the TCEQ, who relies on NCTCOG for oversight, conformity review, and evaluation of capacity for wastewater services in the North Central Texas region. The water quality management planning process is mandated by the Section 208(a) of the Clean Water Act (CWA) for the purpose of encouraging and facilitating the development and implementation of area-wide waste treatment management plans. Implementation of the act is the responsibility of state and local planning agencies.

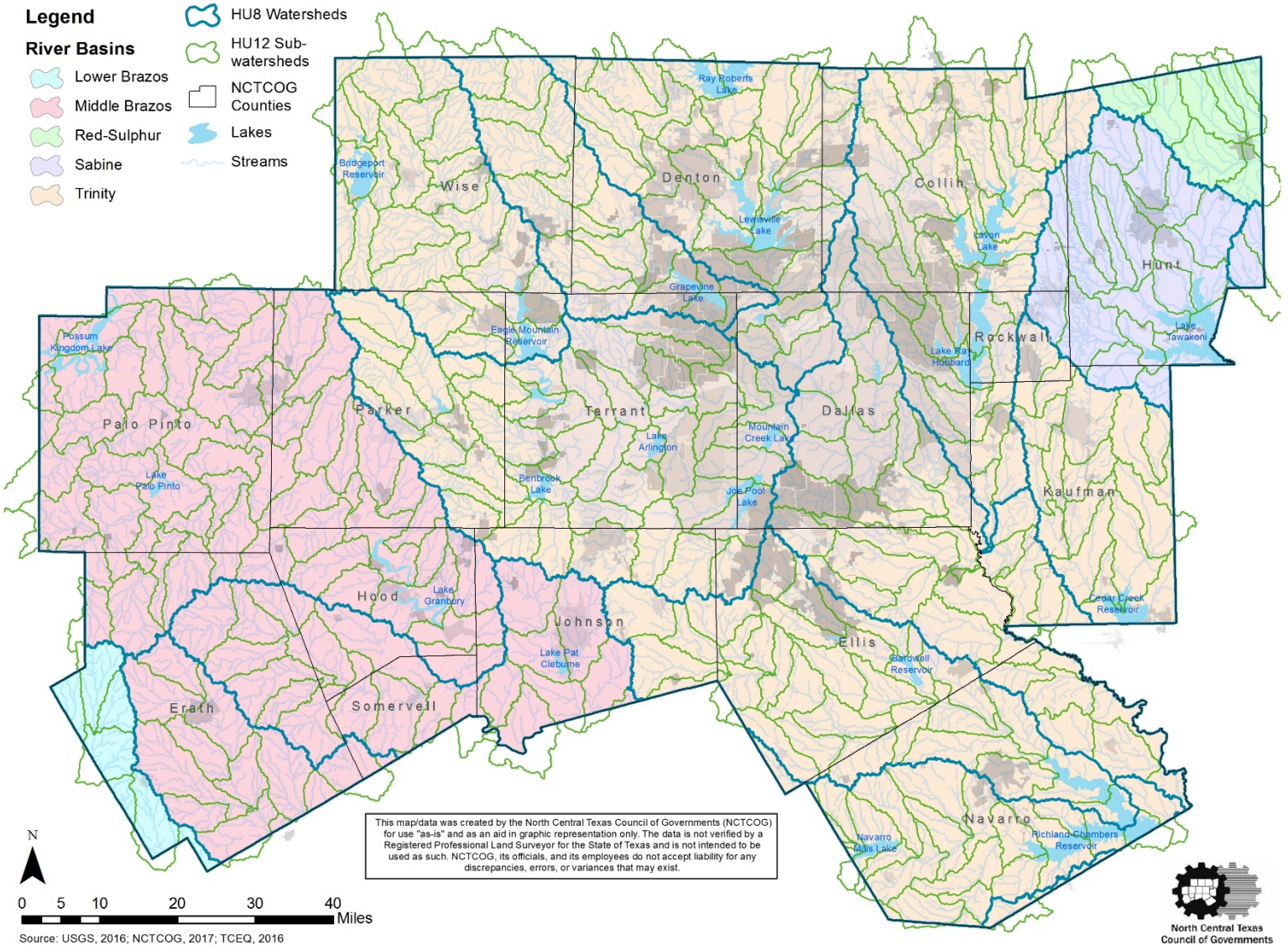
Each WQMP is reviewed by the Water Resources Council (WRC), a committee that advises NCTCOG's Executive Board on technical and policy issues related to water resources matters. A public comment process and public hearing is provided to allow for stakeholder review of the plan and provide opportunity for comments. After the public hearing, public comments are incorporated to produce a final plan which is presented to NCTCOG's Executive Board for adoption. The adopted plan is subsequently submitted to TCEQ for review and approval.

### 2017 Water Quality Management Plan Update

The North Central Texas Council of Governments (NCTCOG), as the designated water quality planning agency for the North Central Texas area, is responsible for the developing the regional Water Quality Management Plan (WQMP). Since developing the first WQMP in 1975, the NCTCOG 16-county region has grown by 4.5 million people. The historical population growth and projected growth has required and will continue to require water resources planning to address water quality, wastewater capacity, and water supply needs. The WQMP is a summary of potential needs and priorities for improving water quality and continuing regional efforts to meet wastewater capacity needs for the expanding population.

The NCTCOG Region is composed of over 330 sub-watersheds that include a myriad of diverse land uses working to support the growing population of the NCTCOG region (Figure 2). Entities across North Texas work to maintain and improve water resources with the development of management plans to help meet future needs. The data and information outlined in this 2017 Water Quality Management Plan Update can also found in an interactive mapping tool called the 2017 WQMP Map Journal. Please visit the [interactive mapping tool](#) for more information.

Figure 2. NCTCOG Region River Basins, Watersheds, and Subwatersheds



## Population Estimates and Projections

The Dallas-Fort Worth region continues to experience high levels of population growth, and forecasts project this trend will continue through 2040. The continual growth in the region is important to agencies tasked with maintaining or improving water quality, providing adequate capacity for wastewater treatment, and ensuring sufficient drinking water supplies.

Several methods of growth analysis are used to establish existing and projected growth trends in the North Central Texas region. NCTCOG's Research and Information Services (RIS) Department produce annual population estimates, and in 2015, developed population and employment projections for 2040 for the 12-county Metropolitan Planning Area (MPA), which can be found in Table 1. The projected population data provides a uniform base for infrastructure planning and resource allocation in the MPA. The Texas Water Development Board (TWDB) also produces population projections, which NCTCOG uses to measure population

Figure 3. Population Estimates for the 16-County NCTCOG Region, 2010 - 2017

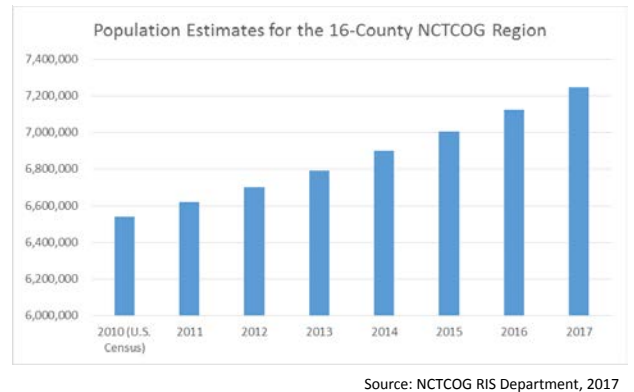


Table 1. Existing Population Estimates and Projections by Planning Area in the North Central Texas Region

NCTCOG Estimated and Projected Populations by Planning Area					
	2000 U.S. Census April 1	2010 U.S. Census April 1	2016 NCTCOG Estimate January 1	2017 NCTCOG Estimate January 1	2040 Population Projection
12-County MPA*	5,197,317	6,417,724	6,992,700	7,115,250	10,676,844
16-County NCTCOG Region	5,309,277	6,539,950	7,123,170	7,246,350	-

\*The 12-County Dallas-Fort Worth Metropolitan Planning Area (MPA) consists of: Collin, Dallas, Denton, Ellis, Hood, Hunt, Johnson, Kaufman, Parker, Rockwall, Tarrant, and Wise Counties.

Source: U.S. Census Bureau; NCTCOG Population Estimates and Projections

The NCTCOG region experiences considerable annual population change. Analysis of where existing growth is occurring within the region is important to understand growth patterns to assist with future planning needs. To assist with this effort, a list of NCTCOG city population estimates for 2010 - 2017 can be found in Appendix A. Additionally, the map seen in Figure 4 shows the top 12 cities with the highest percent change (red) and largest absolute growth (blue). Percent change in population shows the relative change in size of a population from 2016 to 2017, and tends to occur in smaller cities. Absolute growth indicates the actual number of people the population increased (or decreased) from 2016 to 2017. Growth values for the NCTCOG region can be seen in Table 3 and Table 4.

As seen in Figure 4, the four core counties – Collin, Dallas, Denton, and Tarrant Counties – are experiencing significant population growth as compared to the rest of the NCTCOG Region. These counties are responsible for an estimated 86% of the population growth in 2017 and will continue to receive increases in population through 2040, according to the NCTCOG RIS 2040 population projections (values available in Table 2).

Table 2. Core Counties Population Estimates and Projections

County	2010 County Population Estimate	2017 County Population Estimate	2040 County Population Projection
Collin	782,341	932,530	1,560,421
Dallas	2,383,790	2,502,270	3,357,469
Denton	662,614	814,560	1,241,681
Tarrant	1,809,034	1,966,440	3,084,649

Source: U.S. Census Bureau, 2010; NCTCOG Population Estimates and Projections

Figure 4. 2017 Population Estimates for the NCTCOG Region

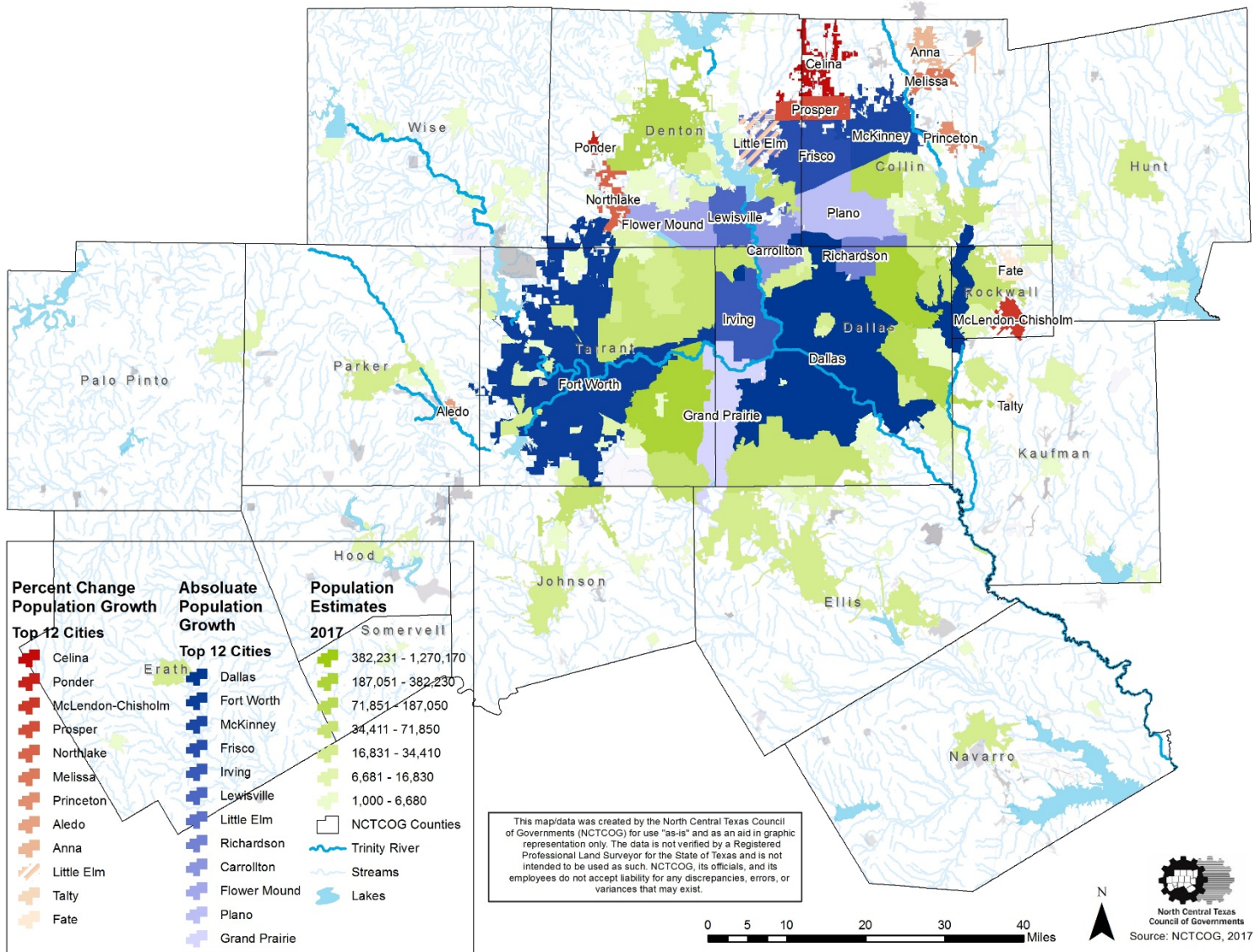


Table 3. Top 12 Cities Experiencing the Largest Percent Population Change in the NCTCOG Region, 2016-2017

City	2016 Population	2017 Population	Percent Population Growth (2016-2017)
Celina	8,650	10,310	19.2%
Ponder	1,560	1,780	14.1%
McLendon-Chisholm	2,450	2,780	13.5%
Prosper	17,790	20,160	13.3%
Northlake	2,660	3,010	13.2%
Melissa	7,920	8,850	11.7%
Princeton	8,480	9,460	11.6%
Aledo	3,530	3,930	11.3%
Anna	11,320	12,390	9.5%
Little Elm	35,050	38,250	9.1%
Talty	2,120	2,310	9.0%
Fate	10,470	11,380	8.7%

Source: NCTCOG Population Estimates, 2017

Table 4. Top 12 Cities Experiencing the Highest Absolute Growth in the NCTCOG Region, 2016-2017

City	2016 Population	2017 Population	Absolute Population Growth (2016-2017)
Dallas	1,257,730	1,270,170	12,400
Fort Worth	806,380	815,430	9,050
McKinney	161,470	169,710	8,240
Frisco	153,520	161,400	7,880
Irving	231,040	234,710	3,670
Lewisville	100,400	103,640	3,240
Little Elm	35,050	38,250	3,200
Richardson	104,300	107,400	3,100
Carrollton	127,980	130,820	2,840
Flower Mound	69,070	71,850	2,780
Plano	274,960	277,720	2,760
Grand Prairie	184,620	187,050	2,430

Source: NCTCOG Population Estimates, 2017

### Recreational Use-Attainability Analysis Studies

The Texas Commission on Environmental Quality (TCEQ) is responsible for establishing and enforcing water quality standards for Texas waterways. The TCEQ employs several tools to define appropriate water quality standards for each stream segment across the state. One tool, the Use Attainability Analysis (UAA), reevaluates the designated (or presumed) use of a water body. An UAA would be performed if a water body's water quality standard is questioned as appropriate for local conditions. Analysis of use is based on the physical and flow characteristics of the stream; supporting information from individuals and organizations with firsthand knowledge; and historical and existing patterns of use (TCEQ, 2016). The most common UAA is the Recreational Use-Attainability Analysis (RUAA), which determines what category of recreational use is appropriate for a particular water body. There are four categories:

**Primary Contact Recreation:** Activities that are presumed to involve significant risk of ingestion of water

**Secondary Contact Recreation 1:** Activities that commonly occur but have limited body contact, incidental to shoreline activity

**Secondary Contact Recreation 2:** Activities with limited body contact, incidental to shoreline activity

**Non-contact Recreation:** Activities that do not involve a significant risk of water ingestion, such as those with limited body contact, incidental to shoreline activity.

RUAA studies within the NCTCOG Region and can be found in Table 5. Performing a RUAA has the potential to change the designated water quality standard of a waterway, which could cause a waterway to achieve attainment for certain pollutants, and no longer be considered impaired. This has been the outcome of 2 RUAA studies in Erath County for Indian Creek and Walnut Creek, and 1 RUAA in Wise County for Big Sandy Creek (TCEQ, 2017). Stream segments with pending outcomes are still undergoing public comment and Environmental Protection Agency (EPA) approval of the TCEQ recommendations.

Table 5. NCTCOG Region Recreational Use Attainability Analysis Final Outcomes

Basin	Segment (SEG_ID)	Segment Description	Original Designated Use	Final Outcome (as of May 2017)	When RUAA Was Conducted
Brazos	1226K	Little Daffau Creek	Primary Contact Recreation	Pending	Summer 2009
Brazos	1226E	Indian Creek	Primary Contact Recreation	Revised designated use to Secondary Contact Recreation 1 <sup>b</sup>	Summer 2009
Brazos	1226F	Sims Creek	Primary Contact Recreation	Pending	Summer 2009
Brazos	1255A	Goose Branch	Primary Contact Recreation	Pending	Summer 2009
Brazos	1255B	North Fork Upper North Bosque	Primary Contact Recreation	Pending	Summer 2009
Brazos	1255C	Scarborough Creek	Primary Contact Recreation	Pending	Summer 2009
Brazos	1255F	Unnamed Tributary of Scarborough Creek	Primary Contact Recreation	Pending	Summer 2009
Brazos	1221F	Walnut Creek	Primary Contact Recreation	Revised designated use to Secondary Contact Recreation 2 <sup>c</sup>	Summer 2009
Brazos	1221A	Resley Creek	Primary Contact Recreation	Pending	Summer 2009
Brazos	1255E	Unnamed Tributary of Goose Branch	Primary Contact Recreation	Pending	Summer 2009
Brazos	1255G	Woodhollow Branch	Primary Contact Recreation	Pending	Summer 2009
Brazos	1223A	Armstrong Creek	Primary Contact Recreation	Pending	Summer 2009
Brazos	1255	Upper North Bosque River	Primary Contact Recreation	Pending	Summer 2009
Brazos	1226H	Alarm Creek	Primary Contact Recreation	Pending	Summer 2012
Brazos	1226M	Little Green Creek	Primary Contact Recreation	Pending	Summer 2012
Brazos	1255I	Dry Branch	Primary Contact Recreation	Pending	Summer 2012
Brazos	1204A	Camp Creek	Primary Contact Recreation	Pending	Summer 2012
Sabine	0507G	South Fork of Sabine River	Primary Contact Recreation	Pending	Summer 2010 and 2011
Trinity	0810	West Fork Trinity River Below Bridgeport Reservoir	Primary Contact Recreation	Retained designated use of Primary Contact Recreation <sup>a</sup>	Summer 2010
Trinity	0810A	Big Sandy Creek	Primary Contact Recreation	Revised designated use to Secondary Contact Recreation 1	Summer 2009
Trinity	0810C	Martin Branch	Primary Contact Recreation	Retained designated use of Primary Contact Recreation	Summer 2010
Trinity	0838C	Walnut Creek	Primary Contact Recreation	Pending	Summer 2010

<sup>a</sup> Primary Contact Recreation has a geometric mean of 126 colonies of *E. coli*/100 mL

<sup>b</sup> Secondary Contact Recreation 1 has a geometric mean of 630 colonies of *E. coli*/100 mL

<sup>c</sup> Secondary Contact Recreation 2 has a geometric mean of 1030 colonies of *E. coli*/100 mL

## TPDES Permitted Dischargers in the NCTCOG Region

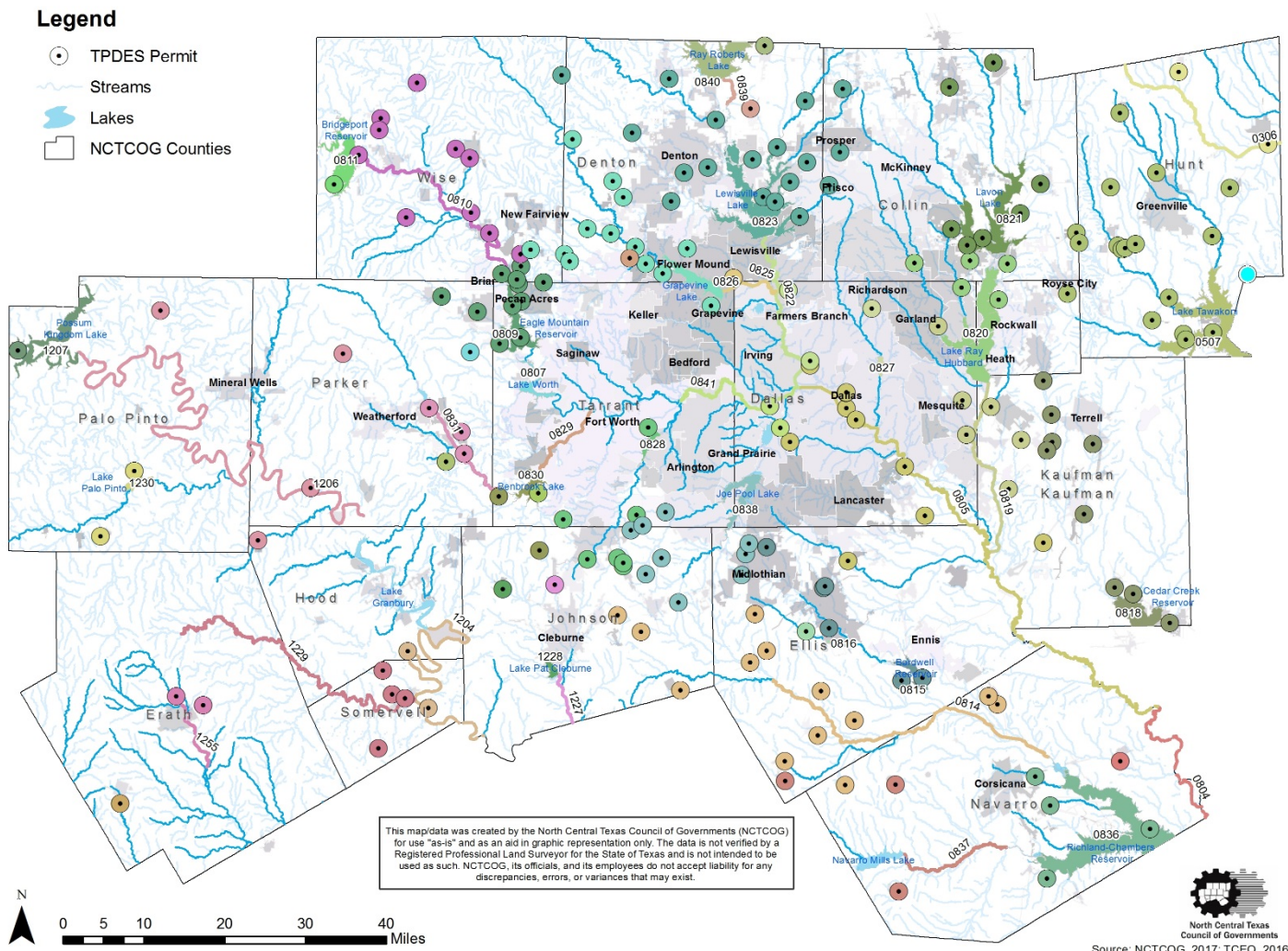
Local, state, and federal regulations require pretreatment programs as part of the National Pollutant Discharge Elimination System (NPDES), which is administered at the state level by TCEQ's Texas Pollution Discharge Elimination System (TPDES) program. The TPDES program controls water pollution by regulating point sources that discharge pollutants into waterways. Any industrial, municipal, or other facility must obtain a TPDES permit if their discharge goes directly into surface waters. This includes but is not limited to wastewater treatment plants.

NCTCOG developed a database of TPDES permits, compiling permit renewals and major and minor amendments occurring in the NCTCOG Region. The database maintains records for each permit, providing pertinent information, including: permit applicant; permit location; any permit modifications; permitted flow (gallons per day); and the outfall path of the permitted discharge. Information on the map indicates the most recent iteration of received TPDES wastewater permits, color coding them to the water body receiving the permitted discharge.

The map provides a snapshot of permitted discharge within the region. This information can be used in planning for future capacity and help identify priority water bodies or watersheds that may need preventative action in order to maintain designated water quality standards.

For more information about each TPDES permit, the TPDES database can be found in Appendix B.

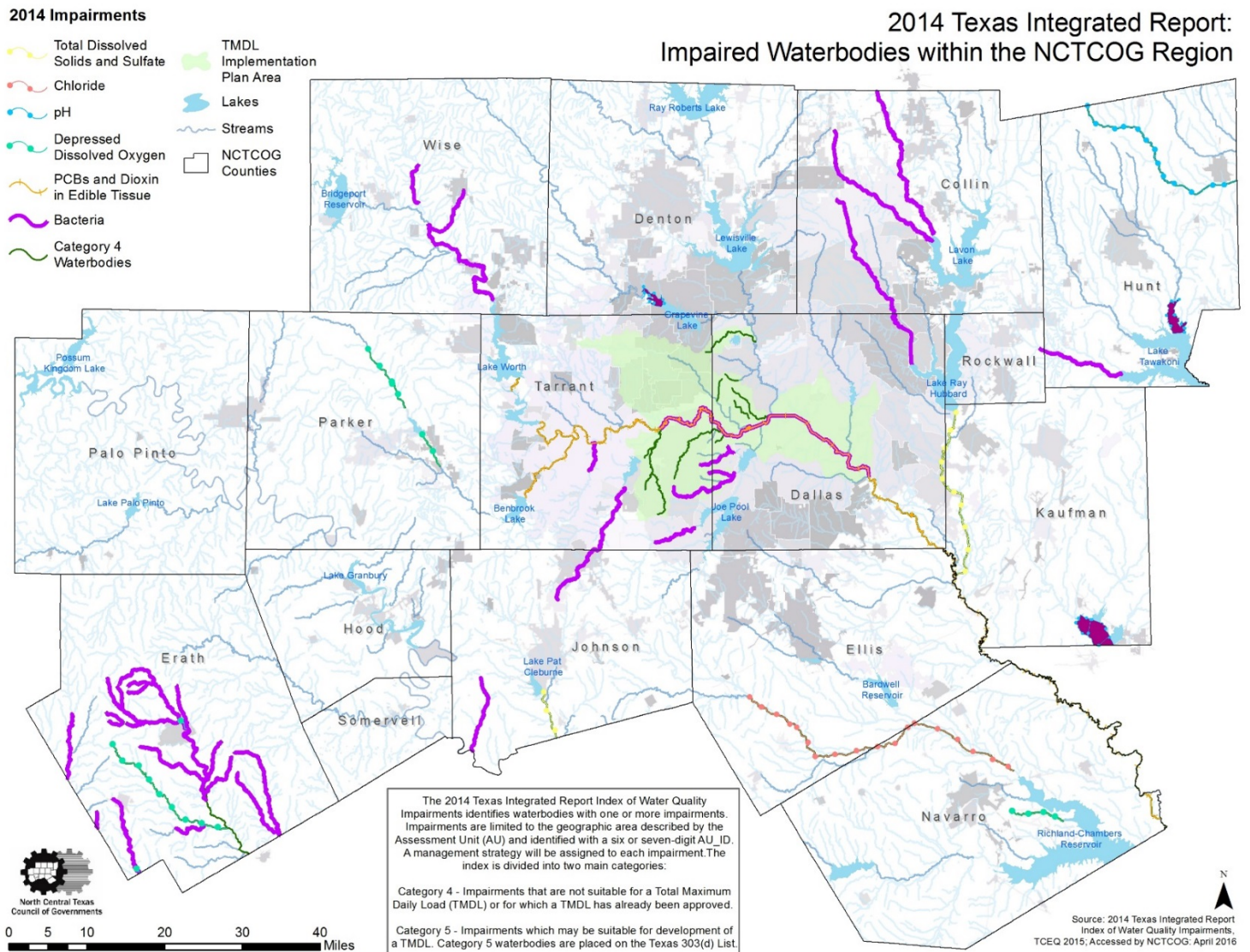
Figure 5. TPDES Permitted Dischargers in the NCTCOG Region



## NCTCOG Region Water Quality Overview

The water quality in the NCTCOG Region is important to the health, safety, and welfare of residents, ecosystems, and long-term economic growth. As of 2014, the NCTCOG Region has 50 water bodies that are in non-attainment and listed on the Texas 303(d) List. The Texas 303(d) List is comprised of water bodies that are labeled as category 5, meaning the water bodies have or will have planned management strategies implemented as an effort to improve the water quality to meet the designated water quality standard.

Figure 6. 2014 Texas Integrated Report - Impaired Water Bodies within the NCTCOG Region



The map displays the 2014 Texas 303(d) List of impaired surface water bodies by pollutant. Impairments are limited to the geographic area described by the Assessment Unit (AU) and identified with a six or seven-digit AU\_ID. 303(d) water bodies are to have a management strategy assigned to address the impairments. Specific strategies may include: TMDL development; water quality standards evaluation; or additional monitoring. Water bodies are removed from the Texas 303(d) List for any one of the following seven reasons:

**Standards are met.** Additional monitoring data demonstrate that water body meets applicable water quality standards



**Error in listing.** Errors in the data or procedures used to list the water body invalidate the original basis for listing

**New procedures used.** Procedures used by the state to assess water quality monitoring data are routinely improved and revised. Data set for a listed water body may be reassessed with more accurate procedures and be found to attain the standard or criteria. The strength of the data set and quality of the water must also meet the requirement for delisting using revised methods.

**New standards.** Water quality standards and criteria have been revised, and listed water body attains the new standards or criteria.

**TMDL approval.** The EPA approves a TMDL designed to attain water quality standards for the water body (Category 4a).

**Water body expected to meet.** Based on water quality controls in place (other than a TMDL), attainment of the water quality standards is expected in the near future (Category 4b).

**Impairments not caused by a pollutant.** New information demonstrates that the impairment is not caused by a pollutant, and that water quality conditions cannot be changed by the allocation and control of pollutants through the TMDL process (Category 4c).

NCTCOG and entities across the region actively engage in pollution prevention strategies to reduce the amount of pollution entering into the regional waterways. These activities help improve the water quality throughout the region and support efforts working towards removing water bodies from the Texas 303(d) list. Such strategies include:

- Municipal separate storm sewer (MS4) operators (such as cities and transit authorities) are required to reduce pollution that could contaminate stormwater and run-off into local waterways. NCTCOG coordinates the [Regional Stormwater Management Program](#) to engage MS4s to implement regional efforts to achieve the permit requirements for their individual permits.
- Entities throughout North Texas have begun the development and implementation of watershed protection plans (WPPs) in an effort to improve and prevent water quality pollution.
- Entities in the Dallas-Fort Worth Metroplex participate in the [TMDL Implementation Plan program](#), which aims to reduce the amount of bacteria entering into the Greater Trinity River and some of its tributaries.
- Volunteer organizations, such as the [Texas Stream Team](#), coordinate citizens to monitor water quality to provide additional information to help cities and other entities recognize waterways being impacted by pollution.

## Watershed Protection Plans

A Watershed Protection Plan (WPP) is a coordinated framework for implementing water quality protection and restoration strategies within a watershed. WPPs holistically address all the sources and causes of impairment to both surface and groundwater resources. Developed and implemented through diverse, well integrated partnership of stakeholders, a WPP assures the long-term health of the watershed and is one of the ways that entities in the NCTCOG region are helping with pollution prevention efforts. As seen in Figure 7, there are seven watershed protection plans under development or implementation in the NCTCOG region. See Table 6 for more information on the current status of each WPP.

Figure 7. Watershed Protection Plans in the NCTCOG Region

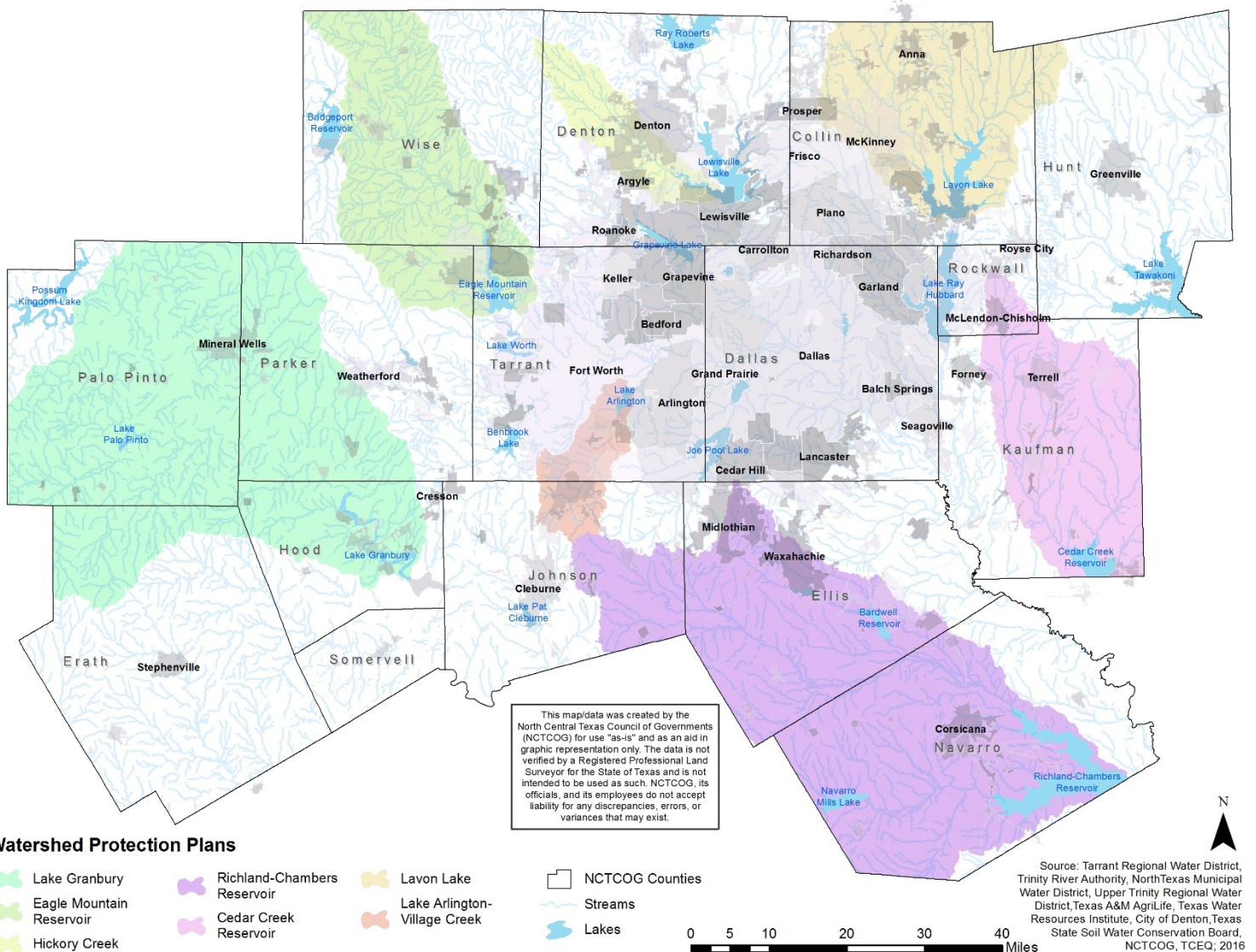


Table 6. North Central Texas Watershed Protection Plans Status Update

Watershed Protection Plan	Pollutant of Concern or Impairment <sup>a</sup>	Location	Partners	Status (as of May 2017)
Lake Arlington-Village Creek	Impaired for bacteria  Of concern for chlorophyll-a	143 square miles from Village Creek headwaters near Joshua in northern Johnson County, extending 35 miles to Lake Arlington in southeastern Tarrant County.	City of Arlington  Trinity River Authority (TRA)  Texas Commission on Environmental Quality (TCEQ)	Data collection commenced in June 2016 and will continue for 12 months. WPP writing is underway and TRA will seek stakeholder feedback and approval of the first three chapters later summer 2017. TRA has initiated the source identification task, utilizing the <b>SELECT</b> analysis tool. The WPP development is on track for completion by August 2018.
Cedar Creek Reservoir	Of concern for chlorophyll-a	1,007 square miles southwest of Dallas, 3 miles northwest of Trinidad on Cedar Creek in the Trinity River Basin in Rockwall, Kaufman, and Henderson Counties.	Tarrant Regional Water District (TRWD)  Texas Water Resources Institute (TWRI)  Texas State Soil Water Conservation Board (TSSWCB)	Alternative strategies for water quality improvement for the Cedar Creek Reservoir watershed were developed. The model estimates show a need for a 35 percent reduction in sediment and nutrient loadings into the reservoir. A Draft WPP was presented to stakeholders and participating entities.
Eagle Mountain Reservoir	Of concern for chlorophyll-a	9,200 acres on the West Fork of the Trinity River, just north of Lake Worth in northwestern Tarrant and southwestern Wise Counties.	Tarrant Regional Water District (TRWD)  Texas Water Resources Institute (TWRI)  Texas State Soil Water Conservation Board (TSSWCB)	Completed the calibration and validation of a water quality model to evaluate water quality improvement needs and strategies for the Eagle Mountain Lake watershed.
Lake Granbury	Of concern for bacteria	Along the Brazos River draining into Lake Granbury in Parker, Palo Pinto, Hood, and Erath Counties.	Brazos River Authority (BRA)  Texas Water Resources Institute (TWRI)	Conducting implementation under 319(h) grant funding.
Hickory Creek	Of concern for bacteria	Extends west from I-35 through the City of Denton, draining to Lake Lewisville in Denton County	City of Denton  Texas Commission on Environmental Quality (TCEQ)	Conducting implementation under 319(h) grant funding.
Lavon Lake	Impaired for bacteria	769 square miles in the Lavon Lake watershed above Lavon Lake in Grayson, Fannin, and Collin Counties.	North Texas Municipal Water District (NTMWD)  Texas A&M AgriLife  Texas State Soil Water Conservation Board (TSSWCB)	Engaging stakeholders via monthly stakeholder meetings, seeking feedback on WPP development.
Richland-Chambers Reservoir	Of concern for chlorophyll-a	Northwest of Richland-Chambers Reservoir in parts of Johnson, Ellis, Hill, Limestone, and Navarro Counties.	Tarrant Regional Water District (TRWD)  Texas A&M AgriLife	Completed the calibration and validation of a water quality model to evaluate water quality improvement needs and strategies for the Richland-Chambers Reservoir watersheds.

<sup>a</sup> When a waterbody is “impaired” it is not meeting its applicable water quality standard. When a waterbody is “of concern” it is at risk of near-nonattainment for its designated use. Pollutant level reflects status of water body at inception of watershed protection plan. Source: TRA; NTMWD; TCEQ; Texas A&M AgriLife; TWRI; City of Denton; TSSWCB; NCTCOG, 2017

## Total Maximum Daily Load Implementation Plan

NCTCOG supports the development and implementation of the Total Maximum Daily Load (TMDL) Implementation Plan (I-Plan) to address bacteria levels in the Greater Trinity River Region (Figure 8). A TMDL measures the amount of pollutant that a stream segment can receive and still maintain the water quality standards for its designated use.

The *Implementation Plan (I-Plan) for 21 Total Maximum Daily Loads for Bacteria in the Greater Trinity River Region* was approved by the TCEQ Commissioners in 2013 and updated in 2017 to include 4 additional TMDLs, Upstream of Mountain Creek Lake. The I-Plan describes strategies that can be taken to reduce the levels of bacteria loading in portions of the Trinity River and its tributaries that are listed as impaired for bacteria in the Texas Integrated Report Index of Water Quality Impairments (which includes the 303d List). The Implementation Plan has outlined strategies to reduce bacteria loading in the following waterways:

- Upper Trinity River (Segment 0805, upper end)
- Elm Fork Trinity River tributaries of Grapevine Creek and Cottonwood Branch (Segments 0822A and 0822B)
- Lower West Fork Trinity River (Segment 0841) and 11 of its tributaries
- Tributaries of Mountain Creek Lake (Segments 0841F, 0841K, 0841N, and 0841V)

Figure 8. TMDL I-Plan Area and Impaired Water Bodies



### Legend

- Bacteria Impaired Segments
- Cottonwood Branch & Grapevine Creek TMDLs
- Lower West Fork TMDLs
- Above Mountain Creek TMDLs
- Upper Trinity TMDLs
- Streams
- Lakes
- Dallas-Fort Worth International Airport
- NCTCOG Counties

This map/data was created by the North Central Texas Council of Governments (NCTCOG) for use "as-is" and as an aid in graphic representation only. The data is not verified by a Registered Professional Land Surveyor for the State of Texas and is not intended to be used as such. NCTCOG, its officials, and its employees do not accept liability for any discrepancies, errors, or variances that may exist.

0 1.75 3.5 7 10.5 14 Miles



Source: NCTCOG, 2017; TCEQ, 2017

The TMDL Coordination Committee, the I-Plan's managing body, is made up of stakeholders within the TMDL area including: local governments, special districts, non-profit organizations, and other interested parties. There are three Technical Subcommittees that convene annually to review and evaluate the efforts underway related to relevant implementation strategies. TMDL Technical Subcommittees make recommendations to the TMDL Coordination Committee on the priority status and efficacy of the implementation efforts underway within the TMDL area. NCTCOG continues to support regional efforts to implement strategies identified in the I-Plan and work with stakeholders to make progress in meeting TCEQ's and the region's goal of reducing bacteria concentrations to within acceptable risk levels for contact recreation.

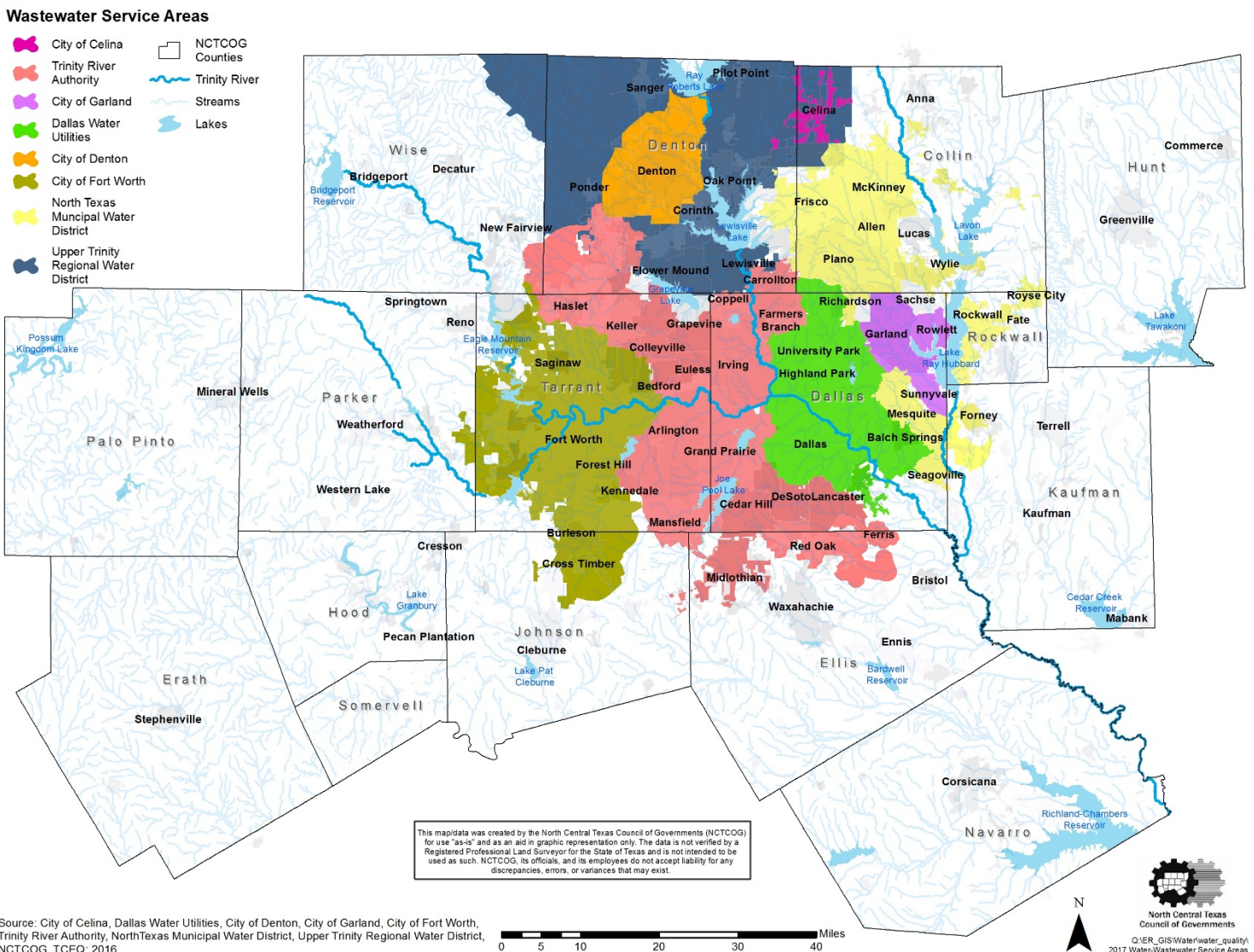
The TMDL Implementation Plan program works annually to initiate and continue efforts for each implementation strategy in the I-Plan. The efforts underway since the inception of the TMDL I-Plan have been outlined in the first annual TMDL Implementation Status Report. To view the report, visit [www.nctcog.org/TMDL](http://www.nctcog.org/TMDL).

## NCTCOG Region Wastewater System Overview

Ensuring adequate capacity to treat wastewater from new residential and commercial development in addition to the existing residents and businesses is a long-term planning need in the NCTCOG region. Wastewater service providers monitor growth trends to ensure their systems address issues such as plant expansions or new infrastructure that might be needed to meet future wastewater demands. Furthermore, several communities in the region have invested in wastewater infrastructure over the past year to upgrade or build new wastewater treatment facilities to treat increasing amounts of wastewater.

Communities located on the perimeter of the urbanized area and rural communities may become more dependent on each other to partner, or engage in existing partnerships, to provide cost efficient wastewater services. For such a densely populated and growing region, the need for adequate treatment services is a crucial component to protecting water quality, and is a priority to the seven wastewater joint system providers and individual wastewater system operators. The joint system providers in the region serve many local governments as members or customers. The Water Resources Council recommends that regional wastewater system providers aim to incorporate new entities into the existing systems, rather than have new systems operate independently. Service area of wastewater systems, as seen in Figure 9, can serve as an indicator of the expanding wastewater capacity within the region.

Figure 9. Wastewater Service Areas in the NCTCOG Region



## NCTCOG Region Wastewater Treatment Plants

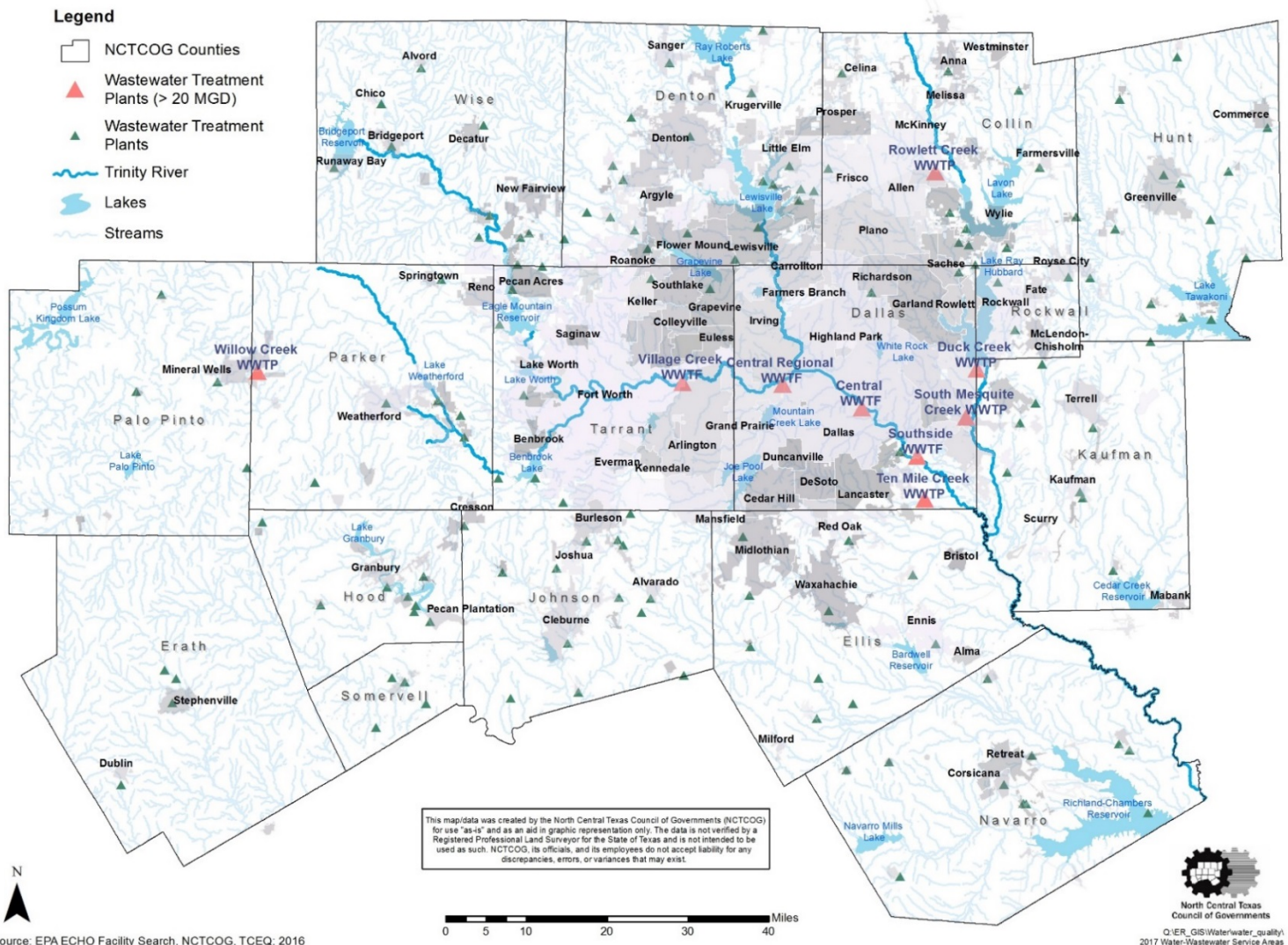
Wastewater service providers operate wastewater treatment plants (WWTPs) as a part of the wastewater system. WWTPs are regulated by TCEQ and are required to acquire TPDES permits for discharges to receiving water bodies. The permit limits are set by the state to avoid pollutant overloads to surface waters.

The TPDES program helps to control discharges of pollutants into surface waters. Every TPDES permittee must submit monthly Discharge Monitoring Reports (DMR) to TCEQ which can be used to assess the monthly and yearly wastewater effluent and discharges of individual WWTPs. There are 111 minor and 44 major WWTPs in the NCTCOG region. WWTPs are designated as minor when the design flow is less than or equal to 1 million gallons per day (MGD). The largest design flow values are found within the urbanized Dallas and Tarrant County.

Details regarding discharge rates and permit compliance data for the 155 major and minor wastewater facilities in the 16-county region can be found in Appendix C. The DMR data obtained from the TCEQ and used by NCTCOG reflects measurements from 2016 (January 2016 – December 2016).

Figure 10 shows the permitted wastewater facilities in the NCTCOG region, highlighting treatment facilities with a facility design flow greater than 20 million gallons a day.

Figure 10. Wastewater Treatment Plants in the NCTCOG Region



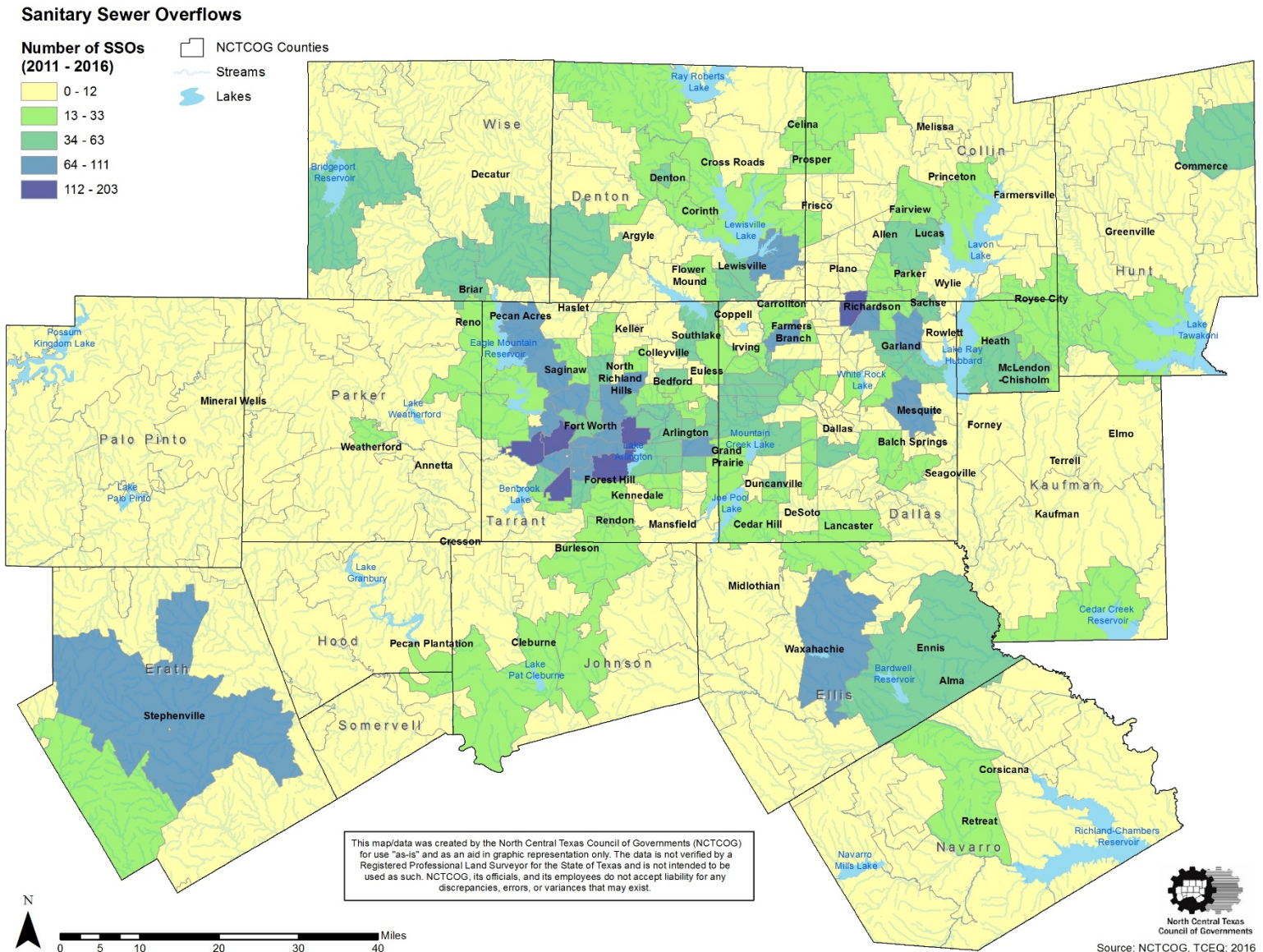
## Sanitary Sewer Overflows in the NCTCOG Region

Sanitary sewer overflows (SSOs) are a type of unauthorized discharge of untreated or partially treated wastewater from a collection system or its components (TCEQ, 2016). SSOs can occur if there is significant inflow/infiltration, if the collection system is poorly operated or maintained, or the collection system lacks adequate capacity to collect or store flows for treatment. Figure 11 indicates the total number of reported SSOs from 2011 to 2016 by zip code in the NCTCOG region.

Infrastructure solutions to address SSOs can be both time consuming and costly to address. The NCTCOG region has recognized that a significant way to minimize the number of SSOs is with education and outreach aimed at the proper disposal of fats, oils, and grease (FOG) which cause blockages in the sewer mains. The Wastewater And Treatment Education Roundtable (WATER) supports a region wide effort to educate the public on FOG and to educate regional entities with trainings and workshops through the [Cease The Grease North Texas](#) initiative.



Figure 11. Sanitary Sewer Overflows in the NCTCOG Region by Zip Code, 2011 - 2016





## Clean Water State Revolving Fund Items in the NCTCOG Region

As the designated water quality management planning agency, NCTCOG is required to undertake 208/201 coordination with the TCEQ. NCTCOG evaluates Clean Water State Revolving Fund (CWSRF) projects that aim to develop and implement wastewater treatment management plans and practices to meet the goals of the Clean Water Act, and to coordinate with the state agency to ensure that plans developed under Section 208 are consistent with companion requirements under Section 201, which relates to facility planning and funding of treatment facilities or infrastructure. The 208/201 coordination activities typically involve examination of facility plans submitted as part of funding applications. NCTCOG compares the facility planning information with regional goals and plans included as part of the current amended area-wide Water Quality Management Plan (WQMP).

NCTCOG performs a conformance review and provides the project plans to the Water Resources Council (WRC) for expert input. NCTCOG compiles the feedback and submits responses to TCEQ for each project, acknowledging whether they were consistent with the current WQMP. NCTCOG received six CWSRF projects to review during Fiscal Year 2017. Table 7 provides information on each CWSRF project and summarizes the NCTCOG review outcome.

Table 7. Clean Water State Revolving Fund Items Conformance Review

Entity	Date Reviewed	Project Summary	Is the project consistent with NCTCOG's current WQMP?
City of Stephenville	10/17/2016	Improvements and expansion of Eastside Sewer to alleviate a critical capacity burden on the existing sanitary sewer collection system and simultaneously serve potential developments of approximately 19,000 acres.	Yes – reviewed by NCTCOG and the Water Resources Council
Acton Municipal Utility District	10/17/2016	The expansion and improvement of the existing De Cordova Bend Estates Wastewater Treatment Plant to enhance its ability to handle increasing growth and development flows, as well as increase inflow and infiltration (I/I).	Yes – reviewed by NCTCOG and the Water Resources Council
City of River Oaks	12/12/2016	Replacement of approximately 45,860 linear feet of old concrete and clay open jointed sewer lines installed in the 1930's through 1950's.	Yes – reviewed by NCTCOG and the Water Resources Council
City of Fort Worth	12/12/2016	Sanitary sewer rehabilitation of several large diameter wastewater sewer mains to restore pipe structural integrity, reduce inflow and infiltration into the system, and to restore and/or improve hydraulic capacity.	Yes – reviewed by NCTCOG and the Water Resources Council
City of Grand Prairie	4/17/2017	Engagement in a Sanitary Sewer Overflow Initiative (SSOI) and subsequent enforcement order with the TCEQ, establishing a plan for the City to improve the performance of its wastewater collection system.	Yes – reviewed by NCTCOG and the Water Resources Council
City of Arlington	4/17/2017	Collection system improvements through the replacement of segments that consist of 29 gravity segments, totaling 19,075 linear feet of pipe.	Yes – reviewed by NCTCOG and the Water Resources Council
City of Dallas	5/9/2017	5 year collection system improvements project in the City of Dallas.	Yes – reviewed by NCTCOG and the Water Resources Council
City of Farmersville	5/12/2017	Rehabilitation of a the wastewater treatment plant #1, including the construction of 4 regional lift stations to help accommodate expansions and future flows.	Yes – reviewed by NCTCOG and the Water Resources Council

Source: TCEQ Notices; TWDB; NCTCOG, 2017

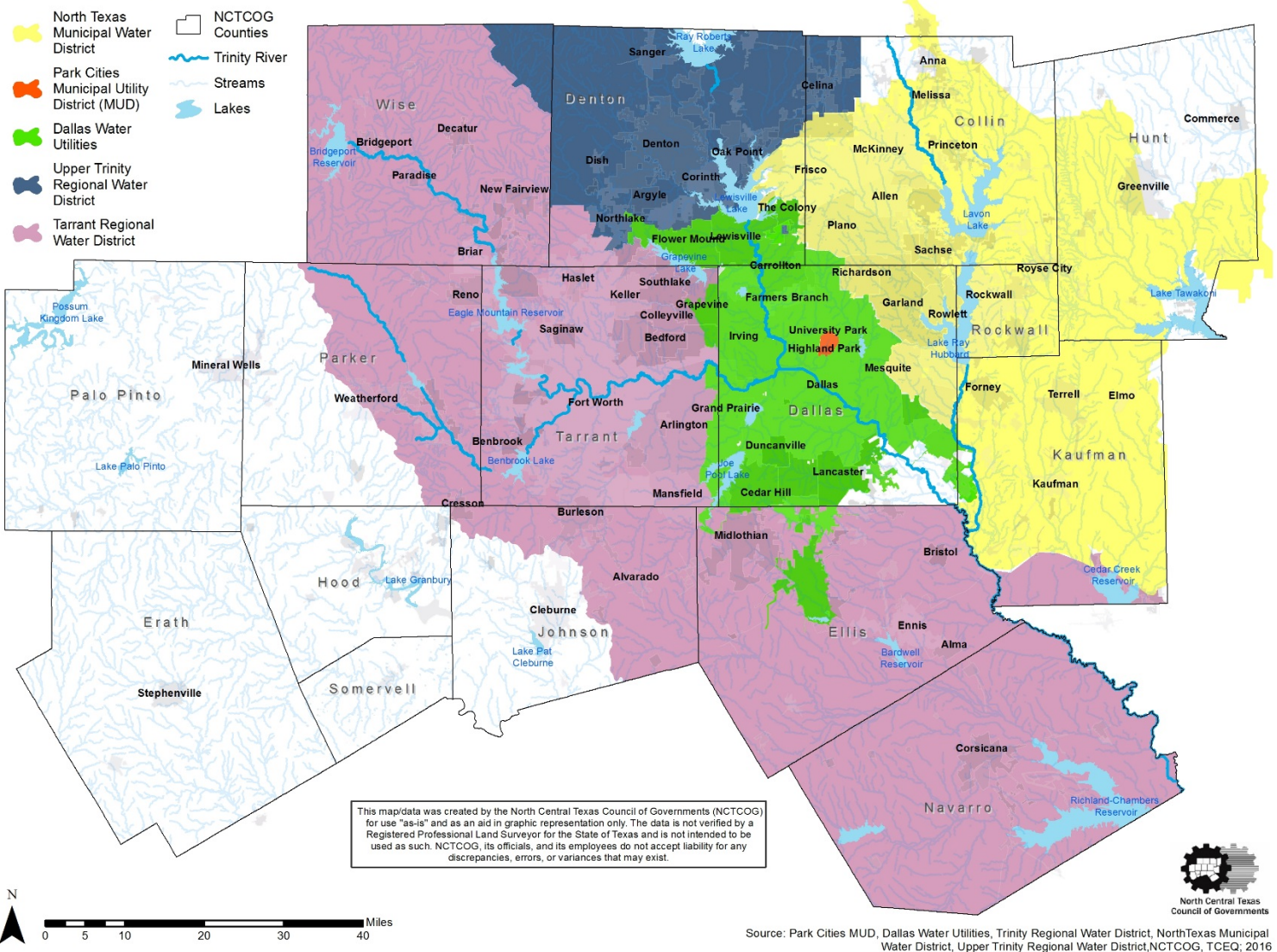
## NCTCOG Region Water Services Areas

A water district is a local, governmental entity that provides limited services to its customers and residents. Water districts are created when a group of cities and utilities come together for the purpose of planning water use on a multi-community basis. Water districts help to plan for current and future water use by collecting funds and allocating capital for water related infrastructure projects within the region.

Figure 12 shows the major water providers in the NCTCOG region and the areas served with a diverse set of water needs and services. The cooperation of multiple cities and utilities on the water districts board help to facilitate compliance with water, wastewater, and reclaimed water. A complete list of all water districts in the NCTCOG region can be found in Appendix D.

Figure 12. Water Service Areas in the NCTCOG Region

### Water Service Areas



The NCTCOG region utilizes analysis on available water supply, water shortage, and water demand developed by the Region C Water Planning Group who are tasked with developing a regional water plan to recommend management strategies for water in North Texas. The Region C Water Plan projects that 90% of the water shortages in 2070 will be for municipal users and predicts Collin, Dallas, Denton, and Tarrant Counties will have

the largest water needs in 2070. These forecasted needs encourage regional stakeholders to continue collaborating on best management for meeting future water supply demands. NCTCOG supports the Region C management strategies for achieving water supply goals as laid out in the [2016 Region C Water Plan](#).

There are 16 regional water planning areas in Texas. Six NCTCOG region counties fall into different regional water planning jurisdictions, however the recommendations for water management strategies serve to accomplish the same goals as Region C. [The Region G Water Plan](#) serves Plano Pinto, Erath, Hood, Somervell, and Johnson Counties, and the [Region D Water Plan](#) serves Hunt County.

### North Central Texas Water Resources Report

In North Central Texas there are many entities working together through regional collaboration to help protect water resources. By 2040, the NCTCOG region will nearly double in population, serving more than 10,835,000 residents. In order to keep up with the growing demands on our water resources, regional entities are working to improve the quality and quantity of water in this region. Often, people do not think about the scarcity and importance of water when it is available to them every day. Water, however, is a precious resource that needs protection. Ensuring appropriate water quality and quantity is a big job, but with the help of individuals, communities, and local governments we can work towards gaining a better understanding of where our water comes from, how to protect the quality, and how to ensure availability of clean water for future generations. Many North Central Texas communities, such as the communities mentioned below, are working hard to protect water resources in the region. Local governments and regional entities work to engage and educate residents about water resources through outreach, incentives, and active communication.

## City of Frisco

### Quick Facts

#### Location

Frisco, TX

#### Programs

Sprinkler Check Ups  
Block Captain Program  
WaterWise Newsletter

#### Awards

Water Mark Award (2016)  
Texas Environmental  
Excellence Award (2015)  
Municipal Blue Legacy  
Award (2015)  
CLIDE Award (2015)

#### Annual Sprinkle Check Up

#### Participation

3,524 (2016)

As one of the fastest growing cities in the U.S., Frisco has a historically high outdoor water usage due to automatic sprinkler systems. To educate a diverse population about proper management of their system and water usage, the city initiated the free sprinkler system checkup program. The program has grown from 660 checkups in 2006 to 3,524 in 2016. Residents can schedule their annual checkup with a city licensed irrigator. The city sends an irrigator to guide the homeowner through the irrigation system check-up, identify broken or misaligned sprinkler heads, check for leaks, and make scheduling adjustments to the controller, based on the city's watering schedule. Before departing, the irrigator will email the homeowner a list of any needed repairs including the pre and post checkup gallons of water used with the irrigation system. Frisco has also partnered with Sprinkle, a device that helps you schedule watering days and automatically shuts off the controller based upon weather, all through an app on residents' phones.



Frisco also provides weekly watering recommendations to subscribed residents via email based on data from weather stations data. This allows residents to be more aware of when they should and should not water their lawns.

## City of Melissa

### Quick Facts

#### Location

Melissa, TX

#### Programs Offered

Water My Yard  
Library Classes  
AMI System

#### Population

Approximately 10,000

#### Meters Connected to AMI

3,165 meters

Just north of McKinney, Texas, the City of Melissa is making great strides with water conservation. Melissa recently purchased a weather station to be part of the Texas A&M AgriLife Water My Yard program, which gives automated recommendations on the time and amount each resident should water, dependent upon weather and location.

The City of Melissa has also implemented an Advanced Metering Infrastructure (AMI) program that allows residents to see their water usage broken down by the hour, day, week, or month. This program also allows the residents to set alerts, so they can become more aware of their true water consumption. Currently, there are just over 3,000 water meters connected to the AMI system. That is nearly all of the City's meters!

With the recent employment of the AMI system, local weather station, and the Texas A&M AgriLife Water My Yard Program, the City of Melissa is hoping to make water customers and residents more in tune with their water consumption.



## Tarrant Regional Water District

The Tarrant Regional Water District (TRWD) and Dallas Water Utilities (DWU) recently launched a campaign aimed at educating residents to become more water efficient in their homes and outdoors. The "Water is awesome. Don't waste it." campaign engages residents through eye-catching commercials, resources, facts, videos and tips available on the [www.waterisawesome.com](http://www.waterisawesome.com) webpage. Also provided are weekly water recommendations for the TRWD service area that provides water need data based on weather data collected from weather stations across North Texas. This information is shared via social media to almost 8,000 followers.



## City of Plano

### Quick Facts

#### Location

Plano, TX

#### Programs Offered

Water Wise Landscape Tour  
Water Conservation Rebates  
Green Business Certification

#### Participation

Spring 2014: 1,650 yard visits  
Spring 2015: 600 yard visits  
Fall 2015: 900 yard visits

The City of Plano offers an annual Water Wise Landscape Tour of residential homes who have planted drought-tolerant, native, and adaptive landscapes. The program was modified from the Dallas Water Utilities program and was initially hosted at a time when they were entering strict watering guidelines for the summer. The City wanted people to see their options for drought-tolerant plants that needed little water. The tour continued after restrictions were lifted because many of Plano's homes are at the point in their landscape's "life" that they are ready to be replaced or upgrade. Lots of homeowners struggle with shade trees killing their turf. Plano wanted to provide a variety of options showcasing attractive, low-water plants so that homeowners had options when replacing landscapes.

Through participation in the Water Wise Landscape Tour, residents gain an understanding of what drought-tolerant landscaping looks like and see new ideas to transition their landscapes to move water-efficient landscapes. The tour has also impacted the number of landscapes using drought-tolerant plants and has shown a long-term trend in decrease outdoor water usage in the City of Plano.

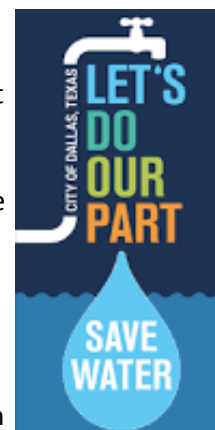


## City of Dallas

Over the past 30 years, the City of Dallas has implemented many water conservation programs that have grown to engage a variety of audiences through children's activities, workshops and seminars, landscaping tours, and much more. Since 2001, gallons per capita daily (GPCD) water use has been reduced by 26% by the City of Dallas and its customer cities. Dallas continues to make great strides in water conservation by providing programs under the umbrella of Save Dallas Water. Save

Dallas Water partners with schools and educators to help children understand the importance of saving water and enrich their learning experience. Since 1985, Dallas has offered contests for elementary, middle school, and high school students to complete a water conservation poster, shirt, or visual arts entry. They also facilitate a "Kid's Corner" on their website, which teaches kids about "lots of ideas on saving water" and other activities. The Save Dallas Water mascot, Dew, a drop of water that no longer wanted to be a "drip of wasted water," promises to teach children and students simple ways they can make a difference by saving water in their homes.

Save Dallas Water also provides Water Efficiency rebates to businesses towards the cost of new equipment and processes that conserve water at existing facilities. Currently, this program is being restructured to provide more favorable incentives. The updated program is slated to begin in August 2017.



## City of Cleburne

The City of Cleburne has been implementing an industrial reuse program at their wastewater treatment plant since 1997. At the time, the East Loop Reuse project was the largest industrial reuse program in Texas. The City of Cleburne is developing a new project that will tie into the current pipeline called the West Loop Reuse Project. The project will help the City of Cleburne achieve their goal to maximize its use of reuse water.



The extension of the West Loop pipeline will support long-range water supply strategy and defer more expensive sources of water from Lake Whitney. The West Loop pipeline will supply reclaimed water for oil and gas development, irrigation use by Cleburne Municipal Golf Course and commercial facilities, and industrial use. The current East Loop reuse program provides reclaimed water from its only wastewater treatment plant to a major industrial customer and a recreational sports complex for irrigation. Looking forward, the demand for water, for both industrial and drinking water use, will continue to grow as the city's population is expected to triple by 2050. The higher demand on available water resources has created a need for new water options which the City of Cleburne is hoping to find new sources from expanding the current reuse system.



In addition to these exceptional water programs underway within North Texas communities, The North Central Texas Council of Governments (NCTCOG) actively engages regional entities in water quality and water resources efforts and initiatives.

### Wastewater And Treatment Education Roundtable

Aiming to reduce potential damage to the region's household plumbing systems and wastewater treatment systems as well as to decrease hazards to water quality, the Wastewater And Treatment Education Roundtable (WATER) supports educational efforts related to the proper disposal of items such as wipes; paper towels; feminine hygiene and personal care products; medicines; household hazardous waste; and fats, oils, and grease (FOG). As part of this effort, WATER supports a regional FOG collection during the holidays. To learn more on how to properly dispose of problematic items, visit [www.CeasetheGreaseNTX.com](http://www.CeasetheGreaseNTX.com).

### TMDL Implementation Plan Program

NCTCOG is currently working in conjunction with the TCEQ on the Total Maximum Daily Load (TMDL) Implementation Plan (I-Plan) Program addressing bacteria loading for several impaired water bodies in the Dallas-Fort Worth Metroplex. A TMDL measures the amount of pollutant that a waterway can have and still meet the water quality standards for its designated use. 21 waterways in North Central Texas are currently included in the TMDL I-Plan program. NCTCOG coordinates with regional entities to conduct and document efforts to help reduce the bacteria impairment in the stream segments. For more information, please visit [www.nctcog.org/TMDL](http://www.nctcog.org/TMDL).

### Texas SmartScape

Texas SmartScape is an outreach program to educate residents on landscape best management practices, including the benefits of using plants that are native or adapted to our regional climate and local conditions. The program goals are to conserve local water supplies and improve stormwater runoff quality by reducing the amount of water needed to maintain landscapes while decreasing the amount of pesticide, fertilizer, and herbicides used. Many cities in the North

Texas region have also participated in a recent effort to promote Texas SmartScape plants and the program by partnering with nurseries and garden centers on plant sale events. To learn more, please visit [www.TXsmartscape.com](http://www.TXsmartscape.com).

### **Regional Ecosystem Framework**

The development of the Regional Ecosystem Framework (REF) was a collaboration between the Transportation and Environment and Development department at NCTCOG. The REF uses a watershed approach to define areas of ecological importance. The REF was developed into an interactive viewer that allows users to evaluate the ecological priorities at the subwatershed level and overlay additional spatial data relevant to efforts to conserve natural areas or mitigate environmental impacts of infrastructure projects. For more information and to view the interactive mapping application, please visit [www.nctcog.org/REF](http://www.nctcog.org/REF).

### **COMMON VISION Program**

The Trinity River COMMON VISION Program is the coordination of local governments along the Trinity River who launched a regional initiative that promote a safe, clean, enjoyable, natural, and diverse Trinity River. The program established the Corridor Development Certificate (CDC) process to stabilize flood risks along the Trinity River. A CDC permit is required to develop land within a specific area of the Trinity floodplain. Under the CDC process, neighboring local governments along the Trinity River Corridor are given the opportunity to review and comment on projects in each other's jurisdiction. This process will help prevent any increase flood risks as the Metroplex continues to grow. For more information, please visit [http://www.nctcog.org/envir/SEEsafe/fpm/C\\_V\\_background.asp](http://www.nctcog.org/envir/SEEsafe/fpm/C_V_background.asp).

### **Vision 303(d) Program**

In 2011, the state of Texas and EPA developed a new approach to address impaired water bodies. The 303(d) Vision Watershed Priority Strategy improves on the TMDL approach and provides an opportunity to use different methods to address impairments. Through the 303(d) Vision project, Texas A&M AgriLife Research and Extension and a team of partner organizations and stakeholders initiated a 7 year effort to address bacterial impairments in the Upper Trinity River Basin. Currently, the program is conducting education and outreach programs as well as gathering and analyzing existing data on bacteria impairments in the basin and if there are already efforts to protect them. The second phase of the effort will be implementation of needed strategies in the identified impaired areas. For more information, please visit <http://www.nctcog.org/envir/SEEClean/wq/utrbcc.asp>.

### **iSWM (*integrated Stormwater Management*)**

The Integrated Stormwater Management program (iSWM) for Construction and Development is a cooperative initiative that assists cities and counties achieve their goals of water quality protection, streambank protection, and flood mitigation, while also helping communities reach their construction and post construction obligations under state stormwater permits. The program consists of 4 types of documents and tools that can be utilized by regional entities. There are 15 founding iSWM communities in the North Central Texas Region. Moving forward, cities will go through a certification to become an iSWM community. For more information, please visit [www.iSWM.nctcog.org](http://www.iSWM.nctcog.org).

### **Trash Free Waters**

The EPA is currently working to develop a program with a focused set of national and regional actions that support trash prevention and reduction initiatives by many public and private stakeholders, resulting in significantly less trash entering watersheds. The goal is to begin approaching zero loadings of trash into coastal watersheds and ecosystems within 10 years. NCTCOG is working in partnership with communities along the Trinity River on a Trash Free Waters project to help reduce aquatic trash in the Trinity. For more information, please visit [www.epa.gov/trash-free-waters](http://www.epa.gov/trash-free-waters).

For more information on these and other programs from the North Central Texas Council of Governments, visit [www.nctcog.org/envir](http://www.nctcog.org/envir).

## Appendices

### **Appendix A. NCTCOG Cities Population Estimates (2010 – 2017)**



# Appendix A. NCTCOG Cities Population Estimates (2010 - 2017)

Source: NCTCOG Research and Information Services (RIS) Department, 2017

City Name	2010 Census Population April 1	2011 Estimated Population January 1	2012 Estimated Population January 1	2013 Estimated Population January 1	2014 Estimated Population January 1	2015 Estimated Population January 1	2016 Estimated Population January 1	2017 Estimated Population January 1	Absolute Growth (2016- 2017)
Addison	13,056	13,060	13,680	13,840	15,180	15,530	15,600	15,730	130
Aledo	2,716	3,210	3,240	2,820	2,980	3,210	3,530	3,930	400
Allen	84,246	85,150	87,280	89,030	91,530	93,280	94,060	95,350	1,290
Alvarado	3,785	3,810	3,800	3,850	3,910	4,080	4,170	4,210	40
Alvord	1,334	1,340	1,340	1,340	1,330	1,340	1,340	1,340	-
Anna	8,249	8,320	8,580	9,360	10,250	10,980	11,320	12,390	1,070
Annetta	1,288	1,290	1,290	1,310	2,630	2,670	2,720	2,740	20
Argyle	3,282	3,300	3,350	3,420	3,510	3,690	3,820	3,920	100
Arlington	365,438	369,820	371,900	374,520	378,070	379,370	380,740	382,230	1,490
Aubrey	2,595	2,600	2,600	2,600	2,670	2,780	3,100	3,110	10
Aurora	1,220	1,270	1,270	1,280	1,300	1,340	1,380	1,410	30
Azle	10,947	10,950	10,960	10,960	11,040	11,140	11,410	11,800	390
Balch Springs	23,728	23,720	23,880	24,270	24,280	24,280	24,310	24,480	170
Bartonville	1,469	1,570	1,590	1,630	1,630	1,640	1,650	1,670	20
Bedford	46,979	47,470	47,610	47,760	47,960	48,060	48,550	48,560	10
Benbrook	21,234	21,270	21,360	21,600	21,850	21,910	22,040	22,260	220
Blue Mound	2,394	2,390	2,390	2,390	2,390	2,390	2,390	2,390	-
Boyd	1,207	1,210	1,210	1,220	1,260	1,300	1,350	1,360	10
Bridgeport	5,976	5,980	5,990	6,000	6,050	6,080	6,100	6,130	30
Burleson	36,690	36,990	38,130	39,010	39,920	41,280	42,560	43,960	1,400
Caddo Mills	1,338	1,340	1,350	1,380	1,400	1,430	1,460	1,460	-
Carrollton	119,097	119,700	121,810	123,000	124,400	125,250	127,980	130,820	2,840
Cedar Hill	45,028	45,240	45,360	45,570	45,820	46,350	47,090	47,320	230
Celina	6,028	6,080	6,260	6,460	6,660	7,320	8,650	10,310	1,660
Chico	1,002	1,000	1,010	1,010	1,010	1,010	1,010	1,010	-
Cleburne	29,337	29,260	29,210	29,460	29,530	29,610	29,690	29,780	90
Cockrell Hill	4,193	4,200	4,200	4,180	4,170	4,160	4,160	4,160	-
Colleyville	22,807	22,860	23,090	23,270	23,740	23,760	24,230	24,630	400
Combine	1,942	1,950	1,950	1,960	1,960	1,960	1,970	2,010	40
Commerce	8,078	8,090	8,100	8,110	8,150	8,200	8,230	8,240	10
Coppell	38,659	39,010	39,210	39,380	39,550	39,880	40,310	40,820	510
Copper Canyon	1,334	1,340	1,330	1,340	1,350	1,370	1,380	1,390	10
Corinth	19,935	19,980	20,380	20,420	20,520	20,620	20,740	20,800	60

# Appendix A. NCTCOG Cities Population Estimates (2010 - 2017)

Source: NCTCOG Research and Information Services (RIS) Department, 2017

City Name	2010 Census Population April 1	2011 Estimated Population January 1	2012 Estimated Population January 1	2013 Estimated Population January 1	2014 Estimated Population January 1	2015 Estimated Population January 1	2016 Estimated Population January 1	2017 Estimated Population January 1	Absolute Growth (2016-2017)
Corsicana	23,770	23,770	23,800	23,820	23,900	23,940	23,970	24,040	70
Crandall	2,858	2,900	2,970	2,990	3,030	3,050	3,100	3,170	70
Cross Roads	1,563	1,560	1,580	1,620	1,710	1,840	1,910	1,950	40
Crowley	12,838	12,950	13,050	13,450	13,900	14,130	14,140	14,440	300
Dallas	1,197,816	1,205,490	1,213,550	1,221,800	1,232,360	1,244,270	1,257,730	1,270,170	12,440
Dalworthington Gardens	2,259	2,260	2,270	2,290	2,310	2,320	2,320	2,330	10
Decatur	6,042	6,120	6,170	6,230	6,330	6,390	6,490	6,530	40
DeCordova	2,683	2,680	2,700	2,710	2,720	2,730	2,750	2,790	40
Denton	113,383	115,180	116,770	117,920	120,820	123,200	125,980	128,160	2,180
DeSoto	49,047	49,210	49,540	49,930	50,520	50,970	51,770	52,120	350
Double Oak	2,867	2,880	2,880	2,890	2,920	2,930	2,950	2,970	20
Dublin	3,654	3,650	3,700	3,760	3,760	3,770	3,770	3,770	-
Duncanville	38,524	38,600	38,610	38,800	39,170	39,220	39,230	39,240	10
Edgecliff Village	2,776	2,860	2,860	2,870	2,870	2,870	3,030	3,220	190
Ennis	18,513	18,520	18,530	18,560	18,550	18,600	18,590	18,660	70
Euless	51,277	52,030	52,270	52,550	53,780	54,050	54,250	54,870	620
Everman	6,108	6,110	6,110	6,110	6,110	6,110	6,110	6,110	-
Fairview	7,248	7,270	7,390	8,020	8,310	8,420	8,490	9,110	620
Farmers Branch	28,616	28,600	28,620	28,800	29,660	30,350	30,480	31,560	1,080
Farmersville	3,301	3,300	3,300	3,290	3,290	3,310	3,330	3,330	-
Fate	6,434	6,890	7,180	8,070	8,770	9,700	10,470	11,380	910
Ferris	2,436	2,430	2,440	2,440	2,440	2,450	2,450	2,480	30
Flower Mound	64,669	64,940	65,260	65,580	66,660	67,710	69,070	71,850	2,780
Forest Hill	12,355	12,360	12,360	12,360	12,380	12,380	12,390	12,500	110
Forney	14,661	15,040	15,450	16,030	16,800	17,480	17,990	18,590	600
Fort Worth	741,206	753,320	764,460	774,510	781,100	792,720	806,380	815,430	9,050
Frisco	116,989	121,670	125,500	129,680	137,310	145,510	153,520	161,400	7,880
Garland	226,876	228,680	229,440	230,570	231,710	232,970	234,310	234,710	400
Glen Rose	2,444	2,460	2,460	2,460	2,470	2,480	2,490	2,490	-
Glenn Heights	11,278	11,330	11,330	11,410	11,440	11,440	11,680	11,680	-
Godley	1,009	1,010	1,010	1,010	1,020	1,030	1,040	1,060	20
Granbury	7,978	8,020	8,100	8,320	8,670	8,940	9,140	9,310	170

## Appendix A. NCTCOG Cities Population Estimates (2010 - 2017)

Source: NCTCOG Research and Information Services (RIS) Department, 2017

City Name	2010 Census Population April 1	2011 Estimated Population January 1	2012 Estimated Population January 1	2013 Estimated Population January 1	2014 Estimated Population January 1	2015 Estimated Population January 1	2016 Estimated Population January 1	2017 Estimated Population January 1	Absolute Growth (2016- 2017)
Grand Prairie	175,396	177,330	178,420	179,630	181,230	182,610	184,620	187,050	2,430
Grandview	1,561	1,560	1,560	1,560	1,550	1,580	1,610	1,620	10
Grapevine	46,334	46,300	46,420	47,070	48,060	48,520	48,920	49,130	210
Greenville	25,557	26,220	26,200	26,140	26,100	26,250	26,430	26,800	370
Haltom City	42,409	42,180	42,090	42,350	42,660	42,640	42,730	42,740	10
Haslet	1,517	1,490	1,500	1,550	1,630	1,660	1,710	1,720	10
Heath	6,921	6,950	7,170	7,260	7,440	7,430	7,690	7,820	130
Hickory Creek	3,247	3,250	3,250	3,250	3,320	3,620	3,730	3,870	140
Highland Park	8,564	8,520	8,520	8,500	8,480	8,440	8,430	8,510	80
Highland Village	15,056	15,140	15,180	15,170	15,260	15,290	15,370	15,380	10
Hudson Oaks	1,662	1,680	1,720	1,800	1,860	1,940	2,050	2,110	60
Hurst	37,337	37,590	37,740	37,910	38,280	38,340	38,380	38,410	30
Hutchins	5,338	5,340	5,340	5,350	5,350	5,350	5,350	5,350	-
Irving	216,290	218,080	219,160	223,720	227,030	228,610	231,040	234,710	3,670
Italy	1,863	1,870	1,870	1,870	1,870	1,860	1,850	1,850	-
Josephine	812	810	850	850	930	980	1,100	1,160	60
Joshua	5,910	5,930	5,950	6,010	6,040	6,090	6,350	6,680	330
Justin	3,246	3,250	3,250	3,250	3,250	3,260	3,370	3,640	270
Kaufman	6,703	6,660	6,650	6,660	6,640	6,610	6,620	6,670	50
Keene	6,106	6,100	6,090	6,120	6,150	6,160	6,230	6,280	50
Keller	39,627	39,940	40,440	41,090	42,040	42,890	44,050	44,620	570
Kemp	1,154	1,170	1,170	1,170	1,170	1,170	1,170	1,170	-
Kennedale	6,763	6,710	6,790	6,820	6,870	7,130	7,290	7,420	130
Kerens	1,573	1,620	1,620	1,620	1,630	1,620	1,700	1,700	-
Krugerville	1,662	1,660	1,660	1,670	1,670	1,670	1,680	1,690	10
Krum	4,157	4,190	4,310	4,440	4,750	4,790	4,880	4,890	10
Lake Dallas	7,105	7,120	7,130	7,150	7,220	7,240	7,250	7,260	10
Lake Worth	4,584	4,640	4,630	4,630	4,650	4,680	4,710	4,710	-
Lakeside	1,307	1,310	1,310	1,320	1,330	1,330	1,690	1,690	-
Lancaster	36,361	36,390	36,700	36,980	37,150	37,360	37,550	37,730	180
Lavon	2,219	2,350	2,480	2,600	2,740	2,970	3,080	3,220	140
Lewisville	95,290	96,210	96,880	97,860	98,330	99,480	100,400	103,640	3,240
Little Elm	25,898	26,840	28,260	29,280	31,530	34,100	35,050	38,250	3,200

# Appendix A. NCTCOG Cities Population Estimates (2010 - 2017)

Source: NCTCOG Research and Information Services (RIS) Department, 2017

City Name	2010 Census Population April 1	2011 Estimated Population January 1	2012 Estimated Population January 1	2013 Estimated Population January 1	2014 Estimated Population January 1	2015 Estimated Population January 1	2016 Estimated Population January 1	2017 Estimated Population January 1	Absolute Growth (2016- 2017)
Lowry Crossing	1,711	1,710	1,710	1,720	1,710	1,710	1,710	1,710	-
Lucas	5,166	5,320	5,450	5,750	5,970	6,400	6,680	7,030	350
Mabank	3,035	3,100	3,090	3,080	3,100	3,140	3,180	3,230	50
Mansfield	56,368	56,840	57,490	58,490	59,410	60,400	61,460	63,670	2,210
McKinney	131,117	133,010	136,180	140,670	147,910	154,840	161,470	169,710	8,240
McLendon-Chisholm	1,373	1,410	1,470	1,560	1,750	2,050	2,450	2,780	330
Melissa	4,695	4,900	5,200	5,710	6,190	6,890	7,920	8,850	930
Mesquite	139,824	140,980	141,430	141,900	142,210	142,230	142,950	143,060	110
Midlothian	18,037	18,670	19,130	19,710	20,540	21,610	22,620	24,450	1,830
Mineral Wells	16,788	16,800	16,830	16,810	16,770	16,790	16,740	16,740	-
Murphy	17,708	18,240	18,400	18,820	19,210	19,550	19,710	19,980	270
New Fairview	1,258	1,260	1,260	1,270	1,350	1,410	1,440	1,460	20
Newark	1,005	1,010	1,010	1,010	1,010	1,010	1,020	1,080	60
North Richland Hills	63,343	63,490	63,780	64,240	65,690	66,300	66,530	67,120	590
Northlake	1,724	2,110	2,110	2,160	2,150	2,160	2,660	3,010	350
Oak Leaf	1,298	1,300	1,300	1,300	1,310	1,340	1,350	1,370	20
Oak Point	2,786	2,820	2,820	2,930	2,950	3,080	3,080	3,210	130
Ovilla	3,492	3,490	3,500	3,510	3,550	3,690	3,820	3,920	100
Palmer	2,000	2,000	2,000	2,010	2,010	2,020	2,030	2,070	40
Pantego	2,394	2,400	2,410	2,430	2,450	2,460	2,460	2,470	10
Parker	3,811	3,830	3,910	4,010	4,110	4,200	4,290	4,440	150
Pelican Bay	1,547	1,550	1,560	1,560	1,570	1,580	1,620	1,650	30
Pilot Point	3,856	3,850	3,870	3,870	3,880	3,890	4,050	4,130	80
Plano	259,841	261,990	263,650	266,950	269,330	271,140	274,960	277,720	2,760
Ponder	1,395	1,400	1,410	1,420	1,460	1,520	1,560	1,780	220
Princeton	6,807	6,900	7,010	7,440	7,840	7,910	8,480	9,460	980
Prosper	9,423	11,160	12,190	13,380	14,710	15,970	17,790	20,160	2,370
Providence	4,786	4,790	4,980	5,260	5,400	5,750	6,170	6,310	140
Quinlan	1,394	1,390	1,390	1,390	1,390	1,400	1,410	1,430	20
Red Oak	10,769	10,850	11,090	11,250	11,530	11,980	12,260	12,600	340
Reno	2,494	2,500	2,500	2,510	2,520	2,560	2,590	2,610	20
Rhome	1,522	1,570	1,570	1,570	1,580	1,590	1,590	1,610	20
Rice	923	920	920	920	920	920	940	1,000	60

# Appendix A. NCTCOG Cities Population Estimates (2010 - 2017)

Source: NCTCOG Research and Information Services (RIS) Department, 2017

City Name	2010 Census Population April 1	2011 Estimated Population January 1	2012 Estimated Population January 1	2013 Estimated Population January 1	2014 Estimated Population January 1	2015 Estimated Population January 1	2016 Estimated Population January 1	2017 Estimated Population January 1	Absolute Growth (2016-2017)
Richardson	99,223	99,870	100,450	100,850	101,820	102,430	104,300	107,400	3,100
Richland Hills	7,801	7,800	7,800	7,870	7,910	7,920	7,920	7,920	-
River Oaks	7,427	7,420	7,310	7,280	7,280	7,270	7,290	7,310	20
Roanoke	5,962	6,140	6,320	6,470	6,750	7,200	7,650	8,040	390
Rockwall	37,490	37,780	38,290	39,090	40,030	40,620	41,370	42,120	750
Rowlett	56,199	56,230	56,310	56,430	56,450	56,910	57,220	57,840	620
Royse City	9,349	9,360	9,390	9,690	10,000	10,220	11,010	11,540	530
Runaway Bay	1,286	1,280	1,300	1,310	1,310	1,340	1,360	1,370	10
Sachse	20,329	20,420	20,800	21,090	21,580	22,460	23,130	23,950	820
Saginaw	19,806	19,870	20,000	20,170	20,370	20,480	20,740	21,320	580
Sanger	6,916	6,940	6,970	7,210	7,490	7,590	7,820	8,100	280
Sansom Park	4,686	4,690	4,690	4,680	4,680	4,680	4,670	4,680	10
Seagoville	14,835	14,850	14,920	15,020	15,130	15,390	15,580	15,900	320
Shady Shores	2,612	2,620	2,620	2,620	2,630	2,640	2,660	2,660	-
Southlake	26,575	26,600	26,770	27,080	27,330	27,710	28,290	28,880	590
Springtown	2,658	2,660	2,660	2,660	2,660	2,660	2,670	2,670	-
St. Paul	1,066	1,070	1,070	1,070	1,070	1,080	1,080	1,090	10
Stephenville	17,123	17,480	18,290	19,320	19,410	19,560	21,640	21,950	310
Sunnyvale	5,130	5,170	5,200	5,270	5,280	5,420	5,410	5,440	30
Talty	1,535	1,560	1,770	1,770	1,890	2,010	2,120	2,310	190
Terrell	15,816	15,770	15,770	15,850	16,130	16,220	16,320	16,570	250
The Colony	36,328	36,230	36,590	37,510	38,730	39,310	39,810	41,160	1,350
Trophy Club	8,024	8,190	8,560	9,420	10,100	10,690	10,860	11,250	390
University Park	23,068	23,020	23,040	22,930	22,870	22,840	22,720	22,820	100
Venus	2,960	3,000	3,020	3,020	3,040	3,110	3,220	3,370	150
Watauga	23,497	23,500	23,490	23,510	23,560	23,590	23,600	23,600	-
Waxahachie	29,621	30,400	30,680	31,550	32,070	32,670	33,480	34,410	930
Weatherford	25,250	25,310	25,440	25,940	26,200	26,600	27,080	27,660	580
West Tawakoni	1,576	1,590	1,590	1,600	1,600	1,600	1,600	1,610	10
Westlake	992	990	1,010	1,040	1,050	1,120	1,230	1,310	80
Westworth Village	2,472	2,480	2,490	2,530	2,600	2,620	2,630	2,620	(10)
White Settlement	16,116	16,240	16,260	16,460	16,680	16,740	16,830	16,830	-
Willow Park	3,982	3,980	4,030	4,060	4,490	4,590	4,640	4,780	140

**Appendix A. NCTCOG Cities Population Estimates (2010 - 2017)**

Source: NCTCOG Research and Information Services (RIS) Department, 2017

City Name	2010 Census Population April 1	2011 Estimated Population January 1	2012 Estimated Population January 1	2013 Estimated Population January 1	2014 Estimated Population January 1	2015 Estimated Population January 1	2016 Estimated Population January 1	2017 Estimated Population January 1	Absolute Growth (2016- 2017)
Wilmer	3,682	3,830	3,830	4,060	4,120	4,170	4,190	4,210	20
Wolfe City	1,412	1,410	1,410	1,410	1,420	1,420	1,420	1,420	-
Wylie	41,427	42,040	42,690	43,450	44,280	45,000	46,100	48,140	2,040

**Appendix B. TCEQ TPDES Permit Database (as of May 2017)**

Appendix B. TCEQ TPDES Permit Database (as of May 2017)

Source: TCEQ, NCTCOG, 2017

Date Received	Permit No.	EPA I.D. No.	Permit Intent	County	City	Name of Applicant	Permit Action	Permit Modification?	Permitted Flow (GPD)	Segment	Outfall Path
2/2/2015	WQ0010887001	TX0027502	Obtain Water Quality Permit Renewal	Collin	Josephine	City of Josephine	Renewal	no	70,000		From the plant site to an unnamed tributary; then to Brushy Creek; then to West Caddo Creek; then to Lake Tawakoni
2/3/2015	WQ0013220001		Water Quality Land Application Permit for Municipal Wastewater Renewal	Hunt	Quinlan	Boles Children's Home, Inc.	Renewal	no	16,000	0507	Located in the drainage basin of Lake Tawakoni in Segment No. 0507 of the Sabine River Basin
2/24/2015	WQ0013966001		TPDES Permit for Municipal Wastewater Amendment	Erath	Stephenville	Stephenville Mobile Home Park, Ltd.	Amendment	Remove the concentration-based Total Phosphorus limit and retain the mass-based Total Phosphorus limit	24,000	1255	Discharged to an unnamed tributary; then to Pole Hollow Branch; then to an unnamed impoundment; then to Pole Hollow Branch; then to Upper North Bosque River in Segment No. 1255 of the Brazos River Basin
2/27/2015	WQ0004877000	TX0131911	TPDES Permit for Industrial Wastewater Amendment	Somervell	Glen Rose	Somervell County Water District	Major Amendment	Authorize addition of naofiltration membrane wastewater as an authorized wastestream at an additional daily average flow not to exceed 90,000 gallons per day via outfall 001.	240,000	1229	From plant site to Wheeler Branch; then to Paluxy River/North Paluxy River in Segment No. 1229 of the Brazos River Basin
3/9/2015	WQ001468001		TPDES Permit for Municipal Wastewater Renewal	Johnson		South Fort Worth RV Ranch, LLC	Renewal	no	48,000	0828	Discharged to Quil Miller Creek; then to Village Creek; then to Lake Arlington in Segment No. 0828 of the Trinity River Basin
4/7/2015	WQ0013837001		Water Quality Land Application Permit for Municipal Wastewater	Hunt	Quinlan	Boles Independent School District	Renewal	no	12,300	0507	Located in the drainage basin of Lake Tawakoni in Segment No. 0507 of the Sabine River Basin
4/13/2015	WQ0013415001		TPDES Permit for Municipal Wastewater	Ellis	Red Oak	Trinity River Authority of Texas	Renewal	no	6,000,000	0805	Discharged to Red Oak Creek; then to the Upper Trinity River in Segment No. 0805 of the Trinity
4/27/2015	WQ0004937000	TX0132713	TPDES Permit for Industrial Wastewater Renewal	Tarrant		Premium Waters, Inc.	Renewal	no	100,000		From plant site to an unnamed tributary; then to Marshall Branch; then to Lake Turner; then to Marshal Branch; then to Grapevine Lake



Appendix B. TCEQ TPDES Permit Database (as of May 2017)

Source: TCEQ, NCTCOG; 2017

Date Received	Permit No.	EPA I.D. No.	Permit Intent	County	City	Name of Applicant	Permit Action	Permit Modification?	Permitted Flow (GPD)	Segment	Outfall Path
5/27/2015	WQ0010363001	TX0047911	TPDES Permit for Municipal Wastewater Amendment	Collin	Plano	North Texas Municipal Water District	Amendment	Increase in 2 hour peak flow from 41,700 gallons per minute (gpm) to 83,333 gpm	24,000,000	0820	Discharged into Rowlett Creek; then to Lake Ray Hubbard in Segment No. 0820 of the Trinity River Basin
7/14/2015	WQ0010555001	TX0020591	Obtain Water Quality Permit Renewal	Hunt		City of Commerce	Renewal	no	2,000,000		From plant site to unnamed tributary; then to Upper South Sulphur River
7/21/2015	WQ0012810001		Water Quality Land Application Permit for Municipal Wastewater Renewal	Tarrant	Newark	Eagle Mountain International Church, Inc.	Renewal	no	10,000	0809	Located in the drainage basin of Eagle Mountain Reservoir in Segment No. 0809 of the Trinity River Basin
7/23/2015	WQ0014236001		Obtain Water Quality Permit Renewal (Texas Land Application Permit Renewal)	Hunt	Quinlan	Individual Care of Texas, Inc.	Renewal	no	10,000		
7/28/2015	WQ0013732001	TX0123552	TPDES Permit for Municipal Wastewater Renewal	Denton	Flower Mound	Rocky Point Estates Land Trust and Steven Lee Case	Renewal	no	60,000	0826	Discharged to East For Sharps Branch; then to Sharps Branch; then to Grapevine Lake in Segment No. 0826 of the Trinity River Basin
8/10/2015	WQ0014735001	TX0128996	Obtain Water Quality Permit Amendment	Erath	Stephenville	Northside Subdivision Water Plant and Distribution Corp.	Amendment	Authorize the utilization of the load-based measurement and elimination of the concentration (mg/L) requirement for Total Phosphorus			From plant site to an unnamed tributary of the North Fork North Bosque River; then to North Fork North Bosque River; then to Upper North Bosque River
8/10/2015	WQ0002395000	TX0084328	Obtain Water Quality Permit Renewal	Hunt	Caddo Mills	Explorer Pipeline Company	Renewal	no			From plant site to unnamed ditch; then to an unnamed tributary; then to West Caddo Creek; then to Caddo Creek; then to Lake Tawakoni
8/17/2015	WQ0014195001	TX0123056	Obtain Water Quality Permit Amendment	Ellis	Italy	City of Italy	Amendment	Addition of an equalization basin			From plant site to an unnamed tributary; then to White Rock Branch; then to Chambers Creek above Richland-Chambers Reservoir

Appendix B. TCEQ TPDES Permit Database (as of May 2017)

Source: TCEQ, NCTCOG, 2017

Date Received	Permit No.	EPA I.D. No.	Permit Intent	County	City	Name of Applicant	Permit Action	Permit Modification?	Permitted Flow (GPD)	Segment	Outfall Path
8/19/2015	WQ0004288000	TX0123820	Obtain Water Quality Permit Amendment	Hood	Granbury	Wolf Hollow Services, LLC	Amendment	Authorize expansion of the treatment facilities; an increase in the discharge of treated wastewater to a volume not to exceed a daily average flow of 2,071,000 gallons per day; and an increase in the allowable temperature of the discharge	2,071,000		Discharge from plant site directly to the Brazos River below Lake Granbury
8/25/2015	WQ0014216001	TX0123561	TPDES Permit for Municipal Wastewater Renewal	Dallas	Wylie	North Texas Municipal Water District	Renewal	no	20,000,000	0820	Discharged into Muddy Creek; then to Lake Ray Hubbard in Segment No. 0820 of the Trinity River Basin
8/25/2015	WQ0001903000	TX0062197	Obtain Water Quality Permit Amendment	Palo Pinto	Palo Pinto	Brazos Electric Power Cooperative	Amendment	Authorize removal of the Effluent Characteristics and the limit on total suspended solids from outfall 002; revise the sampling point for outfall 001; the addition of internal outfalls; and the addition of proposed outfall 003			From plant site to man-made channel; then to Lake Palo Pinto via outfall 001, 002 and proposed outfall 003.
8/31/2015	WQ0014699001	TX0128686	TPDES Permit for Wastewater Renewal	Dallas	Dallas	Dallas County Park Cities Municipal Utility District	Renewal	no	720,000	0805	Discharged into Old Channel of Elm Fork Trinity River; then to the Upper Trinity River in Segment No. 0805 of the Trinity River Basin
8/31/2015	WQ0015378001	TX0136425	TPDES Permit for Municipal Wastewater New	Hunt		Walton Texas, LP	New	no	390,000	0507	Discharged into Elm Creek; then to West Caddo Creek; then to Caddo Creek; then to Lake Tawakoni in Segment No. 0507 of the Sabine River Basin
9/9/2015	WQ0015250001		Water Quality TPDES Permit Minor Amendment for Municipal Wastewater	Somervell		Earth Promise	Minor amendment	Authorize the relocation of the treatment facility and the point of discharge within the applicant's property boundary		1229	Discharged to a drainage; then to Barkers Branch; then to Paluxy River/North Paluxy River in Segment No. 1229 of the Brazos River Basin

Appendix B. TCEQ TPDES Permit Database (as of May 2017)

Source: TCEQ, NCTCOG; 2017

Date Received	Permit No.	EPA I.D. No.	Permit Intent	County	City	Name of Applicant	Permit Action	Permit Modification?	Permitted Flow (GPD)	Segment	Outfall Path
9/9/2015	WQ0015376001	TX0136395	TPDES Permit for Municipal Wastewater New	Somervell	Glen Rose	OCP-Tres Rios LLC	New	no	24,000	1204	Discharged to a natural drainage way; then to Brazos River below Lake Granbury in Segment No. 1204 of the Brazos River Basin
9/15/2015	WQ0015342001	TX0136204	TPDES Permit for Wastewater New	Wise	Decatur	City of Decatur	New	no	100,000	0810	Discharged into an unnamed branch; then to Waggoner Branch; then to West Fork Trinity River below Bridgeport Reservoir in Segment No. 0810 of the Trinity River Basin
9/18/2015	WQ0010760001	TX0100021	Obtain Water Quality Permit Renewal	Hunt		City of Lone Oak	Renewal	no	60,000		From plant site to Bull Creek; then to Lake Tawakoni
9/18/2015	WQ0013725001	TX0022331	Obtain Water Quality Permit Renewal	Hunt	Quinlan	City of Quinlan	Renewal	no	300,000		From plant site to Naufal Branch; then to Jones Creek; then to Lake Tawakoni
9/23/2015	WQ0013304001		Water Quality Permit (Texas Land Application Permit) Renewal	Parker		Azle Independent School District	Renewal	no	9,000		
10/2/2015	WQ0014215001	TX0123528	Obtain Water Quality Permit Renewal	Hunt		Mallard Point WWTP, LLC	Renewal	no	22,500		From plant site to an unnamed tributary; then to Lake Tawakoni
10/7/2015	WQ000185400		TPDES Permit for Industrial Wastewater Renewal	Somervell	Glen Rose	Luminant Generation Company, LLC	Renewal	no	3,168,000	1229	Discharged via outfall 001, 002, 003, and 004 to Squaw Creek Reservoir; then to Paluxy River/North Paluxy River in Segment No. 1229 of the Brazos
10/16/2015	WQ0014778001	TX0129402	TPDES Permit for Municipal Wastewater Renewal	Collin	Farmersville	City of Farmersville	Renewal	no	500,000	0821	From the plant site to an unnamed tributary; then to the Elm Creek Arm of Lavon Lake in Segment No. 0821 of the Trinity River Basin
10/16/2015	WQ0014054001		Water Quality Land Application Permit for Municipal Wastewater Renewal	Parker	Azle	Springtown Independent School District	Renewal	no	15,000	0809	Wastewater treatment facility and disposal site are located in the drainage basin of Eagle Mountain Reservoir in Segment No. 0809 of the Trinity River Basin
10/29/2015	WQ0004557000	TX0103080	Obtain Water Quality Permit Renewal	Hunt	Greenville	Greenville Electric Utility System	Renewal	no	111,000,000		From plant site to Greenville Reservoir No. 6; then to Greenville Reservoir No. 4 or during periods of heavy rainfall, over Greenville Reservoir No. 6 spillway; then to an unnamed tributary; then to Cowleech Fork; then to Lake Tawakoni

Appendix B. TCEQ TPDES Permit Database (as of May 2017)

Source: TCEQ, NCTCOG; 2017

Date Received	Permit No.	EPA I.D. No.	Permit Intent	County	City	Name of Applicant	Permit Action	Permit Modification?	Permitted Flow (GPD)	Segment	Outfall Path
10/29/2015	WQ0015411001	TX0136646	Obtain Water Quality Permit	Johnson		Johnson County Pipe, Inc.	New	no	20,000		From plant site via pipe; then to Fish Spring Branch; then to Mountain Creek; then to Joe Pool Lake
11/2/2015	WQ0010405001	TX0054348	TPDES Permit for Municipal Wastewater Amendment	Erath	Dublin	City of Dublin	Amendment	Authorize the land application of sewage sludge for beneficial use on 202 acres of land adjacent to the wastewater treatment facility	450,000	1221	Discharged to Resley Creek; then to Leon River below Proctor Lake in Segment No 1221 of the Brazos River Basin
11/2/2015	WQ0014685001	TX0128538	TPDES Permit for Wastewater Renewal	Hunt	Quinlan	Combined Consumers Special Utility District	Renewal	no	25,000	0507	Discharged directly into Lake Tawakoni in Segment No. 0507 of the Sabine River Basin
11/13/2015	WQ0013791001	TX0072508	Obtain Water Quality Permit Renewal	Hunt	Campbell	City of Campbell	Renewal	no	116,000		From plant site to Timber Creek; Then to Cowleech Fork Sabine River; Then to Lake Tawakoni
11/13/2015	WQ0004852000	TX0131504	Obtain Water Quality Permit Renewal	Parker	Weatherford	Parker County Special Utility District	Renewal	no	198,000		From plant site directly to the Brazos River below Possum Kingdom Lake
11/23/2015	WQ0014344001	TX0064513	TPDES Permit for Municipal Wastewater Renewal	Hunt	Quinlan	City of West Tawakoni	Renewal	no	300,000	0507	Discharge directly into Lake Tawakoni in Segment No. 0507 of the Sabine River Basin
12/3/2015	WQ0010366001	TX0021687	TPDES Permit for Municipal Wastewater Renewal	Rockwall		City of Royse City	Renewal	no	500,000	0507	Discharged to Sabine Creek; then to South Fork Sabine River; then to Lake Tawakoni in Segment No. 0507 of the Sabine River Basin
12/7/2015	WQ0015406001		Water Quality Land Application Permit for Municipal Wastewater New	Erath	Glen Rose	Rough Creek Operating, LP	New	no	19,000		The wastewater treatment facility and disposal site located 4 miles south-southeast of Us Highway 67 & County Rd 199
12/8/2015	WQ0010146001	TX0024180	TPDES Permit for Municipal Wastewater Renewal	Hunt		City of Celeste	Renewal	no	94,800	0507	Discharged to an unnamed tributary; then to Cowleech Fork of the Sabine River; Then to Lake Tawakoni in Segment No. 0507 of the Sabine River Basin
12/8/2015	WQ0013908001		Water Quality Land Application Permit for Municipal Wastewater Renewal	Navarro		Rice Independent School District	Renewal	no	15,000	0814	Located in the drainage basin of Chambers Creek above Richland Chambers Reservoir in Segment No. 0814 of the Trinity River Basin

Appendix B. TCEQ TPDES Permit Database (as of May 2017)

Source: TCEQ, NCTCOG, 2017

Date Received	Permit No.	EPA I.D. No.	Permit Intent	County	City	Name of Applicant	Permit Action	Permit Modification?	Permitted Flow (GPD)	Segment	Outfall Path
12/21/2015	WQ0013857001	TX0129780	TPDES Permit for Municipal Wastewater Renewal	Hunt		Sabine River Authority of Texas	Renewal	no	30,000	0507	Discharged from plant site directly into Lake Tawakoni in Segment No. 0507 of the Sabine River Basin
12/23/2015	WQ0010722001	TX0104752	Obtain Water Quality Permit Renewal	Palo Pinto		City of Graford	Renewal	no	111,000		From plant site to an unnamed tributary of Peach Branch; then to Pecan Branch; then to Keechi Creek; then to Brazos River below Possum Kingdom Lake
12/31/2015	WQ0011287003	TX0123862	TPDES Permit for Municipal Wastewater Amendment	Denton	Ponder	Town of Ponder	Amendment	Increase in the discharge of treated domestic wastewater from a daily average flow not to exceed 225,000 gallons per day (GPD) to 360,000 GPD	360,000	0826	Discharged into an unnamed tributary; then to Hog Branch; then to Denton Creek; then to Grapevine Lake in Segment No 0826 of the Trinity River Basin
12/31/2015	WQ0010383001	TX0023558	TPDES Permit for Municipal Wastewater Renewal	Hunt	Wolfe City	City of Wolfe City	Renewal	no	195,000	0306	Discharged into Oyster Creek; then to Upper South Sulphur River in Segment No. 0306 of the Sulphur River Basin
1/11/2016	WQ0014858001	TX0130044	Obtain Water Quality Permit Renewal	Kaufman		Janice Sue Mann	Renewal	no	1,120,000		From plant site to Big Brushy Creek; then to Kings Creek; then to Cedar Creek Reservoir
2/2/2016	WQ0012343001		Obtain Water Quality Permit (Texas Land Application Permit) Renewal	Johnson	Alvarado	Halliburton Energy Services, Inc.	Renewal	no	12,000		
2/18/2016	WQ0014246001	TX0023272	Obtain Water Quality Permit Renewal	Collin	Celina	City of Celina	Renewal	no	950,000		From plant site to unnamed tributary; then to Little Elm Creek; then to Lewisville Lake
2/24/2016	WQ0011761001		Obtain Water Quality Permit (Texas Land Application Permit) Renewal	Denton	Argyle	Morningstar Properties, Ltd	Renewal	no	13,500		
3/3/2016	WQ0010834001	TX0024929	Obtain Water Quality Permit Renewal	Kaufman		City of Crandall	Renewal	no	900,000		From plant site to an unnamed tributary; then to Buffalo Creek; then to East Fork Trinity River
3/23/2016	WQ0011593001	TX0055735	Obtain Water Quality Permit Renewal	Denton	Trophy Club	Trophy Club Municipal Utility District No. 1	Renewal	no	1,750,000		From plant site to Marshall Branch and/or unnamed tributaries with intermittent ponds; then to Marshall Branch; then to Grapevine Lake

Appendix B. TCEQ TPDES Permit Database (as of May 2017)

Source: TCEQ, NCTCOG; 2017

Date Received	Permit No.	EPA I.D. No.	Permit Intent	County	City	Name of Applicant	Permit Action	Permit Modification?	Permitted Flow (GPD)	Segment	Outfall Path
3/23/2016	WQ0004379000	TX0064777	Obtain Water Quality Permit Renewal	Ellis	Midlothian	TXI Operating, LP	Renewal	no			From plant site to drainage ditch; then to Cottonwood Creek; then to National Resource Conservation Service Reservoir; then to Cottonwood Creek; then to Newton Branch; then to Soap Creek; then to Joe Pool Lake
3/23/2016	WQ0013769001	TX0113573	Obtain Water Quality Permit Renewal	Johnson	Burleson	EMCAD Water and Wastewater, LLC	Renewal	no	42,000		From plant site to unnamed tributary; then to Valley Branch; then to Walnut Creek; then to Joe Pool Lake
3/23/2016	WQ0010026001	TX0053449	Obtain Water Quality Permit Renewal	Navarro		City of Dawson	Renewal	no	130,000		From plant site to unnamed tributary; then to Battle Creek; then to Richland Creek above Richland Chambers Reservoir
3/23/2016	WQ0013759001		Obtain Water Quality Permit (Texas Land Application Permit) Renewal	Parker		Town of Annetta	Renewal	no	264,000	0507	disposal site located 1.6 miles north of Deer Creek Wastewater Treatment Facility, Parker County, TX 76008
3/28/2016	WQ0010425002	TX0128392	TPDES Permit for Municipal Wastewater Renewal	Hunt		City of Caddo Mills	Renewal	no	375,000	0507	From plant site via pipe to West Caddo Creek; then to Caddo Creek; then to Lake Tawakoni in Segment No. 0507 of the Sabine River Basin
3/28/2016	WQ0010486002	TX0032018	Obtain Water Quality Permit Renewal	Tarrant	Grapevine	City of Grapevine	Renewal	no	5,750,000		From plant site to Morehead Branch; then to Grapevine Lake
3/28/2016	WQ0010862001	TX0026689	Obtain Water Quality Permit Renewal	Wise		City of Runaway Bay	Renewal	no	400,000		From plant site to Bridgeport Reservoir
3/31/2016	WQ0014143001	TX0120111	Obtain Water Quality Permit Renewal	Denton	Justin	Aqua Texas Inc.	Renewal	no	450,000		From plant site to Trail Creek; then to Denton Creek; then to Grapevine Lake
3/31/2016	WQ0014627001	TX0128023	Obtain Water Quality Permit Renewal	Kaufman	Forney	Helms Trail Properties, Inc.	Renewal	no	20,000		From plant site to Buffalo Creek; then to Lateral Site No. 2 (NRCS pond); then to Buffalo Creek; then to East Fork Trinity River
3/31/2016	WQ0014854001	TX0130028	Obtain Water Quality Permit Renewal	Navarro		Texas Department of Transportation	Renewal	no	14,000		From plant site directly to Richland-Chambers Reservoir
3/31/2016	WQ0013352002	TX0133388	Obtain Water Quality Permit Renewal	Tarrant	Burleson	Mansfield Independent School District	Renewal	no	20,000		From plant site to unnamed tributary; then to Valley Branch; then to Walnut Creek; then to Joe Pool Lake

Appendix B. TCEQ TPDES Permit Database (as of May 2017)

Source: TCEQ, NCTCOG; 2017

Date Received	Permit No.	EPA I.D. No.	Permit Intent	County	City	Name of Applicant	Permit Action	Permit Modification?	Permitted Flow (GPD)	Segment	Outfall Path
4/6/2016	WQ0011312001	TX0022501	Obtain Water Quality Permit Renewal	Denton		City of Justin	Renewal	no	800,000		From plant site to Trail Creek; then to Denton Creek; then to Grapevine Lake
4/6/2016	WQ0011600001	TX0043783	Obtain Water Quality Permit Renewal	Denton	Little Elm	Town of Little Elm	Renewal	no			From plant site to unnamed tributary; then to Lewisville Lake
4/6/2016	WQ0013847001	TX00118877	TPDES Permit for Municipal Wastewater Amendment	Ellis	Waxahachie	North Texas District Council Assemblies of God	Major Amendment	Authorize modifications to the treatment system and an increase in the discharge of treated wastewater from a	100,000	0814	From plant site to an unnamed tributary; then to Oak Branch; then to North Fork Chambers Creek; then to Chambers Creek above Richland Chambers Reservoir in Segment No. 0814
4/6/2016	WQ0014373001	TX0125270	TPDES Permit for Municipal Wastewater Renewal	Johnson	Cleburne	Double Diamond Utilities Co	Renewal	no	49,500		From plant site to unnamed tributary of Ham Creek; then to Ham Creek; then to Whitney Lake
4/6/2016	WQ0010739001		Obtain Water Quality Permit Renewal (Texas Land Application Permit Renewal)	Navarro		City of Barry	Renewal	no	20,000		
4/6/2016	WQ0014469001	TX0126110	TPDES Permit for Municipal Wastewater Renewal	Rockwall	Royse City	North Texas Municipal Water District	Renewal	no			From plant site to Parker Creek; then to South fork Sabine River; then to Lake Tawakoni
4/6/2016	WQ0013352001		Obtain Water Quality Permit Renewal (Texas Land Application Permit Renewal)	Tarrant	Burleson	Mansfield Independent School District	Renewal	no	12,000		
4/13/2016	WQ0010257001	TX0023931	Obtain Water Quality Permit Renewal	Dallas	Richardson	North Texas Municipal Water District	Renewal	no	4,750,000		From plant site to Floyd Branch; then to Cottonwood Creek; then to White Rock Creek; then to White Rock Lake
4/19/2016	WQ0013647001	TX0056588	Obtain Water Quality Permit Amendment	Denton	Aubrey	City of Aubrey	Amendment	increase in the discharge of treated domestic wastewater	550,000		From plant site to Aubrey Branch; then to Elm Fork Trinity River below Ray Roberts Lake
4/19/2016	WQ0010485002	TX0055611	TPDES Permit for Municipal Wastewater Renewal	Hunt	Greenville	City of Greenville	Renewal	no	6,000,000		From plant site to Long Branch; then to Cowleech Fork Sabine River; then to Lake Tawakoni

Appendix B. TCEQ TPDES Permit Database (as of May 2017)

Date Received	Permit No.	EPA I.D. No.	Permit Intent	County	City	Name of Applicant	Permit Action	Permit Modification?	Permitted Flow (GPD)	Segment	Outfall Path
4/19/2016	WQ0014803001	TX0129623	TPDES Permit for Municipal Wastewater Renewal	Kaufman		Las Lomas Municipal Utility District No. 4 of Kaufman County	Renewal	no	500,000	0818	From plant site to Terry Creek; then to Big Brushy Creek; then to Kings Creek; then to Cedar Creek Reservoir in Segment No. 0818 of the Trinity River Basin
4/19/2016	WQ0011864001	TX0073032	TPDES Permit for Municipal Wastewater Renewal	Navarro		City of Angus	Renewal	no	12,000		From plant site to unnamed tributary of Grape Creek; then to Grape Creek' then to Richland Chambers Reservoir
4/19/2016	WQ0013518001	TX0105872	Obtain Water Quality Permit Amendment	Tarrant		EMCAD Water and Wastewater, LLC	Renewal	no	96,300		From plant site via a pipe to an unnamed tributary of Deer Creek; then to Deer Creek; then to Village Creek; then to Lake Arlington
4/20/2016	WQ0014186001	TX0122661	Obtain Water Quality Permit Renewal	Denton		Aqua Texas Inc.	Renewal	no	330,000		From plant site to unnamed creek; then to Elizabeth Creek; then to Denton Creek; then to Grapevine Lake.
4/20/2016	WQ0014263001	TX0124079	Obtain Water Quality Permit Renewal	Denton		Aqua Texas Inc.	Renewal	no	255,000		From plant site to an unnamed drainage ditch; then to Elizabeth Creek; then to Denton Creek; then to Grapevine Lake
4/20/2016	WQ0013846001	TX0115991	Obtain Water Quality Permit Renewal	Johnson	Joshua	EMCAD Water and Wastewater, LLC	Renewal	no	30,500		From plant site to unnamed tributary No. 1 ; then to unnamed tributary No. 2; then to Rock Creek; then to Benbrook Lake
4/25/2016	WQ0010402003	TX0056731	Obtain Water Quality Permit Renewal	Navarro	Corsicana	City of Corsicana	Renewal	no			From plant site via outfall 001 to Post Oak Creek; Then to Richland-Chambers Reservoir; and via outfall 002 to an unnamed tributary; then to Post Oak Creek; then to Richland Chambers Reservoir
4/25/2016	WQ0010494013	TX0047295	Obtain Water Quality Permit Renewal	Tarrant	Arlington	City of Fort Worth	Renewal	no			From plant site directly to Lower West Fork Trinity River
4/26/2016	WQ0015018001	TX0133281	TPDES Permit for Wastewater Renewal	Kaufman	Terrell	North Texas Municipal Water District	Renewal	no	1,850,000		From plant site via outfall 002; via outfall 003; to an unnamed tributary; then to an unnamed tributary of Greasy Creek; then to Greasy Creek; then to Lake Tawakoni



Appendix B. TCEQ TPDES Permit Database (as of May 2017)

Source: TCEQ, NCTCOG; 2017

Date Received	Permit No.	EPA I.D. No.	Permit Intent	County	City	Name of Applicant	Permit Action	Permit Modification?	Permitted Flow (GPD)	Segment	Outfall Path
4/26/2016	WQ0013589001	TX0107981	TPDES Permit for Municipal Wastewater Renewal	Parker		Peaster Independent School District	Renewal	no	36,000	1206	From plant site to stock ponds; then to an unnamed tributary of Dry Creek; then to Dry Creek; then to Rock Creek; then to Brazos River below Possum Kingdom Lake in Segment No. 1206 of the Brazos River Basin
5/3/2016	WQ0010481001	TX0002143	Obtain Water Quality Permit Renewal	Collin	Wylie	North Texas Municipal Water District	Renewal	no	1,980,000		From outfalls 001 and 002 to Rush Creek; then to Lake Ray Hubbard; Outfalls 005 and 006 in an unnamed tributary; then to Rush Creek; then to Lake Ray Hubbard; from Outfall 003 and 004 to a NTMWD drainage ditch; to an unnamed creek; then to Lavon Lake; Outfall 007 to an unnamed Creek; then to Lavon Lake
5/3/2016	WQ0010698001	TX0020354	Obtain Water Quality Permit Renewal	Denton		Upper Trinity Regional Water District	Renewal	no	7,500,000		From plant site directly to Lewisville Lake
5/3/2016	WQ0004849000	TX0131466	TPDES Permit For Industrial Wastewater	Hunt	Caddo Mills	Pilot Travel Centers, LLC	Renewal	no	15,000	0507	From plant site to an unnamed tributary; then to Elm Creek; then to West Caddo Creek; then to Caddo Creek; then the Lake Tawakoni in Segment No. 0507 of the Sabine River Basin
5/3/2016	WQ0010747001	TX0022527	Obtain Water Quality Permit Renewal	Kaufman	Terrell	City of Terrell	Renewal	no	4,500,000		From plant site to Kings Creek; then to Cedar Creek Reservoir
5/3/2016	WQ0011606001	TX0075418	Obtain Water Quality Permit Renewal	Navarro	Blooming Grove	City of Blooming Grove	Renewal	no	100,000		From plate site to an unnamed tributary of Rush Creek; then to Rush Creek; Then to Richland Creek above Richland-Chambers Reservoir
5/3/2016	WQ0010612001	TX0066745	Obtain Water Quality Permit Renewal	Tarrant		St. Francis Village	Renewal	no	85,000		From plant site via pipe to Benbrook Lake
5/3/2016	WQ0014792001	TX0093092	Obtain Water Quality Permit Renewal	Tarrant	Fort Worth	Benbrook Texas Limited Partnership	Renewal	no	35,000		From plant site to an unnamed tributary; then to Benbrook Lake
5/4/2016	WQ0010172002	TX0027723	Obtain Water Quality Permit Renewal	Collin	Frisco	City of Frisco	Renewal	no	300,000		From plant site to Cottonwood Branch; then to Lewisville Lake

Appendix B. TCEQ TPDES Permit Database (as of May 2017)

Source: TCEQ, NCTCOG; 2017

Date Received	Permit No.	EPA I.D. No.	Permit Intent	County	City	Name of Applicant	Permit Action	Permit Modification?	Permitted Flow (GPD)	Segment	Outfall Path
5/4/2016	WQ0012446001	TX0088633	Obtain Water Quality Permit Renewal	Collin	Allen	North Texas Municipal Water District	Renewal	no	64,000,000		From plant site to Lavon Lake
5/4/2016	WQ0013457001	TX0104957	Obtain Water Quality Permit Amendment	Denton	Roanoke	Trinity River Authority of Texas	Amendment	Authorize an increase in the 2-hr peak flow for both outfall 001 and outfall 002 and to add additional phase for outfall 002			From plant site via outfall 001 to Cade Branch; then to Denton Creek; then to Grapevine Lake and via outfall 002 via a pipe to an unnamed tributary of Whites Branch; then to Grapevine Lake
5/4/2016	WQ0014008001	TX0103501	Obtain Water Quality Permit Renewal	Denton	Frisco	North Texas Municipal Water District	Renewal	no	15,000,000		From plant site to Stewart Creek; then to Garza-Little Elm Reservoir portion of Lewisville Lake
5/4/2016	WQ0014245001	TX0123901	Obtain Water Quality Permit Renewal	Denton	Frisco	North Texas Municipal Water District	Renewal	no	10,000,000		From plant site to Panther creek; then to Lewisville Lake
5/4/2016	WQ0014372001	TX0022403	Obtain Water Quality Permit Renewal	Denton	Sanger	City of Sanger	Renewal	no	980,000		From plant site to an unnamed ditch; then to Ranger Branch; then to Paddock Lake; then to Ranger Branch; then to Clear creek; then to Lewisville Lake
5/4/2016	WQ0010348001	TX0025011	Obtain Water Quality Permit Renewal	Ellis		Trinity River Authority of Texas	Renewal	no	6,000,000	0838	Discharged via two outfalls to two unnamed tributaries of Newton Branch; then to Newton Branch; then to SCS Reservoir 10; then to Newton Branch; then to Soap Creek; then to Mountain Creek; then to Joe Pool Lake in Segment No. 0838 of the Trinity River Bas
5/4/2016	WQ0014101001	TX0119229	Obtain Water Quality Permit Renewal	Johnson	Alvarado	Alvarado Independent School District	Renewal	no	35,000		From plant site to unnamed tributary; then to King Branch; then to Walnut Creek; then to Joe Pool Lake
5/4/2016	WQ0014556001	TX0125954	Obtain Water Quality Permit Renewal	Johnson	Joshua	Shalimar Fort Worth LP	Renewal	no	9,000		From plant site to a ditch; then to West Buffalo Creek; then to a pond; then to West Buffalo Creek; then to Buffalo Creek; then to Nolan River
5/4/2016	WQ0014887001	TX0104558	Obtain Water Quality Permit Renewal	Johnson	Godley	City of Godley	Renewal	no	360,000		From plant site to West Nolan Creek; then to Nolan Creek; Then to Lake Pat Cleburne

Appendix B. TCEQ TPDES Permit Database (as of May 2017)

Source: TCEQ, NCTCOG, 2017

Date Received	Permit No.	EPA I.D. No.	Permit Intent	County	City	Name of Applicant	Permit Action	Permit Modification?	Permitted Flow (GPD)	Segment	Outfall Path
5/4/2016	WQ0004359000	TX0124419	Obtain Water Quality Permit Amendment	Kaufman	Forney	FPLE Forney LLC	Amendment	Authorize the removal of internal outfalls 101 and 201 and the reclassification of the reverse osmosis reject water and Heat Recovery Steam Generator blowdown to cooling tower blowdown			From plant site directly to the East Fort Trinity River via outfall 001 and via outfall 002 to Buffalo Creek; Thence to the East Fork Trinity River
5/4/2016	WQ0011646001		Obtain Water Quality Texas Land Application Permit (TLAP) Renewal	Navarro		Mildred Independent School District	Renewal	no	20,000		
5/4/2016	WQ0012047001	TX0078565	Obtain Water Quality Permit Renewal	Rockwall	Rockwall	North Texas Municipal Water District	Renewal	no	2,250,000		From plant site to Buffalo Creek; Then to East Fork Trinity River
5/4/2016	WQ0010701001	TX0024783	Obtain Water Quality Permit Renewal	Wise		City of Rhome	Renewal	no	100,000		From plant site to an unnamed tributary; then to Elizabeth Creek; then to Denton Creek; Then to Grapevine Lake
5/9/2016	WQ0010221001	TX0047431	Obtain Water Quality Permit Renewal	Dallas	Mesquite	North Texas Municipal Water District	Renewal	no	41,000,000		From plant site to South Mesquite Creek; then to the East Fork Trinity River
5/9/2016	WQ0003838000	TX0118567	Obtain Water Quality Permit Renewal	Denton	Denton	Acme Brick Company	Renewal	no	intermittent and flow variable rate		From plant site via outfall 001 to an unnamed tributary of Hickory Creek; then to Hickory Creek; then to Lewisville Lake; and via outfall 002 to an unnamed tributary of Fletcher Branch; then to Fletcher Branch; then to City Lake; then to Fletcher Branch; then to two unnamed impoundments; then to Fletcher Branch; Then to Hickory Creek; Then to Lewisville Lake
5/9/2016	WQ0003840000	TX0118532	Obtain Water Quality Permit Renewal	Denton	Corinth	Acme Brick Company	Renewal	no	intermittent and flow variable rate		From plant site to an unnamed tributary; then to Horseshoe Lake; then to an unnamed tributary; then to an unnamed pond; then to Lake Lewisville

Appendix B. TCEQ TPDES Permit Database (as of May 2017)

Source: TCEQ, NCTCOG; 2017

Date Received	Permit No.	EPA I.D. No.	Permit Intent	County	City	Name of Applicant	Permit Action	Permit Modification?	Permitted Flow (GPD)	Segment	Outfall Path
5/9/2016	WQ0002837000		Water Quality TPDES Permit Renewal	Hunt		JP Energy Caddo LLC	Renewal	no	intermittent and flow variable rate	0507	Discharged via outfall 001 to Gates Branch; then to Elm Creek; then to Caddo Creek; via outfalls 002 and 003 to a drainage ditch; then to Gates Branch; then to Elm Creek; then to Caddo Creek; Then to Lake Tawakoni in Segment No 0507 of the Sabine River Basin
5/9/2016	WQ0010262001	TX0022241	Obtain Water Quality Permit Renewal	Rockwall	Rockwall	North Texas Municipal Water District	Renewal	no	1,200,000		From plant site to Squabble creek; Then to Lake Ray Hubbard
5/11/2016	WQ0010060003	TX0002364	Obtain Water Quality Permit Renewal	Dallas	Sunnyvale	City of Dallas	Renewal	no	15,000,000		From plant site to East Fork Trinity River
5/11/2016	WQ0011321001	TX0020711	Obtain Water Quality Permit Renewal	Denton	Flower Mound	Town of Flower Mound	Renewal	no	10,000,000		From plant site to Bakers Branch; then to Denton Creek
5/11/2016	WQ0010847001	TX0027120	Obtain Water Quality Permit Renewal	Parker	Aledo	City of Aledo	Renewal	no	600,000		From plant site to an unnamed tributary; then to Clear Fork Trinity River Below Lake Weatherford
5/12/2016	WQ0014522001	TX0126691	Obtain Water Quality Permit Renewal	Hunt	Hawk Cove	City of Hawk Cove	Renewal	no	200,000		From plant site to Lake Tawakoni
5/12/2016	WQ0014339001	TX0057631	Obtain Water Quality Permit Renewal	Wise	Alvord	City of Alvord	Renewal	no	112,000		From plant site to an unnamed ditch; then to Elm Creek; then to Big Sandy Creek; then to West Fork Trinity River Below Bridgeport Reservoir
5/16/2016	WQ0014323001	TX0124745	Obtain Water Quality Permit Renewal	Denton	Aubrey	Upper Trinity Regional Water District	Renewal	no	2,000,000		From plant site to Cantrell Slough; then to Lewisville Lake
5/16/2016	WQ0013981001	TX0020567	Obtain Water Quality Permit Renewal	Ellis	Avalon	Avalon Water Supply and Sewer Service Corporation	Renewal	no	40,000		From plant site through a pipe to an unnamed tributary; then to an unnamed reservoir; then to an unnamed tributary; then to Chambers Creek Above Richland Chambers Reservoir
5/16/2016	WQ0015034001		Obtain Water Quality Texas Land Application Permit (TLAP) Amendment	Johnson		Joco Holding Corporation	Amendment	no	10,000		
5/16/2016	WQ0013528001	TX0106101	TPDES Permit for Municipal Wastewater Renewal	Navarro		Bosque Utilities Corporation	Renewal	no	60,000	0836	From plant site directly into Richland Chambers Reservoir in Segment No. 0836 of the Trinity River Basin

Appendix B. TCEQ TPDES Permit Database (as of May 2017)

Source: TCEQ, NCTCOG, 2017

Date Received	Permit No.	EPA I.D. No.	Permit Intent	County	City	Name of Applicant	Permit Action	Permit Modification?	Permitted Flow (GPD)	Segment	Outfall Path
5/16/2016	WQ0014003001	TX0117919	Obtain Water Quality Permit Renewal	Parker	Aledo	Cowtown RV Park Ltd	Renewal	no	21,600		From plant site to an unnamed tributary; then to Clear Fork Trinity River Below Lake Weatherford
5/16/2016	WQ0014306001	TX0124494	TPDES Permit for Municipal Wastewater Renewal	Wise		Slidell Independent School District	Renewal	no	20,000	0823	From plant site via pipe to North Hickory Creek; then to Hickory Creek; then to Lewisville Lake in Segment No. 0823 of the Trinity River Basin
5/19/2016	WQ0013786001	TX0089338	Obtain Water Quality Permit Renewal	Hood	Walters Bend	Aqua Texas Inc.	Renewal	no	42,000		Discharge from plant site to Lake Granbury
5/20/2016	WQ0010698003	TX0125172	Obtain Water Quality Permit Renewal	Denton	Little Elm	Upper Trinity Regional Water District	Renewal	no	5,225,000		From plant site to an unnamed tributary; then to Doe Branch portion of Lake Lewisville
5/20/2016	WQ0010903001	TX0026565	Obtain Water Quality Permit Renewal	Denton	Lakewood Village	Town of Lakewood Village	Renewal	no	100,000		From plant site directly to Lake Lewisville
5/20/2016	WQ0011183003	TX0023116	Obtain Water Quality Permit Renewal	Tarrant	Azle	City of Azle	Renewal	no	1,010,000		From plant site via outfall 003; to Reynolds Branch; then to Ash Creek; Then to Eagle Mountain Reservoir and via outfall 004 to
5/27/2016	WQ0010380002	TX0047724	Obtain Water Quality Permit Amendment	Parker	Weatherford	City of Weatherford	Amendment	addition of an outfall (002) as an alternative discharge			From plant site to an unnamed ditch; then to an unnamed tributary; then to Town Creek; then to the South Fork Trinity
6/13/2016	WQ0002964000	TX0103292	Obtain Water Quality Permit Amendment	Collin	Frisco	Exide Technologies	Amendment	the addition of wastewater sources and an increase in the discharge of treated wastewater to a volume not to exceed a daily average flow of 400,000 gallons per day.			From plant site via pipe to Stewart Creek
6/13/2016	WQ0010442002		Obtain Water Quality Permit Renewal	Collin	Farmersville	City of Farmersville	Renewal	no	530,000		From plant site to an unnamed tributary of Elm Creek; then to Elm Creek; then to Lavon Lake
6/13/2016	WQ0014577001	TX0127345	Obtain Water Quality Permit Renewal	Collin	Lavon	City of Lavon	Renewal	no	250,000		From plant site to Bear Creek; then to Camp Creek; then to Lake Ray Hubbard
6/13/2016	WQ0013785001	TX0093696	Obtain Water Quality Permit Renewal	Denton	The Colony	Marine Quest-Hidden Cove, L.P.	Renewal	no	16,000		From plant site to Lewisville Lake

Appendix B. TCEQ TPDES Permit Database (as of May 2017)

Source: TCEQ, NCTCOG, 2017

Date Received	Permit No.	EPA I.D. No.	Permit Intent	County	City	Name of Applicant	Permit Action	Permit Modification?	Permitted Flow (GPD)	Segment	Outfall Path
6/13/2016	WQ0013590001	TX0111333	Obtain Water Quality Permit Amendment	Hood	Lipan	City of Lipan	Amendment	increase in the pH upper limits			From plant site via pipe to Kickapoo Creek; Then to the Brazos River Below Possum Kingdom Lake
6/13/2016	WQ0014350001	TX0124923	Obtain Water Quality Permit Amendment	Johnson		Johnson County Special Utility District	Amendment	removal of an intra boat clarifier, the addition of several types of equipment to the facility and to increase the discharge of treated wastewater at a volume not to exceed a daily average flow of 790,000 gpd	790,000		From plant site to Village Creek; then to Lake Arlington
6/13/2016	WQ0014411001	TX0058360	Obtain Water Quality Permit Renewal	Johnson	Alvarado	Blue Waters Property Owners Association, Sewer Service and Water Supply Corporation	Renewal	no	30,000		From plant site to Lake Alvarado; then to Turkey Creek; then to North Fork Chambers Creek; then to Chambers Creek Above Richland Chambers Reservoir
6/20/2016	WQ0010729001	TX0024198	Obtain Water Quality Permit Renewal	Denton		City of Krum	Renewal	no	700,000		From plant site to North Hickory Creek; then to Hickory Creek; then to Lewisville Lake
6/20/2016	WQ0011570001	TX0053112	Obtain Water Quality Permit Renewal	Denton	The Colony	City of The Colony	Renewal	no	4,500,000		From plant site directly to Lake Lewisville
6/20/2016	WQ0010695001	TX0023396	Obtain Water Quality Permit Renewal	Kaufman	Kemp	City of Kemp	Renewal	no	350,000		From plant site to an unnamed tributary; then to an unnamed tributary (Willow Creek) then to Kings Creek of Cedar Creek Reservoir
6/20/2016	WQ0014837002	TX0137022	Obtain Water Quality Permit Renewal	Palo Pinto		City of Gordon	Renewal	no	250,000		From plant site to Gordon City Reservoir; then to an unnamed tributary; then to Gibson Creek; then to Palo Pinto Creek; then to Palo Pinto Lake
6/23/2016	WQ0010027004	TX0119849	Obtain Water Quality Permit Renewal	Denton	Denton	City of Denton	Renewal	no	800,000		From plant site via pipe to an unnamed tributary; then to Hog Branch; then to Denton Creek; then to Grapevine Lake
6/23/2016	WQ0013675001	TX0026581	Obtain Water Quality Permit Renewal	Ellis		City of Bardwell	Renewal	no	80,000		From plant site to an unnamed ditch; then to an unnamed tributary; then to Bardwell Reservoir

Appendix B. TCEQ TPDES Permit Database (as of May 2017)

Source: TCEQ, NCTCOG; 2017

Date Received	Permit No.	EPA I.D. No.	Permit Intent	County	City	Name of Applicant	Permit Action	Permit Modification?	Permitted Flow (GPD)	Segment	Outfall Path
6/23/2016	WQ0011382001		Obtain Water Quality Permit Renewal (Texas Land Application Permit Renewal)	Wise	Azle	Fort Worth Independent School District	Renewal	no	50,000		
6/29/2016	WQ0004663000	TX0126080	Obtain Water Quality Permit Renewal	Dallas	Dallas	Buckley Oil Company	Renewal	no			From plant site to Able Sump; then to the Upper Trinity River
6/29/2016	WQ0010379001	TX0027537	Obtain Water Quality Permit Renewal	Ellis	Waxahachie	City of Waxahachie	Renewal	no	8,000,000		From plate site to Waxahachie Creek; then to Bardwell Reservoir
6/29/2016	WQ0004897000		Obtain Water Quality Permit Renewal (Texas Land Application Permit Renewal)	Wise	Poolville	Wise County Power Company, LLC	Renewal	no	8,640		
6/30/2016	WQ0002427000	TX0083437	Obtain Water Quality Permit Renewal	Ellis	Midlothian	Ash Grove Cement Company	Renewal	no	300,000		From plant site to an unnamed tributary of Bedford Brnach; then to Bedford Branch; then to Joe Pool Lake
6/30/2016	WQ0010444001	TX0022420	Obtain Water Quality Permit Renewal	Navarro	Frost	City of Frost	Renewal	no	50,000		From plant site to an unnamed tributary; then to Elm Brnach; then to Mill Creek; then to Chambers Creek above Richland-Chambers Reservoir
7/5/2016	WQ0010027003	TX0047180	Obtain Water Quality Permit Renewal	Denton	Denton	City of Denton	Renewal	no	21,000,000		From plant site to Pecan Creek; then to Lewisville Lake
7/5/2016	WQ0002580000	TX0090425	Obtain Water Quality Permit Renewal	Ellis	Midlothian	Holcim Limited Partnership	Renewal	no			From plant site via outfall 001 to an unnamed tributary of North Prong Creek; then to North Prong Creek; then to Waxahachie Creek; then to Bradwell Reservoir
7/7/2016	WQ0014416001	TX0125628	Obtain Water Quality Permit Renewal	Denton	Denton	City of Denton	Renewal	no	950,000		From plant site to Pond 1; then to Pond 2; then to Clear Creek; then to Lewisville Lake
7/11/2016	WQ0011451001		TPDES Permit for Municipal Wastewater Renewal	Collin	Wylie	Seis Lagos Utility District and North Texas Municipal Water District	Renewal	no	250,000	0821	Discharged to an unnamed tributary of Lavon Lake; then to Avon Lake in Segment No. 0821 of the Trinity River Basin
7/11/2016	WQ0015479001	TX0137138	Obtain Water Quality Permit	Denton	Krum	Big Sky Trails, Ltd	New	no	680,000		From plant site via pipe; then to an unnamed tributary of Denton Creek; then to Denton Creek; then to Lake Grapevine

Appendix B. TCEQ TPDES Permit Database (as of May 2017)

Source: TCEQ, NCTCOG; 2017

Date Received	Permit No.	EPA I.D. No.	Permit Intent	County	City	Name of Applicant	Permit Action	Permit Modification?	Permitted Flow (GPD)	Segment	Outfall Path
7/11/2016	WQ0013868001	TX0118770	Obtain Water Quality Permit Renewal	Johnson	Alvarado	Shalimar Fort Worth LP	Renewal	no	22,500		From plant site to an unnamed tributary; then to Walnut Creek; then to Joe Pool Lake
7/11/2016	WQ0015482001	TX0137154	Obtain Water Quality Permit Proposed	Kaufman		Daedelus Corporation	New	no	20,000		From plant site to a ditch; then to Brushy Creek; then to Kings Creek; then to Cedar Creek Reservoir
7/19/2016	WQ0010060001	TX0047830	Obtain Water Quality Permit Renewal	Dallas	Dallas	City of Dallas	Renewal	no	200,000,000		From plant site directly to the Upper Trinity River
7/19/2016	WQ0010443004	TX0125563	Obtain Water Quality Permit Renewal	Ellis	Ennis	City of Ennis	Renewal	no	250,000		From plant site to an unnamed tributary; then to Bardwell Reservoir
7/19/2016	WQ0011028001	TX0117056	Obtain Water Quality Permit Renewal	Navarro		Rice Water Supply and Sewer Service Corporation	Renewal	no	86,000		From plant site to an unnamed creek; then to Cummins Creek; then to Chambers Creek Above Richland-Chambers Reservoir
7/21/2016	WQ0013937001	TX0020290	Obtain Water Quality Permit Renewal	Ellis	Milford	City of Milford	Renewal	no	120,000		From plant site via outfall 001 and 002 to an unnamed tributary; then to Mills Creek; then to Chambers Creek Above Richland Chambers Reservoir
7/25/2016	WQ0003446000	TX0108065	Obtain Water Quality Permit Renewal	Dallas	Grand Prairie	Forterra Pressure Pipe Inc	Renewal	no			From plant site via a series of abandoned borrow pits; then to Lower West Fork Trinity River
7/25/2016	WQ0010431001	TX0053571	Obtain Water Quality Permit Renewal	Ellis		City of Maypearl	Renewal	no	175,000		From plant site to a side channel; then to North Fork Chambers Creek; then to Chambers Creek Above Richland Chambers Reservoir
8/2/2016	WQ0010060005	TX0002372	Obtain Water Quality Permit Renewal	Dallas	Carrollton	City of Dallas	Renewal	no	5,000,000		From plant site via pipe directly to Elm Fork Trinity River Below Lewisville Lake
8/2/2016	WQ0010579001	TX0052949	Obtain Water Quality Permit Renewal	Kaufman	Mabank	City of Mabank	Renewal	no	400,000		From plant site to a south-flowing unnamed tributary; then to southwest flowing unnamed tributary; then to Prairie Creek; then to Cedar Creek Reservoir
8/2/2016	WQ0010649001	TX0032646	Obtain Water Quality Permit Renewal	Parker	Springtown	City of Springtown	Renewal	no	480,000		From plant site to Walnut Creek; then to Eagle Mountain Reservoir
8/2/2016	WQ0010009001	TX0024911	Obtain Water Quality Permit Renewal	Wise	Decatur	City of Decatur	Renewal	no	1,200,000		From plant site to Center Creek; then to Martin Branch; then to West Fork Trinity River Below Bridgeport Reservoir



Appendix B. TCEQ TPDES Permit Database (as of May 2017)

Source: TCEQ, NCTCOG, 2017

Date Received	Permit No.	EPA I.D. No.	Permit Intent	County	City	Name of Applicant	Permit Action	Permit Modification?	Permitted Flow (GPD)	Segment	Outfall Path
8/2/2016	WQ0010131001	TX0022632	Obtain Water Quality Permit Renewal	Wise		City of Boyd	Renewal	no	240,000		From plant site to West Fork Trinity River Below Bridgeport Reservoir
8/3/2016	WQ0004687000	TX0126268	Obtain Water Quality Permit Renewal	Dallas	Dallas	Univar USA Inc	Renewal	no			From plant site from outfall 001 via a pipeline and from outfall 003 via overland flow from a settling pond, to the city of Dallas stormwater collection system; then to a series of ditches; then to an unnamed tributary; then to Fivemile Creek; then to the Upper Trinity River
8/3/2016	WQ0014665001		Obtain Water Quality Permit Renewal (Texas Land Application Permit Renewal)	Ellis	Waxahachie	Southwest Festivals, Inc and Richard Korsh	Renewal	no	17,700		
8/3/2016	WQ0014841001	TX0129909	Obtain Water Quality Permit Renewal	Wise		Ivy Valley Utilities	Renewal	no	300,000		From plant site to West Fork Trinity River Below Bridgeport Reservoir
8/3/2016	WQ0015002001	TX0133019	Obtain Water Quality Permit Renewal	Wise		West Wise Special Utility District	Renewal	no	50,000		From plant site directly to the West Fork Trinity River Below Bridgeport Reservoir
8/11/2016	WQ0010443002	TX0047261	Obtain Water Quality Permit Amendment	Ellis	Ennis	City of Ennis	Amendment	Increase in the discharge of treated wastewater to an annual average flow of 4,000,000 GPD and the removal of cyanide and mercury limits.	4,000,000		From plant site to Cummins Creek' then to Chambers Creek Above Richland-Chambers Reservoir
8/11/2016	WQ0013910001	TX00116211	Obtain Water Quality Permit Amendment	Kaufman		Kaufman County Fresh Water Supply District No 1A	Amendment	Increase in discharge of treated wastewater at a volume not to exceed an annual average flow of 1,200,000 GPD	1,200,000		From plant site to an unnamed tributary; then to Big Brushy Creek; then to Kings Creek; then to Cedar Creek Reservoir
8/16/2016	WQ0010442001		TPDES Permit for Municipal Wastewater Renewal	Collin	Farmersville	City of Farmersville	Renewal	no	225,000	0821	Discharged to an unnamed tributary of Elm Creek; then to Elm Creek; then to Lavon Lake in Segment No. 0821 of the Trinity River Basin
8/16/2016	WQ0014192001		Water Quality Land Application Permit for Municipal Wastewater Renewal	Collin		Lake Lavon Baptist Encampment	Renewal	no	625	0821	located in the drainage basin of Lake Lavon in Segment No. 0821 of the Trinity River Basin

Appendix B. TCEQ TPDES Permit Database (as of May 2017)

Source: TCEQ, NCTCOG, 2017

Date Received	Permit No.	EPA I.D. No.	Permit Intent	County	City	Name of Applicant	Permit Action	Permit Modification?	Permitted Flow (GPD)	Segment	Outfall Path
8/16/2016	WQ0014977001		TPDES Permit for Municipal Wastewater Renewal	Wise	Rhome	Rolling V Ranch Water Control and Improvement District No. 1 of Wise County	Renewal	no	250,000	0809	discharged to Moss Branch; then to Indian Creek; then to Eagle Mountain Reservoir in Segment No. 0809 of the Trinity River Basin
8/17/2016	WQ0013904001	TX0126616	Obtain Water Quality Permit Renewal	Ellis	Midlothian	The Salvation Army	Renewal	no	50,000		From plant site to pond located on the permittee's property; then to an unnamed creek; then to an unnamed lake; then to an unnamed tributary of Armstrong Creek; then to Armstrong Creek; then to Boggy Branch; then to Cottonwood Creek; then to North Fork of Chambers Creek; then to Chambers Creek Above Richland-Chambers Reservoir
8/17/2016	WQ0014125001		Obtain Water Quality Permit (Texas Land Application Permit) Renewal	Tarrant		Aqua Texas Inc.	Renewal	no	150,000		
8/17/2016	WQ0014840001	TX0067504	Obtain Water Quality Permit Renewal	Tarrant	Fort Worth	The Fort Worth Boat Club	Renewal	no	15,800		From plant site to Eagle Mountain Reservoir
8/17/2016	WQ0010023001	TX0023787	Obtain Water Quality Permit Renewal	Wise	Chico	City of Chico	Renewal	no	150,000		From plant site to Dry Creek; then to gravel pits; then to West Fork Trinity River Below Bridgeport Reservoir
8/17/2016	WQ010701002	TX0118621	Obtain Water Quality Permit Renewal	Wise	Rhome	City of Rhome	Renewal	no	150,000		From plant site to Oates Branch; then to West Fork Trinity River Below Bridgeport Reservoir
8/22/2016	WQ0010984001	TX0022811	Obtain Water Quality Permit Renewal	Dallas	Ferris	Trinity River Authority of Texas	Renewal		24,000,000		From plant site via pipe to Ten Mile Creek; then to Upper Trinity River
8/22/2016	WQ0011103001	TX0021717	Obtain Water Quality Permit Renewal	Ellis		Forreston Sewer Service and Water Supply Corporation	Renewal	no	40,000		From plant site to Mill Branch; then to Chambers Creek Above Richland Chambers Reservoir

Appendix B. TCEQ TPDES Permit Database (as of May 2017)

Source: TCEQ, NCTCOG; 2017

Date Received	Permit No.	EPA I.D. No.	Permit Intent	County	City	Name of Applicant	Permit Action	Permit Modification?	Permitted Flow (GPD)	Segment	Outfall Path
8/22/2016	WQ0013834001	TX0099732	Obtain Water Quality Permit Amendment	Parker	Willow Park	City of Willow Park	Amendment	increase the discharge of treated wastewater to a volume not to exceed a daily average flow of 342,000 gpd	342,000		From plant site via pipeline to Clear Fork Trinity River Below Lake Weatherford
8/24/2016	WQ0014484001	TX0120022	Obtain Water Quality Permit Renewal	Denton	Roanoke	Northlake Partners, Ltd	Renewal	no	25,000		From plant site to a drainage ditch; then to an unnamed tributary; then to Elizabeth Creek; then to Denton Creek; Then to Grapevine Lake
8/24/2016	WQ0010611002	TX0106291	Obtain Water Quality Permit Renewal	Johnson	Keene	City of Keene	Renewal	no	830,000		From plant site to Turkey Creek; then to Lake Alvarado; then to Turkey Creek; then to North Fork Chambers Creek; then to Chambers Creek Above Richland-Chambers Reservoir
8/29/2016	WQ0014486001		TPDES Permit for Municipal Wastewater Renewal	Collin	Anna	Collin County and Young Men's Christian Association of Metropolitan Dallas	Renewal	no	32,000	0821	Discharged to an unnamed tributary; then to Elm Grove Creek; then to an unnamed lake; then to Elm Grove Creek; then to Lavon Lake in Segment No. 0821 of the Trinity River Basin
9/2/2016	WQ0013401001		Obtain Water Quality Permit Renewal (Texas Land Application Permit Renewal)	Denton	Argyle	A&D Corley Enterprises, Ltd	Renewal	no	5,000		
9/2/2016	WQ0004112000	TX0118745	Obtain Water Quality Permit Renewal	Ellis	Waxahachie	Matheson Tri-Gas Inc	Renewal	no	40,000		From plant site to Mustang Creek; then to Bardwell Reservoir
9/12/2016	WQ0013920001	TX0119202	Obtain Water Quality Permit Renewal	Denton		Aviation Utilities Services, Inc	Renewal	no	90,000		From plant site to Cleveland Branch; then to Centon Creek; then to Grapevine Lake
9/12/2016	WQ0001178000		Obtain Water Quality Permit Renewal	Ellis	Waxahachie	Owens Corning Insulating Systems, LLC	Renewal	no			From plant site to an unnamed drainage ditch; then to Mustang Creek; then to Bardwell Reservoir
9/12/2016	WQ0012909001	TX0097853	Obtain Water Quality Permit Renewal	Tarrant	Fort Worth	Eagle Mountain RV Park, LLC	Renewal	no	6,000		From plant site to Eagle Mountain Reservoir
9/12/2016	WQ0011626001	TX0057231	Obtain Water Quality Permit Renewal	Wise	Newark	City of Newark	Renewal	no	150,000		From plant site via outfall 001 to a series of wetland ponds; then to an unname tributary;

Appendix B. TCEQ TPDES Permit Database (as of May 2017)

Source: TCEQ, NCTCOG; 2017

Date Received	Permit No.	EPA I.D. No.	Permit Intent	County	City	Name of Applicant	Permit Action	Permit Modification?	Permitted Flow (GPD)	Segment	Outfall Path
9/19/2016	WQ0012051001	TX0057959	Obtain Water Quality Permit Renewal	Collin	Wylie	Collin Park Marina	Renewal	no	20,000		From plant site directly to Lavon Lake
9/19/2016	WQ0010180001	TX0024503	Obtain Water Quality Permit Renewal	Johnson	Grandview	City of Grandview	Renewal	no	300,000		From plant site to Island Creek; then to South Fork Chambers Creek; then to Chambers Creek Above Richland Chambers Reservoir
9/19/2016	WQ0013376001	TX0102806	Obtain Water Quality Permit Renewal	Johnson	Burleson	S&K Oakridge Square Properties	Renewal	no	19,500		From plant site to an unnamed tributary; then to Quil Miller Creek; then to Village Creek; then to Lake Arlington
10/3/2016	WQ0011283001	TX0056677	Obtain Water Quality Permit Renewal	Collin	Anna	City of Anna	Renewal	no	1,225,000		From plant site via outfall 001 and 002 to an unnamed tributary; then to Slayter Creek; then to Throckmorton Creek; then to East Fork Trinity River; then to Lake Lavon
10/3/2016	WQ0004161000	TX0119784	Obtain Water Quality Permit Renewal	Dallas	Dallas	FPG CT Owner	Renewal	no	155,000		From plant site to a City of Dallas municipal storm sewer; then to an unnamed ditch; then to the Upper Trinity River
10/3/2016	WQ0004927000	TX0127779	Obtain Water Quality Permit Renewal	Dallas	Dallas	Dallas 2100 Ross, LP	Renewal	no	29,100		From plant site via City of Dallas Municipal Separate Storm Sewer System (MS4) to an unnamed tributary; then to Upper Trinity River
10/3/2016	WQ0011286001	TX0103624	Obtain Water Quality Permit Renewal	Kaufman	Terrell	Chhotubhai Thakorbbhai Patel	Renewal	no	25,000		From plant site to an unnamed pond; then to an unnamed drainage swale; then to Big Brushy Creek; then to Kings Creek; then to Cedar Creek Reservoir
10/3/2016	WQ0013427001	TX0122386	Obtain Water Quality Permit Renewal	Wise	Paradise	Camp Summit, Inc	Renewal	no	8,020		From plant site to an unnamed tributary; then to Garrett Creek; then to West Fork Trinity River Below Bridgeport Reservoir
10/3/2016	WQ0014910001	TX0119687	Obtain Water Quality Permit Renewal	Wise		Aqua Texas Inc.	Renewal	no	450,000		From plant site to an unnamed tributary; then to Indian Creek; then to Eagle Mountain Reservoir
10/7/2016	WQ0014817001	TX0129704	Obtain Water Quality Permit Renewal	Denton		Talley Land Development Ltd	Renewal	no	1,200,000		From plant site via a pipe to Little Elm Creek; then to Lewisville Lake

Appendix B. TCEQ TPDES Permit Database (as of May 2017)

Source: TCEQ, NCTCOG; 2017

Date Received	Permit No.	EPA I.D. No.	Permit Intent	County	City	Name of Applicant	Permit Action	Permit Modification?	Permitted Flow (GPD)	Segment	Outfall Path
10/12/2016	WQ0014628001	TX0032212	Obtain Water Quality Permit Renewal	Dallas	Dallas	D-Bar-B Water-Wastewater Supply Corporation	Renewal	no	24,000		From plant site to an unnamed borrow pit pond; thjen to a roadside ditch; then to Trinity River Floodplain ponds and wetlands; then to Upper Trinity River
10/12/2016	WQ0001214000	TX0000825	Obtain Water Quality Permit Amendment	Wise	Chico	Hanson Aggregates LLC	Amendment	authorize adding a pond			From plant site via outfalls 001 and 002 to an unnamed tributary of Dry Creek; then to Dry Creek; then to West Fork Trinity River Below Bridgeport Reservoir
10/28/2016	WQ0012114001	TX0079391	Obtain Water Quality Permit Renewal	Kaufman	Kaufman	City of Kaufman	Renewal	no	1,200,000		From plant site to Prairie Branch; then to Big Cottonwood Creek; then to Kings Creek; then to Cedar Creek Reservoir
11/7/2016	WQ0014935001	TX0129089	Obtain Water Quality Permit Renewal	Collin		Wylie Northeast Special Utility District	Renewal	no	300,000		From plant site to an unnamed ditch; then to a wetland; then to an unnamed tributary; then to Lavon Lake
11/7/2016	WQ0010887002	TX0137332	Obtain Water Quality Permit New	Hunt		City of Josephine	New	no	1,500,000		From plant site via pipe to Brushy Creek; then to West Caddo Creek; then to Lake Tawakoni
11/7/2016	WQ0010695002	TX0137324	Obtain Water Quality Permit New	Kaufman	Kemp	City of Kemp	New	no	45,000		From plant site via pipeline to Cedar Creek Reservoir
11/21/2016	WQ003446000		TPDES Permit for Industrial Wastewater Renewal	Dallas	Grand Prairie	Forterra Pressure Pipe Inc	Renewal	no		0841	Discharged to a series of abandoned borrow pits; then to Lower West Trinity River in Segment No. 0841 of the Trinity River Basin
11/21/2016	WQ0010361001	TX0022659	Obtain Water Quality Permit Renewal	Denton	Pilot Point	City of Pilot Point	Renewal	no	735,000		From plant site to an unnamed tributary; then to Ray Roberts Lake
11/21/2016	WQ0014795001	TX0026603	Obtain Water Quality Permit Renewal	Ellis	Palmer	City of Palmer	Renewal	no	226,000		From plant site to an unnamed tributary (locally known as Artesian Branch); then to Grove Creek; then to Upper Trinity River
11/21/2016	WQ0014471001	TX0126128	Obtain Water Quality Permit Renewal	Kaufman	Scurry	Scurry-Rosser Independent School District	Renewal	no	40,000		From plant site to an unnamed tributary of Cottonwood Creek; then to Cottonwood Creek; then to Rosser-Trinidad Lake; then to Cottonwood Creek; then to Upper Trinity River

Appendix B. TCEQ TPDES Permit Database (as of May 2017)

Source: TCEQ, NCTCOG; 2017

Date Received	Permit No.	EPA I.D. No.	Permit Intent	County	City	Name of Applicant	Permit Action	Permit Modification?	Permitted Flow (GPD)	Segment	Outfall Path
11/21/2016	WQ0014198001	TX0123145	Obtain Water Quality Permit Amendment	Parker	Weatherford	City of Weatherford Municipal Utility Board of Trustees	Amendment	authorize the addition of proposed outfalls 002 and 003 and increasing the discharge of treated wastewater to a volume not to exceed an annual average flow of 1,000,000 gpd.	1,000,000		The proposed discharge routs are via proposed outfall 002 from the facility via pipe to Lake Weatherford and, from proposed outfall 003, from the facility via pipe to a series of irrigation ponds; then to an unnamed creek; then to Clear Fork Trinity River Below Lake Weatherford
11/21/2016	WQ0005212000	TX0137375	Obtain Water Quality Permit New	Somervell	Glen Rose	Lattimore Materials Corp	New	no	9,360,000		From plant site to ephemeral unnamed tributaries of the Brazos River
12/5/2016	WQ0010060097	TX0002381	Obtain Water Quality Permit Renewal	Dallas	Dallas	City of Dallas	Renewal	no	15,000,000		From plant site to Bachman Creek; then to Elm Fork Trinity River Below Lewisville Lake
12/5/2016	WQ0012605002	TX0091448	Obtain Water Quality Permit Renewal	Denton	Argyle	Briarwood Lutheran Ministries	Renewal	no	5,000		From plant site to Poindexter Branch; then to Lewisville Lake
12/5/2016	WQ0010745001	TX0023027	Obtain Water Quality Permit Renewal	Navarro	Kerens	City of Kerens	Renewal	no	210,000		From plant site to an unnamed tributary; then to Rush Creek; then to Trinity River Above Lake Livingston
12/5/2016	WQ0015514001	TX0137367	Obtain Water Quality Permint New	Tarrant	Mansfield	Marline Treatment, LLC	New	no	25,000		From plant site via a pipe to Willow Branch; then to Walnut Creek
12/9/2016	WQ0013434001	TX0103276	Obtain Water Quality Permit Renewal	Denton	Frisco	City of Hackberry	Renewal	no	580,000		From plant site to an unnamed ditch; then to Lewisville Lake
12/19/2016	WQ0011704001		Obtain Water Quality Permit Renewal (Texas Land Application Permit	Palo Pinto		Texas Parks and Wildlife Department	Renewal	no	5,000		
12/20/2016	WQ0010701002		TPDES Permit for Municipal Wastewater Renewal	Wise		City of Rhome	Renewal	no	150,000	0810	Discharged to Oates Branch; then to West fork Trinity River Below Bridgeport Reservoir in Segment No. 0810 of the Trinity River Basin
12/21/2016	WQ0010567002	TX0126179	Obtain Water Quality Permit Renewal	Johnson	Alvarado	City of Alvarado	Renewal	no	600,000		From plant site via pipe to North Fork Chambers Creek; then to Chambers Creek Above Richland-Chambers Reservoir
1/19/2017	WQ0015536001	TX0137464	Obtain Water Quality Permit	Denton	Aubrey	Mustang Special Utility District	New	no	15,000,000		Discharge route is from the plant site directly into Little Elm Creek; thence to Lewisville Lake.

Appendix B. TCEQ TPDES Permit Database (as of May 2017)

Source: TCEQ, NCTCOG; 2017

Date Received	Permit No.	EPA I.D. No.	Permit Intent	County	City	Name of Applicant	Permit Action	Permit Modification?	Permitted Flow (GPD)	Segment	Outfall Path
1/19/2017	WQ0010177001		TPDES Permit Minor Amendment for Municipal Wastewater	Somervell	Glen Rose	City of Glen Rose	Amendment	yes	1,000,000	1229	Discharged via Outfall 001 to an unnamed tributary; thence to Van Zant Branch; thence to Paluxy River/North Paluxy River in Segment No. 1229 of the Brazos River Basin
1/30/2017	WQ0010326002	TX0137405	Obtain Water Quality Permit	Palo Pinto	Strawn	City of Strawn	New	no	250,000		Discharge route from the plant site to Palo Pinto Creek; thence to Lake Palo Pinto
2/6/2017	WQ0013439001	TX0103446	Obtain Water Quality Permit Renewal	Wise	Paradise	Paradise Independent School District	Renewal	no	30,000		Discharge route is from the plant site to an unnamed tributary; thence to the West Fork Trinity River Below Bridgeport Reservoir
2/23/2017	WQ0011516001		Obtain Water Quality Permit Renewal	Navarro	Corsicana	Town of Mustang	Renewal	no	10,000		Discharge route is from the plant site to a pond; thence to an unnamed tributary; thence to Grape Creek; thence to Richland-Chambers Reservoir
2/27/2017	WQ0001250000		TPDES Permit for Wastewater Minor Amendment	Dallas	Dallas	Mountain Creek Power LLC	Minor Amendment	yes	927,000,000	0841	Discharged to Mountain Creek Lake; thence to Mountain Creek; thence to Lower West Fork Trinity River in Segment No. 0841 of the Trinity River Basin
3/1/2017	WQ001383001	TX0099732	Obtain Water Quality Permit Amendment	Parker	Willow Park	City of Willow Park	Amendment	yes	500,000		Discharge routed from the plant site via pipe to Clear Fork Trinity Below Lake Weatherford
4/11/2017	WQ0015551001		Obtain Water Quality Permit	Denton	Dallas	HB Gibbs, LP	New	no	880,000	76247	Discharged from the plant site to Tributary 7.1 of Denton Creek; thence to Tributary 7 of Denton Creek; thence to Denton Creek; thence to Grapevine Lake
4/11/2017	WQ0000552000		TPDES Permit for Minor Industrial Wastewater Minor Amendment	Tarrant	Fort Worth	Handley Power LLC	Amendment	yes	1,280,000,000	0828	discharged directly to Lake Arlington in Segment No. 0828 of the Trinity River Basin
4/13/2017	WQ0010662001	TX0052892	Obtain Water Quality Permit	Denton	Lewisville	City of Lewisville	Renewal	no	18,000,000		Discharge route if from the plant site to Prairie Creek; thence to Elm Fork Trinity River Below Lewisville Lake

**Appendix B. TCEQ TPDES Permit Database (as of May 2017)**

Source: TCEQ, NCTCOG, 2017

Date Received	Permit No.	EPA I.D. No.	Permit Intent	County	City	Name of Applicant	Permit Action	Permit Modification?	Permitted Flow (GPD)	Segment	Outfall Path
4/25/2017	WQ0015565001	TX0137642	Obtain Water Quality Permit	Collin	Weston	East Fork Partners LLC	New	no	2,500,000		Discharge is routed from the plant site to an unnamed tributary of Honey Creek; thence to Honey Creek; thence to East Fork Trinity River; thence to Lake Lavon.
4/25/2017	WQ0005116000		Obtain Water Quality Permit Renewal	Ellis	Midlothian	Buckley Oil Company	renewal	no	Variable		Discharge route is from the plant site to a series of drainage ditches; thence to Soap Creek; thence to Joe Pool Lake.



**Appendix C. January 2016 – December 2016 Discharge Monitoring Report Data for the NCTCOG Region**

Appendix C. January 2016 - December 2016 Discharge Monitoring Report Data for the NCTCOG Region

Source: EPA ECHO Facilities Search; TCEQ 2016

EPA ID No. (NPDES Permit No.)	TPDES Permit No.	Facility Type	Permitted Facility	County	Facility Design Flow (MGD) *May reflect old design flows for some facilities	Actual average facility flow (MGD)	Current Permit Issue Date	Current Permit Status	Last Inspection	SIC Code	Monitoring Parameter	Outfall	Annual Average Flow (MGD)	Annual Average of Daily Maximum Flow (MGD)	Annual Average 2 Hour Peak Flow (gal/min)	Average of Annual Average (MGD)
TX0127345	14577001	Minor	Bear Creek WWTP	Collin	0.25	0.25	1/13/2017	Effective	n/a	4952	Flow, in conduit or thru treatment plant	001A	0.190	0.298	No Data	No Data
TX0135020	11516001	Minor	CHM Park WWTP	Collin	0.025	n/a	10/9/2014	Effective	n/a	6515	Flow, in conduit or thru treatment plant	001A	0.012	3410.9449	No Data	No Data
TX0026808	10039001	Minor	City Of Blue Ridge WWTP	Collin	0.14	0.28	6/12/2014	Effective	5/23/2014	4952	Flow, in conduit or thru treatment plant	001A	0.827	0.131	No Data	No Data
TX0023272	14246001	Minor	City Of Celina WWTP	Collin	0.5	0.95	8/10/2016	Effective	7/25/2016	4952	Flow, in conduit or thru treatment plant	001A	0.496	1.224	No Data	No Data
TX0027502	10887001	Minor	City Of Josephine WWTP	Collin	0.07	0.07	3/18/2016	Effective	4/15/2015	4952	Flow, in conduit or thru treatment plant	001A	0.057	0.170	No Data	No Data
TX0057959	12051001	Minor	Collin Park Marina WWTP	Collin	n/a	0.02	10/4/2011	Admin Continued	7/4/2014	7033	Flow, in conduit or thru treatment plant	001A	0.002	0.005	No Data	No Data
TX0027723	10172002	Minor	Cottonwood Creek WWTP	Collin	0.3	0.3	10/10/2016	Effective	2/5/2015	4952	Flow, in conduit or thru treatment plant	001A	0.175	0.267	No Data	No Data
TX0076091	10442001	Minor	Farmersville WWTP	Collin	0.225	0.225	10/25/2016	Effective	n/a	4952	Flow, in conduit or thru treatment plant	001A	No Discharge	No Discharge	No Data	No Data
TX0103497	10442002	Minor	Farmersville WWTP Unit 2	Collin	0.53	0.53	12/12/2016	Effective	n/a	4952	Flow, in conduit or thru treatment plant	001A	0.357	0.942	No Data	No Data
TX0002143	10481001	Minor	North Texas MWD WWTF	Collin	n/a	n/a	n/a	n/a	n/a	n/a	Flow, in conduit or thru treatment plant	001A	No Discharge	No Discharge	No Data	No Data
												002A	0.050	0.190	No Data	No Data
												003A	0.005	0.160	No Data	No Data
												004A	0.005	0.140	No Data	No Data
												005A	No Discharge	No Discharge	No Data	No Data
												006A	0.150	0.150	No Data	No Data
												007A	0.145	0.150	No Data	No Data
												101A	0.150	No Data	No Data	No Data
TX0024988	11451001	Minor	Seis Lagos WWTP	Collin	0.25	0.25	10/10/2016	Effective	7/14/2014	4952	Flow, in conduit or thru treatment plant	001A	0.131	0.263	No Data	No Data
TX0056677	11283001	Minor	Slayter Creek WWTP	Collin	0.25	n/a	7/11/2012	Admin Continued	2/15/2005	4952	Flow, in conduit or thru treatment plant	001A	No Discharge	No Discharge	No Data	No Data
												002A	0.434	0.665	No Data	No Data
TX0047911	10363001	Major	North Texas Municipal Water District - Rowlett Creek WWTP	Collin	24	n/a	1/23/2017	Effective	1/14/2016	4952	Flow, in conduit or thru treatment plant	001A	17.742	29.142	28395.667	19.292
TX0088633	12446001	Major	Wilson Creek Regional WWTF	Collin	24	64	9/11/2014	Admin Continued	7/12/2016	4952	Flow, in conduit or thru treatment plant	001A	47.983	77.733	73746.500	51.642
TX0025950	10384001	Major	Wylie WWTP	Collin	2	n/a	9/30/2008	Admin Continued	7/22/2015	4952	Flow, in conduit or thru treatment plant	001A	No Discharge	No Discharge	No Discharge	No Discharge
TX0032212		Minor	D Bar B WWTP	Dallas	n/a	0.024	3/26/2013	Admin Continued	03/24/2016	6515	Flow, in conduit or thru treatment plant	001A	0.001	0.004	No Data	No Data
TX0047830	10060001	Major	Central WWTF	Dallas	150	200	1/12/2017	Effective	03/23/2016	4952	Flow, in conduit or thru treatment plant	001A	97.692	151.625	133622.667	110.058
TX0024678	10090001	Major	City Of Garland - Duck Creek WWTP	Dallas	40	n/a	10/10/2008	Admin Continued	4/16/2015	4952	Flow, in conduit or thru treatment plant	001A	16.48	36.821	No Data	29371.917
TX0023931	10257001	Major	Floyd Branch Regional WWTP	Dallas	4.75	4.75	11/30/2016	Effective	05/10/2016	4952	Flow, in conduit or thru treatment plant	001A	2.478	4.323	4380.091	2.835
TX0123561	14216001	Major	Muddy Creek Regional WWTP	Dallas	10	20	12/02/2015	Effective	05/03/2016	4952	Flow, in conduit or thru treatment plant	001B	6.617	10.748	11930	7.35
TX0047431	10221001	Major	South Mesquite Creek WWTP	Dallas	25	n/a	2/24/2012	Admin Continued	06/02/2015	4952	Flow, in conduit or thru treatment plant	001A	19.683	33.117	32267.167	21.017
TX0047848	10060006	Major	Southside WWTR	Dallas	110	110	3/17/2015	Effective	05/28/2015	4952	Flow, in conduit or thru treatment plant	001A	66.167	95.167	77291.667	73.9
TX0022802	10303001	Major	Trinity River Authority - Central Regional WWTF	Dallas	162	n/a	2/4/2008	Admin Continued	7/21/2016	4952	Flow, in conduit or thru treatment plant	001A	153.688	196.124	153741.750	167.399
TX0022811	10984001	Major	Trinity River Authority - Ten Mile Creek WWTP	Dallas	24	n/a	5/22/2013	Admin Continued	08/04/2016	4952	Flow, in conduit or thru treatment plant	001A	15.526	27.672	23828.917	18.532
TX0056588	13647001	Minor	Aubrey WWTF	Denton	0.4	n/a	11/30/2016	Effective	09/21/2016	4952	Flow, in conduit or thru treatment plant	001A	0.290	0.509	No Data	No Data
TX0103276	13434001	Minor	City Of Hackberry WWTP	Denton	0.13	n/a	02/28/2014	Admin Continued	07/21/2016	4952	Flow, in conduit or thru treatment plant	001A	0.262	0.386	No Data	No Data
TX0022501	11312001	Minor	City Of Justin WWTP	Denton	0.6	0.8	9/15/2016	Effective	09/07/2016	4952	Flow, in conduit or thru treatment plant	001A	0.285	0.612	No Data	No Data
TX0024198	10729001	Minor	City Of Krum WWTF	Denton	0.7	n/a	12/13/2016	Effective	10/08/2015	4952	Flow, in conduit or thru treatment plant	001A	0.118	0.251	No Data	No Data
TX0022659	10361001	Minor	City Of Pilot Point WWTP	Denton	0.735	n/a	12/16/2011	Admin Continued	07/09/2003	4952	Flow, in conduit or thru treatment plant	001A	0.313	0.627	No Data	No Data
TX0022403	14372001	Minor	City Of Sanger WWTP	Denton	0.98	0.98	10/13/2016	Effective	09/28/1984	4952	Flow, in conduit or thru treatment plant	001A	0.652	1.118	No Data	No Data
TX0093696		Minor	Hidden Cove Park WWTP	Denton	n/a	0.016	12/16/2011	Admin Continued	12/04/2012	7033	Flow, in conduit or thru treatment plant	001A	0.005	0.010	No Data	No Data
TX0120022		Minor	Northlake Village MHP WWTP	Denton	n/a	0.025	9/30/2013	Admin Continued	11/01/2013	6515	Flow, in conduit or thru treatment plant	001A	0.009	0.012	No Data	No Data
TX0124745	14323001	Minor	Peninsula Reg Water Rec Plant	Denton	2	n/a	12/27/2016	Effective	1/12/2016	4952	Flow, in conduit or thru treatment plant	001A	0.369	0.556	No Data	No Data
TX0119849	10027004	Minor	Robson Ranch WWTP	Denton	0.25	n/a	1/8/2015	Effective	n/a	4952	Flow, in conduit or thru treatment plant	001A	0.207	0.332	No Data	No Data
TX0123552		Minor	Rocky Point Estates MHP WWTP	Denton	0.06	0.06	10/8/2015	Effective	10/06/2015	6515	Flow, in conduit or thru treatment plant	001A	0.018	0.041	No Data	No Data
TX0122661		Minor	Shale Creek WWTP	Denton	n/a	0.165	9/20/2016	Effective	07/21/2014	4952	Flow, in conduit or thru treatment plant	001A	0.088	8.287	No Data	No Data

Note: Data may be skewed high due to heavy rainfall patterns and high flows during calendar year 2016.





Appendix C. January 2016 - December 2016 Discharge Monitoring Report Data for the NCTCOG Region

Source: EPA ECHO Facilities Search; TCEQ 2016

EPA ID No. (NPDES Permit No.)	TPDES Permit No.	Facility Type	Permitted Facility	County	Facility Design Flow (MGD) *May reflect old design flows for some facilities	Actual average facility flow (MGD)	Current Permit Issue Date	Current Permit Status	Last Inspection	SIC Code	Monitoring Parameter	Outfall	Annual Average Flow (MGD)	Annual Average of Daily Maximum Flow (MGD)	Annual Average 2 Hour Peak Flow (gal/min)	Average of Annual Average (MGD)
TX0047414	10585001	Major	Pollard Creek WWTP	Palo Pinto	2.35	2.35	5/7/2014	Effective	04/05/2016	4952	Flow, in conduit or thru treatment plant	001A	1.507	3.519	3090.333	1.647
TX0027120	10847001	Minor	City Of Aledo WWTP	Parker	0.6	0.6	10/10/2016	Effective	06/10/2014	4952	Flow, in conduit or thru treatment plant	001A	0.306	0.551	No Data	No Data
TX0032646	10649001	Minor	City Of Springtown WWTP	Parker	0.48	n/a	1/20/2017	Effective	02/24/2016	4952	Flow, in conduit or thru treatment plant	001A	0.403	0.744	No Data	No Data
TX0117919		Minor	Cowtown RV Park WWTF	Parker	0.0216	0.0216	12/12/2016	Effective	09/15/2011	7033	Flow, in conduit or thru treatment plant	001A	0.005	0.011	No Data	No Data
TX0122271		Minor	Sugartree WWTF	Parker	0.15	0.038	7/31/2014	Effective	02/17/2016	4952	Flow, in conduit or thru treatment plant	001A	0.012	0.031	No Data	No Data
TX0099732	13834001	Minor	Willow Park WWTP	Parker	0.3	n/a	12/5/2011	Admin Continued	06/23/2016	4952	Flow, in conduit or thru treatment plant	001A	0.211	0.313	No Data	No Data
TX0047724	10380002	Major	City Of Weatherford WWTP	Parker	4.5	n/a	5/30/2012	Admin Continued	03/31/2016	4952	Flow, in conduit or thru treatment plant	001A	2.301	3.310	3532	2.326
TX0023779	10585004	Major	Willow Creek WWTP	Parker	51.26	1.26	5/29/2014	Effective	11/18/2015	4952	Flow, in conduit or thru treatment plant	001A	0.143	0.615	41.492	0.156
TX0021687	10366001	Minor	Royse City WWTF	Rockwall	0.5	0.5	3/14/2016	Effective	11/04/2015	4952	Flow, in conduit or thru treatment plant	001A	No Discharge	No Discharge	No Data	No Data
TX0078565	12047001	Major	Buffalo Creek WWTP	Rockwall	2.25	n/a	11/20/2012	Admin Continued	06/06/2016	4952	Flow, in conduit or thru treatment plant	001A	1.497	2.24	2211.833	1.618
TX0126110	14469001	Major	Sabine Creek Regional WWTP	Rockwall	3	5	05/31/2016	Effective	06/04/2015	4952	Flow, in conduit or thru treatment plant	001A	1.408	2.775	2951.833	1.483
TX0022241	10262001	Major	Squabble Creek WWTF	Rockwall	1.2	n/a	10/12/2012	Admin Continued	05/05/2016	4952	Flow, in conduit or thru treatment plant	001A	0.825	1.617	1968.167	0.825
TX0033316	10177001	Minor	City Of Glen Rose WWTP	Somervell	0.6	n/a	5/21/2014	Effective	03/17/2016	4952	Flow, in conduit or thru treatment plant	001A	0.216	0.371	No Data	No Data
TX0135373		Minor	Fossil Rim Wildlife Center WWTP	Somervell	n/a	n/a	1/22/2015	Effective	n/a	4952	Flow, in conduit or thru treatment plant	001A	0.001	0.003	No Data	No Data
TX0066702		Minor	Riverbend Retreat Center - WWTP	Somervell	0.06	0.06	7/22/2014	Effective	10/23/2013	4952	Flow, in conduit or thru treatment plant	001A	0.277	0.535	No Data	No Data
TX0131911	48770001	Minor	Somervell County WWTP	Somervell	n/a	0.15	6/12/2014	Effective	n/a	4952	Flow, in conduit or thru treatment plant	001A	0.143	0.168	No Data	No Data
TX0133116		Minor	Abraxas WWTF	Tarrant	0.02	0.02	06/15/2015	Effective	07/26/2016	4952	Flow, in conduit or thru treatment plant	001A	No Data	No Data	No Data	No Data
TX0119687		Minor	Chisholm Springs WWTP	Tarrant	n/a	0.225	01/12/2012	Admin Continued	05/21/2015	4952	Flow, in conduit or thru treatment plant	004A	0.153	0.494	805.632	0.229
TX0097853		Minor	Eagle Mountain RV Park WWTP	Tarrant	n/a	0.006	01/30/2012	Admin Continued	05/12/2016	7033	Flow, in conduit or thru treatment plant	001A	0.003	0.006	No Data	No Data
TX0105872		Minor	Mayfair Addition WWTP	Tarrant	0.0963	0.0963	12/12/2016	Effective	06/24/2014	4952	Flow, in conduit or thru treatment plant	001A	0.043	0.085	No Data	No Data
TX0066745		Minor	St. Francis Village WWTP	Tarrant	0.085	0.085	09/23/2016	Effective	11/10/2015	4952	Flow, in conduit or thru treatment plant	001A	0.012	0.1	No Data	No Data
TX0093092		Minor	Stonetown Benbrook WWTP	Tarrant	0.035	0.035	10/13/2016	Effective	03/18/2014	6515	Flow, in conduit or thru treatment plant	001A	0.023	0.039	No Data	No Data
TX0023116	11183003	Major	Ash Creek WWTP	Tarrant	1.44	n/a	1/30/2017	Effective	11/12/2014	4952	Flow, in conduit or thru treatment plant	003A	89.019	113.543	1305.597	0.938
TX0032018	10486002	Major	Peach Street WWTP	Tarrant	5.75	5.75	9/23/2016	Effective	03/10/2015	4952	Flow, in conduit or thru treatment plant	001A	3.251	3.994	4309.5	3.606
TX0047295	10494013	Major	Village Creek WWTF	Tarrant	166	n/a	12/29/2011	Admin Continued	07/07/2016	4952	Flow, in conduit or thru treatment plant	001A	113.917	165.5	136131.417	123.333
TX0023787	10023001	Minor	Chico WWTF	Wise	0.076	n/a	7/31/2013	Admin Continued	11/14/2013	4952	Flow, in conduit or thru treatment plant	001A	0.110	0.234	No Data	No Data
TX0057631	14339001	Minor	City Of Alvord WWTP	Wise	0.112	0.112	12/12/2016	Effective	04/21/2015	4952	Flow, in conduit or thru treatment plant	001A	0.081	0.173	No Data	No Data
TX0022632	10131001	Minor	City Of Boyd WWTP	Wise	0.24	n/a	1/30/2017	Effective	03/23/2016	4952	Flow, in conduit or thru treatment plant	001A	0.151	0.246	No Data	No Data
TX0132411		Minor	City Of Bridgeport WWTP	Wise	0.84	n/a	12/23/2014	Effective	09/22/2011	4952	Flow, in conduit or thru treatment plant	001A	0.72	1.283	No Data	No Data
TX0057231	11626001	Minor	City Of Newark WWTF	Wise	0.1	n/a	12/30/2011	Admin Continued	02/11/2016	4952	Flow, in conduit or thru treatment plant	002A	0.061	0.131	No Data	No Data
TX0026689	10862001	Minor	City Of Runaway Bay WWTP	Wise	0.4	n/a	12/19/2016	Effective	02/26/2013	4952	Flow, in conduit or thru treatment plant	001A	0.174	0.4	No Data	No Data
TX0024783	10701001	Minor	Rhome WWTF	Wise	0.1	0.1	10/10/2016	Effective	10/16/2013	4952	Flow, in conduit or thru treatment plant	001A	0.094	No Data	No Data	No Data
TX0118621	10701002	Minor	Westside WWTF	Wise	0.15	n/a	12/13/2013	Admin Continued	07/09/2015	4952	Flow, in conduit or thru treatment plant	001A	0.093	0.042	No Data	No Data
TX0024911	10009001	Major	City Of Decatur WWTP	Wise	1.2	n/a	12/16/2011	Admin Continued	04/20/2016	4952	Flow, in conduit or thru treatment plant	001A	0.817	1.124	826.667	0.862

Note: Data may be skewed high due to heavy rainfall patterns and high flows during calendar year 2016.

**Appendix D. Water Districts in the NCTCOG Region**

**Appendix D. Water Districts in the NCTCOG Region by County**

Source: TCEQ, 2017

Water Distrcit Name	Type	County
Collin County WCID 3	WCID	Collin
Lakehaven MUD	MUD	Collin
Lavon Special Utility District	SUD	Collin
Collin County MUD 1	MUD	Collin
East Fork SUD	SUD	Collin
Frisco Square Management District	MMD	Collin
McKinney MUD 1 of Collin County	MUD	Collin
McKinney MUD 2 of Collin County	MUD	Collin
East Fork FWSD 1	FWSD	Collin
Seis Lagos Utility District	MUD	Collin
North Texas MWD	RA	Collin
Wilmer MUD 1	MUD	Dallas
Dallas County FCD 1	WID	Dallas
Valwood Improvement Authority	LID	Dallas
Dallas County Utility & Reclamation District	RA	Dallas
Trinity River Authority of Texas	RA	Dallas
Dallas County Improvement District	MUD	Dallas
Northwest Dallas County FCD	LID	Dallas
North Oak Cliff Municipal Management District	MMD	Dallas
Irving Flood Control District Section 1	LID	Dallas
Irving Flood Control District Section 3	LID	Dallas
Dallas County Park Cities MUD	MUD	Dallas
Falcons Lair Utility & Reclamation District	MUD	Dallas
Mesquite Medical Center Management District	MMD	Dallas
Grand Prairie Metropolitan Utility & Reclamation District	OTH	Dallas
Rockett SUD	SUD	Dallas
Lancaster MUD 1	MUD	Dallas
Dallas County LID14	LID	Dallas
Denton County Reclamation & Road District	OTH	Denton
Denton County FWSD 1-C	FWSD	Denton
Talley Ranch WCID 1 of Denton County	WCID	Denton
Mobberly MUD	MUD	Denton
Highway 380 MMD 1	MMD	Denton
The Lakes FWSD of Denton County	FWSD	Denton
Denton County FWSD 8-C	FWSD	Denton
Belmont FWSD 1 of Denton County	FWSD	Denton
Canyon Falls MUD 1	MUD	Denton
Trophy Club MUD 1	MUD	Denton
Canyon Falls WCID 2	WCID	Denton
Tradition MUD 2 of Denton County	MUD	Denton
Smiley Road WCID	WCID	Denton
Valencia on the Lake WCID	WCID	Denton
Belmont FWSD 2 of Denton County	FWSD	Denton
Denton County LID 1	LID	Denton
Denton County MUD 4	MUD	Denton
Alpha Ranch WCID	WCID	Denton
Tradition MUD 1 of Denton County	MUD	Denton
Oak Point WCID 2	MUD	Denton

**Appendix D. Water Districts in the NCTCOG Region by County**

Source: TCEQ, 2017

Water District Name	Type	County
Lakeside Utility & Reclamation District	MUD	Denton
Denton County FWSD 1-D	FWSD	Denton
Upper Trinity Regional Water District	OTH	Denton
Southwest Denton County Road & Utility Dist	MUD	Denton
Denton County MUD 6	MUD	Denton
Denton County MUD 7	MUD	Denton
Denton County FWSD 7	FWSD	Denton
Prosper Management District 1	MMD	Denton
Four Seasons Ranch MUD 1	MUD	Denton
Lake Cities Municipal Utility Authority	OTH	Denton
Denton County MUD 8	MUD	Denton
Denton County FWSD 1-A	FWSD	Denton
Denton County FWSD 8-B	WCID	Denton
Denton County Road Utility District 1	OTH	Denton
Meadow Road Improvement District	WID	Denton
Denton County FWSD 1-E	FWSD	Denton
Denton County FWSD 1-B	FWSD	Denton
Denton County FWSD 1-G	FWSD	Denton
Denton County FWSD 11-B	FWSD	Denton
Denton County FWSD 11-C	FWSD	Denton
Denton County FWSD 10	WCID	Denton
Denton County FWSD 11-A	FWSD	Denton
Denton County FWSD 8-A	WCID	Denton
Denton County FWSD 4-A	FWSD	Denton
Denton County FWSD 2-A	WCID	Denton
Denton County FWSD 6	FWSD	Denton
South Denton County WCID 1	WCID	Denton
Providence Village WCID of Denton County	FWSD	Denton
Denton County MUD 5	MUD	Denton
Oak Point WCID 3	WCID	Denton
Oak Point WCID 4	WCID	Denton
North Fort Worth WCID 1	WCID	Denton
Oak Point WCID 1	WCID	Denton
Denton County Development District 4	OTH	Denton
Denton County FWSD 1-H	FWSD	Denton
Denton County FWSD 1-F	FWSD	Denton
Ellis County MUD 1	MUD	Ellis
Ellis County LID 3	LID	Ellis
Ellis County FWSD 2	FWSD	Ellis
Ellis County LID 4	LID	Ellis
Ellis County FWSD 3	FWSD	Ellis
Ellis County WCID 1	WCID	Ellis
Mountain Peak SUD	SUD	Ellis
Buena Vista-Bethel SUD	SUD	Ellis
Denton County FWSD 3	WCID	Ellis
Ellis County Drainage District 1	DD	Ellis
Erath County Development District 1	OTH	Erath
Acton MUD	MUD	Hood



**Appendix D. Water Districts in the NCTCOG Region by County**

Source: TCEQ, 2017

Water Distrcit Name	Type	County
Hood County Grandbury MUD 1	MUD	Hood
Lake Granbury Water Improvement District	MUD	Hood
Denton County FWSD 2-B	WCID	Hood
North Hunt SUD	SUD	Hunt
Sunrise MUD of Hunt County	MUD	Hunt
Union Valley Ranch MUD of Hunt County	MUD	Hunt
Verandah MUD	MUD	Hunt
Commerce Water District	SWCD	Hunt
Combined Consumers SUD	SUD	Hunt
Caddo Basin SUD	SUD	Hunt
Johnson County SUD	SUD	Johnson
Johnson County FWSD 2	FWSD	Johnson
Bethany SUD	SUD	Johnson
Kaufman County FWSD 1A	FWSD	Kaufman
Twin Lakes MUD 1 of Kaufman County	MUD	Kaufman
Kaufman County MUD 3	MUD	Kaufman
Triple Creek Municipal Management District	MMD	Kaufman
Fairfields MUD	MUD	Kaufman
Moore Farm WCID 1	WCID	Kaufman
Kaufman County FWSD 2	FWSD	Kaufman
Kaufman County MUD 5	MUD	Kaufman
Kaufman County MUD 6	MUD	Kaufman
Las Lomas MUD 3	MUD	Kaufman
Kaufman County FWSD 1D	FWSD	Kaufman
Polo Ridge FWSD	FWSD	Kaufman
Kaufman County Parks Improvement District	OTH	Kaufman
Kaufman County LID 1	LID	Kaufman
Kaufman County FWSD 4A	FWSD	Kaufman
Las Lomas MUD 4 of Kaufman County	MUD	Kaufman
Kaufman County FWSD 5	FWSD	Kaufman
Kaufman County FWSD 6	FWSD	Kaufman
Kaufman County FWSD 1C	FWSD	Kaufman
Kaufman County FWSD 1B	FWSD	Kaufman
Kaufman County WCID 1	WCID	Kaufman
Kaufman County MUD 14	MUD	Kaufman
Kaufman County LID 4	LID	Kaufman
Kaufman County FWSD 4B	FWSD	Kaufman
Las Lomas MUD 1	MUD	Kaufman
Las Lomas MUD 2	MUD	Kaufman
Kaufman County MUD 4	MUD	Kaufman
Kaufman County MUD 2	MUD	Kaufman
Kaufman County MUD 7	MUD	Kaufman
Kaufman County MUD 9	MUD	Kaufman
Kaufman County MUD 10	MUD	Kaufman
Kaufman County MUD 11	MUD	Kaufman
Kaufman County MUD 12	MUD	Kaufman
Navarro County LID 11	LID	Navarro
Navarro County LID 10	LID	Navarro

**Appendix D. Water Districts in the NCTCOG Region by County**

Source: TCEQ, 2017

Water Distrcit Name	Type	County
Palo Pinto County WCID 1	WCID	Palo Pinto
Sportsmans World MUD	MUD	Palo Pinto
Palo Pinto County Municipal Water District 1	OTH	Palo Pinto
Maverick Improvement District of Palo Pinto County	MUD	Palo Pinto
Rockwall County Consolidated MUD 1	MUD	Rockwall
Rockwall County MUD 7	MUD	Rockwall
Rockwall County MUD 6	MUD	Rockwall
Rockwall County MUD 8	MUD	Rockwall
Rockwall County MUD 9	MUD	Rockwall
Rockwall County Consolidated MUD 2	MUD	Rockwall
Rockwall County WCID 2	WCID	Rockwall
Rockwall County WCID 1	WCID	Rockwall
Parker Creek MUD	MUD	Rockwall
Somervell County Water District	OTH	Somervell
Tarrant Regional Water District	RA	Tarrant
Circle T MUD 2	MUD	Tarrant
Viridian Municipal Management District	MMD	Tarrant
Benbrook Water Authority	OTH	Tarrant
Circle T MUD 1	MUD	Tarrant
Live Oak Creek MUD 1 of Tarrant County	MUD	Tarrant
Great Southwest Improvement District	OTH	Tarrant
Arlington Entertainment Area Management District	MMD	Tarrant
Tarrant County FWSD 1	FWSD	Tarrant
Circle T MUD 3	MUD	Tarrant
Denton County FWSD 2-C	WCID	Tarrant
Rolling V Ranch WCID 1 of Wise County	WCID	Wise
Wise County WSD	WCID	Wise

**Appendix E. Public Comments and NCTCOG Response**

**Appendix E. Public Comments and NCTCOG Response**

Received	Entity	Comment	NCTCOG Response
6/5/2017	Upper Trinity Regional Water District	<p>Upper Trinity Regional Water District appreciates the opportunity to review the “Draft” 2017 Water Quality Management Plan and offer comments. Specifically, the District requests that these items included in the Draft WQMP be corrected</p> <ol style="list-style-type: none"> <li>1. Appendix B is missing the Doe Branch Regional Water Reclamation Plant</li> <li>2. Appendix C is missing the Doe Branch Regional Water Reclamation Plant</li> <li>3. Appendix C Lakeview Regional Water Reclamation Plant design flow should be “5.5 mgd”</li> <li>4. Appendix C Riverbend Regional Water Reclamation Plant               <ol style="list-style-type: none"> <li>a. facility design flow should be “2 mgd”</li> <li>b. current permit issue date should be “4/21/2017”</li> <li>c. current permit status should be “Effective”</li> <li>d. annual average should be “1.88 mgd”</li> <li>e. annual average of daily max should be “2.95 mgd”</li> <li>f. annual average 2 hour peak should be “3,320 gal/min” average of annual average should be “1.84 mgd”</li> </ol> </li> </ol>	<p>Doe Branch Regional Water Reclamation Plant is already captured in Appendix B under the EPA I.D. No. TX125172. Date Received: 5/20/2016, found on pg. 14 of the Appendix B.</p> <p>NCTCOG has updated the Appendix C to include Doe Branch Regional Water Reclamation Plant.</p> <p>NCTCOG has updated the discharge monitoring report data in Appendix C to reflect the new information for Lakeview Regional Water Reclamation Plant and Riverbend Regional Water Reclamation Plant provided by the entity.</p>

Received	Entity	Comment	NCTCOG Response
6/6/2017	City of Cleburne	<ol style="list-style-type: none"> <li>1. Page 5 - The list of acronyms has many missing definitions – for example most of the acronyms in Appendix D are not defined.</li> <li>2. Fig 5. Page 13 – the map legend does not provide the color coding that identifies the permitted discharge receiving water body.</li> <li>3. Fig 5 page 13- the map does not appear to include the City of Cleburne TPDES permitted discharge.</li> <li>4. Fig 9 and text above Page 20 – the text is unclear as to whether the figure only shows ‘wastewater joint system providers’ or is showing all waste water service areas. The City of Cleburne wastewater service area is not shown. (The Cleburne WWTP is shown on Figure 10.)</li> <li>5. Figure 12 Page 24 shows ‘major water suppliers’ in a region water services areas map, but does include independent municipal utilities like Cleburne. (Cleburne’s service area would exceed the size of the Park Cities MUD.</li> <li>6. Page 24 - The text references Appendix D for a complete list of all water districts, but Cleburne is not listed in that appendix. Where would</li> </ol>	<p>NCTCOG has updated the list of acronyms to include the acronyms found in the appendices.</p> <p>This comment was not addressed in the final document. NCTCOG will coordinate and revise as appropriate during the next update of the Water Quality Management Plan document.</p> <p>This comment was not addressed in the final document. NCTCOG will coordinate and revise as appropriate during the next update of the Water Quality Management Plan document.</p> <p>This comment was not addressed in the final document. NCTCOG will coordinate and revise as appropriate during the next update of the Water Quality Management Plan document. Fifth comment not addressed.</p> <p>This comment was not addressed in the final document. NCTCOG will coordinate and revise as appropriate during the next update of the Water Quality Management Plan document.</p> <p>This comment was not addressed in the final document. NCTCOG will coordinate and revise as appropriate</p>

		<p>municipal utilities that are not part of a regional system be found or described?</p> <p>7. Page 28 – The text says Cleburne received 19,000,000 from SWIFT funds. We did not receive SWIFT funds. The second paragraph says “The extension of the East Loop pipeline will support...”. That should be the “West Loop Extension”. (The text describing the current East Loop use is correct.)</p> <p>8. Appendix C – date on flow for City of Cleburne WWTP is incorrect. The Facility Design flow is 7.5 MGD, the Actual Average Facility Flow is approximately 4.5 MGD.</p> <p>9. Appendix D – while this may include all Water districts, it does not appear to include municipal water utilities, water supply corporations or other water providers. This Appendix may be correct, but without showing a complete listing of other sources (i.e. with additional maps or appendix lists) the overall picture of water resources is poorly represented.</p>	<p>during the next update of the Water Quality Management Plan document.</p> <p>Verbiage changed from “In 2015, the City of Cleburne received 19,000,000 from the State Water Implementation Fund for Texas (SWIFT) fund...” to “The City of Cleburne is developing a new project that will tie into the current pipeline called the West Loop Reuse Project”. Verbiage changed from “East Loop Pipeline” to “West Loop Extension”.</p> <p>This comment was not addressed in the final document. NCTCOG will coordinate and revise as appropriate during the next update of the Water Quality Management Plan document.</p> <p>NCTCOG intended Appendix D to specify the water districts by county within the NCTCOG Region.</p>
--	--	--	--