

Texas TMDL Program

Office of Water

Texas Commission on Environmental Quality



June 2017





Strategy for Improving Water Quality

A Two Element Approach

TMDL: Total Maximum Daily Load

- How much is too much?



Implementation Plan

- Developed by the stakeholders



Public Participation

- All phases involve stakeholders
 - Special work groups
 - Clean Rivers Program
 - Government agencies
 - Interest groups
- Participate in development



TMDL Mandate

- Texas is required under Section 303(d) of the federal Clean Water Act to list impaired waters and take action to restore them.
- Impaired waters are identified every two years on the *Texas Integrated Report of Surface Water Quality*.
- A surface water body is considered impaired if it does not meet the criteria for support of one or more of its beneficial uses, as defined in the *Texas Surface Water Quality Standards (307.1 – 307.10 TAC)*

TMDL – Total Maximum Daily Load

- Determines the maximum amount (load) of a pollutant that a water body can receive and still maintain uses
- Allocates this load to broad categories of sources in the watershed.
- Adopted by the TCEQ
- Approved by the EPA



TMDL Allocations

$$\text{TMDL} = \text{WLA}_{(\text{WWTF})} + \text{WLA}_{(\text{PSW})} + \text{LA} + \text{MOS}$$

- $\text{WLA}_{(\text{WWTF})}$ – wasteload allocation for WWTF discharges
- $\text{WLA}_{(\text{PSW})}$ – wasteload allocation for all types of permitted stormwater discharges
- LA – load allocation
- MOS – margin of safety
- Units per day

The TMDL Allocation & Report

- TCEQ or contractor leads development
- Uses the simplest models and analysis available
- Reasonable Assurance — the I-Plan







I-Plan – the second element

Implementation Plan

- A detailed description of the regulatory and voluntary measures necessary to achieve the pollutant reductions identified in a TMDL
- Includes a plan for sustaining implementation over time
- Approved by the TCEQ



The I-Plan

- Local organization — such as a river authority or COG — facilitates development (under contract with TCEQ) 
- Develops a balanced Coordination Committee
- Identifies and organizes Work Groups
- Develops a Plan to improve water quality
-  Promotes Plan to gain cooperation of people in the watershed

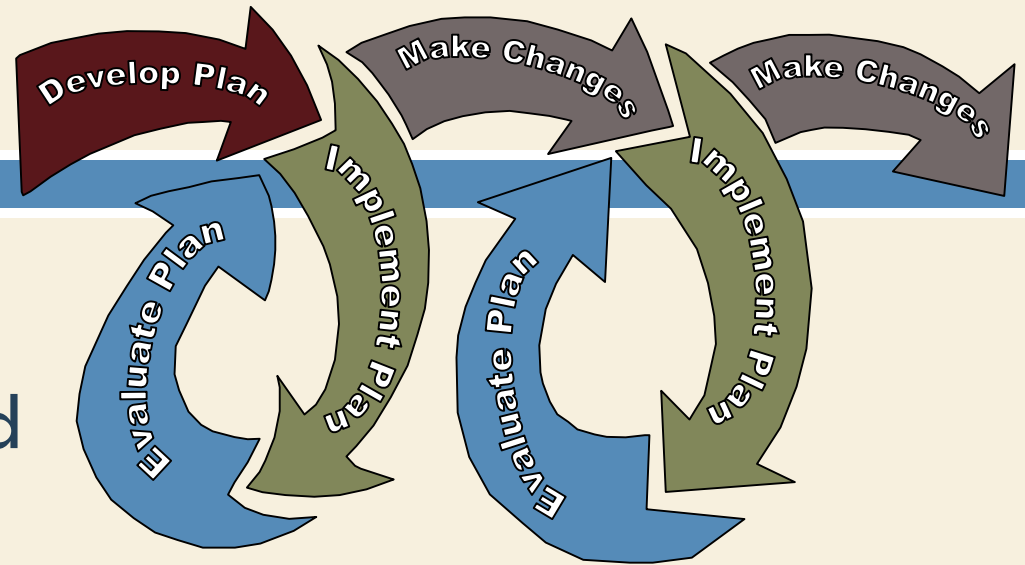
I-Plans Are...

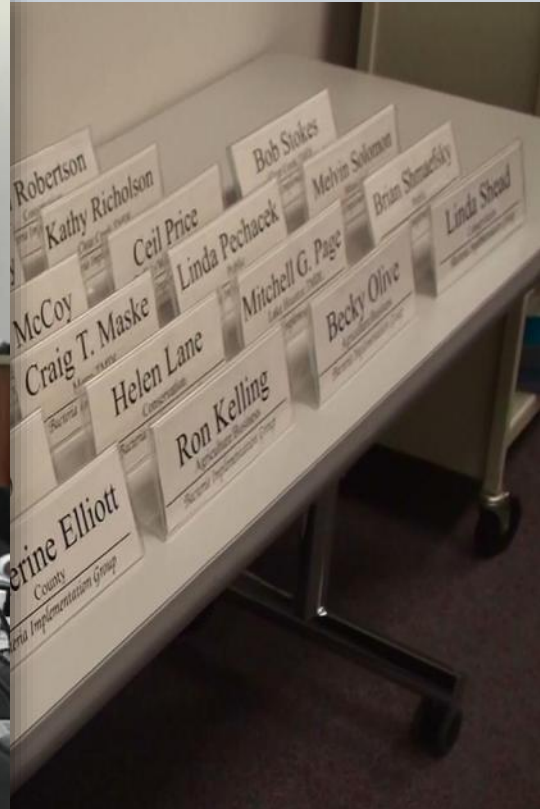
- Collaborative, involving a wide variety of stakeholders
 - Citizens and interest groups
 - State, local, and federal agencies
 - Regulated organizations
- Implemented over many years
 - Reviewed periodically
 - Monitored to assess their effectiveness



I-Plans...

- Adaptive
- Revised as needed
- Approved by the Commission
- EPA has no review authority





Efficiency, Collaboration, Results

TMDLs and Stakeholder Participation

Sycamore Creek Bacteria TMDL

- TCEQ is currently developing a draft TMDL for bacteria in Sycamore Creek (0806E) in Fort Worth

- Pubic meeting:

Tuesday, August 15, 2017

6:00 P.M.

Ella Mae Shamblee Library

1062 Evans Ave.

Fort Worth, TX 76104

For More Information on TMDLs



TCEQ Website

www.tceq.texas.gov/waterquality/tmdl

Water Quality Planning Division

Dania Grundmann, Project Manger

512-239-3449

Dania.grundmann@tceq.texas.gov

TOTAL MAXIMUM DAILY LOAD PROGRAM

Communities Working Together



**Taking Care of Our
Streams, Lakes, and Bays**

