

# TXDOT AVIATION

NCTCOG ATAC Brief – Feb 6, 2020



# TxDOT Aviation – Brief Update

- Staffing
  - Division Director: Dan Harmon
    - December 2<sup>nd</sup> 2019
    - Interim Director for TxDOT Maritime
    - Interim Director for TxDOT Flight Services
  - Planning and Programming Section Director
    - Vacant as of December 5<sup>th</sup>
    - Interviews in progress
    - March timeline for filled position
  - TxDOT Aviation Grants Section
    - Three new hires started in December
- Horizon outlook

- Funding

- AIP / NPE

- FY19 AIP \$18,120,779
    - FY19 NPE \$27,394,000
    - FY20 AIP \$18,224,038
    - FY20 NPE \$27,094,000
    - Anticipate FY20 funds April, 2020

# TxDOT Aviation – Brief Update

- Funding
  - Discretionary / Supplemental Funding
    - TxDOT received \$10.4M in FY19 Discretionary Funding
      - Includes the FY19 Supplemental Apportionment
      - Victoria, Georgetown, Bay City and Conroe received FY19 Discretionary funding
    - FY19 Supplemental Apportionment: 100% Federal Funding
      - Monahans \$2.678M
      - Seymour \$2.200M
    - FY20 Supplemental : Split 90/10
      - Mineral Wells \$1.033M (based on bids)
      - Post \$1.225M
      - Sugar Land \$2.000M
      - Giddings \$1.300M

## ■ Funding

### – RAMP Grants

- 217 Grants in FY2019
- \$7.88M total in TxDOT Grants
- Average grant: \$35,725

## **–Conferences:**

- **38th Annual Texas Aviation Conference**

- April 7-9, 2020

- Moody Gardens Hotel, Galveston, TX

- **2020 FAA Airports Conference**

- June 22-24, 2020

- Hurst Conference Center, Hurst, TX



# Update on Military and Community Planning In North Texas

Air Transportation Technical Advisory Committee

February 6, 2020

Dan Kessler, North Central Texas Council of Governments

# Defense Spending in North Texas

**\$18.89 Billion**

DOD Contract Spending in  
North Texas

(Collin, Dallas, Tarrant, Hunt  
Counties)

**59% of State  
Total**

DOD Contract Spending in  
North Texas

**4 of Top 10  
Counties**

DOD Contract Spending in  
North Texas

**Tarrant  
County**

Ranked First in DOD Contract  
Spending in North Texas- \$9.2  
Billion – 39% of Total

NAS Fort Worth JRB Contributes **\$3.9 Billion** to the  
North Texas economy

# Carswell Air Force Base



Opened in 1942  
as Fort Worth  
Army Field

Became a  
Strategic Air  
Command (SAC  
Base) in 1946

Home to the  
B52 Flying  
Stratofortress  
in 1957

Closed Through  
Base Realignment  
and Closure  
(BRAC) in 1993



# Naval Air Station Joint Reserve Base Fort Worth (NASJRB)



Recommissioned in 1994 with Closure of the Dallas Naval Air Station



Part of the U.S. Navy Installations Command Southeast Region

Home to over 40 Department of Defense Commands



Over 10,000 Reservists Train and Drill on Weekends

3,000 Full-Time Military Personnel

Troop Deployments Occur Worldwide from NASJRB



Aircraft Operate in the Brownwood/Brady MOA

Shared Runway with Lockheed Martin



# Lockheed Martin- Air Force Plant 4



Credit: Lockheed Martin

Government  
Owned  
Contractor  
Operated

Manufactured  
over 3,600  
F16 Jet  
Fighters

18,300 Current  
Employees

Manufacturing the  
F35 Joint Strike  
Fighter

# NCTCOG Military Community Planning in North Texas

2006



NASJRB  
Joint Land  
Use Study  
(DOD)

2012



Regional  
Coordination  
Committee  
Transportation  
Assessment  
(FHWA/FTA  
TPF)

2013



Planning for  
Livable  
Military  
Communities  
(HUD)

2017



Regional  
Joint Land  
Use Study  
(DOD)

2020



Regional Joint  
Land Use  
Implementation  
Grant (DOD)

# What is JLUS?

A JLUS is a community- driven planning partnership among military and adjacent communities. A strategy is developed, with specific recommendations, to promote and guide community development that is compatible with continued military operations.

Department of Defense – Office of Economic Adjustment

# Military Planning Terminology

**ACUZ**

Air Installation Compatible Use Zone

**CZ**

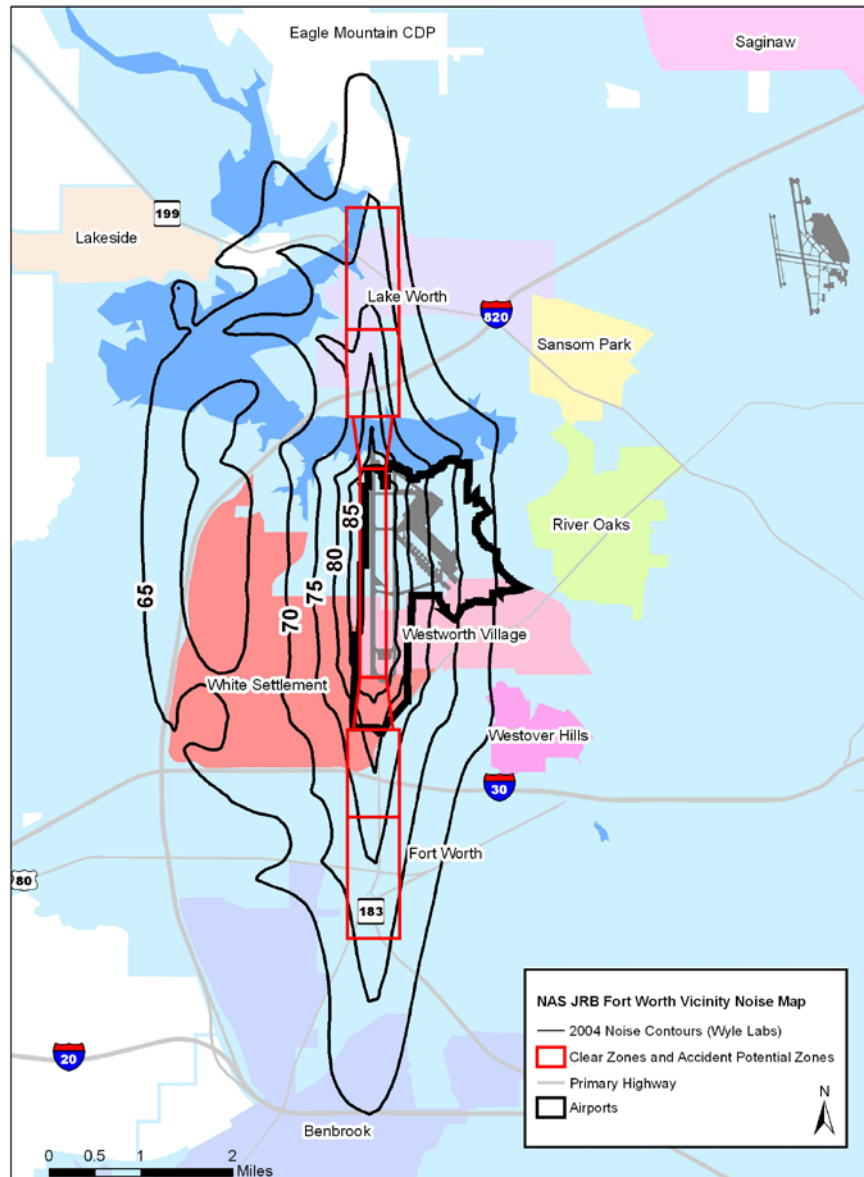
Crash Zone

**APZ**

Accident Protection Zone

**65 DCB**

Maximum Sound Level Determined Considered to  
be Hearing Safe



# 2008 Joint Land Use Study (OEA-DOD)

*Defending the Sound of Freedom*

First Joint  
Land Use  
Study Done  
in North  
Texas

18 Ongoing  
Strategies  
Focusing on  
Military Base  
and  
Community  
Compatibility

Formation of  
the Regional  
Coordinating  
Committee  
(RCC)

Web Based  
Project  
Tracking  
Development  
Tool

# 2008 JLUS Status of Implementation Actions

Form Regional Oversight Committee	Host Community Strategies	Planning Updates	Zoning Changes	Building Regulations
Height of Structures	Light Surrounding NAS Fort Worth, JRB	Review Public-Use Facilities	Storm Water Drainage Assessment	Real Estate Advisory Service
Real Estate Disclosure	Surface Transportation Access	Development Review	Public Purchase of Land	Other Encroachment Mitigation Efforts
	Updates to Noise and Safety Zones	Funding of Recommendations	<b>Dark Green = Completed</b> <b>Light Green = Efforts Started or Ongoing</b> <b>Grey = Not Started</b>	

# 2012 RCC/NASJRB Fort Worth Transportation Needs Assessment

Areawide  
Demographic  
Growth Trends

Detailed Traffic  
Forecasts/Level  
of Service  
Analysis

Key  
Transportation  
Issues and  
Priority  
Corridors

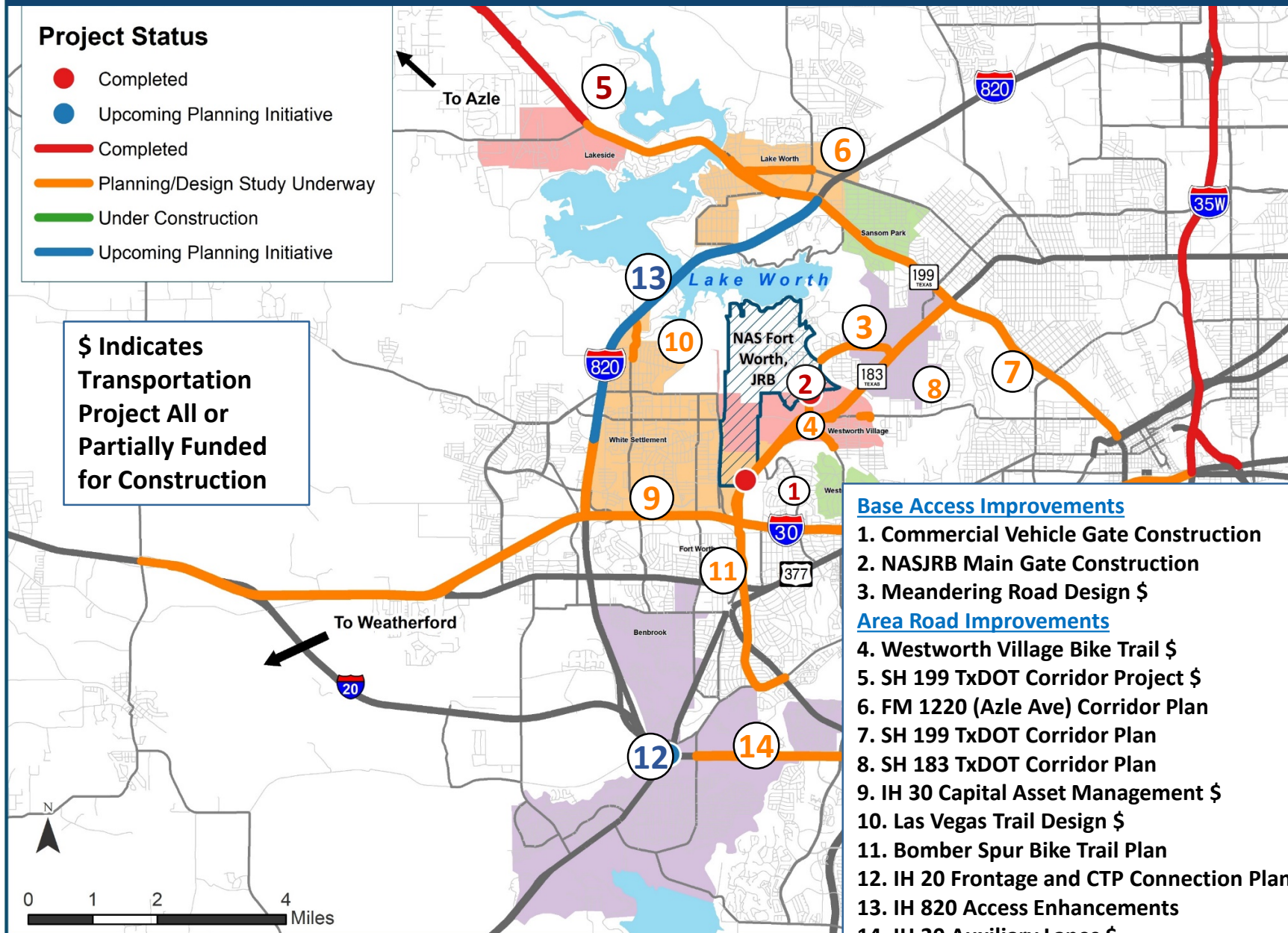
Foundation for  
Major Project  
Funding  
Decisions

# PLMC Transportation Implementation Update

## Project Status

- Completed
- Upcoming Planning Initiative
- Completed
- Planning/Design Study Underway
- Under Construction
- Upcoming Planning Initiative

**\$ Indicates Transportation Project All or Partially Funded for Construction**



## Base Access Improvements

1. Commercial Vehicle Gate Construction
2. NASJRB Main Gate Construction
3. Meandering Road Design \$

## Area Road Improvements

4. Westworth Village Bike Trail \$
5. SH 199 TxDOT Corridor Project \$
6. FM 1220 (Azle Ave) Corridor Plan
7. SH 199 TxDOT Corridor Plan
8. SH 183 TxDOT Corridor Plan
9. IH 30 Capital Asset Management \$
10. Las Vegas Trail Design \$
11. Bomber Spur Bike Trail Plan
12. IH 20 Frontage and CTP Connection Plan
13. IH 820 Access Enhancements
14. IH 20 Auxiliary Lanes \$

# 2013 Planning for Livable Military Communities (HUD)

*Moving from Compatibility to Sustainability*

Focus on Community Vision and Regional Priorities

Economic Development/Market Analysis

Detailed Housing Assessment

Land Use Assessment

System of Pedestrian and Bicycle Improvements

Individualized Guides for Updating Comprehensive Plans

Formation of the Western Tarrant Alliance

# 2017 Regional Joint Land Use Study (OEA-DOD)

## *Joining Forces*

Updated the 2008 NASJRB JLUS

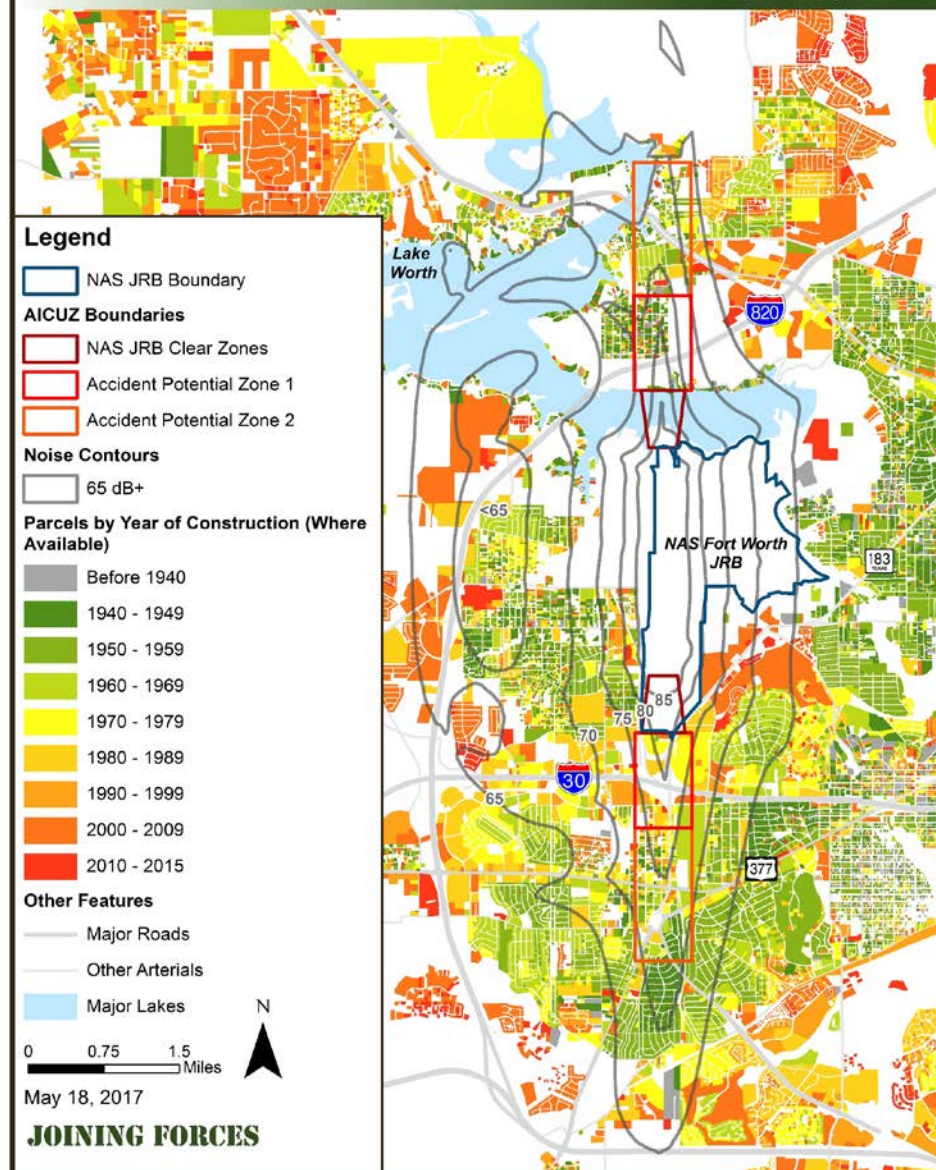
Detailed Analysis of Land Use  
Change 2005-2015

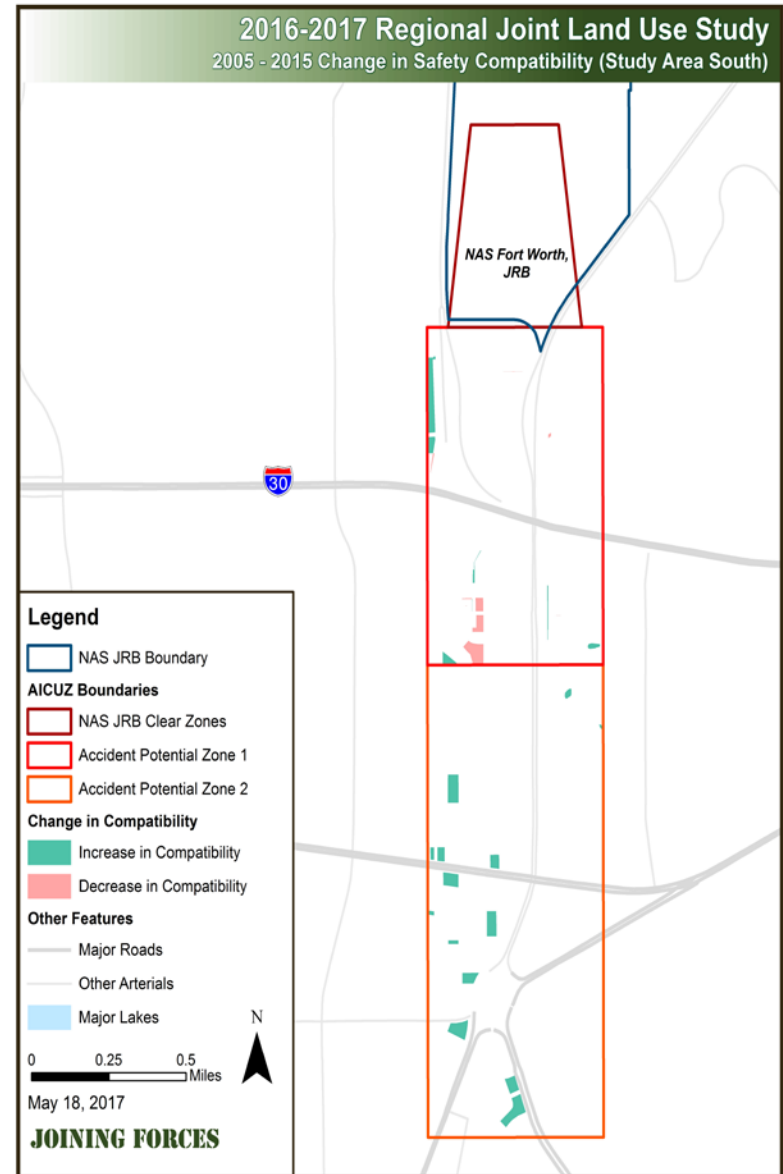
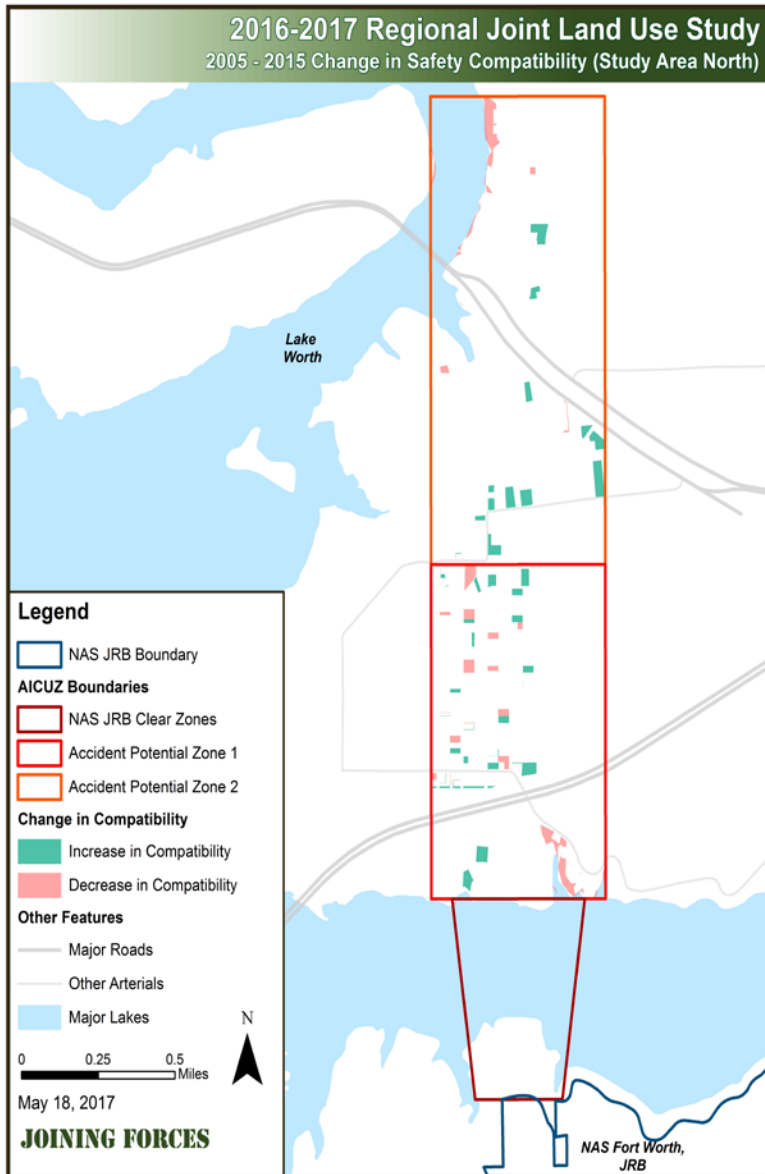
Regional JLUS including Multiple  
Military Installations

New Partnership with Texas  
Military Department

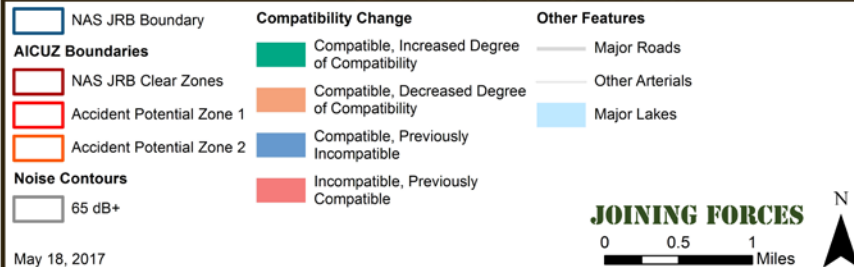
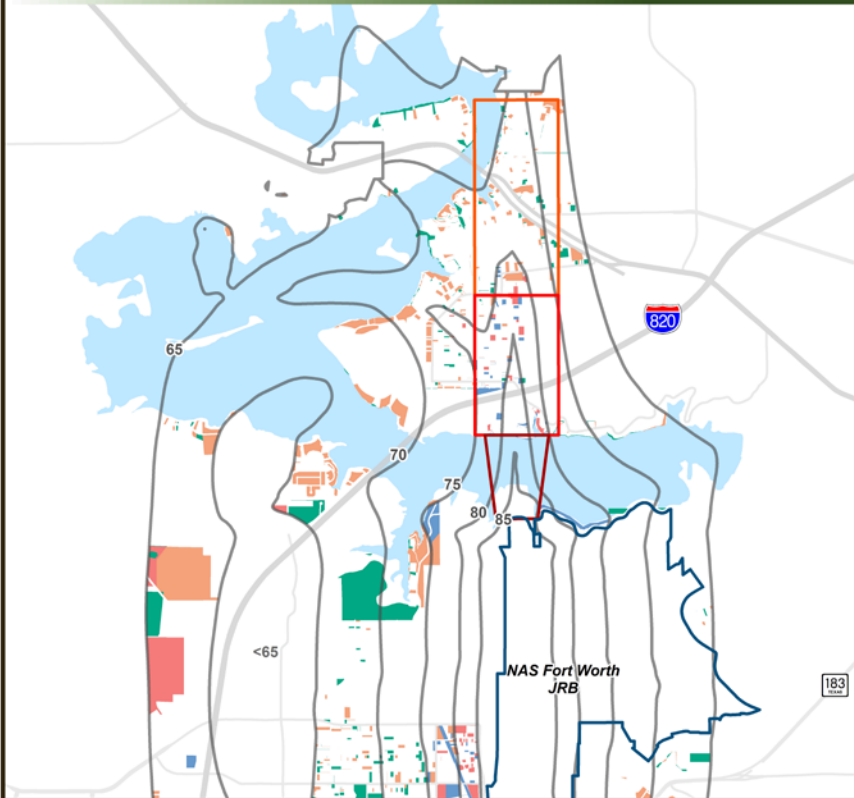
# 2016-2017 Regional Joint Land Use Study

Development by Decade

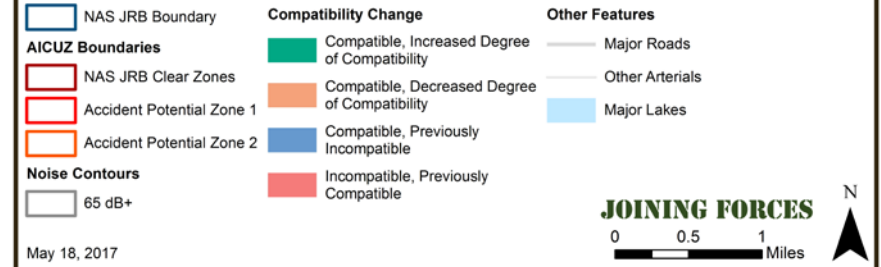
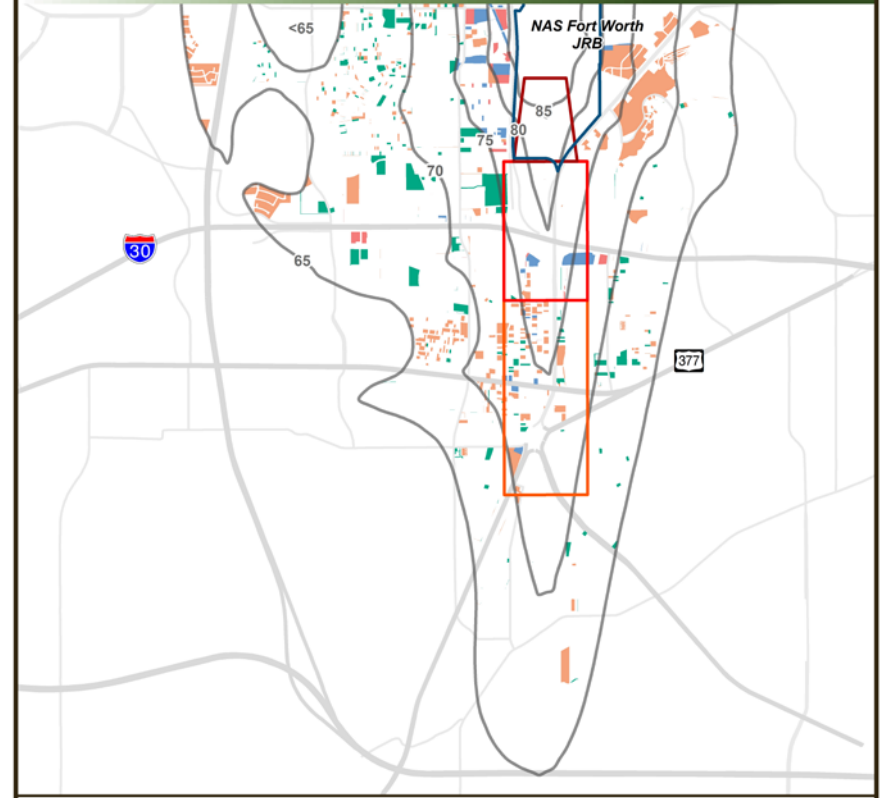




# 2016-2017 Regional Joint Land Use Study 2005-2015 Change in Noise Compatibility (Study Area North)



# 2016-2017 Regional Joint Land Use Study 2005-2015 Change in Noise Compatibility (Study Area South)



# Key 2017 JLUS Strategies

Approximately 150 actions identified with some overlapping strategies. Desire for more coordination and strong support for military missions.

Establishing more formal channels of communication and coordination processes for all installations and surrounding communities; develop a region-wide forum.

Building on the collaboration among NAS Fort Worth JRB and neighboring communities and refining existing compatibility tools.

Addressing aviation and security risks associated with unmanned aircraft systems (UAS or drones).

Addressing aviation and radar interference risks associated with incompatible utility-scale energy infrastructure siting.

Promoting regional and statewide compatibility solutions.

# 2020 JLUS Implementation Grant (OED-DOD/RTC)

Active parcel compatibility  
maintenance initiative

Regional Coordination Committee

Homeowners Relations

Land Use, Zoning, Building Codes

Military Operations Monitoring

Environmental Protection

UAS Education and Outreach

Regional Forum

Statewide JLUS Partnership

Continued Transportation  
Improvements

# 2020 JLUS Implementation Grant

Naval Air Station Joint Reserve Base Fort Worth

Dallas Army Aviation Support Facility

Fort Wolters – Mineral Wells

Camp Maxey – Paris

Texas Military (National Guard) Support Facilities

# Regional Work Tasks

- Create a region-wide forum for communication and advocacy of military missions, installations, and training assets across North Texas
- Participate in efforts to coordinate with other JLUS entities in Texas
- Develop focused transportation plans and track local bond proposals for appropriateness of needed transportation improvements
- Monitor and Coordinate work of the UAS Task Force and Work Groups

# NASJRB Fort Worth

## Key Work Tasks

- Protection of key military training areas from incompatible development, including wind energy projects and cumulative effects of noise complaints
- RCC Development Review Tool upgrades, including efforts to improve effectiveness for monitoring developments
- Several efforts on sound attenuation – building codes, documenting completed sound attenuation, connecting homeowners with weatherization/energy efficiency resources, exploring incentive program, certification program for homebuilders
- Maintain ongoing inventory of compatibility actions
- Several study items – dark sky provisions, need for perimeter security improvements, voluntary land acquisition in safety zones

**JOINING FORCES**

# Regional Work Tasks

- Understand energy developments, resources to monitor and comment on development
- Inventory strategic infrastructure and other physical investments to support increased installation capabilities in North Texas
- Monitor regional aviation air space utilization
- Track future air emissions as part of air quality compliance

# NASJRB Fort Worth

## Key Work Tasks

- Continued support of the Regional Coordination Committee
- Active monitoring of changing operations/impacts at base, including leadership changes and assisting with transition of new base commanders with RCC Process
- Monitor outreach to Military Operating Areas/Military Training Routes
- Participate in environmental efforts, such as the Lake Worth Green Print plan
- Actively promote public transportation and travel demand management strategies (carpooling, etc.) to improve access to the base and reduce traffic congestion

# NASJRB Fort Worth

## Key Work Tasks

- Monitor additional residential growth in the noise contours, but also near other military installations
- Develop and distribute a welcome packet for new residents
- Support implementation of state law on real estate disclosure
- Monitor local government land use plans and facilitate development of consistent Navy compatibility guidelines
- Support Deployment of the F35- Lightning at NASJRB Fort Worth Air Force Reserve 301st Fighter Wing

# Closing Thoughts

Role of NCTCOG/MPO  
Military Base Planning

Importance of  
Communication  
Among Partners

Emphasis on  
Planning and  
Funding Partnerships

Rewards of Working  
with the Military



# Mobility Innovation Zone

Christian Childs, Hillwood

January 28, 2020





# Today's Discussion

- Forces Driving Mobility Innovation
- AllianceTexas: A Unique Platform
- Creating a Mobility Innovation Zone

# Why mobility innovation?

- Rapid Growth and Change across the Transportation Industry
- Need for Partnership and Integration



**\$3.6 Billion+**  
**Truck Technology**

Investment in Trucking Technology Reached a New Peak in 2018

**\$14.1 Billion+**  
**Drone Technology**

Market Size in 2020



**100 Billion+**  
**Parcel Shipments**

Expected Shipments in 2020

# Challenges to Commercialization

## Vision:

Finding **ONE** test bed location to represent a variety of real-world situations

## Reality:

Testing in multiple environments is costly and impractical



## AIRSPACE

### Aerial testing requires:

1. A variety of airspace types
2. Regulatory relationships
3. Population density variations



## AUTONOMOUS VEHICLE

### Testing autonomous vehicles:

1. Private streets and public roads and highways
2. Partnerships with potential customers
3. Research facilities and university labs nearby



## POPULATION DENSITY

### Rural areas and urban areas are typically mutually exclusive in their locations:

1. Comprehensive UAV and UAS testing
2. Unmanned aerial and ground technology
3. Consumer adoption testing



## PARTNERSHIPS

### Interest and input from various industries is required:

1. Regulatory access and participation
2. Access to various industries for use and adoption testing
3. Ultimately, commercialization will require access from creators regulators, users, and customers



# AIR TRANSPORTATION ADVISORY COMMITTEE

FEBRUARY 6, 2020



Regional Airport Funding Update

# Texas

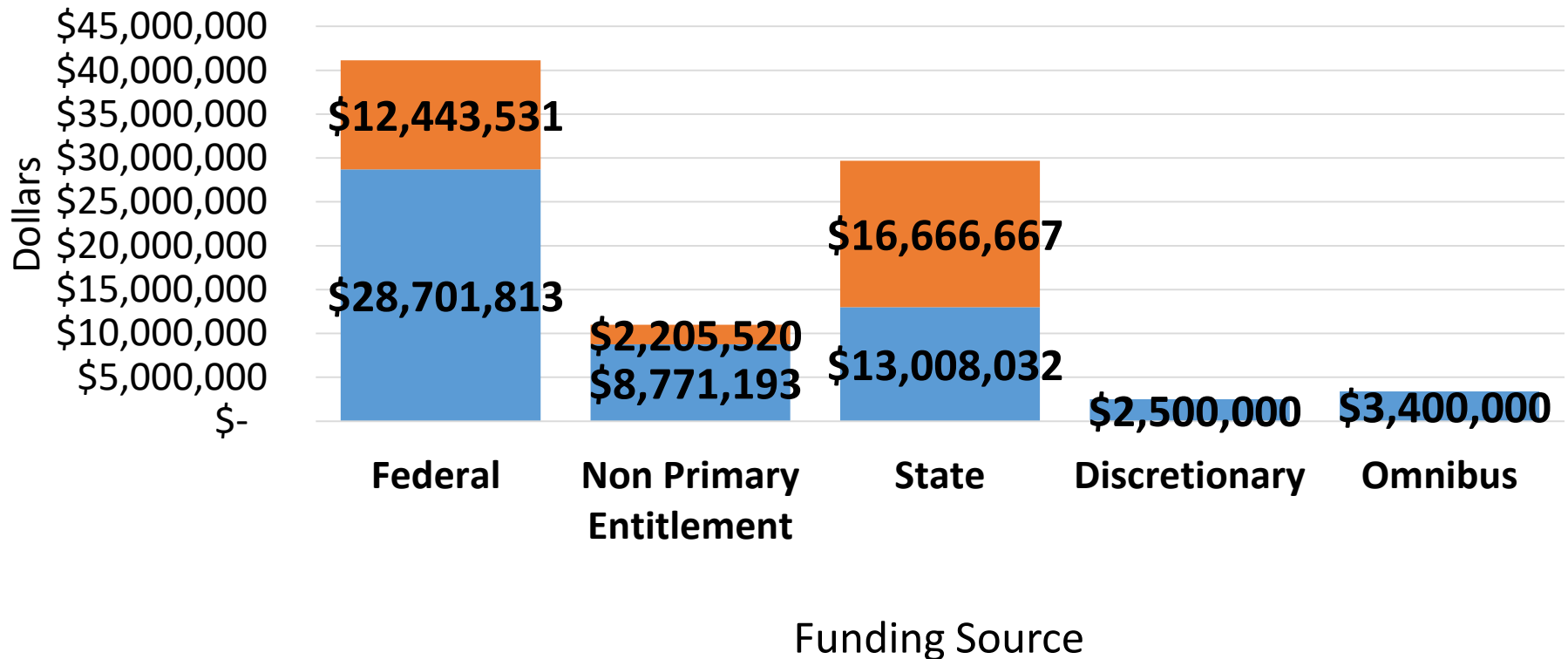
## Grants by Funding Source

### 2019

Goal = \$75,000,000

Total = \$87,696,756

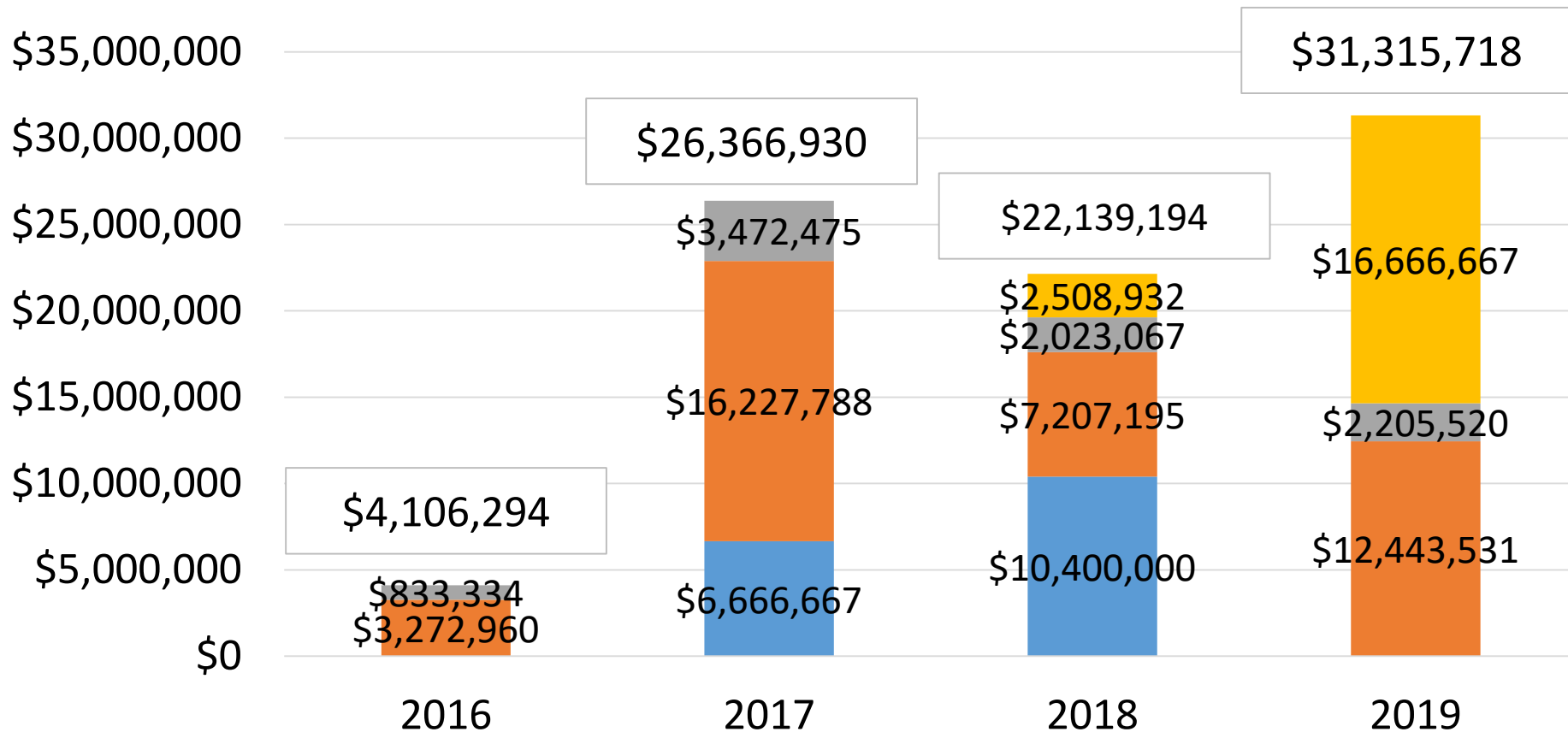
NCTCOG Region  
Rest of the State



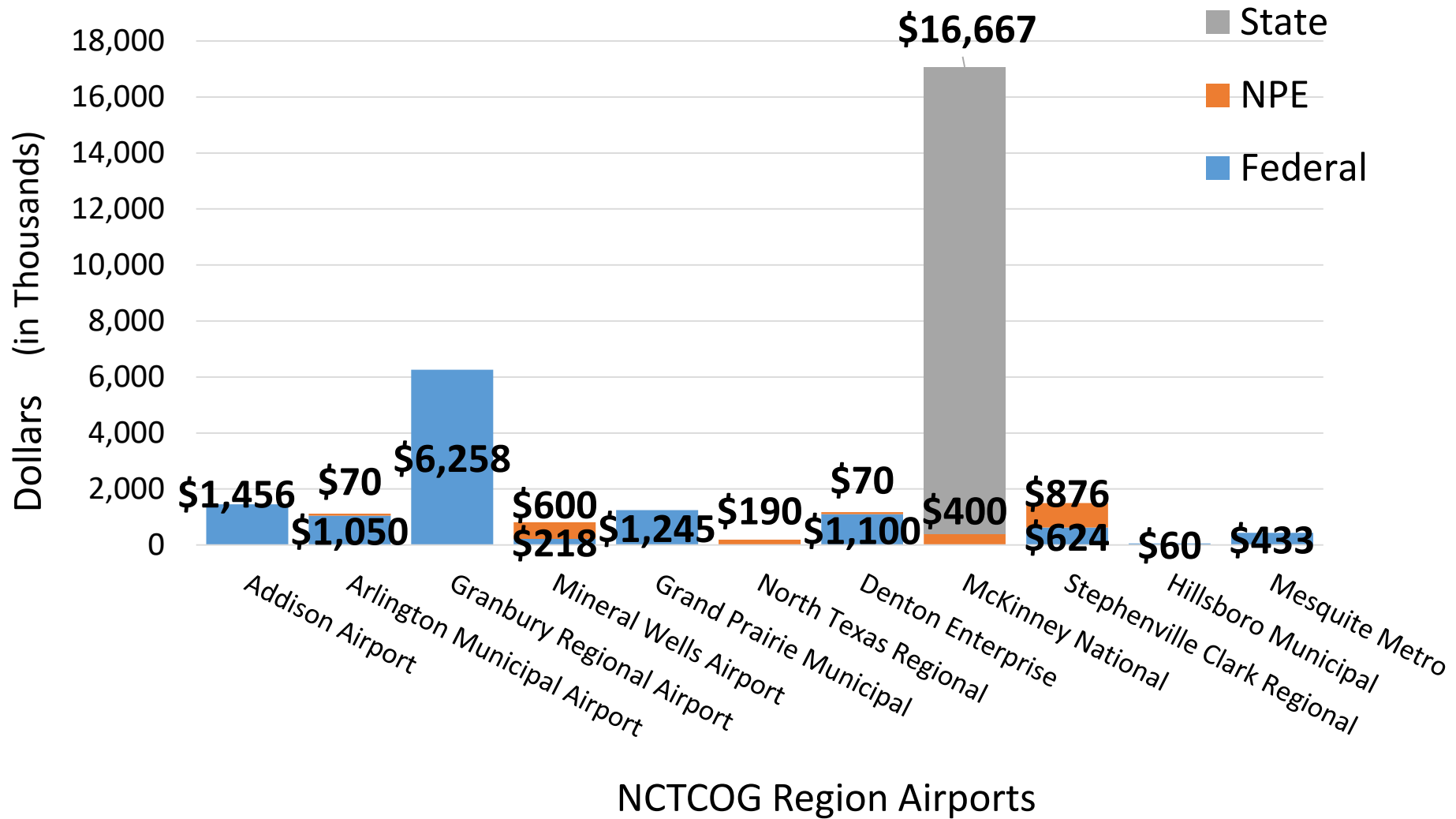
# DFW Region

## Annual Funding Comparison

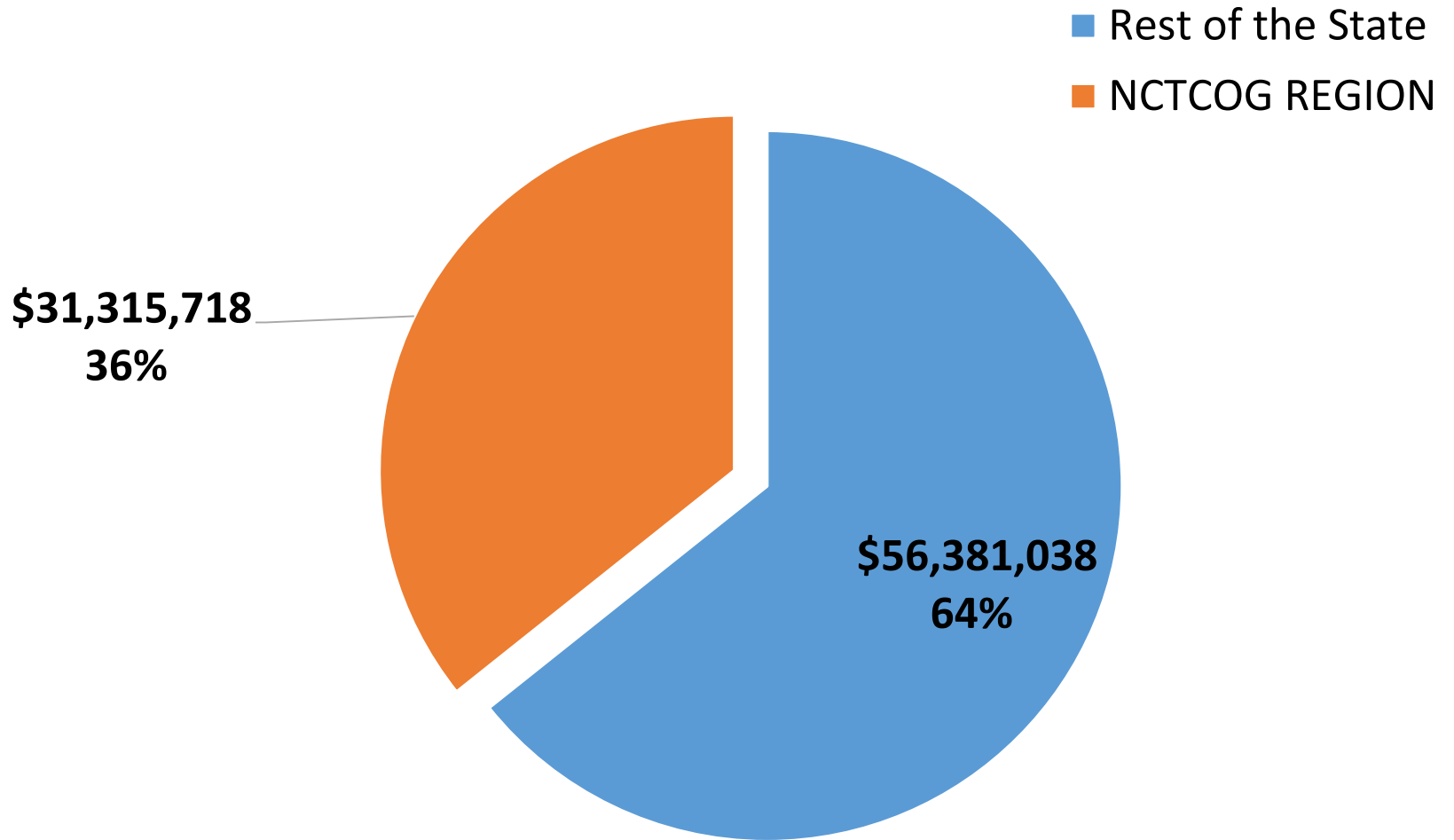
■ - Discretionary ■ - Federal ■ - NPE ■ - State



# NCTCOG Regional Airport Grant Amount 2019



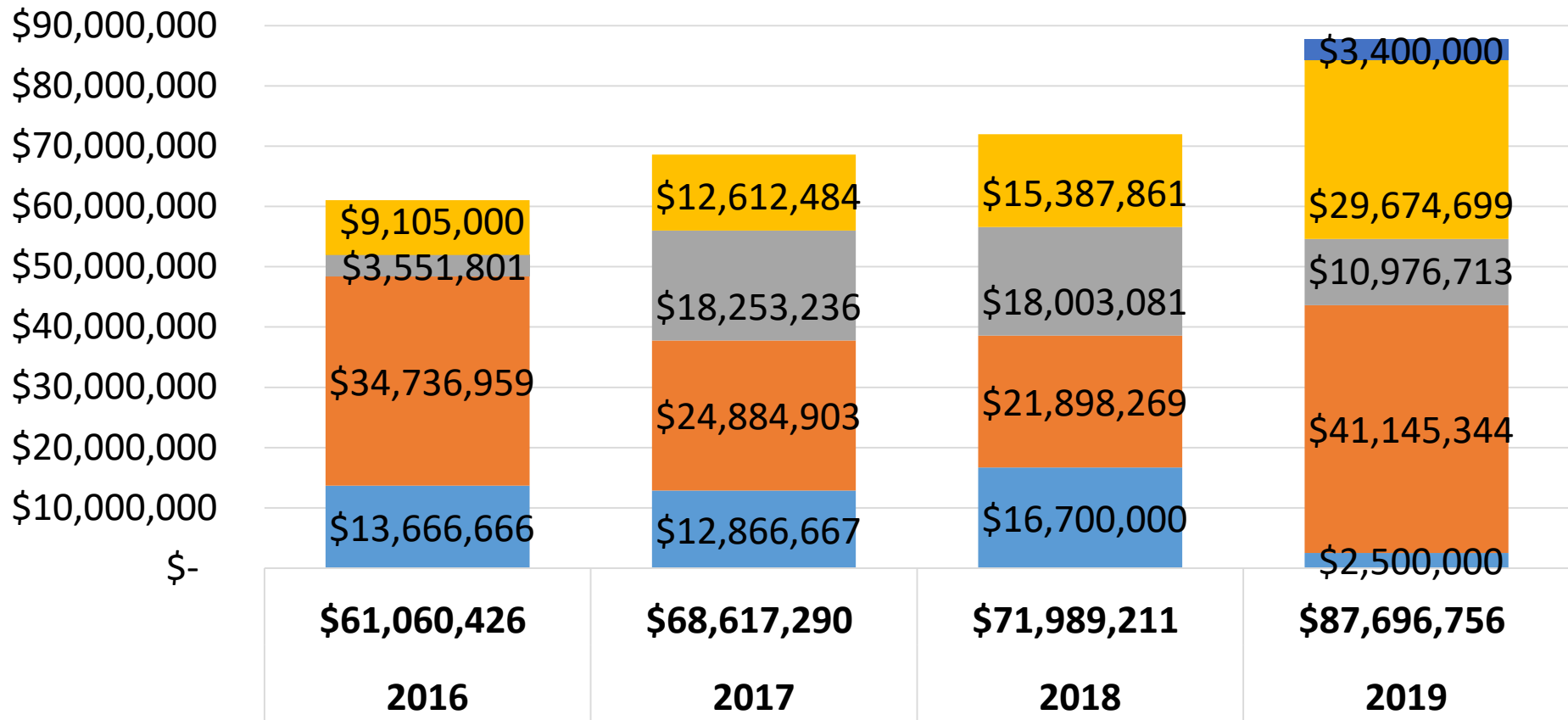
# NCTCOG Region vs. Non-Regional Funding 2019



# Texas

## Annual Funding Comparison

Discretionary Federal NPE State Omnibus



# Questions?

Ernest Huffman  
Principal Transportation  
Planner

[EHuffman@nctcog.org](mailto:EHuffman@nctcog.org)

(817) 704-5612



# A Pioneering Vision





AllianceTexas is a 26,000-acre  
masterplan community  
developed by Hillwood

/\$9.8 billion invested

\$76 billion economic impact

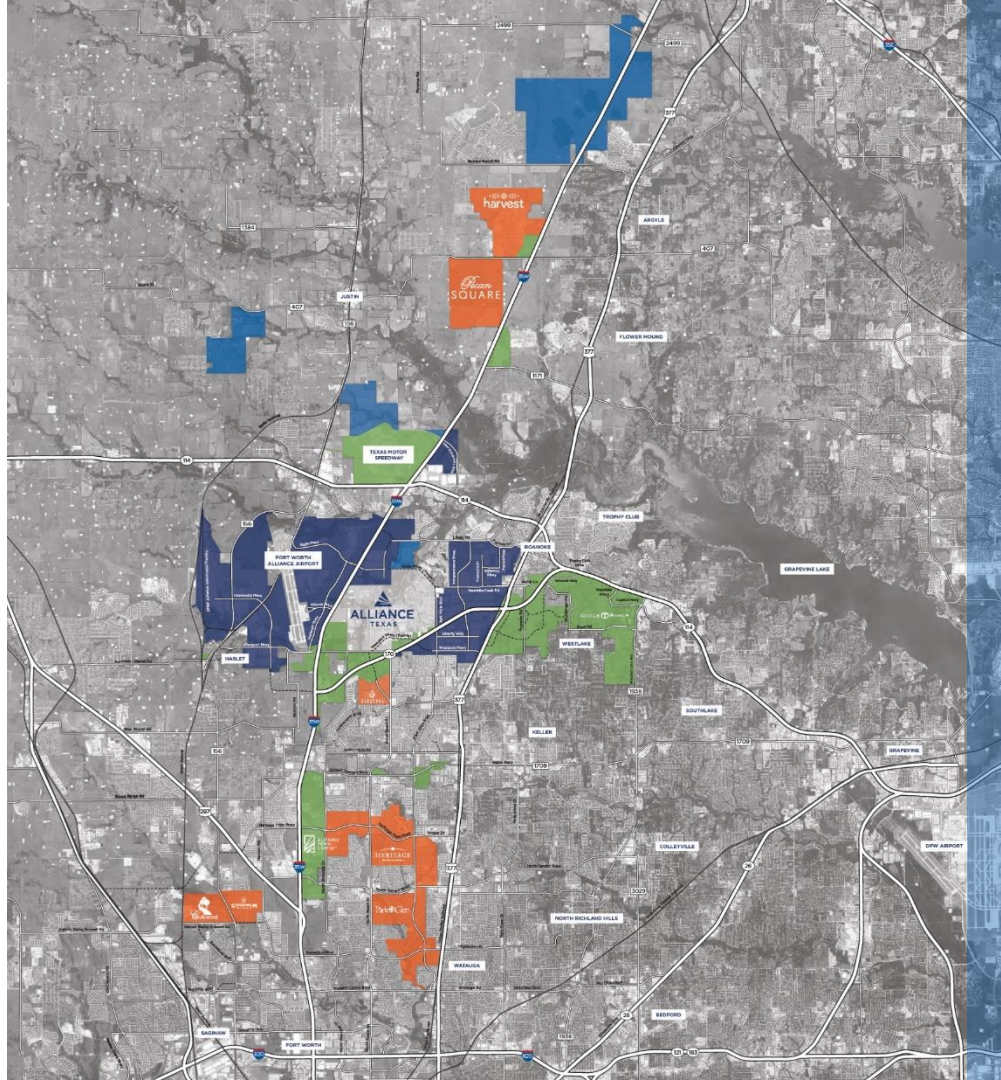
45 million SF developed

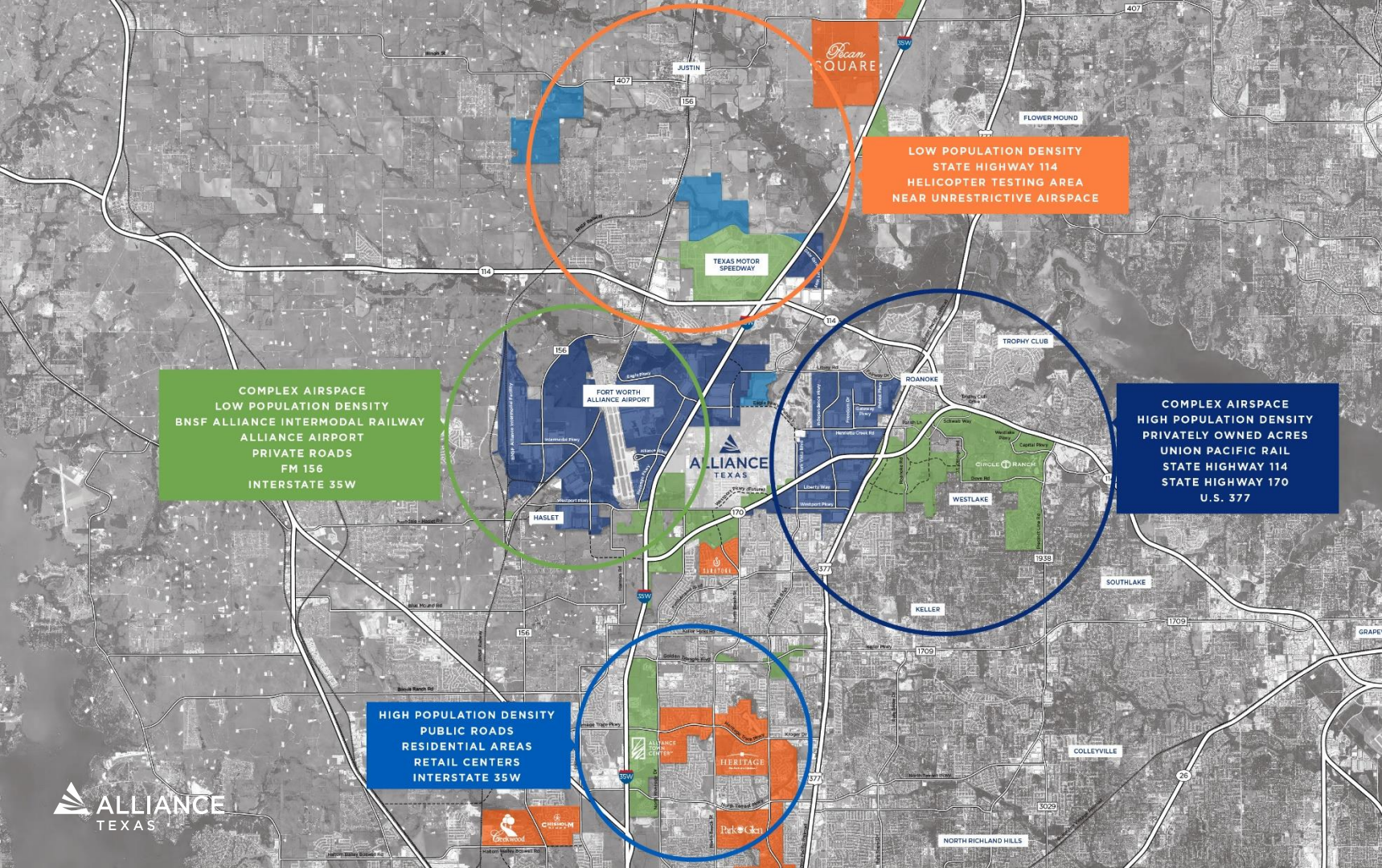
507 corporate residents

70 top ranked companies

61,602 total employees

Population of 2 million within  
20 miles of the center  
of AllianceTexas





# Alliance Center

- Two 11,000 ft. Parallel All-Weather Runways
- FAA Air Traffic Control Tower 24/7/365
- On-site U.S. Customs
- Amazon Prime Air Freight Hub, FedEx Hubs, and UPS Ground
- Adjacent Hangar, Warehouse, and Office Space



# Alliance Westport

- Two Class I Rail Lines
- BNSF Intermodal Hub – 1M Lifts/Year
- 3,500 Trucks/Day
- Interstate Highway 35 from Mexico to Canada
- Foreign Trade Zone #196



# Alliance Gateway

- 19.4M SF developed
- Additional 4.1M SF of future build-out
- Frontage on SH-170 and US-377
- 400-acre dedicated data center campus
- Ability to deliver 400 megawatts at full build-out



# Corporate Residents

AllianceTexas has attracted some of the world's most globally recognized brands, across an array of industries, that can be partners in the Mobility Innovation Zone.

AUTOMOBILE	AEROSPACE/ AVIATION	FINANCIAL SERVICES	LOGISTICS	E-COMMERCE/ TECHNOLOGY	PHARMACEUTICAL/ HEALTHCARE	CONSUMER GOODS/SERVICES
						
						
		<i>charles SCHWAB</i>				
						
		Mercedes-Benz Financial Services				
		<i><b>Fidelity</b></i>				
						
		<b>Deloitte.</b>				
						<i>StanleyBlack&amp;Decker</i>
						

# AllianceTexas Mobility Innovation Zone

Leveraging the AllianceTexas Platform to Convene Corporates, Start-ups, Academics, Policy Makers to Create a Mobility Innovation “Do-Tank”

Uber Elevate



**BNSF**  
RAILWAY



**BF** BOOSTER

**Deloitte.**

**amazon**

**HL HILLWOOD**  
A PEROT COMPANY®



**FedEx**®

 **ALLIANCE**  
TEXAS



# A Unique Combination of Infrastructure Ecosystem

A comprehensive testing environment, AllianceTexas encompasses areas that represent multiple cities, regulatory environments, and industries to fully develop, from idea to commercialization, tools for tomorrow's market.



# The Mobility Innovation Zone:



INTERGRATES  
INNOVATIVE  
SMART  
INFRASTRUCTURE



FOSTERS  
INNOVATION  
ACROSS SUPPLY  
CHAINS



PROVIDES  
VALIDATION  
GROUND FOR  
FUTURE AVIATION  
TECHNOLOGY



LEVERAGES NEW  
EMERGING  
TECHNOLOGY



CONVENES  
ECOSYSTEM  
STAKEHOLDERS

# Mobility Innovation Zone Roadmap

## Activate

- Jump start initial use cases to demonstrate zone at AllianceTexas
- Outreach to regional stakeholders – regulators, policymakers, academic institutions and private sector

## Formalize

- Expand on the initial use cases and introduce new ones
- Promote the Mobility Innovation Zone opportunity and success to stories to local and national stakeholders

## Scale

- Facilitate growth into “living lab”, adjusting approach as needed
- Track & publicize economic development impact for the region



Thank you

