

Trinity River National Water Trail

Master Plan



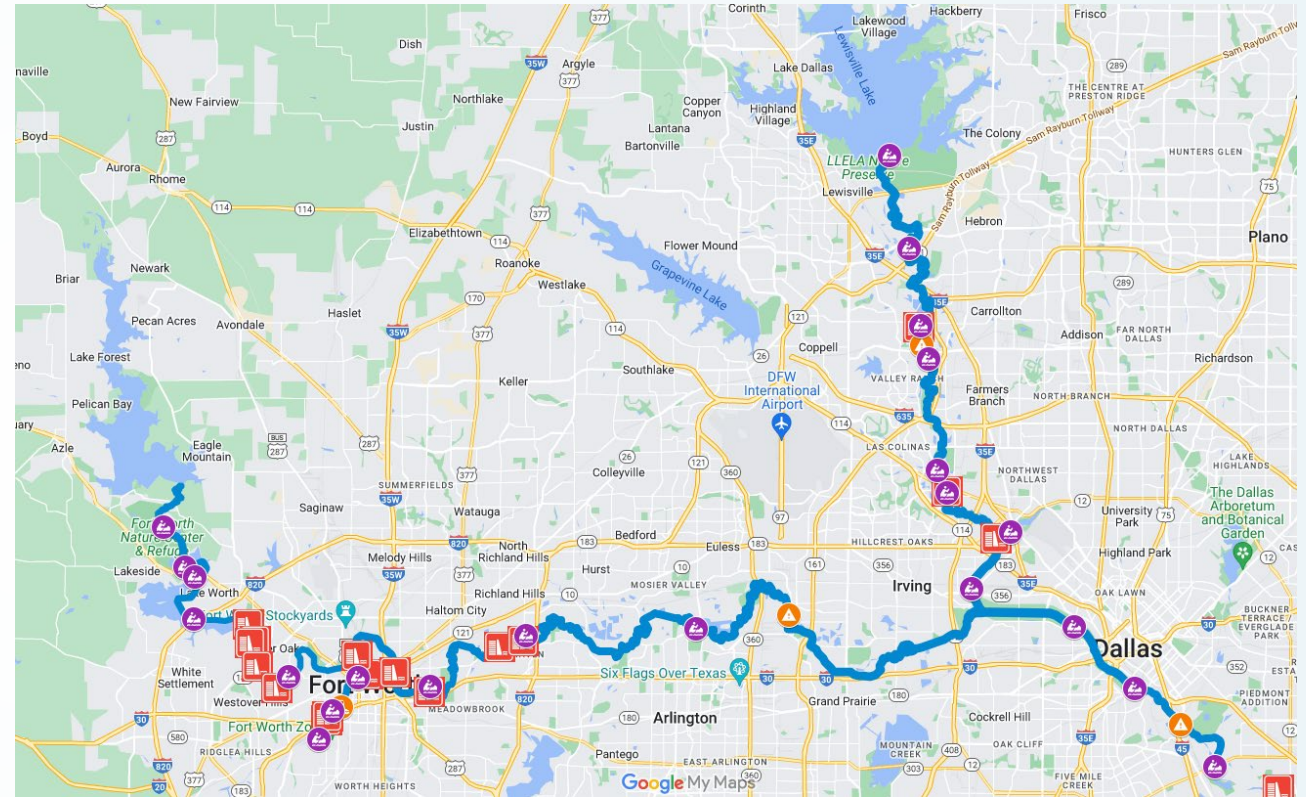
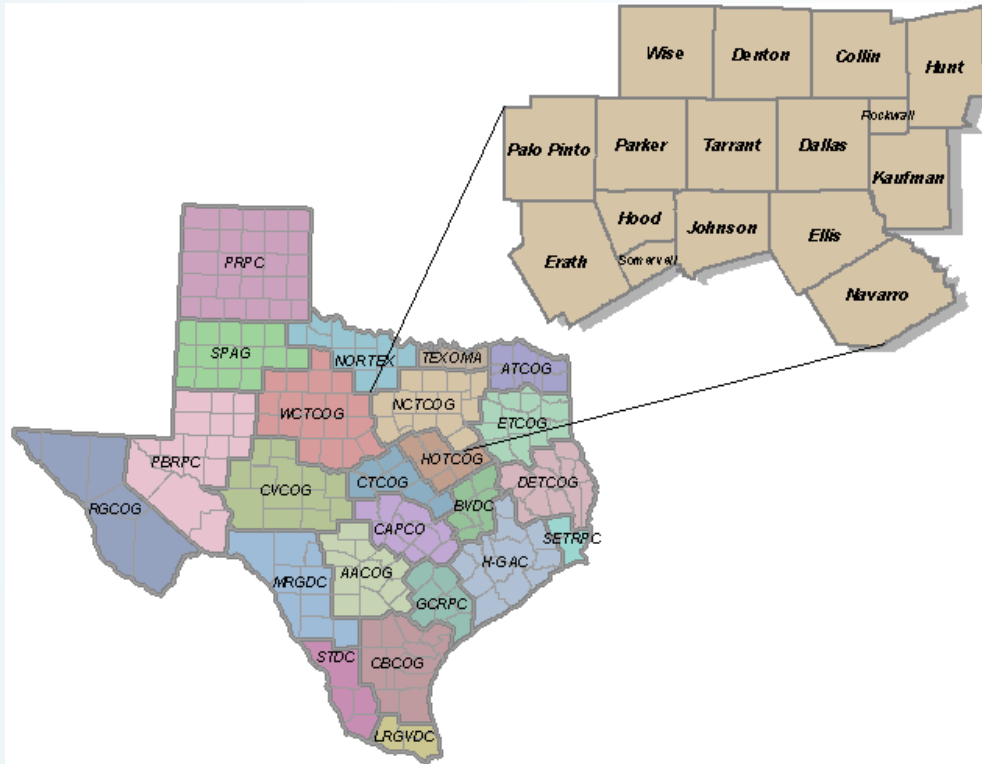
Agenda

- Background
 - Trinity River Water Trail Context
 - Vision & Goals
- Planning Phases
 - Phase 1
 - Phase 2
 - Phase 3
- Master Plan
 - Mapping Needs
 - Maintenance Needs
 - Promotion & Branding

Background



NCTCOG Region



Trinity River Trail Map



Rivers are a natural environment and constantly changing. Please check the local river gauges for current flow conditions. If you have questions, corrections, or updates to this map, email Teresa at teresa@trinitycoalition.org.



KEY	
	Launch Site
	Trinity River
	Park
	Airport

Vision & Goals



Vision for the Trail

- To assemble the various segments of the Upper Trinity River in North Texas into a fully integrated paddling trail.
- The Trinity River Water Trail covers 130 river miles, over nine cities and three counties. 21 launch sites along its length with access to 3 river tributaries and the main branch
 - Clear Fork
 - West Fork
 - Elm Fork

Goals for the Trail

- Develop new launch sites to shorten distances between sites
- Promote National Water Trail to cities and communities
- Make the trail more accessible
- Maintain condition of the existing and future launch sites
- Promote stewardship along the Trinity River
- Connect the Trinity River National Water Trail to the DFW Discovery Trail
- Extend the National Water Trail further south

Are there any additional goals we want to set for the Trinity River Corridor?

Vision for the Trail

- To assemble the various segments of the Upper Trinity River in North Texas into a fully integrated paddling trail.
- The Trinity River Water Trail covers 130 river miles, over nine cities and three counties, 21 launch sites along its length with access to 3 river tributaries and the main branch
 - Clear Fork
 - West Fork
 - Elm Fork

Goals for the Trail

- Develop new launch sites to shorten distances between sites
- Promote National Water Trail to cities and communities
- Make the trail more accessible
- Maintain condition of the existing and future launch sites
- Promote stewardship along the Trinity River
- Connect the Trinity River National Water Trail to the DFW Discovery Trail
- Extend the National Water Trail further south

Are there any additional goals we want to set for the Trinity River Corridor?

Vision for the Trail

- To assemble the various segments of the Upper Trinity River in North Texas into a fully integrated paddling trail.
- The Trinity River Water Trail covers 130 river miles, over nine cities and three counties. 21 launch sites along its length with access to 3 river tributaries and the main branch
 - Clear Fork
 - West Fork
 - Elm Fork

Goals for the Trail

- Develop new launch sites to shorten distances between sites
- Promote National Water Trail to cities and communities
- Make the trail more accessible
- Maintain condition of the existing and future launch sites
- Promote stewardship along the Trinity River
- Connect the Trinity River National Water Trail to the DFW Discovery Trail
- Extend the National Water Trail further south

Are there any additional goals we want to set for the Trinity River Corridor?

Planning Phases



Steps For Planning & Development

Trinity Coalition
NCTCOG
9 Riverfront Cities

- City of Dallas
- City of Fort Worth
- City of Arlington
- City of Grand Prairie
- City of Lewisville
- City of Irving
- City of Coppell
- City of Farmers Branch
- City of Carrollton

Dallas County

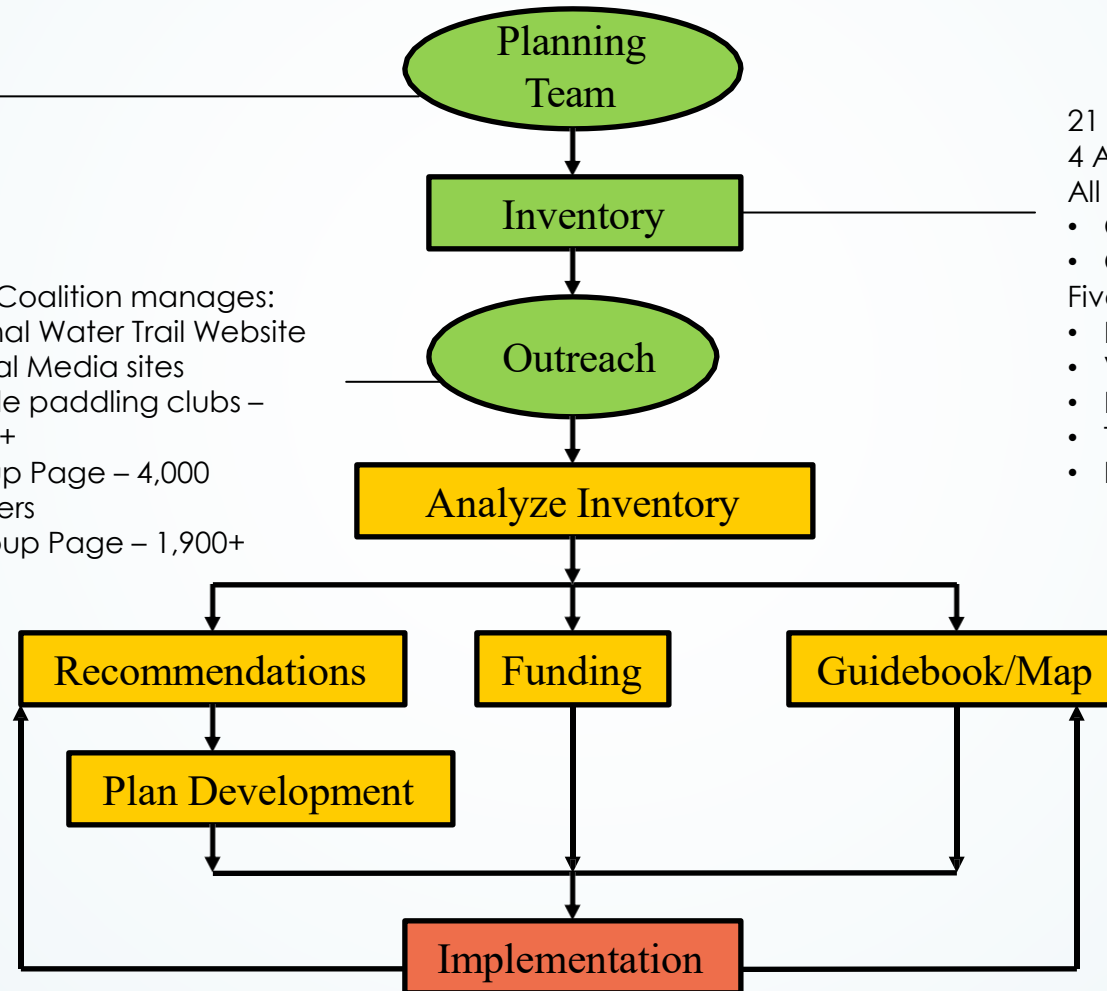
Trinity Coalition manages:
National Water Trail Website
4 Social Media sites
Multiple paddling clubs –
12,000+
Meetup Page – 4,000
paddlers
FB Group Page – 1,900+

21 Paddling Launch Site
4 ADA Accessible Launch Sites
All but 2 sections are 4-6 mile in length

- One 12-mile section
- One 24-mile section

Five Trail Expansion Sites

- Beltline Canoe Launch
- Viridian Canoe Launch
- Riverside Park Launch
- Trinity View Park Launch
- Lewisville Lake Paddling Loop



Partners, Stakeholders, & Interest Groups

Cities and Counties

City of Arlington
City of Carrollton
City of Coppell
City of Dallas
City of Farmers Branch
City of Fort Worth
City of Grand Prairie
City of Irving
City of Lewisville
Dallas County
Denton County
Tarrant County

Regional, State And Federal Partners

NCTCOG
United States Army Corps of Engineers
National Parks Service
Texas Department of Parks & Wildlife
Tarrant Regional Water District
Trinity River Authority

Non-Profits

Trinity Coalition
Texan By Nature
American Trails
Visit Dallas
Greenbelt Alliance
Streams & Valleys
Greenspace Dallas

Are there any groups that are not being engaged that should be?

Phase 1 of Implementation: Designation and Engagement

- Organize a collaborative river management team
- Submit a plan that meets the criteria for National Water Trail designation
- Develop river usage policies that minimize impact at water access locations
- Promote public awareness about the benefits of the Trinity River Water Trail
- Develop a Water Trail website
- Create Water Trail maps and guides

Phase 2 of Implementation: Operations

- Develop a monitoring and reporting mechanism to document usage
- Define a standard of river mileage
- Develop a financial plan
- Implement a signage and wayfinding system

What are cities currently doing?

Phase of Implementation: Phase 3 – Long Range Planning

- Infrastructure improvements to water accesses, launch sites, put-ins, rest stops, and portages
- Define and determine recommendations for:
 - Maintenance
 - Mapping
 - Promotion & Branding
- Create a master plan for future development and recommendations for the Trail

Phase of Implementation: Action Items

- Analyze inventory of Phase 1 & 2 deliverables
- Define goals for maintenance plan, mapping plan, and promotion and branding plan
- Discuss recommendations

Master Plan Discussion



Master Plan Outline

Overview of the National Water Trail

- ▶ History & Background

Planning Process

Goals

- ▶ Education and Safety
- ▶ Stewardship & Conservation
- ▶ Community Engagement
- ▶ Maintenance
- ▶ Planning
- ▶ Funding Strategies

Inventory of the Trinity River and Surrounding Parks/Trail

- ▶ Community Based Assessments
- ▶ Demand & Users
- ▶ Accessibility
- ▶ Gaps in Connectivity

Task Force Recommendations

- ▶ Launch Site Expansion
- ▶ Design Concepts
- ▶ Prioritize Locations
- ▶ Portals & Branding

Mapping Needs

Current Ideas

- Incorporating existing land trails and parks
 - Bike paths
 - Hiking Trails
 - Nature Preserves
 - Nature Centers
 - Dallas Off-Road Bicycle Association
 - Area Lakes
- Map points of interest and services along the water trail

Trinity River Trail Map

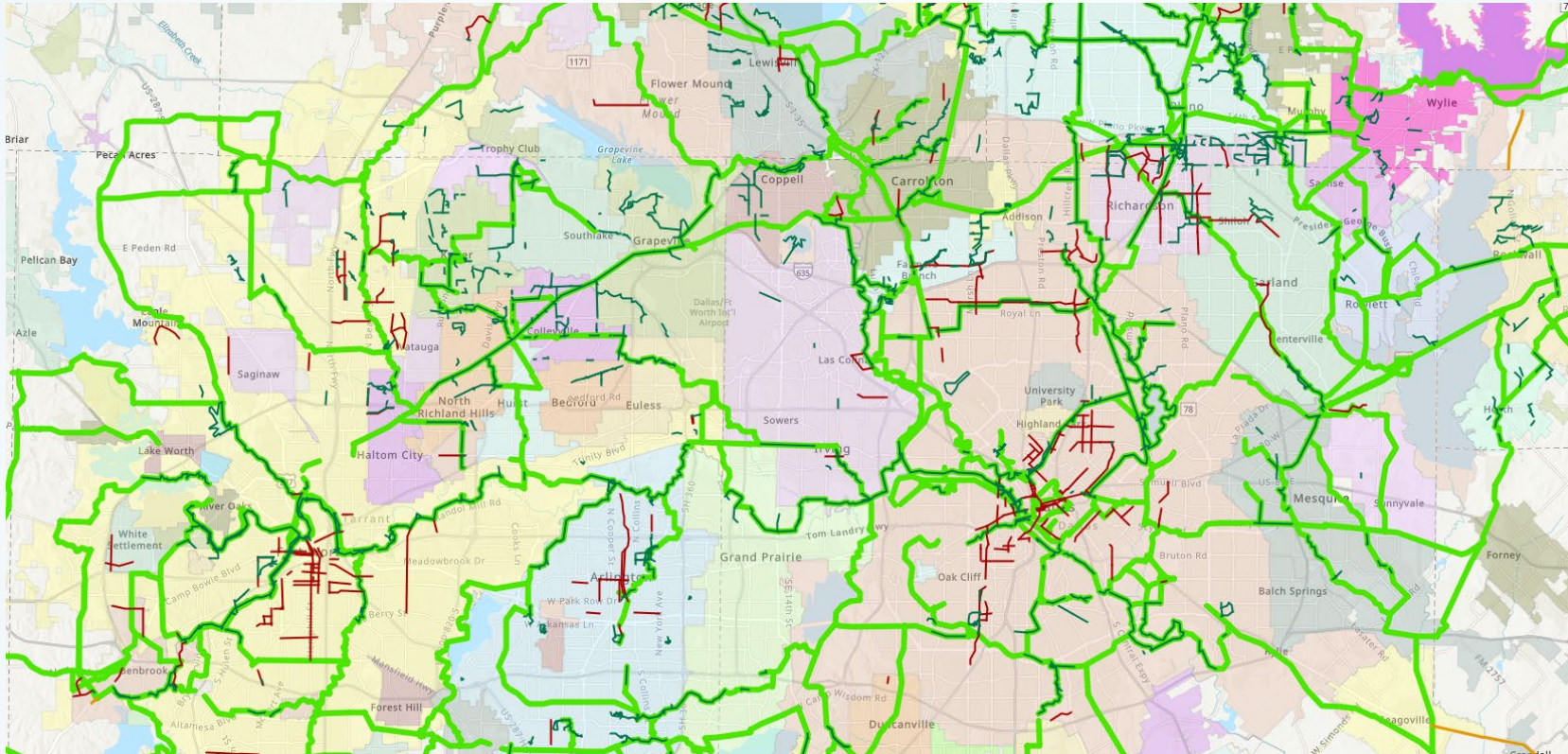


Rivers are a natural environment and constantly changing. Please check the local river gauges for current flow conditions. If you have questions, corrections, or updates to this map, email Teresa at teresa@trinitycoalition.org.

What other amenities should be mapped?

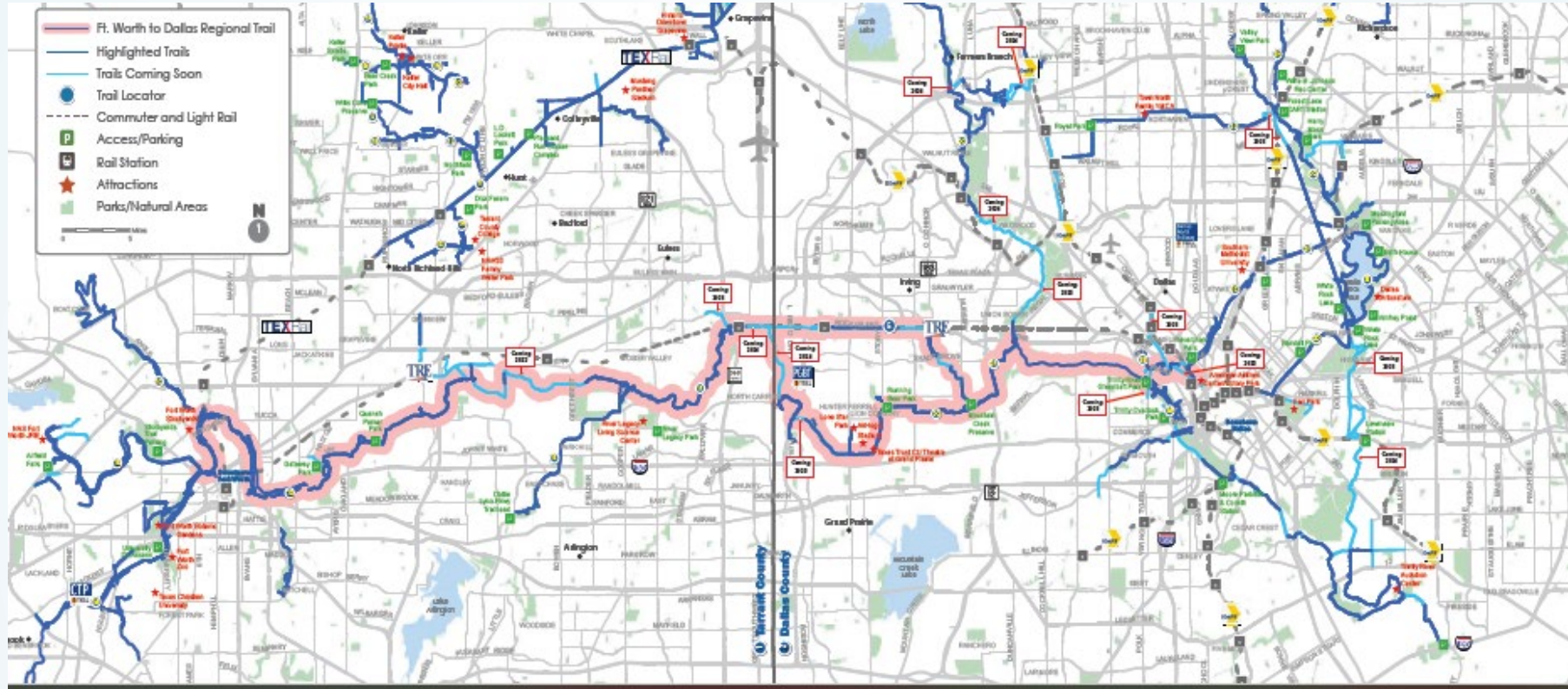


DFW Veloweb



The active transportation network in the region consists of 8,618 miles of regional shared-use paths (Regional Veloweb), supporting community shared-use paths, and the on-street bikeway network (including on-street wide shoulders in rural areas) in various stages of development.

DFW Discovery Trail



The DFW Discovery Trail is an initiative of five core cities of the Dallas-Fort Worth Region to create a continuous regional trail from Downtown Fort Worth to Downtown Dallas. Currently various sections of the trail are open in each of the cities and will be approximately 66 miles once completed.

Mapping Questions

- ▶ Is trip planning information (directions, access, logistics) easily accessible?
- ▶ Are there detailed segment maps for navigation?
- ▶ Is there an interactive online map or online application for navigation? (All Trails App)
- ▶ Does the guidebook/website have detailed paddling descriptions, distances, and information?
- ▶ Are regulations clearly posted and written on maps and guidebooks?
- ▶ Are dams and other hazards clearly and consistently signed on maps and on the water trail itself?
- ▶ Are current flow conditions including flood available through a wide variety of channels?

Maintenance & Infrastructure Needs

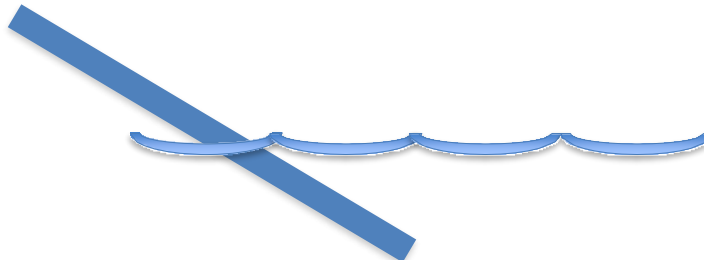
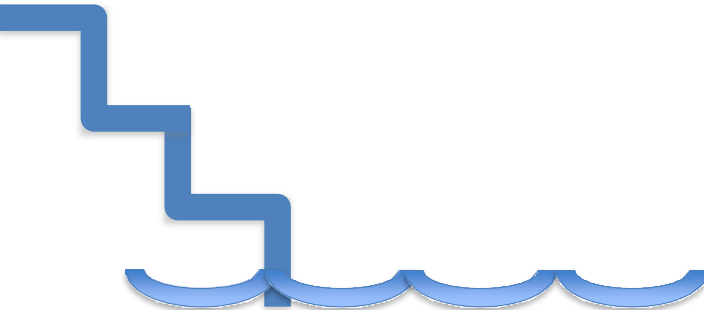

Infrastructure Needs

- New Launch Sites
 - Grand Prairie – Beltline Canoe Launch
 - Arlington – Viridian Canoe Launch
 - Irving – Trinity View Park Launch
 - Fort Worth – Riverside Park Launch
 - Lewisville – Lewisville Lake Paddling Loop
- Trail Signage

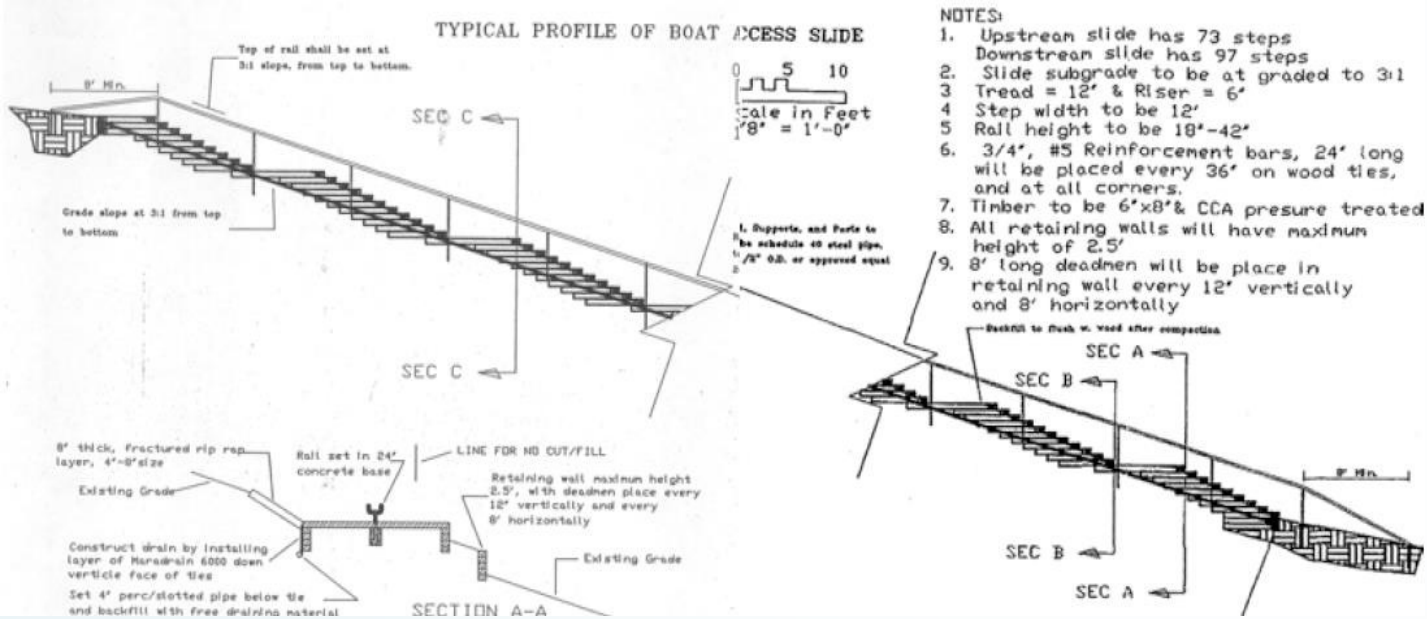
Maintenance Needs

- Repair and Restoration of Launch Sites
- Standard Operations and Procedures
- Water Trail Cleanups

Maintenance & Infrastructure Needs

<p>Ramps</p> <p>Perfect for gradually sloped banks. Various materials are used depending on the desired or necessary characteristics of your site.</p>	 A diagram showing a blue ramp structure on a sloped bank. The ramp is a thick blue line sloping downwards from left to right. Below the ramp, there are three blue, curved, wave-like structures representing the water surface.
<p>Stairs</p> <p>On sites where the banks are too steep to access by a ramp, stairs are an appropriate launch option.</p>	 A diagram showing a blue stairs structure on a steep bank. The stairs are a thick blue line with several horizontal steps descending from left to right. Below the stairs, there are three blue, curved, wave-like structures representing the water surface.
<p>Elevated</p> <p>Elevated launches can be used to bypass environmentally sensitive areas or areas of unstable ground. They are an appropriate choice for bulk-head banks as well.</p>	 A diagram showing a blue elevated launch structure. It consists of a thick blue horizontal bar positioned above the water surface. Below the bar, there are three blue, curved, wave-like structures representing the water surface.

Design for Fluctuating Waters



NOTES:

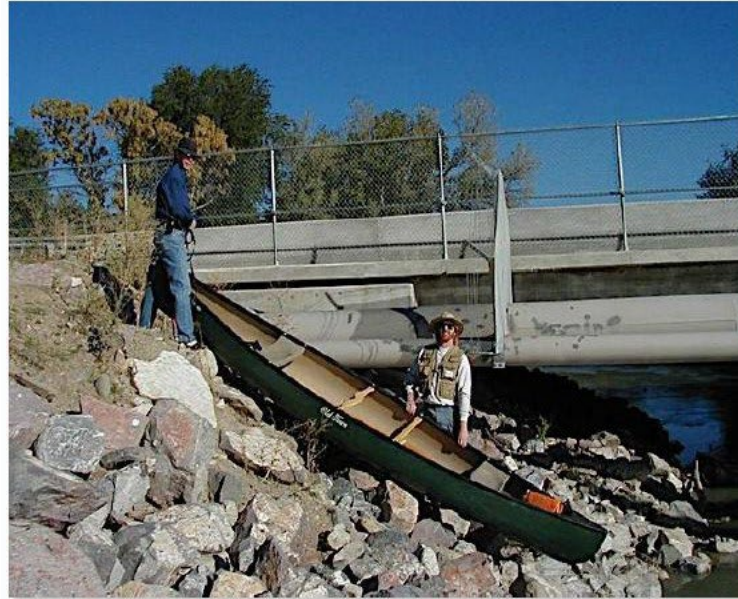
1. Upstream slide has 73 steps
Downstream slide has 97 steps
2. Slide subgrade to be at graded to 3:1
3. Tread = 12' & Riser = 6'
4. Step width to be 12'
5. Rail height to be 18"-42"
6. 3/4", #5 Reinforcement bars, 24' long will be placed every 36' on wood ties, and at all corners.
7. Timber to be 6"x8' & CCA presure treated
8. All retaining walls will have maximum height of 2.5'
9. 8' long deadmen will be place in retaining wall every 12' vertically and 8' horizontally



Design for Ease of Access



Example of a launch that is too high!



Poor Design: Steep slope, rugged terrain



Good Design: Wide, sturdy staircase

Maintenance & Infrastructure Questions

Launch & Access Site Needs

- ▶ Are launches large enough to accommodate daily users?
- ▶ Do the designs comply with regulations/NPS Recommendations?
- ▶ Are launches designed with accessibility in mind?
- ▶ Is there a way to communicate with water trail users in case of an emergency?

Signage

- ▶ Is there a plan for creating and locating signs?
- ▶ Do signs along the water trail follow consistent standards ?
- ▶ What information do signs provide (safety, navigation, distance, hazards)?

Trail Maintenance

- ▶ Who maintains which segments of trail?
- ▶ **Are there partnership or adopt-a-trail agreements?**

Promotion & Branding



Trinity River Paddling Trail
Lewisville Lake Environmental Learning Area

Current location:
LLELA
Lewisville Lake
Environmental
Learning Area
DD: 33.067109° -
96.964697°

Next Take-out:
Hebron
Parkway Rd
~6 miles /
~ 2.5 hrs
DD: 33.012600° -
96.950689°

This section has Cell coverage. In case of emergency call 911. River section LLELA to Huffines Park at Hebron Parkway, Lewisville

River conditions: this section of the river starts out with shallow fast moving current. Downstream the river widens and slows. **Hazards:** please watch for fallen trees that can go completely across the river.

<http://www.playlewisville.com/>

For more information: <https://trinitycoalition.org/>

Promotion & Branding

- ▶ How should the trail be marketed to cities and residents? (Water Bills?)
- ▶ What economic benefits should be promoted?
- ▶ Are there classes, workshops, or educational seminars for paddlers to get involved?
- ▶ Are there programs, tours, or events aimed specifically at new paddlers?
- ▶ Is there safety training available (swift water rescue, boater safety, proper PFD use)?

Next Steps?

- ▶ Trinity Coalition Action Items
- ▶ NCTCOG Action Items
- ▶ Working Group Action Items

Contact

Dale Harris

Trinity River Paddling Trail Chair

Trinity Coalition

dale@trinitycoalition.org

972.814.2633

Teresa Patterson

Trinity River National Water Trail Manager

Trinity Coalition

teresa@trinitycoalition.org

214.478.7856

Erin Blackman

Environment & Development Planner

North Central Texas Council of Governments

ERBlackman@nctcog.org

817.608.2360

Connect



Facebook.com/TrinityRiverCoalition



Meetup.com/DFWPaddlesports

www

TrinityCoalition.org

www

NCTCOG.org/Envir

Materials from past meetings can be viewed at:

<https://nctcog.org/envir/committees/trinity-river-national-water-trail-task-force>