



# TxDOT's Statewide MS4 Permit and SWMP Overview

*Prepared for:*

North Central Texas Coalition of Governments (NCTCOG)

Upper Trinity River Basin Coordinating Committee





**1** TxDOT's Statewide MS4 Permit

**2** SWMP & MCMs Overview

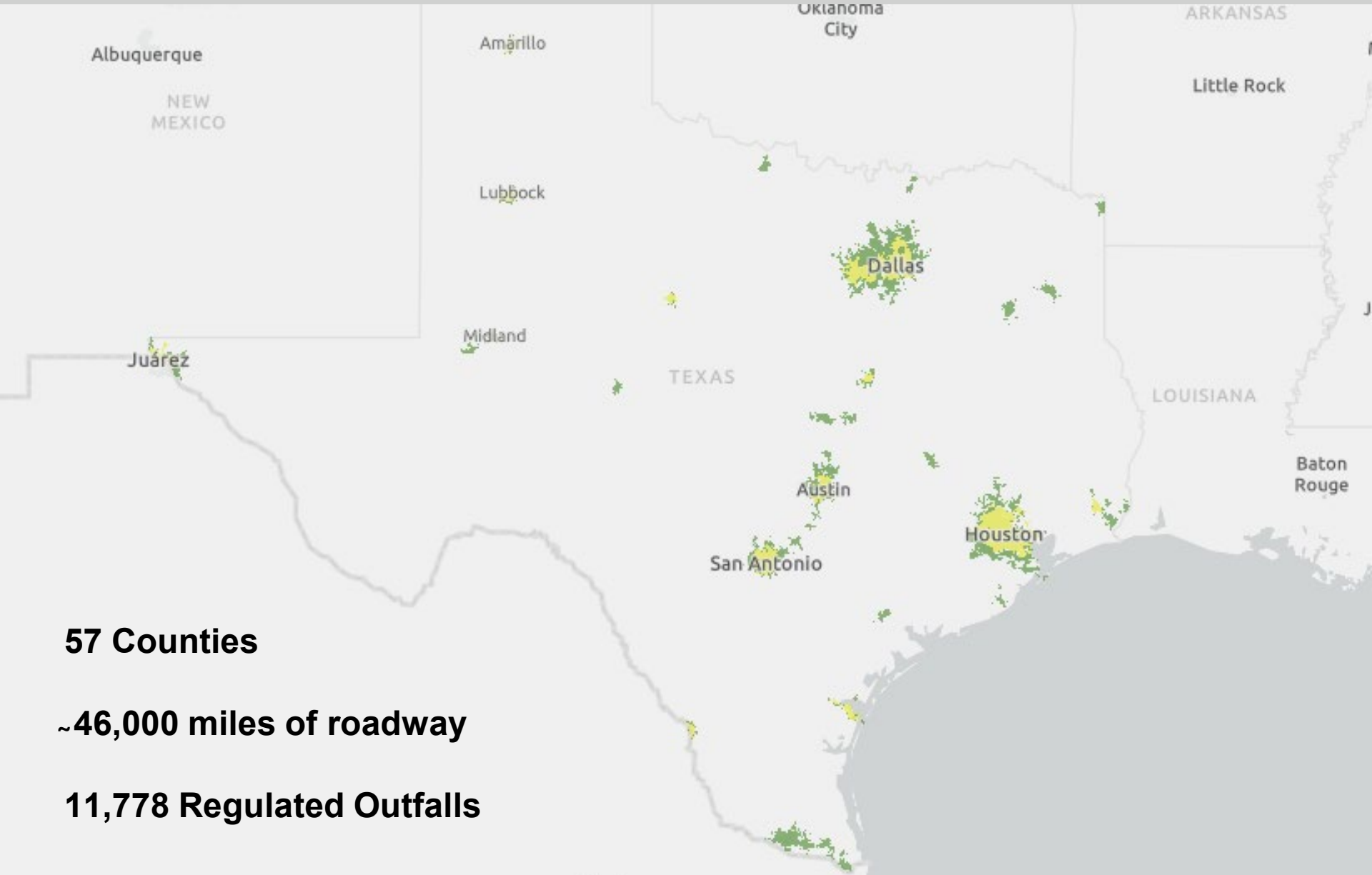
**3** Ongoing Permit Renewal

TxDOT's Statewide MS4 Permit covers stormwater discharges from the storm sewer system associated with the State Right-of-Way (ROW) within both Phase I and Phase II MS4-regulated areas throughout the state.

TxDOT is considered a non-traditional MS4 operator.



# TxDOT's Statewide MS4 Permit



**57 Counties**

**~46,000 miles of roadway**

**11,778 Regulated Outfalls**



TxDOT's Statewide MS4 Permit requires a Statewide Stormwater Management Program (SWMP).

- Requires various BMPs to be developed and implemented that address requirements of the 5 Minimum Control Measures (MCMs).
- Annual reporting of milestones and progress towards achieving goals. District-specific reporting metrics incorporated.

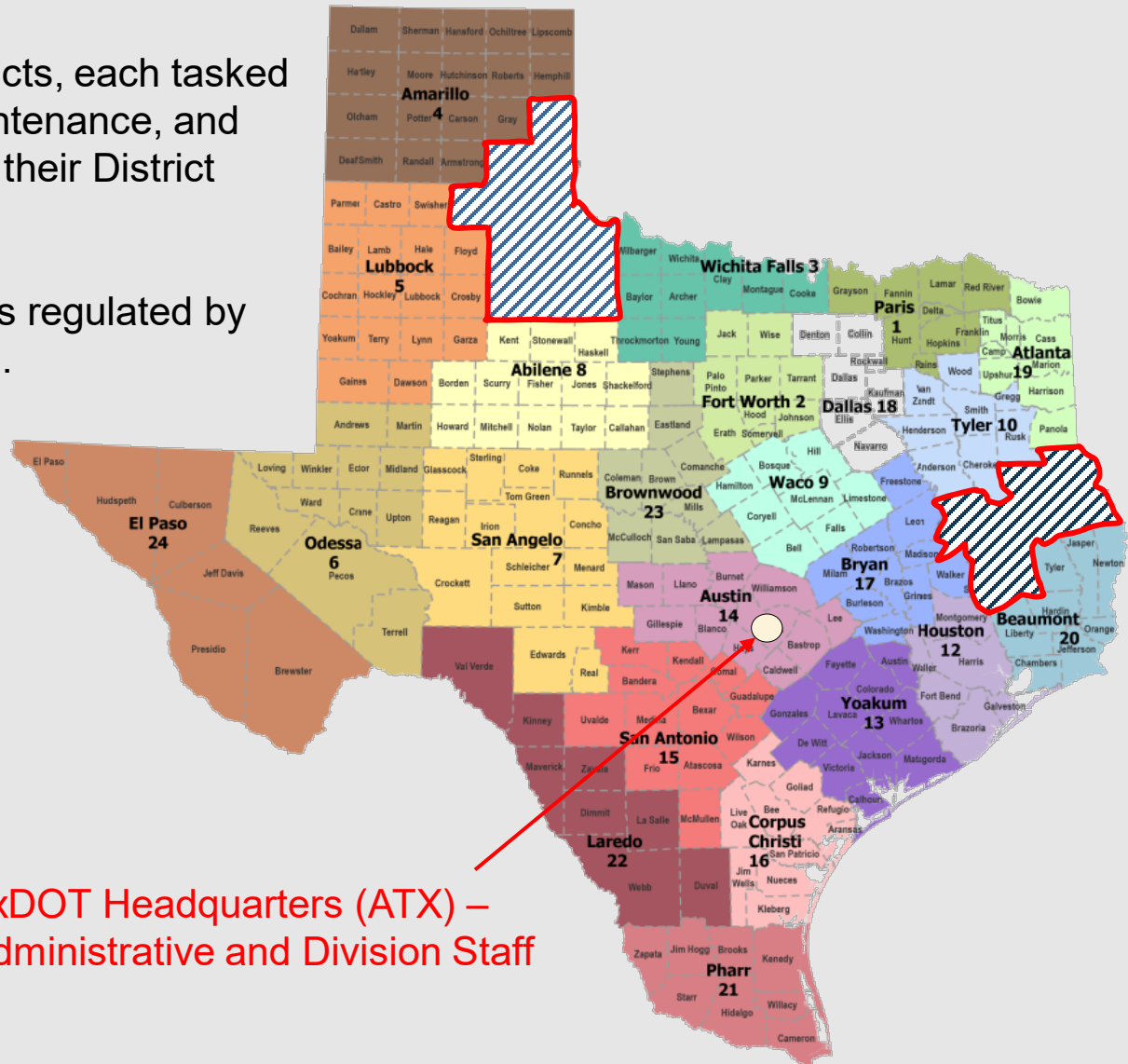


# TxDOT's Statewide MS4 Permit



TxDOT is broken up into 25 districts, each tasked with managing construction, maintenance, and access for the State ROW within their District boundaries.


23 of these Districts include areas regulated by the TPDES MS4 Permit Program.



TxDOT Headquarters (ATX) –  
Administrative and Division Staff



TxDOT's current SWMP and Annual Reports can be found on the Stormwater Management Program [webpage](#).



[Discover Texas](#) [Data and maps](#) [Do business](#) [Explore projects](#) [Stay safe](#) [About](#) [English](#)

[Home](#) / [...](#) / [Environmental](#) / [Stormwater Program](#)

## Stormwater Management Program

The Stormwater Management Program (SWMP) is a comprehensive program to manage the quality of discharges from the municipal separate storm sewer system (MS4). TxDOT uses a statewide SWMP to maintain compliance with TCEQ permit WQ0005011000.

### Minimum control measures

The Texas Commission on Environmental Quality requires that the SWMP must contain a specified number of minimum control measures (MCMs).

### Required minimum control measures

<https://www.txdot.gov/business/resources/environmental/stormwater/stormwater-management-program.html>

## MCM1 - Public Education, Outreach, and Involvement

*Implementing stormwater education/outreach programs and public involvement through implementation of the SMWP.*

TxDOT's BMPs focus on trash and illegal dumping.

- Don't Mess with Texas
- Adopt A Highway
- Texas Highways Magazine





## MCM2 - Illicit Discharge Detection and Elimination (IDDE)

*Implementing and enforcing\* a program to detect, investigate, and eliminate illicit discharges into the MS4.*

TxDOT's BMPs include:

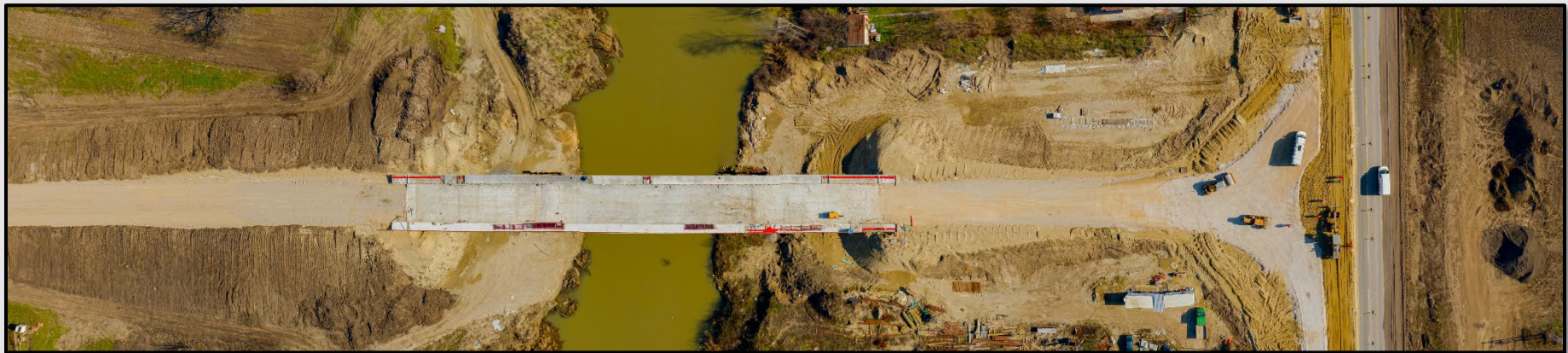
- MS4 Outfall Mapping ([AOTS](#))
- Dry Weather Screening
- IDDE Source Investigation



## MCM3 - Construction Site Stormwater Runoff Control

*Implementation and enforcement of a program requiring the permittee's small and large construction activities to employ stormwater control measures.*

- Plan Review, Pre-Construction Meetings, Complaint Follow-Up
- TxDOT/Contractor Training
- Construction Stage Gate Checklist (CSGC) – Compliance Oversight Inspection





## MCM3 - Construction Site Stormwater Runoff Control

### Key Differences From Traditional MS4s:

- 1) Does not include requirements for enforcing construction site stormwater compliance (CGP Compliance) for private construction projects.\*
- 2) *Contractional Enforcement* for our contractors to comply with the CGP (and all other applicable environmental regulations).





Discover Texas ▾ Data and maps ▾ Do business ▾ Explore projects ▾ Stay safe ▾ About ▾ 🔍

[Home](#) / [About](#) / [Programs](#) / [Environmental programs](#)

## TxDOT MS4 Discharge Notification

### Environmental programs

[NEPA Assignment Documentation](#)

[Clean Air Plan](#)

[Mitigation banks](#)

[TxDOT MS4 Discharge Notification](#)

[Environmental Impact Statement Reports](#)

[Air quality](#)



Many NPDES and TPDES discharge permits include conditions requiring the submittal of various notices to the operators of any Municipal Separate Storm Sewer Systems (MS4s) expected to receive discharge from the activity. If you are required to notify TxDOT of discharges in accordance with your NPDES or TPDES permit, use the submission form below to complete this action. When completing the form, you will need to be sure to include information that is consistent with your permit/application, as well as attach any necessary documents.

Please note that, per Part II.C of TxDOT's MS4 permit, TxDOT retains the authority to disallow discharges (including TPDES-permitted discharges) into the TxDOT right-of-way under certain conditions.

[Submission Form](#)

### How do I know if my project will discharge to TxDOT's MS4?

Below is a link to the TxDOT MS4 AOTS, which shows TxDOT's MS4 areas. TxDOT's MS4 area is



TEXAS DEPARTMENT OF TRANSPORTATION

### Environment Web Form

#### Regulated Discharge Notification Form

✓ Site Information

Site Contact

Certify and Submit

All the fields are required and completed to submit the form

Project/Site Information

Operator Name

Site Name

Regulated Entity Number (RN No.)

NPDES/TPDES Permit No.

Project/Site Location

Project/Site County

Description of Activity

Attachments

Attach

Attachments

Attach

Attachments

Attach

Next



## MCM4 - Post-Construction Stormwater Management in New Development/Redevelopment

*Implementation and maintenance of structural and non-structural BMPs appropriate for the community and that protects water quality.*

- Post-Construction Stormwater Controls for State ROW Construction Projects.
- Long-term maintenance for State-owned and operated drainage facilities and Post-Construction Stormwater Controls.



## MCM4 - Post-Construction Stormwater Management in New Development/Redevelopment

### Key Differences from Traditional MS4s:

1) TxDOT does not have the power to regulate the design of post-construction stormwater controls for private property – MCM4 only applies to department projects.





## MCM4 - Post-Construction Stormwater Management in New Development/Redevelopment

### Challenges of incorporating post-construction water quality considerations into highway design:

Mitigating for runoff quality while maintaining a safe and reliable transportation system.

- Need for Expeditiously Removing/Draining Runoff from Travel Lanes
- Space Considerations Associated with the Linear Nature of Highway Construction Projects.
- Applicable State and Federal Laws
- Construction & Maintenance Costs



## MCM4 - Post-Construction Stormwater Management in New Development/Redevelopment

Practices that mimic pre-development hydrology and diffuse stormwater runoff over a larger area are commonly employed.

Structural Controls such as detention ponds, water quality ponds, stormwater vaults are utilized when project conditions warrant or require.





## MCM5 - Pollution Prevention and Good Housekeeping for Transportation Operations

*Program requirements for mitigating pollutant runoff from operations and maintenance activities and facilities.*

- Policies, Procedures, and Employee Training Programs
- Facilities Inventory
- Facilities Environmental Compliance (FEC) Surveys





<https://www.txdot.gov/business/resources/environmental/stormwater.html>

## Municipal separate storm sewer system (MS4)

TxDOT's statewide [Municipal Separate Storm Sewer System \(MS4\)](#) permit is required to discharge stormwater from ditches and storm sewers in areas that meet certain population and population density criteria. This permit requires that we implement a Stormwater Management Program (SWMP) that describes Minimum Control Measures (MCMs) designed to decrease trash and illegal pollutants that come into our storm sewer system, and improve the quality of stormwater that comes out of it.

- [MS4 Stormwater Management Program](#)
- [Submitting your Notice of Intent to discharge to TxDOT's MS4](#)

TxDOT is in the process of renewing our Statewide MS4 Permit (WQ0005011000). The Texas Commission on Environmental Quality (TCEQ) declared TxDOT's application administratively complete on March 30, 2022. The permit application can be [downloaded](#). ~~The permit application can also be viewed in person at the following TxDOT District offices after April 29, 2022:~~

- Abilene District Office
- Amarillo District Office
- Atlanta District Office
- Austin District Office
- Brownwood District Office
- Beaumont District Office
- Bryan District Office
- Corpus Christi District Office
- Dallas District Office
- Fort Worth District Office

## Permit renewal frequently asked questions

- [Frequently Asked Questions – English](#)
- [Preguntas Frecuentes – Español](#)
- [Các Câu hỏi Thường gặp – Vietnamese](#)

View TxDOT's MS4 permit renewal application by visiting our Stormwater webpage (link at the top) and downloading the permit application.



Questions?



## TxDOT Environmental Affairs Division – Operations Compliance Team

Kyle Honnerlaw

**MS4**

[Kyle.Honnerlaw@txdot.gov](mailto:Kyle.Honnerlaw@txdot.gov)

Tracey Janus, P.G.

**Operations Compliance Team Lead**

[Tracey.Janus@txdot.gov](mailto:Tracey.Janus@txdot.gov)

David Nuckels

**Facilities Environmental Compliance**

[David.Nuckels@txdot.gov](mailto:David.Nuckels@txdot.gov)

Heather Carman

**Construction Stormwater**

[Heather.Carman@txdot.gov](mailto:Heather.Carman@txdot.gov)