

NCTCOG PRESENTATION

Transportation Alternatives Set-Aside Program

2022 Call for Projects
for the North Central Texas Region

Virtual Public Workshop

7.19.2022

Workshop Overview

- Mobility 2045 Policies and Priorities
- 2022 Transportation Alternatives Set-Aside (TA) Call for Projects – Program Overview
 - Guidelines
 - Evaluation and Scoring
- Application Overview
- Project Implementation
 - Project Schedule
 - Coordination with TxDOT
 - Project Budget
- Program Schedule





Mobility 2045 Policies and Priorities

Mobility 2045 (2022 Update)

Policy BP3-002: Implement pedestrian and bicycle facilities

- **Active Transportation Network Implementation**
 - Close Gaps and Improve Connectivity in the Regional Veloweb, On-Street Bikeway Network, and Pedestrian Network
 - Linkages to Transit and Major Destinations
 - Pedestrian Network
 - Safe Routes to School
 - Environmental Justice Areas and Transit-Dependent Populations
- **Safety Improvements**
- **Americans with Disabilities Act (ADA)**



Mobility 2045 (2022 Update) (cont.)

Federal Performance Measures

Safety Category

- Number of non-motorized fatalities and non-motorized serious injuries

Air Quality Category

- Percent of non-single occupant vehicle (SOV) Travel



Source: Microsoft





Overview

**2022 Transportation Alternatives
Set-Aside Program Call for Projects**

Eligible Project Activities

May include:

- Shared-Use Paths (Trails)
- On-Street Bikeways
- Sidewalks, Crosswalks, Curb Ramps
- Pedestrian and Bicycle Safety Countermeasures and Technology
- Protected Intersections
- Education Activities for Safe Routes to School Projects



Source: NCTCOG



Application Categories and Projects

Eligible Projects	Active Transportation	Safe Routes to School Must be within 2 miles of a school	Safe Routes to Rail Must be within one half-mile of a rail station	Safety and Technology
Bicycle Parking	○	○	○	-
Bicycle and/or Pedestrian Count Equipment	○	-	-	●
Crossing Safety Improvements (HAWK, RRFB, refuge islands, etc.)	○	○	○	●
Education Activities for Safe Routes to School	-	●	-	-
On-Street Bikeways (separated bike lanes, bike boxes, etc.)	●	○	○	-
Pedestrian Improvements (sidewalks, crosswalks, curb ramps, etc.)	○	●	●	●
Pedestrian Scale Lighting	○	○	○	●
Protected Intersections	○	○	○	●
Road Diets	●	○	○	○
Shared-Use Paths (Trails)	●	○	○	-

● Primary eligible project in an application

○ Supporting eligible project in an application

(-) Not Eligible



Eligible Project Sponsors

- Local Governments
- Regional Transportation Authorities
- Transit Agencies
- Tribal Governments
- School Districts, Local Education Agencies, or Schools*
- Nonprofit entities*
- Other local or regional governmental entity with responsibility for oversight of transportation or recreational trails

*Entities are strongly encouraged to coordinate with a local government agency to serve as the Project Sponsor.



Funding Overview

Approximately \$40+ million in federal funding is anticipated to award

<i>Project Activity</i>	<i>Minimum Federal Funding Award per Project</i>	<i>Maximum Federal Funding Award per Project</i>
Construction	\$500,000	No Limit
Safe Routes to School Education Activities	\$250,000	



Funding Overview (cont.)

Construction-implementation projects

- Engineering and Environmental Phases: 100 percent locally funded
- Construction Phases: Minimum 20 percent local match

Safe Routes to School education activities: Minimum 20 percent local match

Local match must be cash or Transportation Development Credits (TDCs)

- No in-kind contributions
- Reimbursement up to 80% of eligible project costs (up to 100% if using TDCs)



MTP Policy Bundle Transportation Development Credits

Agencies may request use of existing TDCs (in lieu of local match) if qualified through the MTP Policy Bundle process (and have a remaining balance).

- Contact NCTCOG staff if your agency does not know the current balance of existing TDCs.



*Agencies with a balance of TDCs:

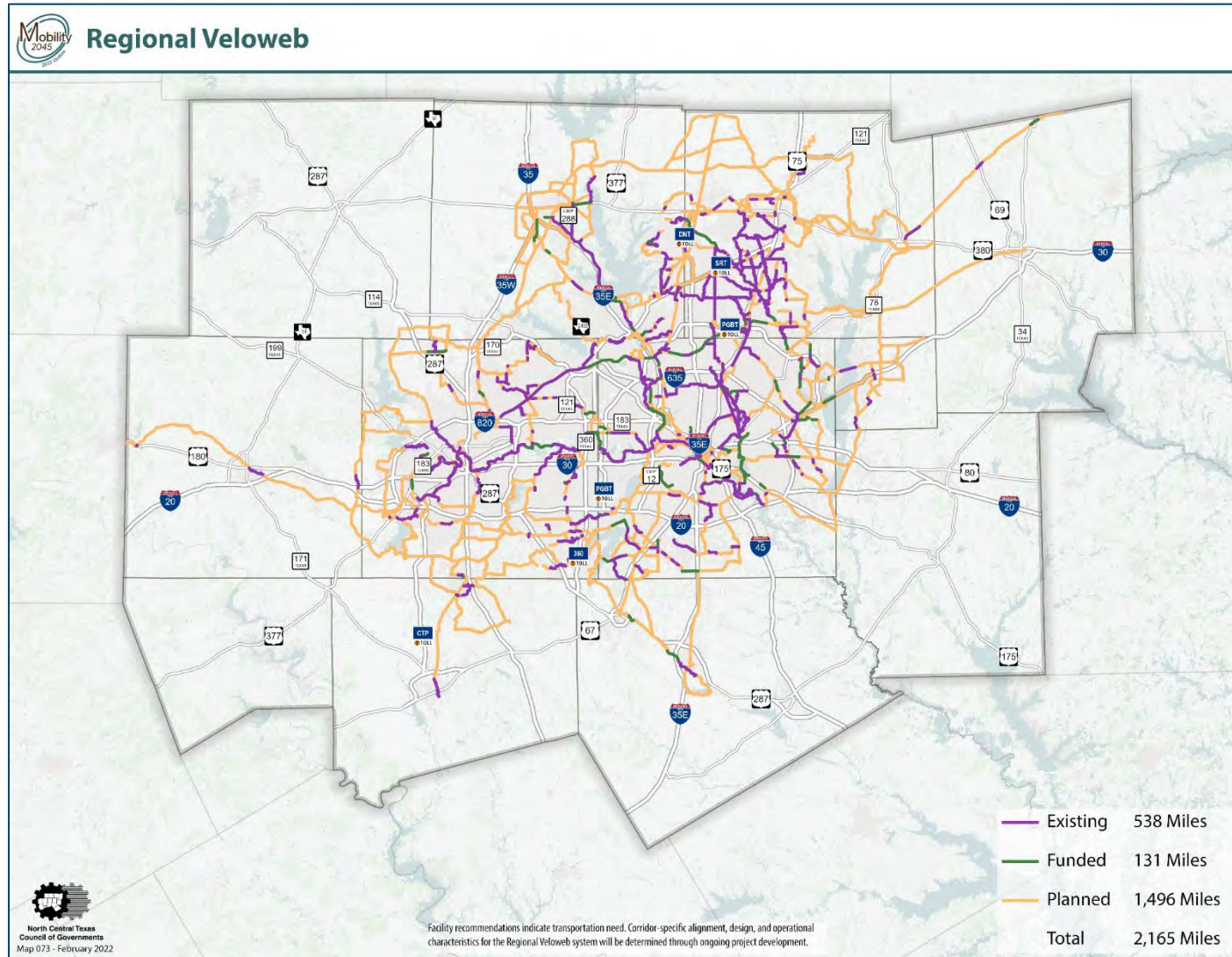
Arlington	Lewisville
Corinth	McKinney
**Dallas	Mesquite
Denton	North Richland Hills
DCTA	Plano
Duncanville	Richardson
Frisco	Terrell
Grand Prairie	Trinity Metro
Grapevine	
Irving	



Regional Transportation Council Transportation Development Credits

Agencies may also request Regional Transportation Council (RTC) Transportation Development Credits (TDCs) (in lieu of a local match) for projects implementing the Regional Veloweb as identified in Mobility 2045 (2022 Update).

Use of RTC TDCs will be limited to two applications per agency.



Program Rules (Required Documentation)

- **Funding Commitment**

Confirm the availability of the local match contribution or the requested use of TDCs in lieu of local cash match

- **Right-of-Way/Easement**

Property must be under public ownership. If easement cannot be obtained by deadline, a consent letter from the “public” property owner or utility company is required. Pending easements on private properties are not eligible.

If Applicable:

- **Railroad Right of Entry Letter/Agreement**

(if project is in railroad right-of-way)

- **TxDOT District Engineer Letter of Consent**

(if project is in TxDOT right-of-way)

- **Letter of Support from School District Superintendent or Top Administrator**

(SRTS Projects Only)

- **Documentation of Support from Supporting Entity**

(if project includes or crosses another jurisdiction)



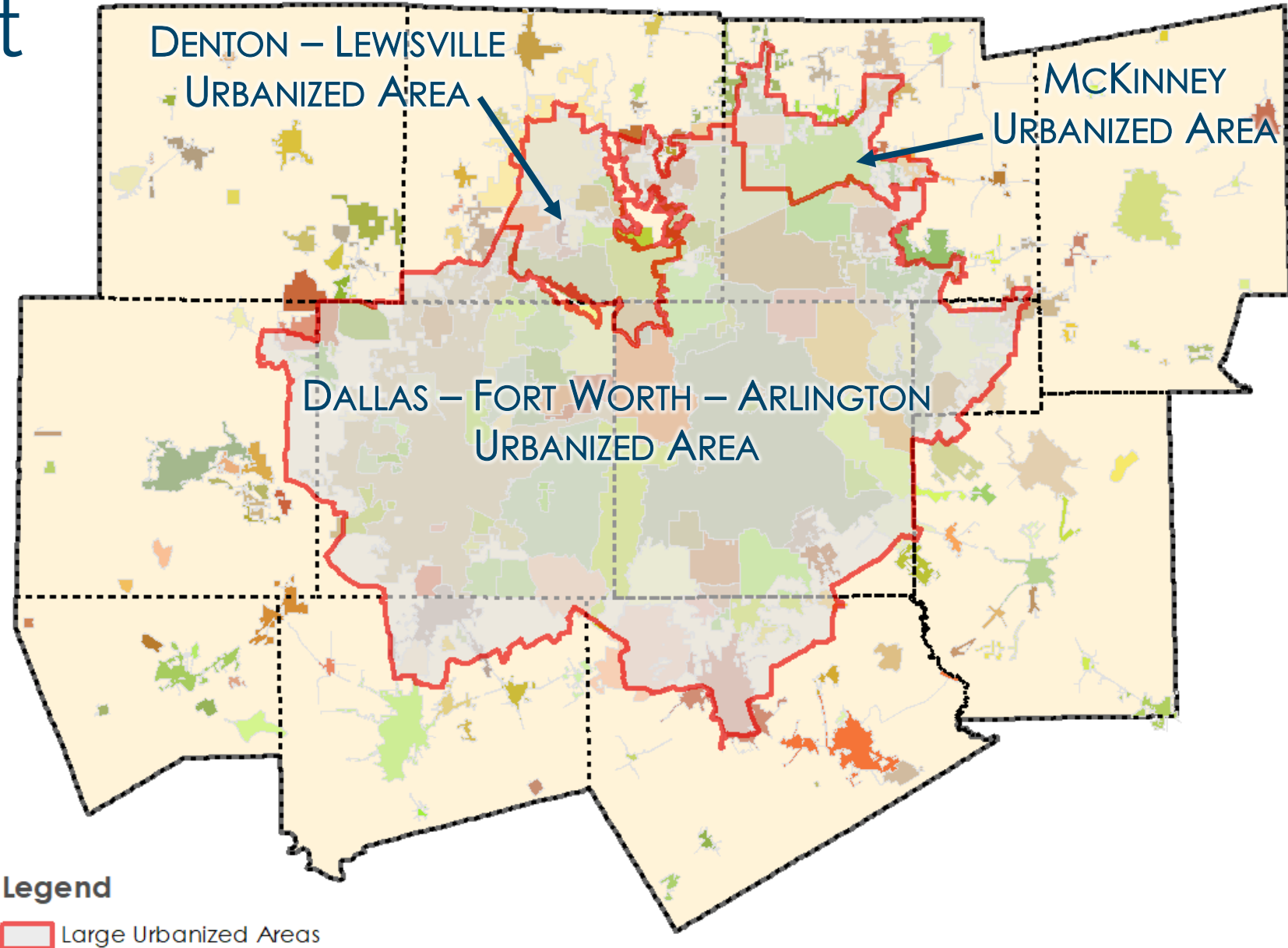
Program Rules (cont.)

- Project sponsor must execute an agreement (LPAFA) with TxDOT within one year of the funding award by the RTC
- Projects must advance to construction within three years (or less) of the funding award by the RTC or the funding may be reprogrammed
- Projects must be implemented consistent with the funding application as approved by the RTC and as included in the project agreement with TxDOT



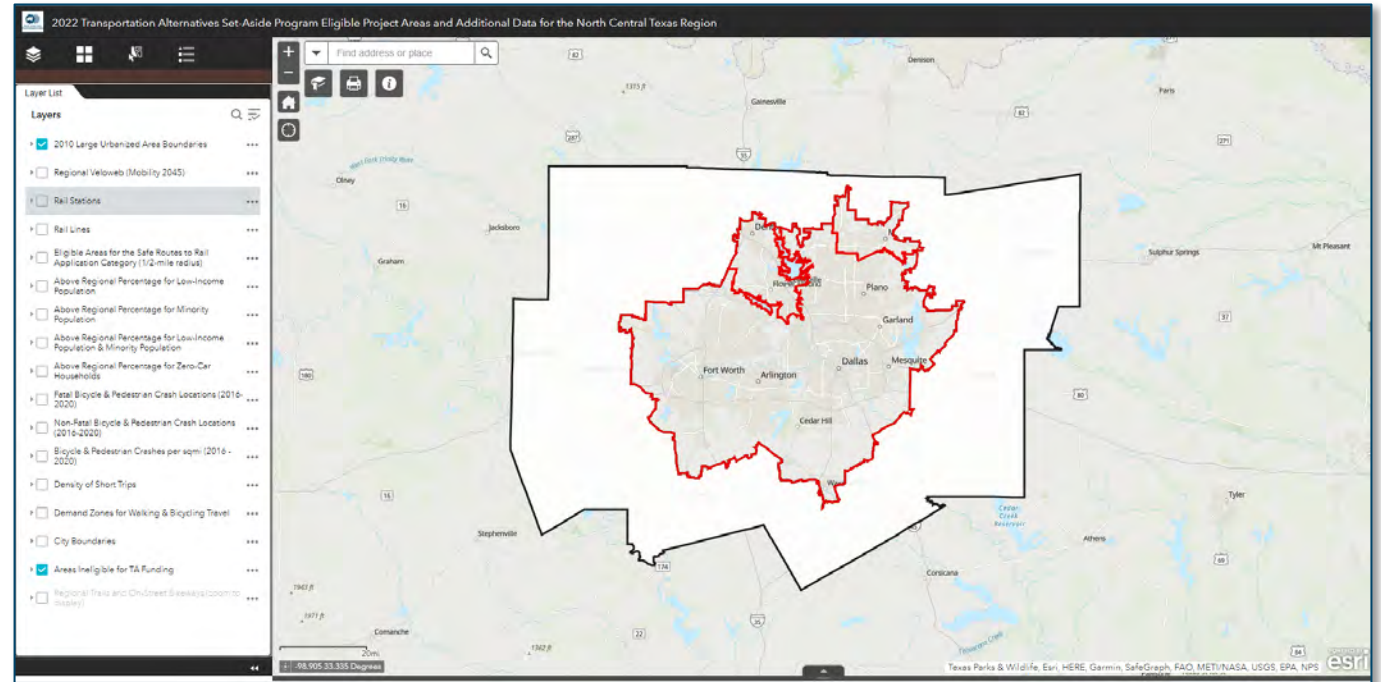
Eligible Project Areas

All proposed projects must be within one of the three urbanized areas (exceeding 200K population)



Interactive Online Map Resource

- Regional Veloweb
- Demand Zones for Walk/Bike Travel
- Rail Stations/Buffers
- Environmental Justice Index Layers
- Density of Short Trips
- Pedestrian/Bicycle Crashes



Displays eligible project area boundaries and relevant data layers involved in the evaluation process.



A family of four is riding bicycles on a paved path in a park. From left to right: a young boy in a pink shirt and grey helmet on a blue bike; a young girl in a green tank top and grey helmet on a pink bike; a man in a light blue shirt on a grey bike; and a woman in a pink tank top on a grey bike. They are all smiling and looking forward. The background is filled with lush green trees and a clear sky. A semi-transparent grey box with white text is overlaid on the middle of the image.

Evaluation and Scoring

Safe Routes to School: Infrastructure Category

Evaluation and Scoring Criteria

Category	Points	Description
Problem Identification & Solution	25	Addresses an identified problem
Planning Support	20	Supported by a SRTS Plan or local planning effort.
Potential to Increase Walking and Bicycling	20	Likely to increase the number of students that walk or bicycle to school
Equity	15	Improves school access and safety for disadvantaged populations
Project Readiness and Other Factors	20	Ability to obligate funds and initiate construction quickly Project has support from the community



Safe Routes to School: Infrastructure Category

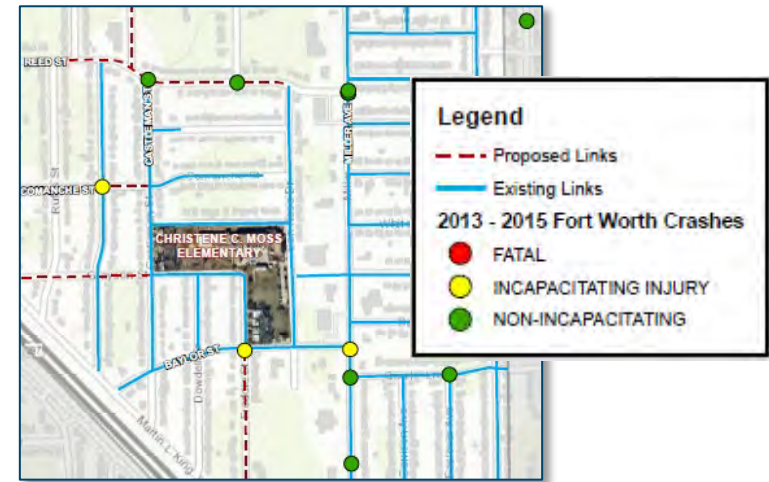
Evaluation and Scoring Criteria

PROBLEM IDENTIFICATION (25 pts)

- Describe the documented problem, and how the project addresses the problem.
- Documented number of students that currently walk or bicycle to/from school.
 - Potential data sources: in-class travel tally or parent survey (templates available on TA CFP webpage), visual observation.



Source: City of Princeton



Source: City of Fort Worth

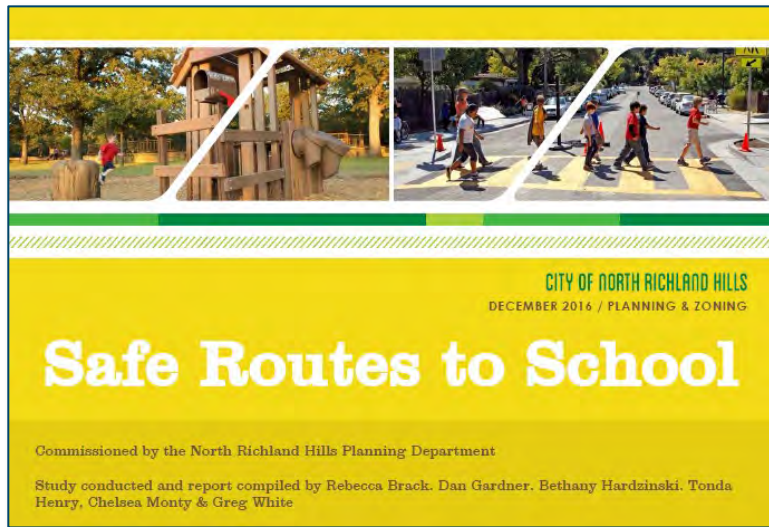


Safe Routes to School: Infrastructure Category

Evaluation and Scoring Criteria

PLANNING SUPPORT (20 pts)

Documentation of a SRTS Plan, safety audit or other planning effort.



Source: City of North Richland Hills



Source: City of Fort Worth



Safe Routes to School: Infrastructure Category

Evaluation and Scoring Criteria

POTENTIAL TO INCREASE WALKING & BICYCLING (20 pts)

- Number of students that live within two miles of the school
- Distance of the project improvements from the school
- Other pedestrian or bicycle generators that will benefit from this project (e.g., public transit facilities, major employers, colleges, libraries, etc.)
- Estimated number that will walk or bicycle after project implementation

EQUITY (15 pts)

- Percent of students that are economically disadvantaged.
(Source: Texas Education Agency School Report Cards – Free/Reduced Lunch Statistics)



Source: City of McKinney



Safe Routes to School: Infrastructure Category

Evaluation and Scoring Criteria

PROJECT READINESS & OTHER FACTORS (20 pts)

- Letter of support from the school district superintendent (required)
- The local municipality and/or the school has demonstrated support for walking and bicycling events such as: Walk to School Day, bicycle rodeos, walk audits, etc.
- A public meeting has been conducted or impacted neighbors have been notified, and there is documented neighborhood support
- Status of engineering/design
- Likelihood that the project will advance to construction within three years
- Innovation
- Benefit versus cost
- Local funding overmatch
- Geographic distribution



Safe Routes to School: Infrastructure Category

- Submit separate application for each school campus or a grouping of schools.
 - Grouping examples: city-wide, district-wide, grouping of schools in close proximity (~.5 mi apart)
- Note: Projects that perform best are grounded in a planning effort, site observations during arrival/dismissal, and/or input from the school community.
 - Thus, projects that are not based on an existing SRTS may not be competitive in the evaluation/scoring.



Safe Routes to School: Education Category

Evaluation and Scoring Criteria

Category	Points	Description
Problem Identification & Program Proposed	35	Addresses an identified problem for educational activities to address
Potential to Increase Walking and Bicycling	30	Likely to increase the number of students that walk or bicycle to school
Equity	15	Improves school access and safety for disadvantaged populations
Project Readiness and Other Factors	20	Ability to obligate funds and initiate activities quickly



Safe Routes to School: Education Category

Evaluation and Scoring Criteria

Example Eligible Activities:

- Creation and/or reproduction of promotional/educational materials, bicycle and pedestrian safety curricula and materials
- Training, including SRTS training workshops that train instructors for bike/ped safety, SRTS education and encouragement activities, SRTS program establishment, etc.
- Modest incentives for SRTS contests, that encourage more walking and bicycling over time, Safety and educational tokens that also advertise the program
- Costs to employ a SRTS Program Manager, for an entire city, county, or some other area-wide division that includes numerous schools
- Costs to hire a consultant to manage a SRTS program



Safe Routes to School: Education Category

Evaluation and Scoring Criteria

PROBLEM IDENTIFICATION & PROGRAM PROPOSED (35 pts)

- Identification of problem or project objective and proposed solutions
- Evidence of the problem or the issue being addressed by the project
- Potential for the proposed project to correct the problem or address the issue
- Number of students that currently walk or bicycle to/from school each day
- Existing campaign, curriculum, or materials to be used



Source: City of Fort Worth



Safe Routes to School: Education Category

Evaluation and Scoring Criteria

POTENTIAL TO INCREASE WALKING & BICYCLING (30 pts)

- Number of students and schools reached
- Number of events or trainings
- Partnership opportunities

EQUITY (15 pts)

- Percent of students that are economically disadvantaged
(Source: Texas Education Agency School Report Cards – Free/Reduced Lunch Statistics)



Source: City of Fort Worth



Safe Routes to School: Education Category

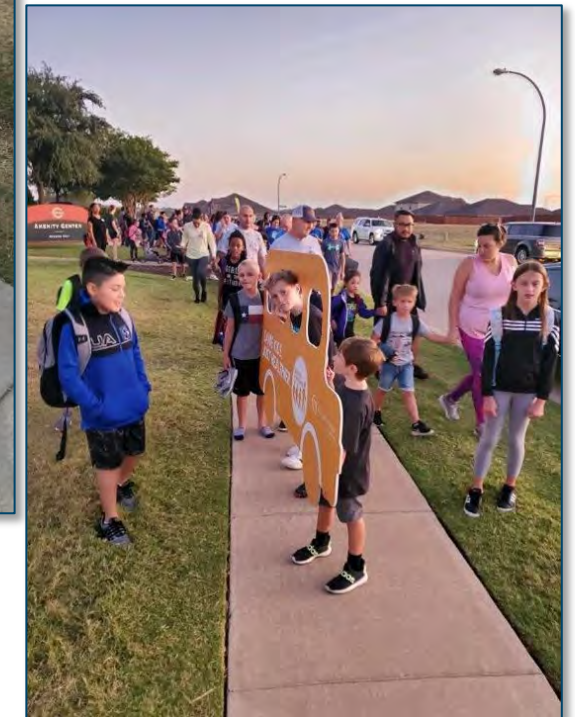
Evaluation and Scoring Criteria

PROJECT READINESS & OTHER FACTORS (20 pts)

- Letter of support from the school district superintendent (required)
- The local municipality and/or the school has demonstrated support for walking and bicycling events such as: Walk to School Day, bicycle rodeos, walk audits, etc.
- Innovation
- Benefit versus cost
- Geographic distribution



Source: City of Fort Worth



Safe Routes to School: Education Category

- Education Activities can be submitted as a stand-alone project or as a part of an Infrastructure project.
- A city may include all elementary and middle schools within its jurisdiction.
- An ISD may include all applicable campuses within multiple municipalities.
- Preference will be given to programs that use existing materials developed by NCTCOG, (e.g. *Look Out Texans*) or from TxDOT (e.g. *DriveKind RideKind*) or other established safety messaging.



Safe Routes to School: Education Category

Supplemental Sheet Guidance:

- Implementation of Education Activities:
 - Person who will implement and oversee the education program (Q9)
 - Percentage of activities conducted in-house or performed by a third party (Q10)
- Timing/Schedule (Q11)
 - Expected duration of educational activities
 - General schedule outline/description of timeframes for activities
 - **Education-Only SRTS projects do not need to complete Attachment (E): Project Schedule**



Safe Routes to Rail Category

Evaluation and Scoring Criteria

Category	Points	Description
Problem Identification & Solution	20	Addresses an identified problem
Planning Support	20	Supported by a Routes to Rail Station Study or other planning effort
Potential to Increase Walking and Bicycling	10	Increase the number of people that walk or bicycle to the existing rail station
Transit Accessibility	10	Improves connections and access to the existing rail station
Equity	15	Improves safety and access to rail station for disadvantaged populations
Project Readiness and Other Factors	25	Ability to obligate funds and initiate construction quickly. Project has support from the community.

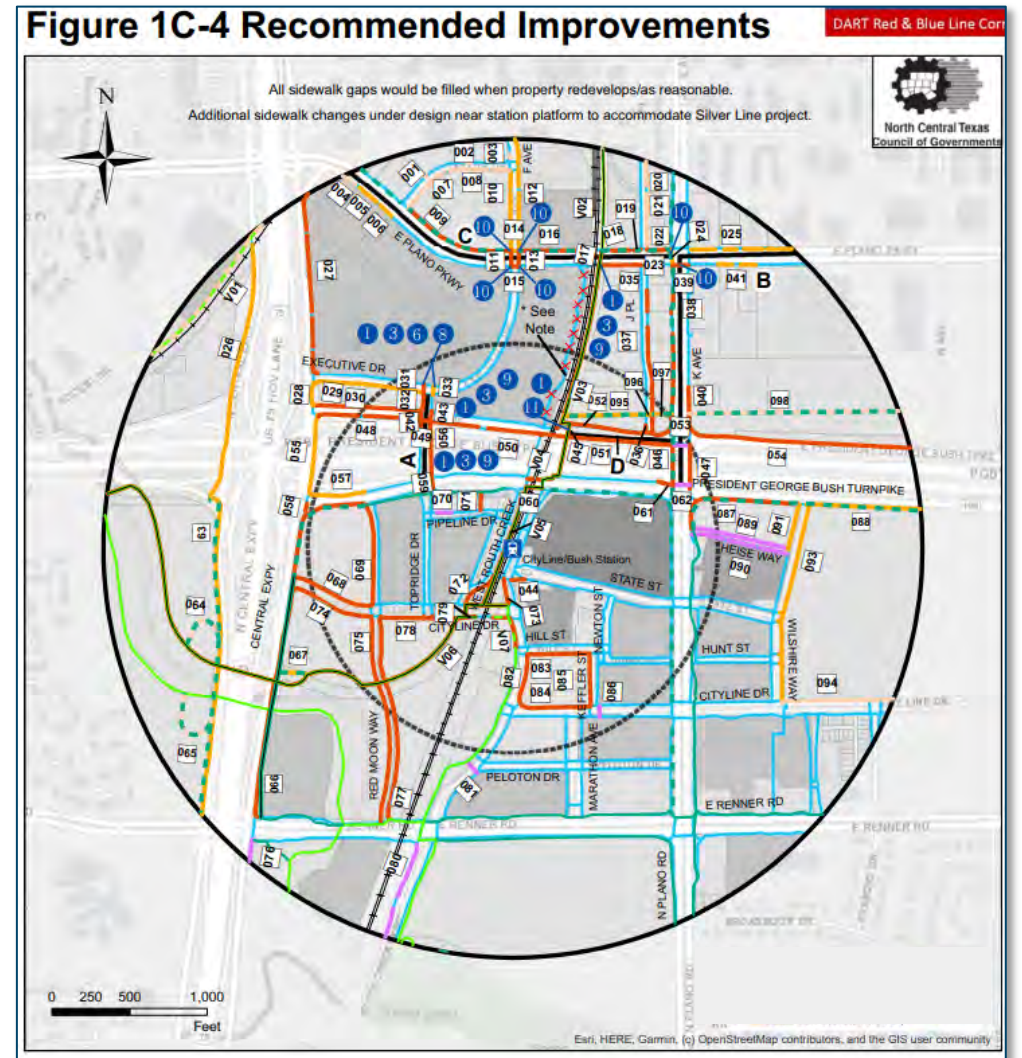


Safe Routes to Rail Category

Evaluation and Scoring Criteria

PROBLEM IDENTIFICATION (20 pts)

- Identification of problem or project objective
- Evidence the problem or the issue will be addressed by the project
- Potential for the proposed improvements to correct the problem or address the issue
- Improves safety in documented high crash areas



Safe Routes to Rail Category

Evaluation and Scoring Criteria

PLANNING SUPPORT (20 pts)

The project is identified as a need from recommendations resulting from a plan.



Safe Routes to Rail Category

Evaluation and Scoring Criteria

POTENTIAL TO INCREASE WALKING & BICYCLING (10 pts)

- Number of potential transit riders that would benefit from the proposed improvements
- Number of pedestrian or bicycle generators that will be connected by the project (e.g., public transit facilities, major employers, colleges, libraries, schools etc.)
- Distance of the project improvements from the existing rail station
- The estimated increased number of pedestrians and bicyclists after project implementation



Safe Routes to Rail Category

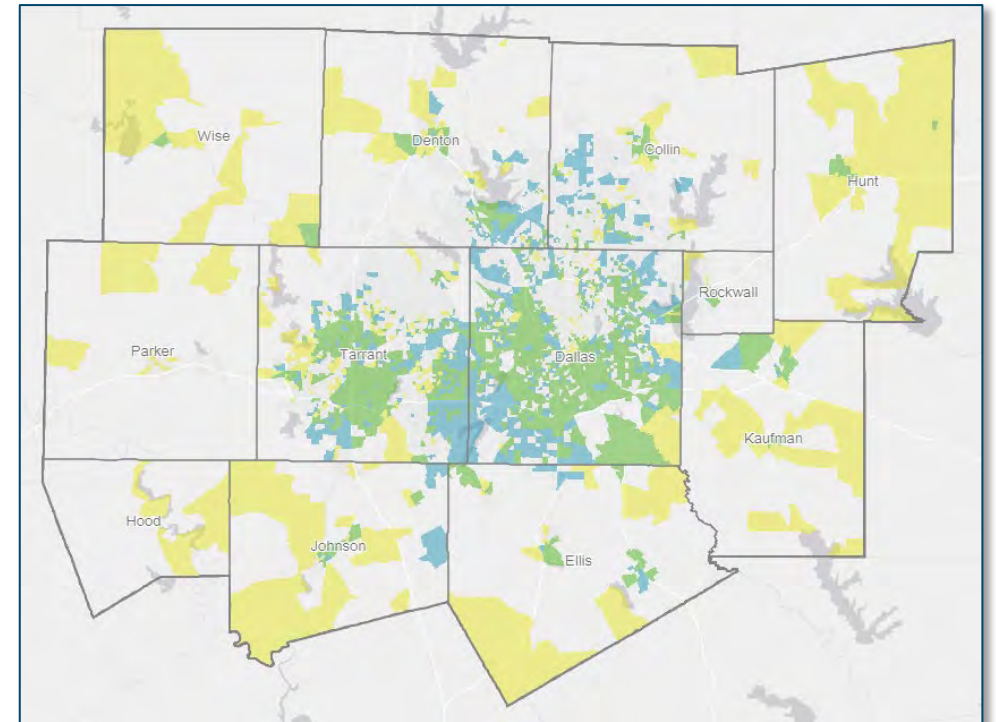
Evaluation and Scoring Criteria

TRANSIT ACCESSIBILITY (10 pts)

- Project closes a pedestrian/bike network gap, improve access, and shortens distances to access the existing rail station.

EQUITY (15 pts)

- The census tracts around the existing rail station include populations with higher than the regional average for Minority Population and Population Under the Poverty Line



NCTCOG EJI: Above Regional Average for Minority Population and/or Population Under the Poverty Line



Safe Routes to Rail Category

Evaluation and Scoring Criteria

PROJECT READINESS & OTHER FACTORS (25 pts)

- Status of engineering/design
- Likelihood that the project will advance to construction within three years
- Local funding overmatch
- Innovation
- Benefit versus cost
- Support from the community and documentation of meetings to solicit feedback
- Geographic distribution



Safety & Technology Category

Evaluation and Scoring Criteria

Category	Points	Description
Problem Identification	25	Addresses an identified problem using primarily a safety treatment or technology solution
Planning Study	20	Supported by a traffic safety or local or regional safety plan
Potential to Increase Walking and Bicycling	15	Likely to increase the number of people that walk or bicycle
Equity	15	Improves safety and access to nonmotorized transportation for disadvantaged populations
Project Readiness and Other Factors	25	Ability to obligate funds and initiate construction quickly. Project has support from the community.

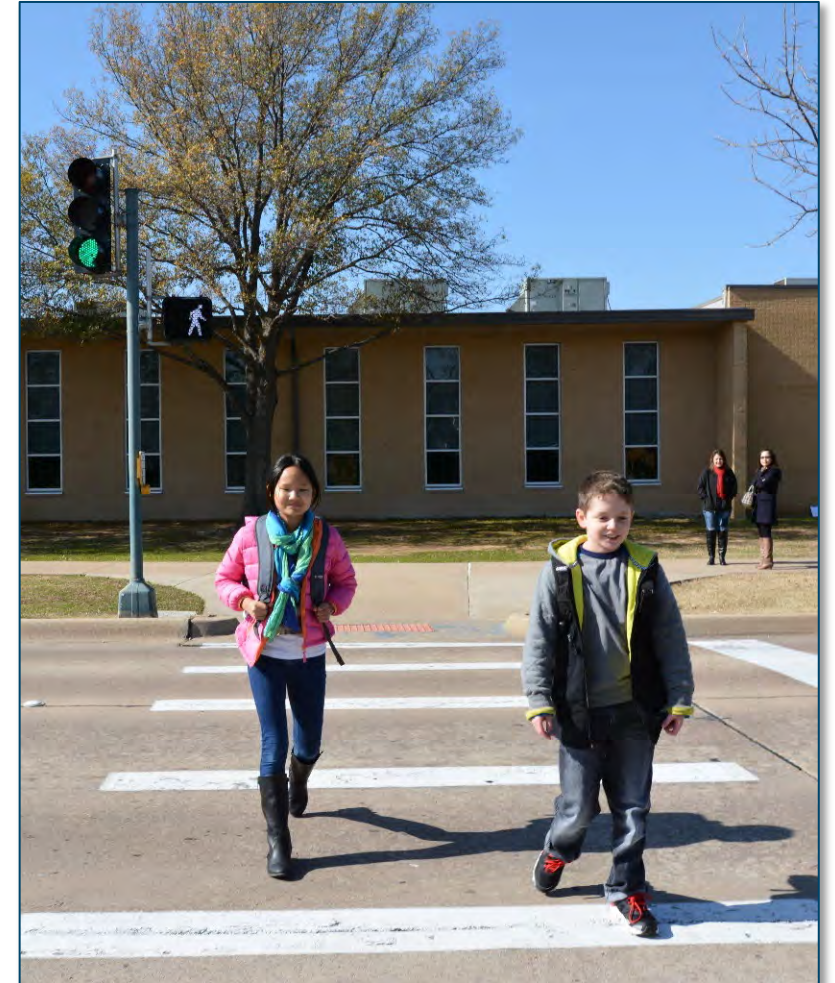


Safety & Technology Category

Evaluation and Scoring Criteria

PROBLEM IDENTIFICATION (20 pts)

- Addresses an identified problem using primarily a safety treatment or technology solution
- Evidence of the problem or the issue being addressed by the project
- Potential for the proposed improvement(s) to correct the problem or address the issue using primarily a safety treatment or technology solution



Source: NCTCOG

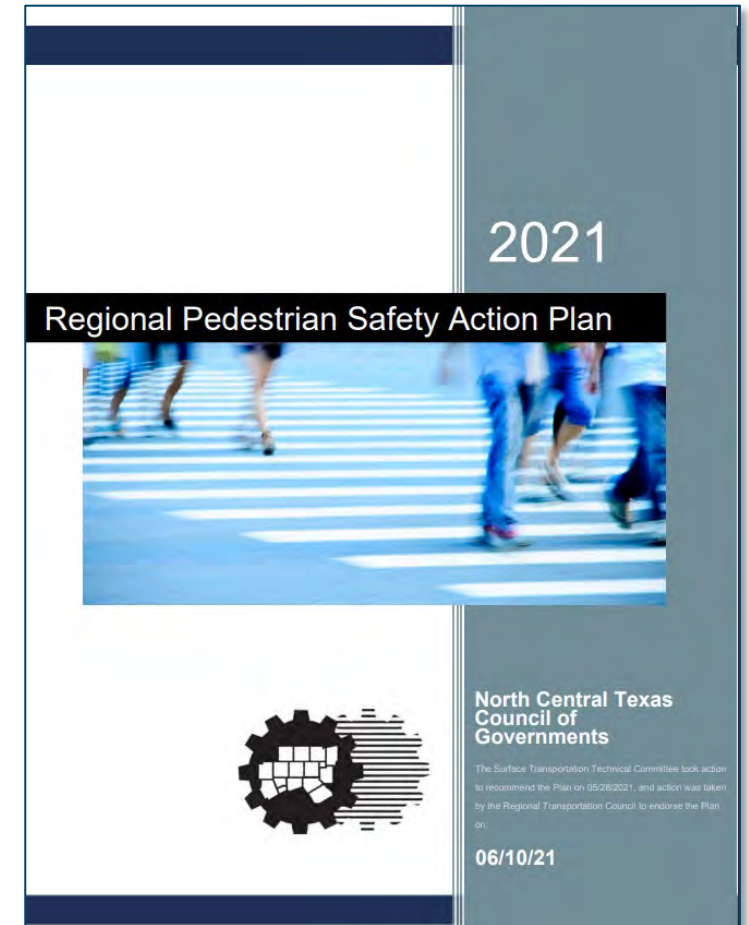


Safety & Technology Category

Evaluation and Scoring Criteria

PLANNING STUDY (20 pts)

- The area is identified in the NCTCOG Regional Pedestrian Safety Action Plan
- The project is identified based on recommendations from a local safety/existing conditions audit in a safety plan, vision zero plan, roadway safety audit, signal warrant study, or related traffic safety study.



Safety & Technology Category

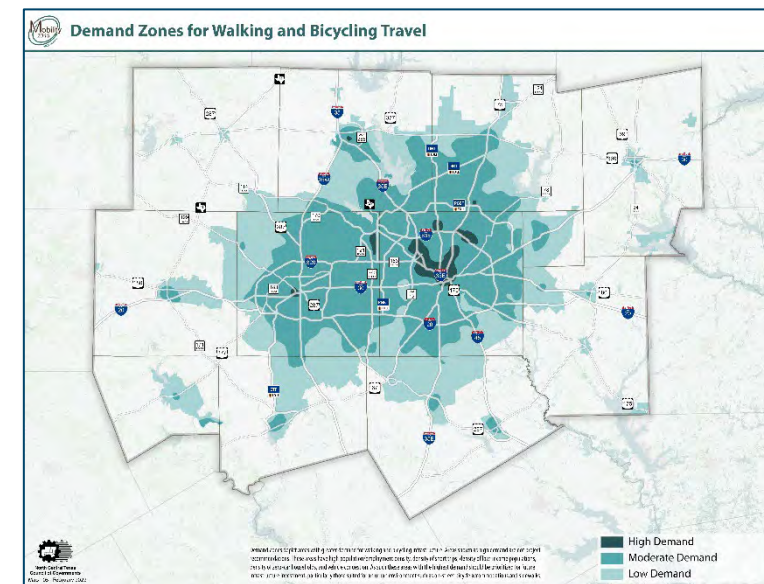
Evaluation and Scoring Criteria

POTENTIAL TO INCREASE WALKING & BICYCLING (15 pts)

- The area is located within the high or moderate demand zone for walking and biking travel as reflected in the Mobility 2045 Plan
- Pedestrian or bicycle generators that will benefit from the project (e.g., public transit facilities, major employers, colleges, libraries, schools etc.)

EQUITY (15 pts)

- The census tracts around the project area include populations with higher than the regional average for Minority Population and Population Under the Poverty Line



Safety & Technology Category

Evaluation and Scoring Criteria

PROJECT READINESS & OTHER FACTORS (25 pts)

- Status of engineering/design
- Likelihood that the project will advance to construction within three years
- Local funding overmatch
- Innovation
- Benefit versus cost
- Support from the community and documentation of meetings to solicit feedback
- Geographic distribution



Source: NCTCOG



Active Transportation Category

Evaluation and Scoring Criteria

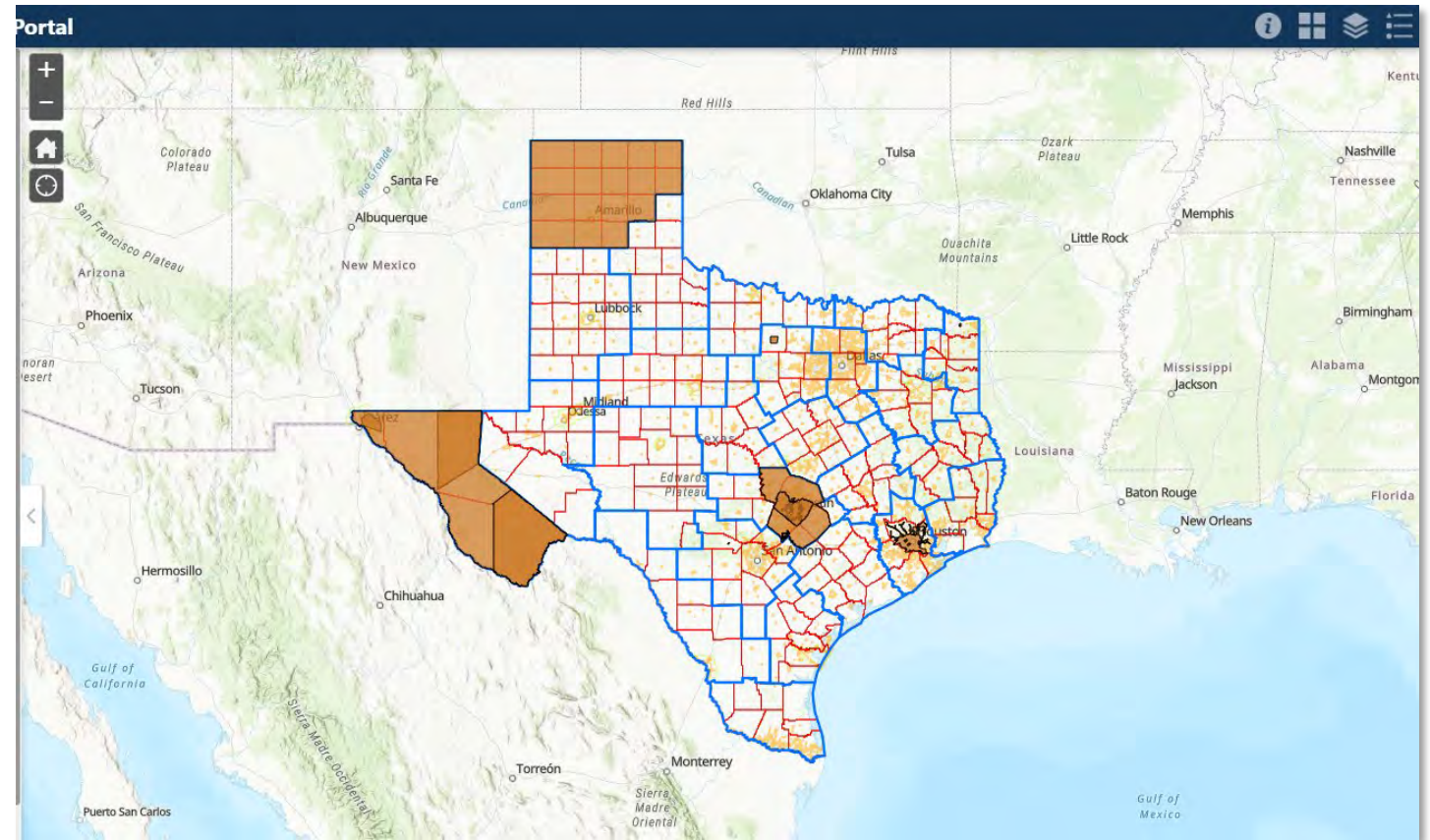
Category	Points	Description
Regional Network Connectivity	20	Improves connectivity between cities and counties.
Access to Major Destinations	15	Improves connections and access to major destinations.
Safety and Comfort	15	Improves safety and provides facilities for pedestrians and bicyclists suitable for all ages and abilities.
Congestion Reduction	15	Provides travel options in areas with greater opportunity for walking and bicycling.
Equity	10	Improves access to disadvantaged populations and underserved communities.
Reducing Barriers	5	Provides safe crossing of existing travel obstacles.
Project Readiness and Other Factors	20	Ability to obligate funds and initiate construction quickly.



Implementing Adopted Plans

Bicycle and/or pedestrian projects identified in locally adopted plans are strongly encouraged to be uploaded to the Plan Submission Portal by applicants.

Texas Active Transportation Plan Inventory

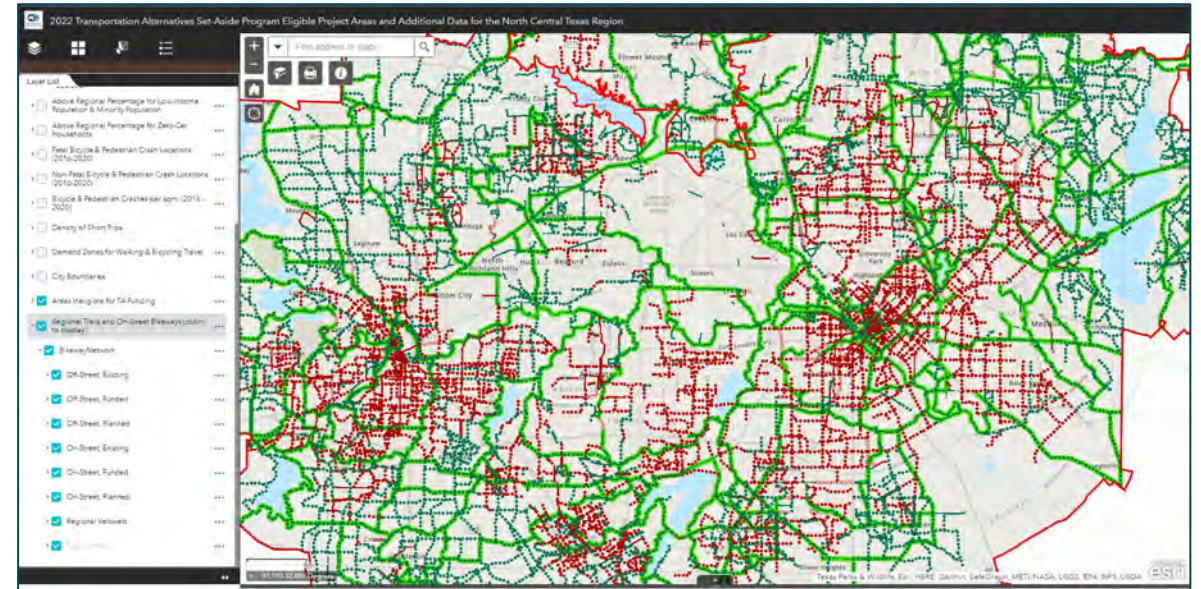


Active Transportation Category

Evaluation and Scoring Criteria

REGIONAL NETWORK CONNECTIVITY (20 pts)

- Regional Veloweb Alignment or Connections to the Veloweb
- Pedestrian Connections to Major Destinations
- Community Path or On-Street Bikeway in Mobility 2045



Active Transportation Category

Evaluation and Scoring Criteria

ACCESS TO MAJOR DESTINATIONS (15 pts)

- Connections to Employment centers, education institutions, transit stations, etc.
- Closes gaps or extends the network (considers proximity)
- Number of connections



Active Transportation Category

Evaluation and Scoring Criteria

SAFETY AND COMFORT (15 pts)

Provide documentation of the issues and the recommended safety countermeasures.

- Data source, safety report/study, benefit vs. cost
- The project realistically addresses the safety issues
- Low stress/high comfort facility design



Source: NCTCOG



Active Transportation Category

Evaluation and Scoring Criteria

CONGESTION REDUCTION (15 pts)

- Located in an area with high density of trips by motor vehicles
- Project provides a feasible alternative to motor vehicle trips in high congestion areas
- Forecasted user volumes



Source: Microsoft

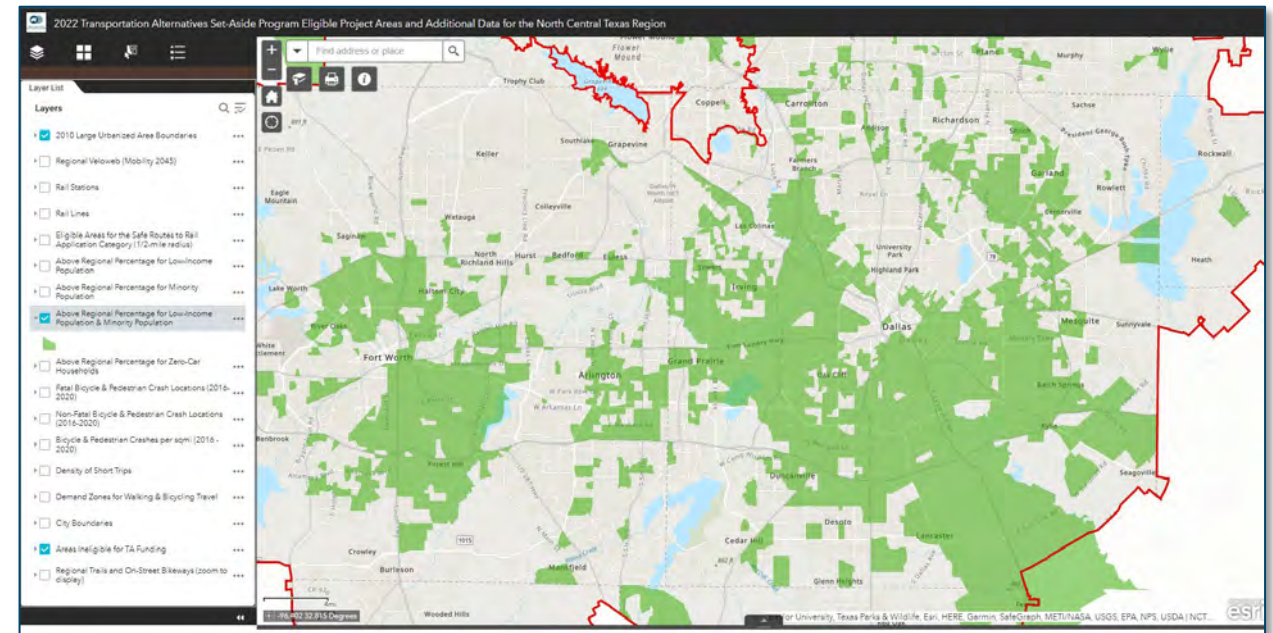


Active Transportation Category

Evaluation and Scoring Criteria

EQUITY (10 pts)

- Project located in an area identified in the NCTCOG Environmental Justice Index (EJI) data
- Project located in an area with zero car households above the regional average



Active Transportation Category

Evaluation and Scoring Criteria

REDUCING BARRIERS (5 pts)

- Project improves crossings of barriers such as major roadway, waterway, railroad, etc.
- Grade separated or at-grade crossings



Active Transportation Category

Evaluation and Scoring Criteria

PROJECT READINESS & OTHER FACTORS (20 pts)

- Engineering/design – percent complete
- Innovative technology and treatments
- Consideration of utilities impacting the project
- Benefit vs. cost
- Level of stakeholder/community support
- Local funding overmatch
- Geographic distribution



Source: NCTCOG





Application Overview

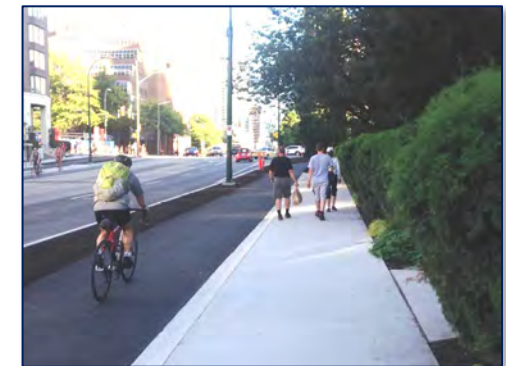
Description of Project

- Purpose of the Project
- Existing Conditions
- Supplemental Materials
 - Pictures, diagrams, maps, etc.



Project Elements

- Identify the type of facilities to be constructed (sidewalks, crossings, path/trail, bike lanes, signage, etc.).
- Identify any innovative treatments and technology to be included in the project design.
- Project elements should be consistent with the itemized construction cost worksheet (budget).



Project Elements (cont.)

The project includes the following facilities: (Select all that apply)

- Sidewalks ___% New Construction ___ Width (ft.) of sidewalks
- Crosswalks Curb Ramps
- On-Street Bicycle Facilities
 - Bicycle Lane
 - Shared Lane Markings
 - Separated Bicycle Lane
 - Bicycle Boxes
 - Colored Pavement for Bicycle Lanes
- Shared-Use Path/Trail ___ Width (ft.) (minimum 10 – 14 ft.)
- Pedestrian and Bicycle Signalization/Traffic Control
- Bicycle Parking/Racks/Amenities
- Pedestrian Amenities/Streetscape (lighting, landscaping, etc.)
- Transit Stops and Amenities Traffic Calming
- Signage Bicycle/Pedestrian Traffic Count Equipment
- Other _____

Identify the percentage that is new vs. repair/maintenance

Must comply with AASHTO

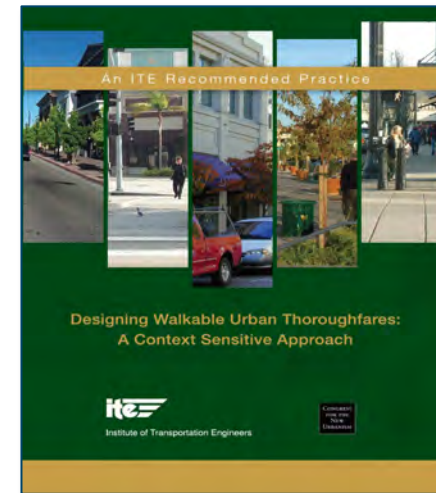
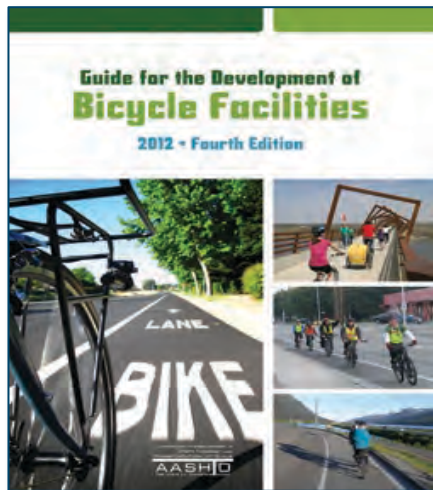
Less than 10-ft. width is considered an enhanced sidewalk

Note: All elements selected in this section must be included in the Project Budget.



Project Elements (cont.)

Consistent with relevant guides: FHWA, AASHTO, NACTO, etc.

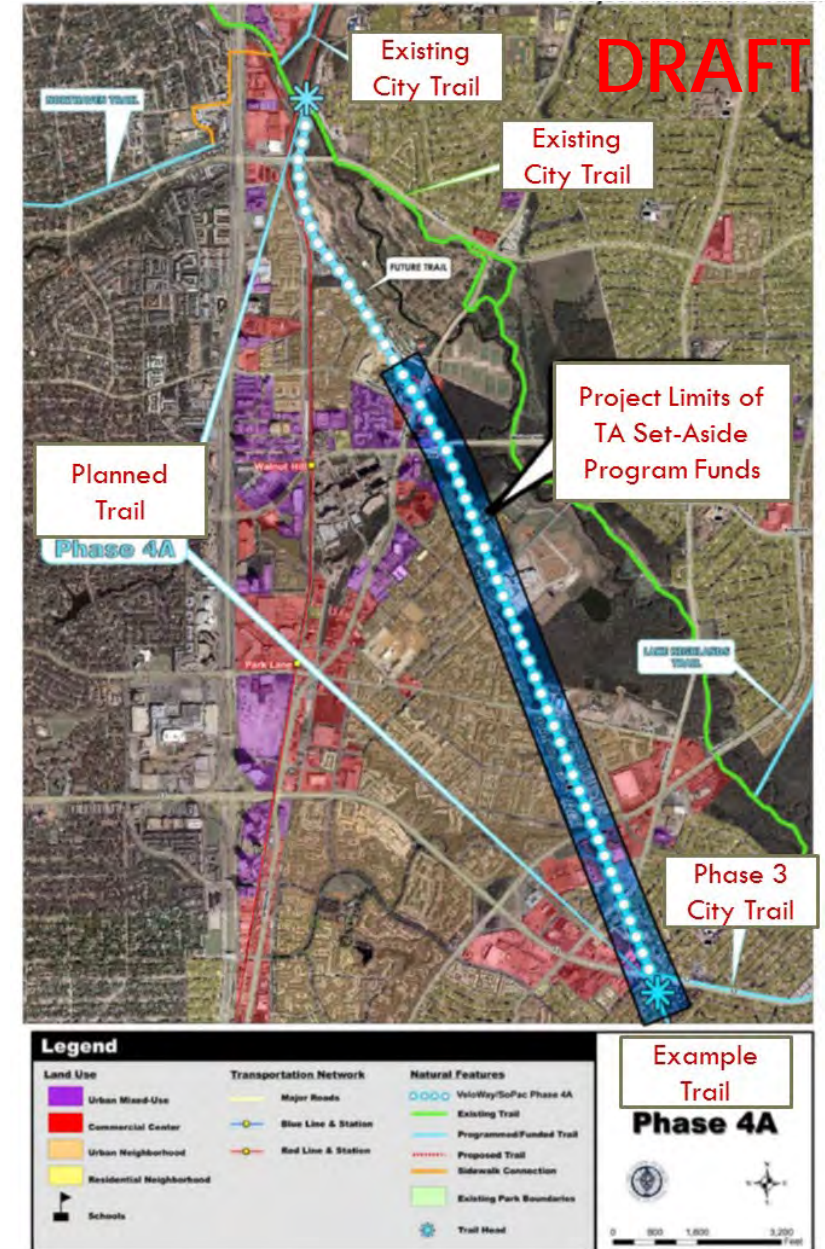


Note: Per AASHTO a shared-use path (trail) is a **minimum 10-14 ft. width**

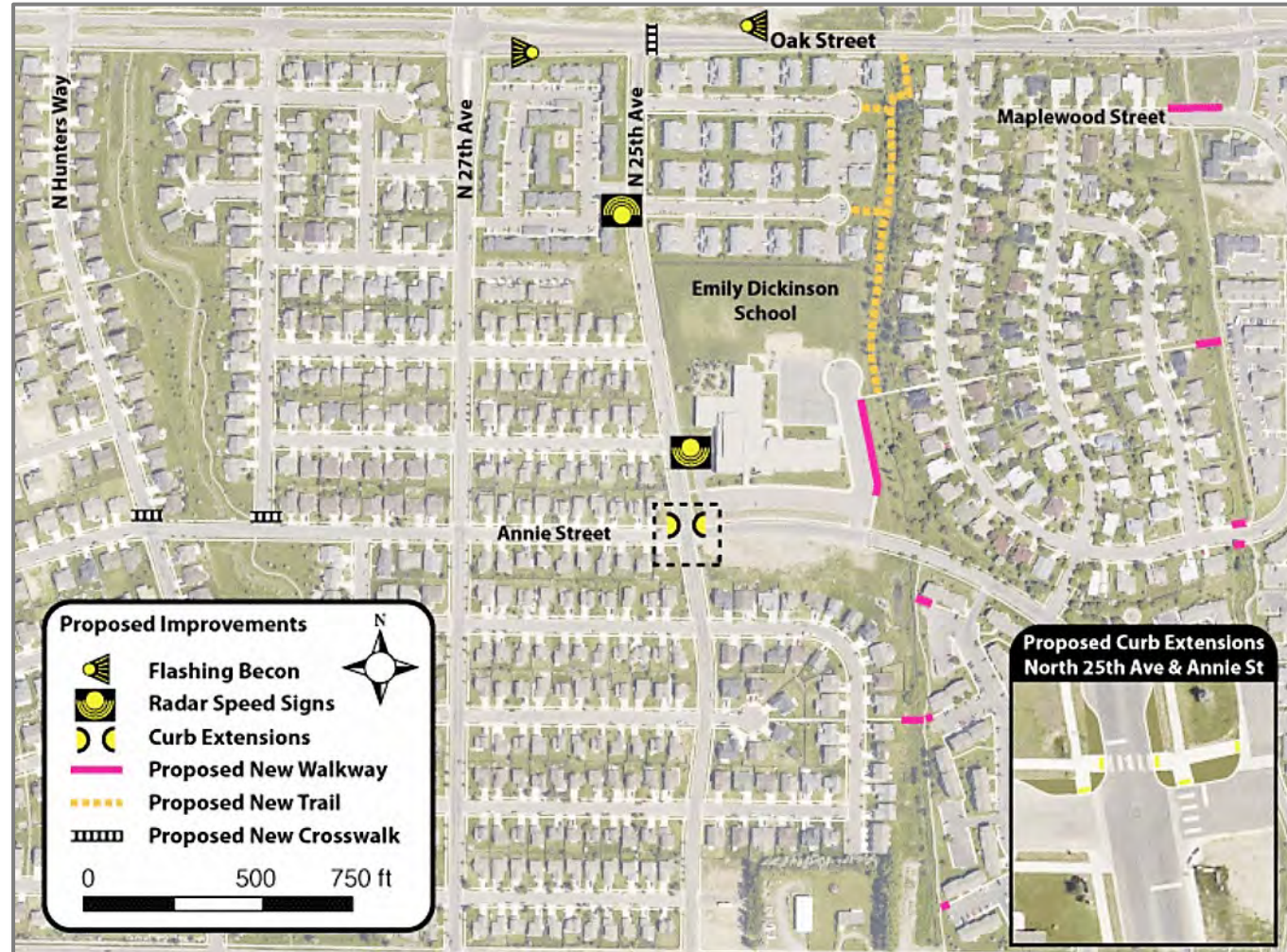


Project Location

- Map of project location, alignment or boundary
- Clearly identify project segments/phases
- Clearly identify location and length of various facility types (e.g., trail, on-street, sidewalk)
- Clearly identify other existing and planned facilities in the area, key land uses, and other connecting destinations



Project Location (cont.)



Submittal and Attachments

- Complete the Checklist.
- Submit hard copies and electronic copies.
- Additional information, including resolutions, cannot be submitted after the **September 9, 2022, 5pm deadline (per RTC Policy).**

There will be no extensions.

Project Submittal and Attachment Checklist

Check all that apply and are included in the Nomination package (both hard copy and CD, USB drive or SD card). Items noted as **[Required]** must be checked and included with the application, or the application will be **deemed incomplete**. **Label each attachment according to the list below.**

- One (1) signed original Application (including attachments) **[Required]**
- Two (2) hard copies of the signed Application (including attachments) **[Required]**
- Attachment (A) Project Information Maps, Plans, and Studies [Required]**
 - Project Location Map (highlight or show existing and planned linkages to the school(s), and the school attendance boundary)
 - Path of Travel Map Identifying all Existing Major Intersections and Crosswalks from the Project Location to the School (such a map may already exist in a SRTS plan)
 - Project Site Plan or Other Project Area Maps
 - Materials such as pictures, exhibits, diagrams, etc. to supplement the project description and explain existing conditions and proposed improvements (if applicable)
 - ADA Transition Plan for Transportation (if applicable)
- Attachment (B) Safe Routes to School Plan (if applicable)**
 - Relevant section and pages/maps of the Plan _____
- Attachment (C) Evidence of Public Involvement and Support (if applicable)**
- Attachment (D) Easement / Access Agreement (if applicable)**
- Attachment (E) Railroad Right of Entry Letter/Agreement (if applicable)**
- Attachment (F) Environmental Checklist and Supporting Documents [Required]**
- Attachment (G) TxDOT District Engineer Letter of Consent (if applicable)**
- Attachment (H) Project Budget Summary [Required]**
 - Printed Project Budget Summary and Itemized Cost sheets attached to each hard copy submittal
 - One (1) electronic Microsoft Excel file of the Project Budget Summary on the Nomination CD, USB drive or SD card
- Attachment (I) Certification of Local Match and Funding Commitment (resolution or letter) [Required]**
- Attachment (J) Support by Supporting Entity (resolution/MOU or letter) [Required]**
- Electronic copies of all files on CD, USB drive or SD card: [Required]**
 - PDF of the Application Form and Project Budget Summary with Itemized Cost Sheets
 - PDF of all attachments in labeled according to the submittal checklist
 - Microsoft Excel Project Budget Summary and Itemized Cost sheets

Project information GIS files for the project location/area are strongly encouraged to ensure accuracy of project location and scoring. For Nominating Entity organizations in which GIS capabilities are not available and technical assistance is needed, please contact Daniel Snyder at 817-608-2394 or dsnyder@nctcoq.org

- GIS files.** GIS shapefiles for the project location/area are included in a folder labeled as "GIS" on the Nomination CD, USB drive or SD card.



Resources

nctcog.org/TAP

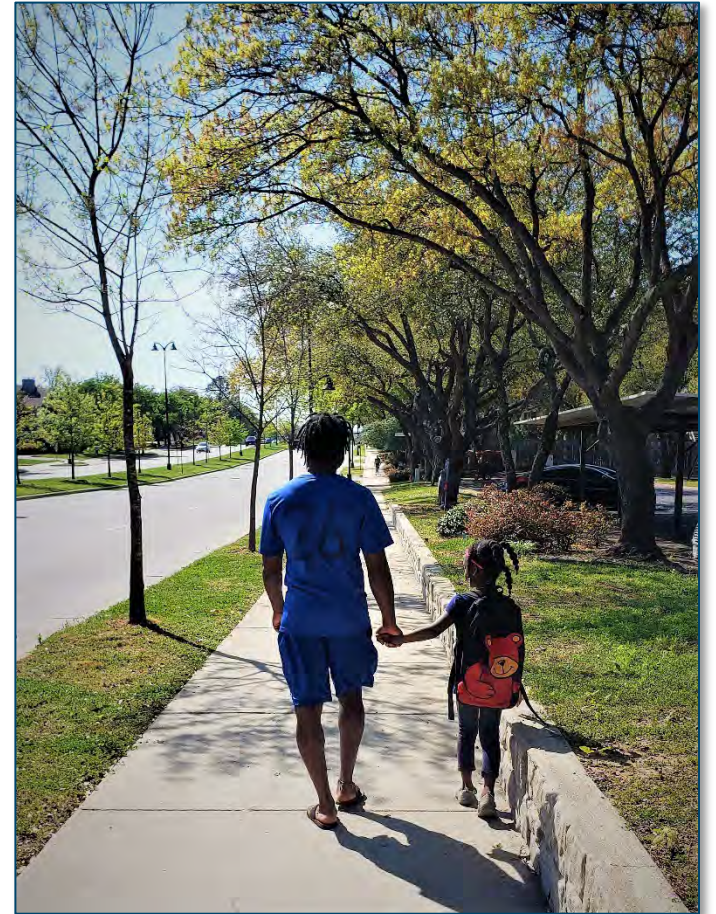
The screenshot shows the website for the North Central Texas Council of Governments. The header includes the logo, the name "North Central Texas Council of Governments", and navigation links for "About Us / Contact Us", "Select Language", and "Logout". Below the header is a navigation menu with categories: AGENCY ADMINISTRATION, AGING SERVICES, ECONOMIC DEVELOPMENT, EMERGENCY PREPAREDNESS, ENVIRONMENT & DEVELOPMENT, EXECUTIVE DIRECTOR, NCT 9-1-1, PUBLIC SAFETY, REGIONAL DATA, WORKFORCE SOLUTIONS, and TRANSPORTATION. A search bar is located below the navigation menu. The main content area features a breadcrumb trail: Home > Transportation > Regional Planning & Projects > Bicycle-Pedestrian > Funding Opportunities > 2022 Transportation Alternatives Set-Aside Program Call for Projects (North Central Texas Region). The title of the page is "2022 Transportation Alternatives Set-Aside Program Call for Projects (North Central Texas Region)". The text describes the program, stating that it will open on July 18, 2022, for the urbanized area portion of the 12-county North Central Texas Region. It lists eligible project types, including on-and off-road pedestrian and bicycle facilities, multi-modal connections to existing rail stations, and pedestrian and bicycle infrastructure associated with Safe Routes to School (SRTS) projects. The call for projects will close on Friday, September 9, 2022 at 5 pm. It also mentions that all paper and electronic copies of an application must be received by the deadline. An "Application Workshop (for the North Central Texas Region)" is scheduled for Tuesday, July 19, 2022 from 2:00 - 4:00 pm via Microsoft Teams. The workshop will review application submittal requirements, eligible project categories, eligible entities to receive funding, evaluation and scoring priorities, and questions related to the application process. Contact information for Barb Walsh is provided: Email Barb Walsh at bwalsh@nctcog.org to request the Teams meeting link. A sidebar on the right contains a list of navigation items: Drafts (Not Published), Regional Planning & Projects, Congestion Management, Maps, Models & Data, Quality of Life, and Funding & Business.



General Tips – Project Development

Is the project design suitable for “All Ages and Abilities”?

- Does the project implement FHWA-recommended safety countermeasures?
- Is the project design appropriate for the context in which it is located?
- Does the project implement a low stress/high level of comfort facility?



General Tips – Project Development (cont.)

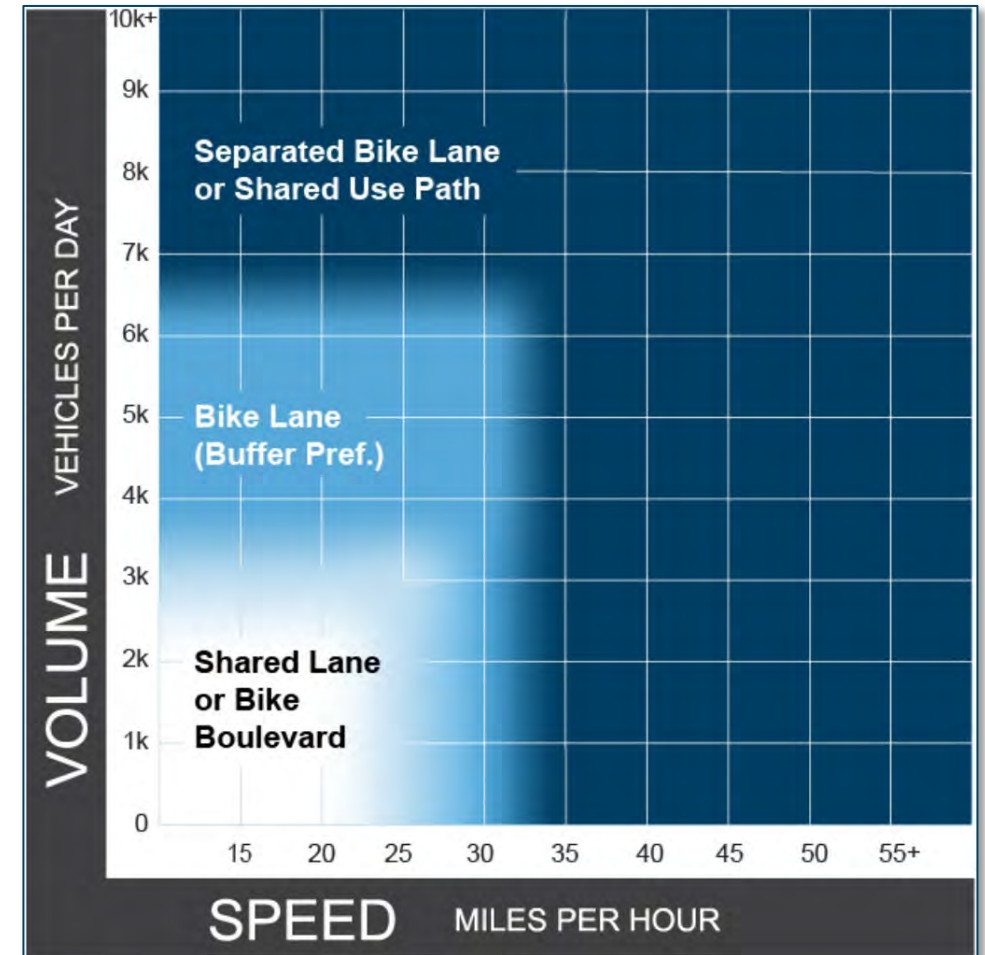
A “low stress/high comfort level” facility

- A wide sidewalk for pedestrians:
 - minimum 5-10 ft. width
- Off-street shared-use path for pedestrians and bicyclists:
 - minimum 10-14 ft. width



Level of Comfort for On-Street Bikeways

Separated/protected bike lanes or on-street bike lanes with a suitable design for bicyclists based on the context of the project location (e.g., projected traffic volumes, speeds, adjoining land uses, etc.)



Source: TxDOT





Project Implementation

Project Schedule Template

Transportation Alternatives Set-Aside Project Schedule

PROJECT SPONSOR:
 PROJECT NAME:

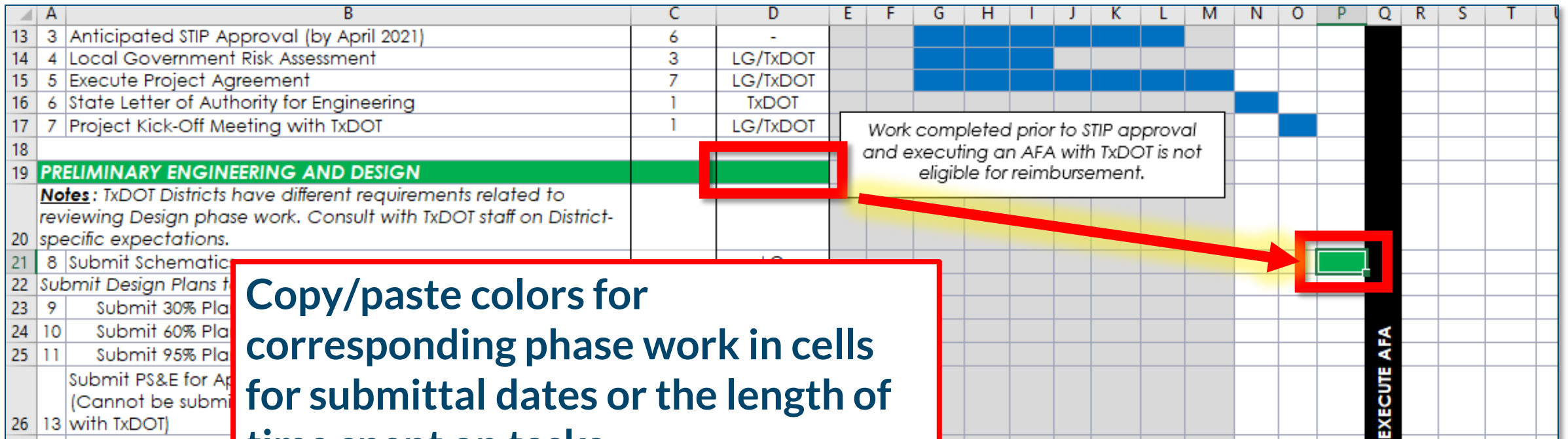
DIRECTIONS: For TA Set-Aside projects involving construction, enter the number of months in the "Estimated Time" column for the below project development tasks or milestones and color the cells in the project schedule timeline. Add any relevant notes in the text boxes below the schedule to provide background on work completed to date (such as design), or to provide context explaining any unique circumstances impacting the estimated length of time for a particular task or phase.

#	TASK / MILESTONE	Estimated Time (Months)	Responsible Entity	FY 2023								FY 2024								FY 2025								FY 2026																							
				DEC	JAN	FEB	MAR	APR	MAY	JUN	JUL	AUG	SEP	OCT	NOV	DEC	JAN	FEB	MAR	APR	MAY	JUN	JUL	AUG	SEP	OCT	NOV	DEC	JAN	FEB	MAR	APR	MAY	JUN	JUL	AUG															
PROJECT INITIATION				Notes: Local Governments (LG) are responsible for submitting the TIP modification to NCTCOG and contacting TxDOT to execute an agreement.																																															
1	Project Selection (Approval by RTC)	N/A	RTC	Work completed prior to STIP approval and execution of an AFA with TxDOT is not eligible for reimbursement.																																															
2	Deadline to Add Project to NCTCOG TIP (January 27, 2023)	1	LG	DEC	JAN	FEB	MAR	APR	MAY	JUN	JUL	AUG	SEP	OCT	NOV	DEC	JAN	FEB	MAR	APR	MAY	JUN	JUL	AUG	SEP	OCT	NOV	DEC	JAN	FEB	MAR	APR	MAY	JUN	JUL	AUG	SEP	OCT	NOV	DEC	JAN	FEB	MAR	APR	MAY	JUN	JUL	AUG			
3	Anticipated STIP Approval (by July 2023)	6	-	DEC	JAN	FEB	MAR	APR	MAY	JUN	JUL	AUG	SEP	OCT	NOV	DEC	JAN	FEB	MAR	APR	MAY	JUN	JUL	AUG	SEP	OCT	NOV	DEC	JAN	FEB	MAR	APR	MAY	JUN	JUL	AUG	SEP	OCT	NOV	DEC	JAN	FEB	MAR	APR	MAY	JUN	JUL	AUG			
4	Local Government Risk Assessment (Completed after the TIP is approved in July 2023)	3	LG/TxDOT	DEC	JAN	FEB	MAR	APR	MAY	JUN	JUL	AUG	SEP	OCT	NOV	DEC	JAN	FEB	MAR	APR	MAY	JUN	JUL	AUG	SEP	OCT	NOV	DEC	JAN	FEB	MAR	APR	MAY	JUN	JUL	AUG	SEP	OCT	NOV	DEC	JAN	FEB	MAR	APR	MAY	JUN	JUL	AUG			
5	Project Kick-Off Meeting with TxDOT	1	LG/TxDOT	DEC	JAN	FEB	MAR	APR	MAY	JUN	JUL	AUG	SEP	OCT	NOV	DEC	JAN	FEB	MAR	APR	MAY	JUN	JUL	AUG	SEP	OCT	NOV	DEC	JAN	FEB	MAR	APR	MAY	JUN	JUL	AUG	SEP	OCT	NOV	DEC	JAN	FEB	MAR	APR	MAY	JUN	JUL	AUG			
6	Execute Project Agreement	7	LG/TxDOT	DEC	JAN	FEB	MAR	APR	MAY	JUN	JUL	AUG	SEP	OCT	NOV	DEC	JAN	FEB	MAR	APR	MAY	JUN	JUL	AUG	SEP	OCT	NOV	DEC	JAN	FEB	MAR	APR	MAY	JUN	JUL	AUG	SEP	OCT	NOV	DEC	JAN	FEB	MAR	APR	MAY	JUN	JUL	AUG			
PRELIMINARY ENGINEERING AND DESIGN				Notes: TxDOT Districts have different requirements related to reviewing design phase work. Consult with TxDOT staff on District-specific expectations.																																															
7	Consultant Selection Process (if applicable)		LG	DEC	JAN	FEB	MAR	APR	MAY	JUN	JUL	AUG	SEP	OCT	NOV	DEC	JAN	FEB	MAR	APR	MAY	JUN	JUL	AUG	SEP	OCT	NOV	DEC	JAN	FEB	MAR	APR	MAY	JUN	JUL	AUG	SEP	OCT	NOV	DEC	JAN	FEB	MAR	APR	MAY	JUN	JUL	AUG			
8	Submit Schematics (if applicable)		LG	DEC	JAN	FEB	MAR	APR	MAY	JUN	JUL	AUG	SEP	OCT	NOV	DEC	JAN	FEB	MAR	APR	MAY	JUN	JUL	AUG	SEP	OCT	NOV	DEC	JAN	FEB	MAR	APR	MAY	JUN	JUL	AUG	SEP	OCT	NOV	DEC	JAN	FEB	MAR	APR	MAY	JUN	JUL	AUG			
9	Submit 30% Plans for Review		LG	DEC	JAN	FEB	MAR	APR	MAY	JUN	JUL	AUG	SEP	OCT	NOV	DEC	JAN	FEB	MAR	APR	MAY	JUN	JUL	AUG	SEP	OCT	NOV	DEC	JAN	FEB	MAR	APR	MAY	JUN	JUL	AUG	SEP	OCT	NOV	DEC	JAN	FEB	MAR	APR	MAY	JUN	JUL	AUG			
10	TxDOT Review of 30% Plans	1	TxDOT	DEC	JAN	FEB	MAR	APR	MAY	JUN	JUL	AUG	SEP	OCT	NOV	DEC	JAN	FEB	MAR	APR	MAY	JUN	JUL	AUG	SEP	OCT	NOV	DEC	JAN	FEB	MAR	APR	MAY	JUN	JUL	AUG	SEP	OCT	NOV	DEC	JAN	FEB	MAR	APR	MAY	JUN	JUL	AUG			
11	Submit 60% Plans for Review		LG	DEC	JAN	FEB	MAR	APR	MAY	JUN	JUL	AUG	SEP	OCT	NOV	DEC	JAN	FEB	MAR	APR	MAY	JUN	JUL	AUG	SEP	OCT	NOV	DEC	JAN	FEB	MAR	APR	MAY	JUN	JUL	AUG	SEP	OCT	NOV	DEC	JAN	FEB	MAR	APR	MAY	JUN	JUL	AUG			
12	TxDOT Review of 60% Plans	1	TxDOT	DEC	JAN	FEB	MAR	APR	MAY	JUN	JUL	AUG	SEP	OCT	NOV	DEC	JAN	FEB	MAR	APR	MAY	JUN	JUL	AUG	SEP	OCT	NOV	DEC	JAN	FEB	MAR	APR	MAY	JUN	JUL	AUG	SEP	OCT	NOV	DEC	JAN	FEB	MAR	APR	MAY	JUN	JUL	AUG			
13	Submit 95% Plans for Review		LG	DEC	JAN	FEB	MAR	APR	MAY	JUN	JUL	AUG	SEP	OCT	NOV	DEC	JAN	FEB	MAR	APR	MAY	JUN	JUL	AUG	SEP	OCT	NOV	DEC	JAN	FEB	MAR	APR	MAY	JUN	JUL	AUG	SEP	OCT	NOV	DEC	JAN	FEB	MAR	APR	MAY	JUN	JUL	AUG			
14	TxDOT Review of 95% Plans	1	TxDOT	DEC	JAN	FEB	MAR	APR	MAY	JUN	JUL	AUG	SEP	OCT	NOV	DEC	JAN	FEB	MAR	APR	MAY	JUN	JUL	AUG	SEP	OCT	NOV	DEC	JAN	FEB	MAR	APR	MAY	JUN	JUL	AUG	SEP	OCT	NOV	DEC	JAN	FEB	MAR	APR	MAY	JUN	JUL	AUG			
15	Submit PS&E (100% Plans) and Bid Documents for Approval (Cannot be submitted for review until after executing an AFA with TxDOT)		LG	DEC	JAN	FEB	MAR	APR	MAY	JUN	JUL	AUG	SEP	OCT	NOV	DEC	JAN	FEB	MAR	APR	MAY	JUN	JUL	AUG	SEP	OCT	NOV	DEC	JAN	FEB	MAR	APR	MAY	JUN	JUL	AUG	SEP	OCT	NOV	DEC	JAN	FEB	MAR	APR	MAY	JUN	JUL	AUG			
16	PS&E Review and Approval	1	TxDOT	DEC	JAN	FEB	MAR	APR	MAY	JUN	JUL	AUG	SEP	OCT	NOV	DEC	JAN	FEB	MAR	APR	MAY	JUN	JUL	AUG	SEP	OCT	NOV	DEC	JAN	FEB	MAR	APR	MAY	JUN	JUL	AUG	SEP	OCT	NOV	DEC	JAN	FEB	MAR	APR	MAY	JUN	JUL	AUG			
ENVIRONMENTAL COMPLIANCE				Notes: All bicycle/pedestrian projects require some degree of environmental compliance documentation. Environmental compliance phase work can only be completed after Design.																																															
17	Complete TxDOT's Scope Development Tool (Submit at or before Task #9)		LG	DEC	JAN	FEB	MAR	APR	MAY	JUN	JUL	AUG	SEP	OCT	NOV	DEC	JAN	FEB	MAR	APR	MAY	JUN	JUL	AUG	SEP	OCT	NOV	DEC	JAN	FEB	MAR	APR	MAY	JUN	JUL	AUG	SEP	OCT	NOV	DEC	JAN	FEB	MAR	APR	MAY	JUN	JUL	AUG			
18	Resource Agency Review	1	TxDOT	DEC	JAN	FEB	MAR	APR	MAY	JUN	JUL	AUG	SEP	OCT	NOV	DEC	JAN	FEB	MAR	APR	MAY	JUN	JUL	AUG	SEP	OCT	NOV	DEC	JAN	FEB	MAR	APR	MAY	JUN	JUL	AUG	SEP	OCT	NOV	DEC	JAN	FEB	MAR	APR	MAY	JUN	JUL	AUG			
19	Environmental Approval (Submit at least 6 months before desired let date)	6	TxDOT	DEC	JAN	FEB	MAR	APR	MAY	JUN	JUL	AUG	SEP	OCT	NOV	DEC	JAN	FEB	MAR	APR	MAY	JUN	JUL	AUG	SEP	OCT	NOV	DEC	JAN	FEB	MAR	APR	MAY	JUN	JUL	AUG	SEP	OCT	NOV	DEC	JAN	FEB	MAR	APR	MAY	JUN	JUL	AUG			
RIGHT OF WAY AND UTILITIES				Notes: Right of Way and Utilities are not eligible activities for TA Set-Aside funds, but are included in this schedule to identify any necessary phase work.																																															
20	Relocate Incidental Franchise Utilities (if applicable)		LG	DEC	JAN	FEB	MAR	APR	MAY	JUN	JUL	AUG	SEP	OCT	NOV	DEC	JAN	FEB	MAR	APR	MAY	JUN	JUL	AUG	SEP	OCT	NOV	DEC	JAN	FEB	MAR	APR	MAY	JUN	JUL	AUG	SEP	OCT	NOV	DEC	JAN	FEB	MAR	APR	MAY	JUN	JUL	AUG			
CONSTRUCTION				Notes: To obligate funds for construction, the opening of bids must occur before the end of December 2025.																																															
21	Letter of Authority (FPAA and SLOA)	2	TxDOT	DEC	JAN	FEB	MAR	APR	MAY	JUN	JUL	AUG	SEP	OCT	NOV	DEC	JAN	FEB	MAR	APR	MAY	JUN	JUL	AUG	SEP	OCT	NOV	DEC	JAN	FEB	MAR	APR	MAY	JUN	JUL	AUG	SEP	OCT	NOV	DEC	JAN	FEB	MAR	APR	MAY	JUN	JUL	AUG			
22	Project Advertisement (minimum 21 days)	1	LG	DEC	JAN	FEB	MAR	APR	MAY	JUN	JUL	AUG	SEP	OCT	NOV	DEC	JAN	FEB	MAR	APR	MAY	JUN	JUL	AUG	SEP	OCT	NOV	DEC	JAN	FEB	MAR	APR	MAY	JUN	JUL	AUG	SEP	OCT	NOV	DEC	JAN	FEB	MAR	APR	MAY	JUN	JUL	AUG			
23	Open Bid		LG	DEC	JAN	FEB	MAR	APR	MAY	JUN	JUL	AUG	SEP	OCT	NOV	DEC	JAN	FEB	MAR	APR	MAY	JUN	JUL	AUG	SEP	OCT	NOV	DEC	JAN	FEB	MAR	APR	MAY	JUN	JUL	AUG	SEP	OCT	NOV	DEC	JAN	FEB	MAR	APR	MAY	JUN	JUL	AUG			
24	Award Construction Contract (TxDOT Concurrence if LG Let)		LG/TxDOT	DEC	JAN	FEB	MAR	APR	MAY	JUN	JUL	AUG	SEP	OCT	NOV	DEC	JAN	FEB	MAR	APR	MAY	JUN	JUL	AUG	SEP	OCT	NOV	DEC	JAN	FEB	MAR	APR	MAY	JUN	JUL	AUG	SEP	OCT	NOV	DEC	JAN	FEB	MAR	APR	MAY	JUN	JUL	AUG			
25	Final Inspection & Acceptance of Construction Project		LG/TxDOT	DEC	JAN	FEB	MAR	APR	MAY	JUN	JUL	AUG	SEP	OCT	NOV	DEC	JAN	FEB	MAR	APR	MAY	JUN	JUL	AUG	SEP	OCT	NOV	DEC	JAN	FEB	MAR	APR	MAY	JUN	JUL	AUG	SEP	OCT	NOV	DEC	JAN	FEB	MAR	APR	MAY	JUN	JUL	AUG			



Project Schedule Template (cont.)

Identify the timeline for implementing the project.



Copy/paste colors for corresponding phase work in cells for submittal dates or the length of time spent on tasks.



Implementation of Projects

- Consistent with other Federal-aid highway programs, TA Set-Aside Program funds are administered by TxDOT.
- Regardless of whether the projects are located within the right-of-way of a Federal-aid highway, the treatment of projects will require:
 - Project Agreements
 - Authorization to Proceed Prior to Incurring Costs
 - Approval of environmental documents
 - Designing to federal standards
 - Prevailing Wage Rates (Davis-Bacon)
 - Buy America
 - Competitive Bidding



Contact Information: TxDOT District Staff



Dallas TxDOT District

Rachael Twiggs

Rachael.Twiggs@txdot.gov

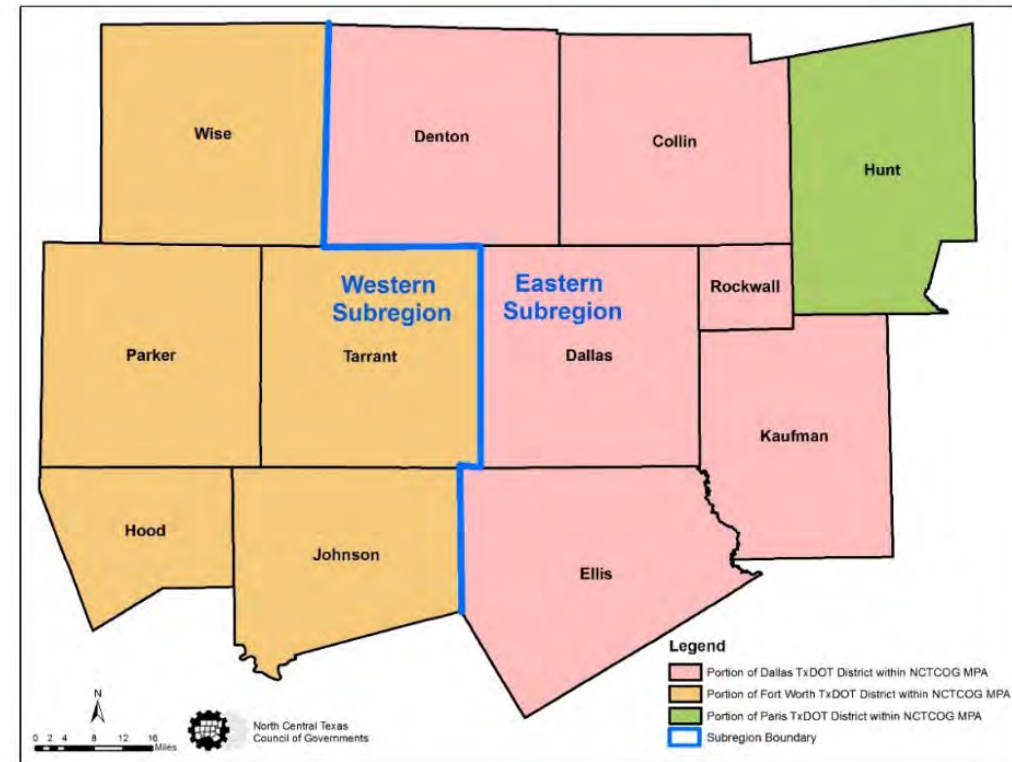
214-320-6669

Fort Worth TxDOT District

Iftekhar Ali

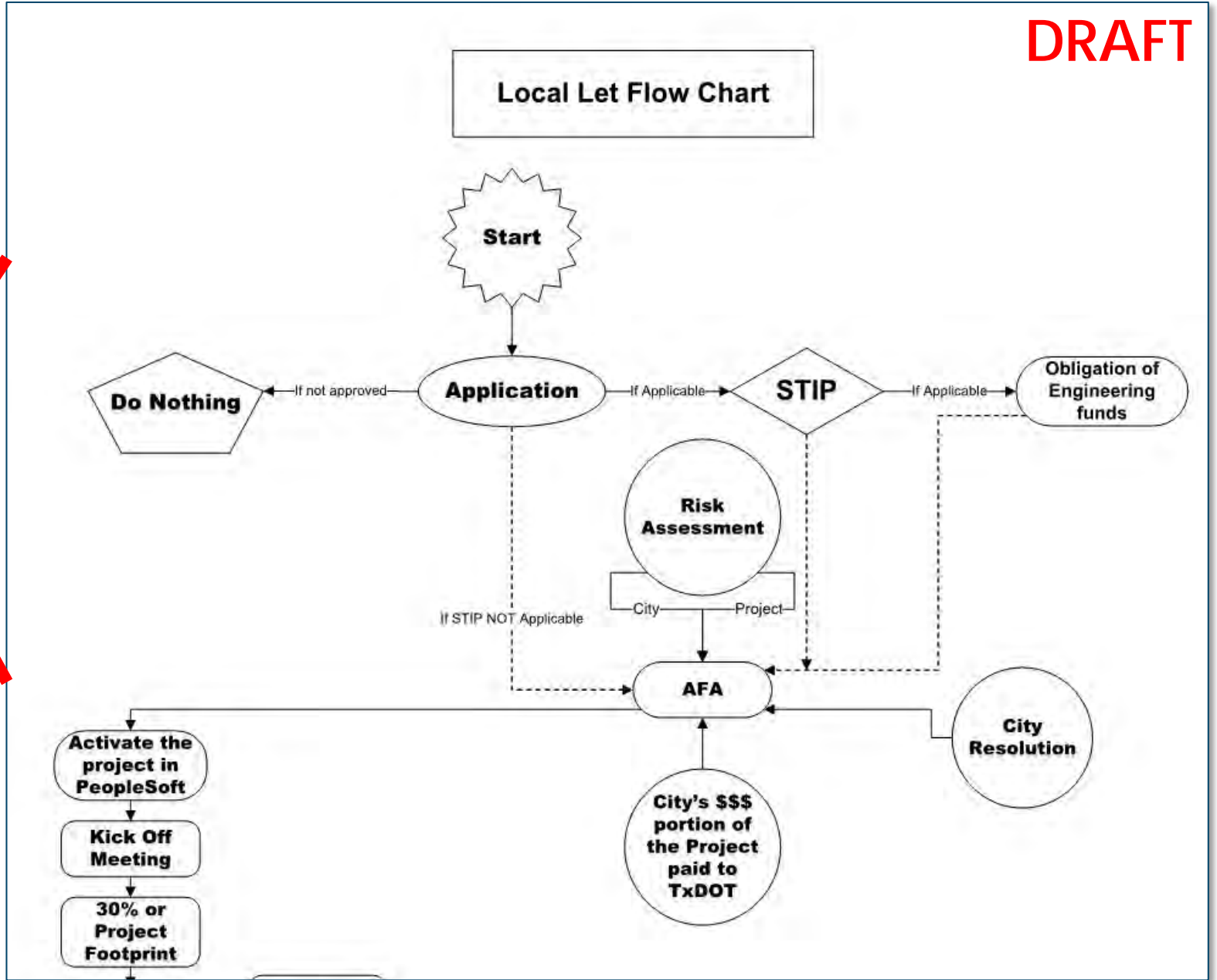
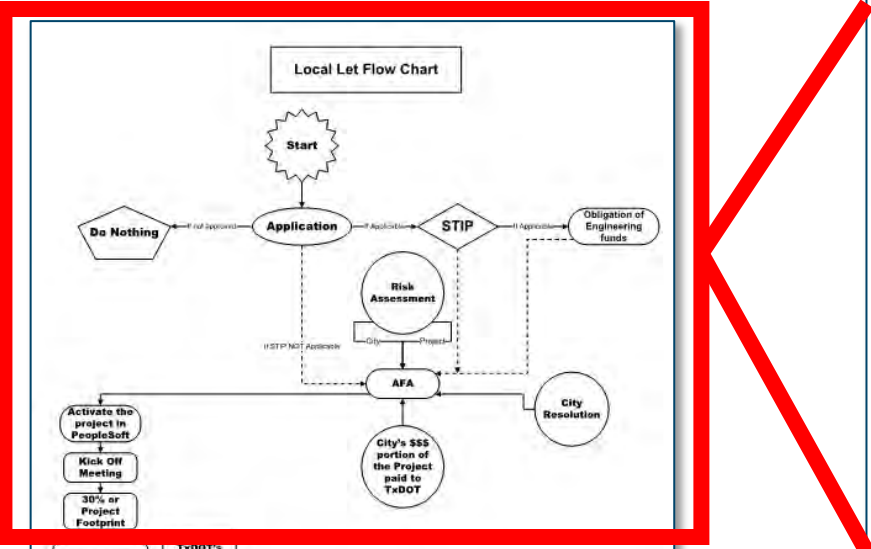
Iftekhar.Ali@txdot.gov

817-370-3565

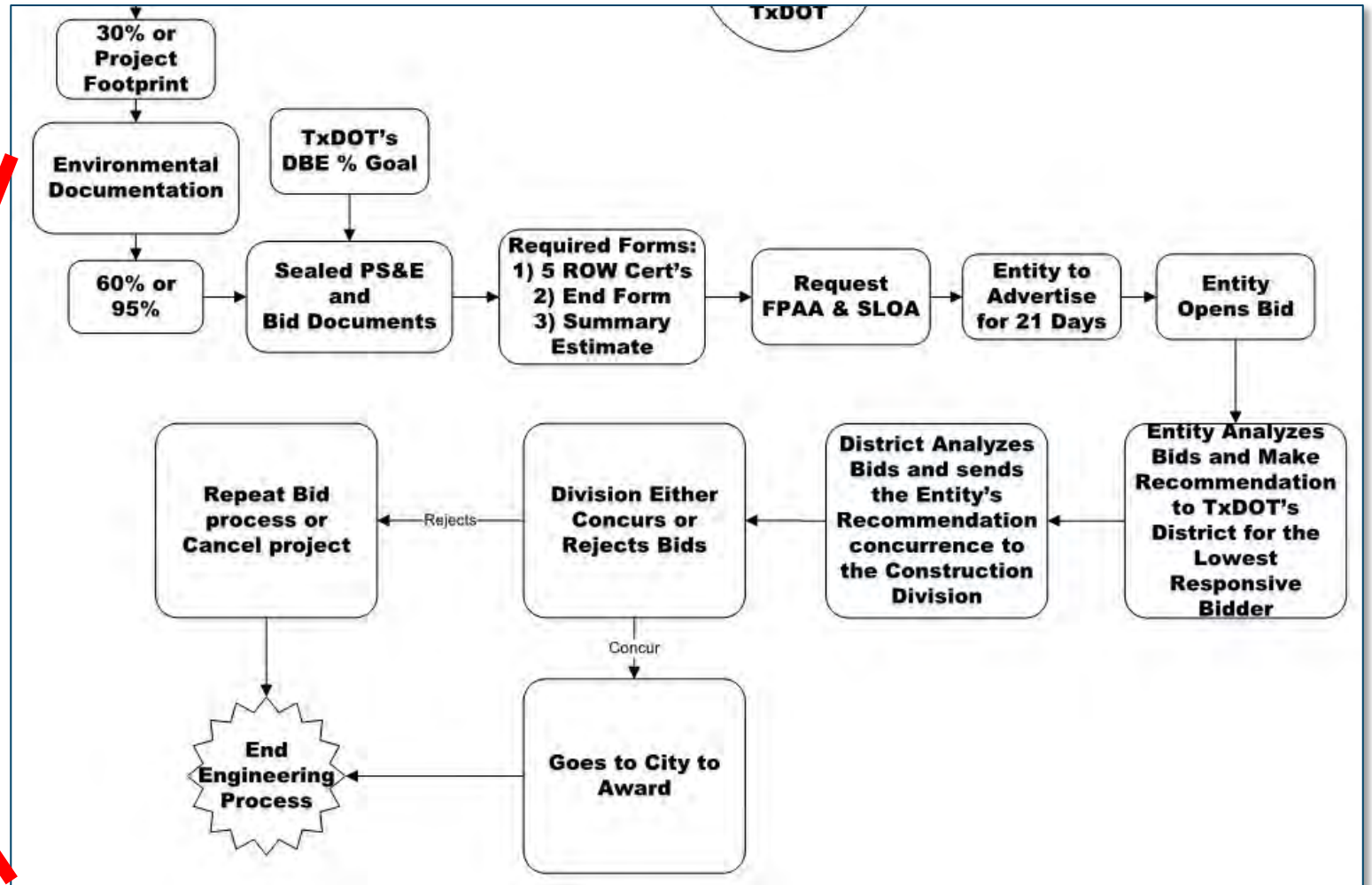
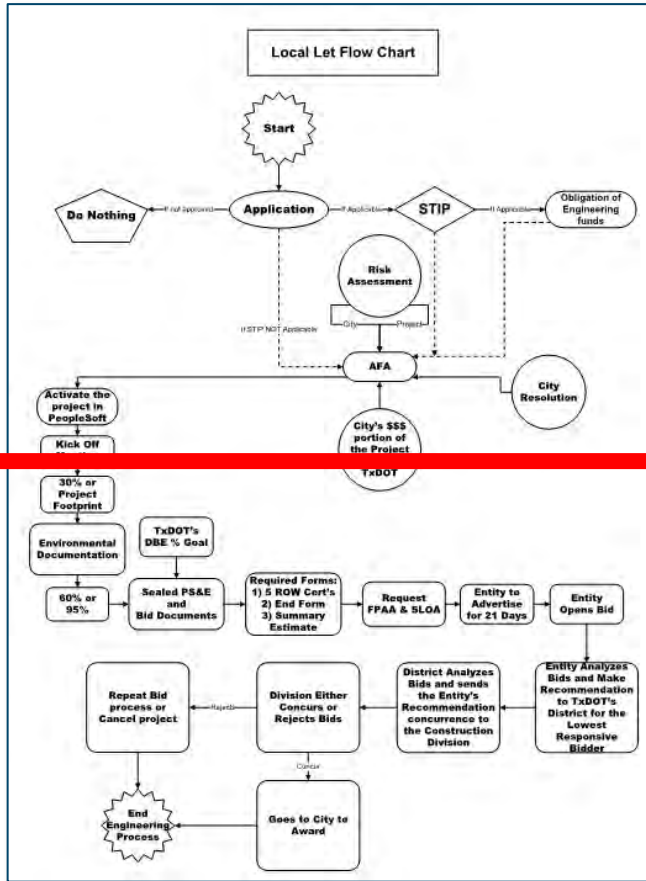


LG Flow Chart

DRAFT



LG Flow Chart (cont.)





Project Budget

Itemized Construction Costs

- Organize activities based on themes (facilities, illumination, landscaping, utilities, etc.)
- More detail is better
- Accurate cost estimates decrease the likelihood of cost overruns (especially with utilities)

Itemized Construction Costs (EXAMPLE)				
Line items must feature unit prices and quantities. Budgets with lump sums will be deemed incomplete. Distinguish line items that are new construction from rehabilitation and/or reconstruction. Items listed below are for illustrative purposes only.				
	Work Activities	Quantity	Units	Unit Price
	NEW CONSTRUCTION			
Group Itemized General Activities	Prepare Right-Of-Way (ROW)		STA	
	Remove Existing Concrete Sidewalk		SY	
	Remove Concrete Driveways		SY	
	List Other Relevant Line Items			
Group Itemized Roadway / Facility Work	Concrete Sidewalk (6 ft. width)		SY	
	Concrete Trail (12 ft. width minimum plus 2 ft. on each side, 6 in. depth, No. 3 rebar reinforcement)		SY	
	Concrete Driveway		SY	
	Concrete Curb		LF	
	Concrete Median		SY	
	Curb Ramps		EA	
	Storm Drainage		LF	
	Inlets		EA	
	Retaining Walls		SF	
	Shared-Use Path Trail Bridge (16 ft. width)		LF	
	List Other Relevant Line Items			
Group Itemized Illumination Work	Pedestrian Illumination Fixture (in accordance with TxDOT standards)		EA	
	30 in. Drilled Shaft for Illumination Fixture		LF	
	Conduit		LF	
	Electrical Conductor		LF	
	Ground Boxes		EA	
	List Other Relevant Line Items			
Group Itemized Landscaping Work	Trees (# gallon)		EA	
	Irrigation System		LS	
	Irrigation System Operation and Maintenance		MO	
	List Other Relevant Line Items			
Group Itemized Pavement Work	Pavement Markings		LF	
	High Visibility Crosswalk		LS	
	List Other Relevant Line Items			
Group Itemized Signal Work	Pedestrian Walk Signal / Push Buttons		LS	
	HAWK/Midblock Signal		EA	
	List Other Relevant Line Items			
Group Itemized Utility Work	Utility Adjustments: Fire hydrants and utility meters		EA	
	Utility Adjustments: Water and sewer lines		LF	
	List Other Relevant Line Items			
Group Itemized Miscellaneous Work	Mobilization (%)		LS	Enter lump sums for miscellaneous work based on percentages here.
	Barricades, Signs, and Traffic Handling		MO	
	Portable Changeable Message Sign		DAY	
	TMA (Stationary)		EA	
	Miscellaneous (%)		LS	Enter lump sums for miscellaneous work based on percentages here.
	Contingencies (%)		LS	Enter lump sums for miscellaneous work based on percentages here.
	Franchise Utilities (%)		LS	Enter lump sums for miscellaneous work based on percentages here.
	List Other Relevant Line Items			



Itemized Construction Costs (cont.)

Itemized Construction Costs (EXAMPLE)					
Line items must feature unit prices and quantities. Budgets with lump sums will be deemed incomplete. Distinguish line items that are new construction from rehabilitation and/or reconstruction.					
	Work Activities	Quantity	Units	Unit Price	Amount
NEW CONSTRUCTION					
Group Itemized General Activities	Prepare Right-Of-Way (ROW)		STA		
	Remove Existing Concrete Sidewalk		SY		
	Remove Concrete Driveways		SY		
	<i>List Other Relevant Line Items</i>				
Group Itemized Roadway / Facility Work	Concrete Sidewalk (6 ft. width)		SY		
	Concrete Trail (12 ft. width minimum plus 2 ft. on each side, 6 in. depth, No. 3 rebar reinforcement)		SY		
	Concrete Driveway		SY		
	Concrete Curb		LF		
	Concrete Median		SY		
	Curb Ramps		EA		
	Storm Drainage		LF		
	Inlets		EA		
	Retaining Walls		SF		
	Shared-Use Path Trail Bridge (16 ft. width)		LF		
	<i>List Other Relevant Line Items</i>				



Cost Estimates and Budget Issues

- Cost estimates based on sound professional judgement.
- Be sure to address utility needs (e.g. relocations).
- Applicants cannot revise the project scope of work after the application is submitted.
- Projects cannot substantially change after the funding award.



Schedule

Milestone	Date
Call for Projects Opens	July 18, 2022
Call for Projects Workshop	July 19, 2022
Deadline for Requesting GIS Technical Assistance from NCTCOG Staff (if necessary)	August 17, 2022
Deadline for Requesting TxDOT District Engineer Letter of Consent for Proposed Projects Located in State Right-of-Way (if applicable)	August 19, 2022
Call for Projects Closes (Applications Due by 5PM)	Sept 9, 2022
Review of Projects/Scoring by NCTCOG Staff	Sept – Oct 2022
Public Meeting	Nov 2022
Surface Transportation Technical Committee – Action to Recommended Project Funding Awards	Dec 2, 2022
Regional Transportation Council – Action to Approve Project Funding Awards	Dec 8, 2022
Submittal Deadline for TIP Modifications	Jan. 27, 2023
Deadline for Project Sponsors to Execute Agreements with TxDOT	December 2023
Deadline for Project Sponsors to Open Bids and Obligate Funds	December 2025



Contact Us

Application Category Primary Point of Contact

Active Transportation

Daniel Snyder, AICP

Senior Transportation Planner

dsnyder@nctcog.org

(817) 608-2394

Safe Routes to School Safe Routes to Rail Safety and Technology

Erin Curry

Transportation Planner

ecurry@nctcog.org

(817) 704-5601

Senior Staff

Karla Windsor, AICP



Senior Program Manager

kwindsor@nctcog.org

(817) 608-2376

Kevin Kokes, AICP



Program Manager

kkokes@nctcog.org

(817) 695-9275

Shawn Conrad



Principal Transportation
Planner

sconrad@nctcog.org

(817) 704-5695





Questions?