



Do You Know? Leaks & Spills

- Know where spill kits are located.
- Replace used kit items and report spills.
- Check Safety Data Sheets in the event of a spill for proper cleanup information.

PREVENTION > RETENTION



**MANY LEAKS AND SPILLS CAN BE PREVENTED
WITH ROUTINE MAINTENANCE!**



Make daily inspections of equipment and vehicles a part of your routine to proactively catch problems.

Already have a leaking vehicle or piece of equipment?
Keep it inside under cover with a drip pan.

Stay Safe and Be In Compliance

- Know where Safety Data Sheets are located.
- Keep Safety Data Sheets accessible.
- Check Safety Data Sheets in the event of a spill for proper cleanup information.



**STORAGE,
STORAGE,
STORAGE!**

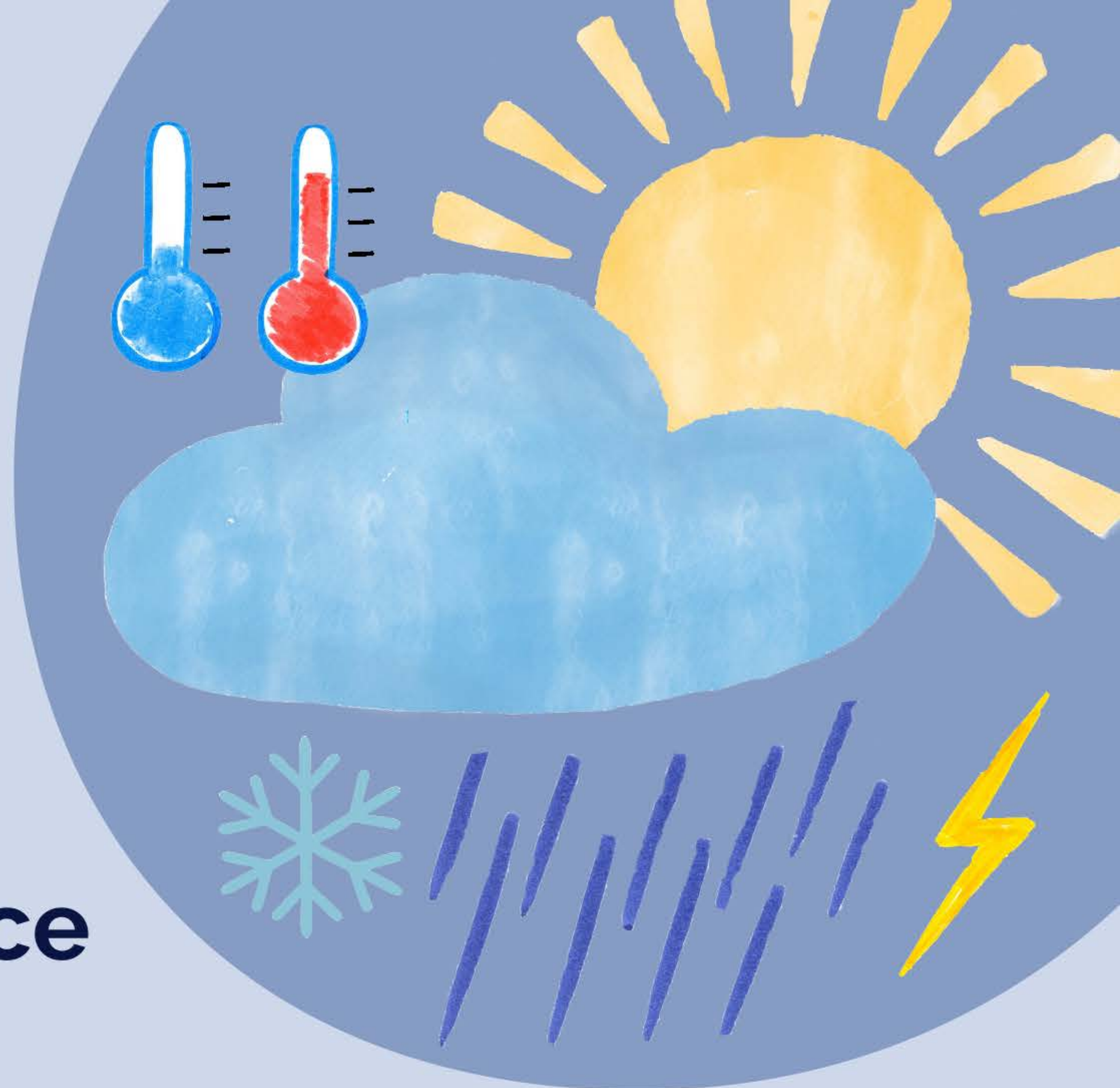


Storing materials in sealed, original containers indoors is always a best practice.

Need to replace a container? Make sure the replacement container is clearly labeled. If storage of materials outside is necessary, opt for a covered and paved area and inspect them regularly for corrosion or signs of leaks. Storing materials away from high traffic areas to help prevent accidents that might cause spills is always a good idea.

For indoor storage areas, use a spill containment base and dispensing drums should have a drip pan. Outdoor storage areas should be bordered by a curb or containment wall to help contain spills.

BAD WEATHER COMING?



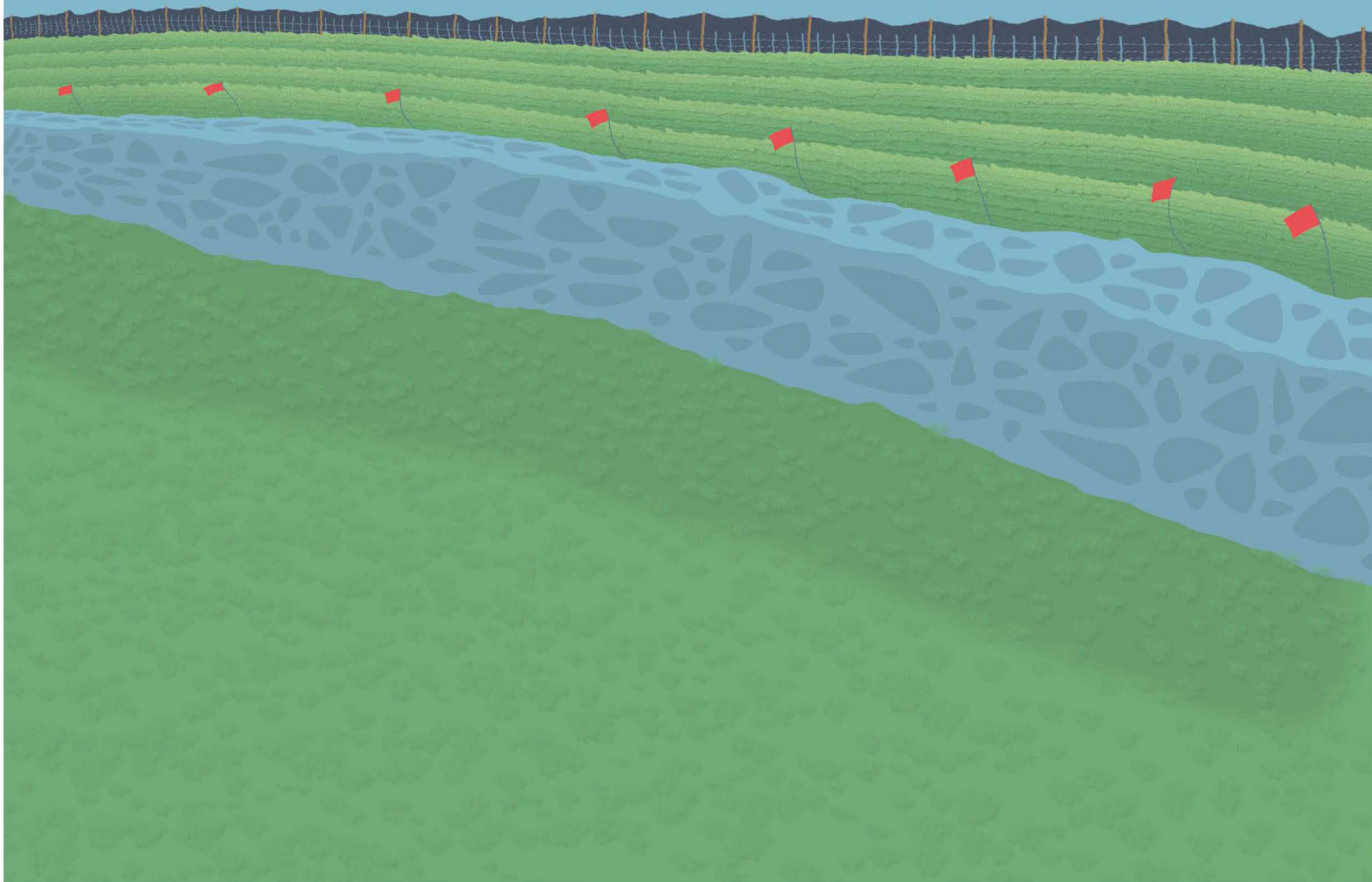
**Plan ahead for it to reduce
pollution potential.**

Here are some tips to consider for daily operations during inclement weather:

- When possible, only schedule deliveries ahead of the inclement weather.
- Avoid fueling up fleets in the rain, sleet, or snow. Plan to fill up ahead of time or wait until the weather has passed when possible.
- Don't need to be out driving? Avoid getting out in inclement weather to reduce the potential for fuel spills from accidents.
- Check on chemical storage ahead of inclement weather. Is it covered or stored properly? If it is at risk of freezing, make a plan to store it properly ahead of time.

Dirt will Hurt Keep It On Site

- Stabilize an area after disturbing it.
- Mulch and then contain the mulch.
- If you see it, report it. Promptly report erosion control issues.



SPRINKLER & IRRIGATION BEST PRACTICES

It's just dirt, right?

Follow these watering and irrigation best practices to help prevent runoff of soil, pesticides, and fertilizers.

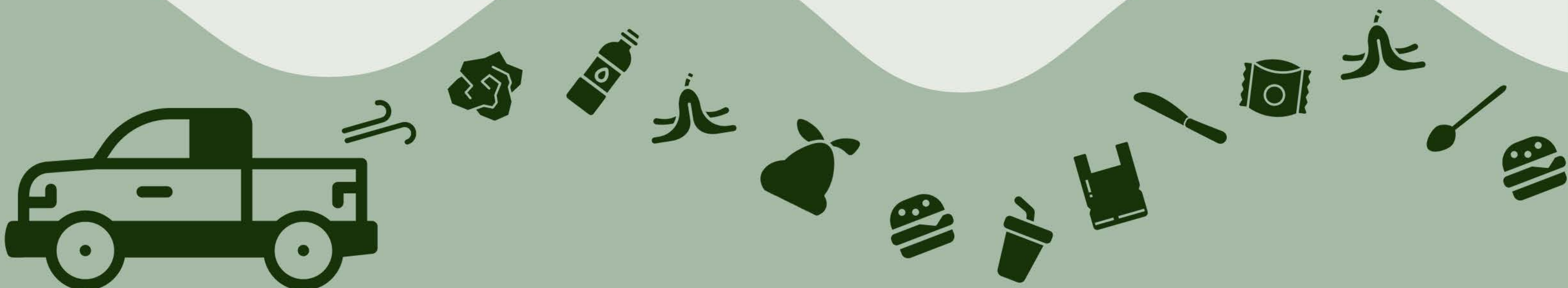
- Maintain sprinkler heads and irrigation systems to prevent unnecessary water loss.
- Don't water in the rain or freezing temperatures.
- Water at the right time. Refer to the label for pesticides and fertilizers to make sure you are applying them and then watering at the right time.



TRASH - IT GOES WITH THE FLOW

NOT ALL LITTERING IS INTENTIONAL, BUT IT CAN BE PREVENTED. TRASH TENDS TO "GO WITH THE FLOW" BUT YOU CAN HELP KEEP ESCAPED TRASH FROM BECOMING LITTER BY FOLLOWING THESE SIMPLE SUGGESTIONS.

- Keep trash picked up around your facility and grounds.
- Make sure the lids on dumpsters are kept closed to prevent animals, the wind, or other elements from scattering it.
- The back of your vehicle/truck is not a trash can. Keep a bag for trash inside your vehicle and never in the open bed of a truck where it can blow out.



**DIDN'T WRITE IT DOWN?
DIDN'T HAPPEN!**



**Keep training records where
you can **find** them.**

IS IT RAINING?

I'M NOT SPRAYING!



NEVER SCHEDULE PESTICIDE APPLICATIONS
⚠️ WHEN PRECIPITATION OR HIGH WIND ⚠️
CONDITIONS ARE IN THE FORECAST.

Mulch Leaves Not Litter

- Pick litter and other debris up to prevent mulching it into small pieces.
- Don't blow or wash leaves, grass clippings, other debris into the street.
- Mulch or blow leaves and grass clippings back onto the lawn or bag them for disposal.
- Don't wash equipment in the street.



Big Litter
(easy to pick up)



Small Litter
(hard to pick up)

IS YOUR CITY PLANNING AN OUTDOOR EVENT?



Plan for litter and floatable control with these best practices:

- Maintain toilets on a schedule to prevent an overflow
- Map out trash and/or recycling locations to ensure there are enough bins placed at the right locations.
- Maintain a schedule for emptying trash and/or recycling bins to prevent overflow issues.
- Make sure event staff know how and who to report trash or toilet issues to so problems are addressed quickly.