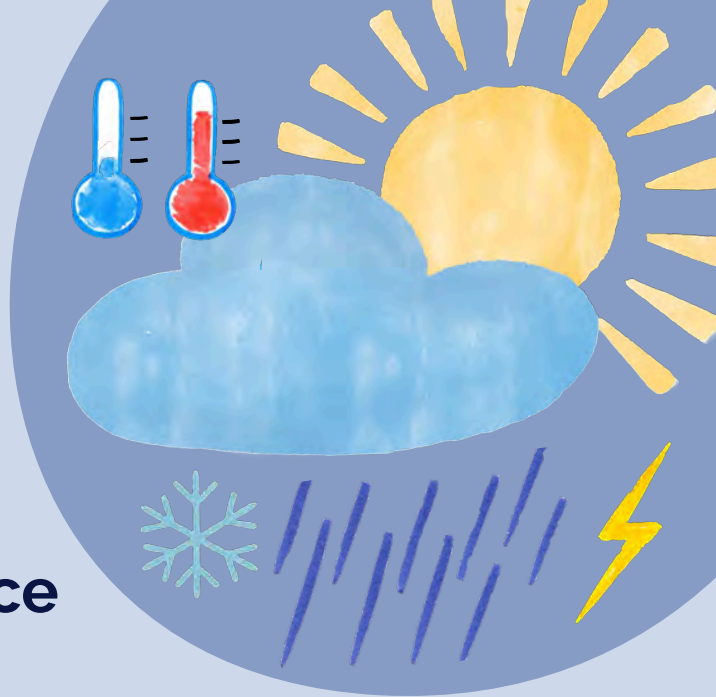


# BAD WEATHER COMING?

**Plan ahead for it to reduce  
pollution potential.**



**Here are some tips to consider for  
daily operations during inclement weather:**

- When possible, only schedule deliveries ahead of the inclement weather.  
  
Avoid fueling up fleets in the rain, sleet, or snow. Plan to
- fill up ahead of time or wait until the weather has passed when possible.
- Don't need to be out driving? Avoid getting out in inclement weather to reduce the potential for fuel spills from accidents.
- Check on chemical storage ahead of inclement weather. Is it covered or stored properly? If it is at risk of freezing, make a plan to store it properly ahead of time.