



The Basin–Wide Approach

New 303(D) Vision

Addressing Bacterial Impairments in
Upper Trinity River Watersheds



TCEQ Tasking

Implement a *River Basin Approach* for addressing multiple **bacterial** impairments simultaneously

Project Partners

- Texas Institute for Applied Environmental Research (TiAER)
- North Central Texas Council of Governments (NCTCOG)



TCEQ Tasking

Public Education and Outreach Task

- Facilitating watershed leaders with General Education & Outreach needs across Target Watersheds

Summarize Existing Water Quality Data Task

- Collection of known existing data information, & previously developed reports
- Overall assessment of the watershed, its impairments, and potential sources



Additional Tasking

Recovery Potential Index (RPI)

Texas Stream Team (TST)

- Assessing potential capability for bacterial monitoring

Impaired Segments/AUs

Upper Trinity River Basin Impaired Segments FY-2016

<u>Name</u>	<u>AU</u>
Sycamore Creek	0806E
Ash Creek	0809B
West Fork Trinity River Below Bridgeport Reservoir	0810_
Big Sandy Creek	0810A
Martin Branch	0810C
Rowlett Creek	0820B
Wilson Creek	0821C
East Fork Trinity River Above Lake Lavon	0821D
Village Creek	0828A
Walnut Creek	0838C
Cottonwood Creek	0841F
Fish Creek	0841K
Kirby Creek	0841N
Crockett Creek	0841V

NEW PERFORMANCE MEASURE WQ27

- Based on the 303(d) VISION
- Developed by the States and EPA 2013
- Replaces the current, number of TMDLs per year, measure
- A 7 year effort
- 2016 to 2022
- The goal is approved plans for impairments

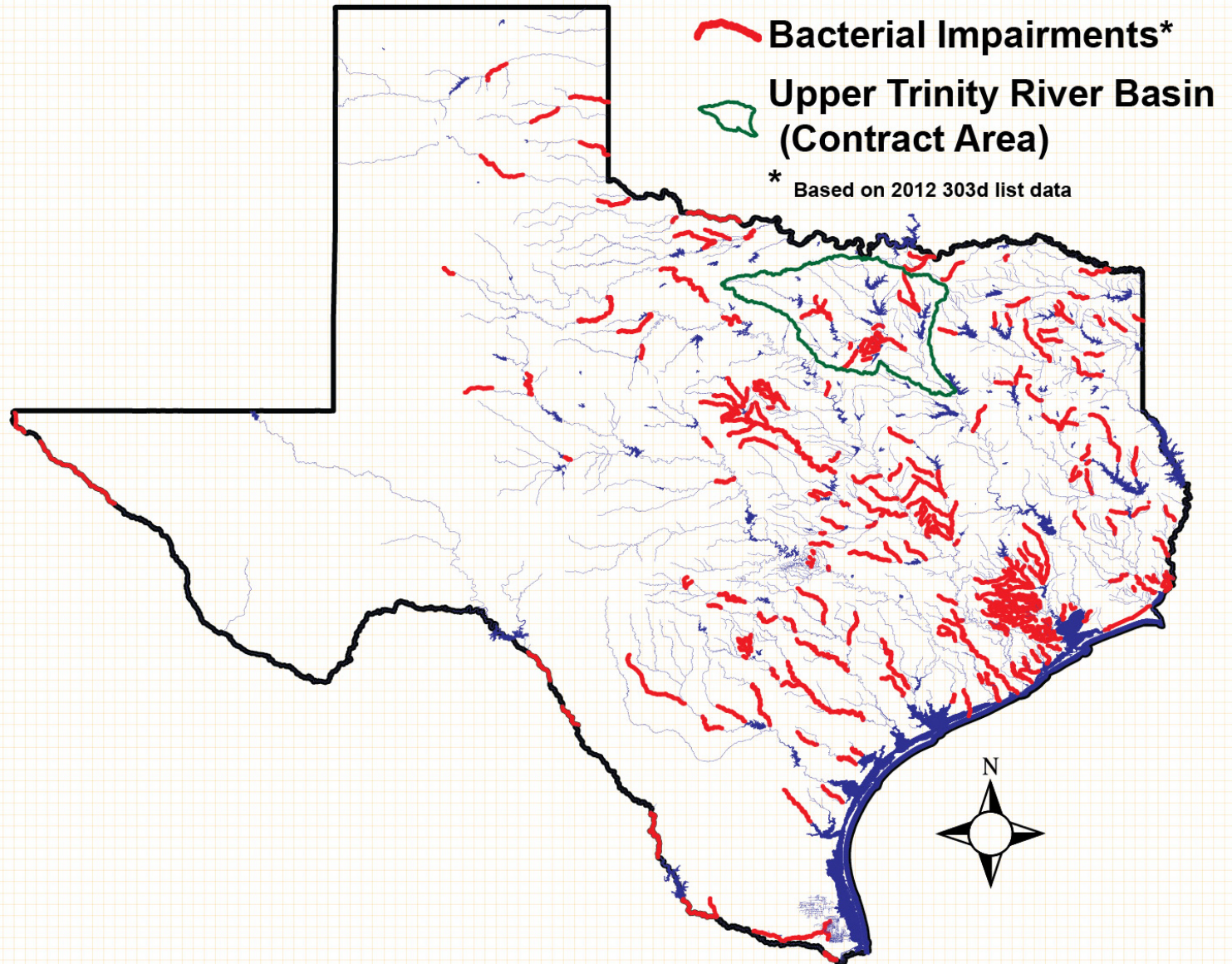


NEW PERFORMANCE MEASURE WQ27

4 Elements

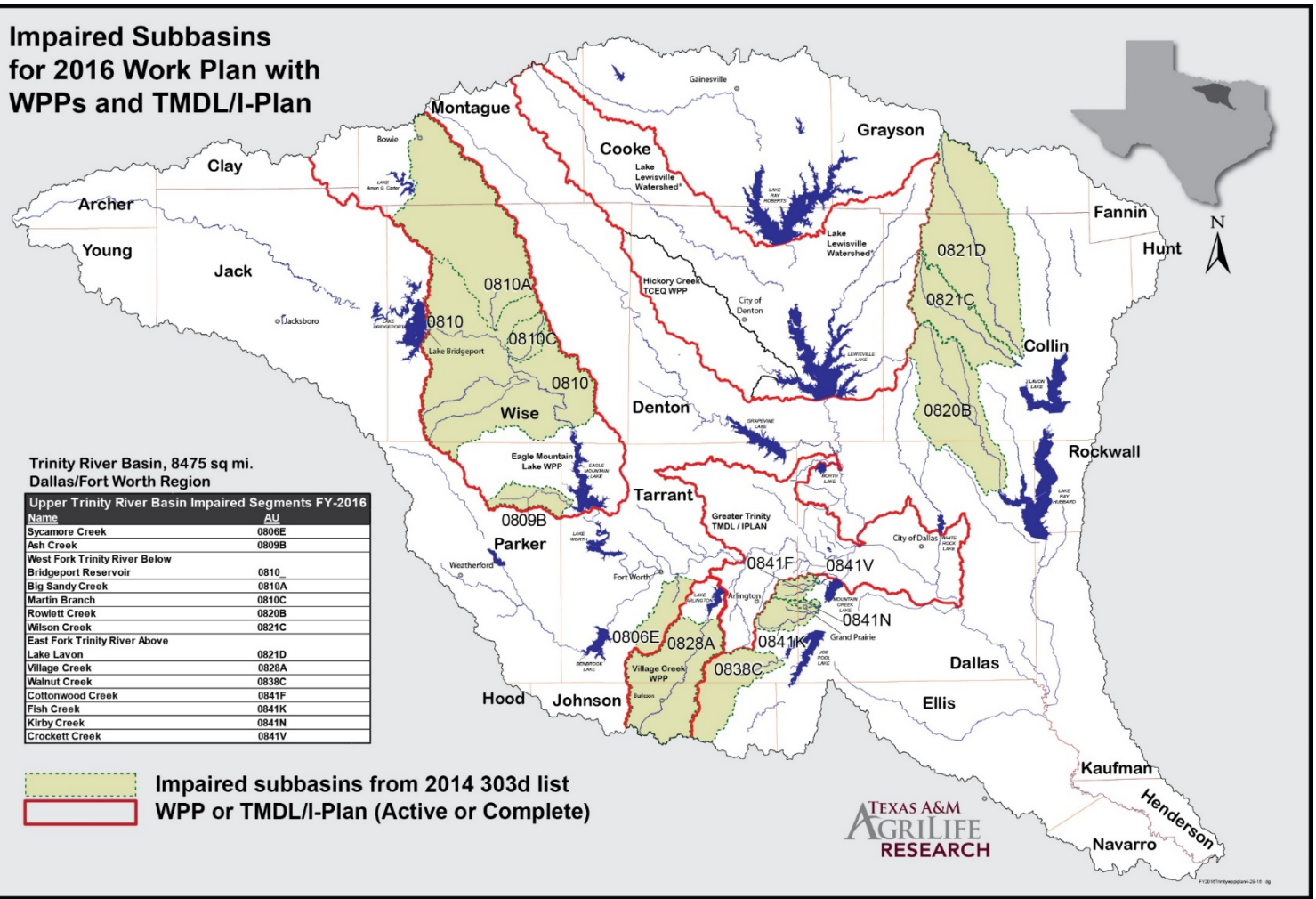
- Priority Waters
- Universe
- Baseline
- Targets

Priority Waters



TARGETS

Impaired Subbasins for 2016 Work Plan with WPPs and TMDL/I-Plan



Trinity River Basin, 8475 sq mi.
Dallas/Fort Worth Region

Upper Trinity River Basin Impaired Segments FY-2016

Name	AU
Sycamore Creek	0806E
Ash Creek	0809B
West Fork Trinity River Below Bridgeport Reservoir	0810
Big Sandy Creek	0810A
Martin Branch	0810C
Rowlett Creek	0820B
Wilson Creek	0821C
East Fork Trinity River Above Lake Lavon	0821D
Village Creek	0828A
Walnut Creek	0838C
Cottonwood Creek	0841F
Fish Creek	0841K
Kirby Creek	0841N
Crockett Creek	0841V

- Impaired subbasins from 2014 303d list
- WPP or TMDL/I-Plan (Active or Complete)

TEXAS A&M
AGRI LIFE
RESEARCH



Time Frame

7 years to complete the plans

Years 1-4

- Initial outreach to raise awareness in the watershed
- Determine the need for Recreational Use Attainability Analyses (RUAAs) and additional sampling
- Complete the RUAAs and sampling



Time Frame

Years 4-7

- Coordinating Committee will determine what approach will be used to develop plans
- Develop plans
 - TMDL/Implementation Plan
 - Watershed Protection Plan
 - Both
 - Other



BASELINE

The Baseline:

- percentage of the Universe that has an approved plan in place [[Starting Point](#)]

Approved plans include

- TCEQ adopted / EPA approved TMDL
 - TCEQ approved I-Plan
- EPA approved Watershed Protection Plan

The Basin–Wide Approach New 303(D) Vision

Addressing Bacterial Impairments in Upper Trinity River Watersheds



Upper Trinity River Basin Score Card

Listed Stream Segments Bacteria Impaired Subbasins	Organization	Square Miles	Approach	Projected Completion Year	Percent Area
0841F_01 Cottonwood Creek	North Central Texas Council of Governments	12	Greater Trinity TMDL/I-Plan	2016	
0841K_01 Fish Creek	North Central Texas Council of Governments	26	Greater Trinity TMDL/I-Plan		
0841N_01 Kirby Creek	North Central Texas Council of Governments	33	Greater Trinity TMDL/I-Plan		
0841V_01 Crockett Branch	North Central Texas Council of Governments	1	Greater Trinity TMDL/I-Plan		
	Subtotal	72			6%
0810_01 West Fork Trinity River Below Bridgeport	Tarrant Regional Water District	310	WPP	2017	
0810A_01 Big Sandy Creek	Tarrant Regional Water District	228	WPP		
0810C_01 Martin Branch	Tarrant Regional Water District	21	WPP		
0809B_01 Ash Creek	Tarrant Regional Water District	27	WPP		
0806E_01 Sycamore Creek	City of Fort Worth / TCEQ	37	TMDL/I-Plan		
	Subtotal	623			48%
0828A_01 Village Creek	Trinity River Authority	121	Village Creek WPP	2018	
0838C_01 Walnut Creek	Trinity River Authority	67			
	Subtotal	188			14%
0820B_01 Rowlett Creek	North Texas Municipal Water District / City of Dallas	137		2020	
	Subtotal	137			10%
0821C_01 Wilson Creek	North Texas Municipal Water District	76	WPP	2021	
0821D_01 East Fork Trinity River above Lake Lavon	North Texas Municipal Water District	209	WPP		
	Subtotal	285			22%
Totals		1305			100%



Contact

Larry J. Beran, PhD

Senior Research Scientist

**Texas A&M AgriLife Research and Extension Center -
Stephenville**

Texas A&M AgriLife Research

1229 North US Highway 281

Stephenville, Texas 76401

phone: (254) 968-4144 Ext 230 | cell: (254) 592-6059

fax: (254) 965-3759

lberan@ag.tamu.edu