

# Resource Conservation Council

## Facility Conformance Subcommittee

May 10, 2024

Staff Contact: Hannah Ordonez

Senior Environment & Development Planner

# Procedures for Online Meeting

---

- ▶ Please keep your microphone on mute when not speaking.
- ▶ Please state your name and the entity you are representing when you ask a question or provide a comment.

# Welcome and Introductions

---

- Patricia Redfearn, City of Grand Prairie  
Chair, Facility Conformance Subcommittee

# Words from the Chair

---

- Patricia Redfearn, City of Grand Prairie  
Chair, Facility Conformance Subcommittee

# Welcome and Introduction of Applicant and Applicant Representative

---

- Patricia Redfearn, City of Grand Prairie  
Chair, Facility Conformance Subcommittee

# Presentation

---

- ▶ Permit application for the Chisholm Trail Disposal Landfill in Wise County.

Thad Owings, VP Corporate Operations, Chisholm Trail Disposal Landfill

Gregg Adams, Principal Engineer, Biggs & Mathews Environmental, Inc.



**GREENGROUP**

**NCTCOG Facility Conformance  
Subcommittee Review  
May 10, 2024**

**Chisholm Trail Disposal  
Type IV Landfill  
Wise County, Texas**

**Municipal Solid Waste Permit Number: 2421**

# Agenda

- **Green Group / Chisholm Trail Disposal**
  - Thad Owings, VP Landfill Operations and Development
  - Permitting & Operation Experience
  - Strategic Business Partners
  - GGH Corporate Website
- **Biggs & Mathews Engineers of Record**
  - Gregg Adams Permitting Engineer
- **Chisholm Trail Disposal**
  - Project Overview
  - Area Map
  - Current Land Use
  - Aerial Map
  - Permitting Timeline
  - Permitted Boundary / Landfill Footprint
  - Initial Waste Intake / Life of Site
  - Type IV Acceptable Waste / Recycling of Waste Materials
- **Conformance with NCTCOG Solid Waste Plan**
  - Why is Chisholm Trail Disposal Needed?
  - Conformance Review Evaluation Form





# Green Group - Thad Owings

## **Thad Owings, Vice President of Landfill Operations and Development**

Thad has over 34 years of experience in management and operations in the solid waste industry. In 1990, he began his career operating and remediating landfills for Browning-Ferris Industries.

Thad joined Allied Waste in 1997 permitting and expanding landfills in the southeast United States. In 2006, he joined Republic Services and managed over seventy – five million dollars in annual revenue that included 4 landfills, 5 transfer stations and a large disposal contract with the city of Atlanta.

In 2009, Thad joined Green Group Holdings as a Project Manager overseeing projects in Alabama, Texas, North Dakota and Wyoming. In 2016, he was promoted to Vice President of Operations and Development.

He has successfully permitted multiple projects to include site due diligence and selection, real estate acquisition, community and governmental outreach, and construction and operations management. Thad is SWANA MOLO certified and holds licenses in Texas, Alabama and Florida.



# Green Group – Permitting & Operation Experience

**Green Group is an environmental service company that develops critical waste management infrastructure to support the disposal, recycling, reuse, and restoration needs of a region, and to positively impact the well-being of neighboring communities.**

## **Current Operation Site:**

- Layon Landfill, MSW Landfill | *Inarajam, Guam*

## **Previously Operated and Permitted Sites:**

- Northeastern New Mexico Regional Landfill | *Wagon Mound, NM*
- Arrowhead Landfill | *Uniontown, AL*
- Grasslands Environmental | *Douglas, WY*
- Mesa County Landfill, Transfer Station, Recycling & Compost Facility | *Grand Junction, CO*
- Brooks C&D Landfill | *Wichita, KS*
- 130 Environmental Park, Permitted MSW Waste Disposal Facility | *Lockhart, TX*
- Black Mallard Disposal, Permitted Oilfield Waste Disposal Facility | *Ross, ND*



# Green Group - Strategic Business Partners

**Green Group is backed by two privately held investors,  
Herzog, Inc. and Phillips & Jordan.**

# HERZOG

[Herzog Contracting Corp.](#) is a proven industry leader in landfill operation, civil construction, rail maintenance, and development of specialized railroad and mass transit equipment throughout North America.



[Phillips & Jordan](#) is a woman-owned heavy civil and ROW infrastructure contractor that pursues challenging projects with complex problems, difficult conditions, and aggressive schedules. It operates with a sense of urgency and a desire to provide the best possible outcomes for its clients. P&J's commitment to quality is proven by its exceptional work ethic, deep integrity, extensive resources, and priority on safety.



## Green Group Solid Waste Core Services

- Siting & Permitting
- Due Diligence
- Full Site Assessment and Planning

See website for more information:

[www.gghcorp.com](http://www.gghcorp.com)



# Biggs & Matthews

Biggs & Mathews Environmental was established in 1999 to provide professional services to the solid waste industry. BME has since grown to a staff of over 35 professional engineers, geologists, CAD designers, and technicians that provide a wide variety of services to our clients.

## **Gregg Adams Permitting Engineer**

Gregg has 39 years of experience in general civil, geotechnical and construction engineering. After working for several national consulting firms, he became a founding principal in Biggs & Mathews Environmental in 1999. During the last 31 years he has worked exclusively on solid waste projects providing permitting, design, construction management and quality assurance services to a variety of private and public clients. His permitting experience includes dozens of permit amendments to upgrade and expand existing solid waste facilities and eight applications for greenfield solid waste facilities. In addition, he has served as the engineer and construction manager for over 2,500 acres of landfill liners and over 2,000 acres of landfill cover systems.

**As a company, BME provides expertise for anything from conceptual planning to closure for the solid waste industry, including but not limited to:**

- Siting studies
- Preliminary design studies
- Permitting greenfield sites
- Amendments and modifications to existing permits
- Infrastructure improvements design and construction management
- Landfill liner system design, construction management and certification
- Leachate collection system design, construction management and certification
- Final cover system design, construction management and certification
- Landfill gas collection system design, construction management and certification
- Groundwater monitoring system design and installation
- Landfill gas monitoring system design and installation
- Airspace inventory management, planning and reporting
- Groundwater monitoring sampling and reporting
- Landfill gas monitoring sampling and reporting
- Soil borrow inventory management and planning
- Stormwater compliance sampling and reporting



# CTD – Project Overview

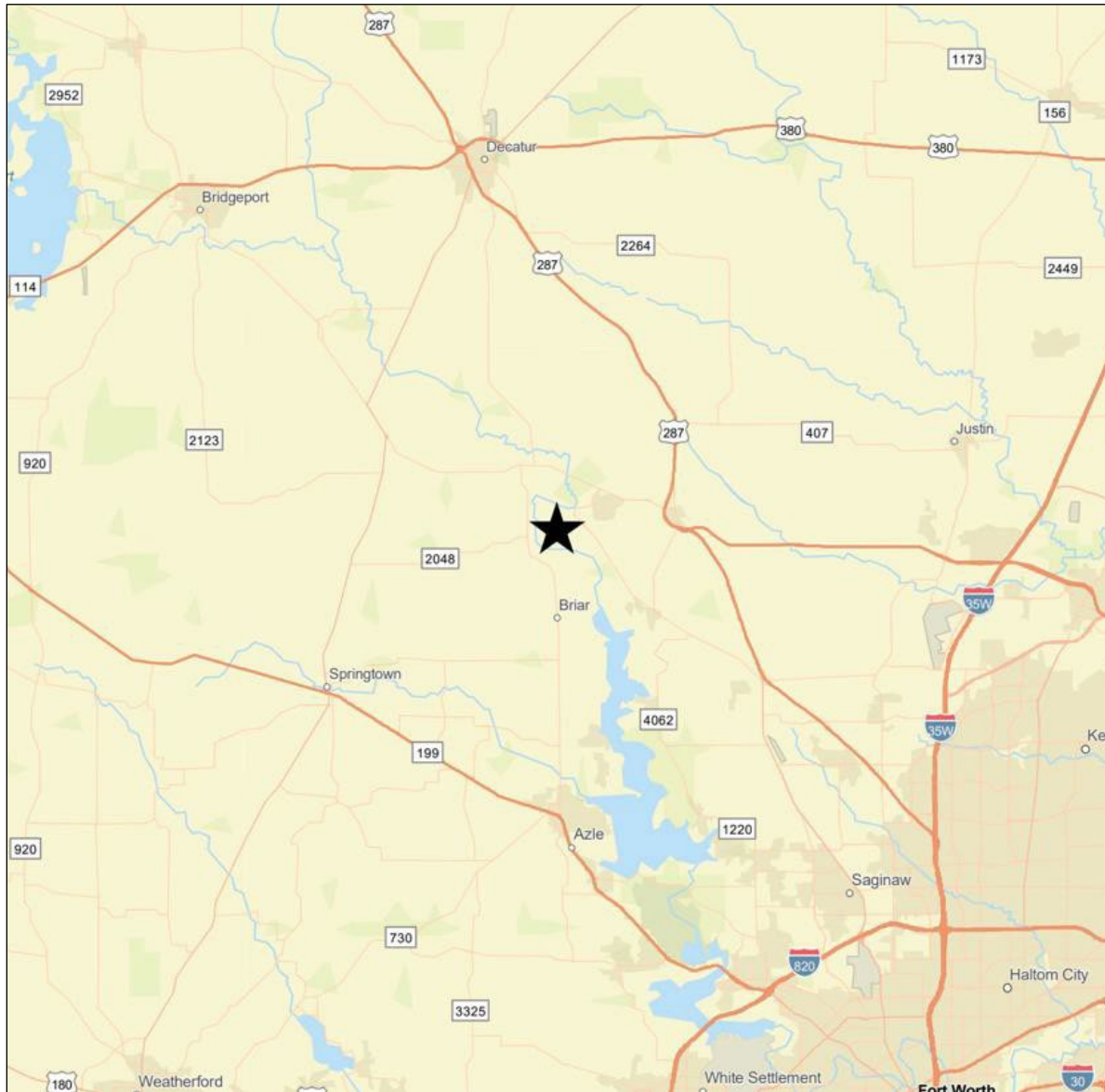
## **ABOUT CHISHOLM TRAIL DISPOSAL**

Chisholm Trail Disposal (CTD) will be a turnkey waste management facility that is being permitted by Green Group (GGH) designed to serve the construction and demolition (C&D) disposal needs of Wise, Tarrant, Denton, and Parker Counties. CTD site is currently a soil mining operation that will be repurposed for the C&D waste disposal facility.

After a rigorous permitting process with the Texas Commission on Environmental Quality (TCEQ), CTD will serve as a Type IV landfill to provide long-term C&D disposal needs.



# CTD – Area Map



The Chisholm Trail Disposal Site is located west of Aurora, TX on CR 4668.



# CTD – Current Land Use

- The CTD site is currently a soil mining operation that will be repurposed for the C&D waste disposal facility.
- This property has been an active mining operation for the last 40 years.
- Repurposing an old mining operation minimizes the impact to the environment by continuing to use the property for beneficial reuse.





# CTD – Aerial Map



Chisholm Trail Disposal Site  
Aerial Map

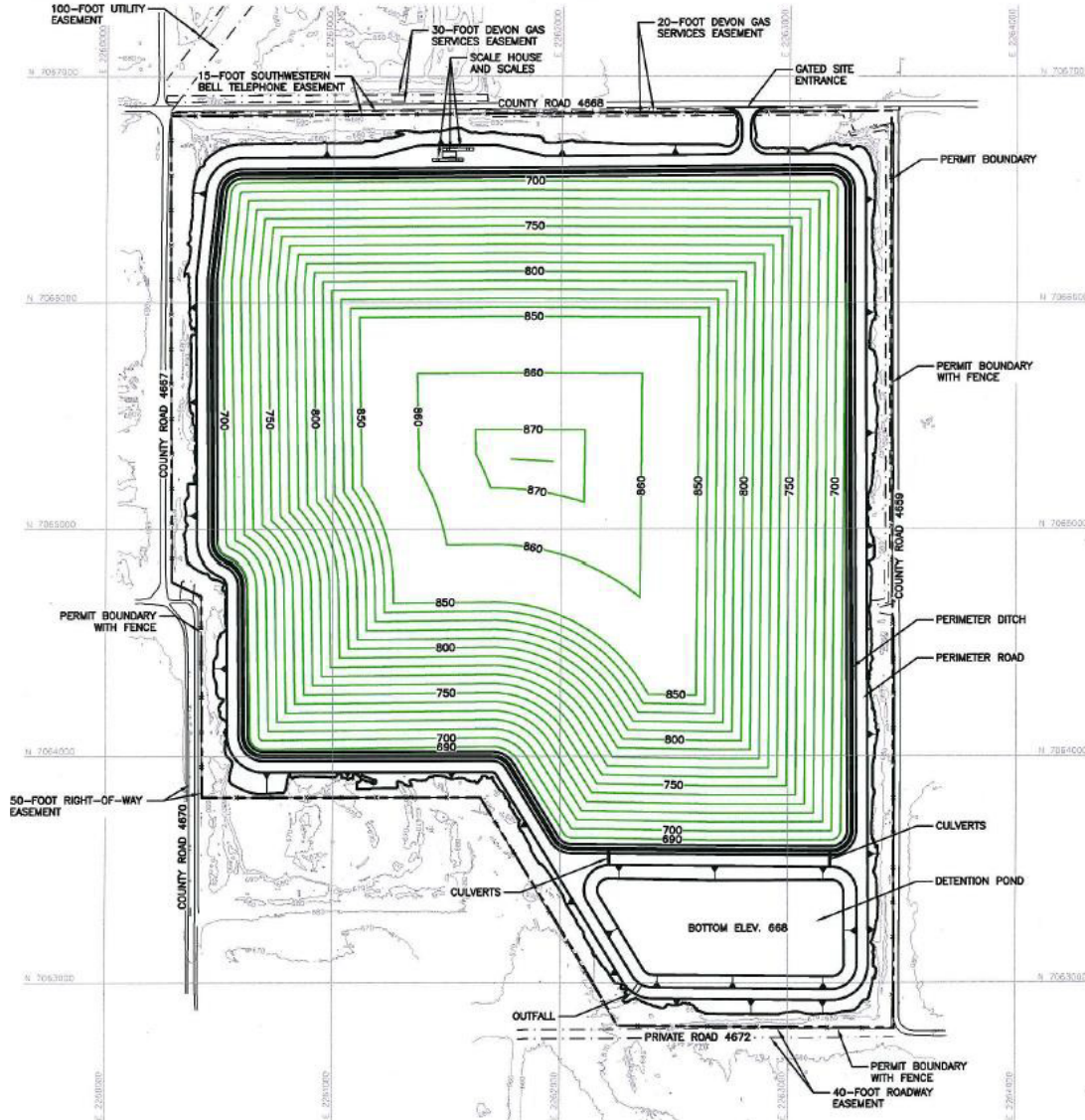
# CTD – Permitting Timeline

## Chisholm Trail Disposal Application Timeline

- Submitted CTD Landfill Permit Application Parts I & II 2-26-24
- TCEQ Approval of Boring Plan 3-12-24
- US Army Corp of Engineers No Permit Required Letter 3-26-24
- Installed Public Notice Signs 3-29-24
- CTD Landfill Permit Application Parts I & II Administrative Complete 4-15-24
- Started Site Borings & Piezometers 5-1-24
- Newspaper Publication of TCEQ Notice Complete 5-9-24



# CTD – Permitted Boundary / Landfill Footprint



## Chisholm Trail Site Design

Total Conceptual Airspace: +/- 41M Cubic Yards  
Permit Boundary 251 Acres  
Landfill Footprint: 169 Acres



# CTD – Initial Waste Intake / Life of Site

## Initial Waste Intake:

- 750 tons per day
- 234,000 tons per year

## Estimated Life of Site:

- 60 years



# CTD – Type IV Acceptable Waste

## Types of waste that CTD will be permitted to accept

- Construction and demolition waste
- Concrete, brick, rock, wood, paper, plastics, cardboard
- Furniture, roofing shingles and tiles, brush, and yard waste
- Class 2 Industrial waste
- Class 3 Industrial waste
- Metal , concrete and brick will be available for storage and recycling



# CTD – Conformance with NCTCOG Solid Waste Plan

## Why CTD is Needed:

### Booming Population Growth

Without significant additions to the landfill capacity, regional forecasts estimate that by 2037 there will be no remaining capacity to serve the NCTCOG Western Region.

As part of the Landfill Capacity Needs Assessment, the NCTCOG surveyed 38 local governments including cities and counties. Their greatest concerns included long-term disposal capacity and waste-hauling transportation issues.<sup>1</sup>

The Western Region is projected to see significant increases in population and waste generation. By 2040, both will be up more than 30% from 2020.

1. NCTCOG. (2021). *West Region Landfill Capacity Study Needs Assessment Technical Report*. p. 5,18-19,68.



# CTD – Conformance with NCTCOG Solid Waste Plan

## Why CTD is Needed:

### Capacity Specific to C&D Waste

CTD will serve construction and demolition waste disposal needs and extend municipal solid waste (MSW) landfill capacity in the DFW Western Region.

Construction and demolition waste (C&D) comprises 20% of total waste in the region, of which a large amount currently ends up in local MSW landfills. Additional C&D capacity will conserve capacity in surrounding MSW landfills.

Beyond simply needing additional landfill capacity for all types of waste, the region specifically needs disposal capacity for construction and demolition waste to support infrastructure growth for housing, businesses, healthcare facilities, and schools.



# CTD – Conformance with NCTCOG Solid Waste Plan

## Why CTD is Needed:

### Supporting the Economy

Chisholm Trail Disposal will encourage economic growth and minimize costs to residents, businesses, and local governments with increased long-term disposal capacity.

Proper waste planning is essential to sustaining communities as well as supporting the growth of local businesses and institutions. In the Western Region, businesses, institutions, and local governments employ just over 1 million people <sup>2</sup>, a number that will continue to grow as long as businesses and institutions have the waste infrastructure necessary to operate in the area.

Chisholm Trail Disposal will keep down transportation costs for residents, local governments, and businesses. Without a new disposal site, the number of facilities will decrease and the cost of hauling waste to alternative facilities will increase. <sup>3</sup>

<sup>2</sup> NCTCOG. (2021). *West Region Landfill Capacity Study Needs Assessment Technical Report*. p. 9.

<sup>3</sup> NCTCOG. (2021). *West Region Landfill Capacity Study Needs Assessment Technical Report*. p. 57-58.





# CTD – Conformance Review Evaluation Form

**For more information on this presentation  
or the conformance review evaluation form, please contact**

Thad Owings, VP Corporate Operations

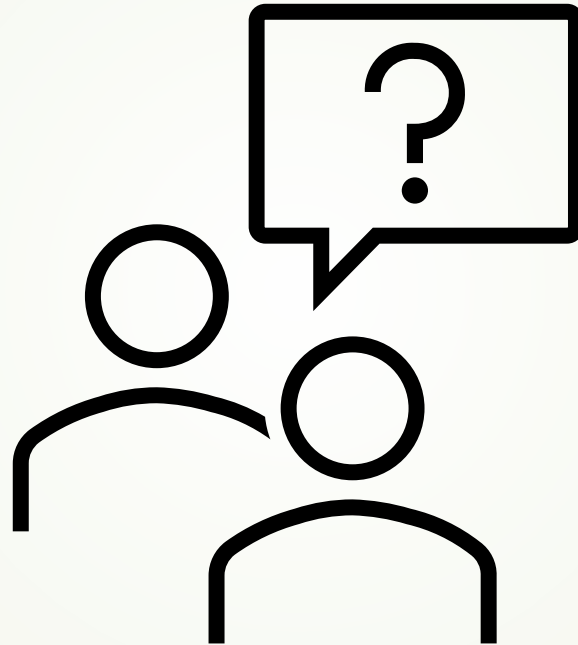
[towings@gghcorp.com](mailto:towings@gghcorp.com)

770.720.2717



# Q & A for Applicant

---



# Action Item

---

The Subcommittee will discuss the permit application for the Chisholm Disposal Landfill and vote whether to recommend to the Resource Conservation Council (RCC) that the application conforms to the North Central Texas Regional Solid Waste Management Plan.

# Next Steps

---

- The Resource Conservation Council will vote to approve the Subcommittee's conformance recommendation for the Chisholm Trail Disposal Landfill at its next meeting on May 21, 2024.
- A letter stating the RCC's final conformance determination will be submitted to the TCEQ, and a copy will be sent to the applicant.

## Contact

### **Hannah Ordonez**

Senior Environment & Development  
Planner

[hordonez@nctcog.org](mailto:hordonez@nctcog.org)

817-695-9215

### **Alexa Gilbert**

Environment &  
Development Planner I

[agilbert@nctcog.org](mailto:agilbert@nctcog.org)

817-608-2334

### **Cassidy Campbell**

Program Manager

[ccampbell@nctcog.org](mailto:ccampbell@nctcog.org)

817-608-2368

## Connect



Facebook.com/nctcogenv



@nctcogenv



nctcogenv



youtube.com/user/nctcoged



EandD@nctcog.org



nctcog.org/envir