

CHANGING MOBILITY

DATA, INSIGHTS, AND DELIVERING
INNOVATIVE PROJECTS DURING COVID
RECOVERY

Regional Transportation Council
May 2021

Michael Morris, P.E.
Director of Transportation

TRAVEL BEHAVIOR BY MODE



Bicycle/Pedestrian (+73%, March)



Freeway Volumes (-6%, March)

Airport Passengers (-28%, March)

Toll Roads (-34%, February)

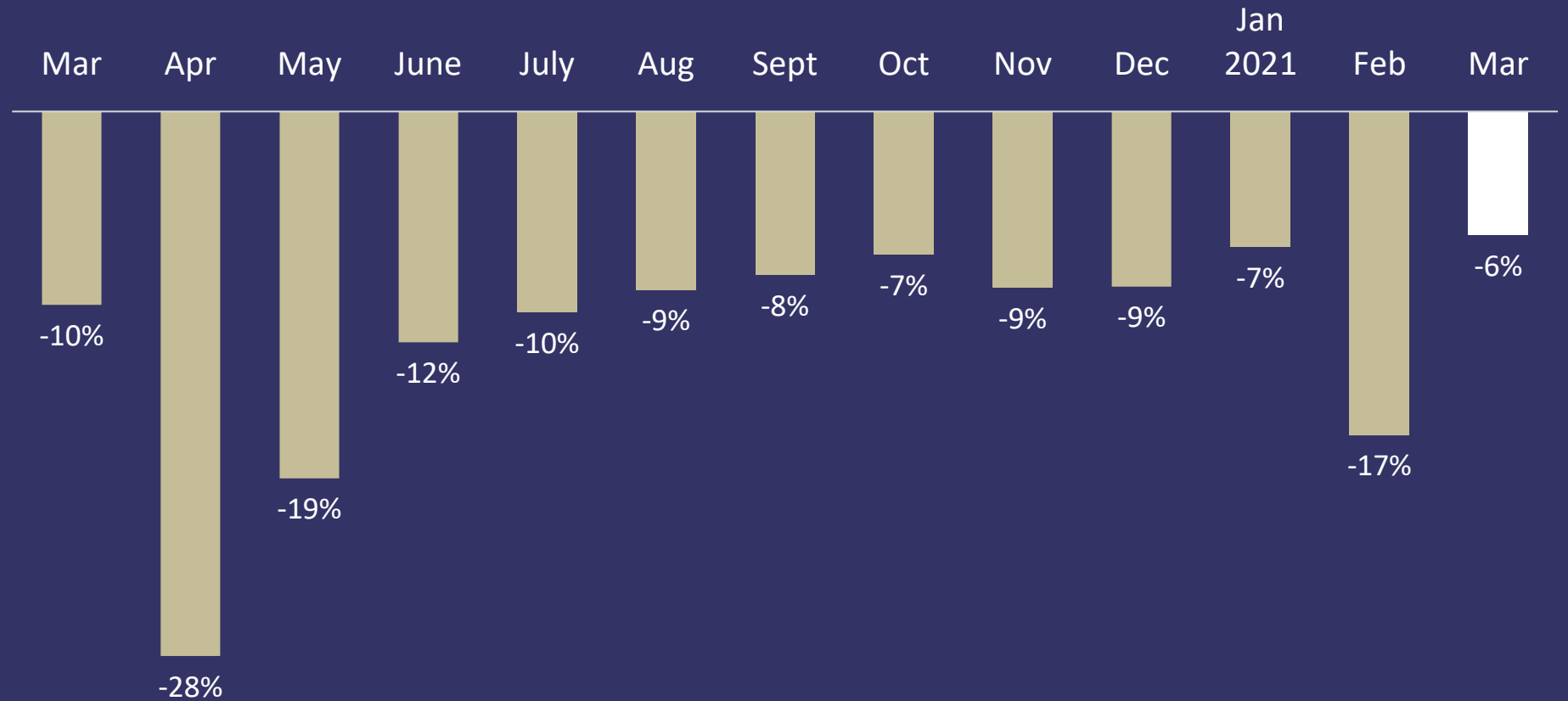
Transit Ridership (-50%, March)



ROADWAY TRENDS

Traffic Decrease vs Baseline

Average
Weekday
Freeway
Volumes



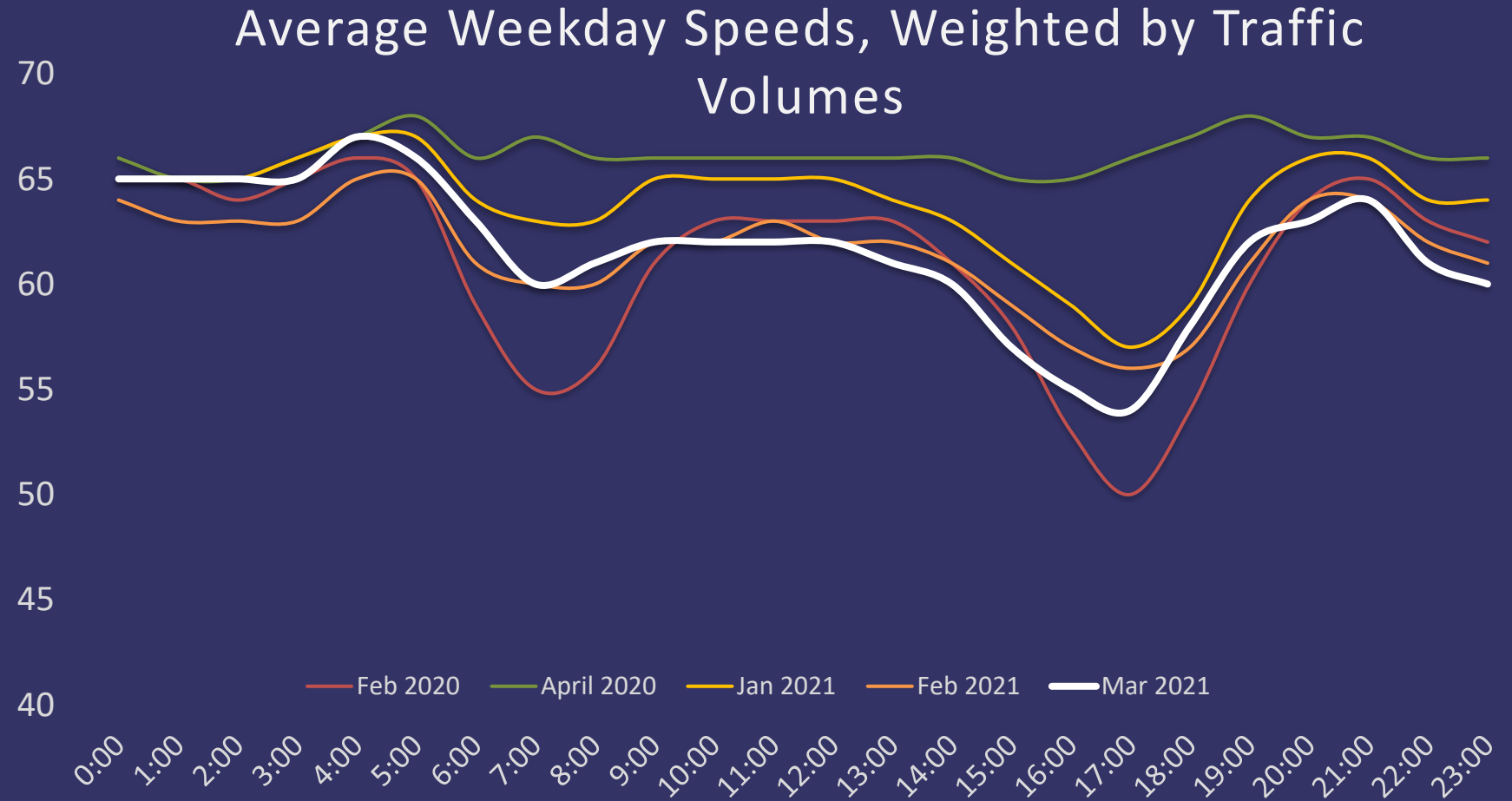
Source: TxDOT Dallas/TxDOT Fort Worth Radar Traffic Counters. As of October, growth calculated based on Fort Worth

Note: Baseline is March 2019-February 2020.

Note: Drop in freeway volumes in Feb 2021 due in large part to week-long winter storm.

ROADWAY TRENDS

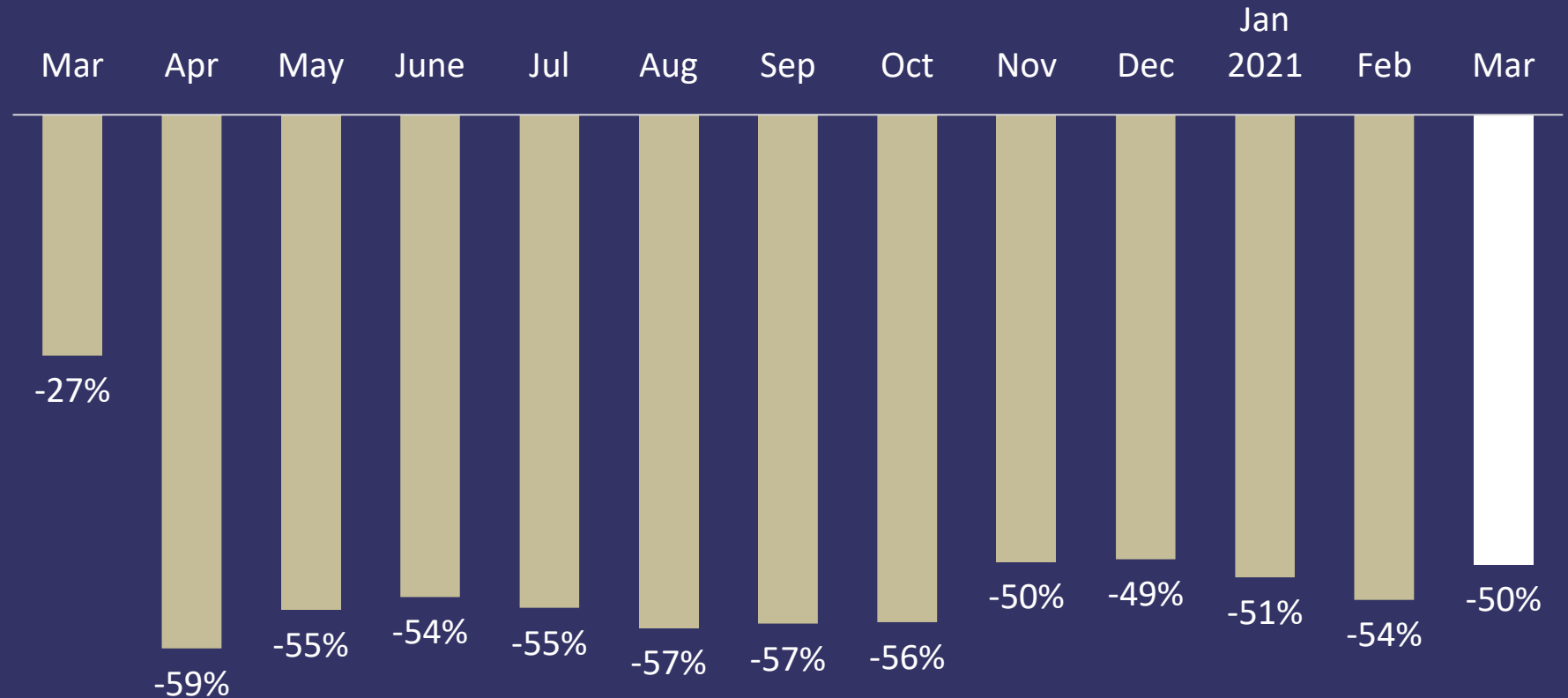
Regional Average
Freeway Speeds



TRANSIT IMPACTS

Weekday
Ridership

Passenger Decrease vs Baseline



Source: DART, DCTA, and Trinity Metro

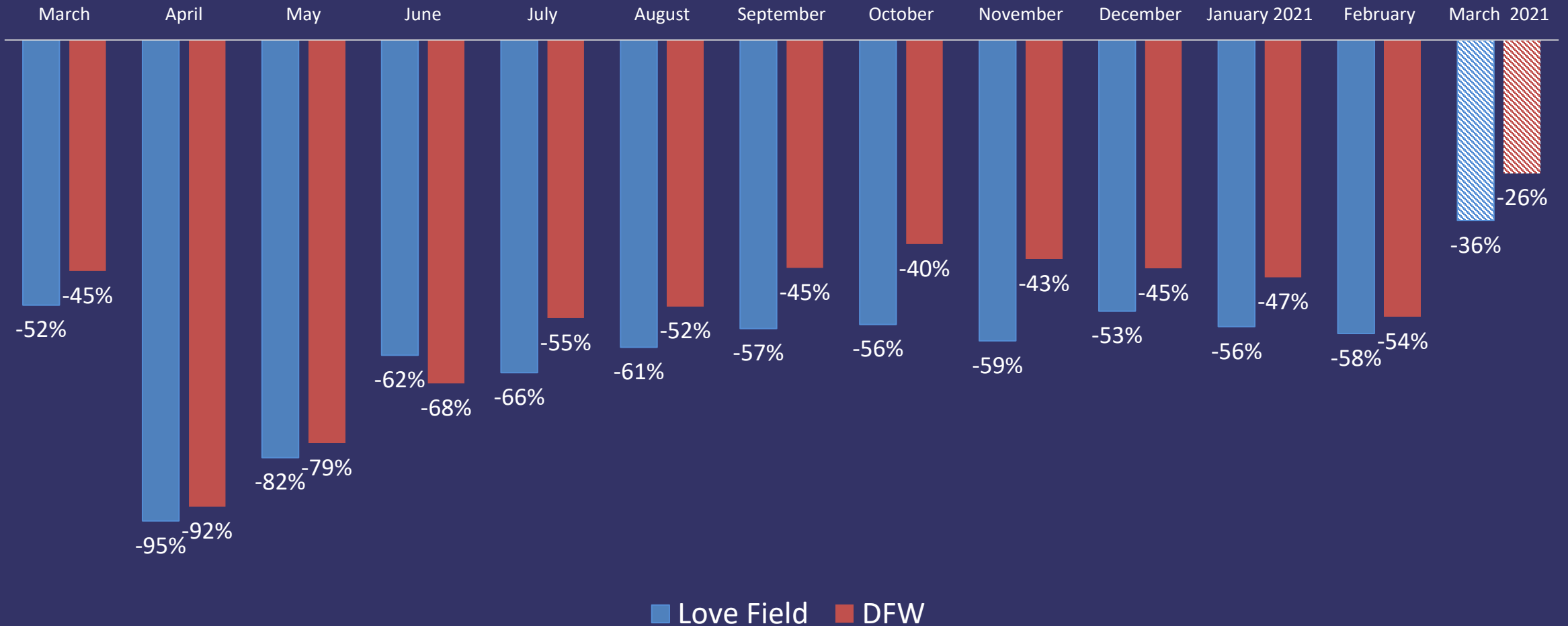
Note: Baseline is March 2019-February 2020.

Note: Transit ridership impacted in Feb 2021 by week-long winter storm.

AIRPORT TRENDS

Passengers

Change in Airport Passengers vs Baseline



Source: Dallas Love Field and DFWIA Websites

Note: Baseline is March 2019-February 2020.

FINANCIAL IMPLICATIONS



0

Transit Sales Tax Allocation (-5.8%, February)

Motor Fuel Tax (-5.2%, February)

Sales Tax (-13.3%, February)

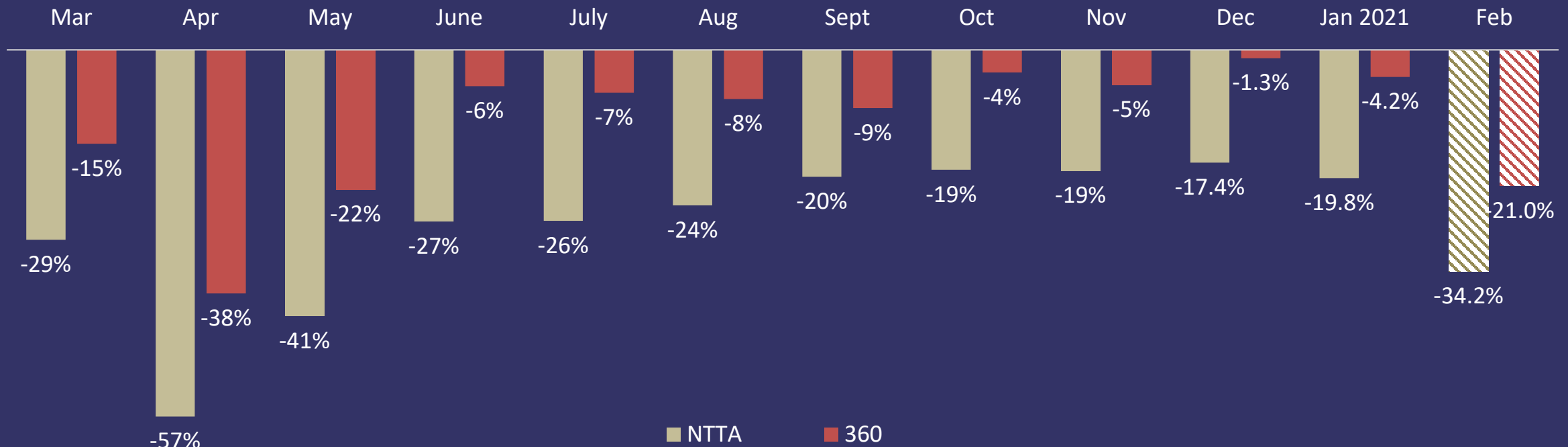
Motor Vehicle Sales and Rental Tax (-13.8%, February)



FUNDING IMPACT

NTTA Transactions, Including SH 360

Change in Tollway Transactions vs Baseline



Source: NTTA

Notes: Baseline is March 2019-February 2020. Change for NTTA includes 360 Tollway; Despite decline in transactions, the revenues are sufficient to meet debt service for SH 360.

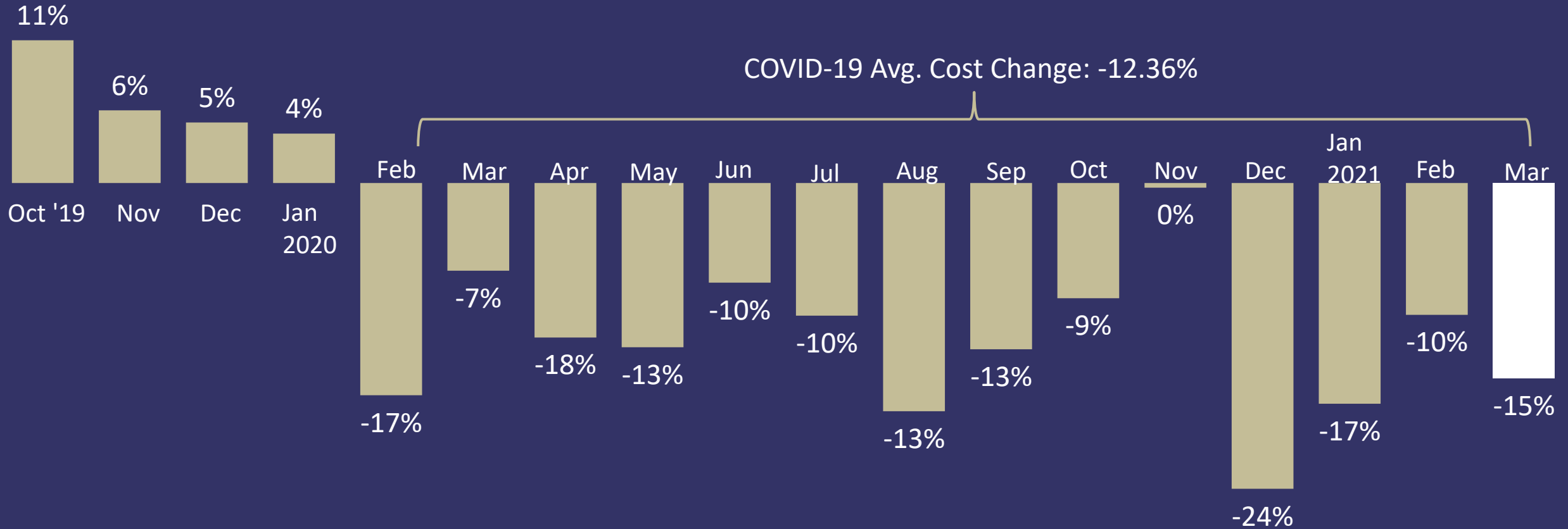
No current impact to RTC backstop expected.

Note: Drop in transactions in Feb 2021 due in large part to week-long winter storm.

Construction Cost Changes

October 2019 to March 2021

Monthly Average Construction Cost Changes
(Letting Low Bid vs. Sealed Engineer's Est.)



Sources: TxDOT Connect and Monthly TxDOT Letting Reports

Notes: Does not include CSJ 2266-02-151; Includes grouped and non-grouped projects; Includes Dallas and Fort Worth District data

DASHBOARD PLATFORM

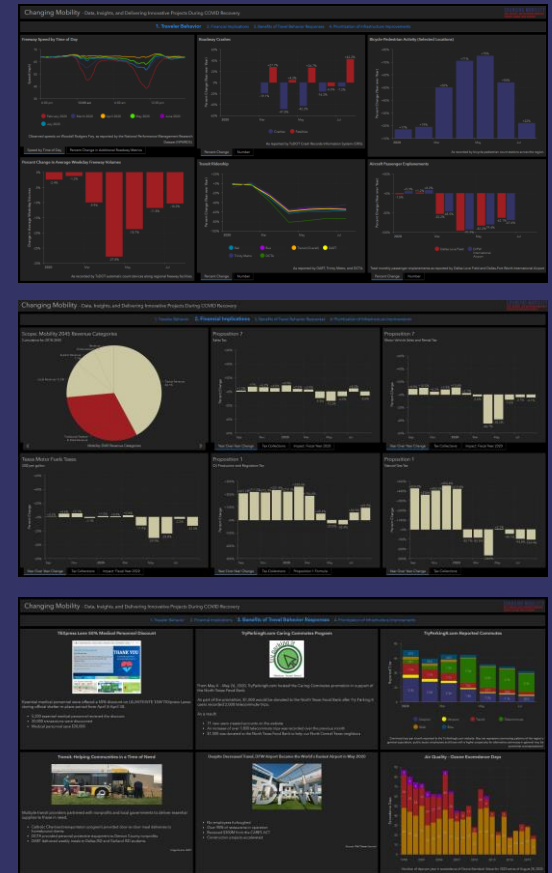
www.nctcog.org/pm/covid-19

Newly launched online dashboard to display Changing Mobility information to the public

Replicates material presented to committees with enhanced interactivity

Separate dashboard for each metric tracked

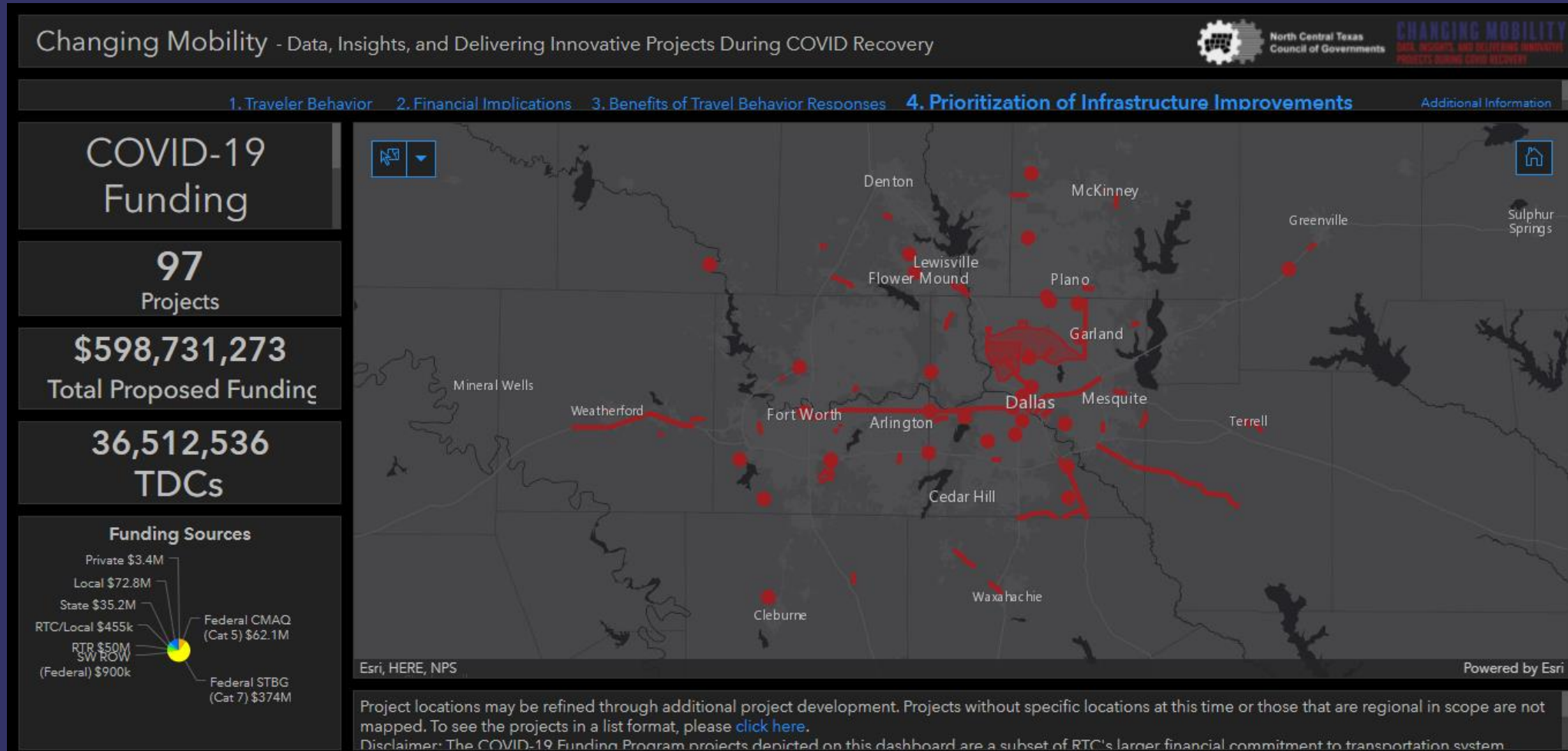
Clean layout to help the public understand the story of the metrics at a glance



DASHBOARD PLATFORM

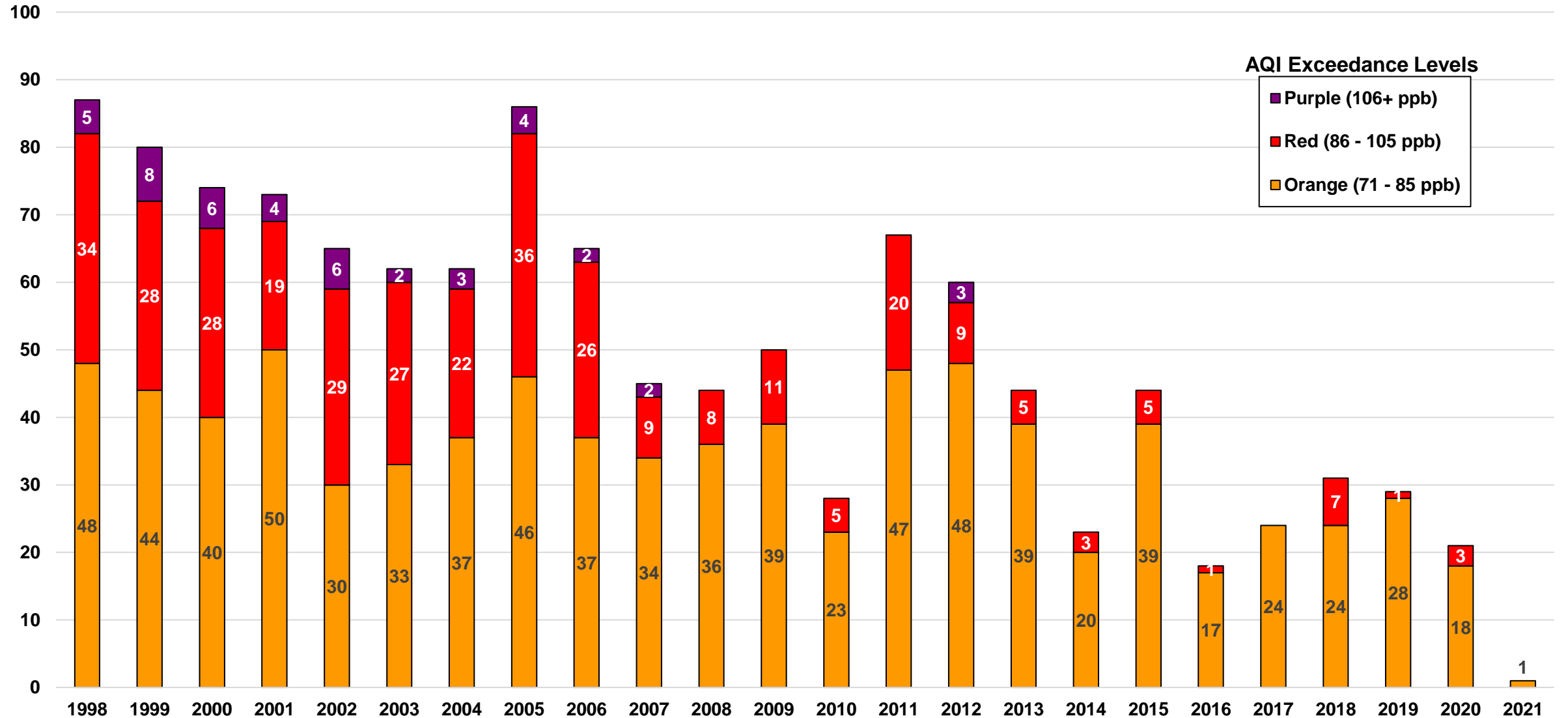
www.nctcog.org/pm/covid-19

Map and list of all projects funded through COVID-19 #00X Program



8-HOUR OZONE NAAQS HISTORICAL TRENDS

Based on ≤ 70 ppb (As of May 6, 2021)



Exceedance Level indicates daily maximum eight-hour average ozone concentration.
Exceedance Levels are based on Air Quality Index (AQI) thresholds established by the EPA for the revised ozone standard of 70 ppb.

Source: TCEQ, http://www.tceq.state.tx.us/cgi-bin/compliance/monops/8hr_monthly.pl
ppb = parts per billion