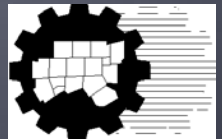


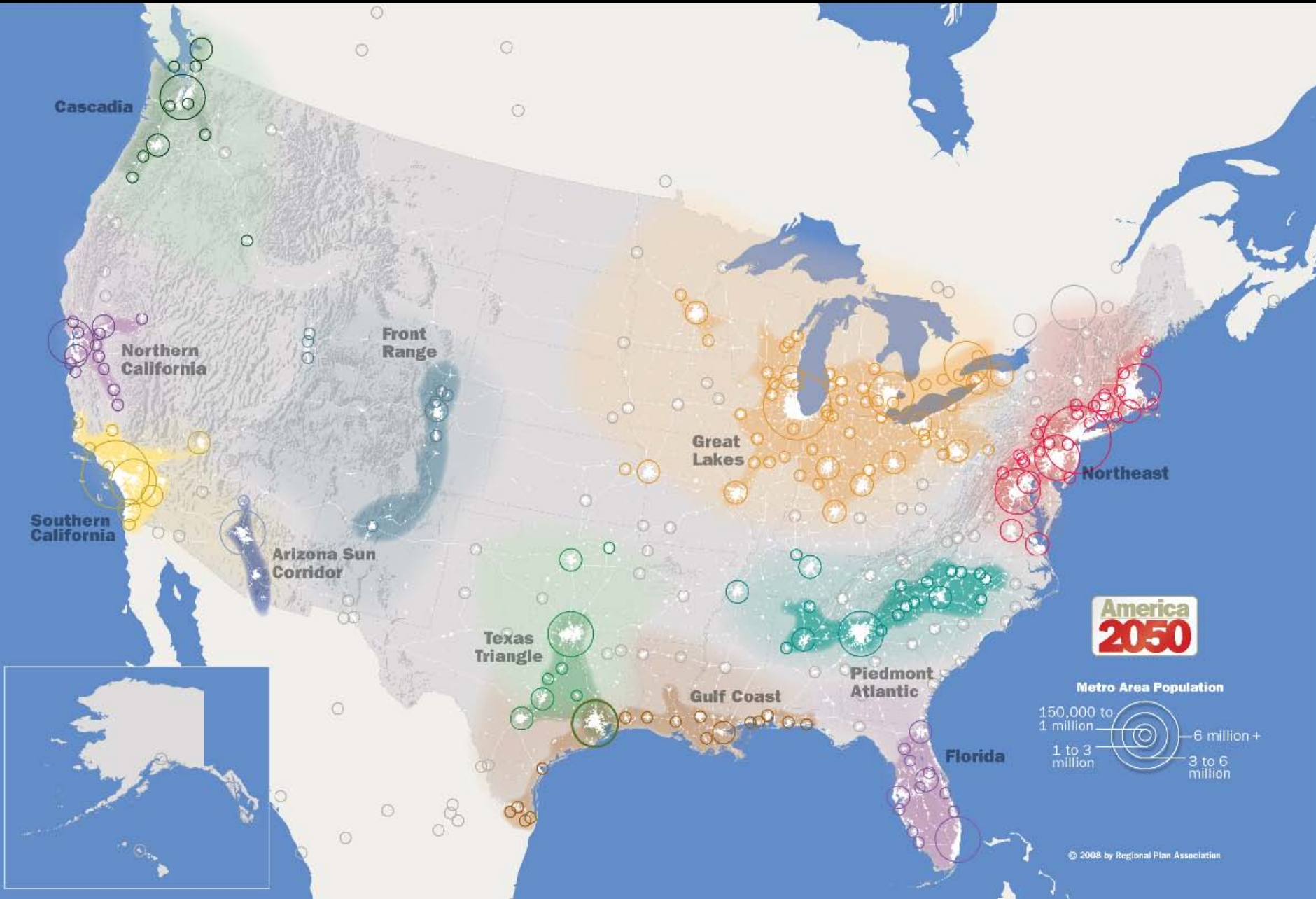
# Metropolitan Planning Organization Mega Region Partnership

Surface Transportation Technical Committee  
January 28, 2011

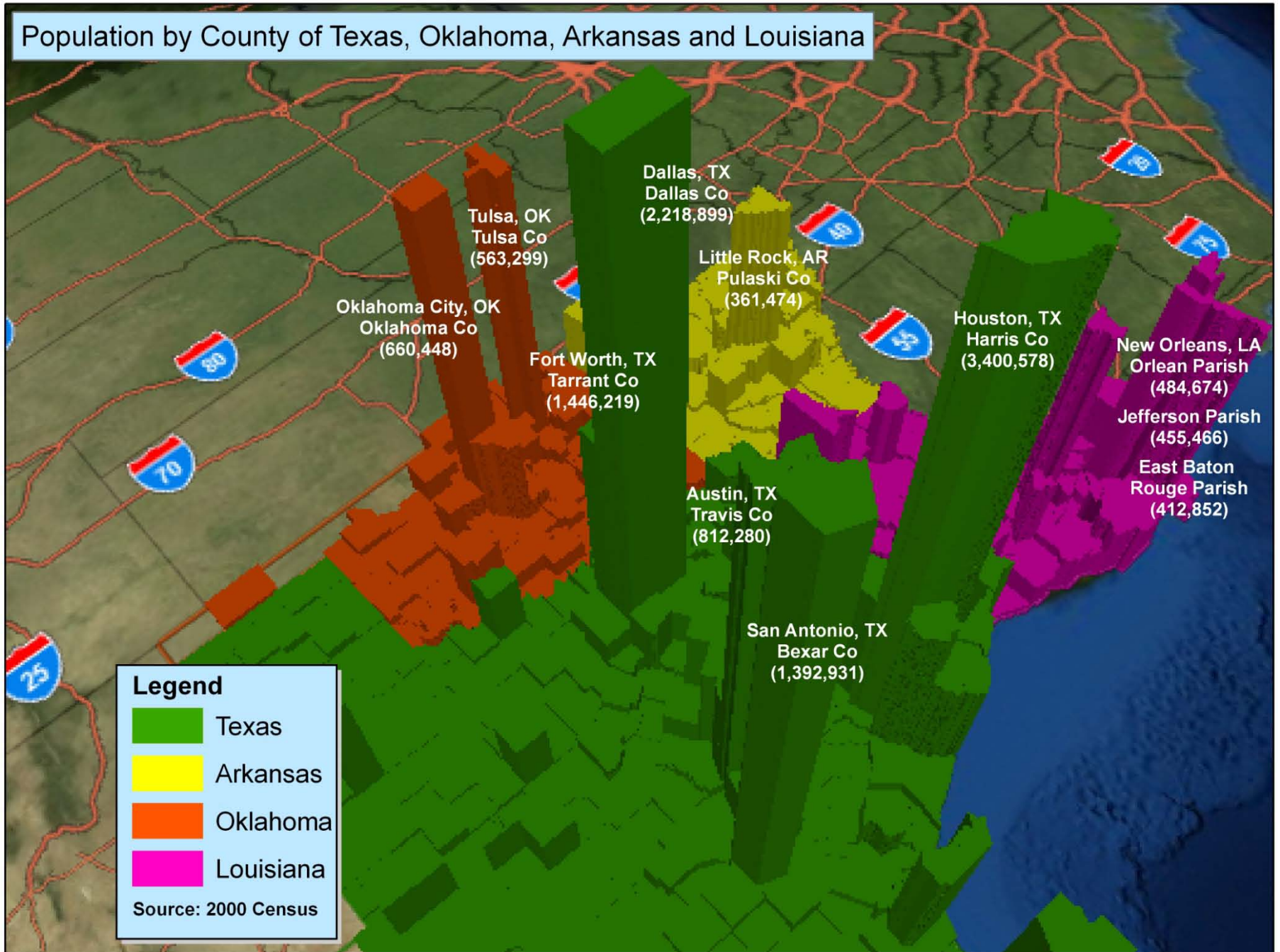
Michael Morris, Director of Transportation  
North Central Texas Council of Governments  
Transportation Department



# Mega Regions



# Population by County of Texas, Oklahoma, Arkansas and Louisiana

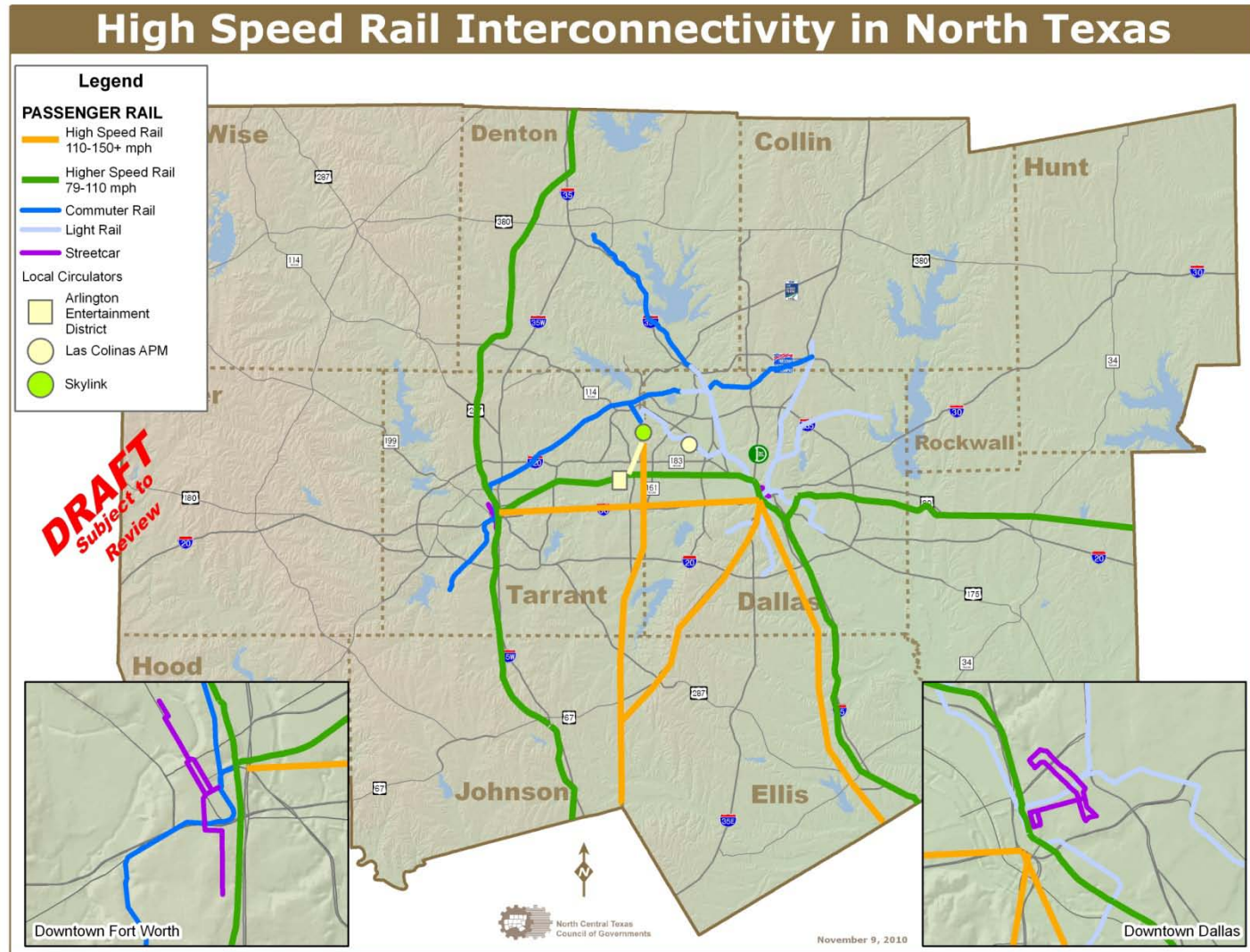


# VISION *for* HIGH-SPEED RAIL *in* AMERICA



Source: Federal Railroad Administration

# Potential Considerations for Mobility 2035



# Mega Region Partnership Agreements

